

Acer DynaVivid Graphics Dock

Service Guide

Service guide files and updates are available on the ACER/CSD web; for more information, please refer to <http://csd.acer.com.tw>

Revision History

Please refer to the table below for the updates made on this service guide.

Date	Chapter	Updates

Copyright

Copyright © 2009 by Acer Incorporated. All rights reserved. No part of this publication may be reproduced, transmitted, transcribed, stored in a retrieval system, or translated into any language or computer language, in any form or by any means, electronic, mechanical, magnetic, optical, chemical, manual or otherwise, without the prior written permission of Acer Incorporated.

Disclaimer

The information in this guide is subject to change without notice.

Acer Incorporated makes no representations or warranties, either expressed or implied, with respect to the contents hereof and specifically disclaims any warranties of merchantability or fitness for any particular purpose. Any Acer Incorporated software described in this manual is sold or licensed "as is". Should the programs prove defective following their purchase, the buyer (and not Acer Incorporated, its distributor, or its dealer) assumes the entire cost of all necessary servicing, repair, and any incidental or consequential damages resulting from any defect in the software.

Acer is a registered trademark of Acer Corporation.

Other brand and product names are trademarks and/or registered trademarks of their respective holders.

Conventions

The following conventions are used in this manual:

SCREEN MESSAGES	Denotes actual messages that appear on screen.
NOTE	Gives bits and pieces of additional information related to the current topic.
WARNING	Alerts you to any damage that might result from doing or not doing specific actions.
CAUTION	Gives precautionary measures to avoid possible hardware or software problems.
IMPORTANT	Reminds you to do specific actions relevant to the accomplishment of procedures.

Preface

Before using this information and the product it supports, please read the following general information.

1. This Service Guide provides you with all technical information relating to the BASIC CONFIGURATION decided for Acer's "global" product offering. To better fit local market requirements and enhance product competitiveness, your regional office MAY have decided to extend the functionality of a machine (e.g. add-on card, modem, or extra memory capability). These LOCALIZED FEATURES will NOT be covered in this generic service guide. In such cases, please contact your regional offices or the responsible personnel/channel to provide you with further technical details.
2. Please note WHEN ORDERING FRU PARTS, that you should check the most up-to-date information available on your regional web or channel. If, for whatever reason, a part number change is made, it will not be noted in the printed Service Guide. For ACER-AUTHORIZED SERVICE PROVIDERS, your Acer office may have a DIFFERENT part number code to those given in the FRU list of this printed Service Guide. You MUST use the list provided by your regional Acer office to order FRU parts for repair and service of customer machines.

System Specifications	1
Features	1
System Block Diagram	2
Your Graphics Dock Tour	3
Side Views	3
Base View	4
Hardware Specifications and Configurations	5
Machine Disassembly and Replacement	7
Disassembly Requirements	7
Related Information	7
General Information	7
Pre-disassembly Instructions	7
Disassembly Process	8
Main Unit Disassembly Process	8
Main Unit Disassembly Flowchart	8
Removing the Stand	10
Removing the Monitor Mount	11
Removing the Upper Cover	13
Removing the I/O Board	15
Removing the Mainboard	17
Removing the Thermal Module	18
Main Unit Reassembly Process	19
Replacing the Thermal Module	19
Replacing the Mainboard	20
Replacing the I/O Board	21
Replacing the Upper Cover	22
Replacing the Monitor Mount	24
Replacing the Stand	25
Troubleshooting	27
Power On Issue	28
USB Failure	29
CRT Failure	30
HDMI Failure	31
Other Function Fail	32
Connector Locations	33
Mainboard Top View	33
Mainboard Bottom View	34
FRU (Field Replaceable Unit) List	35
Acer DynaVivid Graphics Dock Exploded Diagrams	36
Main Assembly	36
FRU List	37
Test Compatible Components	39
Notebook vs. LCD Monitor Cross Test List	39
Notebook vs. Project Crosscheck List	40
Online Support Information	43
Index	45

System Specifications

Features

Below is a brief summary of the graphics dock many features:

Video Controller

- ATI Mobility Radeon HD 4670

Dimensions and Weight)

- Weight: 0.65 kg
- Dimensions: 193.5 (W) x 193.5 (D) x 32.8 (H) mm

Power supply

- 3-pin 65 W AC adapter

SI/O interface

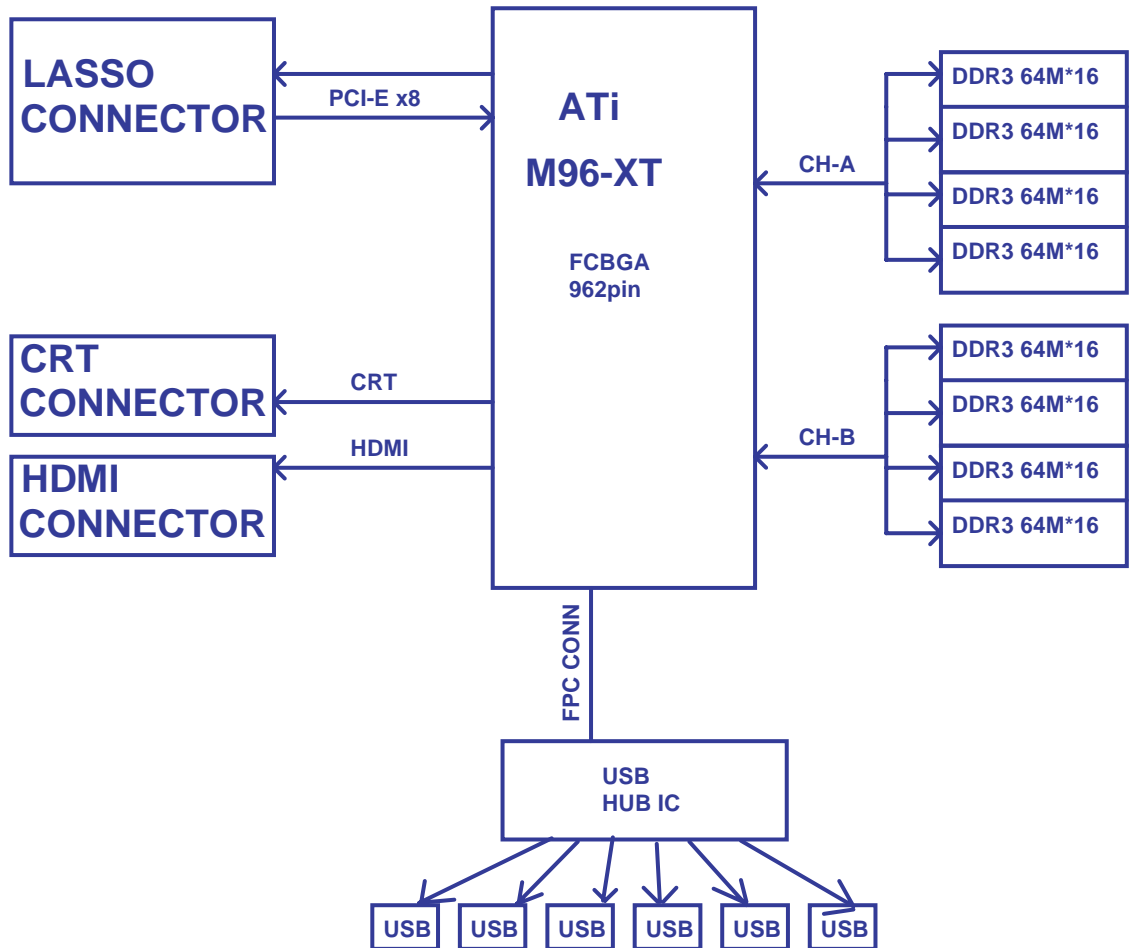
- Six USB ports
- HDMI port
- HDCP supported external display (VGA) port
- DC-in jack for AC adapter
- Acer DynaVivid Graphics Dock connector

Environment

- Temperature:
 - Operating: 5 °C to 35 °C
 - Non-operating: -20 °C to 65 °C
- Humidity (non-condensing):
 - Operating: 20% to 80%
 - Non-operating: 20% to 80%

NOTE: The specifications listed above are for reference only. The exact configuration of the graphics dock depends on the model purchased.

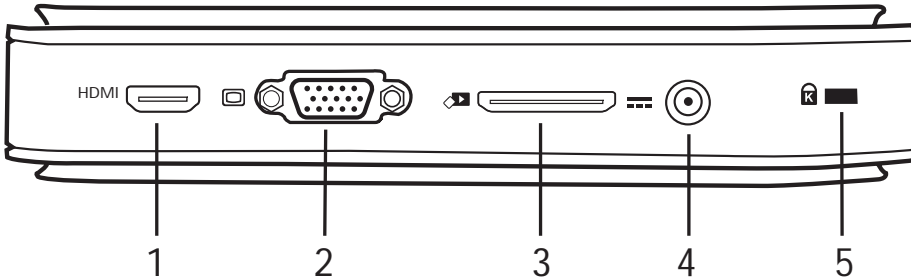
System Block Diagram



Your Graphics Dock Tour

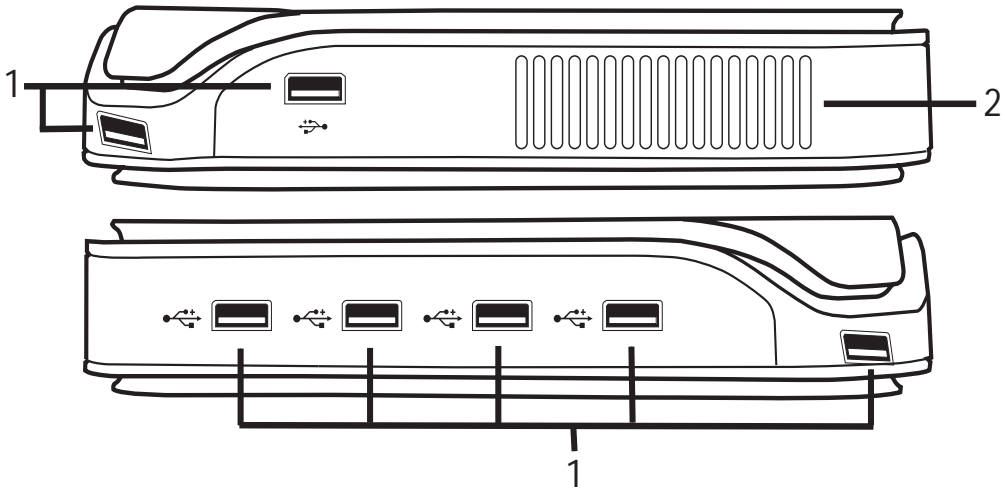
This section provides an overview of the features and functions of the graphics dock.

Side Views



No.	Icon	Item	Description
1		HDMI port	Supports high-definition digital video connections.
2		External display (VGA) port	Connects to a display device (e.g., external monitor, LCD projector).
3		Acer DynaVivid Graphics Dock connector	Connects to Acer DynaVivid Graphics Dock.
4		DC-in jack	Connects to an AC adapter.
5		Kensington lock slot	Connects to a Kensington-compatible computer security lock.

USB Connector Sides View

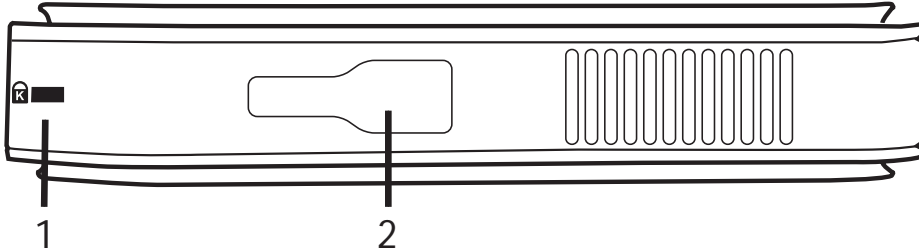



No.	Icon	Item	Description
1		USB 2.0 ports	Connects to USB 2.0 devices.

No.	Icon	Item	Description
2		Ventilation Slots	Air flow grill.

CAUTION: Always ensure that the ventilation slots are uncovered and air can freely flow through the grill.

Base View



No.	Icon	Item	Description
1		Kensington lock slot	Connects to a Kensington-compatible computer security lock.
2		Lock hole	Secures the device to the stand.

Hardware Specifications and Configurations

Video Chip

Item	Specification
Video Chip	M96 XT
Package	962 FCBGA
Features	<ul style="list-style-type: none"> • IPCI Express Revision 2.0 • DirectX 10.1 with Shader Model 4.1 • VESA DisplayPort technologies • Integrated HDMI and HDCP keys • Unified Video Decoder 2.0 (UVD2) • HD-DVD • Blu-Ray decoder

CPU Fan True Value Table

CPU Temperature (Celsius)	Fan Speed (RPM)	SPL Spec (dBA)
46	3200	31
56	3700	35
65	4200	38
72	4800	46
85	95%Duty	90%

Throttling 50%: On= 81°C; OFF=90°C

OS shut down at 100°C; H/W shut down at 92°C

USB Hub

Item	Specification
USB Hub	GL852
Features	<ul style="list-style-type: none"> • Compliant to USB specification Revision 2.0 • On-chip 8-bit micro-processor • Multiple Transaction translator (MTT) • Each downstream port supports two-color status indicator • Supports both individual and gang modes • Supports gang mode of power management and over-current detection for downstream ports • Conforms to bus power requirements • Automatic switching between self-powered and bus-powered modes • Integrated USB 2.0 transceiver

System Memory

Item	Specification
Supports memory size per socket	DDR III 800MHz
Supports maximum memory size	Total Maximum memory up to 128MBX8

Machine Disassembly and Replacement

This chapter contains step-by-step procedures on how to disassemble the graphics dock for maintenance and troubleshooting.

Disassembly Requirements

To disassemble the graphics dock, you need the following tools:

- Wrist grounding strap and conductive mat for preventing electrostatic discharge
- Philips screwdriver
- Plastic flat screwdriver
- Plastic tweezers

NOTE: The screws for the different components vary in size. During the disassembly process, group the screws with the corresponding components to avoid mismatch when putting back the components.

Related Information

The product previews seen in the disassembly procedures may not represent the final product color or configuration.

IMPORTANT: Cable paths and positioning may not represent the actual model. During the removal and replacement of components, ensure all available cable channels and clips are used and that the cables are replaced in the same position.

General Information

Pre-disassembly Instructions

Before proceeding with the disassembly procedure, make sure that you do the following:

1. Turn off the power to the system and remove all peripherals.
2. Unplug the AC adapter and all power and signal cables from the system.



3. Place the system on a flat, stable surface.

Disassembly Process

The disassembly process is divided into the following sections:

- Main unit disassembly

The flowcharts provided in the succeeding disassembly sections illustrate the entire disassembly sequence. Observe the order of the sequence to avoid damage to any of the hardware components. For example, if you want to remove the Mainboard, you must first remove the Keyboard, and LCD Module then disassemble the inside assembly frame in that order.

Main Screw List

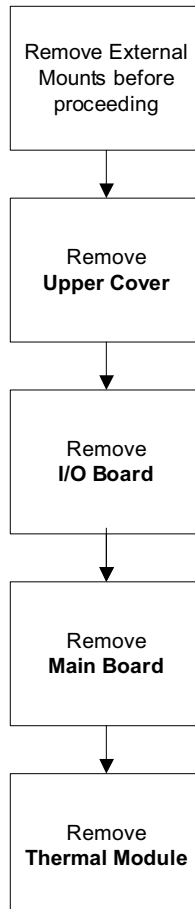
Screw	Quantity	Part Number
M2*6	15	

Main Unit Disassembly Process

IMPORTANT: Cable paths and positioning may not represent the actual model. During the removal and replacement of components, ensure all available cable channels and clips are used and that the cables are replaced in the same position.

NOTE: The product previews seen in the disassembly procedures may not represent the final product color or configuration.

Main Unit Disassembly Flowchart



Screw List

Step	Screw	Quantity	Part No.
Main Unit Disassembly	2*6	15	

Removing the Stand

- 1. Slide the stand off the base of the graphics dock.

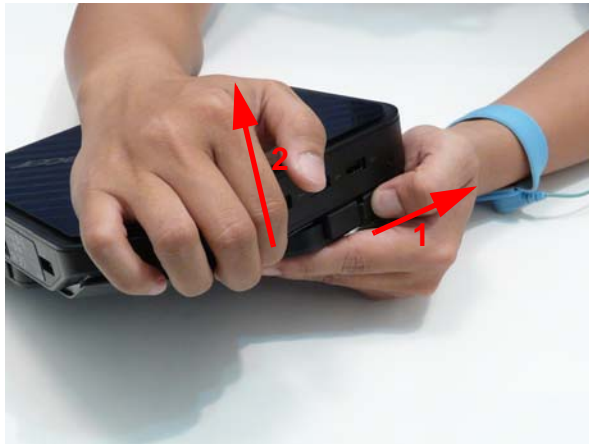


Removing the Monitor Mount

1. Lay the graphics dock with monitor mount down with the monitor mount underneath.



2. Slide back the monitor mount lock to the open position (1) and firmly lift up the graphics dock (2).



3. Repeat step 2. on the other side.



-
4. Lift the graphics dock away from the monitor mount.




Removing the Upper Cover

If necessary first remove any mounts that may be attached to the unit. See "Removing the Stand" on page 10. See "Removing the Monitor Mount" on page 11.

1. Remove the one (1) screw.



Step	Size	Quantity	Screw Type
Removing the Upper Cover	M2*6	1	

2. Insert a plastic tweezer end or other soft tool to lever open the upper cover from the lower cover in the side location shown.



NOTE: Ensure to open in the middle of the side as there are latches to either side of the location.

3. Pry up both corners of the side opened.



4. Proceed to pry open the upper cover around the edges of the graphic dock.

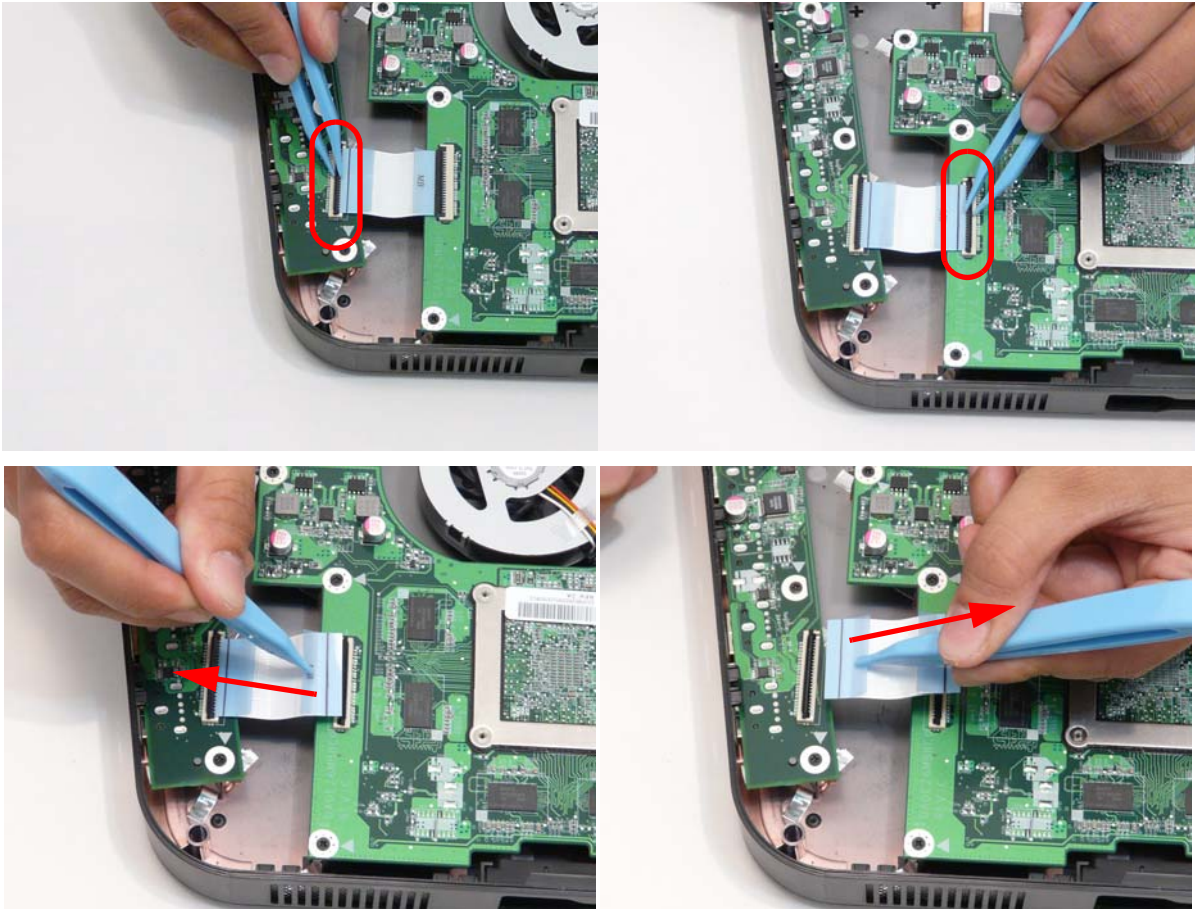


5. Lift the upper cover off.




Removing the I/O Board

1. See "Removing the Upper Cover" on page 13.
2. Remove the I/O cable.



3. Remove the four (4) screws.



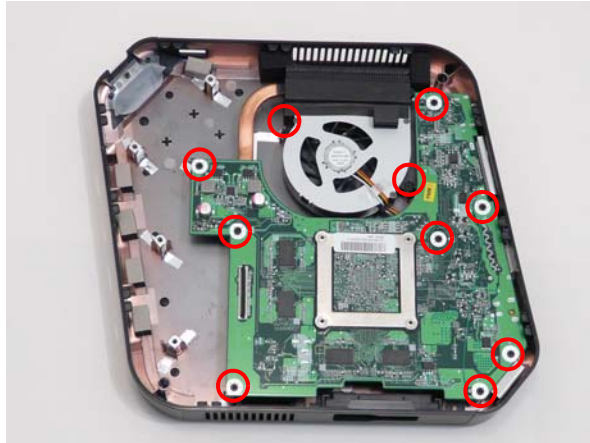
Step	Size	Quantity	Screw Type
Removing the IO board.	M2*6	4	


-
4. Lift the I/O board out.



Removing the Mainboard

1. See "Removing the Upper Cover" on page 13.
2. See "Removing the I/O Board" on page 15.
3. Remove the ten screws (10) from the mainboard.



Step	Size	Quantity	Screw Type
Removing the Mainboard	M2*6	10	

4. Lift the mainboard out.



Removing the Thermal Module

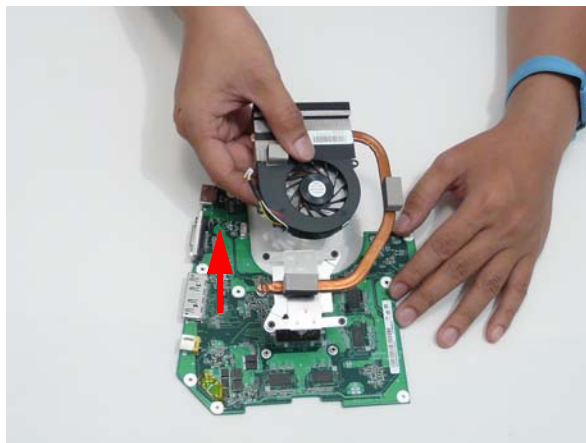
1. See "Removing the Mainboard" on page 17.
2. Remove the thermal module cable.



3. Loosen the four captive screws in order: first 4, then 3 > 2 > 1.



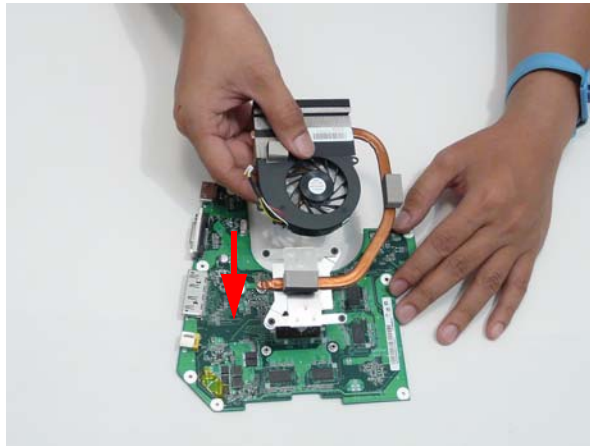
4. Lift the thermal module out.



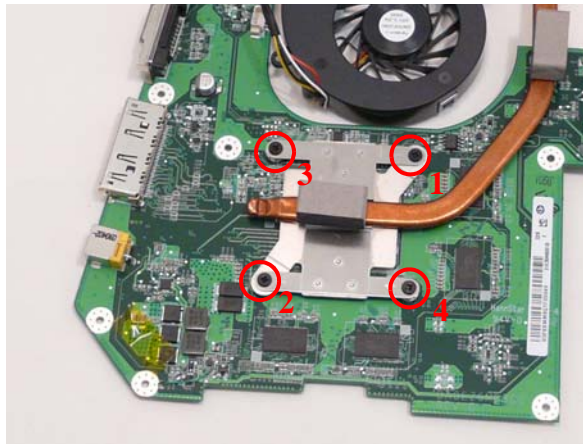
Main Unit Reassembly Process

Replacing the Thermal Module

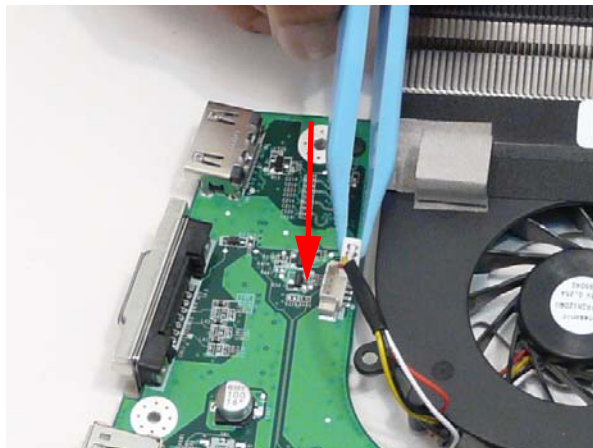
1. Place the thermal module on the mainboard.



2. Tighten the four captive screws in order: first 1 then 2 > 3 > 4.



3. Connect the thermal module connector to the mainboard.

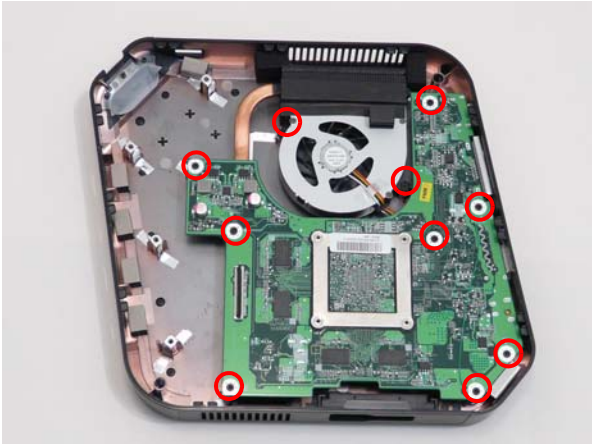



Replacing the Mainboard

- 1. Place the mainboard into the lower cover.



- 2. Replace the ten (10) screws.



Step	Size	Quantity	Screw Type
Replacing the Mainboard	M2*6	10	


Replacing the I/O Board

- 1. Place the IO board into the lower cover.

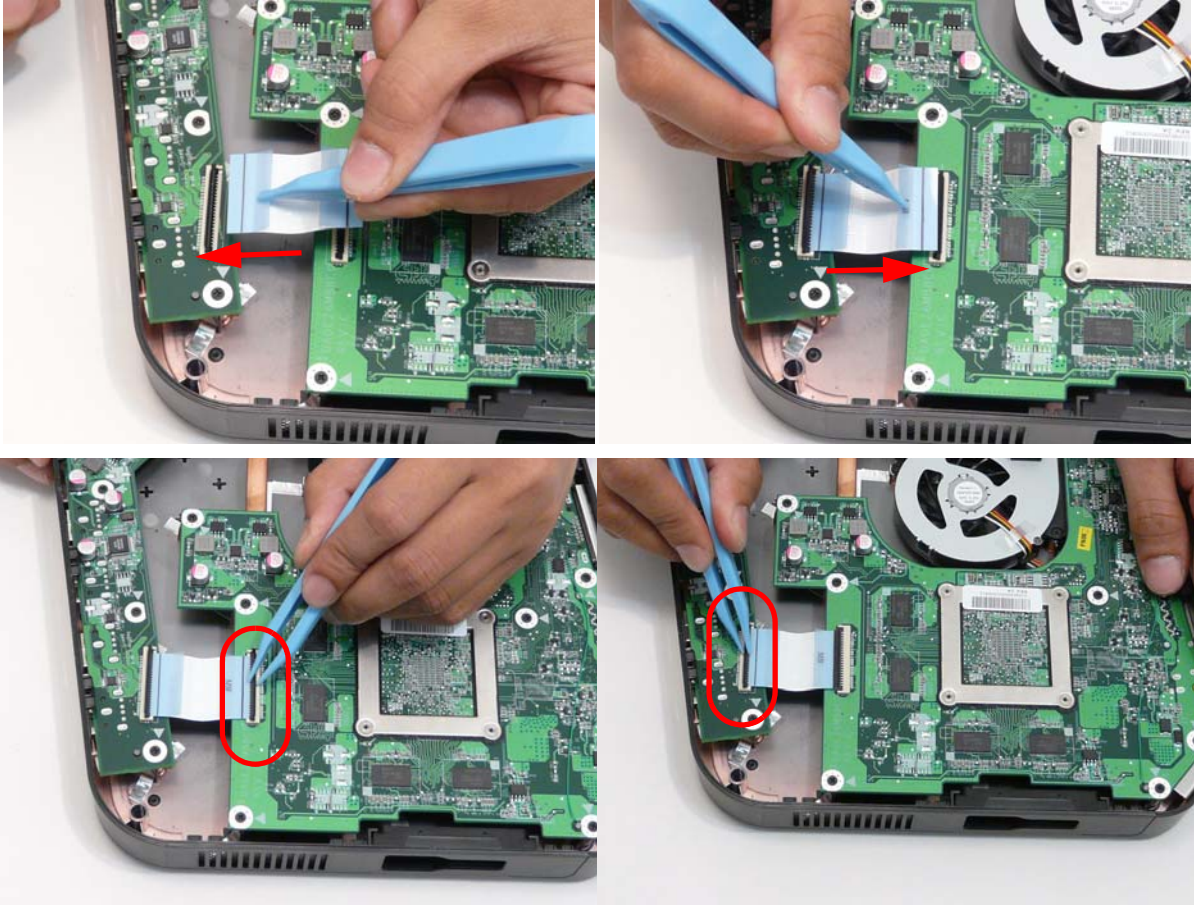


- 2. Replace the four (4) screws.



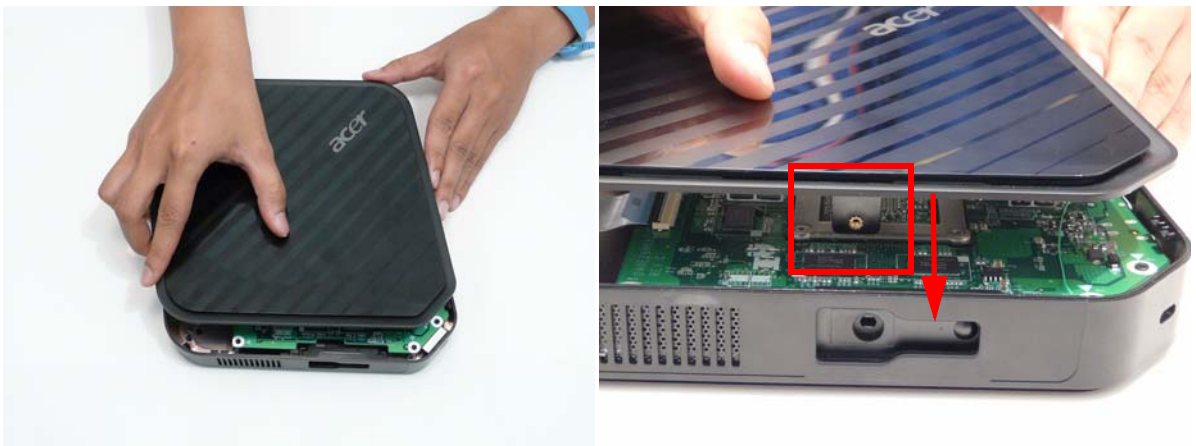
Step	Size	Quantity	Screw Type
Replacing the IO board.	M2*6	4	

3. Replace the IO cable.



Replacing the Upper Cover

1. Place the upper cover on the lower cover being careful to align the latch correctly.




2. Press down around the edges of the upper cover firmly.



3. Replace the one (1) screw.



Step	Size	Quantity	Screw Type
Replacing the Upper Cover	M2*6	1	

Replacing the Monitor Mount

1. Place the graphics dock onto the monitor mount.



2. Slide the monitor mount latch switch open (1) and press the graphics dock down (2) until it latches in place.

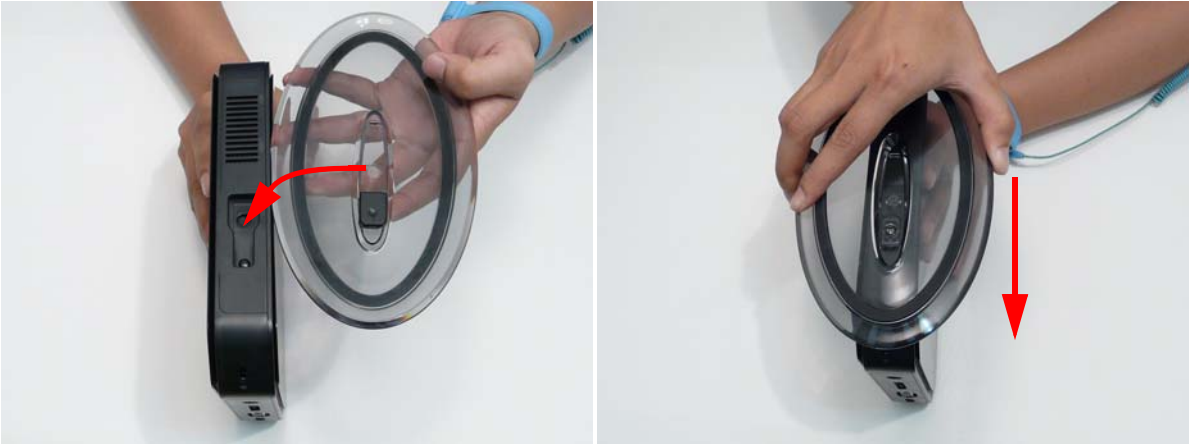


3. Repeat Step 2 on the other side.



Replacing the Stand

1. Slide the stand onto the graphics dock mounting bracket.



Troubleshooting

Use the following procedure as a guide for system problems.

NOTE: The diagnostic tests are intended to test only Acer products. Non-Acer products, prototype cards, or modified options can give false errors and invalid system responses.

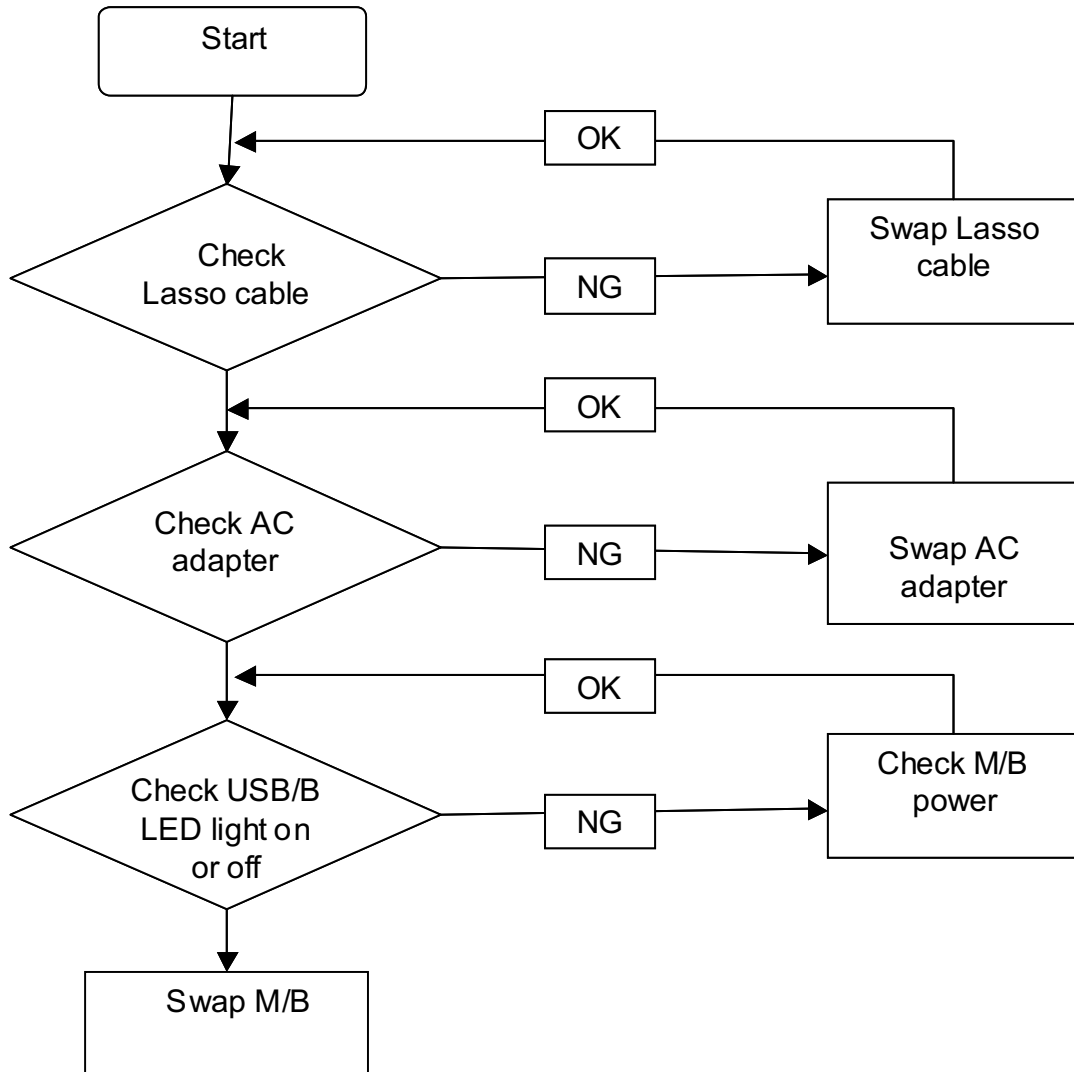
1. Obtain the failing symptoms in as much detail as possible.
2. Verify the symptoms by attempting to re-create the failure by running the diagnostic test or by repeating the same operation.
3. Use the following table with the verified symptom to determine which page to go to.

Symptoms (Verified)	Go To
Power On Issue	Page 28
USB Failure	Page 29
CRT Failure	Page 30
HDMI Failure	Page 31
Other Functions Failure	Page 32

4. If the issue is still not resolved, see "Online Support Information" on page 43.

Power On Issue

If the system doesn't power on, perform the following actions one at a time to correct the problem. Do not replace non-defective FRUs:



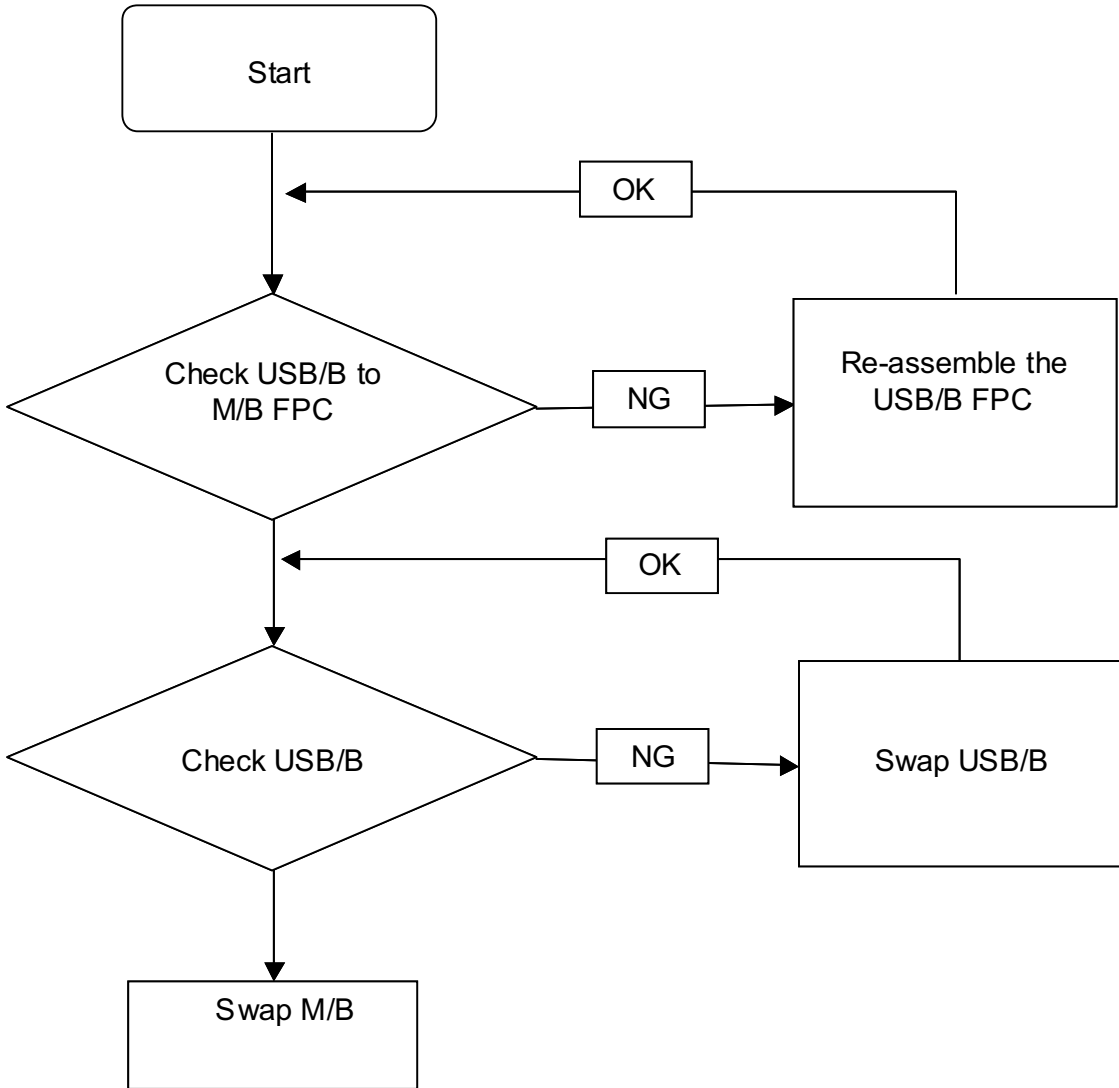
The Graphics Dock Shuts Down Intermittently

If the system powers off at intervals, perform the following actions one at a time to correct the problem.

1. Check the power cable is properly connected to the graphics dock and the electrical outlet.
2. Remove any extension cables between the graphics dock and the outlet.
3. Remove any surge protectors between the graphics dock and the electrical outlet. Plug the graphics dock directly into a known good electrical outlet.
4. Remove all external and non-essential hardware connected to the graphics dock that are not necessary to the graphics dock.
5. If the Issue is still not resolved, see see "Online Support Information" on page 43.

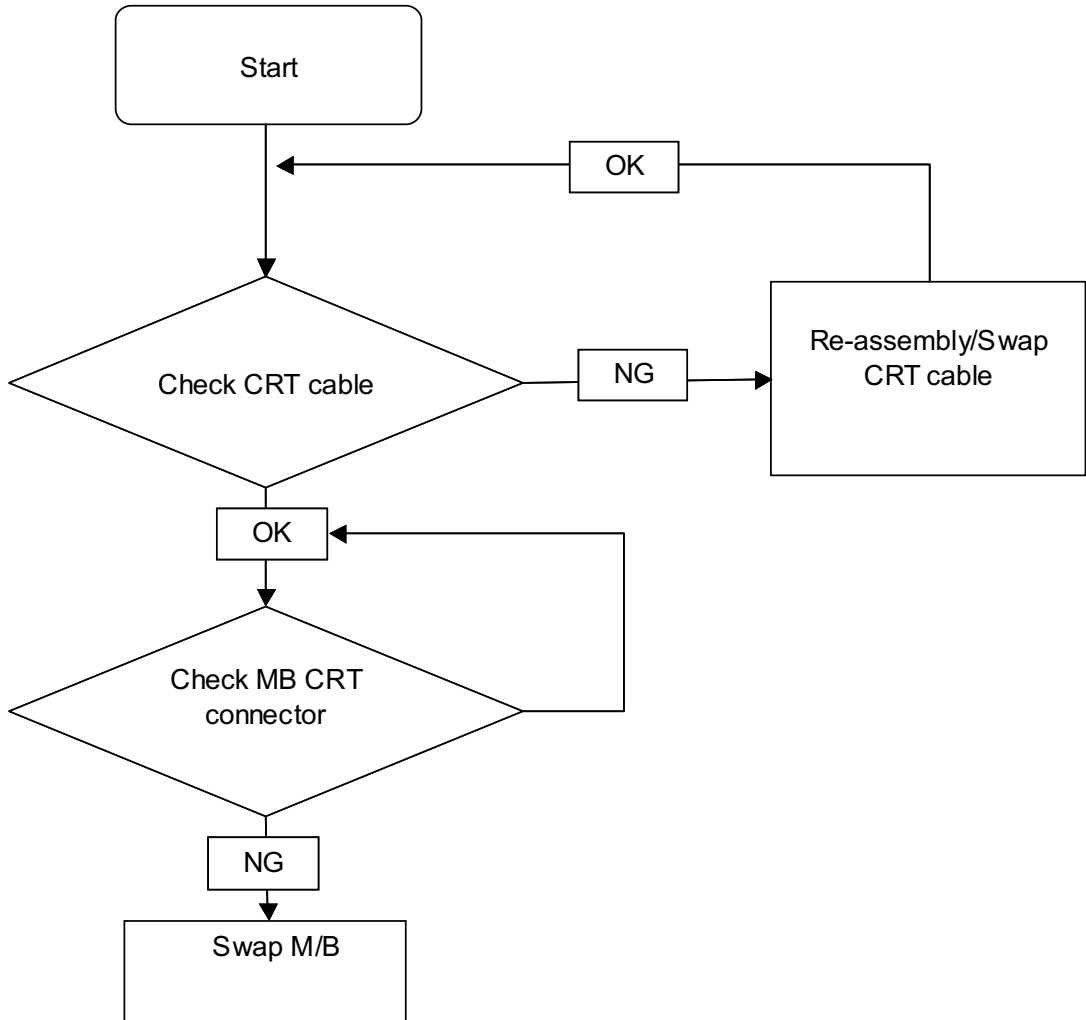
USB Failure

If there is an issue with the USB port(s), perform the following actions one at a time to correct the problem. Do not replace non-defective FRUs:



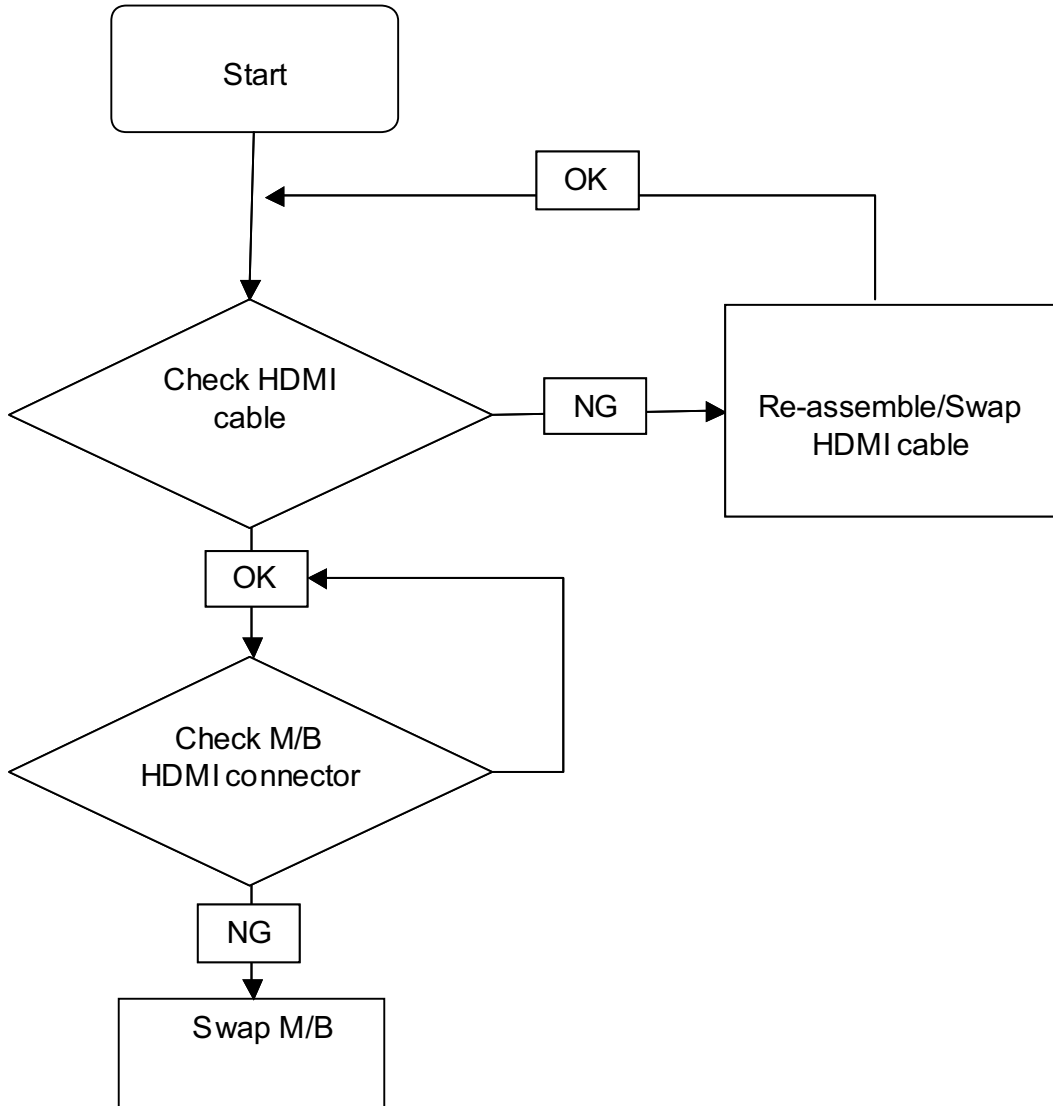
CRT Failure

If the system doesn't power on, perform the following actions one at a time to correct the problem. Do not replace non-defective FRUs:



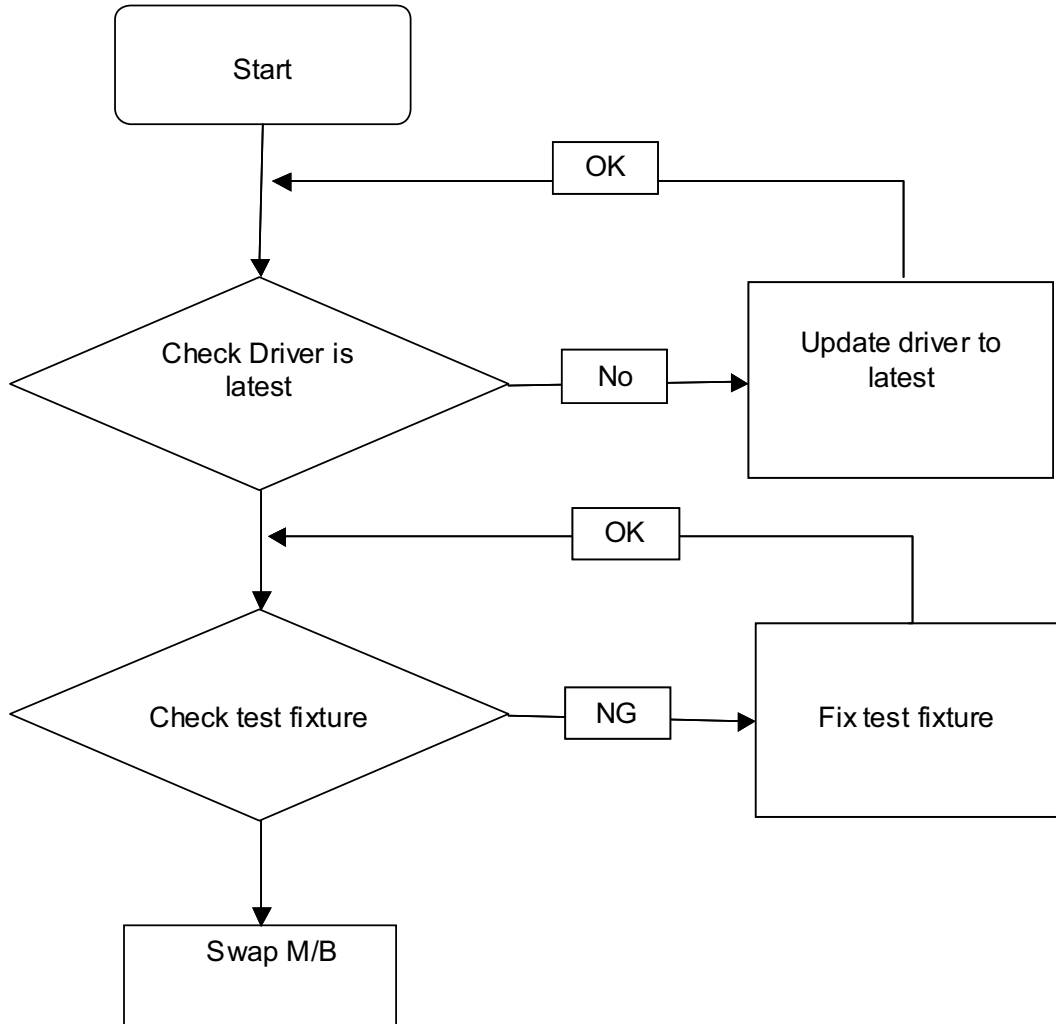
HDMI Failure

If there is a failure with the HDMI, perform the following actions one at a time to correct the problem. Do not replace non-defective FRUs:



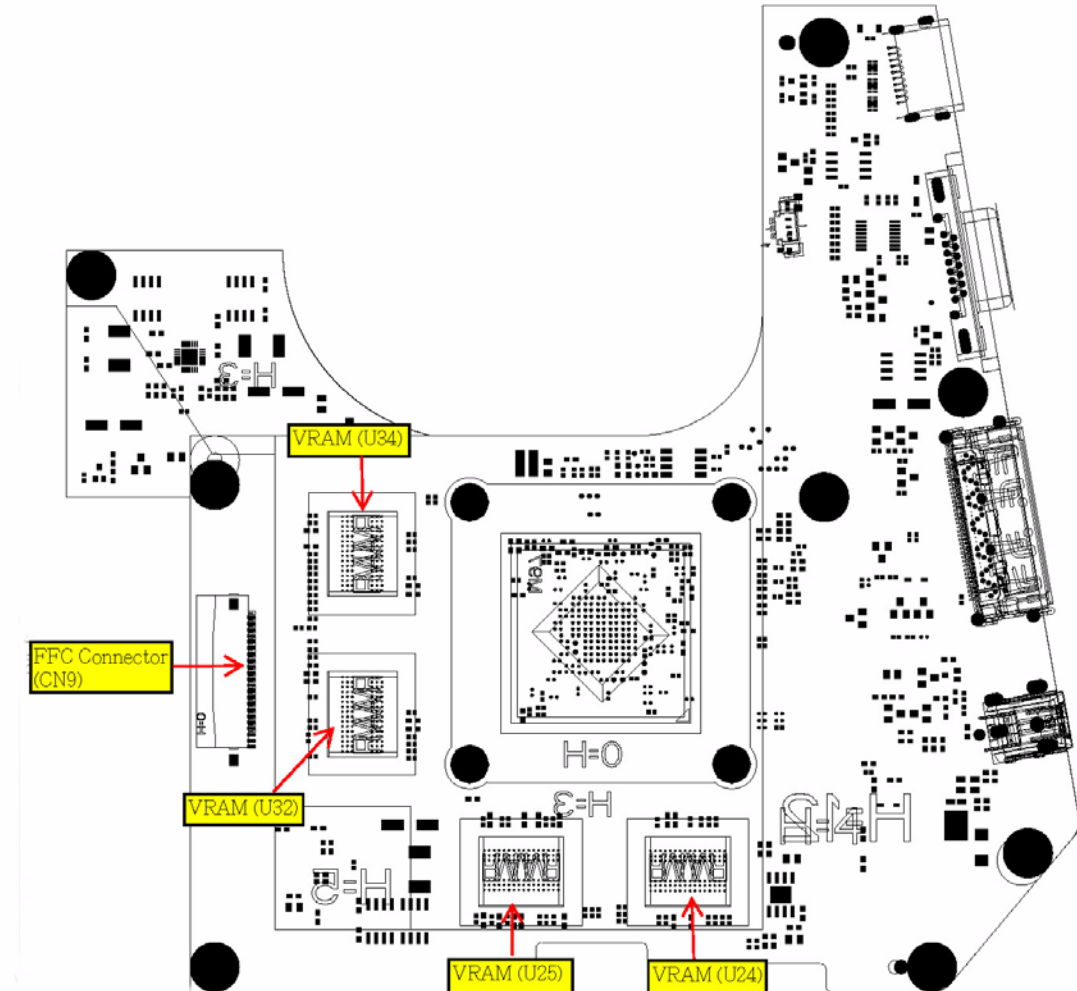
Other Function Fail

If there is a failure not previously noted, perform the following actions one at a time to correct the problem. Do not replace non-defective FRUs:



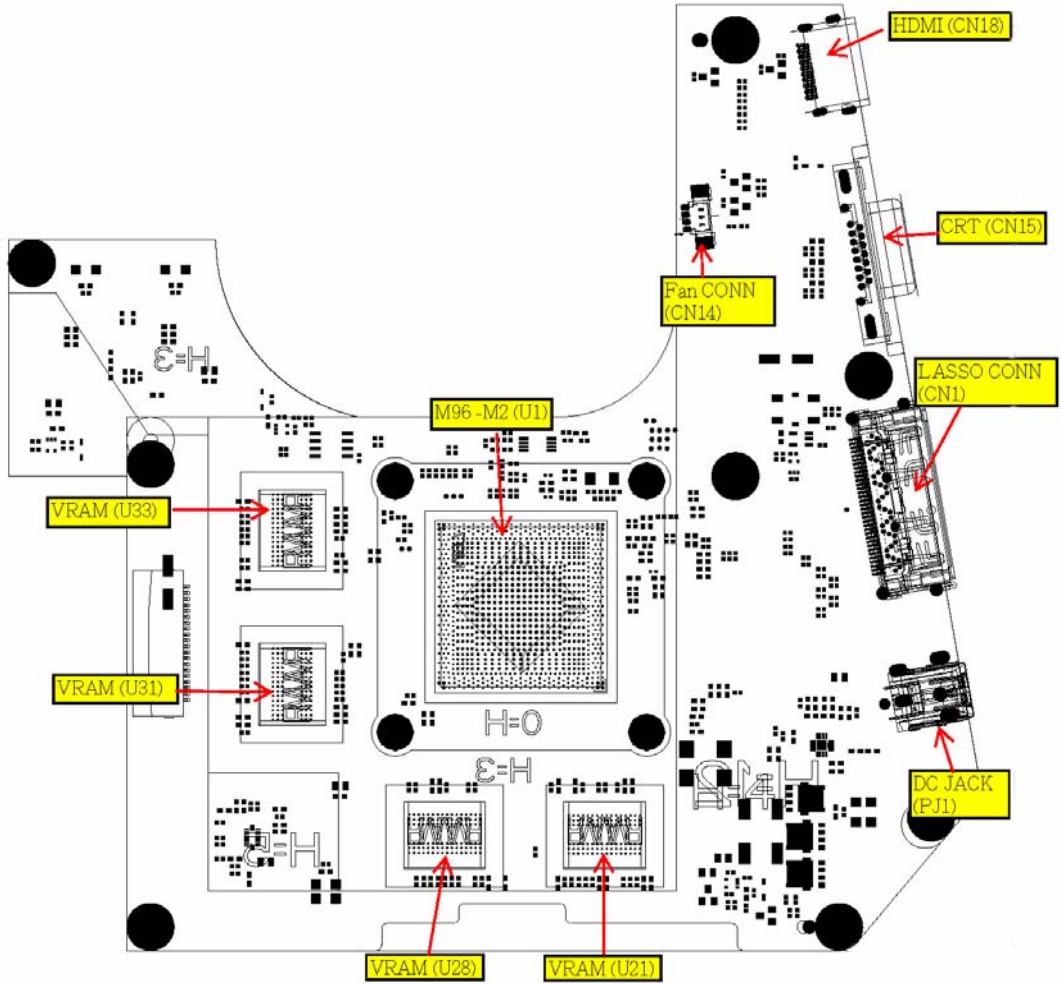
Connector Locations

Mainboard Top View



Connector	Description	Connector	Description
U34	VRAM	U32	VRAM
U24	VRAM	CN9	FCC Connector
U25	VRAM		

Mainboard Bottom View



Connector	Description	Connector	Description
U1	M96-M2	U21	VRAM
CN14	Fan Connector	U28	VRAM
CN15	CRT	U31	VRAM
CN1	Lasso Connector	U33	VRAM
PJ1	DC Jack		

FRU (Field Replaceable Unit) List

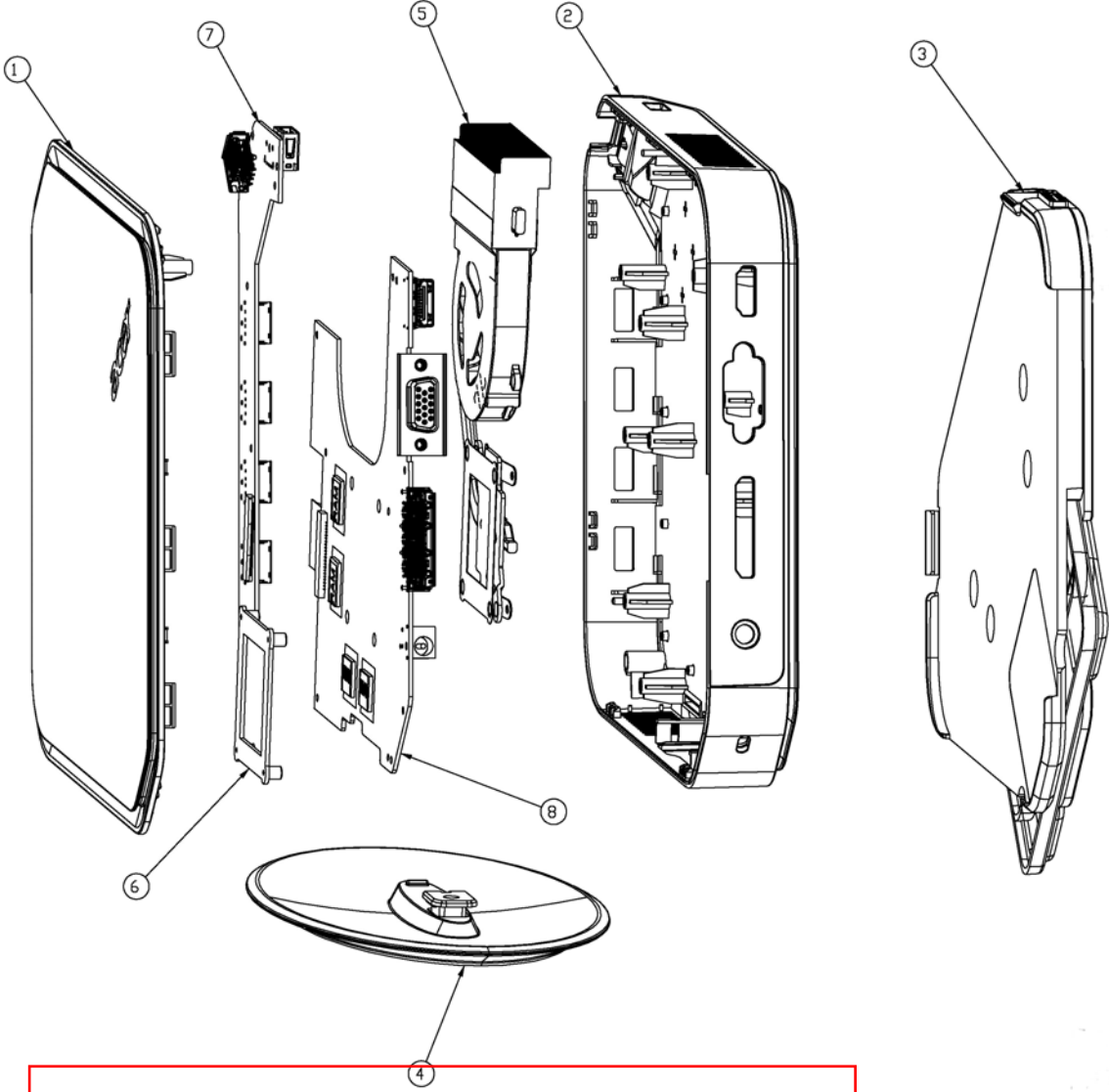
This chapter gives you the FRU (Field Replaceable Unit) listing in global configurations of the Graphics Dock to this chapter whenever ordering for parts to repair or for RMA (Return Merchandise Authorization).

Please note that WHEN ORDERING FRU PARTS, you should check the most up-to-date information available on your regional web or channel. For whatever reasons a part number change is made, it will not be noted on the printed Service Guide. For ACER AUTHORIZED SERVICE PROVIDERS, your Acer office may have a DIFFERENT part number code from those given in the FRU list of this printed Service Guide. You MUST use the local FRU list provided by your regional Acer office to order FRU parts for repair and service of customer machines.

NOTE: To scrap or to return the defective parts, you should follow the local government ordinance or regulations on how to dispose it properly, or follow the rules set by your regional Acer office on how to return it.


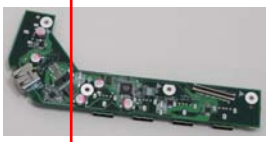



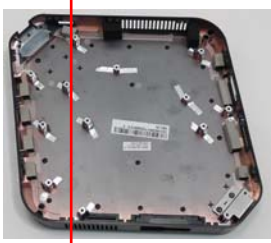

Acer DynaVivid Graphics Dock Exploded Diagrams



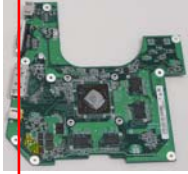


Main Assembly



Item	Description	Part Number
1	Upper Cover	
2	Lower Cover	
3	Monitor Mount	
4	Stand	
5	Thermal Module	
6	Thermal Bracket	
7	IO Board	
8	Mainboard	

FRU List

CATEGORY	PARTNAME	ACERPARTNO.
ADAPTER		
		AP.06501.026
		AP.06503.024
		AP.0650A.012
BOARD		
		
CABLE		
	POWER CORD US 3PIN ROHS	27.TAXV7.001
		
		
CASE/COVER/BRACKET ASSEMBLY		
		
		

CATEGORY	PARTNAME	ACERPARTNO.
		
		
MAINBOARD		
		
HEATSINK		
		
SCREW		
		

Test Compatible Components

This graphics dock compatibility is tested and verified by Acer's internal testing department. All of its system functions are tested under Windows® XP Home, Windows® XP Pro environment.

Refer to the following lists for components, adapter cards, and peripherals which have passed these tests. Regarding configuration, combination and test procedures, please refer to the Test Report released by the Acer Mobile System Testing Department.

Notebook vs. LCD Monitor Cross Test List

Driver vendor/version: 8.631.1RC7
 Sys Bios: VBIOS: LM Ver. 3103 / A10 / 3.0.03
 Dock: Wi(Allow additional XGP)

Acer LCD Monitor vs. NB				External Single mode					Fn+F5 switch test (3 times)					Driver Utility switch test				Issue Description	
Display Size	Model Name	Input	Optimal Resolution	PnP Monitor Check	Test Resolution	Focus (w/ Monitor Test)	Flicker (w/ Monitor Test, gray color)	Power Sequence	NB LCD	Clone	External	800x600	1024x768	Extended	NB LCD	Clone	External		Extended
17"	B173(v)	D-Sub	1280x1024@60Hz	P	P	P	P	P	Na	Na	Na	Na	Na	Na	P	N/A	P	P	
		DVI	1280x1024@61Hz	N/A	N/A	N/A	N/A	N/A	N/A	N/A	N/A	N/A	N/A	N/A	N/A	N/A	N/A	N/A	N/A
19"	X193HQ(x)	D-Sub	1366x768@60Hz	P	N/A	P	P	P	N/A	N/A	N/A	N/A	N/A	N/A	P	N/A	P	P	
		DVI	1366x768@60Hz	N/A	N/A	N/A	N/A	N/A	N/A	N/A	N/A	N/A	N/A	N/A	N/A	N/A	Na	N/A	
	V193(x) Viseo 193Ws(v)	D-Sub	1280x1024@75Hz	P	P	P	P	P	N/A	N/A	N/A	N/A	N/A	N/A	P	N/A	P	P	
		D-Sub	1440x900@60Hz	P	P	P	P	P	N/A	N/A	N/A	N/A	N/A	N/A	N/A	P	N/A	P	P
20"	V203H(v)	D-Sub	1600x900@60Hz	P	P	P	P	P	N/A	N/A	N/A	N/A	N/A	N/A	P	N/A	P	P	
		DVI	1600x900@60Hz	N/A	N/A	N/A	N/A	N/A	N/A	N/A	N/A	N/A	N/A	N/A	N/A	N/A	N/A	N/A	
21"	H223HQ(v)	D-Sub	1920x1080@60Hz	P	P	P	P	P	N/A	N/A	N/A	N/A	N/A	N/A	P	N/A	P	P	
		DVI	1920x1080@60Hz	N/A	N/A	N/A	N/A	N/A	N/A	N/A	N/A	N/A	N/A	N/A	N/A	N/A	N/A	N/A	
		HDMI	1920x1080@60Hz	P	P	P	P	P	N/A	N/A	N/A	N/A	N/A	N/A	P	N/A	P	P	0931-0033 :Limitation
23"	Viseo 223Ws(v)	D-Sub	1680x1050@60Hz	P	P	P	P	P	N/A	N/A	N/A	N/A	N/A	N/A	P	N/A	P	P	
		DVI	1680x1050@60Hz	N/A	N/A	N/A	N/A	N/A	N/A	N/A	N/A	N/A	N/A	N/A	N/A	N/A	N/A	N/A	
	X233H(x)	D-Sub	1920x1080@60Hz	P	P	P	P	P	N/A	N/A	N/A	N/A	N/A	N/A	P	N/A	P	P	
		DVI	1920x1080@60Hz	N/A	N/A	N/A	N/A	N/A	N/A	N/A	N/A	N/A	N/A	N/A	N/A	N/A	N/A	N/A	
		HDMI	1920x1080@60Hz	P	P	P	P	P	N/A	N/A	N/A	N/A	N/A	N/A	P	N/A	P	P	0931-0033 :Limitation
		USB	1920x1080@60Hz	N/A	N/A	N/A	N/A	N/A	N/A	N/A	N/A	N/A	N/A	N/A	N/A	N/A	N/A	N/A	
	B233HU(t)	D-Sub	2048x1152@60Hz	P	P	P	P	P	N/A	N/A	N/A	N/A	N/A	N/A	P	Na	P	P	
		DVI	2048x1152@60Hz	N/A	N/A	N/A	N/A	N/A	N/A	N/A	N/A	N/A	N/A	N/A	N/A	N/A	N/A	N/A	
	V243HQ(t)	D-Sub	1920x1080@60Hz	P	P	P	P	P	N/A	N/A	N/A	N/A	N/A	N/A	P	N/A	P	P	
		DVI	1920x1080@60Hz	N/A	N/A	N/A	N/A	N/A	N/A	N/A	N/A	N/A	N/A	N/A	N/A	N/A	N/A	N/A	
24"	H243H(x)	D-Sub	1920x1080@60Hz	P	P	P	P	P	N/A	N/A	N/A	N/A	N/A	N/A	P	N/A	P	P	
		DVI	1920x1080@60Hz	N/A	N/A	N/A	N/A	N/A	N/A	N/A	N/A	N/A	N/A	N/A	N/A	N/A	N/A	N/A	
		HDMI	1920x1080@60Hz	P	P	P	P	P	N/A	N/A	N/A	N/A	N/A	N/A	P	N/A	P	P	

Driver vendor/version: 8.631.1RC7
 Sys Bios: VBIOS: LM Ver. 3103 / A10 / 3.0.03
 Dock: Wi(Allow additional XGP)

Acer LCD Monitor vs. NB				External Single mode					Fn+F5					Driver Utility				Issue Description		
Display Size	Model Name	Input	Optimal Resolution	PnP Monitor Check	Test Resolution	Focus (w/ Monitor Test)	Flicker (w/ Monitor Test, gray color)	Power Sequence	NB LCD	Clone	External	800x600	1024x768	Extended	NB LCD	Clone	External		Extended	
17"	B173(v)	D-Sub	1280x1024@60Hz	P	P	P	P	P	Na	Na	Na	Na	Na	Na	P	Na	P	P		
		DVI	1280x1024@61Hz	Na	Na	Na	Na	Na	Na	Na	Na	Na	Na	Na	Na	Na	Na	Na	Na	
19"	X193HQ(x)	D-Sub	1366x768@60Hz	P	P	P	P	P	Na	Na	Na	Na	Na	Na	P	Na	P	P		
		DVI	1366x768@60Hz	Na	Na	Na	Na	Na	Na	Na	Na	Na	Na	Na	Na	Na	Na	Na	Na	
	V193(x) Viseo 193Ws(v)	D-Sub	1280x1024@75Hz	P	P	P	P	P	Na	Na	Na	Na	Na	Na	P	Na	P	P		
		D-Sub	1440x900@60Hz	P	P	P	P	P	Na	Na	Na	Na	Na	Na	P	Na	P	P		
20"	V203H(v)	D-Sub	1600x900@60Hz	P	P	P	P	P	Na	Na	Na	Na	Na	Na	P	Na	P	P		
		DVI	1600x900@60Hz	Na	Na	Na	Na	Na	Na	Na	Na	Na	Na	Na	Na	Na	Na	Na	Na	
21"	H223HQ(v)	D-Sub	1920x1080@60Hz	P	P	P	P	P	Na	Na	Na	Na	Na	Na	P	Na	P	P		
		DVI	1920x1080@60Hz	Na	Na	Na	Na	Na	Na	Na	Na	Na	Na	Na	Na	Na	Na	Na	Na	
		HDMI	1920x1080@60Hz	Na	Na	Na	Na	Na	Na	Na	Na	Na	Na	Na	Na	Na	Na	Na	Na	
23"	Viseo 223Ws(v)	D-Sub	1680x1050@60Hz	P	P	P	P	P	Na	Na	Na	Na	Na	Na	P	Na	P	P		
		DVI	1680x1050@60Hz	Na	Na	Na	Na	Na	Na	Na	Na	Na	Na	Na	Na	Na	Na	Na	Na	
	X233H(x)	D-Sub	1920x1080@60Hz	P	P	P	P	P	Na	Na	Na	Na	Na	Na	P	Na	P	P		
		DVI	1920x1080@60Hz	Na	Na	Na	Na	Na	Na	Na	Na	Na	Na	Na	Na	Na	Na	Na	Na	
		HDMI	1920x1080@60Hz	Na	Na	Na	Na	Na	Na	Na	Na	Na	Na	Na	Na	Na	Na	Na	Na	
		USB	1920x1080@60Hz	Na	Na	Na	Na	Na	Na	Na	Na	Na	Na	Na	Na	Na	Na	Na	Na	
	B233HU(t)	D-Sub	2048x1152@60Hz	P	P	P	P	P	Na	Na	Na	Na	Na	Na	P	Na	P	P		
		DVI	2048x1152@60Hz	Na	Na	Na	Na	Na	Na	Na	Na	Na	Na	Na	Na	Na	Na	Na	Na	
	V243HQ(t)	D-Sub	1920x1080@60Hz	P	P	P	P	P	Na	Na	Na	Na	Na	Na	P	Na	P	P		
		DVI	1920x1080@60Hz	Na	Na	Na	Na	Na	Na	Na	Na	Na	Na	Na	Na	Na	Na	Na	Na	
24"	H243H(x)	D-Sub	1920x1080@60Hz	P	P	P	P	P	Na	Na	Na	Na	Na	Na	P	Na	P	P		
		DVI	1920x1080@60Hz	Na	Na	Na	Na	Na	Na	Na	Na	Na	Na	Na	Na	Na	Na	Na	Na	
		HDMI	1920x1080@60Hz	Na	Na	Na	Na	Na	Na	Na	Na	Na	Na	Na	Na	Na	Na	Na	Na	

Driver vendor/version: 8.631.1RC7
 Sys Bios: VBIOS: LM Ver. 3103 / A10 / 3.0.03
 Dock: Wi(Accelerate Existing)

Acer LCD Monitor vs. NB				External Single mode					Fn+F5					Driver Utility				Issue Description		
Display Size	Model Name	Input	Optimal Resolution	PnP Monitor Check	Test Resolution	Focus (w/ Monitor Test)	Flicker (w/ Monitor Test, gray color)	Power Sequence	NB LCD	Clone	External	800x600	1024x768	Extended	NB LCD	Clone	External		Extended	
17"	B173(v)	D-Sub	1280x1024@60Hz	P	P	P	P	P	Na	Na	Na	Na	Na	Na	P	Na	P	P		
		DVI	1280x1024@61Hz	Na	Na	Na	Na	Na	Na	Na	Na	Na	Na	Na	Na	Na	Na	Na	Na	
19"	X193HQ(x)	D-Sub	1366x768@60Hz	P	P	P	P	P	Na	Na	Na	Na	Na	Na	P	Na	P	P		
		DVI	1366x768@60Hz	Na	Na	Na	Na	Na	Na	Na	Na	Na	Na	Na	Na	Na	Na	Na	Na	
	V193(x) Viseo 193Ws(v)	D-Sub	1280x1024@75Hz	P	P	P	P	P	Na	Na	Na	Na	Na	Na	P	Na	P	P		
		D-Sub	1440x900@60Hz	P	P	P	P	P	Na	Na	Na	Na	Na	Na	P	Na	P	P		
20"	V203H(v)	D-Sub	1600x900@60Hz	P	P	P	P	P	Na	Na	Na	Na	Na	Na	P	Na	P	P		
		DVI	1600x900@60Hz	Na	Na	Na	Na	Na	Na	Na	Na	Na	Na	Na	Na	Na	Na	Na	Na	
21"	H223HQ(v)	D-Sub	1920x1080@60Hz	P	P	P	P	P	Na	Na	Na	Na	Na	Na	P	Na	P	P		
		DVI	1920x1080@60Hz	Na	Na	Na	Na	Na	Na	Na	Na	Na	Na	Na	Na	Na	Na	Na	Na	
		HDMI	1920x1080@60Hz	Na	Na	Na	Na	Na	Na	Na	Na	Na	Na	Na	Na	Na	Na	Na	Na	
23"	Viseo 223Ws(v)	D-Sub	1680x1050@60Hz	P	P	P	P	P	Na	Na	Na	Na	Na	Na	P	Na	P	P		
		DVI	1680x1050@60Hz	Na	Na	Na	Na	Na	Na	Na	Na	Na	Na	Na	Na	Na	Na	Na	Na	
	X233H(x)	D-Sub	1920x1080@60Hz	P	P	P	P	P	Na	Na	Na	Na	Na	Na	P	Na	P	P		
		DVI	1920x1080@60Hz	Na	Na	Na	Na	Na	Na	Na	Na	Na	Na	Na	Na	Na	Na	Na	Na	
		HDMI	1920x1080@60Hz	Na	Na	Na	Na	Na	Na	Na	Na	Na	Na	Na	Na	Na	Na	Na	Na	
	B233HU(t)	USB	1920x1080@60Hz	Na	Na	Na	Na	Na	Na	Na	Na	Na	Na	Na	Na	Na	Na	Na	Na	
		D-Sub	2048x1152@60Hz	P	P	P	P	P	Na	Na	Na	Na	Na	Na	Na	P	Na	P	P	
	V243HQ(t)	DVI	2048x1152@60Hz	Na	Na	Na	Na	Na	Na	Na	Na	Na	Na	Na	Na	Na	Na	Na	Na	
		HDMI	2048x1152@60Hz	Na	Na	Na	Na	Na	Na	Na	Na	Na	Na	Na	Na	Na	Na	Na	Na	
	24"	H243H(x)	D-Sub	1920x1080@60Hz	P	P	P	P	P	Na	Na	Na	Na	Na	Na	P	Na	P	P	
DVI			1920x1080@60Hz	Na	Na	Na	Na	Na	Na	Na	Na	Na	Na	Na	Na	Na	Na	Na	Na	
		HDMI	1920x1080@60Hz	Na	Na	Na	Na	Na	Na	Na	Na	Na	Na	Na	Na	Na	Na	Na	Na	

Remarks:

- "P"=> Test Passed
- "F1"=> Test Failed with Severity 1 issues: Critical bug which will impact user behavior and must be fixed immediately.
- "F2"=> Test Failed with Severity 2 issues: Serious bug which must be fixed before shipping.
- "F3"=> Test Failed with Severity 3 issues: Minor issue which could be acceptable.
- "N/A"=> No available port for test

Notebook vs. Project Crosscheck List

Driver vendor/version: 8.631.1RC7
 Sys Bios: VBIOS: LM Ver. 3103 / A10 / 3.0.03
 Dock: Wi(Allow additional XGP)

Acer Projector vs. NB			External Single mode					Fn+F5 switch test (3 times)					Driver Utility switch test				
Model Name	Input	Native Resolution	PnP Monitor Check	Test Resolution	Focus (w/ Monitor Test)	Flicker (w/ Monitor Test, gray color)	Power Sequence	NB LCD	Clone	External	800x600	1024x768	Extended	NB LCD	Clone	External	Extended
k10	D-Sub	Native SVGA, 800x600@60Hz	P	P	P	P	P	N/A	N/A	N/A	N/A	N/A	N/A	P	P	P	P
X1230	D-Sub	Native SVGA, 1024x768@60Hz	P	P	P	P	P	N/A	N/A	N/A	N/A	N/A	N/A	P	P	P	P
X1260	D-Sub	Native SVGA, 1024x768@60Hz	P	P	P	P	P	N/A	N/A	N/A	N/A	N/A	N/A	P	P	P	P
P3250	D-Sub	Native XGA, 1024x768@60Hz	P	P	P	P	P	N/A	N/A	N/A	N/A	N/A	N/A	P	P	P	P
	HDMI	Native XGA, 1024x768@60Hz	P	P	P	P	P	N/A	N/A	N/A	N/A	N/A	N/A	P	P	P	P
H5350	D-Sub	Native 720P, 1280x720@60Hz	P	P	P	P	P	N/A	N/A	N/A	N/A	N/A	N/A	P	P	P	P
	HDMI	Native 720P, 1280x720@60Hz	P	P	P	P	P	N/A	N/A	N/A	N/A	N/A	N/A	P	P	P	P
S1200	D-Sub	Native XGA, 1024x768@60Hz	P	P	P	P	P	N/A	N/A	N/A	N/A	N/A	N/A	P	P	P	P
	HDMI	Native XGA, 1024x768@60Hz	P	P	P	P	P	N/A	N/A	N/A	N/A	N/A	N/A	P	P	P	P
P1266i	D-Sub	Native XGA, 1024x768@60Hz	P	P	P	P	P	N/A	N/A	N/A	N/A	N/A	N/A	P	P	P	P
	DVI	Native XGA, 1024x768@60Hz	N/A	N/A	N/A	N/A	N/A	N/A	N/A	N/A	N/A	N/A	N/A	N/A	N/A	N/A	N/A
P5280	D-Sub	Native XGA, 1024x768@60Hz	P	P	P	P	P	N/A	N/A	N/A	N/A	N/A	N/A	P	P	P	P
	DVI	Native XGA, 1024x768@60Hz	N/A	N/A	N/A	N/A	N/A	N/A	N/A	N/A	N/A	N/A	N/A	N/A	N/A	N/A	N/A
	HDMI	Native XGA, 1024x768@60Hz	P	P	P	P	P	N/A	N/A	N/A	N/A	N/A	N/A	P	P	P	P
P7270i	D-Sub	Native XGA, 1024x768@60Hz	P	P	P	P	P	N/A	N/A	N/A	N/A	N/A	N/A	P	P	P	P
	DVI	Native XGA, 1024x768@60Hz	N/A	N/A	N/A	N/A	N/A	N/A	N/A	N/A	N/A	N/A	N/A	N/A	N/A	N/A	N/A
	HDMI	Native XGA, 1024x768@60Hz	P	P	P	P	P	N/A	N/A	N/A	N/A	N/A	N/A	P	P	P	P
P5370W	D-Sub	Native XGA, 1280x800@60Hz	P	P	P	P	P	N/A	N/A	N/A	N/A	N/A	N/A	P	P	P	P
	DVI	Native XGA, 1280x800@60Hz	N/A	N/A	N/A	N/A	N/A	N/A	N/A	N/A	N/A	N/A	N/A	N/A	N/A	N/A	N/A
	HDMI	Native XGA, 1280x800@60Hz	P	P	P	P	P	N/A	N/A	N/A	N/A	N/A	N/A	P	P	P	P

Driver vendor/version: 8.631.1RC7
 Sys Bios: VBIOS: LM Ver. 3103 / A10 / 3.0.03
 Dock: Wi(Allow additional XGP)

Acer Projector vs. NB			External Single mode					Fn+F5					Driver Utility				
Model Name	Input	Native Resolution	PnP Monitor Check	Test Resolution	Focus (w/ Monitor Test)	Flicker (w/ Monitor Test, gray color)	Power Sequence	NB LCD	Clone	External	800x600	1024x768	Extended	NB LCD	Clone	External	Extended
k10	D-Sub	Native SVGA, 800x600@60Hz	P	P	P	P	P	Na	Na	Na	Na	Na	Na	P	P	P	P
X1230	D-Sub	Native SVGA, 1024x768@60Hz	P	P	P	P	P	Na	Na	Na	Na	Na	Na	P	P	P	P
X1260	D-Sub	Native SVGA, 1024x768@60Hz	P	P	P	P	P	Na	Na	Na	Na	Na	Na	P	P	P	P
P3250	D-Sub	Native XGA, 1024x768@60Hz	P	P	P	P	P	Na	Na	Na	Na	Na	Na	P	P	P	P
	HDMI	Native XGA, 1024x768@60Hz	P	P	P	P	P	Na	Na	Na	Na	Na	Na	P	P	P	P
H5350	D-Sub	Native 720P, 1280x720@60Hz	P	P	P	P	P	Na	Na	Na	Na	Na	Na	P	P	P	P
	HDMI	Native 720P, 1280x720@60Hz	P	P	P	P	P	Na	Na	Na	Na	Na	Na	P	P	P	P
S1200	D-Sub	Native XGA, 1024x768@60Hz	P	P	P	P	P	Na	Na	Na	Na	Na	Na	P	P	P	P
	HDMI	Native XGA, 1024x768@60Hz	P	P	P	P	P	Na	Na	Na	Na	Na	Na	P	P	P	P
P1266i	D-Sub	Native XGA, 1024x768@60Hz	P	P	P	P	P	Na	Na	Na	Na	Na	Na	P	P	P	P
	DVI	Native XGA, 1024x768@60Hz	Na	Na	Na	Na	Na	Na	Na	Na	Na	Na	Na	Na	Na	Na	Na
P5280	D-Sub	Native XGA, 1024x768@60Hz	P	P	P	P	P	Na	Na	Na	Na	Na	Na	P	P	P	P
	DVI	Native XGA, 1024x768@60Hz	Na	Na	Na	Na	Na	Na	Na	Na	Na	Na	Na	Na	Na	Na	Na
	HDMI	Native XGA, 1024x768@60Hz	P	P	P	P	P	Na	Na	Na	Na	Na	Na	P	P	P	P
P7270i	D-Sub	Native XGA, 1024x768@60Hz	P	P	P	P	P	Na	Na	Na	Na	Na	Na	P	P	P	P
	DVI	Native XGA, 1024x768@60Hz	Na	Na	Na	Na	Na	Na	Na	Na	Na	Na	Na	Na	Na	Na	Na
	HDMI	Native XGA, 1024x768@60Hz	P	P	P	P	P	Na	Na	Na	Na	Na	Na	P	P	P	P
P5370W	D-Sub	Native XGA, 1280x800@60Hz	P	P	P	P	P	Na	Na	Na	Na	Na	Na	P	P	P	P
	DVI	Native XGA, 1280x800@60Hz	Na	Na	Na	Na	Na	Na	Na	Na	Na	Na	Na	Na	Na	Na	Na
	HDMI	Native XGA, 1280x800@60Hz	P	P	P	P	P	Na	Na	Na	Na	Na	Na	P	P	P	P

Driver vendor/version: 8.631.1RC7
 Sys Bios: VBIOS: LM Ver. 3103 / A10 / 3.0.03
 Dock: Wi(Accelerate Existing)

Acer Projector vs. NB			External Single mode					Fn+F5					Driver Utility				
Model Name	Input	Native Resolution	PnP Monitor Check	Test Resolution	Focus (w/ Monitor Test)	Flicker (w/ Monitor Test, gray color)	Power Sequence	NB LCD	Clone	External	800x600	1024x768	Extended	NB LCD	Clone	External	Extended
k10	D-Sub	Native SVGA, 800x600@60Hz	P	P	P	P	P	Na	Na	Na	Na	Na	Na	P	P	P	P
X1230	D-Sub	Native SVGA, 1024x768@60Hz	P	P	P	P	P	Na	Na	Na	Na	Na	Na	P	P	P	P
X1260	D-Sub	Native SVGA, 1024x768@60Hz	P	P	P	P	P	Na	Na	Na	Na	Na	Na	P	P	P	P
P3250	D-Sub	Native XGA, 1024x768@60Hz	P	P	P	P	P	Na	Na	Na	Na	Na	Na	P	P	P	P
	HDMI	Native XGA, 1024x768@60Hz	P	P	P	P	P	Na	Na	Na	Na	Na	Na	P	P	P	P
H5350	D-Sub	Native 720P, 1280x720@60Hz	P	P	P	P	P	Na	Na	Na	Na	Na	Na	P	P	P	P
	HDMI	Native 720P, 1280x720@60Hz	P	P	P	P	P	Na	Na	Na	Na	Na	Na	P	P	P	P
S1200	D-Sub	Native XGA, 1024x768@60Hz	P	P	P	P	P	Na	Na	Na	Na	Na	Na	P	P	P	P
	HDMI	Native XGA, 1024x768@60Hz	P	P	P	P	P	Na	Na	Na	Na	Na	Na	P	P	P	P
P1266i	D-Sub	Native XGA, 1024x768@60Hz	P	P	P	P	P	Na	Na	Na	Na	Na	Na	P	P	P	P
	DVI	Native XGA, 1024x768@60Hz	Na	Na	Na	Na	Na	Na	Na	Na	Na	Na	Na	Na	Na	Na	Na
P5280	D-Sub	Native XGA, 1024x768@60Hz	P	P	P	P	P	Na	Na	Na	Na	Na	Na	P	P	P	P
	DVI	Native XGA, 1024x768@60Hz	Na	Na	Na	Na	Na	Na	Na	Na	Na	Na	Na	Na	Na	Na	Na
	HDMI	Native XGA, 1024x768@60Hz	P	P	P	P	P	Na	Na	Na	Na	Na	Na	P	P	P	P
P7270i	D-Sub	Native XGA, 1024x768@60Hz	P	P	P	P	P	Na	Na	Na	Na	Na	Na	P	P	P	P
	DVI	Native XGA, 1024x768@60Hz	Na	Na	Na	Na	Na	Na	Na	Na	Na	Na	Na	Na	Na	Na	Na
	HDMI	Native XGA, 1024x768@60Hz	P	P	P	P	P	Na	Na	Na	Na	Na	Na	P	P	P	P
P5370W	D-Sub	Native XGA, 1280x800@60Hz	P	P	P	P	P	Na	Na	Na	Na	Na	Na	P	P	P	P
	DVI	Native XGA, 1280x800@60Hz	Na	Na	Na	Na	Na	Na	Na	Na	Na	Na	Na	Na	Na	Na	Na
	HDMI	Native XGA, 1280x800@60Hz	P	P	P	P	P	Na	Na	Na	Na	Na	Na	P	P	P	P

Remarks:

- "P"=> Test Passed
- "F1"=> Test Failed with Severity 1 issues: Critical bug which will impact user behavior and must be fixed immediately.
- "F2"=> Test Failed with Severity 2 issues: Serious bug which must be fixed before shipping.
- "F3"=> Test Failed with Severity 3 issues: Minor issue which could be acceptable.
- "N/A"=> No available port for test

Online Support Information

This section describes online technical support services available to help you repair your Acer Systems.

If you are a distributor, dealer, ASP or TPM, please refer your technical queries to your local Acer branch office. Acer Branch Offices and Regional Business Units may access our website. However some information sources will require a user i.d. and password. These can be obtained directly from Acer CSD Taiwan.

Acer's Website offers you convenient and valuable support resources whenever you need them.

In the Technical Information section you can download information on all of Acer's Graphic Docks, Notebook, Desktop and Server models including:

- Service guides for all models
- User's manuals
- Training materials
- Bios updates
- Software utilities
- Spare parts lists
- TABs (Technical Announcement Bulletin)

For these purposes, we have included an Acrobat File to facilitate the problem-free downloading of our technical material.

Also contained on this website are:

- Detailed information on Acer's International Traveler's Warranty (ITW)
- Returned material authorization procedures
- An overview of all the support services we offer, accompanied by a list of telephone, fax and email contacts for all your technical queries.

We are always looking for ways to optimize and improve our services, so if you have any suggestions or comments, please do not hesitate to communicate these to us.

C

Common Problems 28, 29
CRT Cable
 Removing 17, 20

D

Display 2

E

External Module Disassembly
 Flowchart 8

F

Features 1
FRU (Field Replaceable Unit) List 35

H

Hot Keys 5

J

Jumper and Connector Locations 33

L

LCD Module Disassembly
 Flowchart 19

M

Main Unit Disassembly
 Flowchart 8
Mainboard
 Removing 17, 20
Memory Check 28, 29

O

Online Support Information 43

P

Panel 3
Power On Failure 28, 29

S

System

Block Diagram 2

T

Test Compatible Components 39
Thermal Module
 Removing 18, 19
Troubleshooting
 Power On 28, 29

U

Upper Cover
 Removing 10, 13

W

Windows 2000 Environment Test 39

