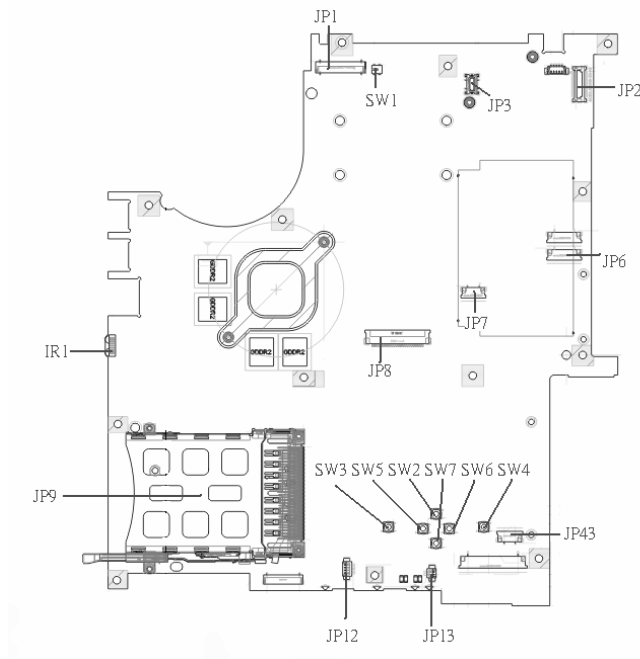


# Jumper and Connector Locations

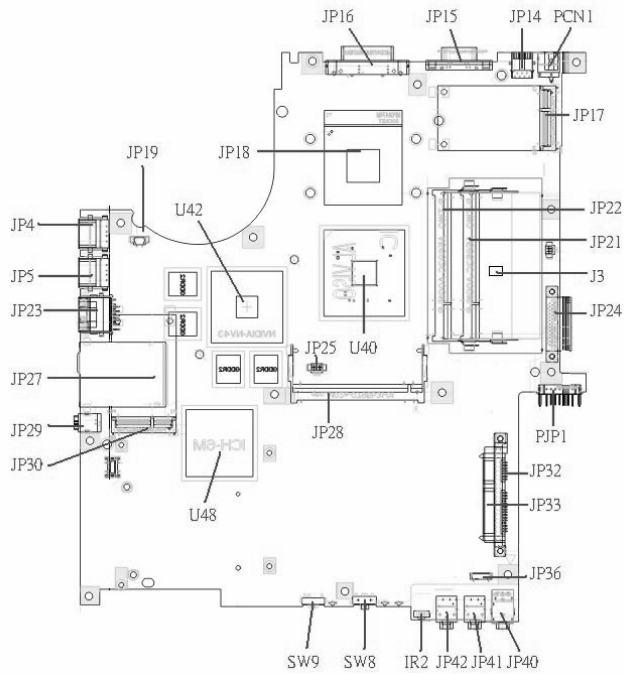
## Board Layout

### Top View



1	JP1	LCD Connector	10	SW7	Touchpad Down Button
2	SW1	Lid Switch	11	SW2	Touchpad Up Button
3	JP3	MDC Connector	12	SW5	Touchpad Left Button
4	JP2	Power Button Connector	13	SW3	Touchpad Left Button
5	JP6	Media Board Connector	14	JP13	Internal Microphone Connector
6	JP7	Touchpad Board Connector	15	JP12	Internal Speaker Connector
7	JP43	SIM Card Connector	16	JP9	PCMCIA Socket
8	SW4	Touchpad Right Button	17	IR1	FIR Module
9	SW6	Touchpad Left Button	18	JP8	Internal Keyboard Connector

## Bottom View

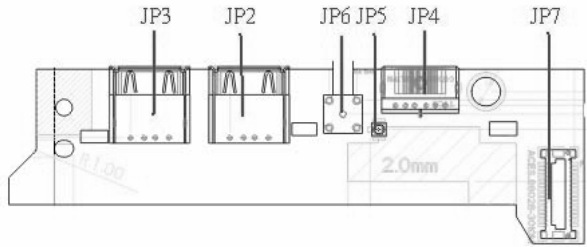


**NOTE:** This is engineering sample. The image above may not be exactly the same as the real main board you get.

1	JP19	FAN Connector	17	JP40	Headphone/SPDIF Jack
2	U42	VGA Chipset	18	JP41	Line-In Jack
3	JP18	CPU Socket	19	JP42	Microphone-in Jack
4	JP16	DVI Connector	20	IR2	CIR Module
5	JP15	CRT Connector	21	SW8	Wireless LAN Switch
6	JP14	TV-Out Connector	22	SW9	Bluetooth and 3G Switch
7	PCN1	DC-IN Jack	23	U48	South Bridge Chipset
8	JP17	Mini Card Connector	24	JP30	Mini Card Connector
9	JP22	DDRII so-DIMM Socket	25	JP29	IEEE 1394 Connector
10	JP21	DDRII so-DIMM Socket	26	JP27	5 IN1 Socket
11	J3	Clear CMOS Jumper	27	JP23	RJ45 Connector
12	JP24	ODD Connector	28	JP5	USB Connector
13	PJP1	Battery Connector	29	JP4	USB Connector
14	JP32	HDD Connector (SATA)	30	JP28	MINIPCI Connector (TV-Tuner)
15	JP33	HDD Connector (PATA)	31	JP25	FAN Connector
16	JP36	Bluetooth Connector	32	U40	North Bridge Chipset

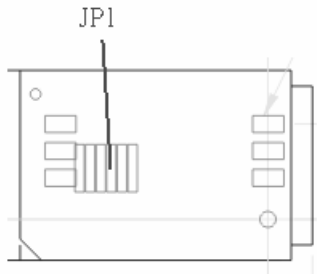


## Media Board Bottom View



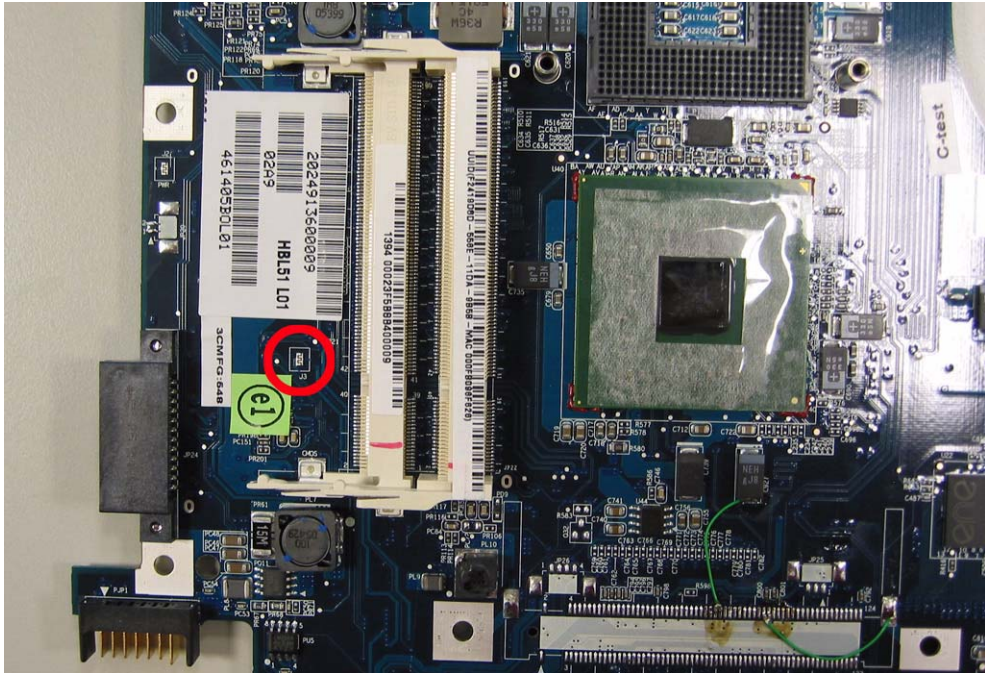
Label	Description
JP3	USB Connector
JP2	USB Connector
JP6	RF INe Connector
JP5	RF Cable Connector
JP4	AV IN Connector
JP7	Board to Main Board Connector

## LS-2923P Power Board Top View



Label	Description
JP1	SIM Card Connector

## Jumper Setting



Label	Description
J3	Clear CMOS Jumper <b>Note: J3 locates at bottom side of the main board as the red circle highlighted.</b>

