



Installing Zune Flash 2nd Generation Communications Board

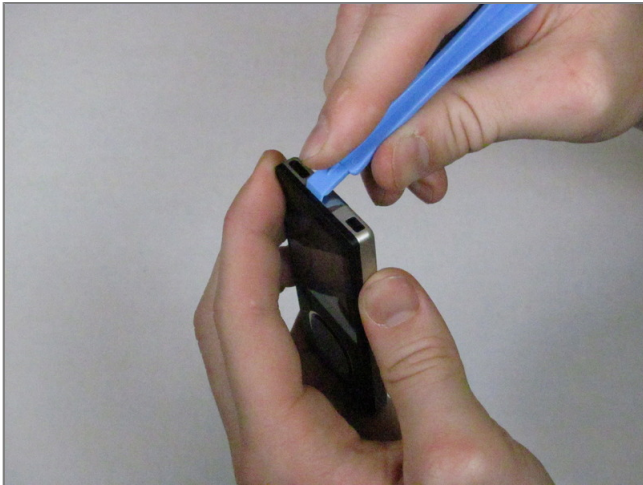
Tools used in this guide

- [Metal Spudger](#)
- [Plastic Opening Tools](#)
- [Tri-wing Screwdriver](#)



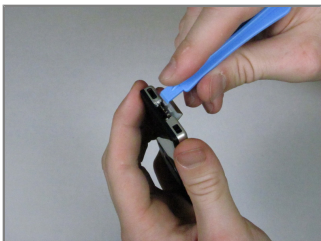
Step 1 - Back Cover

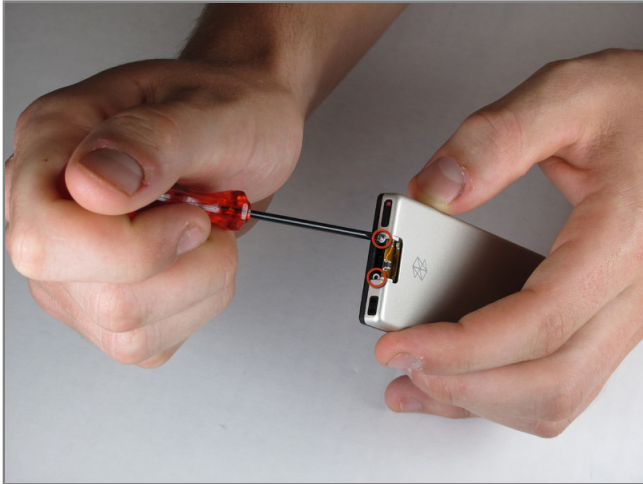
- Prior to disassembly, verify the hold switch is engaged to ensure the device will not turn on during the procedure.
- If the device turns on while it is being disassembled it could cause irreversible damage to the device.
- PICS MAKE NO SENSE.



Step 2

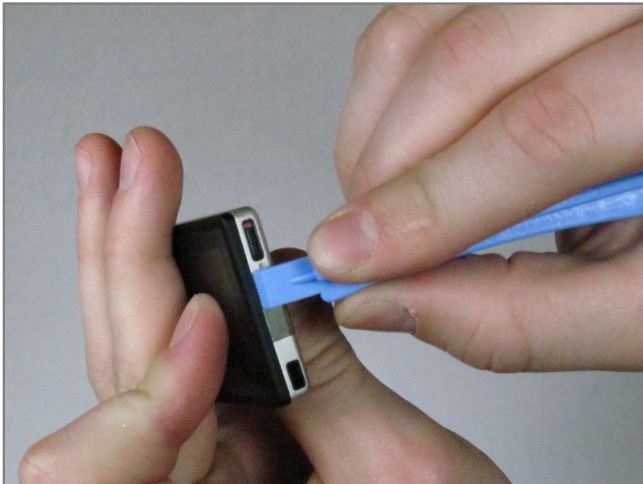
- Remove the top metal clip by inserting an iPod opening tool in between the faceplate and back cover and pulling gently back as shown in the images.
- You should hear a 'click' as the clip detaches from the device.





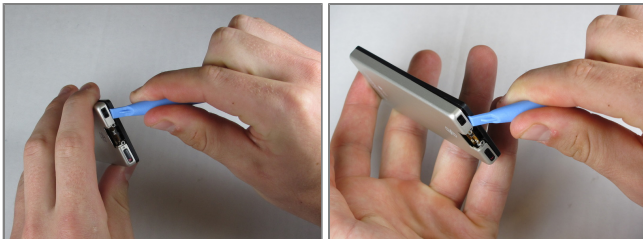
Step 3

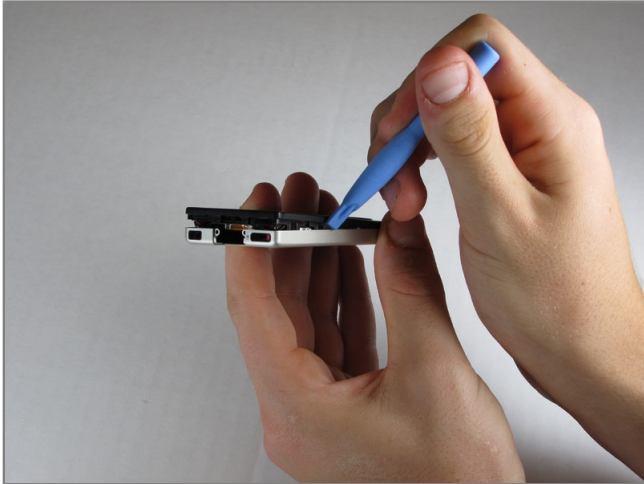
- Remove the two screws shown using a small Tri-Wing screwdriver.
- You will need to use a very small Tri-Wing screwdriver to ensure that you do not strip the screws.



Step 4

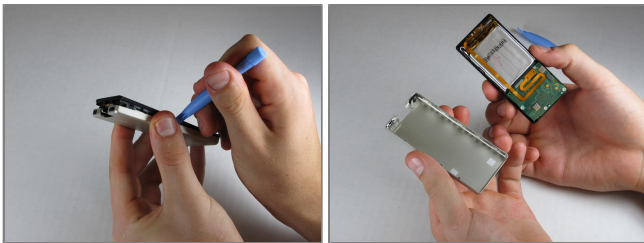
- Insert the iPod opening tool between the faceplate and the back cover, starting from the top and slowly work your way around the device.





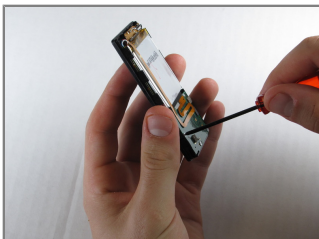
Step 5

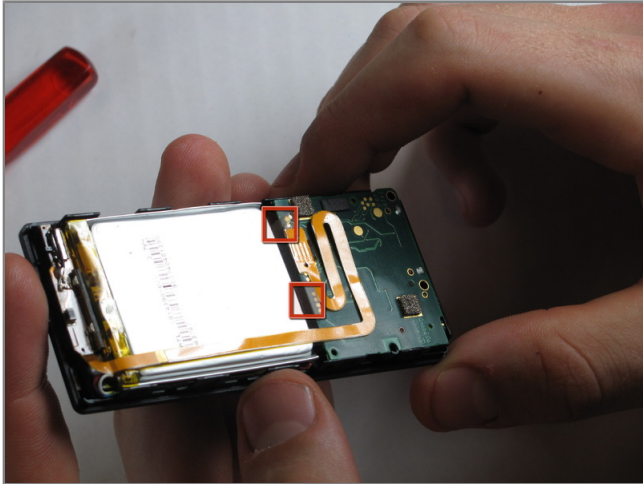
- Work your way around the Zune until the back cover comes free. Remove the back plate and set it aside.



Step 6 - Communications Board

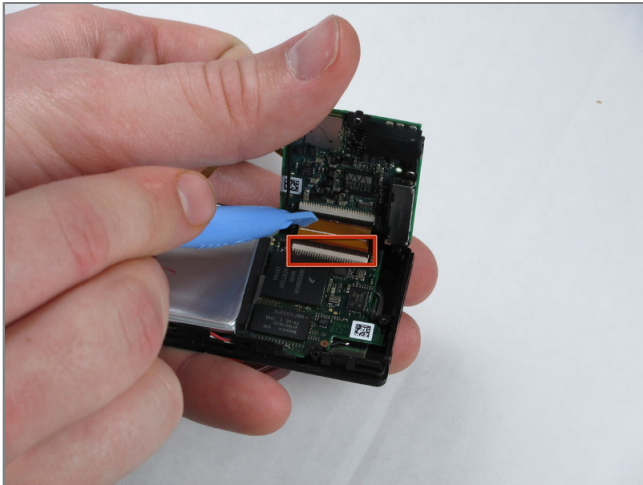
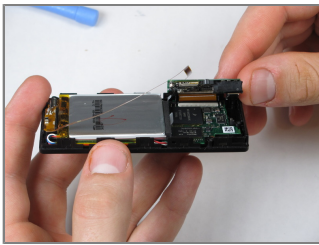
- Remove the three screws (5.5mm by 3mm) from the backside of the Zune using a small Tri-Wing screwdriver.





Step 7

- Use your finger to pry back the two clear flaps.
- Slowly lift the communications board that was held down by the clear flaps.
- Be careful not to accidentally detach the slim ribbon that connects between the communications board and the device.



Step 8

- Disconnect the ribbon cable with the iPod opening tool by flipping up the black plastic flap where the ribbon cable connects to the memory board.
- Pull the ribbon cable out of the memory board.



Step 9

- Peel the slim ribbon cable off the communications board using your fingers.
- This slim ribbon is attached using an adhesive, so it cannot be reattached without more adhesive.



Step 10

- Pull the cable connector straight up using your fingers.
- Communications board remains.

