



Installing Zune Flash 2nd Generation Battery and Memory Board

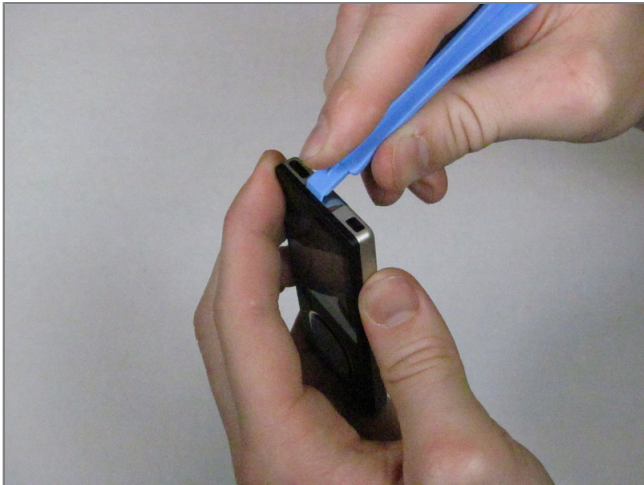
Tools used in this guide

- [Metal Spudger](#)
- [Plastic Opening Tools](#)
- [Soldering Iron](#)
- [Tri-wing Screwdriver](#)



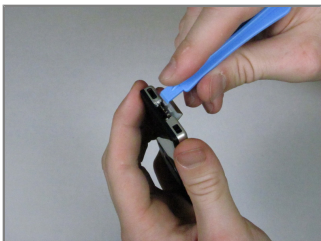
Step 1 - Back Cover

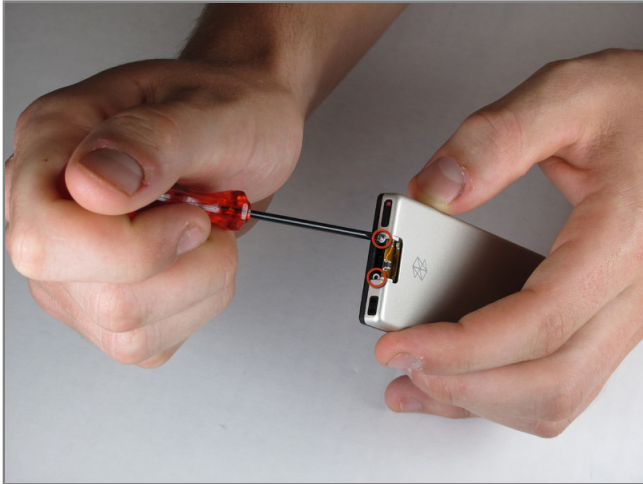
- Prior to disassembly, verify the hold switch is engaged to ensure the device will not turn on during the procedure.
- If the device turns on while it is being disassembled it could cause irreversible damage to the device.
- PICS MAKE NO SENSE.



Step 2

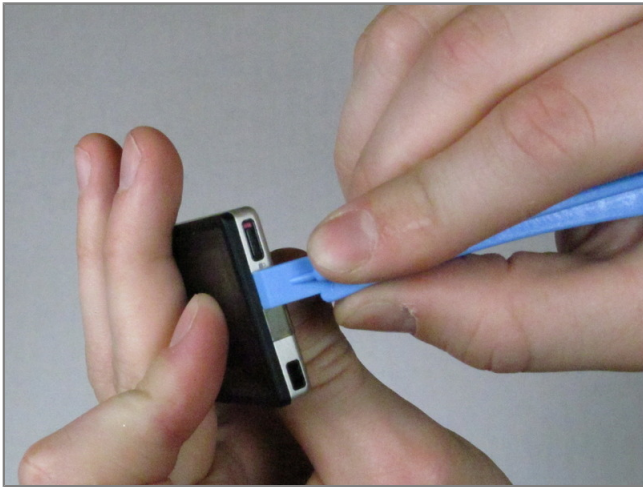
- Remove the top metal clip by inserting an iPod opening tool in between the faceplate and back cover and pulling gently back as shown in the images.
- You should hear a 'click' as the clip detaches from the device.





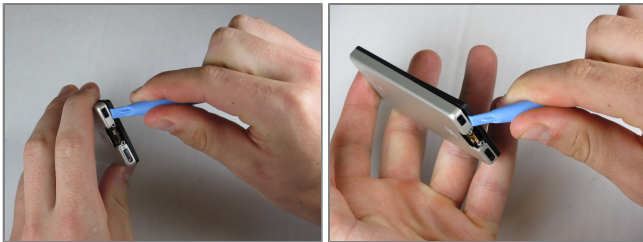
Step 3

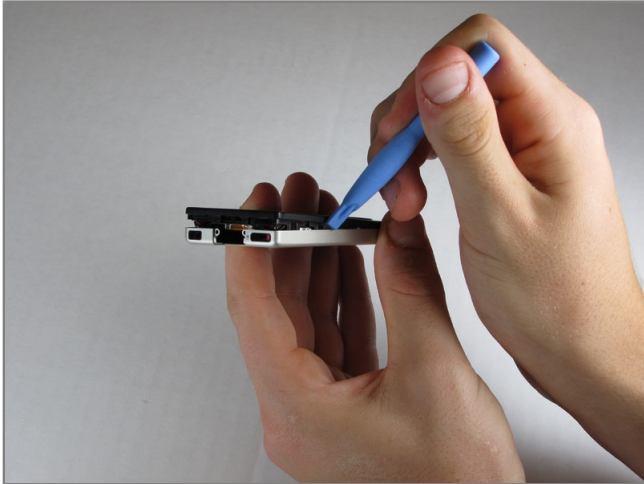
- Remove the two screws shown using a small Tri-Wing screwdriver.
- You will need to use a very small Tri-Wing screwdriver to ensure that you do not strip the screws.



Step 4

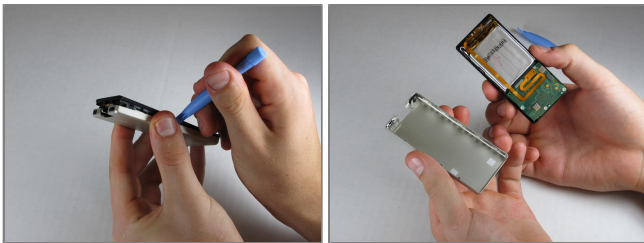
- Insert the iPod opening tool between the faceplate and the back cover, starting from the top and slowly work your way around the device.





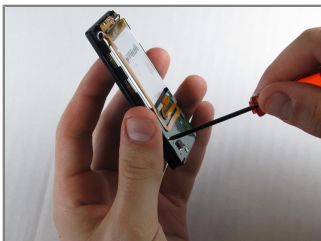
Step 5

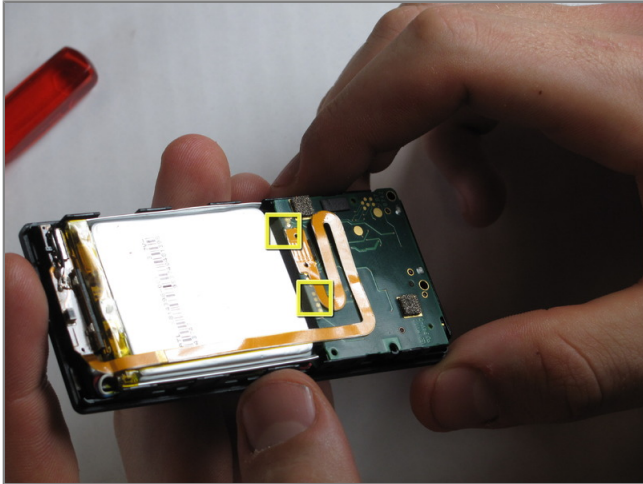
- Work your way around the Zune until the back cover comes free. Remove the back plate and set it aside.



Step 6 - Face Plate

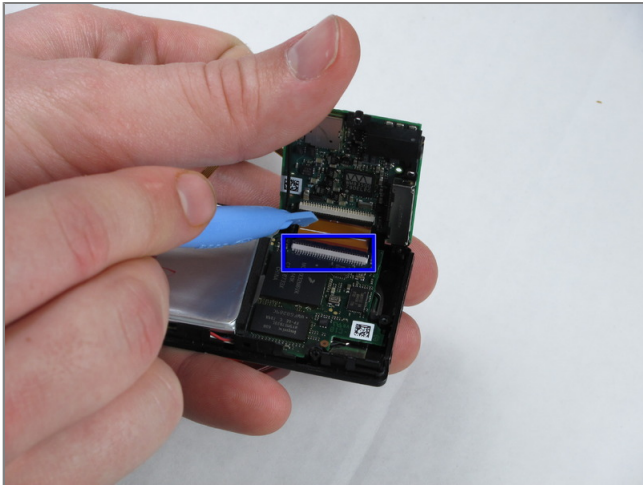
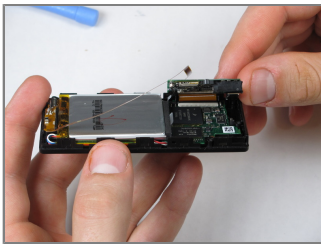
- Remove the three screws (5.5mm by 3mm) from the backside of the Zune using a small Tri-Wing screwdriver.
- Be sure to put this set of screws aside since they are a different size than any other screws in the device.





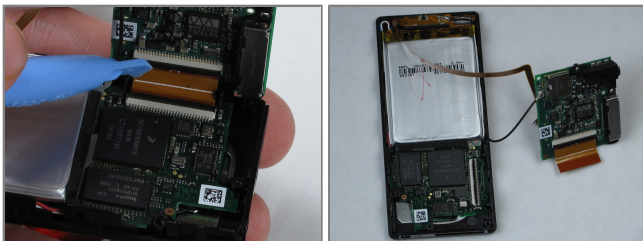
Step 7

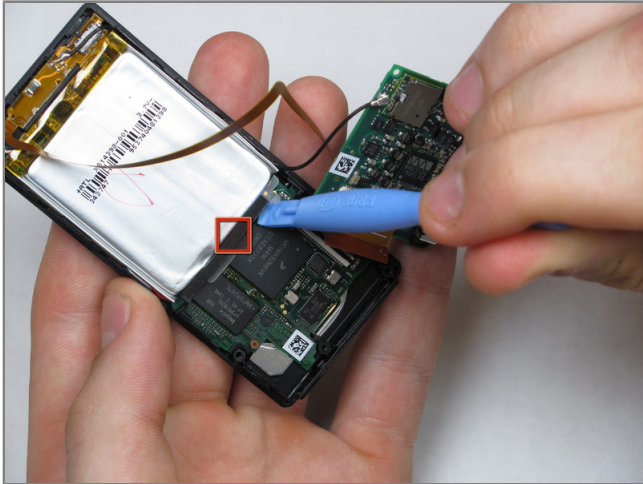
- Use your finger or an iPod opening tool to pry back the two clear flaps.
- Next lift the communications board that was being held down by the clear flaps.
- Be careful not to accidentally detach the slim ribbon that connects between the communications board and the device.



Step 8

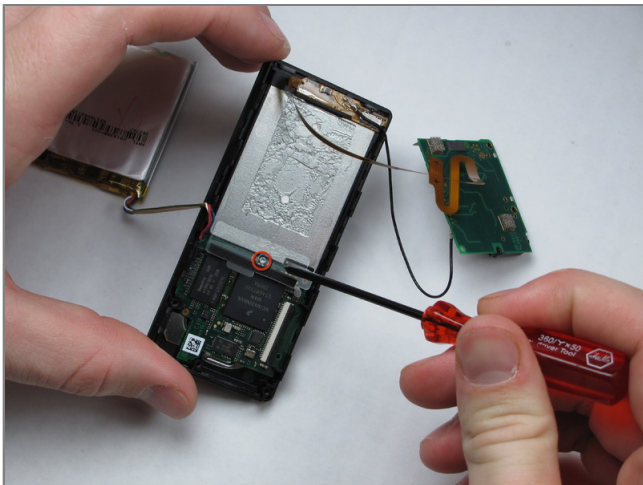
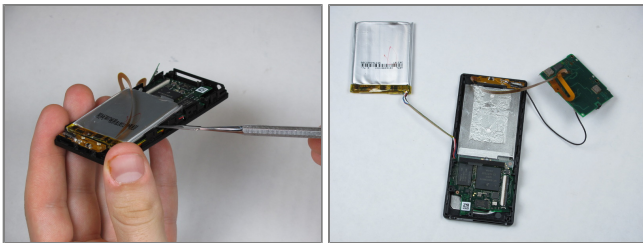
- Disconnect the ribbon with the iPod opening tool by flipping up the black plastic flap where the ribbon connects to the memory board.
- Carefully pull the ribbon out of the memory board, ensuring that the black plastic flap is up before removal to avoid the ripping the ribbon.





Step 9

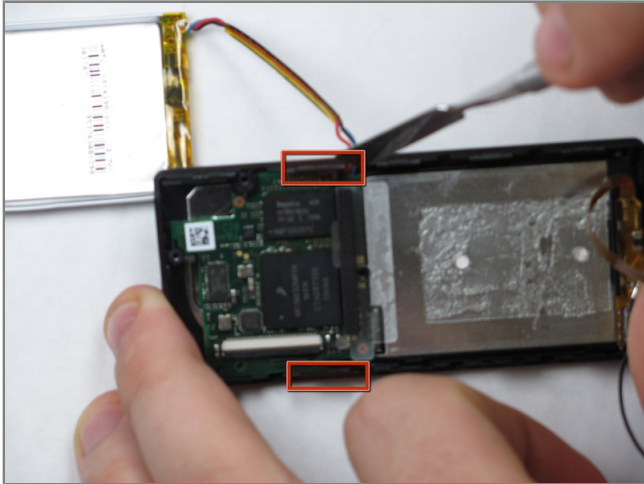
- Remove the battery by prying the battery off from the bottom with an iPod opening tool.
- There is an adhesive between the battery and the device, therefore use a metal spudger to finish detaching the battery.
- Be sure not to puncture the battery in any way when using the metal spudger.



Step 10

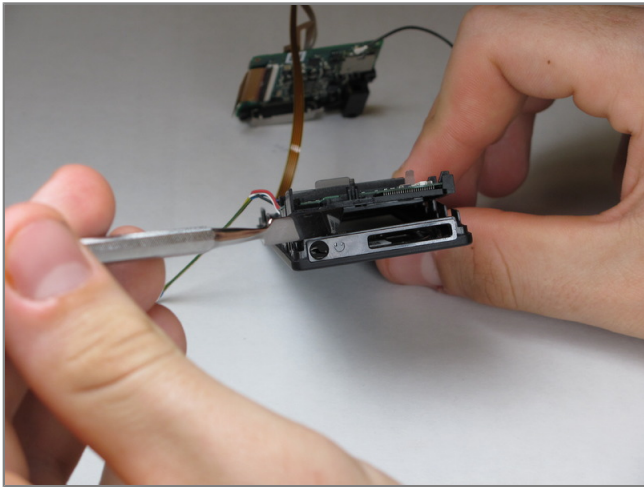
- Remove the single screw under the battery using a small Tri-Wing screwdriver.





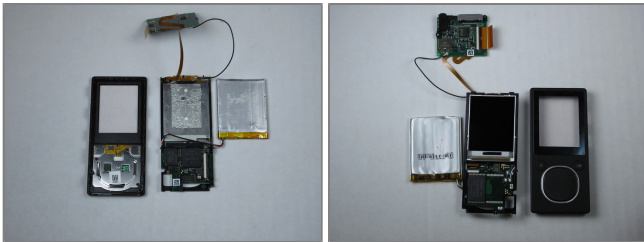
Step 11

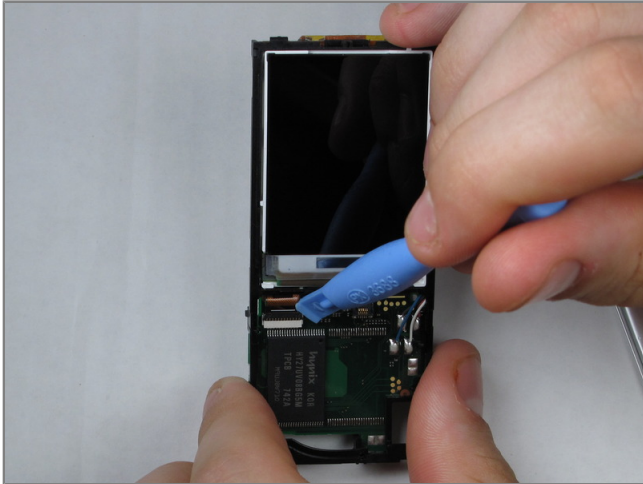
- Disconnect the faceplate from the device by depressing the two tabs located near the middle of each of the sides using a metal spudger.



Step 12

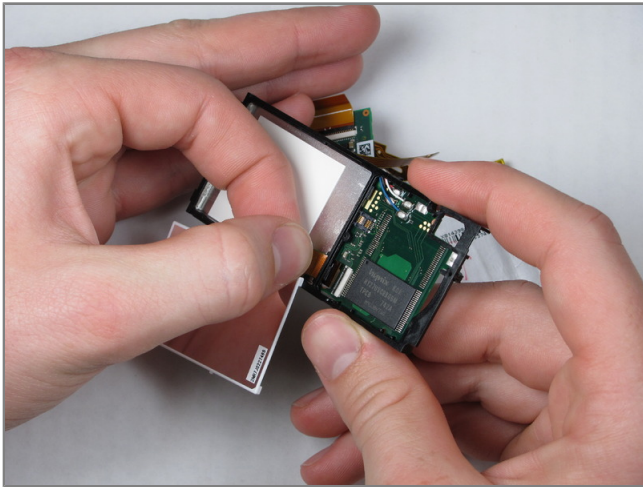
- Remove the faceplate by using a metal spudger to separate it from the remaining components.





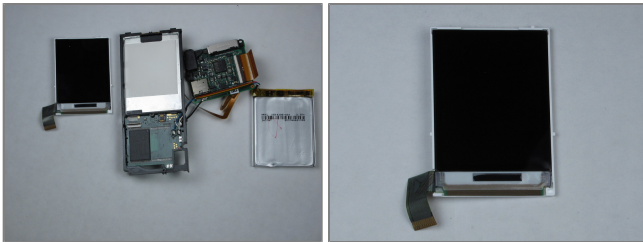
Step 13 - LCD Display

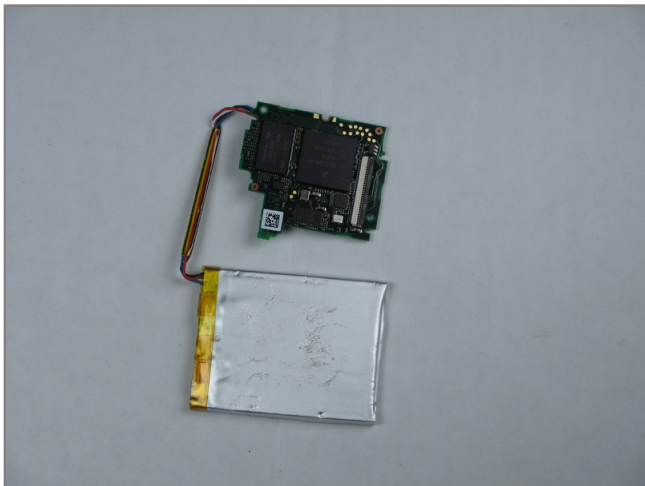
- Release the LCD connector ribbon by flipping up the black switch. This will disconnect the LCD from the device.
- At this point the LCD screen should be easily separable from the device.



Step 14

- Remove the LCD by carefully pulling directly on the ribbon.
- Pull slowly to ensure that the ribbon isn't damaged upon removal.





Step 15 - Battery and Memory Board

- Detaching the memory board from the battery requires desoldering the 4 joints on the memory board.
- It will be easiest to go in the order blue, yellow, black, red.

