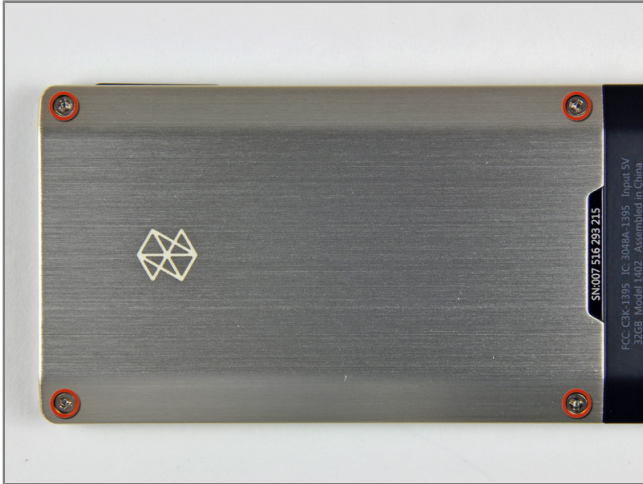




Installing Microsoft Zune HD Lower Rear Panel

Tools used in this guide

- [Plastic Opening Tools](#)
- [Tri-wing Screwdriver](#)



Step 1 - Upper Rear Panel

- Remove the four Tri-Wing screws securing the upper rear panel to the inner chassis.



Step 2

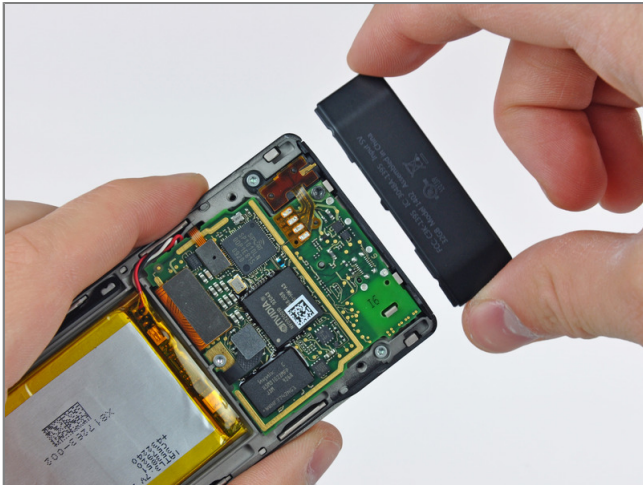
- Slightly rotate the top edge of the upper rear panel away from the Zune.
- Lift the upper rear panel straight up off the black plastic lower rear panel.





Step 3 - Lower Rear Panel

- Insert a small iPod opening tool into the gap between the logic board and one side of the black plastic lower rear panel.
- Carefully twist the iPod opening tool to pop the lower rear panel off the clips attaching it to the Zune.
- Repeat this process for the other side of the lower rear panel.



Step 4

- Carefully slide the lower rear panel away from the Zune.