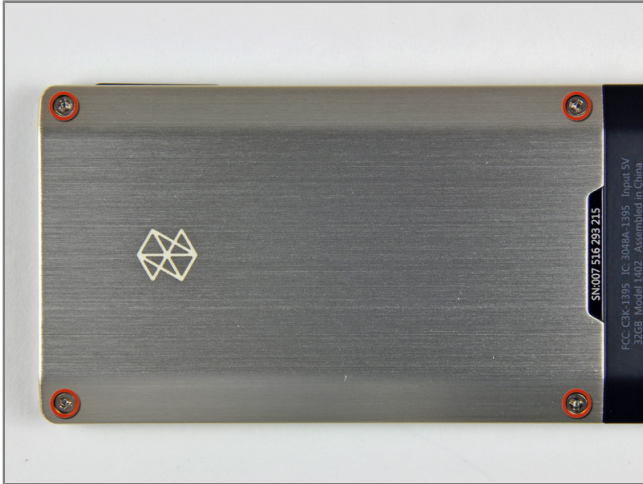




## Installing Microsoft Zune HD Controls Sidebar

### Tools used in this guide

- [Plastic Opening Tools](#)
- [Tri-wing Screwdriver](#)



## Step 1 - Upper Rear Panel

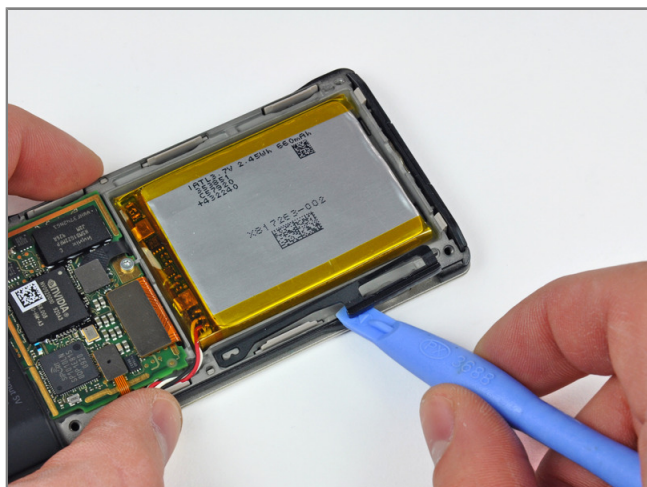
- Remove the four Tri-Wing screws securing the upper rear panel to the inner chassis.



## Step 2

- Slightly rotate the top edge of the upper rear panel away from the Zune.
- Lift the upper rear panel straight up off the black plastic lower rear panel.





### **Step 3 - Controls Sidebar**

- Use an iPod opening tool to gently lift the media button lever off the post cast into the inner chassis.
- Try not excessively rotate the media button lever about this post.

