



Installing Microsoft Zune 30 Battery and Hard Drive

This is a relative easy way to change your battery and hard drive on a Zune 30gb



Step 1 - Battery and Hard Drive

- Tools that are needed to replace the battery and the hard drive
- small Phillips screwdriver
- small jewelers flat head screwdriver
- case opening tool, I use my trusty Ipod opener :)
- definitely glasses if you are supposed to have them. Some of this stuff is really small.



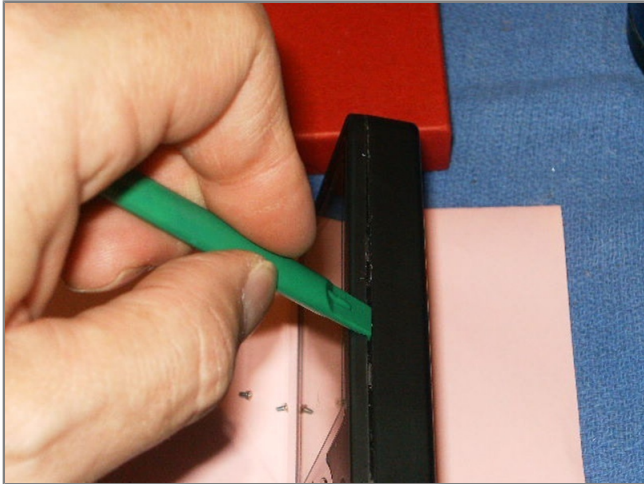
Step 2

- Start of by removing the spacer from the bottom dock port. It is just pushed in. so all you need is a small jewelers screwdriver and pry it out. Use the smaller ends of the port as pry point so you wont break the spacer.



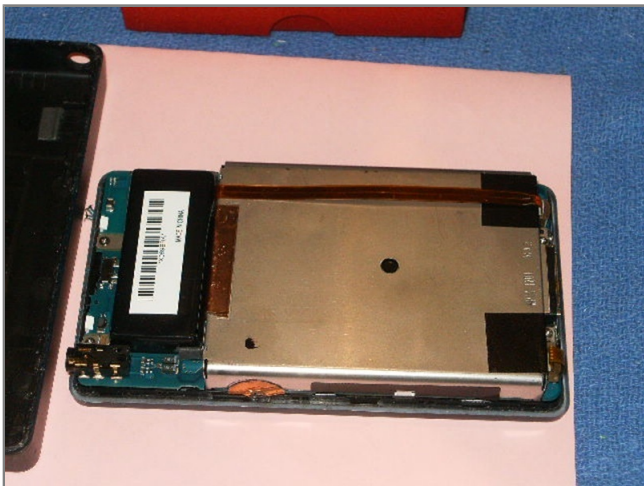
Step 3

- Next remove the two small Phillips screws.



Step 4

- Now it is time to open the case. I used my trusty Ipod opening tools and started on the longer side of the Zune. Just like the Ipod, take your time and carefully open the case. Sometimes it works better if you use two tools. Once it opens, be CAREFUL around the headphone jack when you lift up the case. Lift it slowly at the port end and then the headphone end. The headphone seems to extend a little into the case and you DO NOT want to break it off the board....



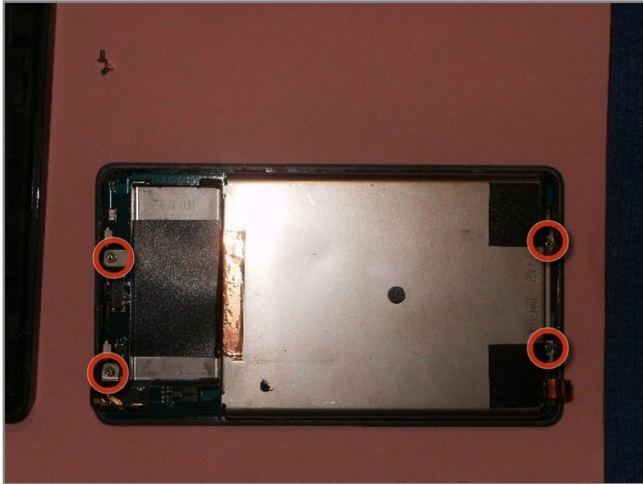
Step 5

- Now with the backing off we have free access to the battery and the hard drive caddy.



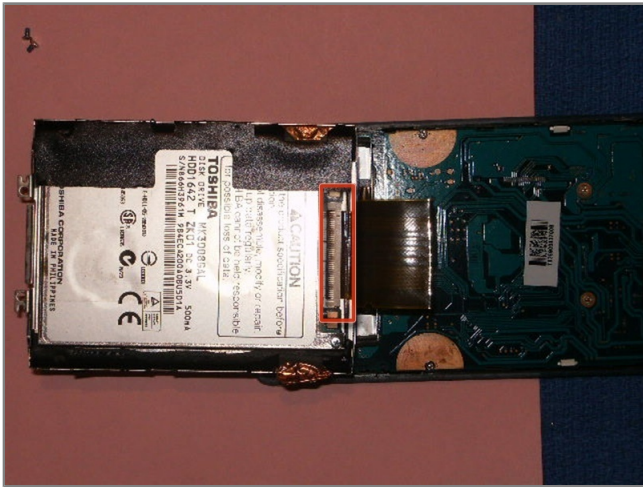
Step 6

- Disconnect the battery by lifting the brown slide gently up which will free the cable. You can now safely remove the battery. Now is also a good time to disconnect the clickwheel cable.



Step 7

- Now remove the 4 screws holding the drive case as well as the clip for the battery on the board .



Step 8

- With the battery and the 4 screws for for the hard drive caddy removed lift the caddy up and flip it toward the head phone end of the Zune. Remove the drive cable clip by opening the black clip on the connector. Use your fingernails or the Ipod tool to move the clip carefully to the opposite end of where it is now :) Take of the sticky tape and that reveals the hard drive bumpers. Remove those and that will free the hard drive. Now its time to replace the drive and reassemble the Zune.

To reassemble your device, follow these instructions in reverse order.

This document was last generated on Dec 14, 2010.