

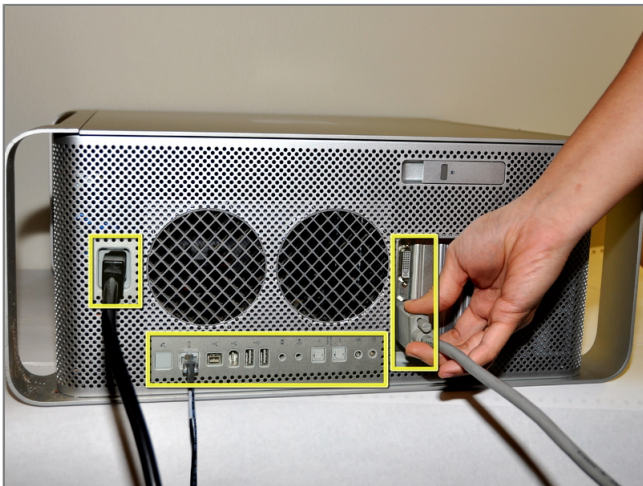


## Installing Power Mac G5 Power Supply



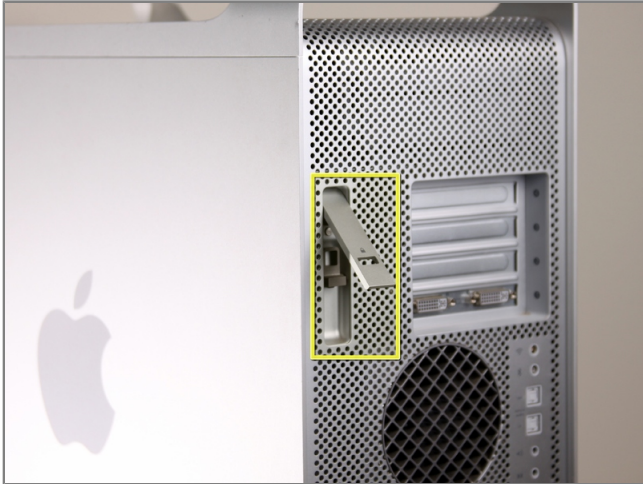
### Step 1 - disassembly Side Panel

- To avoid electrocution, shut down the computer. Do not open the computer or attempt to install any items inside it while the computer is on.
- To avoid being shocked wait at least 10 minutes to allow the computer's internal components to cool.



### Step 2

- Remove all the cables, including the power cables before opening the unit.



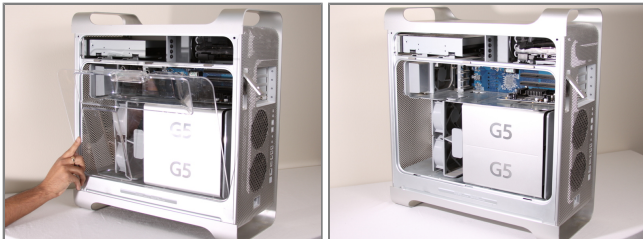
## Step 3

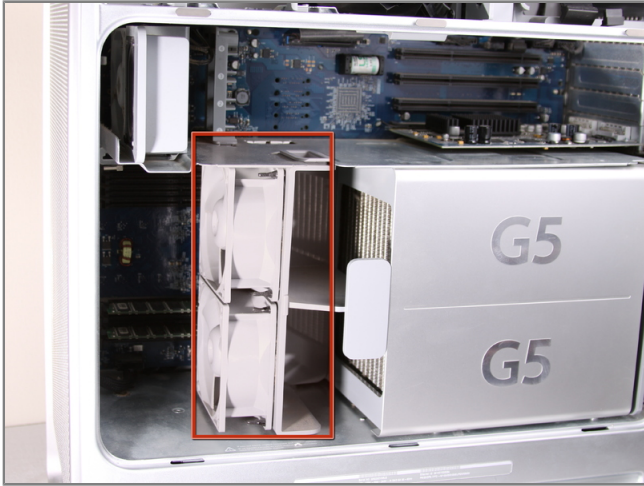
- Lift the tab to unlock the side panel.
- The panel should fall out. If the panel does not fall out by itself pull a little from the edges.



## Step 4

- Remove the air deflector (the clear plastic cover) by pulling on the handle.





### Step 5 - Front Fan Assembly

- Locate the front fan assembly.



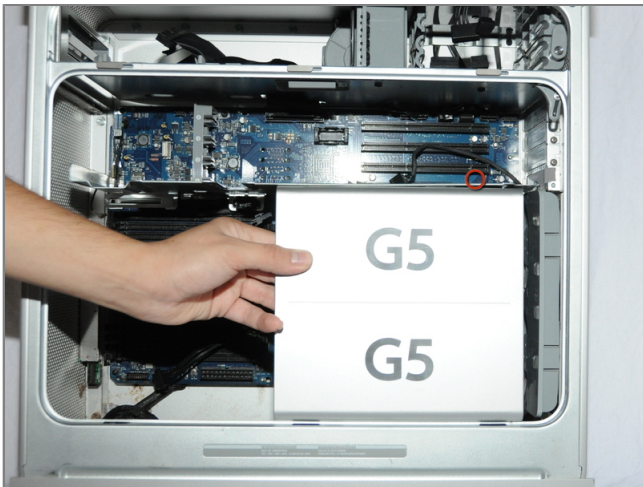
### Step 6

- Pull the fan assembly out; it should slide out easily.



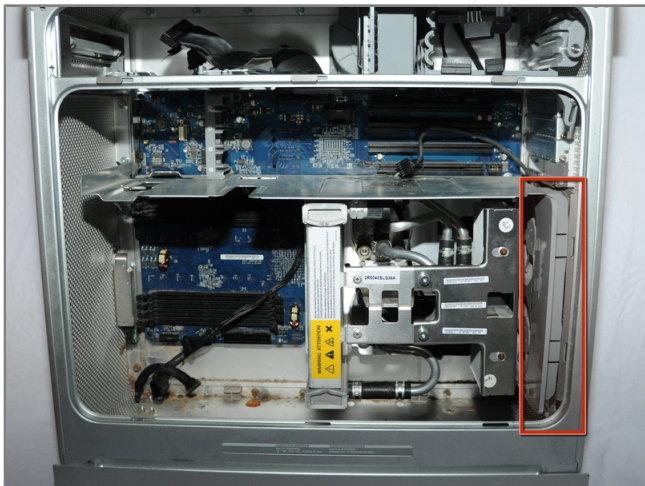
### Step 7 - Bottom Right Cooling Fan Unit

- The cooling fan unit is located on the bottom right of the Apple G5 Desktop.



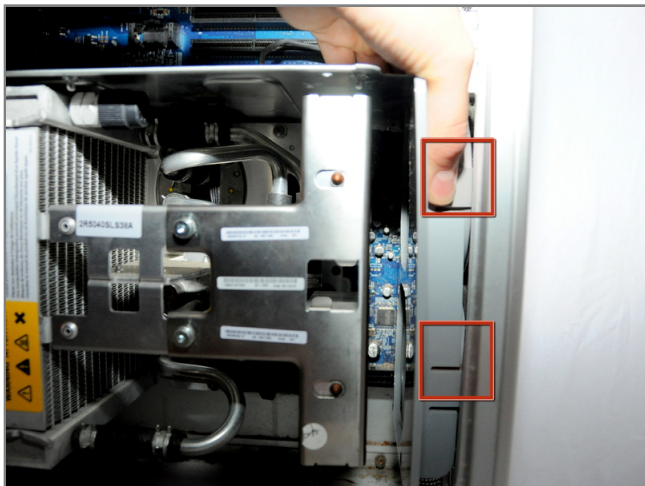
### Step 8

- Remove the G5 metal cover from the processing/cooling unit of the computer. NOTE: Apple inserted a rather fragile plastic pin that inserts through the top divider shield and clips into a tab on the hidden ledge of this CPU shield. Removing this pin, certainly voids Mac's warranty - but more appropriate for now, voids most after-market insurance plans. A replacement pin (new) is hard to get ahold of, and very few are talented and patient enough to remove this pin without damaging it. Just something to keep in mind. If you have no warranty any longer or don't care, please continue...
- Pull the metal plate to the left and outward to remove the plate from the processing/cooling unit.



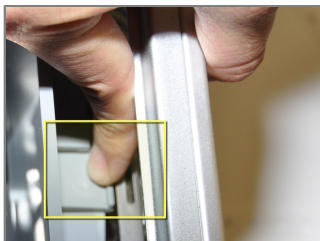
### Step 9

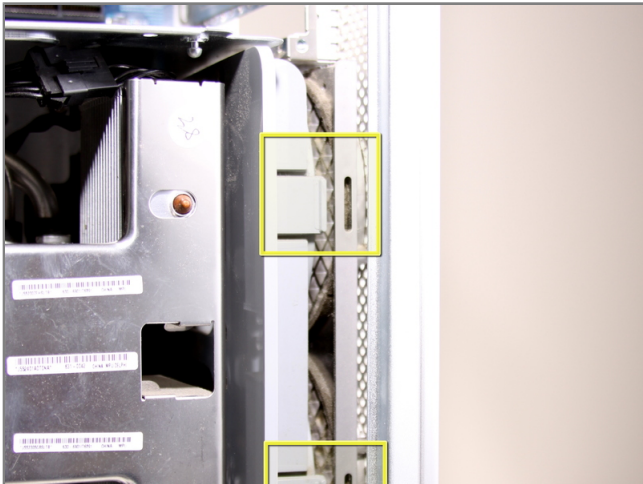
- Locate the bottom right fan.



### Step 10

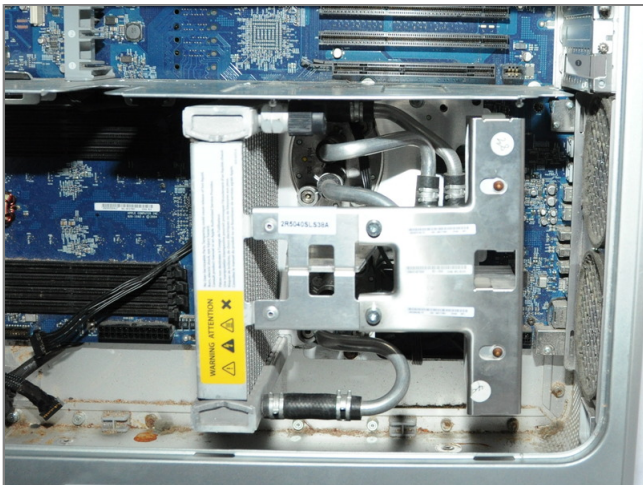
- Locate the tabs on the fan unit.
- While pushing in on the tabs, highlighted in yellow, pull the fan back towards the cooling unit.





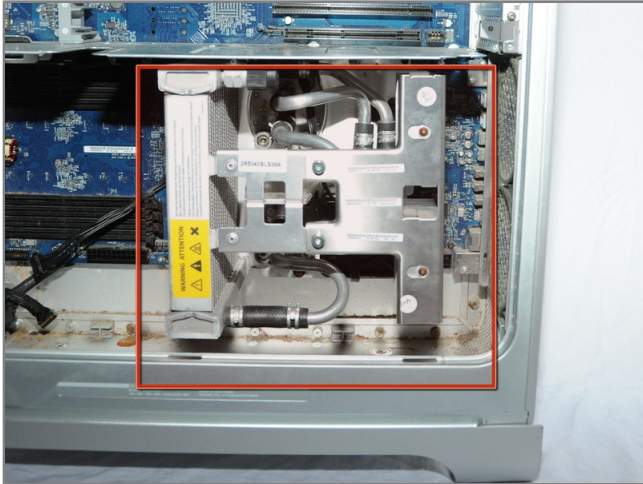
## Step 11

- After the latches are out, pull the fan out.



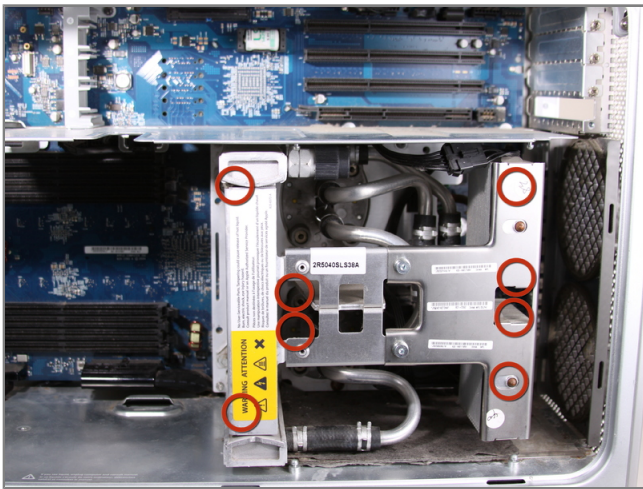
## Step 12

- After removal of the bottom right fan the space should look like this.



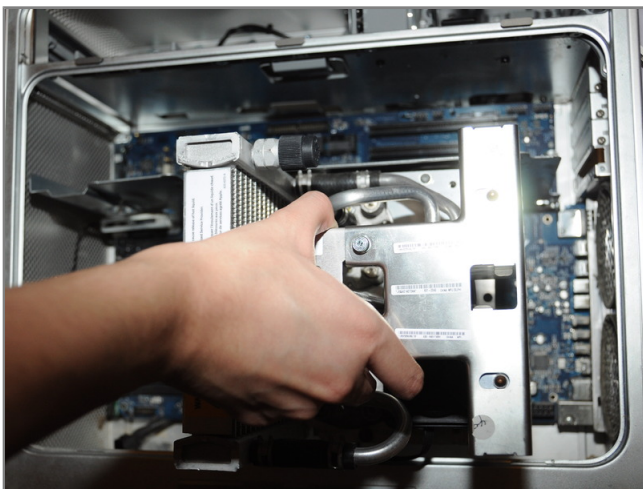
### Step 13 - Processor and Cooling Unit

- Locate the Cooling Unit on the Apple G5.



### Step 14

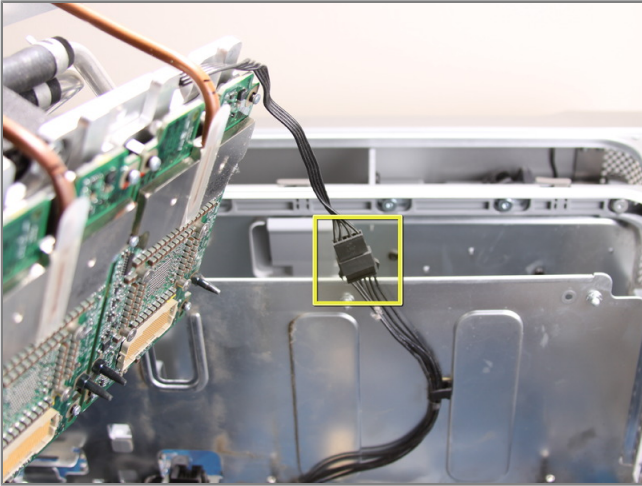
- Unscrew 8 T10 screws from the cooling unit
- The screws are somewhat hidden, so they cannot be seen in the picture.
- To visualize the location of the screws look 3 steps ahead.
- The screws will loosen but will not come out, they are designed to loosen the unit, but remain in place.



### Step 15

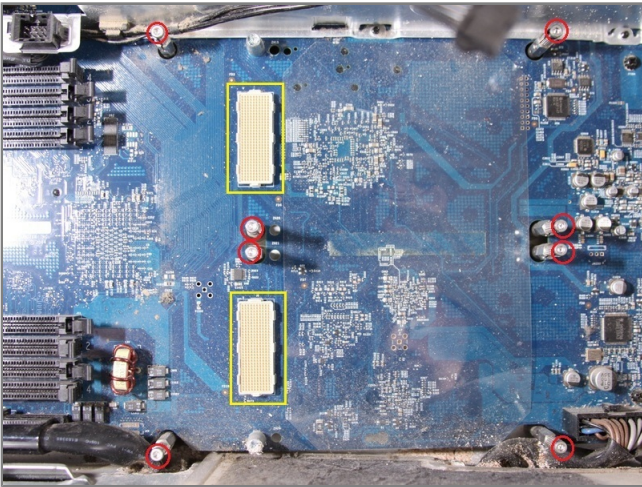
- Pull the cooling/processing unit straight up to prevent damage to logic board
- This will require some effort and should be done with caution to avoid damage.





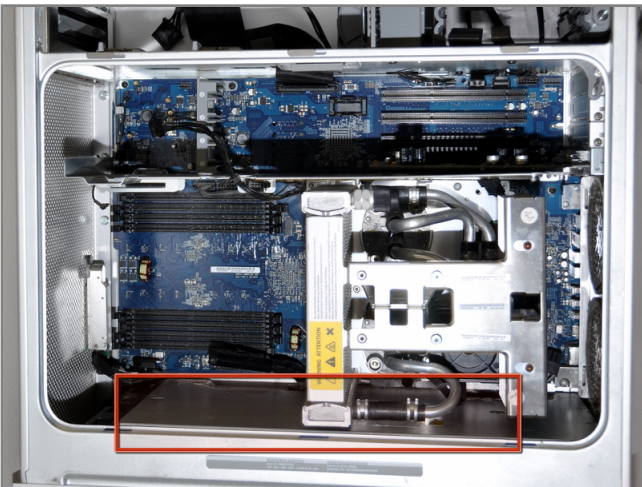
## Step 16

- Disconnect the cable.



## Step 17

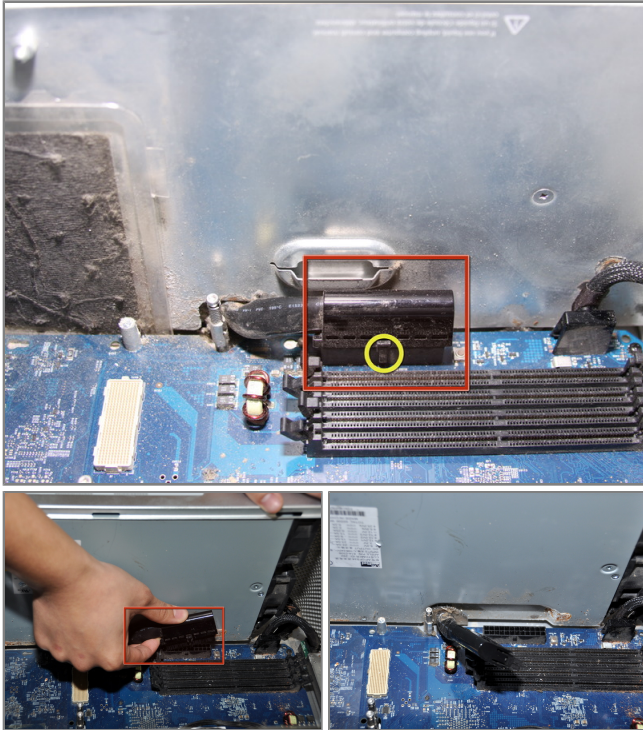
- NOTE: Here are the standoffs without the cooling unit installed to make it easier to understand where the screws are located. Remove the bottom 2 standoffs so it is easier to remove the power supply.
- Check the pin connections for any damage. All the pins highlighted in yellow should appear straight up and not appear bent. DON'T TOUCH THE PINS. A bent pin will result in your computer not powering on.



## Step 18 - Power Supply

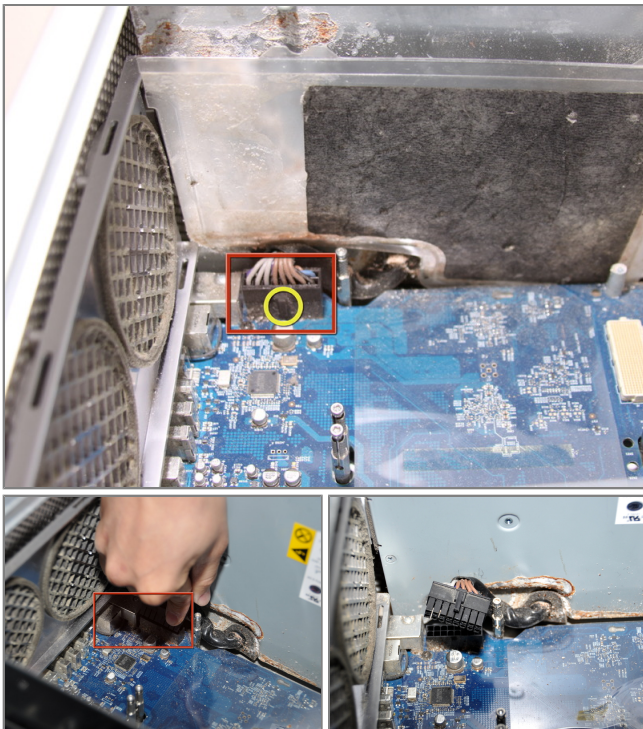
- Locate the power supply in the Apple G5 computer. It is located under the metal plate at the bottom of the computer case.





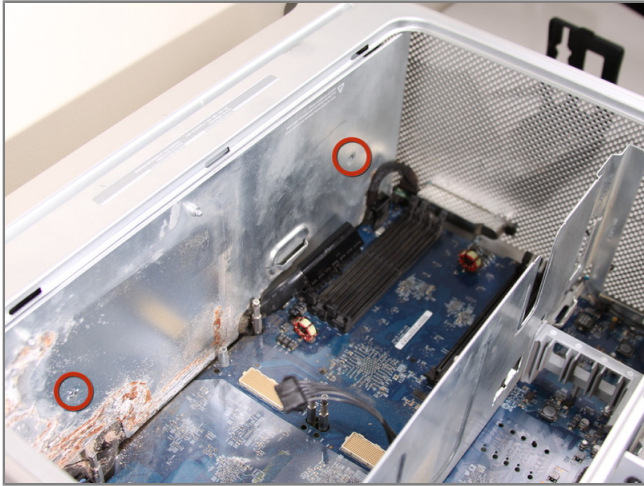
### Step 19

- Undo the clip shown by pulling up on the edge closest to the RAM slots.
- Unplug the black rectangular plug with a rounded top by pulling outwards.



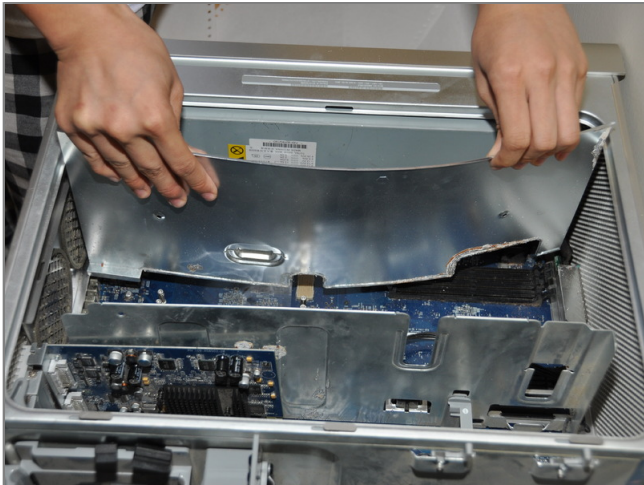
### Step 20

- Undo the clip shown by pulling up on the edge.
- Unplug the cord that is located below where the cooling unit was. To do this, pull outwards.



### Step 21

- Remove the 2 Philips screws holding the power supply cover on.



### Step 22

- Remove the power supply cover.
- This will require some bending, be sure not to bend the metal too much to prevent damage to the metal
- Pull the metal cover up slightly and out of the computer to prevent damage to the logic board.





## Step 23

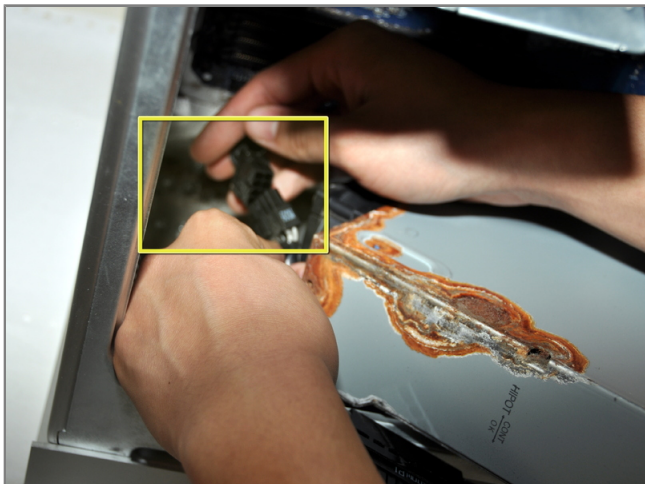
- Remove the 4 Philips screws on the underside of the computer case.



## Step 24

- Carefully pull the power supply out of the case.
- Do not completely remove the power supply since it is still attached to a cable.





## Step 25

- Unplug the final cable attached to the power supply from the computer.
- Now the power supply should come out of the computer freely.



## Step 26

- The bottom of the computer should look like this when removal of the power supply is complete.

To reassemble your device, follow these instructions in reverse order.