



Installing Power Mac G5 Graphics Card

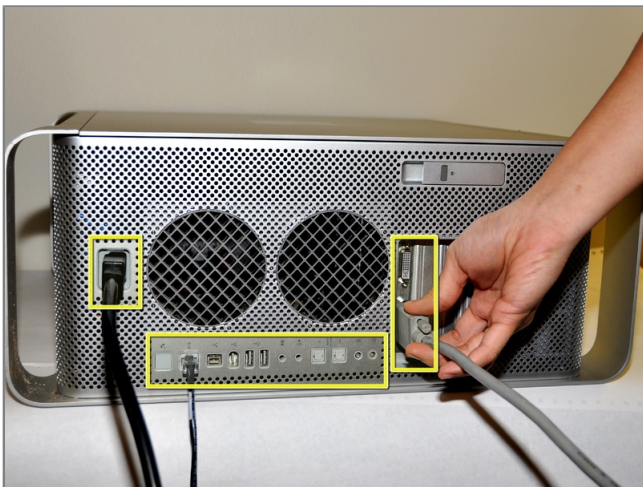
Tools used in this guide

- [Phillips #1 Screwdriver](#)



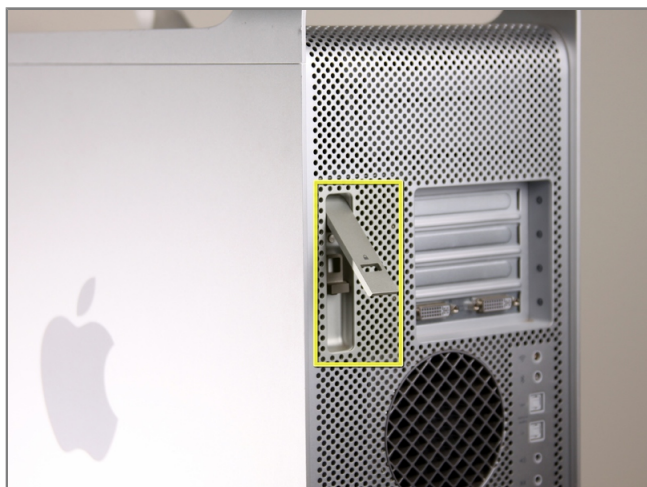
Step 1 - disassembly Side Panel

- To avoid electrocution, shut down the computer. Do not open the computer or attempt to install any items inside it while the computer is on.
- To avoid being shocked wait at least 10 minutes to allow the computer's internal components to cool.



Step 2

- Remove all the cables, including the power cables before opening the unit.



Step 3

- Lift the tab to unlock the side panel.
- The panel should fall out. If the panel does not fall out by itself pull a little from the edges.



Step 4

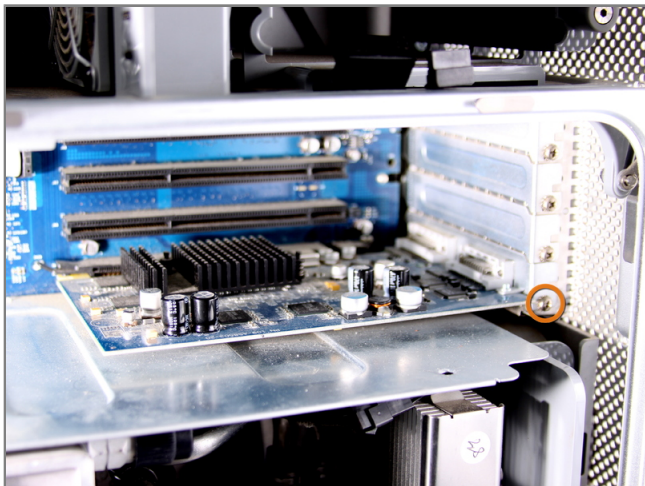
- Remove the air deflector (the clear plastic cover) by pulling on the handle.





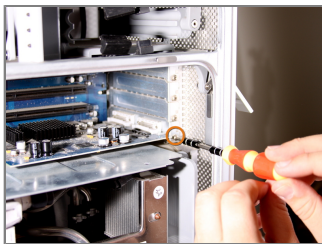
Step 5 - Graphics Card

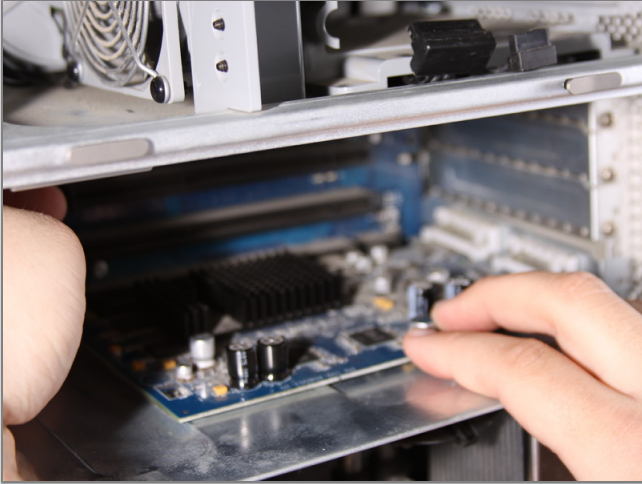
- Locate the graphics card in the desktop.



Step 6

- Using a Phillips # 1 screw driver, unscrew the screw right next to the graphics card.





Step 7

- Last thing to do is to gently shake the card out of its slot by pulling it straight out.