

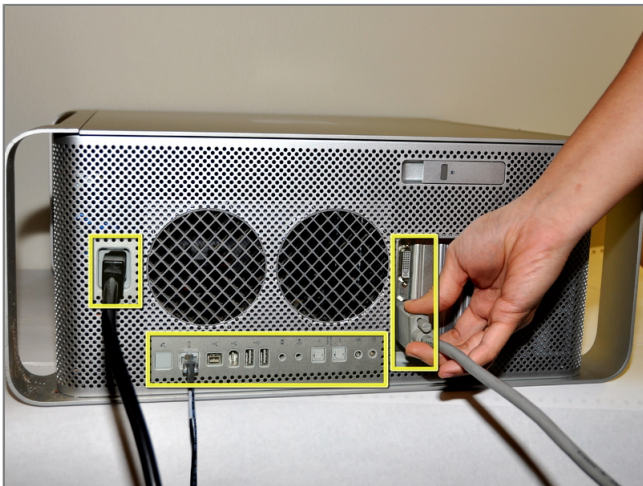


Installing Power Mac G5 CD-ROM Drive



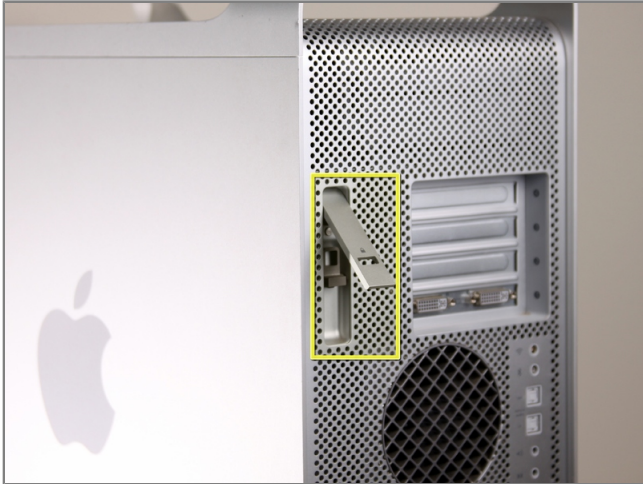
Step 1 - disassembly Side Panel

- To avoid electrocution, shut down the computer. Do not open the computer or attempt to install any items inside it while the computer is on.
- To avoid being shocked wait at least 10 minutes to allow the computer's internal components to cool.



Step 2

- Remove all the cables, including the power cables before opening the unit.



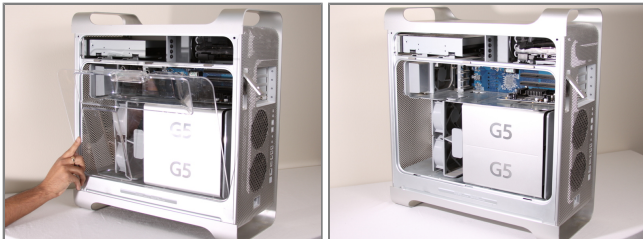
Step 3

- Lift the tab to unlock the side panel.
- The panel should fall out. If the panel does not fall out by itself pull a little from the edges.



Step 4

- Remove the air deflector (the clear plastic cover) by pulling on the handle.





Step 5 - CD-ROM Drive

- Locate the CD-ROM Drive on the top left corner of desktop.



Step 6

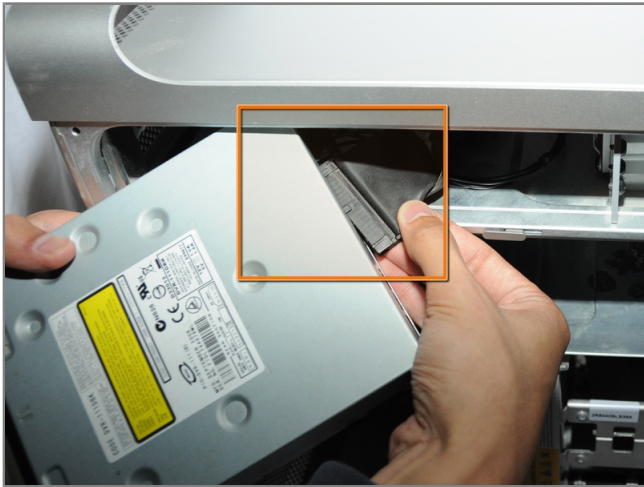
- Pull and rotate latches to the left.





Step 7

- Wiggle and pull out the CD Drive.



Step 8

- Detach the first cable from the CD-ROM drive.
- Detach the second cable from the CD-ROM drive.





Step 9

- After the CD-ROM drive is removed, the area should look like this.