

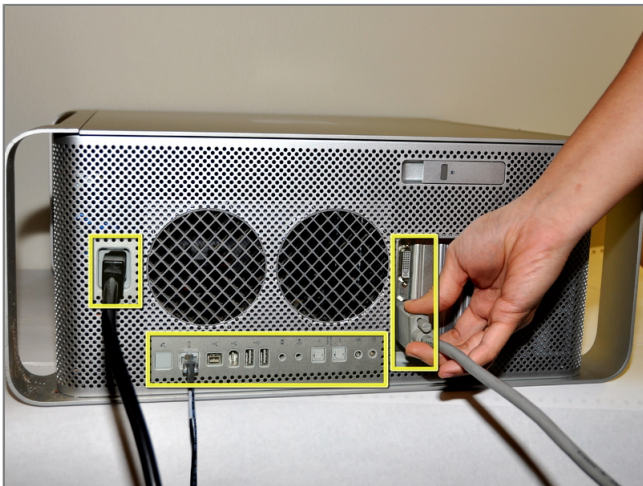


Installing Power Mac G5 Backup Battery



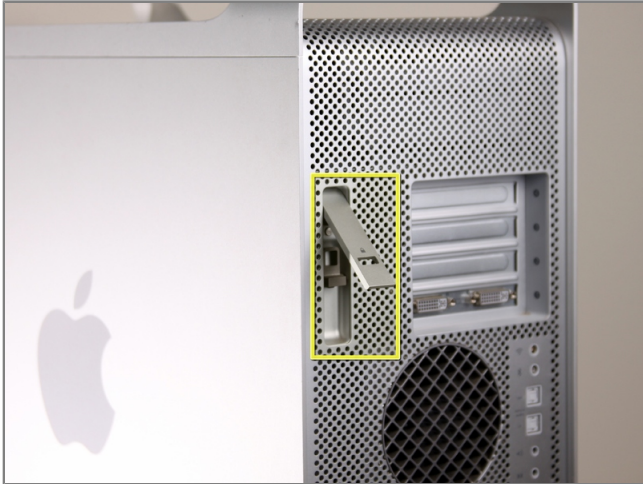
Step 1 - disassembly Side Panel

- To avoid electrocution, shut down the computer. Do not open the computer or attempt to install any items inside it while the computer is on.
- To avoid being shocked wait at least 10 minutes to allow the computer's internal components to cool.



Step 2

- Remove all the cables, including the power cables before opening the unit.



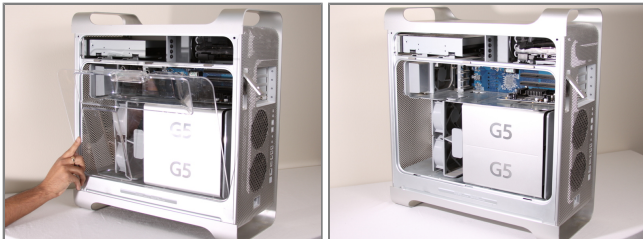
Step 3

- Lift the tab to unlock the side panel.
- The panel should fall out. If the panel does not fall out by itself pull a little from the edges.



Step 4

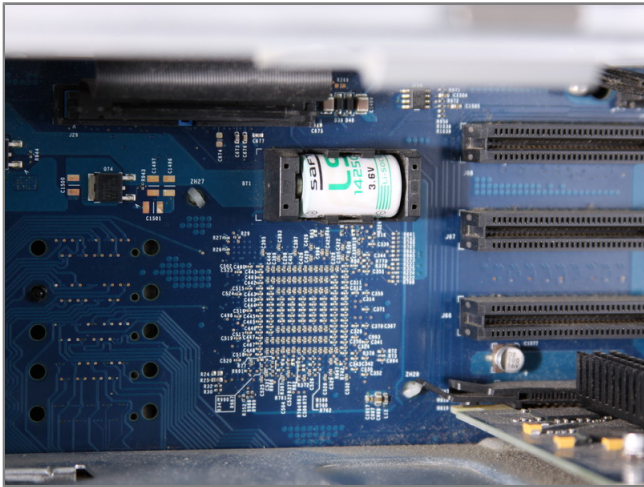
- Remove the air deflector (the clear plastic cover) by pulling on the handle.





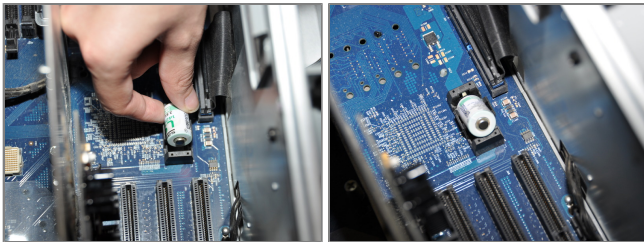
Step 5 - Backup Battery

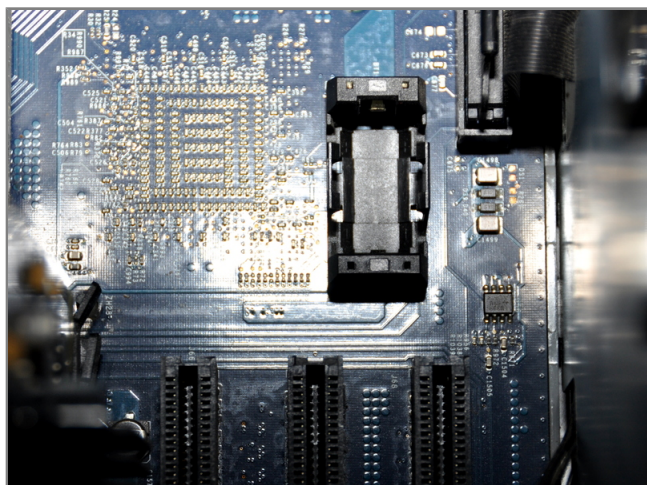
- Locate the battery inside the desktop.



Step 6

- Remove the battery by lifting the battery from the battery terminal.
- It is important to lift the battery as straight up as possible to avoid damage to battery or terminal.





Step 7

- The area should look like this after the battery is removed.
- Be sure to properly dispose of the old battery after removal (take it to the nearest hazardous waste center).
- Only insert LS1425OC 3.6V battery to prevent damage to the logic board.

