



# Repairing Power Mac G4 Quicksilver Central Processing Unit

## Tools used in this guide

- [Phillips #0 Screwdriver](#) (1)

Removing the CPU of the Power Mac G4 Quicksilver for replacement.



### **Step 1 - Opening the case**

- The handle to open your computer is located on top of the right side panel.



### **Step 2**

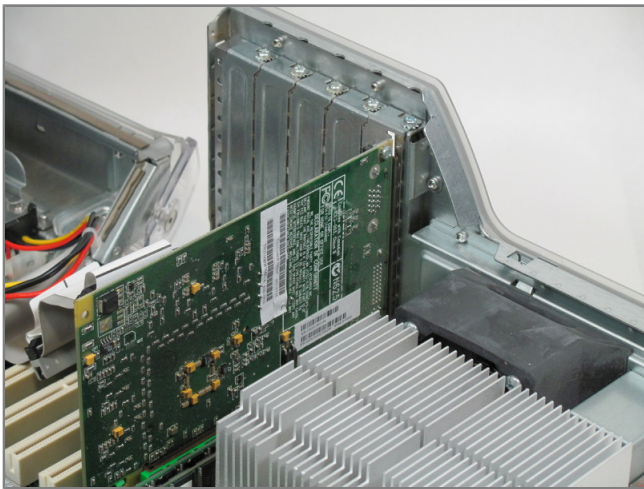
- Grab the circular handle and pull outward.





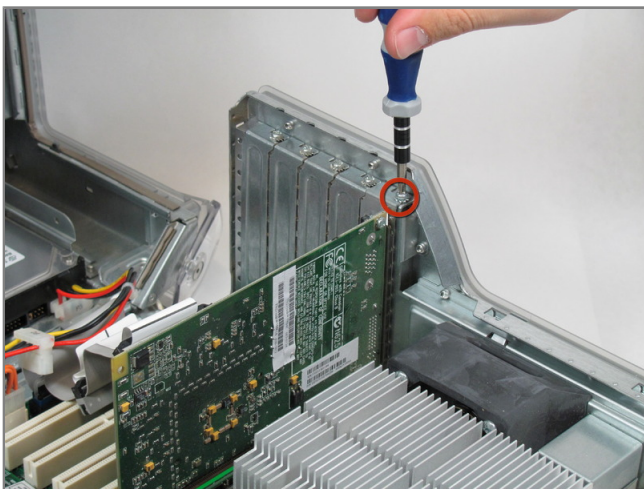
## Step 3

- Your computer is now open and ready for repair.



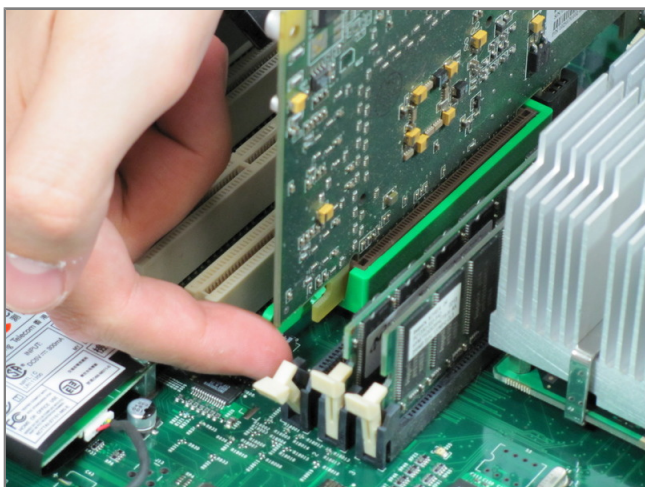
## Step 4 - Video Adapter

- This is your Power Mac G4's video adapter.



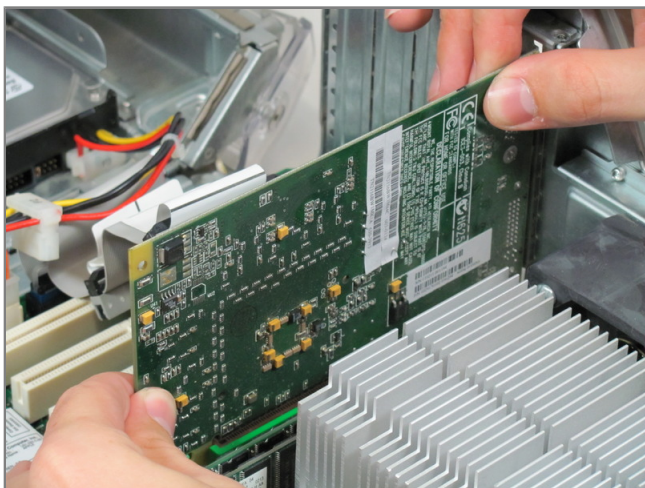
## Step 5

- Start by removing the screw holding the card to the chassis as shown.



## Step 6

- Before lifting the card out, this small plastic tab needs to be pulled back there by releasing it entirely.



## Step 7

- With the tab and screw removed, lift the card straight out.
- When putting the card back in, take care to apply even pressure across the top with your thumbs. This will avoid damaging the card.

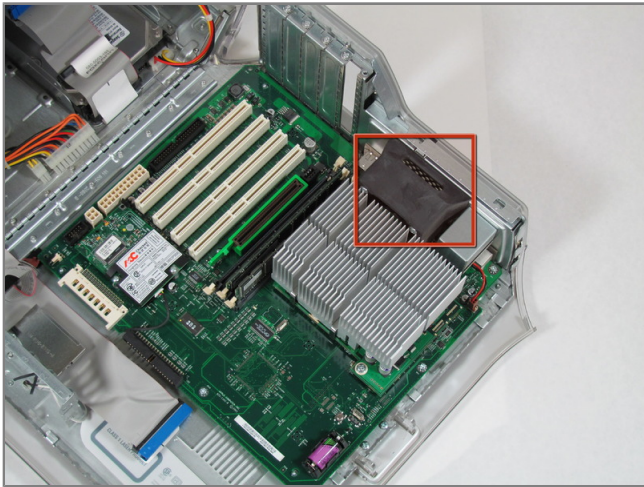






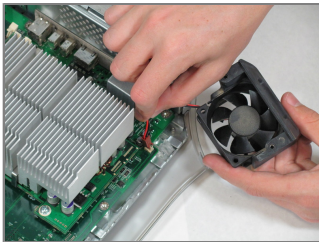
## Step 8 - Central Processing Unit

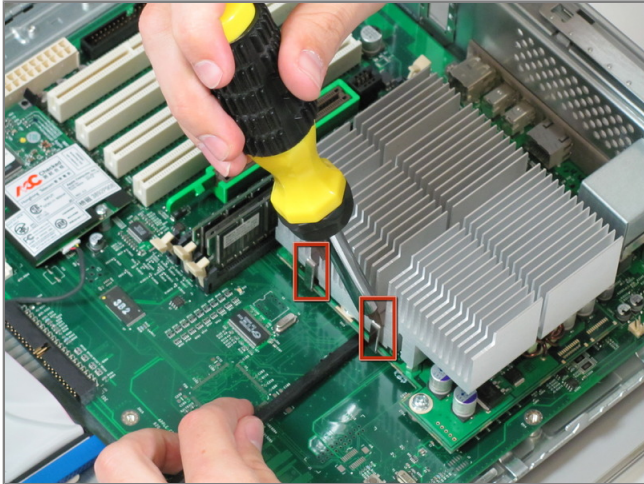
- First you want to remove the fan. Remove the two screws on the back of the computer in the upper left hand corner.



## Step 9

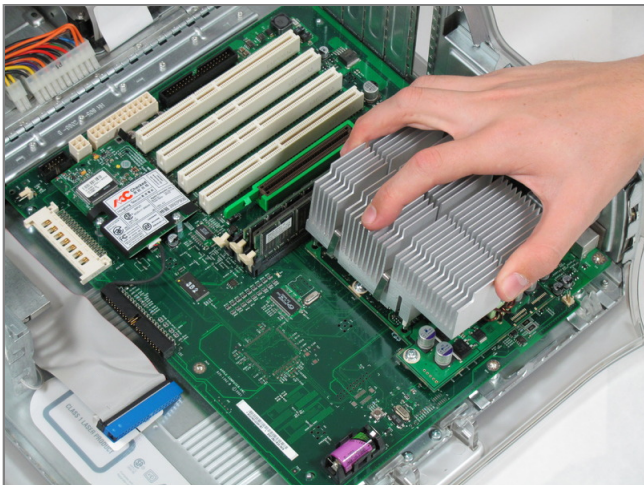
- Remove the fan unit by pulling straight up and out.
- Be careful not to rip out the cord still attached to the motherboard. Remove it gently.





### Step 10

- You need detach the heat sink from the CPU. Locate the four clamps holding it down, two on each side.
- Taking off the clamps can be difficult. Use a screwdriver to push down on the top of the clip. Then insert a spudger below the heat sink to pull it away from the board, releasing the heat sink.

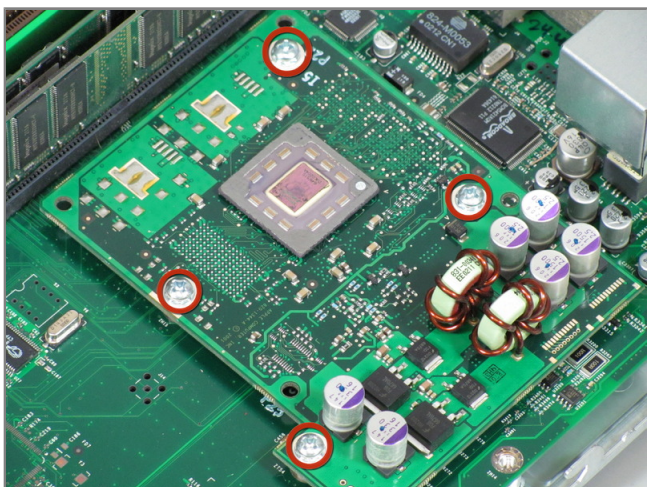


### Step 11

- Pull the heat sink up and off of the CPU.

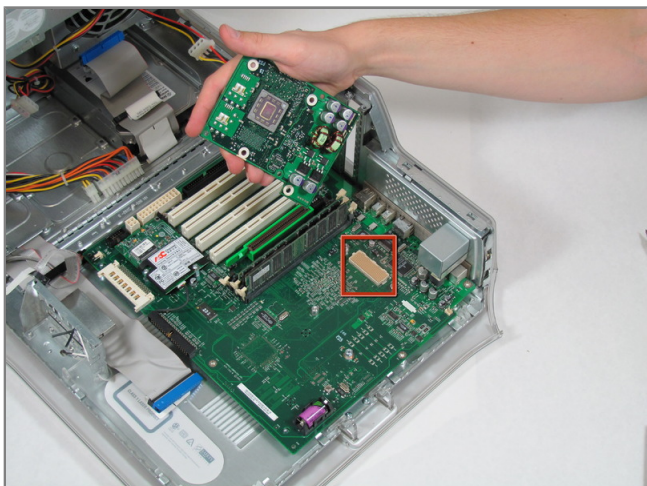






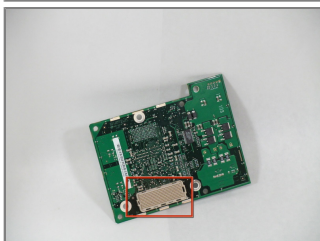
## Step 12

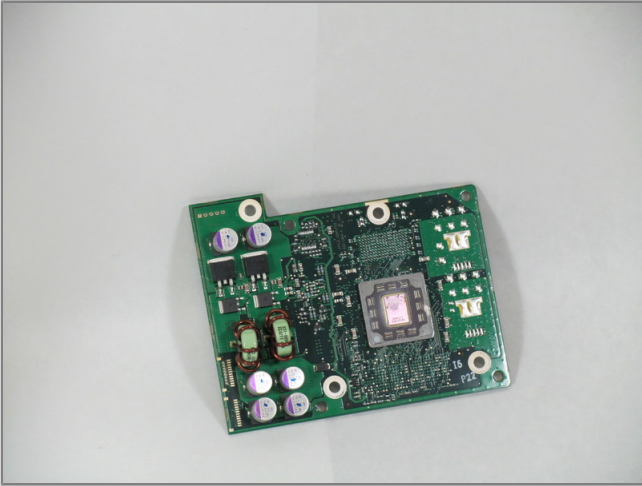
- Remove the four screws holding the CPU to the motherboard.



## Step 13

- Now you can remove the CPU by pulling it straight up from the motherboard.
- Be very careful when you detach the CPU. There is a connector that has hundreds of little prongs. You must not bend or break any of them! Be extremely careful.





### **Step 14**

- You can now replace the CPU.

To reassemble your device, follow these instructions in reverse order.

This document was last generated on Dec 14, 2010.