



## Installing Power Mac G4 MDD RAM

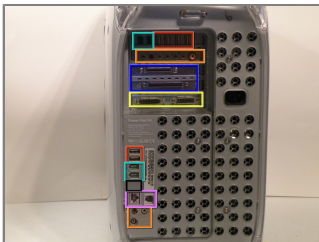
### Parts relevant to this guide

- [PC3200 512 MB RAM Chip \(Desktop\)](#)



### Step 1 - Case

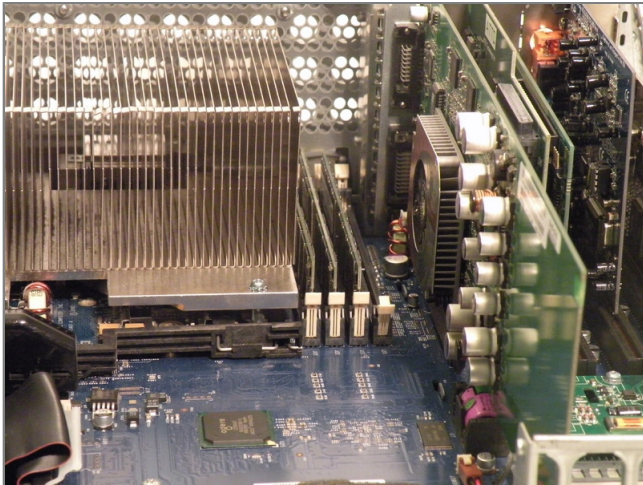
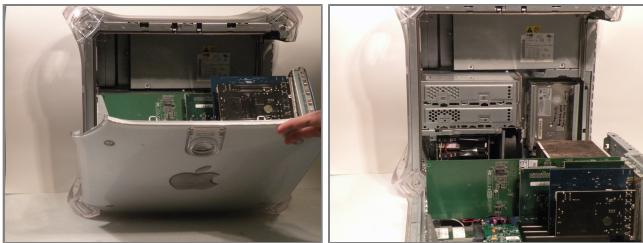
- The Power Mac G4 MDD: the last, and the fastest G4-based Mac. This computer boasted up to a Dual 1.42GHz PowerPC G4 CPU (though I have a single 1.25GHz).
- Six USB ports.
- Four FireWire ports.
- Assorted SCSI (SCSI50/SCSI68)
- Assorted Audio
- Video (ADC & DVI)
- ☒ Networking (RJ-45 Ethernet/56k Modem)
- Some later model MDD's (such as the dual 1.42GHz) Have a FireWire 800 Port Here:





### Step 2

- Pull on the side lever and lower the side of the case.



### Step 3 - RAM

- The ram is between the graphics card, and the CPU, and removal is simple. Push the tabs down on both sides, this will free the ram, then lift it out.
- The MDD Uses A Maximun of 2GB PC2700 DDR,(512MB X4) and had 4 slots for ram.

