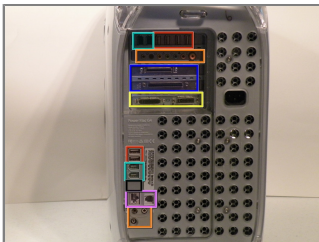




Installing Power Mac G4 MDD Hard Drives

Tools used in this guide

- [Phillips #0 Screwdriver](#)



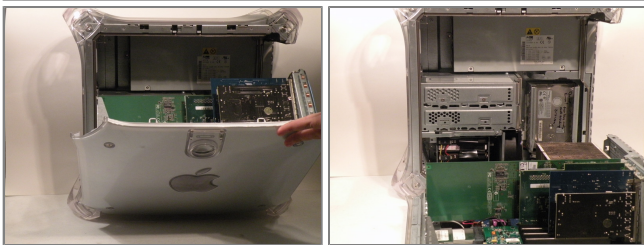
Step 1 - Case

- The Power Mac G4 MDD: the last, and the fastest G4-based Mac. This computer boasted up to a Dual 1.42GHz PowerPC G4 CPU (though I have a single 1.25GHz).
- Six USB ports.
- Four FireWire ports.
- Assorted SCSI (SCSI50/SCSI68)
- Assorted Audio
- Video (ADC & DVI)
- ☒ Networking (RJ-45 Ethernet/56k Modem)
- Some later model MDD's (such as the dual 1.42GHz) Have a FireWire 800 Port Here:



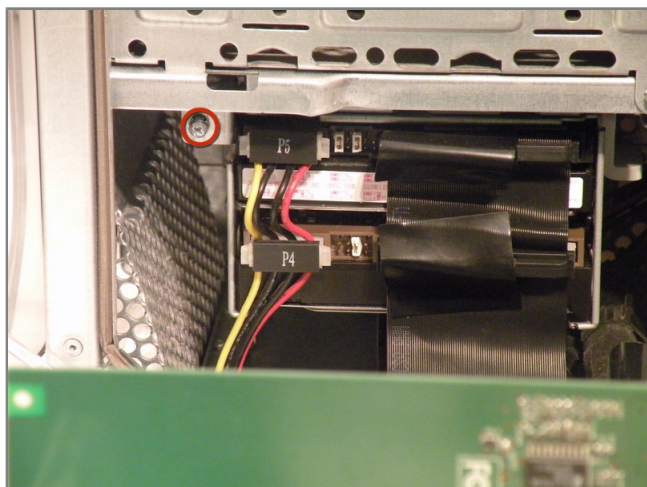
Step 2

- Pull on the side lever and lower the side of the case.



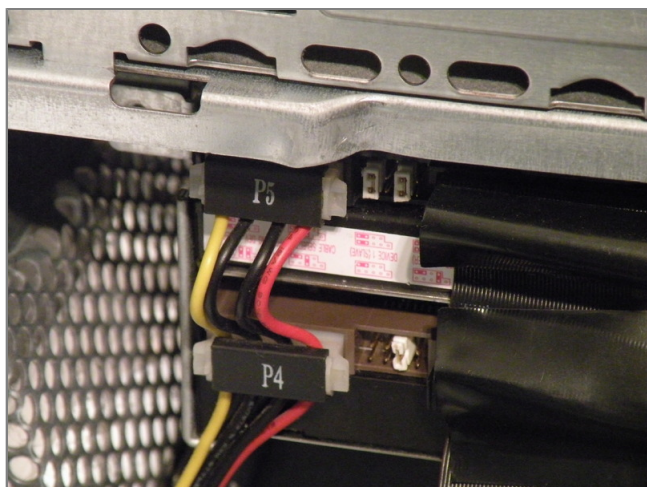
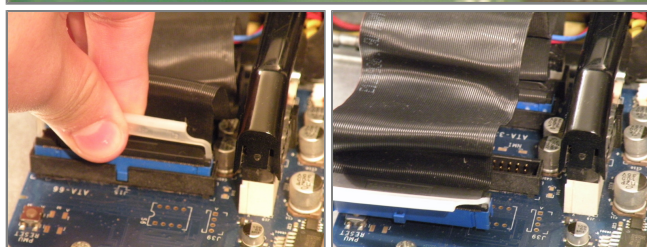
Step 3 - Hard Drives

- The hard drive cages are located here.



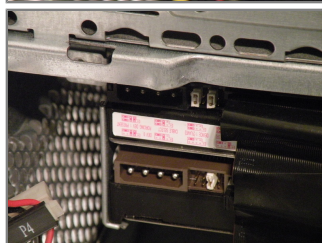
Step 4

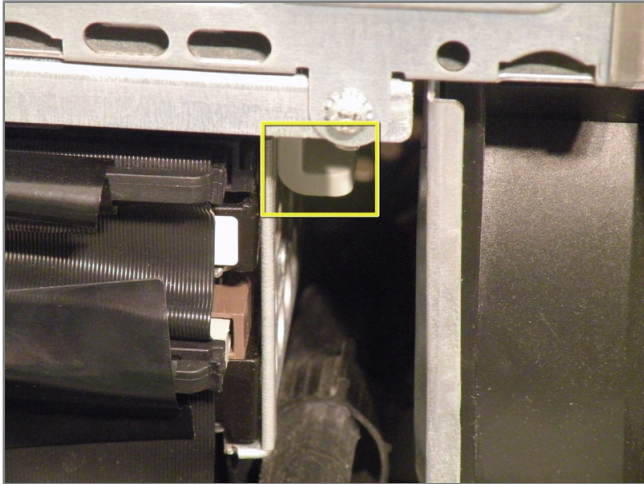
- Cage 1
- Start by removing this screw.
- Remove the IDE ribbon cable from the motherboard.



Step 5

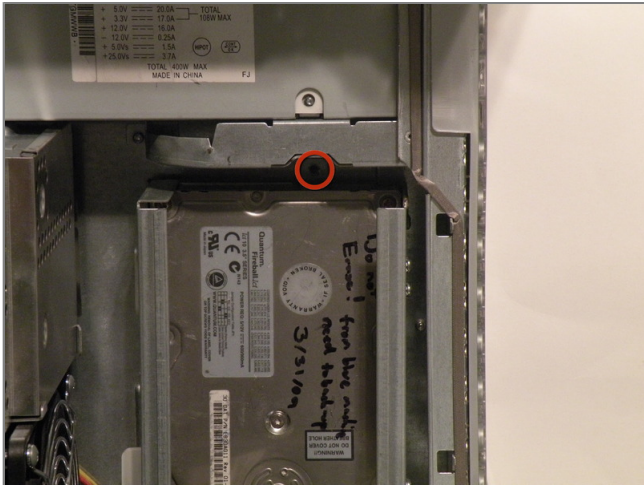
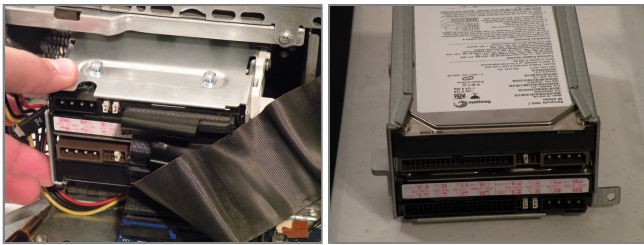
- Now, remove the power connecton from the drives.





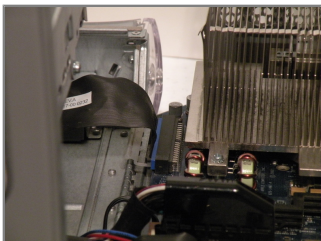
Step 6

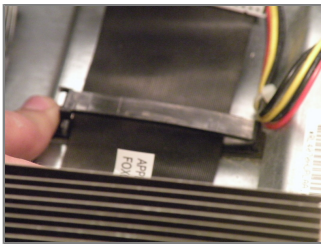
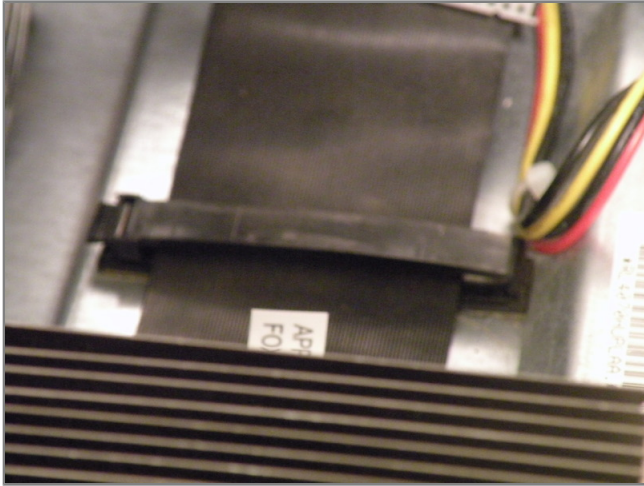
- Now, push this tab down, and pull the cage toward you.
- Now, you can set cage 1 aside.



Step 7

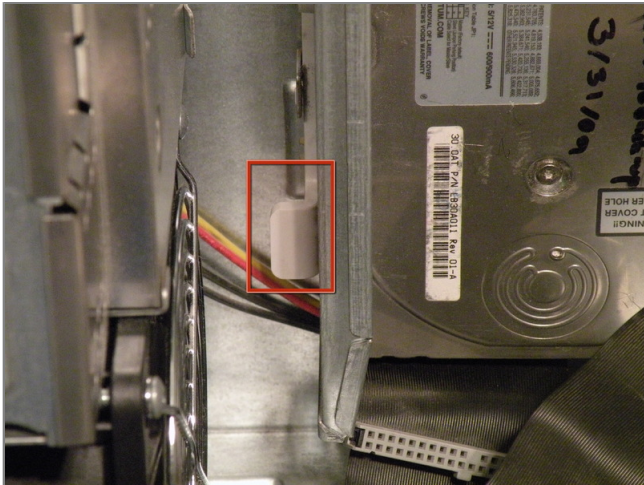
- Cage 2:
- Remove this Phillips screw:
- Disconnect this IDE ribbon cable from the logic board.





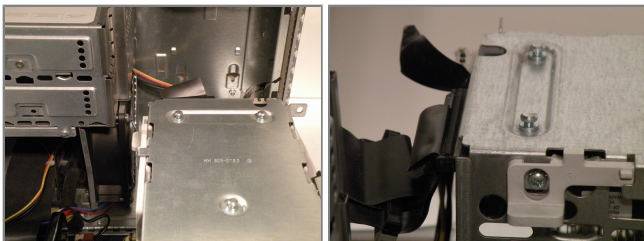
Step 8

- It's likely that there is a cable clip holding the ribbon cable to the case.
- To remove it, push the end, and it should pop up.



Step 9

- With the clip free, pull on this tab, lift the cage up, until it clicks, and pull it away.
- Now, set the cage on top of the CPU, and remove the power connectors.





Step 10

- Once the cables are free, set the drive cage aside.
- To remove the hard drives from the cages, remove the four screws on the sides of the cage that are connected to the drives, then slide the drives out.
- The two cages are cross compatible and can be put in either rack.
- The MDD does not have a 128GB drive limit like older macs, My MDD has 3 Drives (A 400GB Hitachi Deskstar, 40GB Seagate Baracuda 7200.7, and a 30GB Quantum Fireball LCT).