



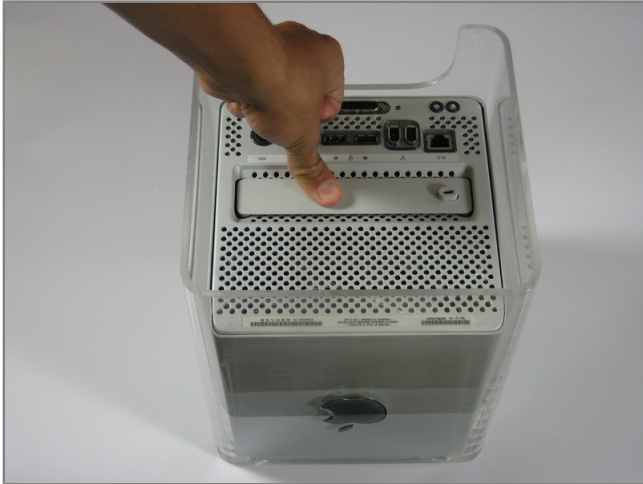
Installing Apple PowerMac G4 Cube RAM

Tools used in this guide

- [T10 Torx Screwdriver](#)

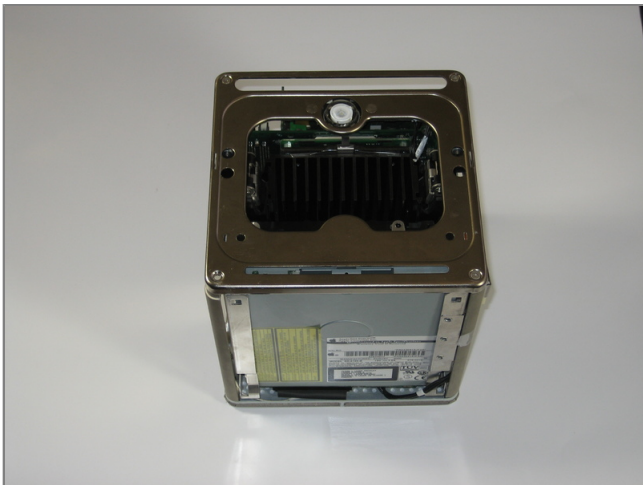
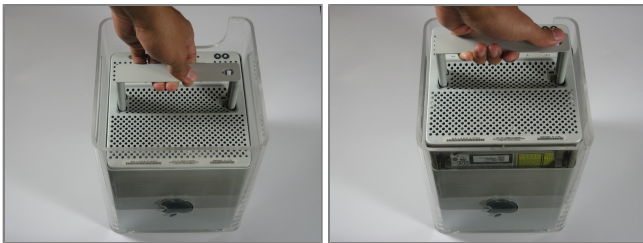
Parts relevant to this guide

- [PC100 128 MB RAM Chip](#)
- [PC100 64 MB RAM Chip](#)



Step 1 - disassembly Outer Case

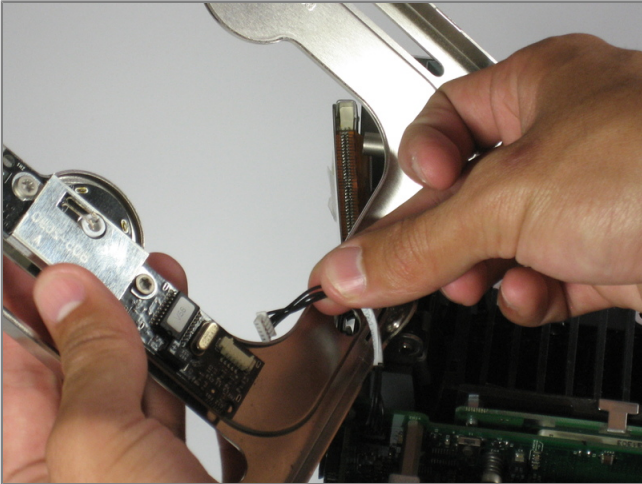
- Release the back handle of the PowerMac. Slowly pull out the cube by holding the end of the handle. Watch for any parts that may become entangled with the outercase.
- Push back the handle after you have taken the core out of the case.



Step 2

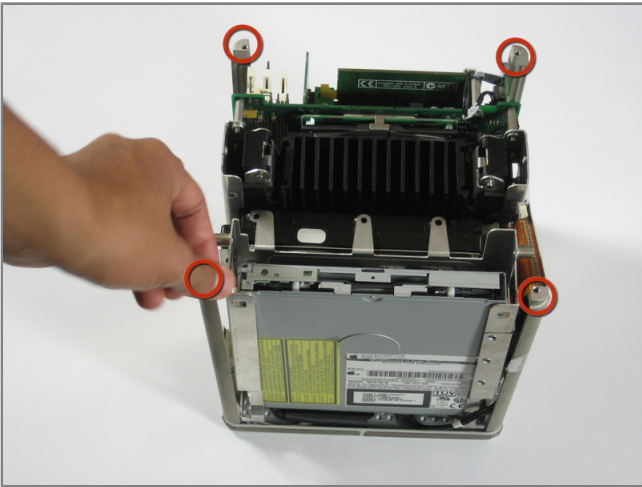
- Put the cube onto its backside and remove the four screws on the front plate. Then remove the two screws on each side.





Step 3

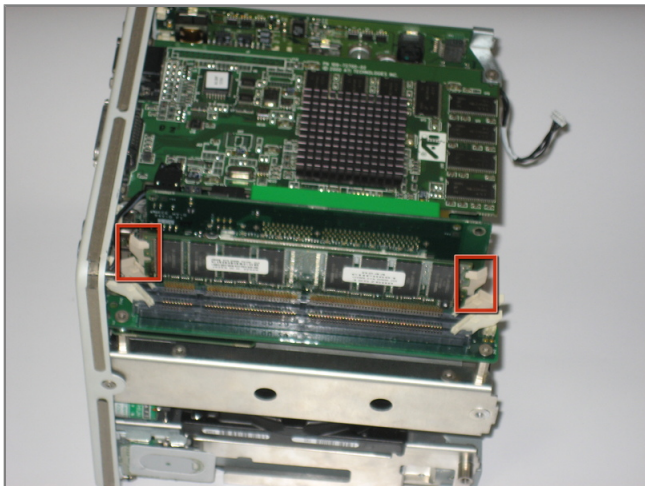
- Slowly lift the plate off the cube and disconnect the power cord.



Step 4

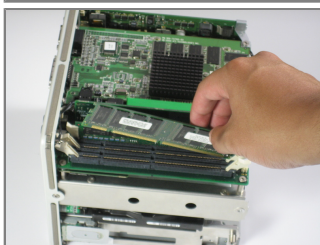
- Remove the four pillars from each corner.
- The pillars should come out easily.





Step 5 - RAM

- Flip the two latches on the side of the RAM chip.
- Remove the chip from the logic board and replace with new RAM.



To reassemble your device, follow these instructions in reverse order.