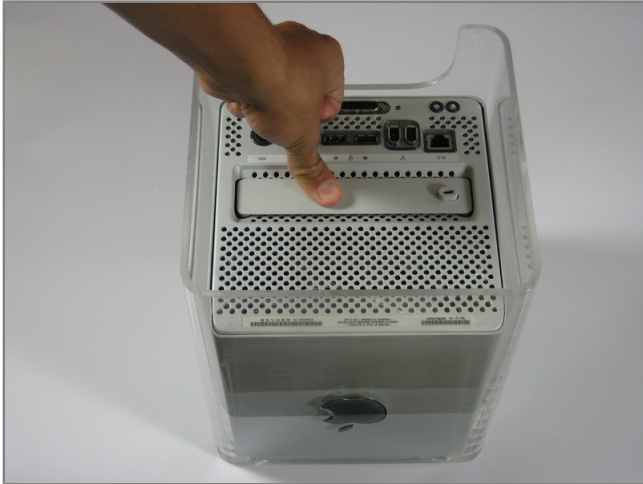




## Installing Apple PowerMac G4 Cube Modem

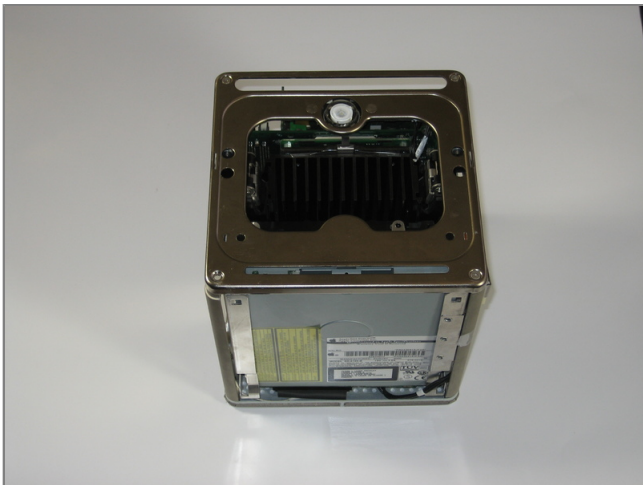
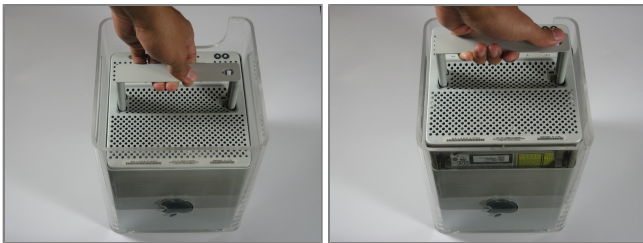
### Tools used in this guide

- [T10 Torx Screwdriver](#)



### Step 1 - disassembly Outer Case

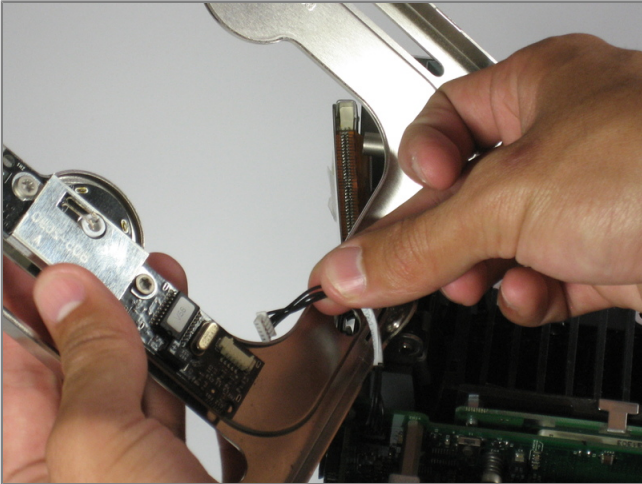
- Release the back handle of the PowerMac. Slowly pull out the cube by holding the end of the handle. Watch for any parts that may become entangled with the outercase.
- Push back the handle after you have taken the core out of the case.



### Step 2

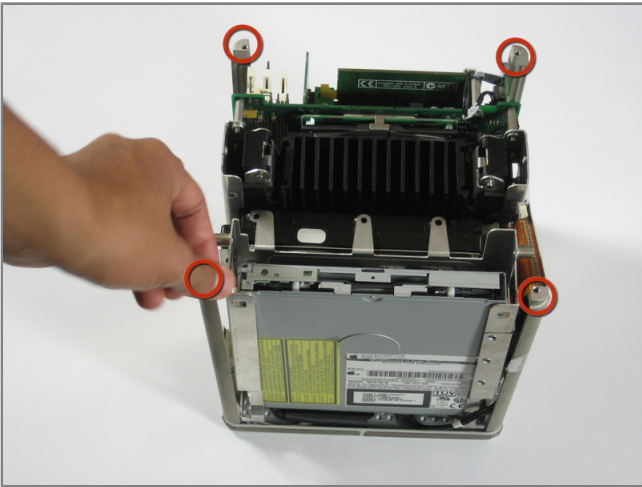
- Put the cube onto its backside and remove the four screws on the front plate. Then remove the two screws on each side.





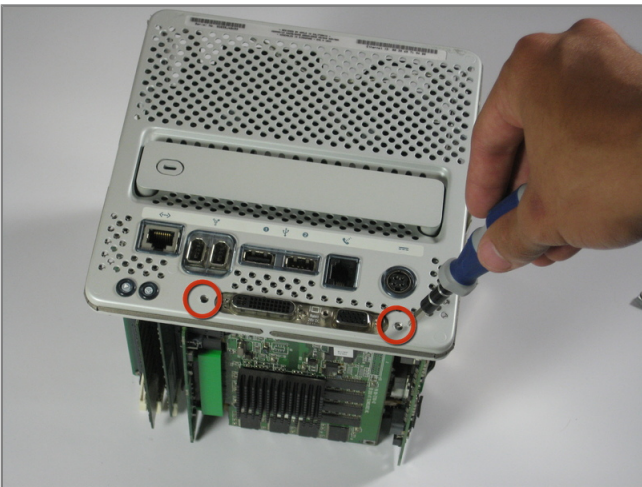
### Step 3

- Slowly lift the plate off the cube and disconnect the power cord.



### Step 4

- Remove the four pillars from each corner.
- The pillars should come out easily.



### Step 5 - Video Card

- Remove the screws on the back of the VGA port.



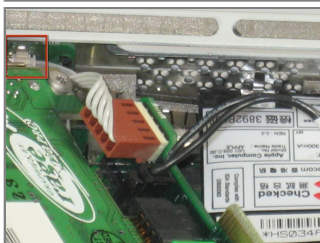
## Step 6

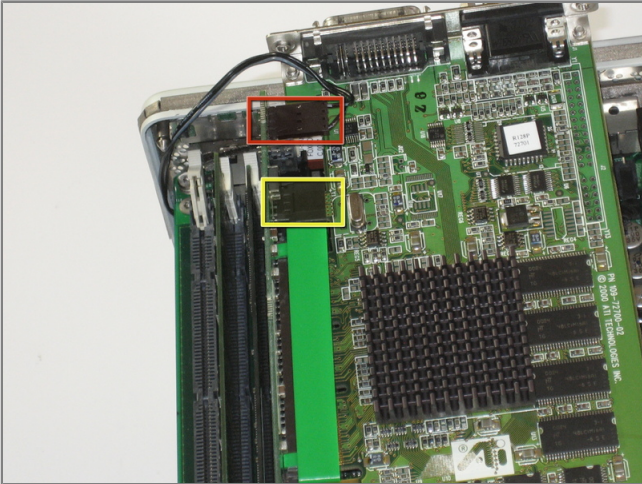
- Remove the screw attaching the video card to the logic board.



## Step 7

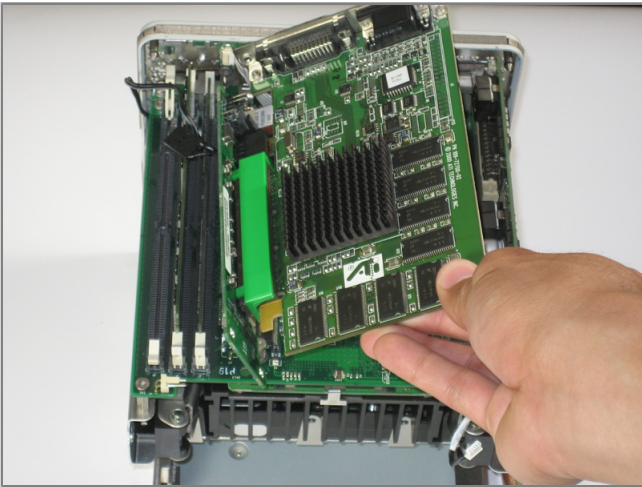
- Remove power cord from the video card.





### Step 8

- Remove the power cord.
- Remove the connector.
- Remove the video card from the logic board.



### Step 9

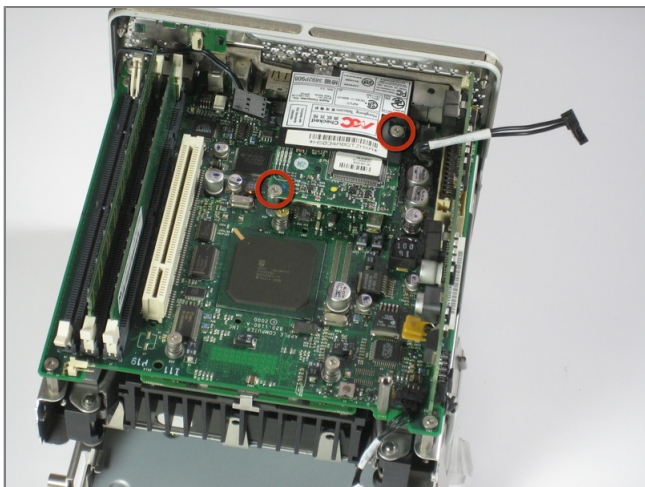
- Carefully lift the video card from the logic board.
- The video card should come out easily.





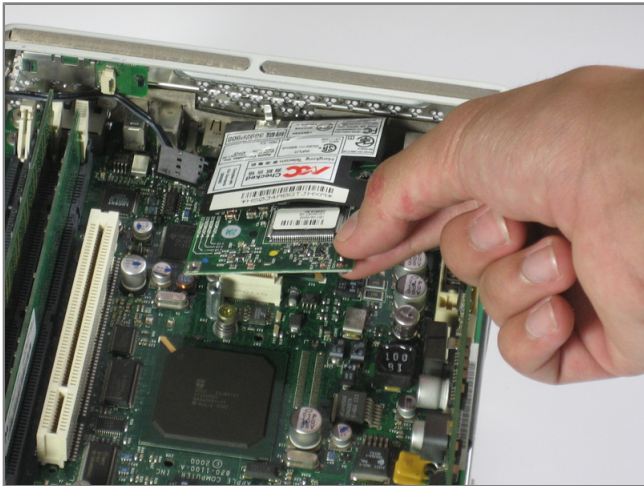
### Step 10

- Separate the video card from the adapter.



### Step 11 - Modem

- Remove the two screws from the modem.



## Step 12

- Lift modem from the Logic Board.
- The modem should come out easily.



To reassemble your device, follow these instructions in reverse order.