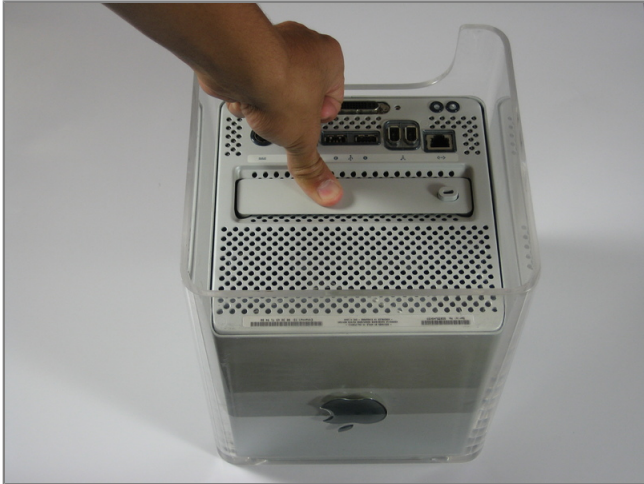




Installing Apple PowerMac G4 Cube Hard drive

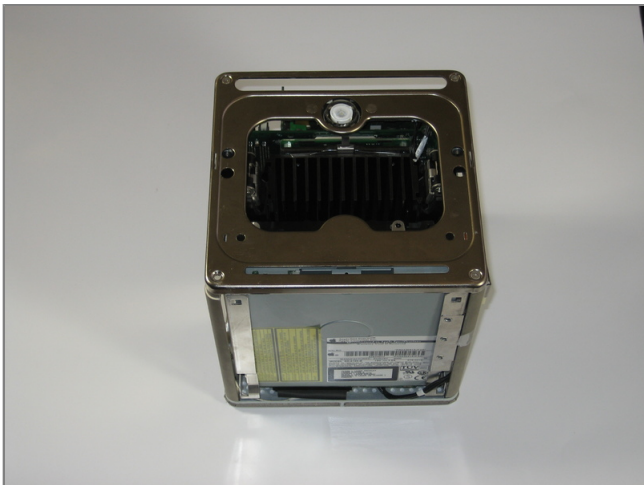
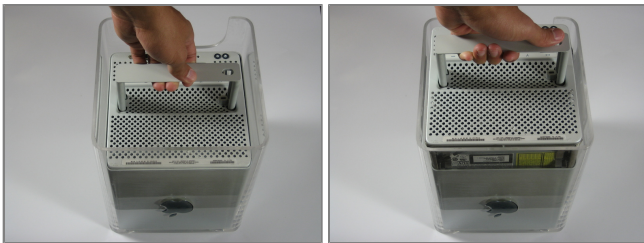
Tools used in this guide

- [T10 Torx Screwdriver](#)



Step 1 - disassembly Outer Case

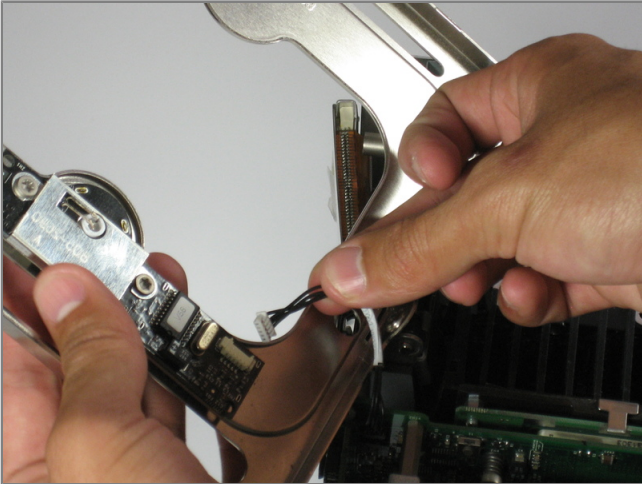
- Release the back handle of the PowerMac. Slowly pull out the cube by holding the end of the handle. Watch for any parts that may become entangled with the outercase.
- Push back the handle after you have taken the core out of the case.



Step 2

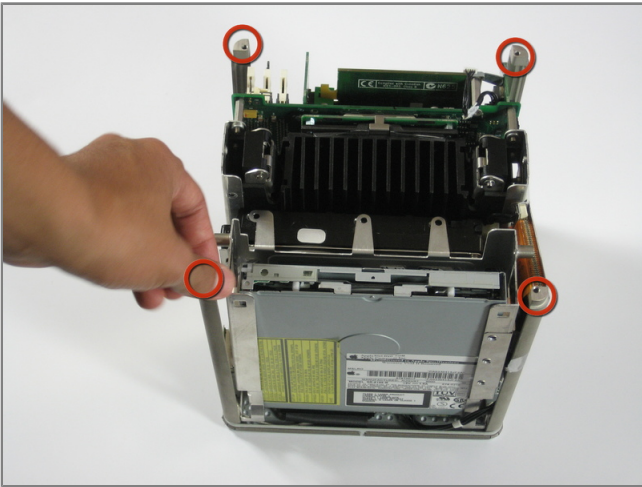
- Put the cube onto its backside and remove the four screws on the front plate. Then remove the two screws on each side.





Step 3

- Slowly lift the plate off the cube and disconnect the power cord.



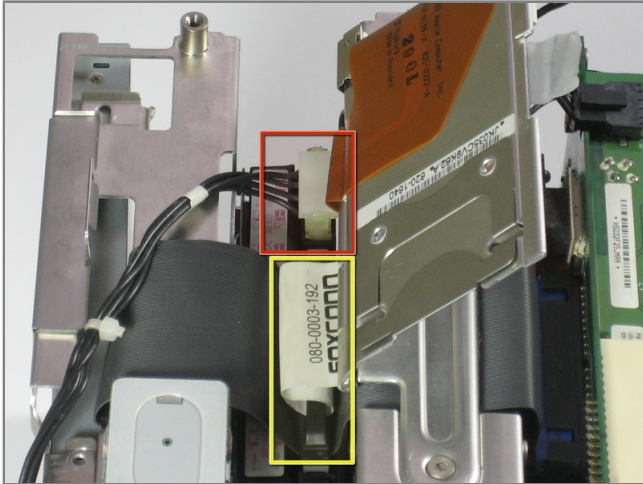
Step 4

- Remove the four pillars from each corner.
- The pillars should come out easily.



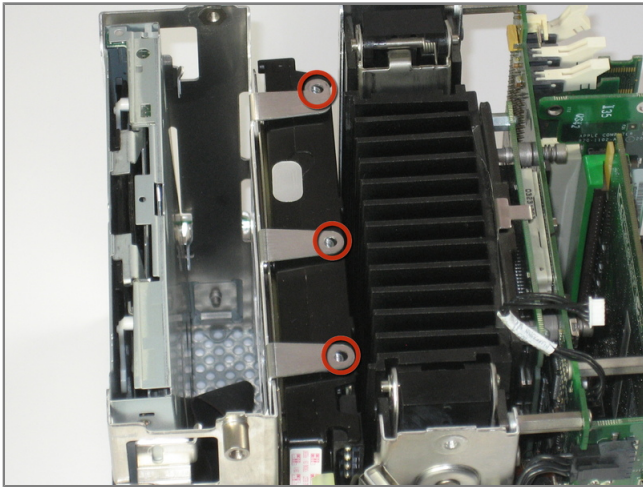
Step 5 - Hard drive

- Lift Airport slot.



Step 6

- Remove the power cord from the hard drive.
- Remove the IDE cable from the hard drive.
- Grip the sides of the hard drive and slowly pull outward.



Step 7

- Remove the three top screws of the hard drive and slide the hard drive out.
- Insert new hard drive.

To reassemble your device, follow these instructions in reverse order.