



Installing Apple PowerMac G4 Cube Airport Card

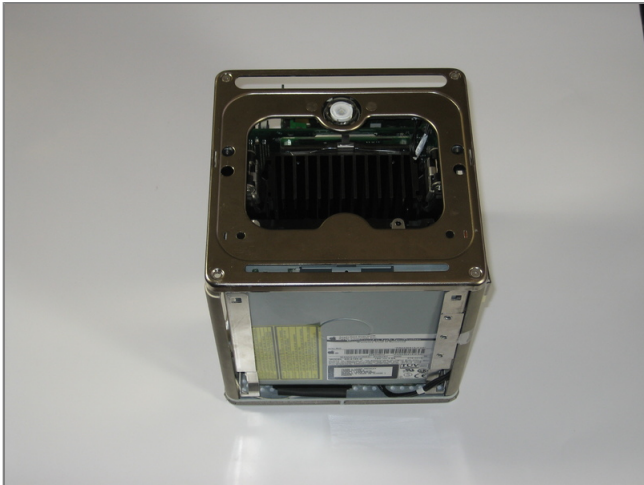
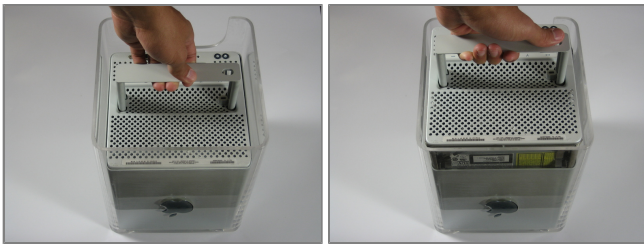
Tools used in this guide

- [T10 Torx Screwdriver](#)



Step 1 - disassembly Outer Case

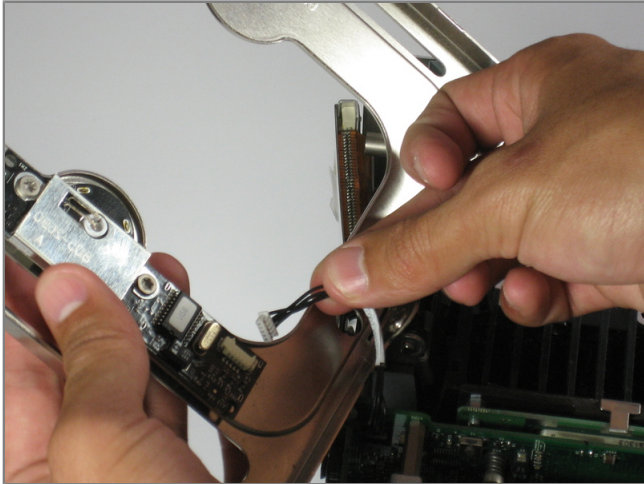
- Release the back handle of the PowerMac. Slowly pull out the cube by holding the end of the handle. Watch for any parts that may become entangled with the outercase.
- Push back the handle after you have taken the core out of the case.



Step 2

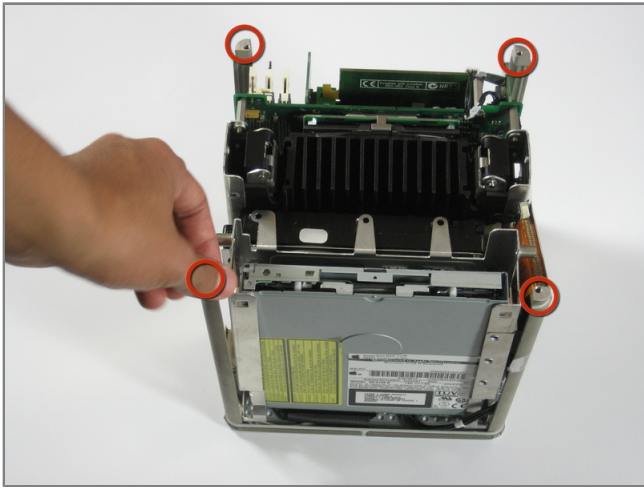
- Put the cube onto its backside and remove the four screws on the front plate. Then remove the two screws on each side.





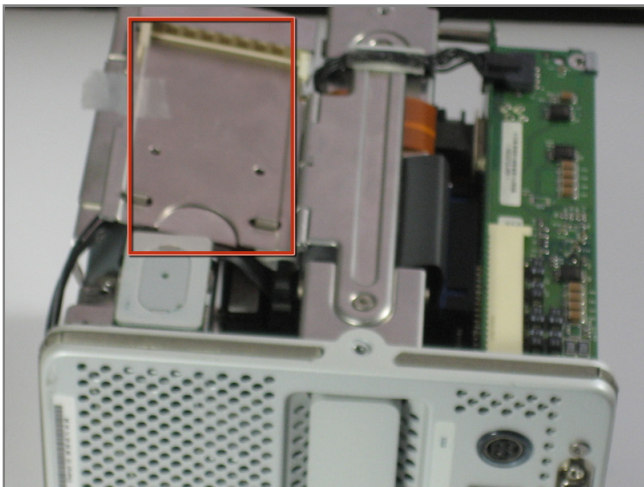
Step 3

- Slowly lift the plate off the cube and disconnect the power cord.



Step 4

- Remove the four pillars from each corner.
- The pillars should come out easily.



Step 5 - Airport Card

- Firmly grasp the airport card on the adapter and pull downward.
- Replace with new airport card.

To reassemble your device, follow these instructions in reverse order.