

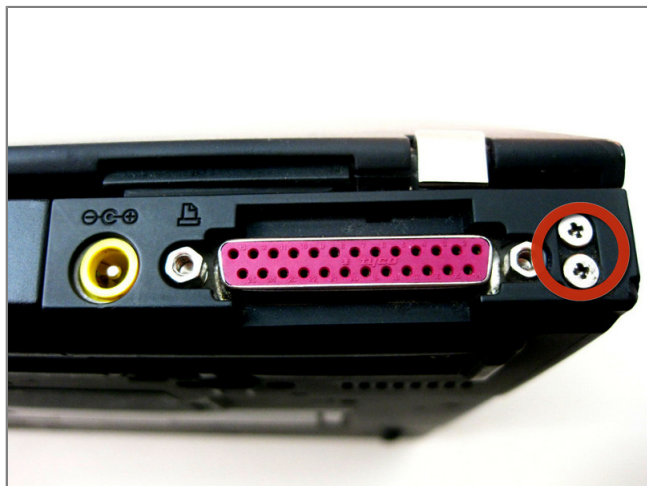


Repairing IBM ThinkPad T42 Wi-Fi Card



Step 1 - disassembly Rear Cover

- Unscrew the following screws on the underside of the T42.
 - Note: for ease of reassembly, keep track of which screws go where.



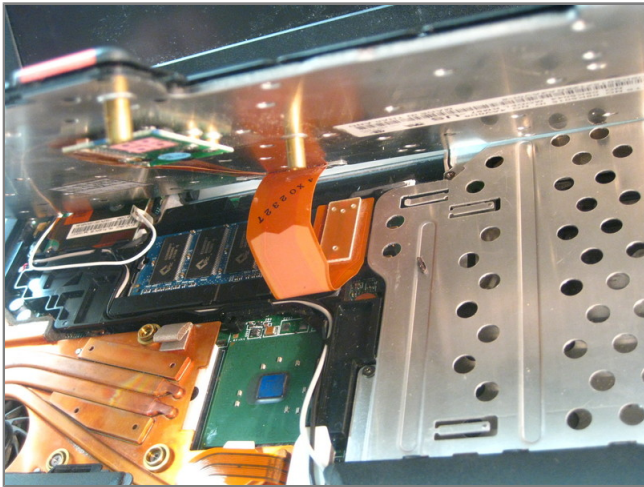
Step 2

- Unscrew the 4 screws on either side the rear end of the laptop.



Step 3 - installation Keyboard and Trackpad

- Flip the laptop over and open the display carefully - the keyboard, palm rest and bezel will be loose.



Step 4

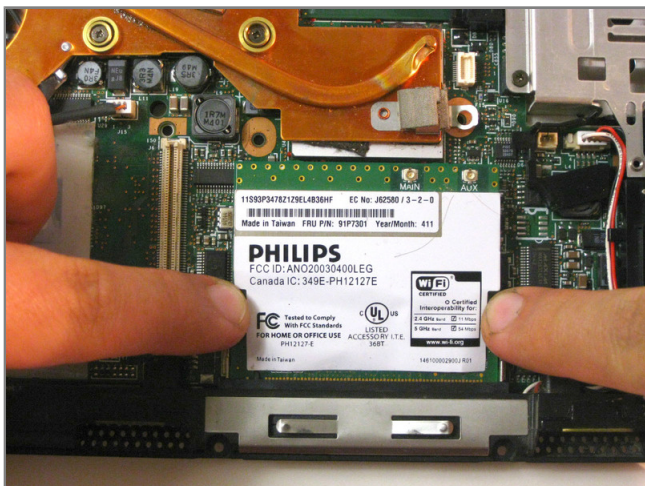
- Maneuver the palm rest away from the keyboard carefully, both the keyboard and palm rest/trackpad will come off together.
- ****WARNING**** Both the keyboard and trackpad have connectors to the motherboard. Disconnect these before completely removing either component.





Step 5 - Wi-Fi Card

- To remove Wi-Fi card, first disconnect both display wires on the top right.



Step 6

- Then slide both of the metal pieces holding it down outwards, and it will pop up.



Step 7

- Carefully pull it out.