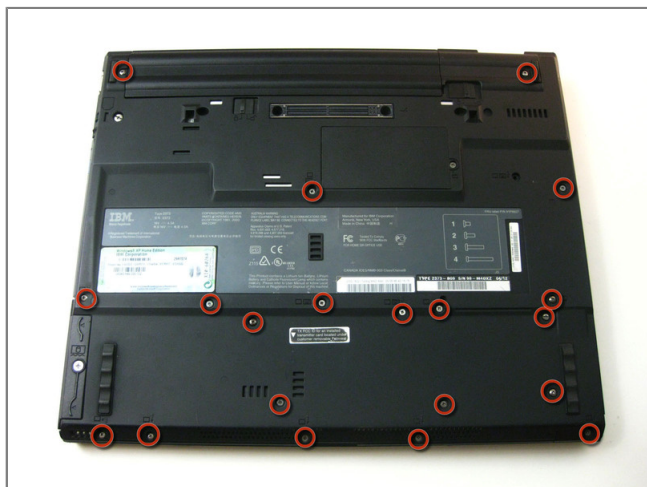


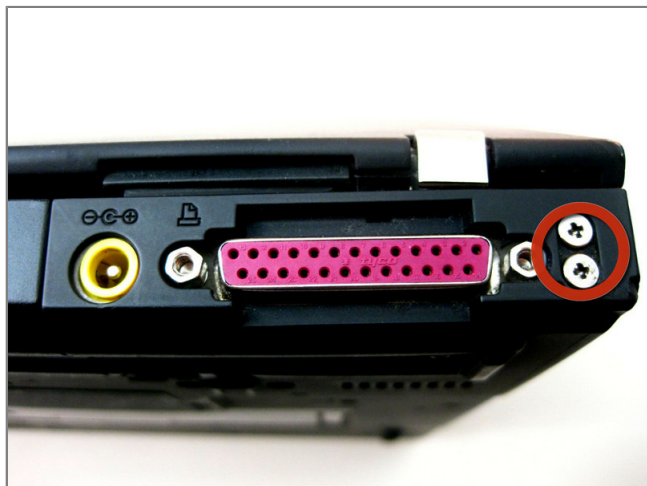


Repairing IBM ThinkPad T42 Modem Daughter Card



Step 1 - disassembly Rear Cover

- Unscrew the following screws on the underside of the T42.
 - Note: for ease of reassembly, keep track of which screws go where.



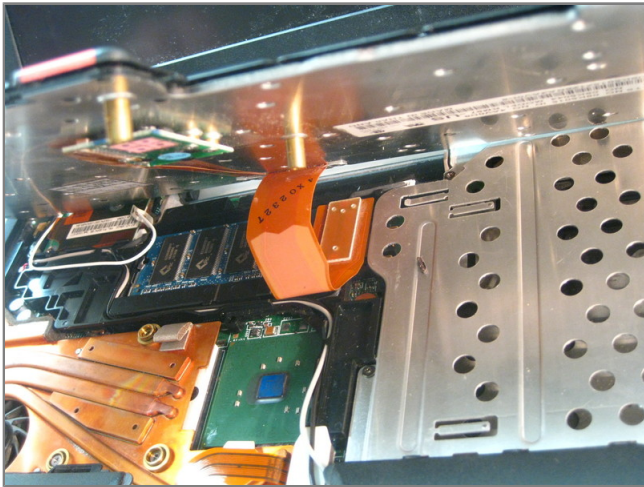
Step 2

- Unscrew the 4 screws on either side the rear end of the laptop.



Step 3 - installation Keyboard and Trackpad

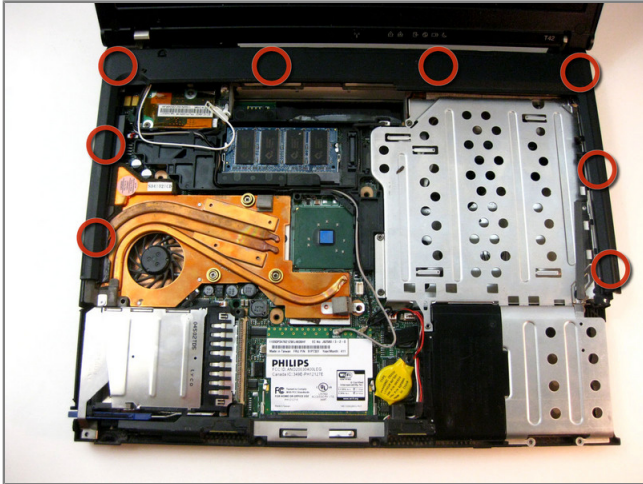
- Flip the laptop over and open the display carefully - the keyboard, palm rest and bezel will be loose.



Step 4

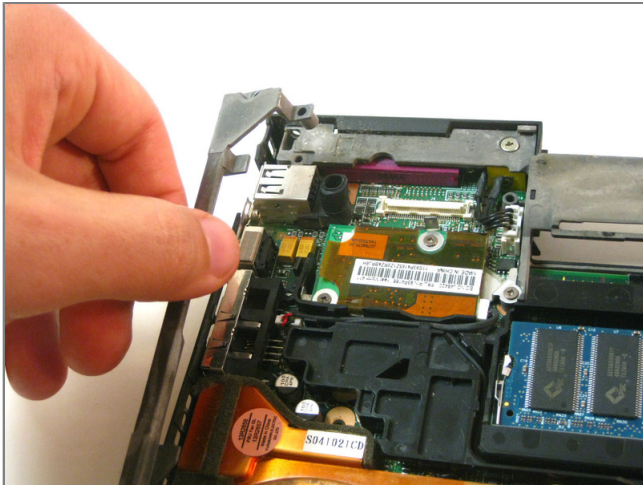
- Maneuver the palm rest away from the keyboard carefully, both the keyboard and palm rest/trackpad will come off together.
- ****WARNING**** Both the keyboard and trackpad have connectors to the motherboard. Disconnect these before completely removing either component.





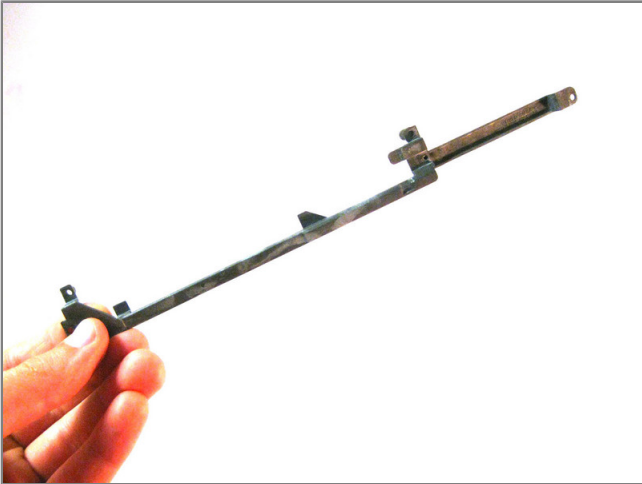
Step 5 - disassembly Plastic Edge Cover

- Starting from the bottom right, carefully pry off the bezel. Use a small, flathead screwdriver if necessary.



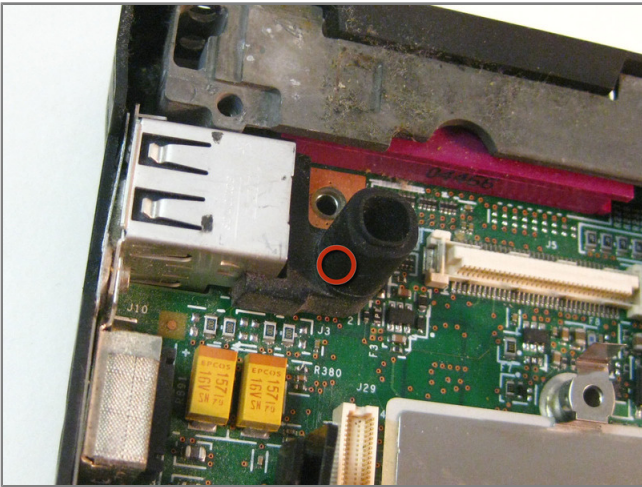
Step 6 - disassembly Lower Bracket

- The bracket will be free to move.



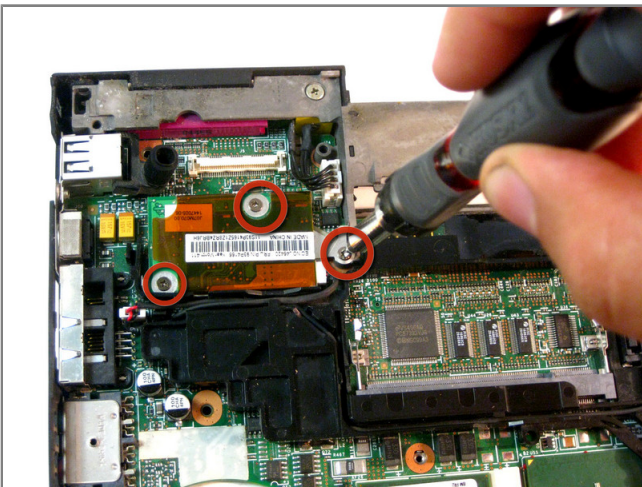
Step 7

- Remove the bracket.



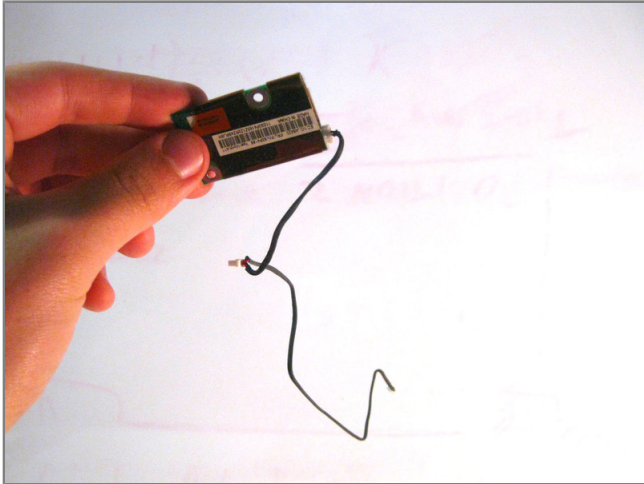
Step 8

- Then remove the small rubber piece covering the small battery.



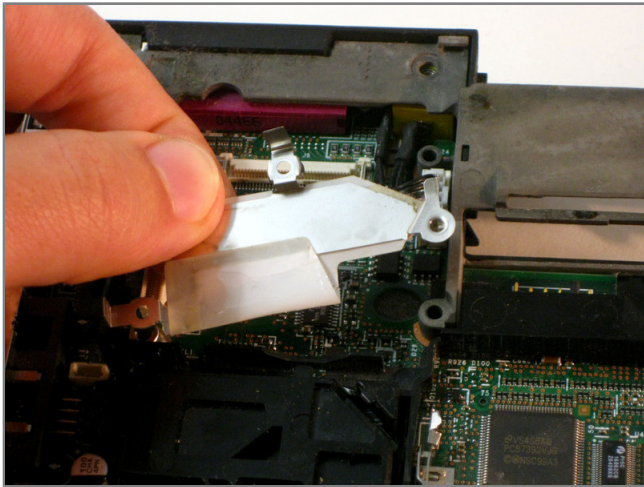
Step 9 - Modem Daughter Card

- Unscrew three phillips screws as shown.



Step 10

- The connector cables are wrapped around components for organization so follow these, unplug them and carefully pull them free.



Step 11

- Then remove the bracket that was sitting beneath it.