

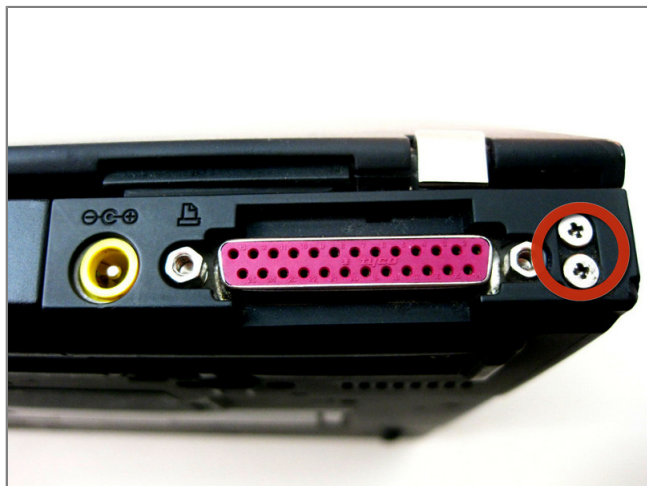


Repairing IBM ThinkPad T42 Mini-PCI Port



Step 1 - disassembly Rear Cover

- Unscrew the following screws on the underside of the T42.
 - Note: for ease of reassembly, keep track of which screws go where.



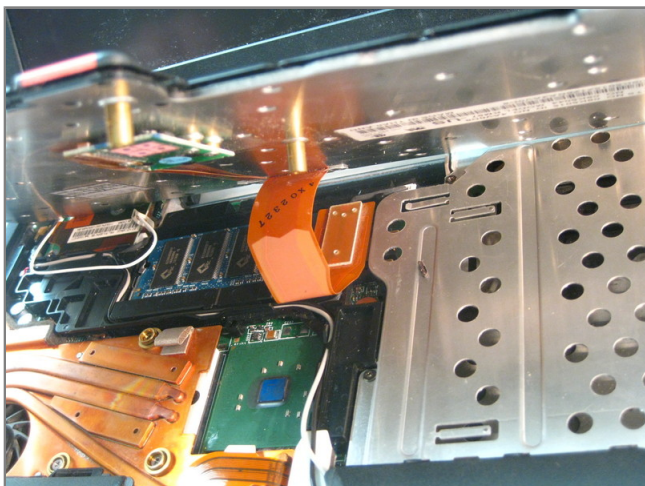
Step 2

- Unscrew the 4 screws on either side the rear end of the laptop.



Step 3 - installation Keyboard and Trackpad

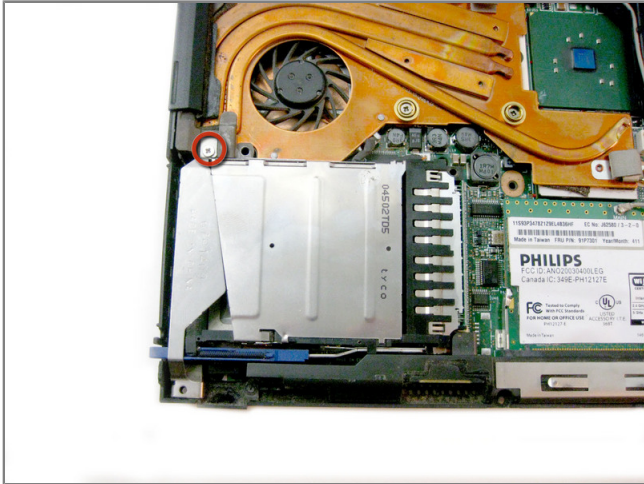
- Flip the laptop over and open the display carefully - the keyboard, palm rest and bezel will be loose.



Step 4

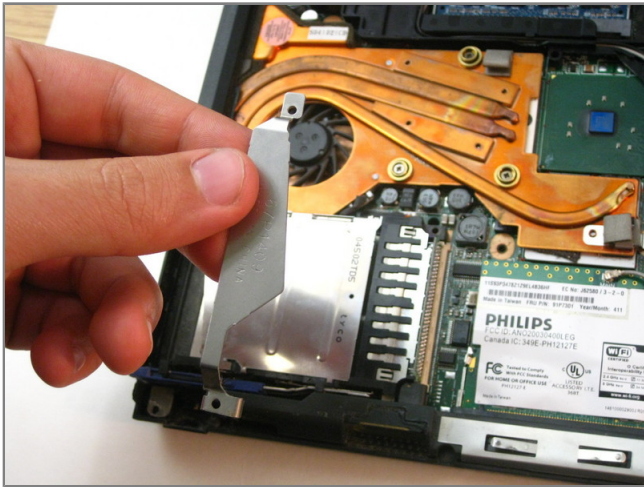
- Maneuver the palm rest away from the keyboard carefully, both the keyboard and palm rest/trackpad will come off together.
- ****WARNING**** Both the keyboard and trackpad have connectors to the motherboard. Disconnect these before completely removing either component.





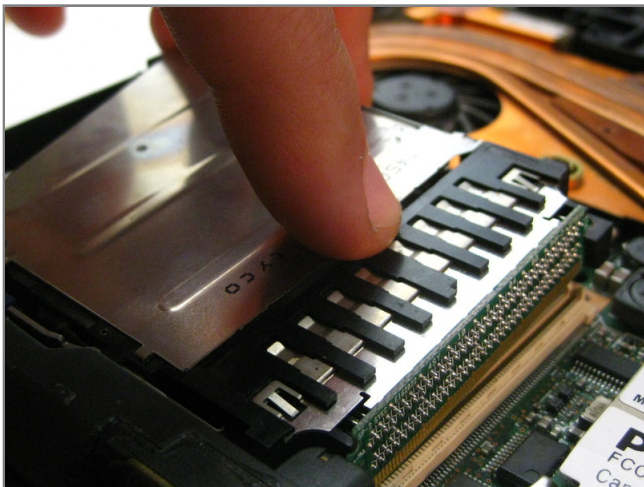
Step 5 - Mini-PCI Port

- Unscrew the screw holding the port's bracket down.



Step 6

- Remove the bracket.



Step 7

- Carefully disconnect it from the motherboard.