

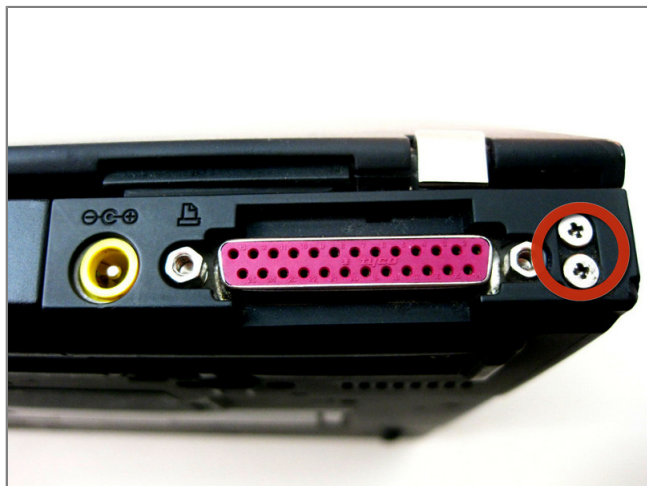


## Installing IBM ThinkPad T42 Display



### *Step 1 - disassembly Rear Cover*

- Unscrew the following screws on the underside of the T42.
  - Note: for ease of reassembly, keep track of which screws go where.



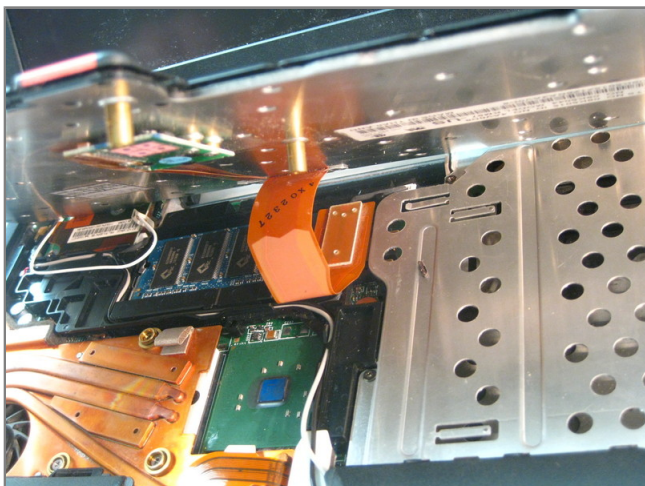
### *Step 2*

- Unscrew the 4 screws on either side the rear end of the laptop.



### Step 3 - Keyboard and Trackpad

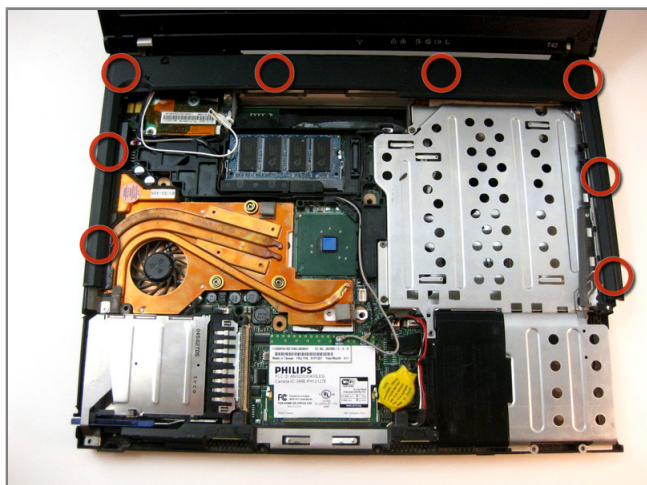
- Flip the laptop over and open the display carefully - the keyboard, palm rest and bezel will be loose.



### Step 4

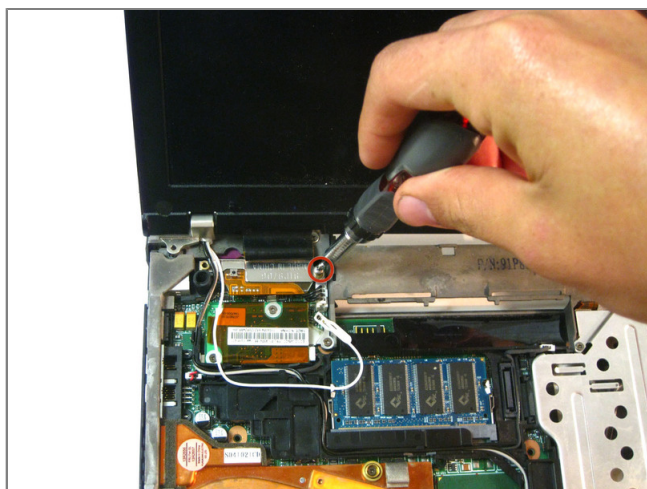
- Maneuver the palm rest away from the keyboard carefully, both the keyboard and palm rest/trackpad will come off together.
- **\*\*WARNING\*\*** Both the keyboard and trackpad have connectors to the motherboard. Disconnect these before completely removing either component.





## Step 5 - Display

- Removing the Plastic
  - Starting from the bottom right, carefully pry off the bezel. Use a small, flathead screwdriver if necessary.



## Step 6

- Unscrew the screws holding it down. Along with the one pictured, there is another one on the top right edge.



### ***Step 7***

- Carefully unplug the its connection with the motherboard.
- Now it will be free to move. Carefully maneuver it out.