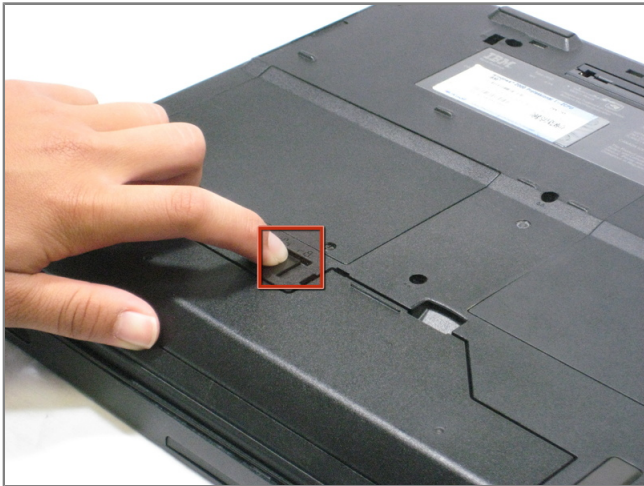




Disassembling IBM ThinkPad A30 Motherboard

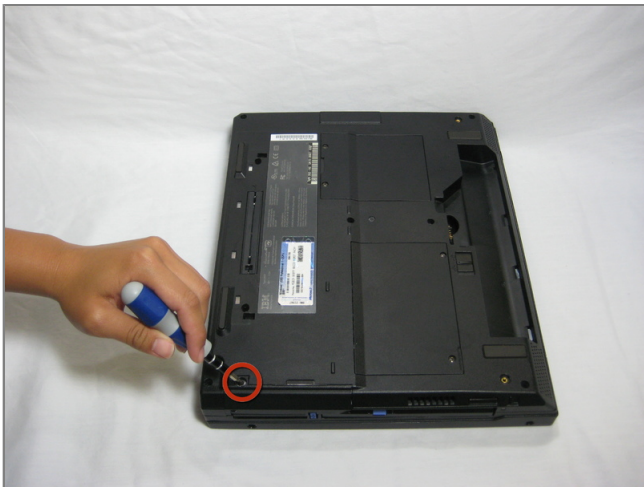
Tools used in this guide

- [Phillips #00 Screwdriver](#) (1)
- [Phillips #1 Screwdriver](#) (1)
- [Plastic Opening Tools](#) (1)



Step 1 - Battery

- Place the ThinkPad on its back.
- Slide the highlighted tab to the left.
- With your finger on the tab, remove the battery by lifting it outwards.



Step 2 - Hard Drive

- Remove the highlighted screw with a Phillips #1 screwdriver.
- Pull the hard drive out.





Step 3 - CD Drive

- With the laptop on its left side towards you, locate the highlighted switch.
- Slide the switch to the right. The plastic lever will pop out.
- Pull the plastic lever, then, pull the CD drive out.



Step 4 - Floppy Disk Drive

- With the ThinkPad's right side facing you, locate marked switch.
- Slide switch left. A black lever will pop out.
- Pull the level gently and remove Floppy Disk drive.





Step 5 - Upper Case

- Make sure the laptop is upside down and oriented in the direction shown.
- Remove the six 16.7mm screws inside the circled holes.



Step 6

- Rotate the ThinkPad so that the hard drive bay is facing you.
- Remove the black cover to reveal a 14.8mm screw.
- Remove the uncovered screw with a Phillips #0 screwdriver.



Step 7

- Flip the ThinkPad over and open the LCD panel.



- Pry apart the keyboard with a plastic opening tool or with your fingers.



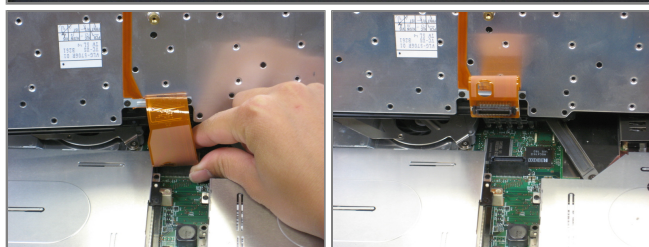
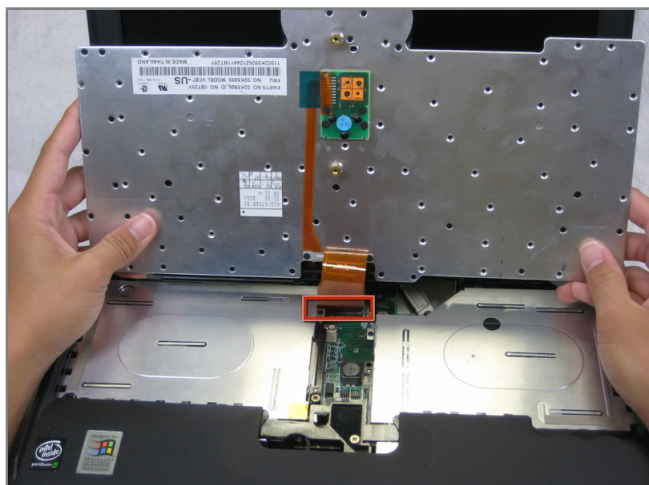
Step 8

- Be careful not to pull out the keyboard carelessly; there is a connector underneath it!



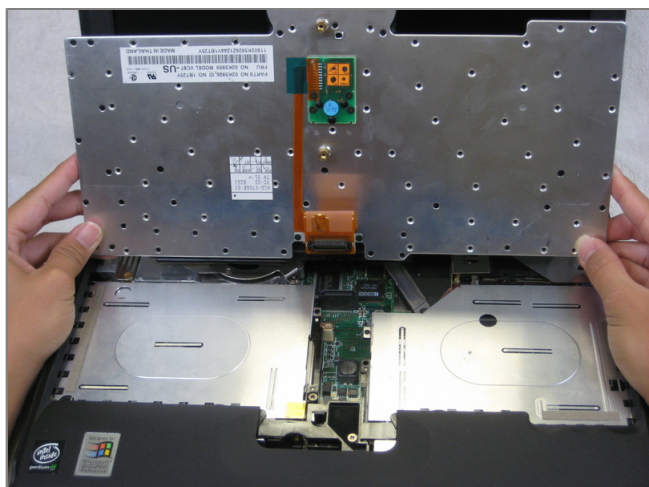
- Lift the front end of the keyboard as shown.
- Using your fingers, remove the black film cover.





Step 9

- Locate the connector attached to the motherboard.
- Disconnect the ribbon cable by removing the connector.



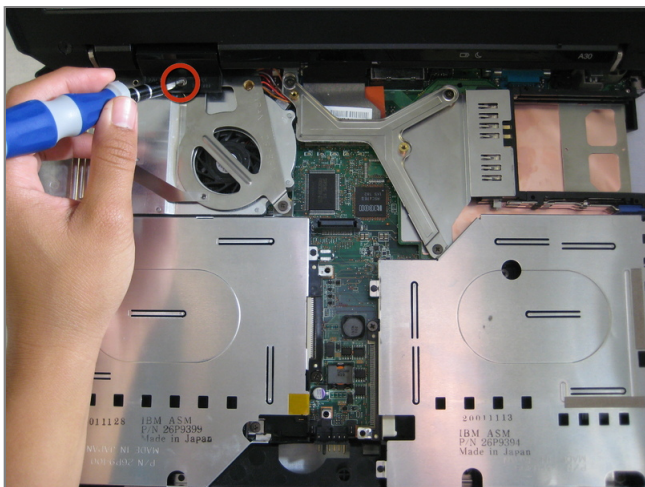
Step 10

- Lift and remove the keyboard.
- Remove the two 5.6mm screws.
- Remove the 16.7mm screw.



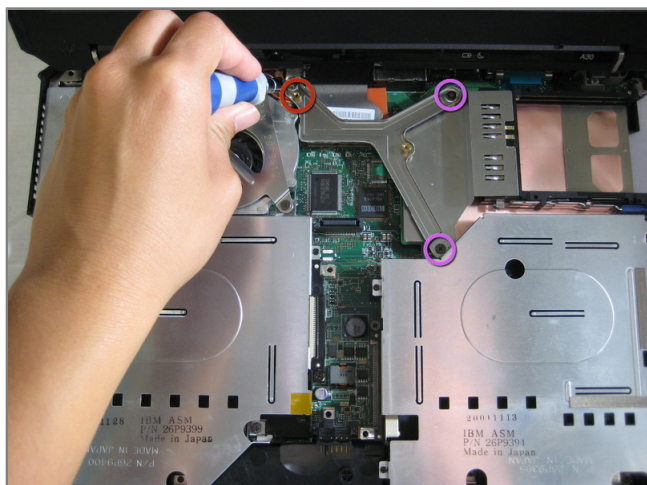
Step 11

- You will need to use a little force. Be wary of the tabs.
- Pry off the upper case with your hands.



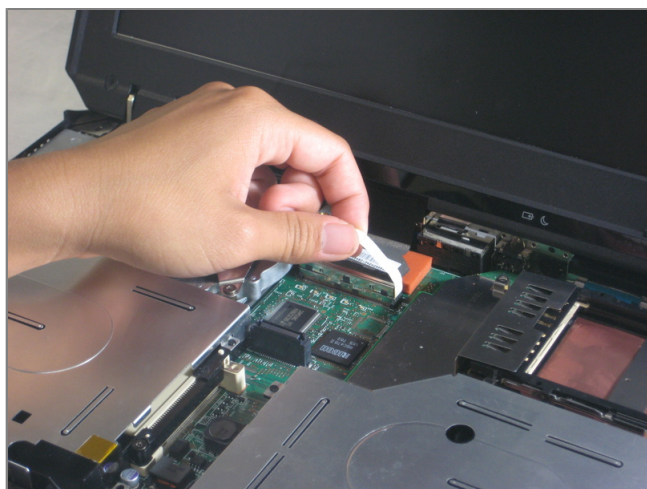
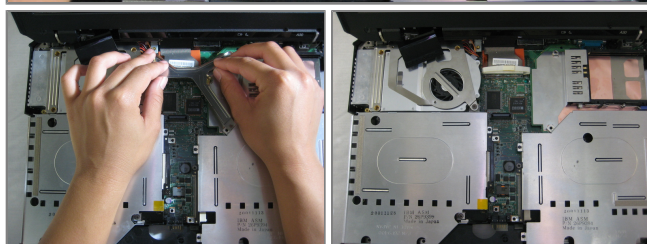
Step 12 - Display Assembly

- Remove the 5.6mm screw that holds the LCD to the upper case.



Step 13

- Remove the 5.6mm screw on the left side of the three-pronged connector.
- Remove the other two 16.7mm screws.
- Lift and remove connector.



Step 14

- Pull out the white tab connecting the LCD to the motherboard.





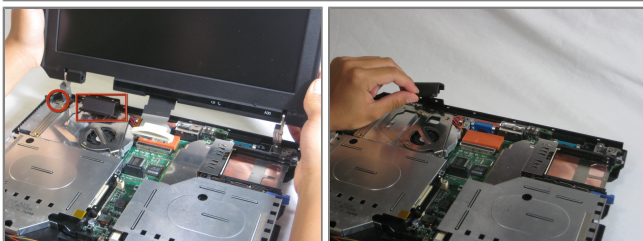
Step 15

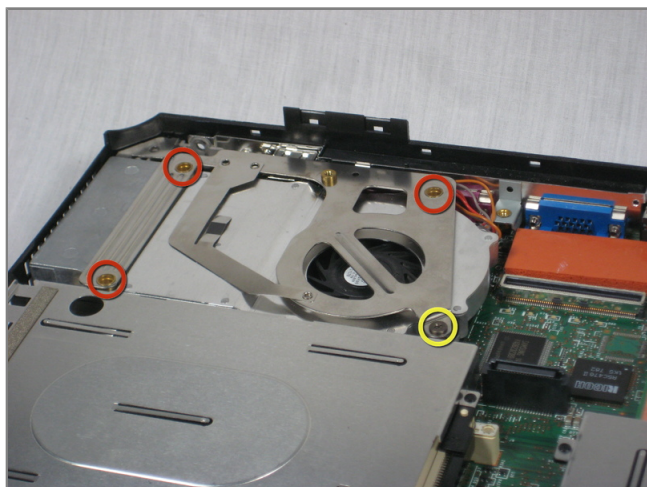
- Turn the laptop so that the back is facing you.
- Remove the four 5.6mm long screws.



Step 16

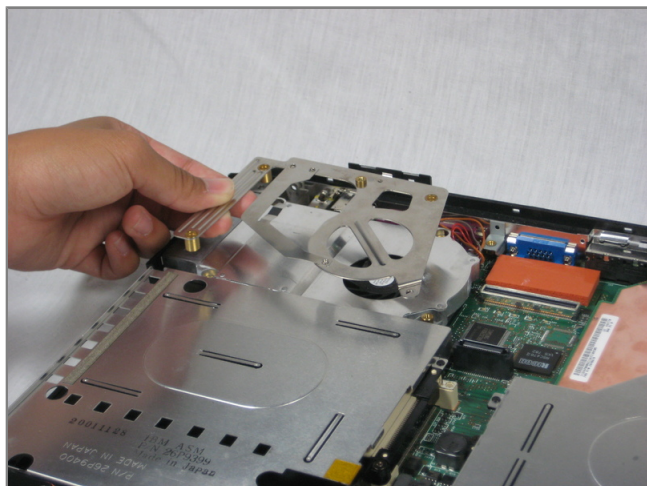
- Place the laptop so that the LCD is facing you again.
- Gently lift the LCD monitor up and out.
- Remove the black plastic tab.





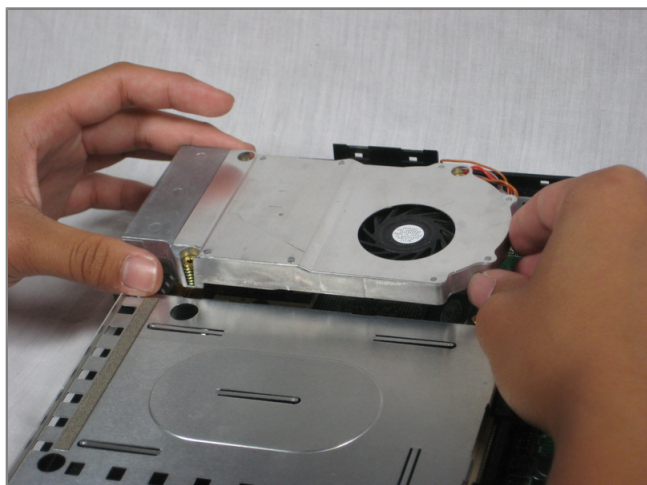
Step 17 - CPU Fan

- Locate the 4 screws that will need to be removed.
- One screw (yellow) is observable. The three other screws (red) are below the heatsink bracket.
- Remove the 5.6mm (yellow) and three 16.1mm (red) screws.



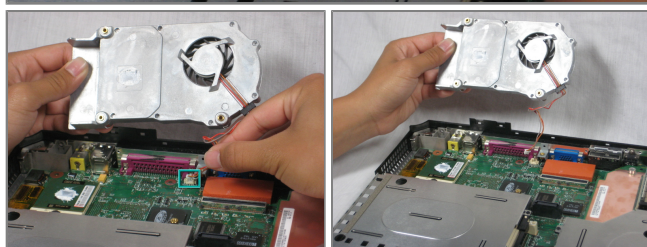
Step 18

- Lift the heatsink bracket up.



Step 19

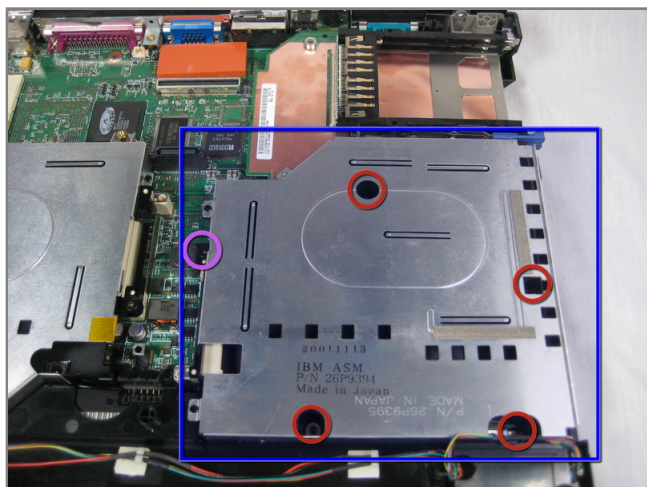
- Be careful not to pull too hard! There is a cable attached to the fan!
- Lift the fan/heatsink assembly up.
- Locate the fan power cable and pull upwards near the connector.
- Remove the fan/heatsink assembly.



Step 20 - CPU

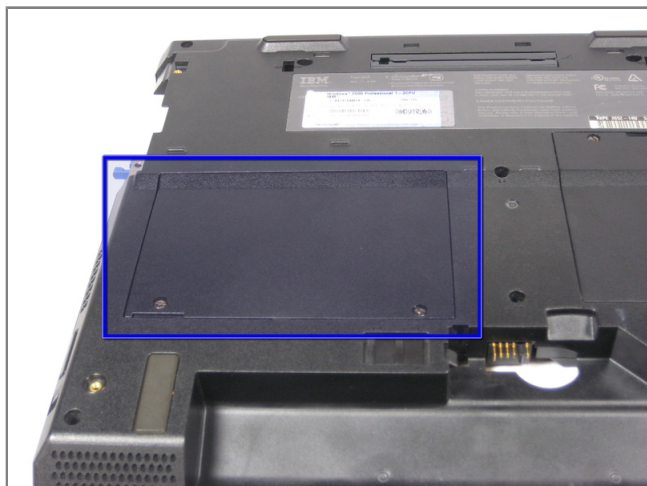
- Use a flathead to turn the screw 180 degrees.
- Remove the CPU by lifting it upwards.
- If the CPU is reusable, place it in an antistatic bag and away from moisture.





Step 21 - Motherboard

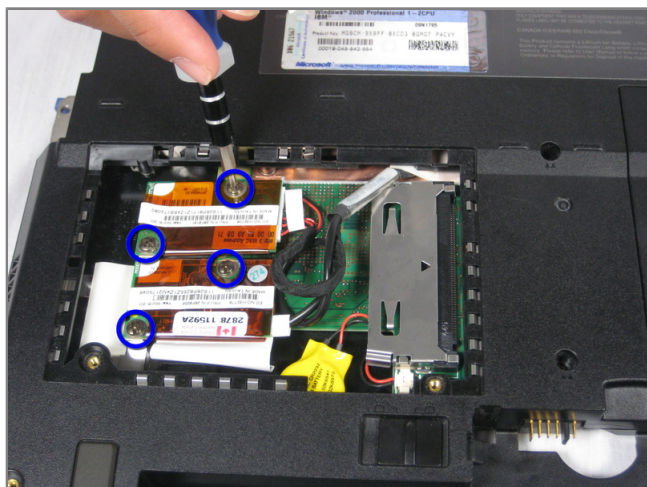
- Locate the floppy drive bay.
- Remove the four 5.6mm screws.
- Remove the 16mm screw.



Step 22

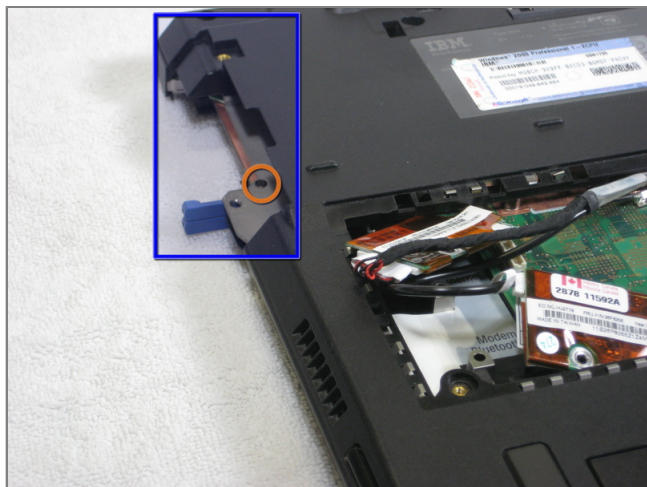
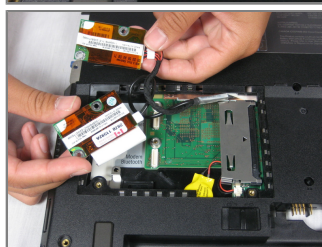
- Turn the laptop over so that the battery is towards you.
- Locate the modem and ethernet card bay.
- Remove the two 5.3mm cover screws.
- Gently lift the cover.





Step 23

- Remove the four 9.1mm screws attached to the modem and ethernet cards.
- When lifting the cards, be careful not to rip out the cables!
- Gently lift the modem and ethernet cards.



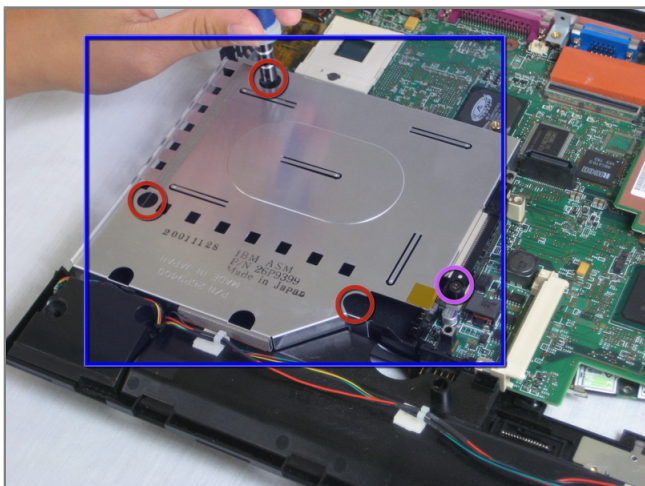
Step 24

- Locate the hard drive slot.
- Remove the 8.8mm screw with a Phillips #0 screwdriver.



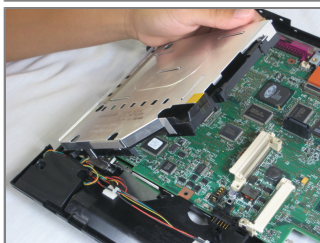
Step 25

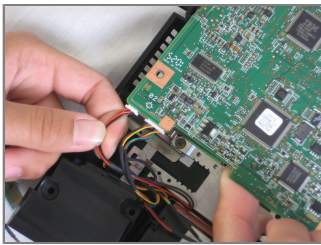
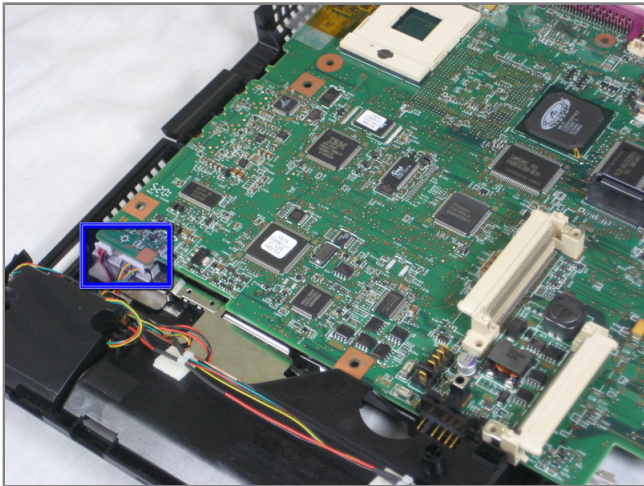
- Turn the laptop over again and orient it as shown.
- Lift the left side of the floppy disk bay and pull it out.
- The black lever will pop out.



Step 26

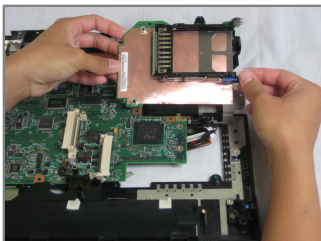
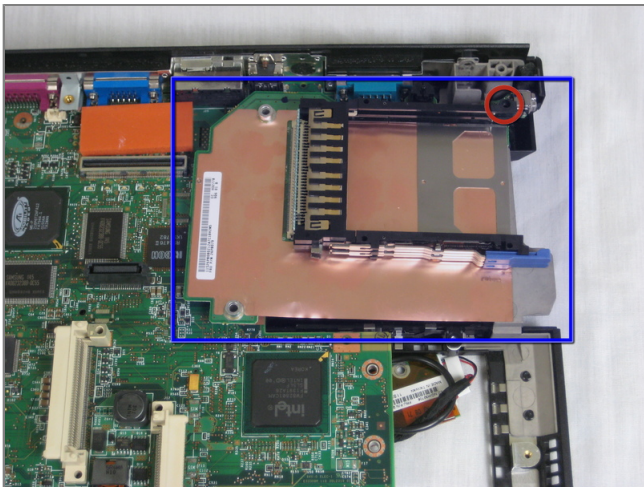
- Locate the CD Drive Bay
- Remove the three 5.6mm screws.
- Remove the 16mm screw.
- Lift the right side and pull the CD drive bay out.
- The black lever will pop out.





Step 27

- Once the CD drive bay is removed, locate the speaker data and power cables.
- Remove the cables from the motherboard.



Step 28

- Locate the expansion bay.
- Remove the 16mm screw.
- Lift and remove the expansion bay.



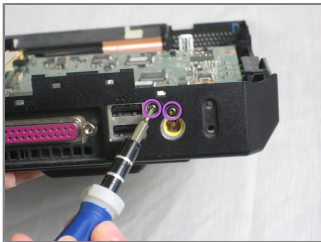
Step 29

- Rotate the laptop so that the back ports are facing you.



Step 30

- Remove the three 5.8mm screws with a Phillips #0 screwdriver.





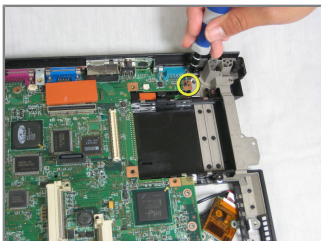
Step 31

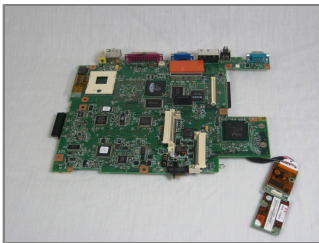
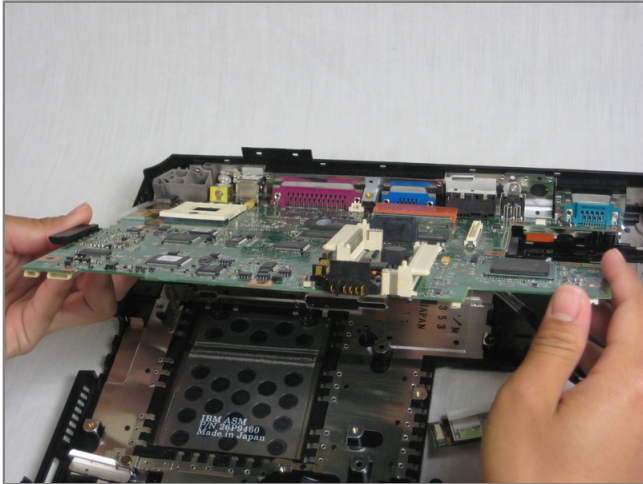
- Remove the six 11mm nuts with a wrench.
- Pliers can be used, but are not recommended.



Step 32

- Rotate the laptop to its original position.
- Remove the 5.6mm screw located on the upper right corner of the motherboard.





Step 33

- The wireless and bluetooth cards are connected to the motherboard!
- Pull out the motherboard towards you carefully.
- Place the motherboard somewhere dry and clean.



To reassemble your device, follow these instructions in reverse order.

This document was last generated on Dec 15, 2010.