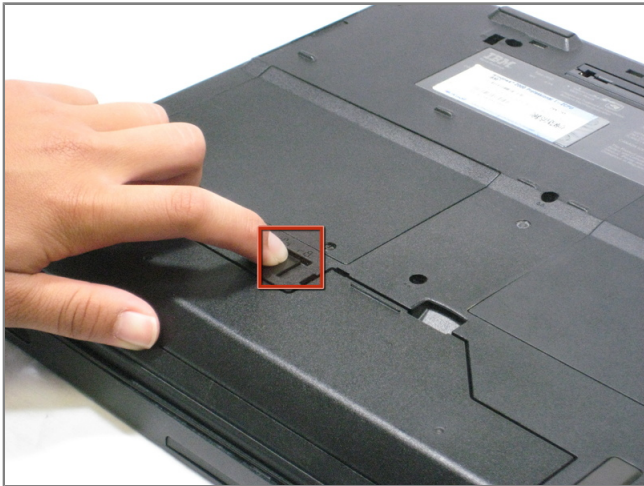




Disassembling IBM ThinkPad A30 Modem and Ethernet Cards

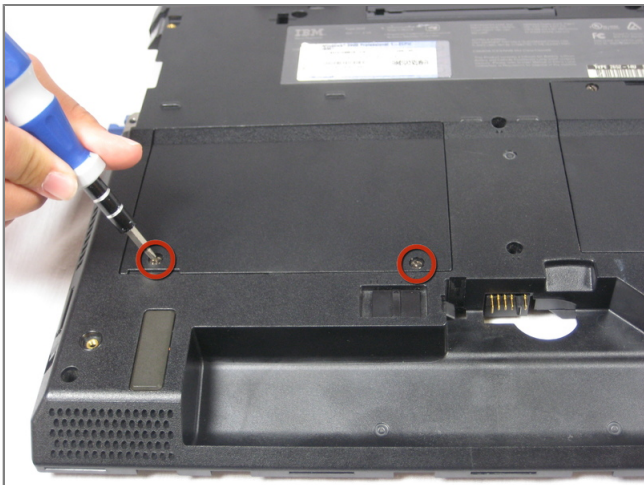
Tools used in this guide

- [Phillips #1 Screwdriver](#) (1)



Step 1 - Battery

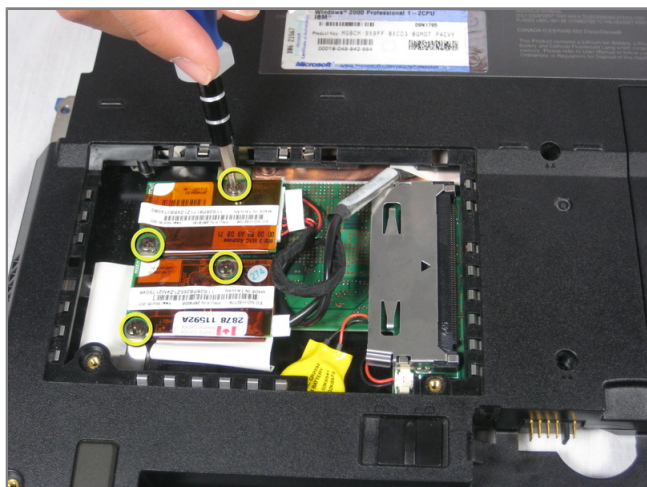
- Place the ThinkPad on its back.
- Slide the highlighted tab to the left.
- With your finger on the tab, remove the battery by lifting it outwards.



Step 2 - Modem and Ethernet Cards

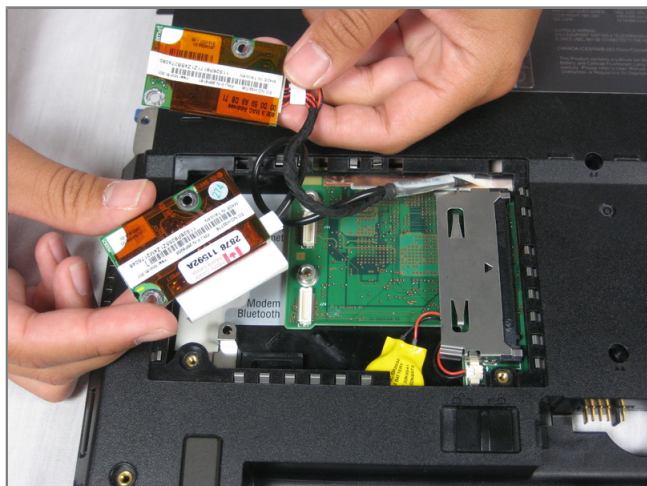
- Remove the two 5.3mm cover screws.
- Gently lift the cover.





Step 3

- Remove the four 9.1mm screws attached to the ethernet and modem cards.



Step 4

- When lifting the cards, be careful not to rip out the cables!
- Gently lift the modem and ethernet cards.
- Remove the cables that attach the modem and ethernet cards.



To reassemble your device, follow these instructions in reverse order.

This document was last generated on Dec 15, 2010.