

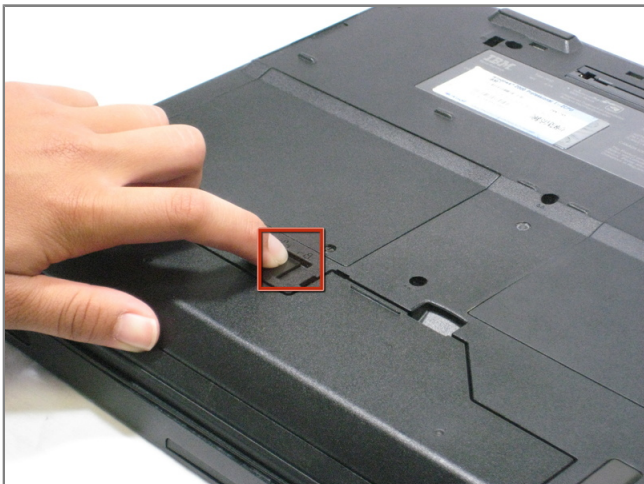


Disassembling IBM ThinkPad A30 Display Assembly

Tools used in this guide

- [Phillips #0 Screwdriver](#) (1)
- [Phillips #1 Screwdriver](#) (1)

Prerequisite: Battery, Uppercase removed



Step 1 - Battery

- Place the ThinkPad on its back.
- Slide the highlighted tab to the left.
- With your finger on the tab, remove the battery by lifting it outwards.



Step 2 - Hard Drive

- Remove the highlighted screw with a Phillips #1 screwdriver.
- Pull the hard drive out.





Step 3 - Upper Case

- Make sure the laptop is upside down and oriented in the direction shown.

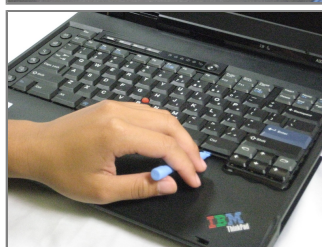


- Remove the six 16.7mm screws inside the circled holes.



Step 4

- Rotate the ThinkPad so that the hard drive bay is facing you.
- Remove the black cover to reveal a 14.8mm screw.
- Remove the uncovered screw with a Phillips #0 screwdriver.



Step 5

- Flip the ThinkPad over and open the LCD panel.



- Pry apart the keyboard with a plastic opening tool or with your fingers.

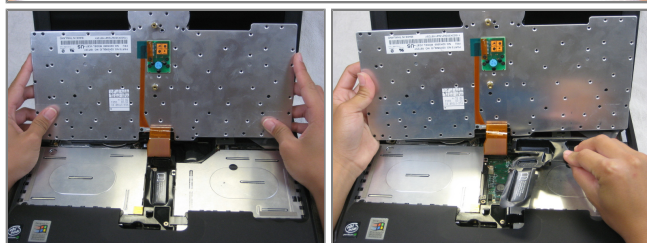


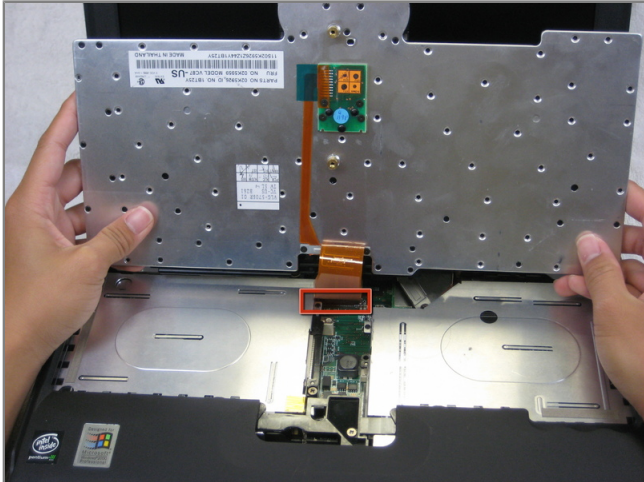
Step 6

- Be careful not to pull out the keyboard carelessly; there is a connector underneath it!



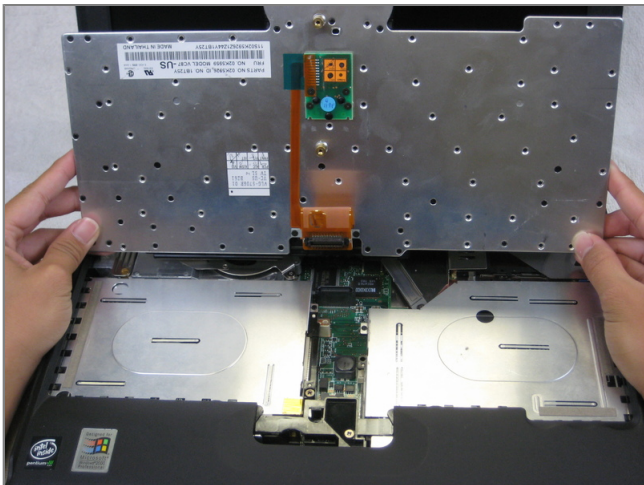
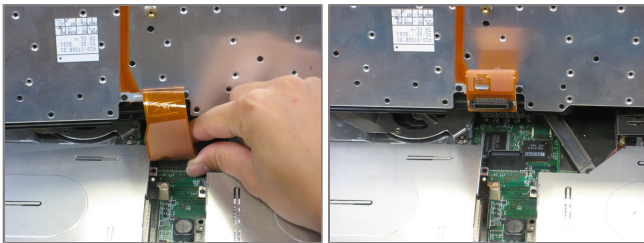
- Lift the front end of the keyboard as shown.
- Using your fingers, remove the black film cover.





Step 7

- Locate the connector attached to the motherboard.
- Disconnect the ribbon cable by removing the connector.



Step 8

- Lift and remove the keyboard.
- Remove the two 5.6mm screws.
- Remove the 16.7mm screw.





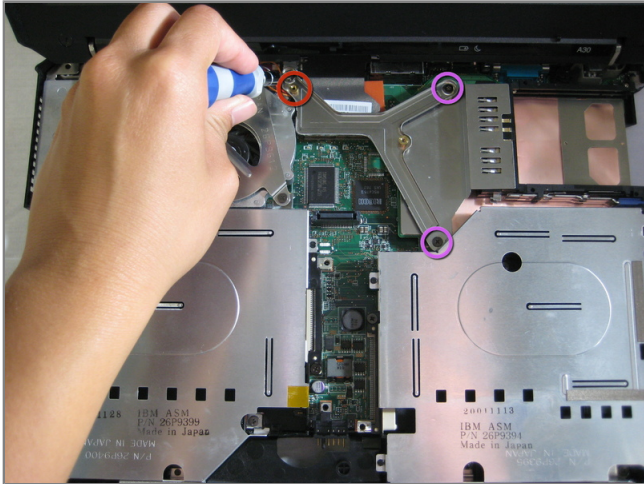
Step 9

- You will need to use a little force. Be wary of the tabs.
- Pry off the upper case with your hands.



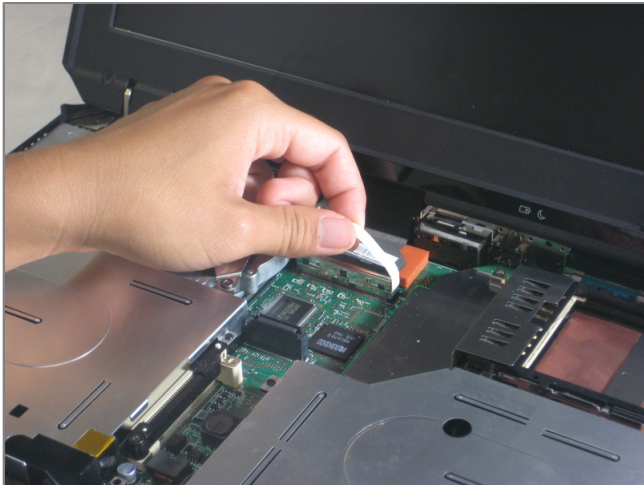
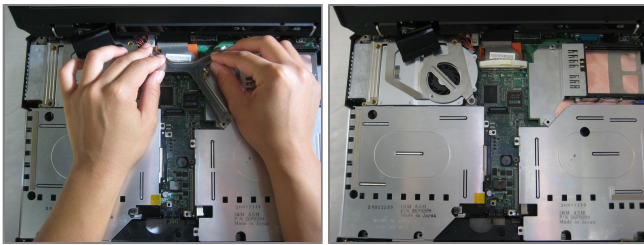
Step 10 - Display Assembly

- Remove the 5.6mm screw that holds the LCD to the upper case.



Step 11

- Remove the 5.6mm screw on the left side of the three-pronged connector.
- Remove the other two 16.7mm screws.
- Lift and remove connector.



Step 12

- Pull out the white tab connecting the LCD to the motherboard.





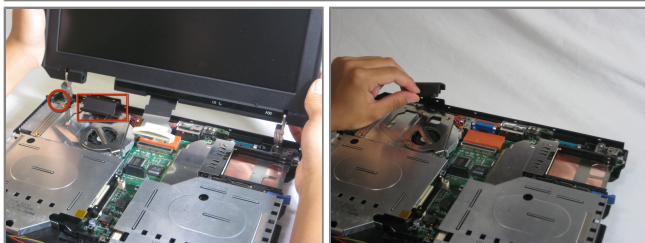
Step 13

- Turn the laptop so that the back is facing you.
- Remove the four 5.6mm long screws.



Step 14

- Place the laptop so that the LCD is facing you again.
- Gently lift the LCD monitor up and out.
- Remove the black plastic tab.



To reassemble your device, follow these instructions in reverse order.

This document was last generated on Dec 15, 2010.