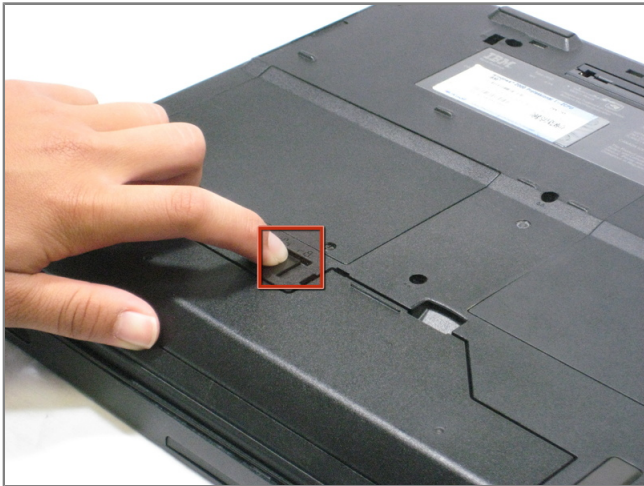




Disassembling IBM ThinkPad A30 CPU

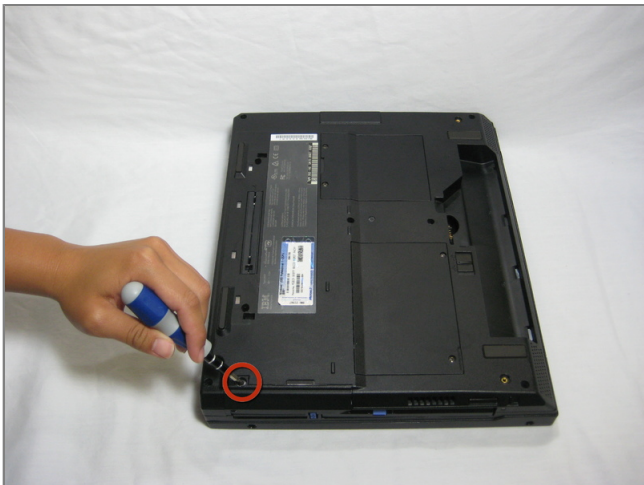
Tools used in this guide

- [Small Flathead Screwdriver](#) (1)



Step 1 - Battery

- Place the ThinkPad on its back.
- Slide the highlighted tab to the left.
- With your finger on the tab, remove the battery by lifting it outwards.



Step 2 - Hard Drive

- Remove the highlighted screw with a Phillips #1 screwdriver.
- Pull the hard drive out.





Step 3 - Upper Case

- Make sure the laptop is upside down and oriented in the direction shown.



- Remove the six 16.7mm screws inside the circled holes.



Step 4

- Rotate the ThinkPad so that the hard drive bay is facing you.
- Remove the black cover to reveal a 14.8mm screw.
- Remove the uncovered screw with a Phillips #0 screwdriver.



Step 5

- Flip the ThinkPad over and open the LCD panel.



- Pry apart the keyboard with a plastic opening tool or with your fingers.

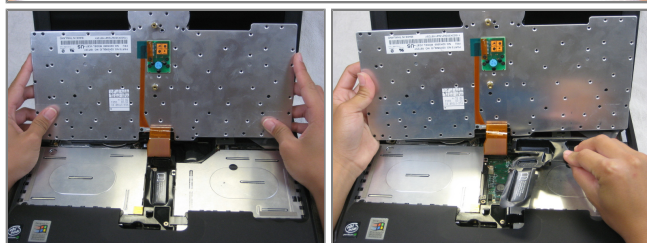


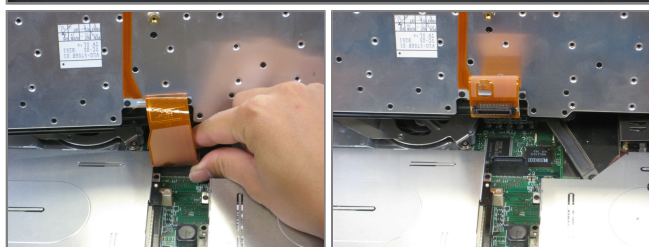
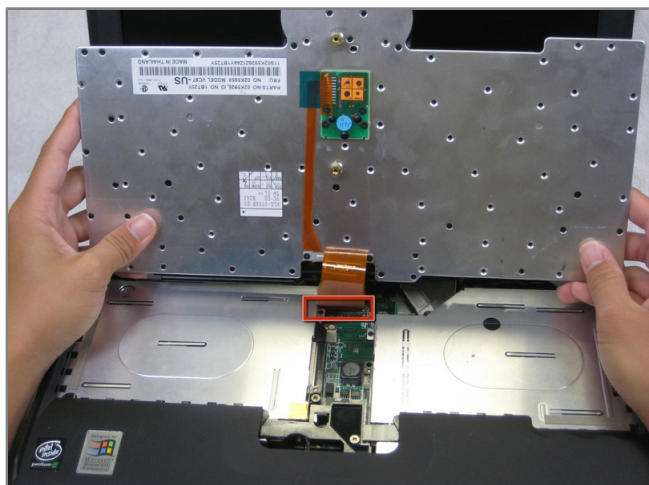
Step 6

- Be careful not to pull out the keyboard carelessly; there is a connector underneath it!



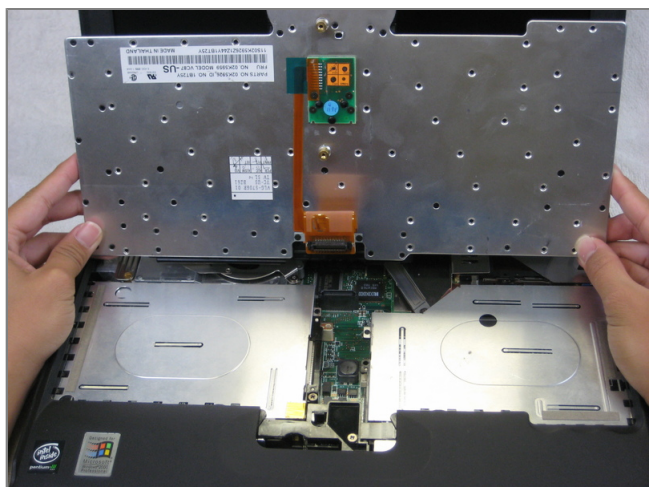
- Lift the front end of the keyboard as shown.
- Using your fingers, remove the black film cover.





Step 7

- Locate the connector attached to the motherboard.
- Disconnect the ribbon cable by removing the connector.



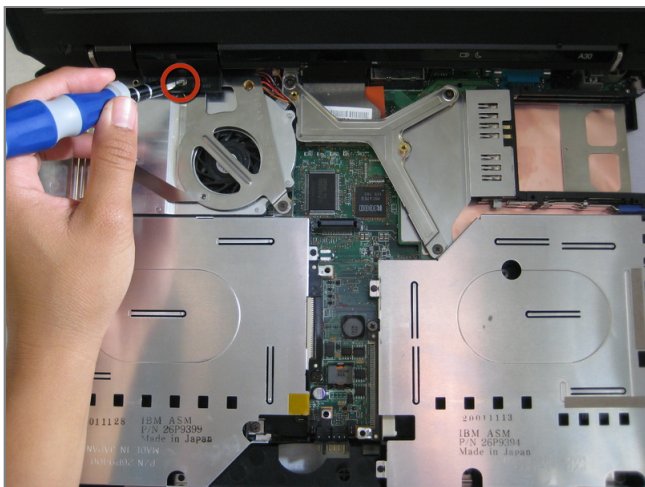
Step 8

- Lift and remove the keyboard.
- Remove the two 5.6mm screws.
- Remove the 16.7mm screw.



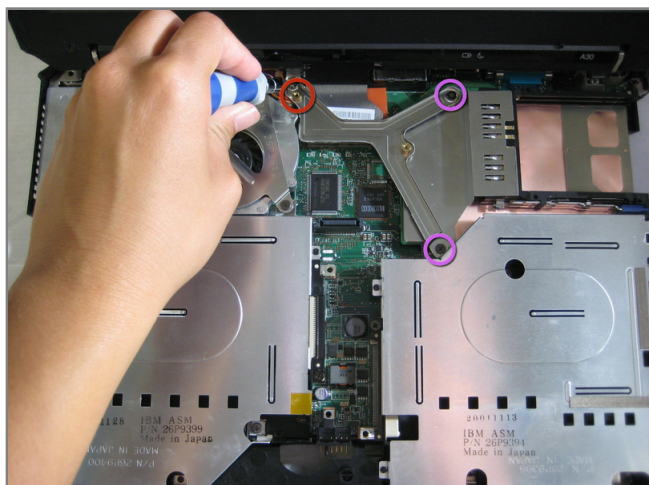
Step 9

- You will need to use a little force. Be wary of the tabs.
- Pry off the upper case with your hands.



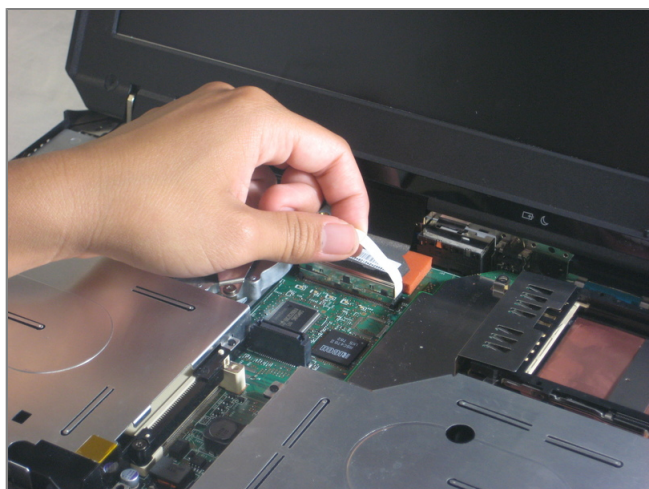
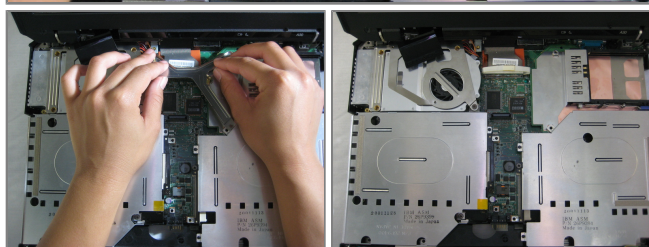
Step 10 - Display Assembly

- Remove the 5.6mm screw that holds the LCD to the upper case.



Step 11

- Remove the 5.6mm screw on the left side of the three-pronged connector.
- Remove the other two 16.7mm screws.
- Lift and remove connector.



Step 12

- Pull out the white tab connecting the LCD to the motherboard.





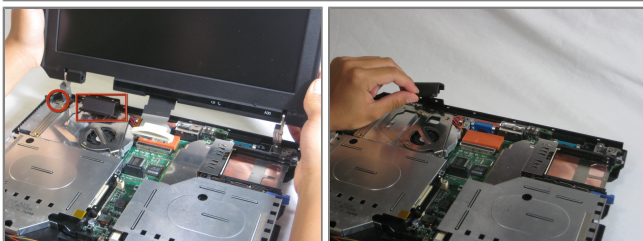
Step 13

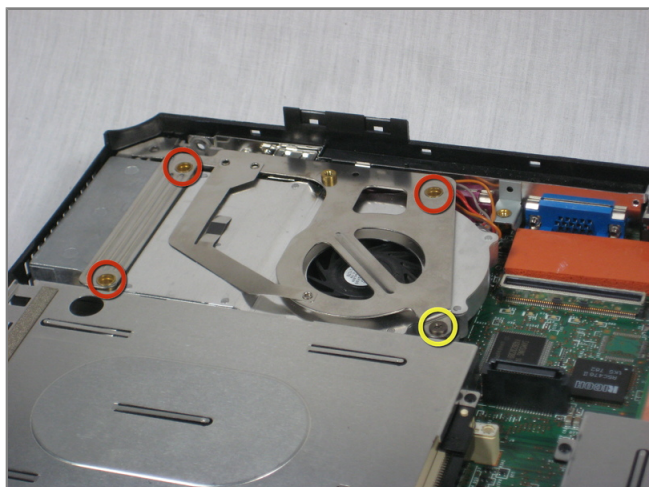
- Turn the laptop so that the back is facing you.
- Remove the four 5.6mm long screws.



Step 14

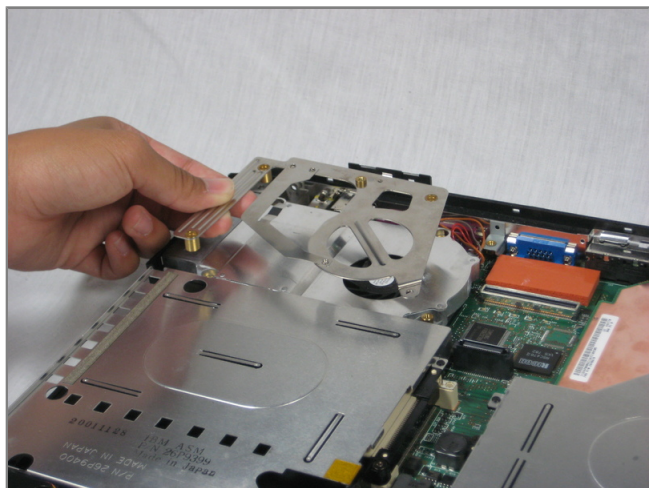
- Place the laptop so that the LCD is facing you again.
- Gently lift the LCD monitor up and out.
- Remove the black plastic tab.





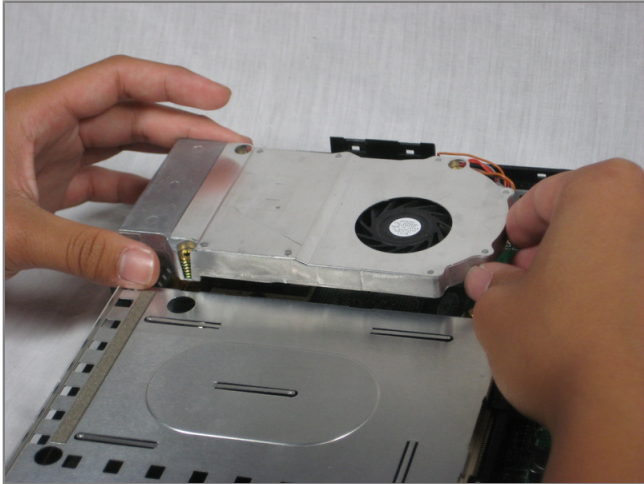
Step 15 - CPU Fan

- Locate the 4 screws that will need to be removed.
- One screw (yellow) is observable. The three other screws (red) are below the heatsink bracket.
- Remove the 5.6mm (yellow) and three 16.1mm (red) screws.



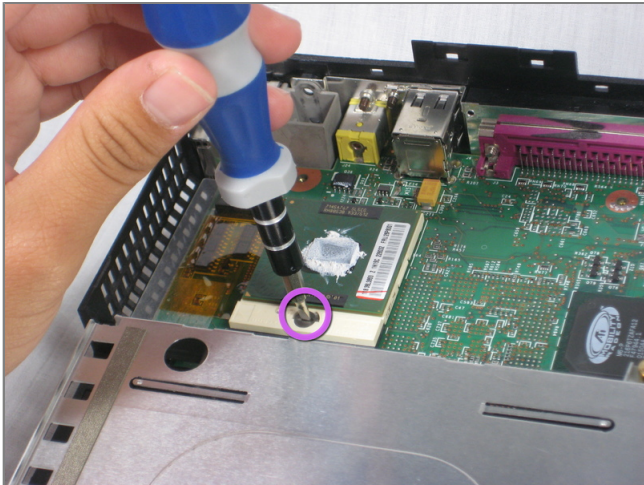
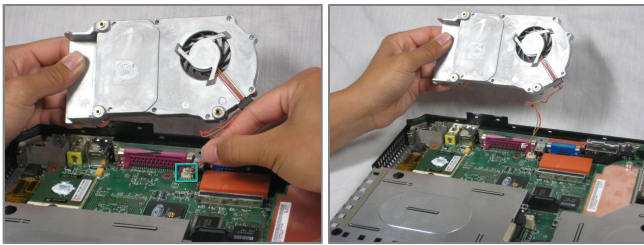
Step 16

- Lift the heatsink bracket up.



Step 17

- Be careful not to pull too hard! There is a cable attached to the fan!
- Lift the fan/heatsink assembly up.
- Locate the fan power cable and pull upwards near the connector.
- Remove the fan/heatsink assembly.



Step 18 - CPU

- Use a flathead to turn the screw 180 degrees.
- Remove the CPU by lifting it upwards.
- If the CPU is reusable, place it in an antistatic bag and away from moisture.



To reassemble your device, follow these instructions in reverse order.

This document was last generated on Dec 15, 2010.