



Installing Apple Time Capsule Power Supply

Tools used in this guide

- [Heat gun or hair dryer](#)
- [Phillips #00 Screwdriver](#)
- [Spudger](#)

Parts relevant to this guide

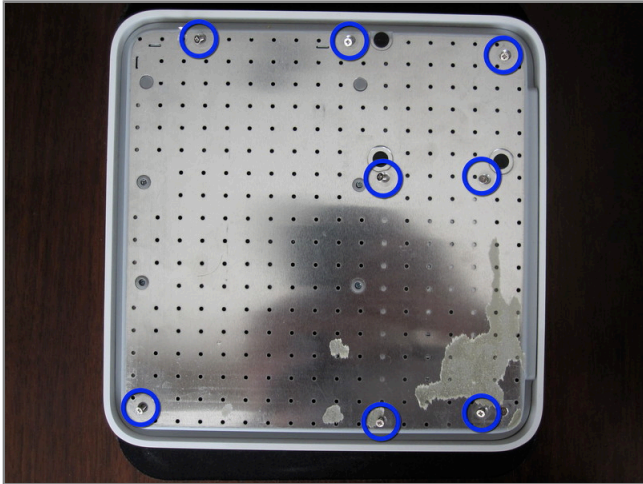
- [Time Capsule Power Supply](#)



Step 1 - disassembly Lower Case

- Place the unit bottom up on your work surface. Use a cloth or similar to protect it from scratches.
- Use a heat gun, hair dryer or similar in order to weaken the adhesives in the tape that hold it in place.
 - Start in a corner, it can be tricky to get a good grip at first.
 - Progress slowly not to tear the tape, but do not over heat the unit.
- You will tear some of the tape, don't worry too much about it. It will still hold in place fairly well.





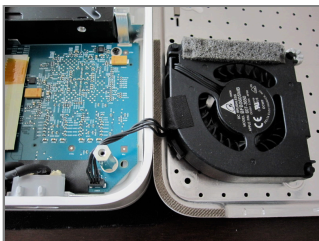
Step 2

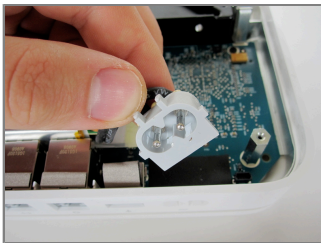
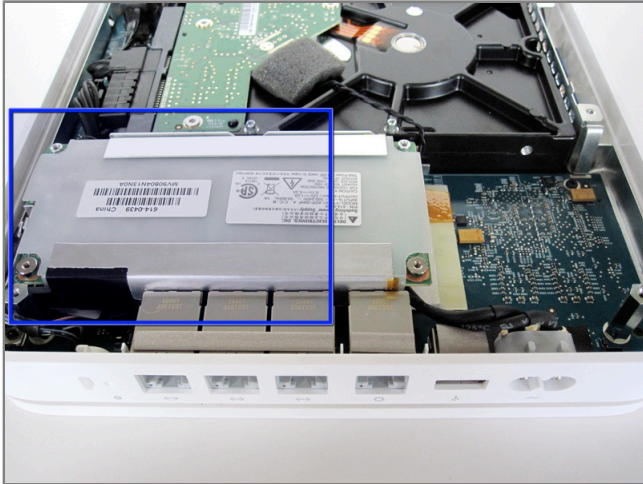
- Using a Phillips #00 screwdriver undo the 8 screws shown with blue.



Step 3

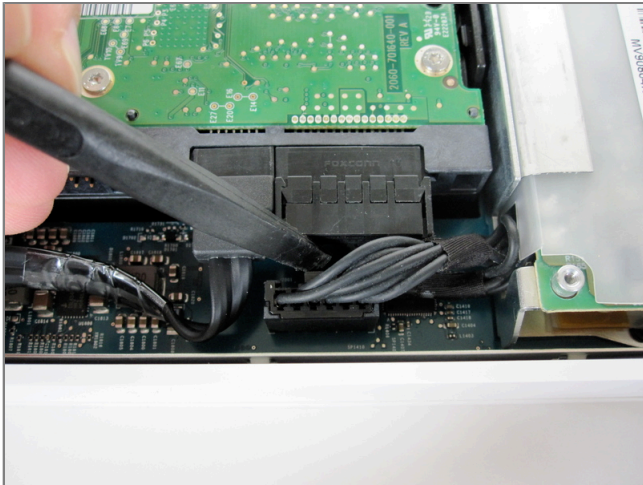
- With the ethernet connectors facing you carefully open the unit like on the picture. I can best describe the opening technique as you would open a book from the rear cover.
- Unplug the fan, a spudger can be of good use here.
 - Unless you are replacing or working on the fan you don't need to unplug it.
- The fan is connected to the motherboard next to the power connector. Don't lift the plate straight up or use force.





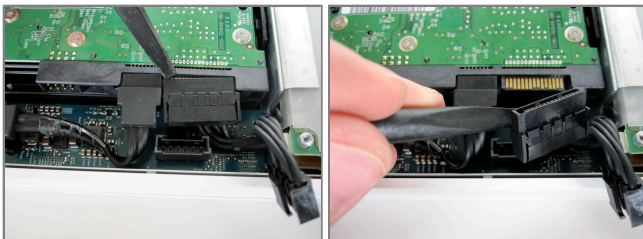
Step 4 - Power Supply

- Power supply shown in blue
- Start by removing the DC plug by lifting it straight up.



Step 5

- Using a spudger unplug the cable that supplies the motherboard with power.
- Then, using the same spudger, unplug the HDD power cable.
- If your not used to working with data plugs in tight spaces it could be a good idea to remove the HDD first. Consult the [HDD removal guide](#) for instructions.





Step 6

- Lift the power supply out of its mountings.
- The mounts can snag the motherboard somewhat. Just fiddle it a little and it will come loose.

