



Repairing Apple Studio Display M2454 USB Ports

Tools used in this guide

- [2mm Hex Screwdriver](#)
- [Phillips #2 Screwdriver](#)



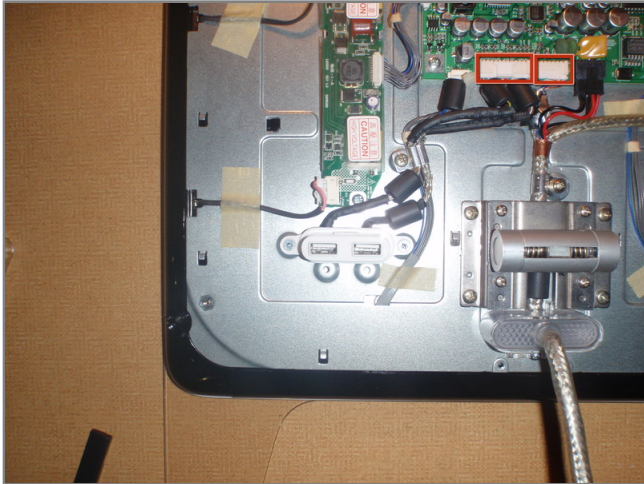
Step 1 - USB Ports

- The USB ports are located on the back side of the monitor, below the plastic cover and metallic panel; on the lower left hand side.
- The first step is to remove the plastic cover panel.
- To do so, remove the three 2mm hex screws on the monitor's stand, as well as the four 2mm hex screws located on the four corners of the back plastic cover panel.
- After removing the mentioned screws, it is possible to take off the panels and began examining the inner components. Make sure main cable is pulled through plastic port.
- For additional help removing the back panel, refer to the repair guide for the LCD Main Board.



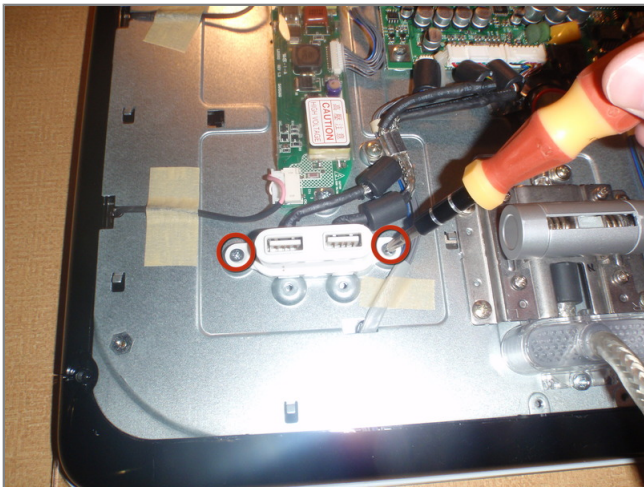
Step 2

- Remove the three screws holding metal plate, one on the top in the middle, and two at the bottom by the main cable.
- Push the metal plate towards bottom of the monitor to release it from clips and remove.
- After popping off (removing) metal plate, you can now see all inner components, where the USB connector is on left side.



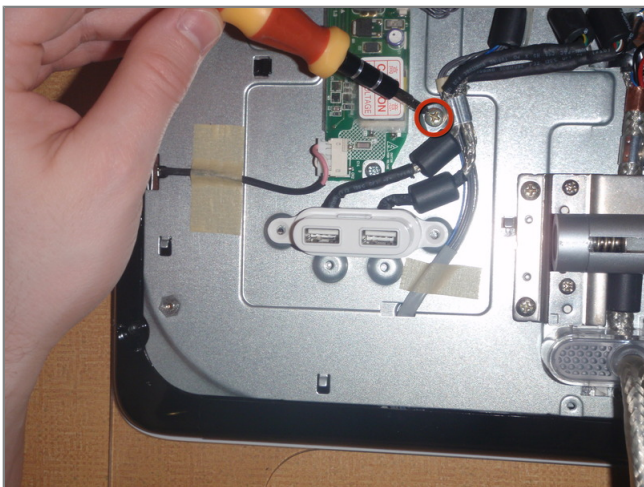
Step 3

- There are two leads from the USB port to the LCD Main Board.
 - Remove the two white connectors by raising the tabs on top gently by hand or using a small pry tool.
 - Pull connectors away from the board while tabs are lifted.
 - Be gentle with tabs, they break easily.



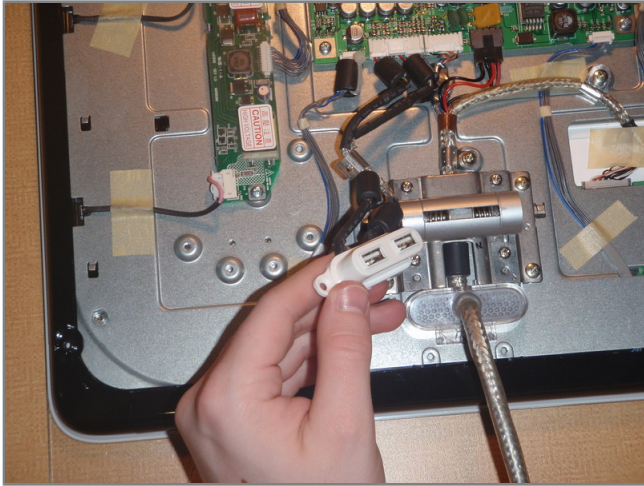
Step 4

- Remove the two phillips head screws on the sides of USB port, using #2 phillips head screwdriver.



Step 5

- Remove the single screw on the cable hold-down, using #2 phillips head screwdriver.



Step 6

- Finally pull USB port away from monitor.
- To insert the new USB port, simply follow these steps in reverse using your new part.