



Repairing Apple Studio Display M2454 Main Computer Cable

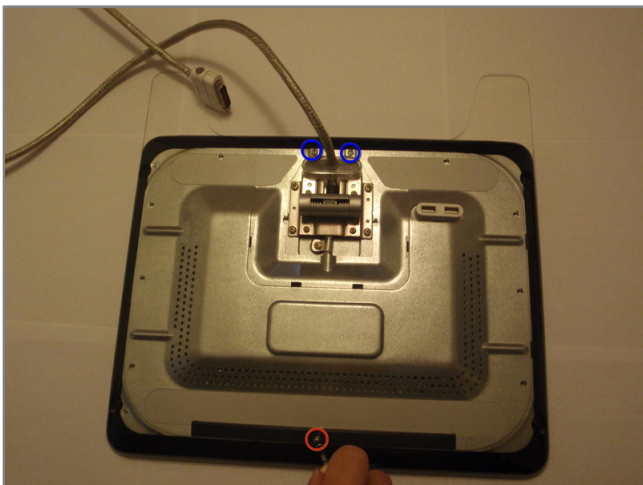
Tools used in this guide

- [2mm Hex Screwdriver](#)
- [Phillips #2 Screwdriver](#)



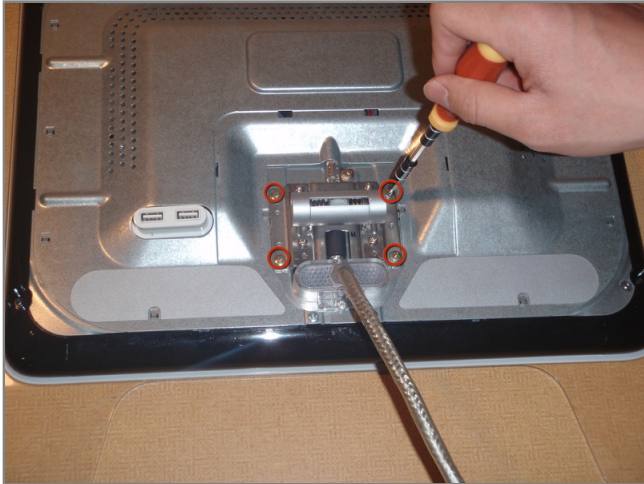
Step 1 - Main Computer Cable

- First, the back panel needs to be removed to access the cable connectors.
 - Locate the three 2mm hex screws located on the top of the stand and remove them.
 - Now locate and remove the four 2mm hex screws on the corners of the back panel.
- Now remove the back panels while pulling the cable through them without damaging either part.



Step 2

- Remove the metal back plate by using the #2 philips head screwdriver and removing the top screw.
- Now remove the two other philips screws located below the cable with the philips head screwdriver.
- With all the screws removed, push the metal plate towards the bottom of the monitor to release the clips holding it to the monitor.
- Pull the metal plate away.



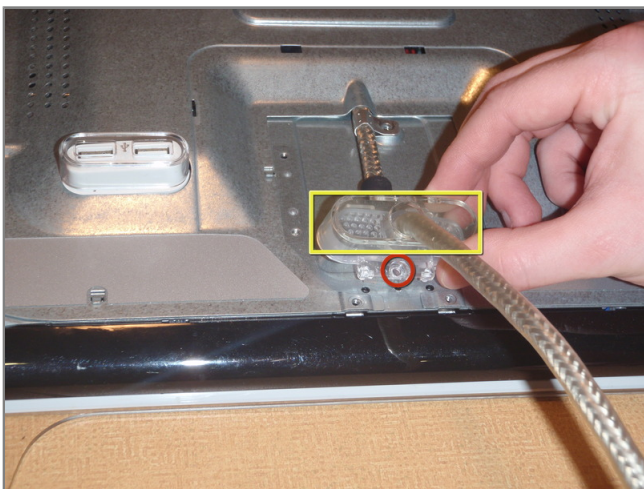
Step 3

- Locate and remove the four #2 phillips screws located on the corners of the stand bracket, using the phillips head screwdriver.
- Pull bracket away from monitor.



Step 4

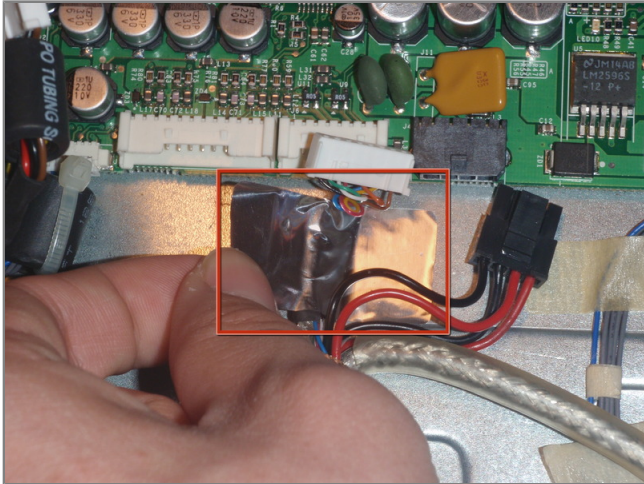
- Remove the cable hold-down with #2 phillips head screwdriver.



Step 5

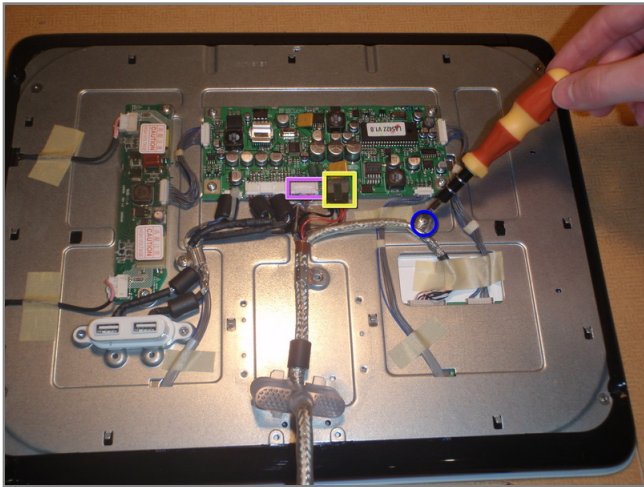
- Remove the screw at the bottom of the plastic bracket, using #2 phillips head screwdriver.
- Pull the plastic bracket free.
- Note the plastic pegs lining the bracket up with the monitor.





Step 6

- Remove tape holding down the white connector to the LCD main board.



Step 7

- With tape removed, the connections on the LCD main board can be disconnected.
 - First, remove the single hold-down using the philips head screwdriver.
- Now locate the three connections the main cable makes with the monitor. Two are on the LCD Main Board and one other to the side.
 - ☒ Disconnect the white connector to the LCD main board by gently lifting tab with small pry tool and pulling out.
 - The tabs can easily break off, be extra careful

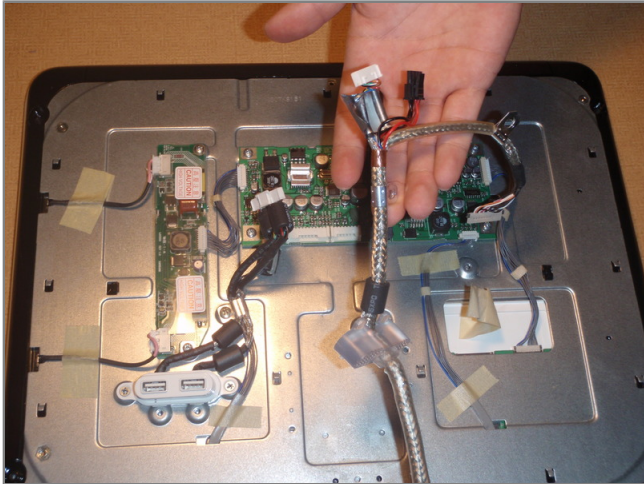


- Disconnect the black connector to the LCD main board by pressing the tab and pulling out.



Step 8

- Now remove the connection not on the LCD Main Board by pulling back the tape holding the wires down first.
 - Remove the connector by hand.



Step 9

- Finally, the main cable can be replaced by pulling the old cable away and repeating the previous steps in reverse with a new, working main cable.