



Repairing Apple Studio Display M2454 LCD Main Board

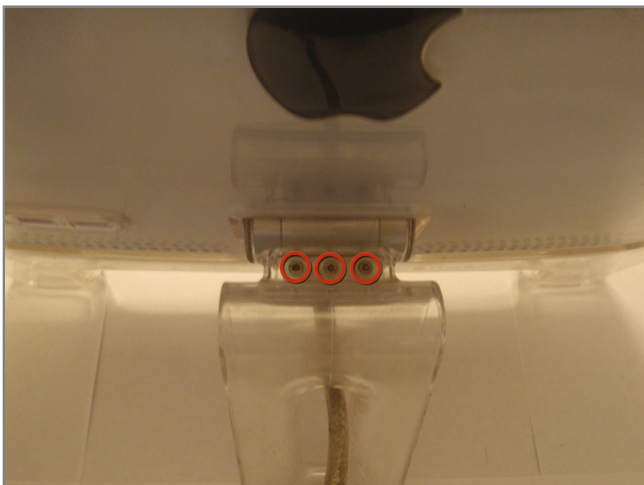
Tools used in this guide

- [2mm Hex Screwdriver](#)
- [Phillips #2 Screwdriver](#)



Step 1 - LCD Main Board

- Locate the four hex head screws located on the corners of the back panel.
 - Remove the screws with a 2mm hex screwdriver.



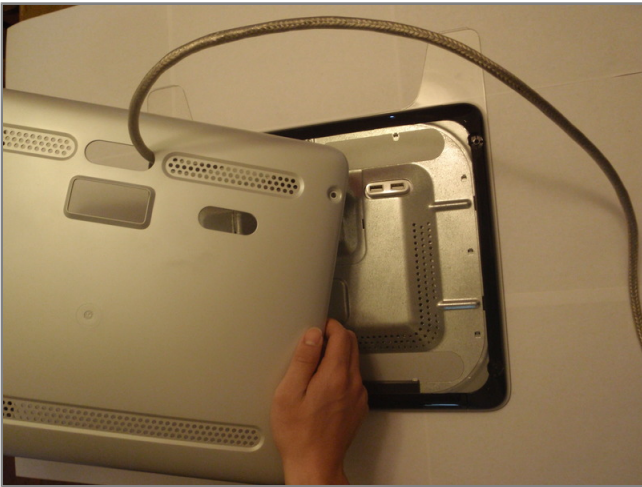
Step 2

- Locate the three 2mm hex screws located on the back stand of the monitor.
 - These screws must be removed with the 2mm hex screwdriver in order for the back panel to be removed.



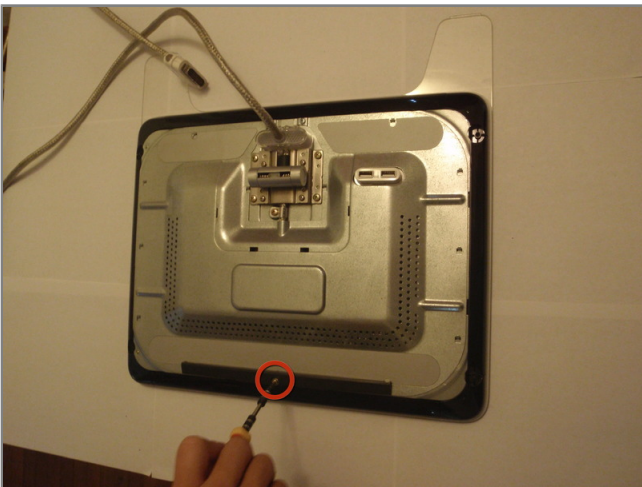
Step 3

- Pull the clear back panel cover off.
- Be sure to feed the cable through the back panel so no damage occurs.



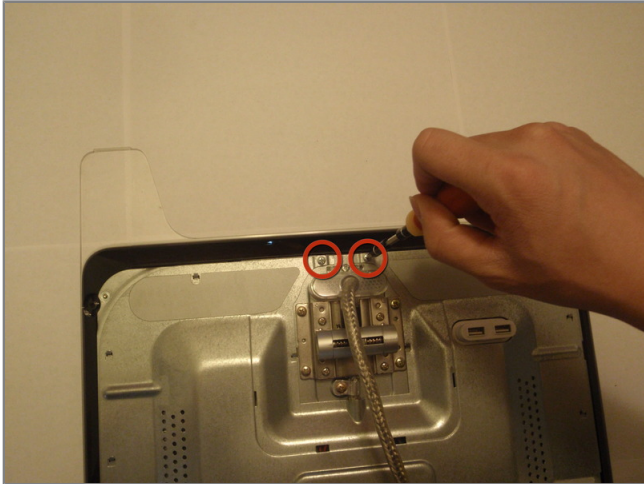
Step 4

- Now remove the back panel under the clear cover.
- Again, feed the cable through the panel so no damage occurs.



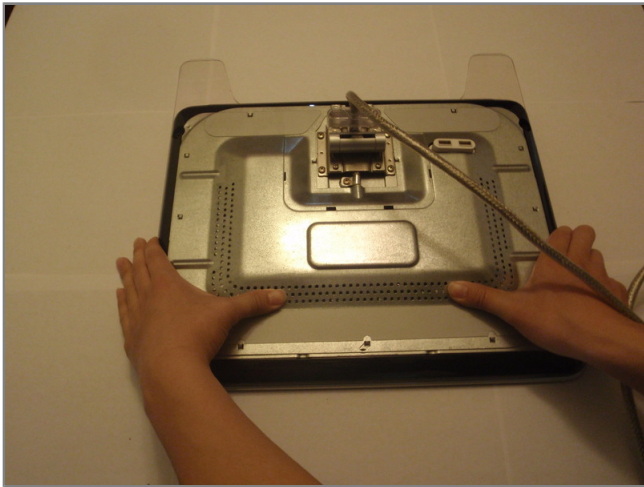
Step 5

- Remove the Phillips head screw holding the back panel spacer with the Phillips head screwdriver.



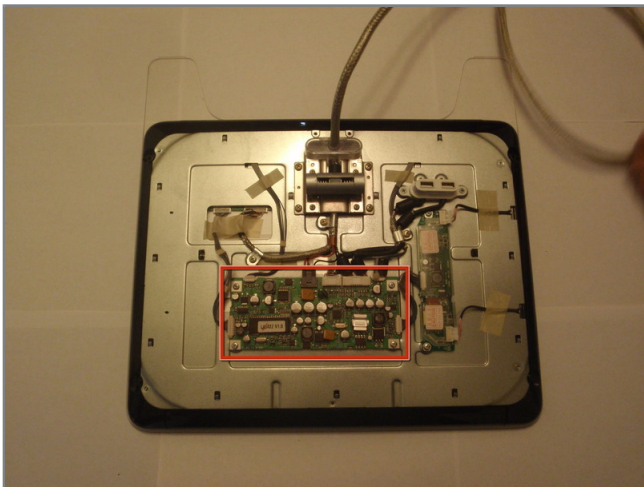
Step 6

- Remove the two Phillips head screws near the cable attachment with the Phillips head screwdriver.



Step 7

- To remove the metal plate covering the circuitry you need to push the cover towards the base of the monitor.
- If done correctly the tabs holding the plate should be detached and the plate will easily pop off.



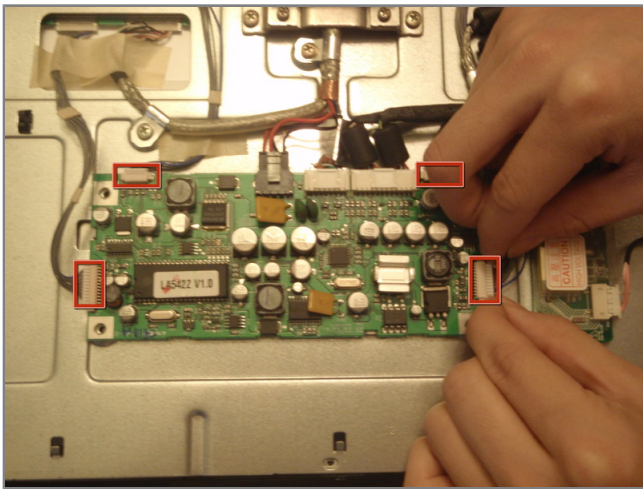
Step 8

- Now that the circuitry is exposed the boards can be seen and replaced.
- The LCD Main Board is the largest board in the center of the device with seven external connections.



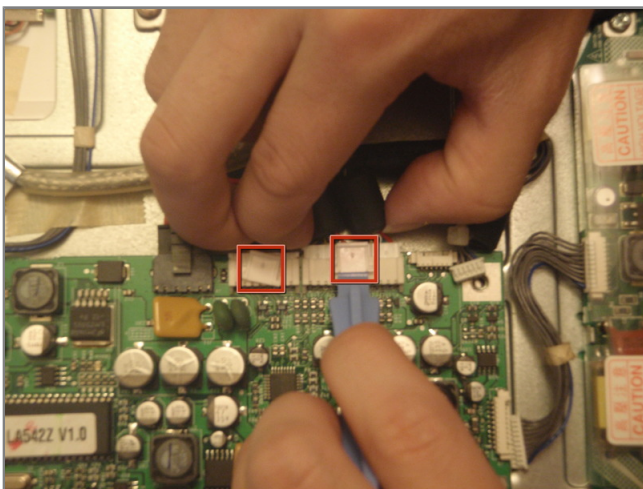
Step 9

- Locate the four phillips head screws on the corners of the board.
- Using the phillips head screwdriver, remove the four screws holding the board to the monitor.



Step 10

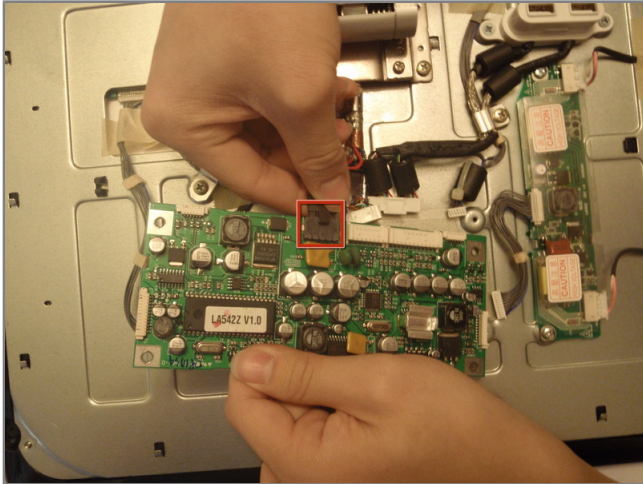
- Remove the four braided connections simply by pushing the side of the connectors in and pull out.



Step 11

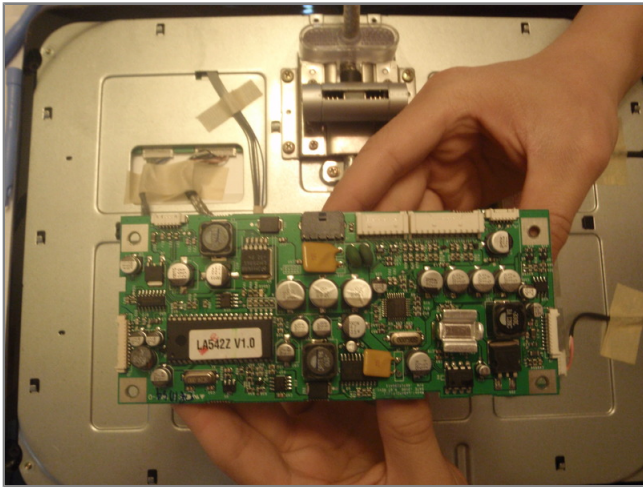
- Remove the other two connectors by raising the tab on each either by hand or using a flat ended tool as shown.
- Then gently pull away from the board to release tabs.
- The tabs can easily break off, be extra careful.





Step 12

- Remove the final black connector by pressing down on the back of the tab on the connector and then pull away from the board.
- Be careful when holding onto the board while removing this connector or you risk pulling the board away too quickly and damaging the connector.



Step 13

- With all the connectors removed the board can be lifted away.
- Now the new board can be attached by following the previous steps in reverse.