



# Repairing Apple Studio Display M2454 CCFL Inverter

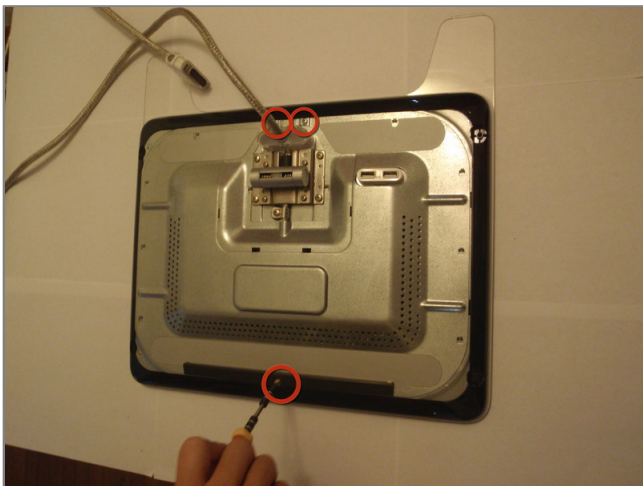
## Tools used in this guide

- [2mm Hex Screwdriver](#)
- [Phillips #2 Screwdriver](#)



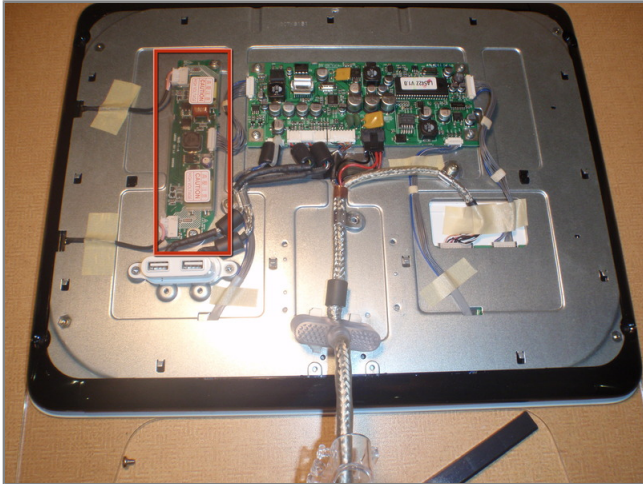
## Step 1 - CCFL Inverter

- First the back panels must be removed from the monitor.
- First remove the three 2mm hex screws from the top of the monitors stand.
- Then, locate and remove the four 2mm hex screws on the corners of the back panel and remove them with the 2mm hex screwdriver.
- Finally, the back panels can be removed by pulling the main cable through the opening and sliding the panels away.



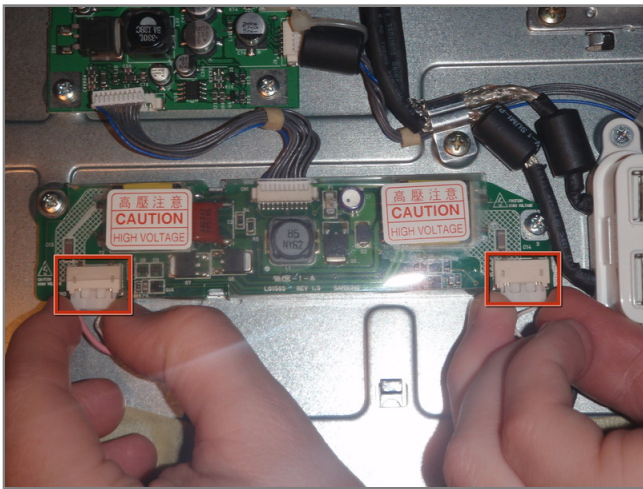
## Step 2

- Remove the metal backing.
  - Remove the single screw at the top and the two screws at the bottom of the monitor with #2 philips head screwdriver.
- With the screws removed, push metal backing toward back of monitor to release its clips and pull away.



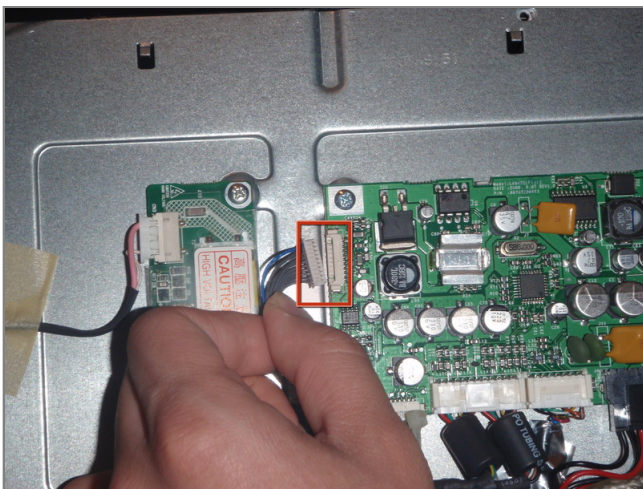
### Step 3

- Now, with the circuitry exposed, locate the CCFL inverter board.
  - Look for the smaller of the two circuit boards with two wires and a ribbon cable running out of it.



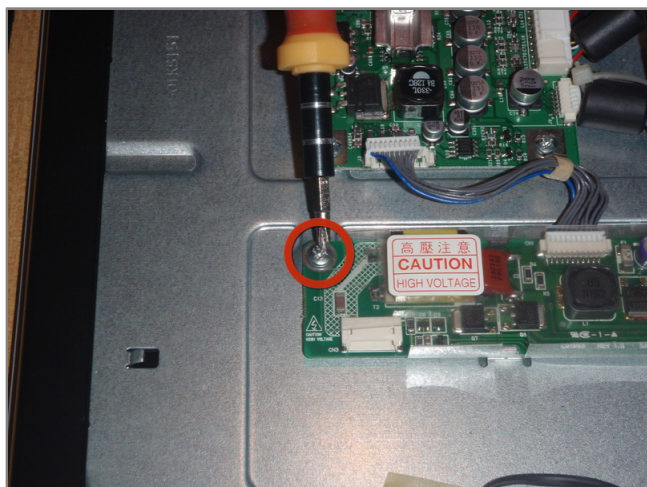
### Step 4

- Now the connections from the board need to be removed.
  - Remove the two cables on the left side of the board, using a pin to insert into the two small holes and then pull out.
  - This step may be easier with two people.
  - Do not insert pin in hole with force or you risk damaging the connector.



### Step 5

- Remove the ribbon cable on the right side of board by pulling it away from the LCD main board with hand.



## Step 6

- Remove the top philips head screws holding the board to the monitor with #2 philips head screwdriver.



## Step 7

- Remove the bottom philips head screw and pull the CCFL Inverter board away from monitor.
- To replace this part with a new one, simply follow these directions in reverse using the new board.