

Joybook S52 System Disassembly Description

1. Description

Joybook S52 Disassembly can be divided into three main parts. To be more efficient, it is better to get to know more about disassembly process.

You need the following tools:

- Wiha PicoFinish Slotted Screwdriver (Professional Suggestion)



260P

Slotted screwdriver.

- Crisscross screwdriver, 0x50mm (十字螺絲起子, 0x50mm)
- Crisscross screwdriver, 1x60mm (十字螺絲起子, 1x60mm)
- Flat screwdriver (一字螺絲起子)
- Snipe nose pliers
- Tweezers
- Soft Cushion
- Screws classification box
- Golden type (金色膠帶)
- Screw Torque Document

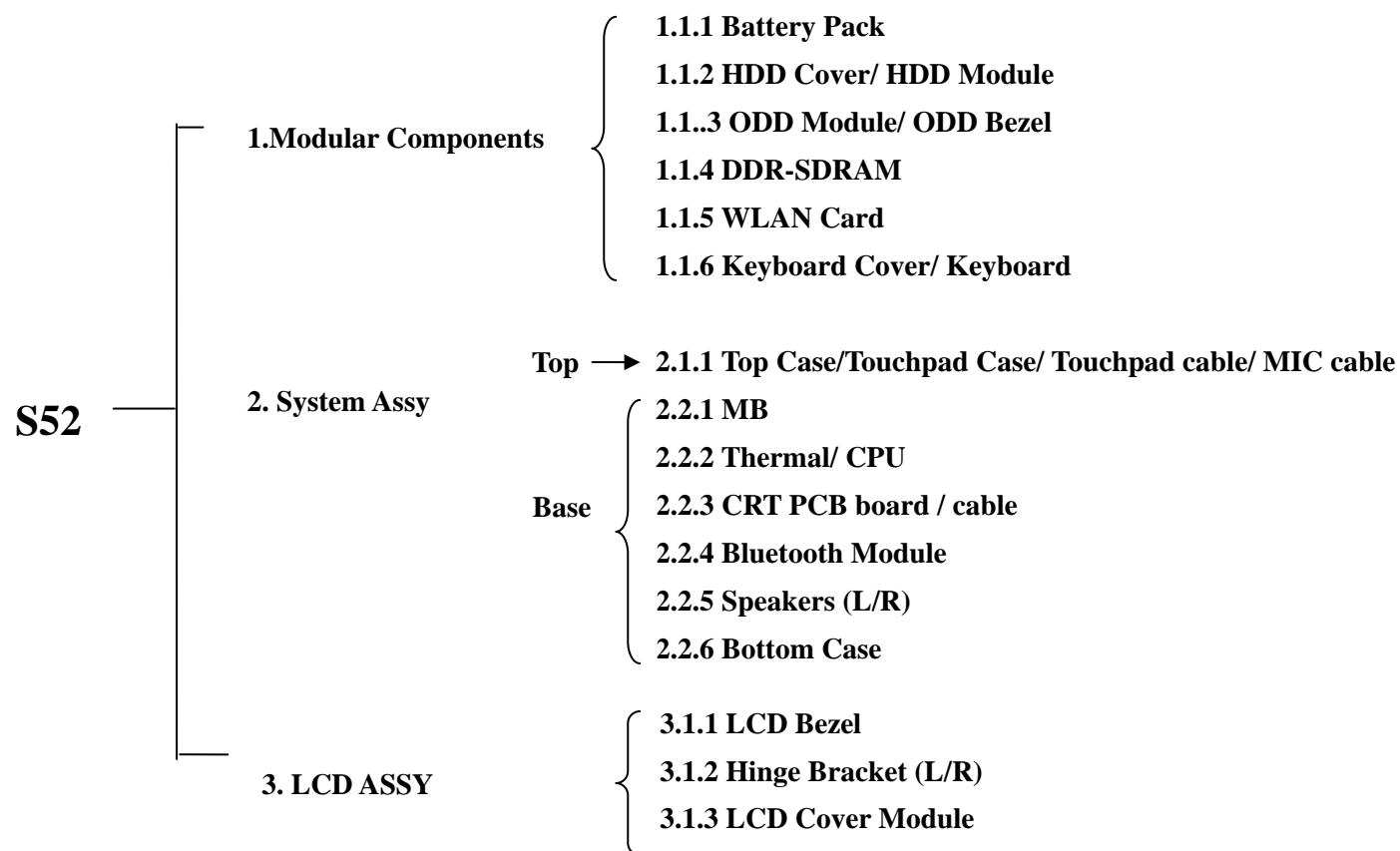
● Note :

1. Please turn off Joybook and remove battery before disassemble.
2. The screw for different components may vary with size.
3. During disassemble process, collect the screws together with correspondent parts for avoid mismatch when assemble.
4. Put a soft pad between repair desk and Joybook to prevent scratch during repair.
5. Void to scrape machine appearance during disassembly.

2. System Disassembly

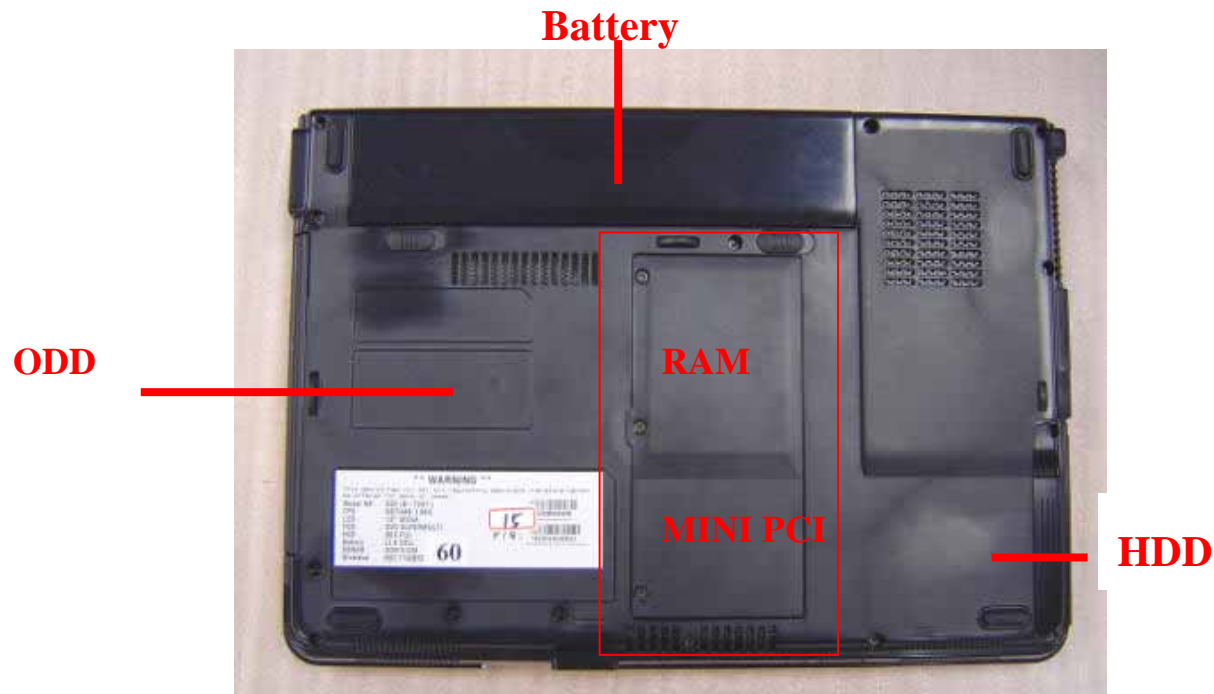
The section discusses at length each major component for disassembly/reassembly and show corresponding illustrations. Use another document “Disassembly Flow Chart” for auxiliary to determine the disassembly sequence for removing components from the notebook.

NOTE: Before you start to install/replace these modules, disconnect all peripheral devices and make sure the notebook is not turned on or connected to AC power.



1. Modular Components

You can easily disassemble “Modular components” (as below indication) no need to disassemble main system.



1.1.1 Battery Pack

Disassembly

1. Carefully put the notebook upside down.
2. Pull the battery pack out of the compartment (②) while sliding and holding the release lever outwards to the “unlock” ○ position (①). (Figure 2-1)

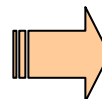
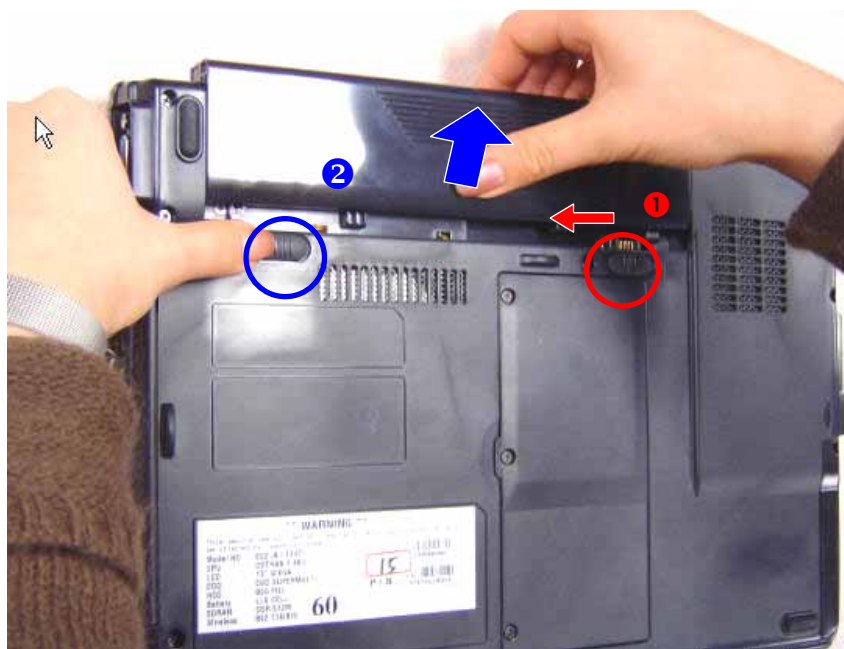


Figure 2-1 Remove the battery pack

1.1.2 HDD Module

Disassembly

1. Carefully put the notebook upside down. And remove the battery pack. (Refer to section 2.2.1 disassembly)
2. Remove 2 *(item 24) screws fastening the HDD compartment cover (Figure 2-2), and lift the HDD cover up. (Figure 2-3).
3. Pull the HDD module right forward from the system.



Figure 2-2 Remove the HDD cover



Figure 2-3 HDD cover

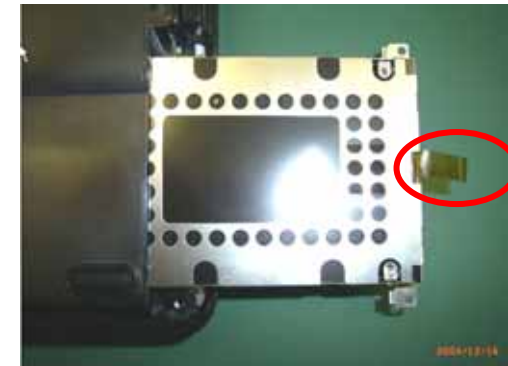


Figure 2-4 Pull the HDD drive out



4. Refer to step3, remove 4 *(item 23) screws to separate the HDD module from the HDD case. (Figure 2-4).

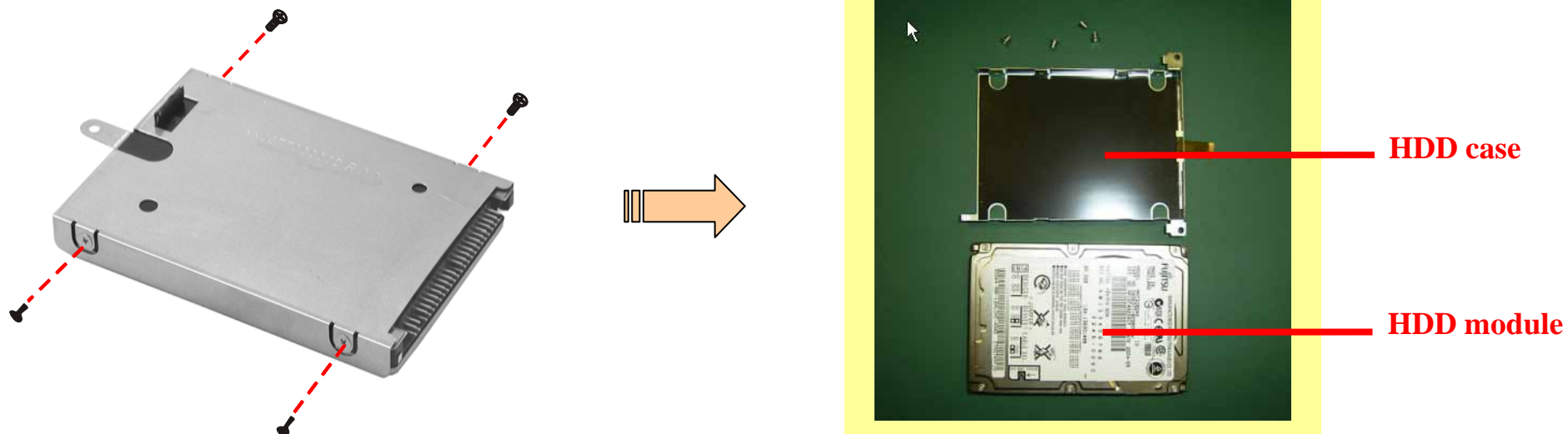


Figure 2-4 Free the HDD drive

1.1.3 ODD Module (Configuration: DVD & CD-RW Combo/ DVD+RW/ DVD Super-Multi)

Disassembly

1. Carefully put the notebook upside down. And remove the battery pack. (Refer to section 2.1.1 disassembly)
2. Put the notebook back to the upright position. **Loosen the 3 screws (1)** to release RAM Door. (Figure 2-5).
3. Then insert a small rod, such as a straightened paper clip, into the drive's manual eject hole and push firmly to release the tray (2). Pull the tray out until fully extended (3), then carefully pull harder to remove the ODD Module. (Figure 2-6)



Figure 2-5 Remove the ODD Module

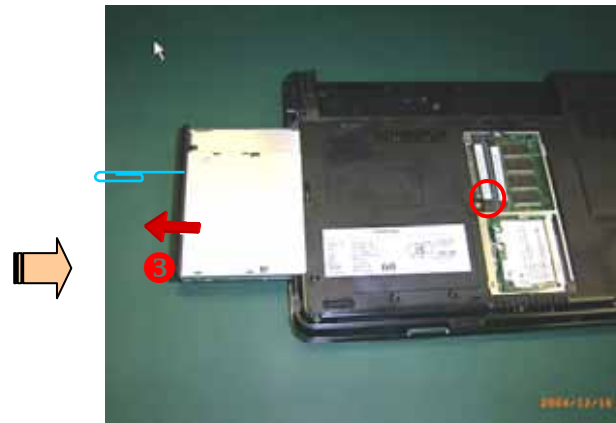


Figure 2-6 Remove the ODD Module



RAM
Door



ODD
Module

ODD Bezel

There are 2 kinds of bezel includes of GBAS (Quanta) and KME (Panasonic).

※How to adjust what kind of your ODD?

KME (Panasonic)



POWER SUPPLY : DCSV
COMPLIES WITH FDA RADIATION PERFORMANCE STANDARDS, 21
Manufactured by **Panasonic** Communications Co., Ltd.
1-62, 4-Chome Minoshima Hakata-Ku Fukuoka, Japan

GBAS (Quanta)



Quanta Storage Inc.
303, SEC 2, NANKAN RD, LUCHU TAOYUAN HSIEN, TAIWAN

KME Disassembly

1. Refer to section 2.1.3 (2) step.
2. Remove **3 screws (item 25)** as the indication. (Figure 2-7)



Figure 2-7 Remove 3 screws

GBAS Disassembly

1. Turn the ODD to leftside. And push forward the bezel with tweezers lightly as the indication to release it. (Figure 2-8)



Figure 2-8 push with tweezers



1.1.4 DDR-SDRAM

Disassembly

1. Refer to section 2.1.3 disassembly (①) step to remove Door. (Figure 2-9)
2. Pull the retaining clips outwards (①) and remove the DDR-SDRAM from the socket (②).(Figure 2-10)



Figure 2-9 Remove the cover first

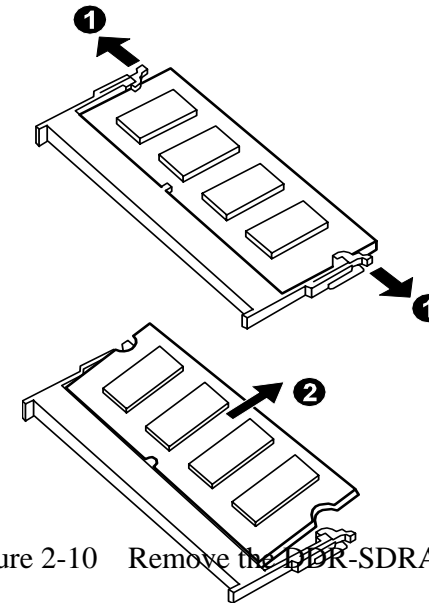


Figure 2-10 Remove the DDR-SDRAM

Reassembly

To install the DDR, match the DDR's notched part with the socket's projected part and firmly insert the DDR into the socket at 20-degree angle. Then push down until the retaining clips lock the DDR into position.

1.1.5 Wireless Card

Disassembly

1. Refer to section 2.1.3 disassembly (1) step to remove the door. (Figure 2-11)
2. Disconnect 2 wireless card's antennae first. Then pull the retaining clips outwards. (Figure 2-12)



Figure 2-11 Remove the RAM Door first

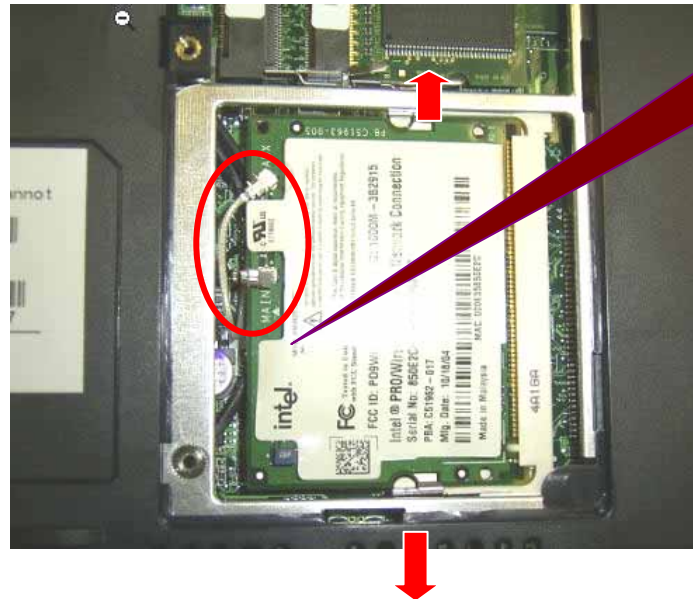


Figure 2-12 Remove wireless card

Disconnect Antenna

1. White connect to "AUX"
2. Black connect to "Main"







WLAN Module

1.1.6 Keyboard Cover/ Keyboard

Disassembly

1. Refer to 2.1.1.section to remove Battery Pack first.
2. Remove **3 / 1 / 1 screws** (Figure 2-13)
3. Reverse the machine to the rear side. Then remove **2 screws**.
4. Open the LCD to level plane. Slightly lift up the keyboard cover. (Figure 2-14)

***** Screw type *****

-  3screw (item 18)
-  1 screw (item 19)
-  1 screw (item 17)
-  2 screw (item 20.21)

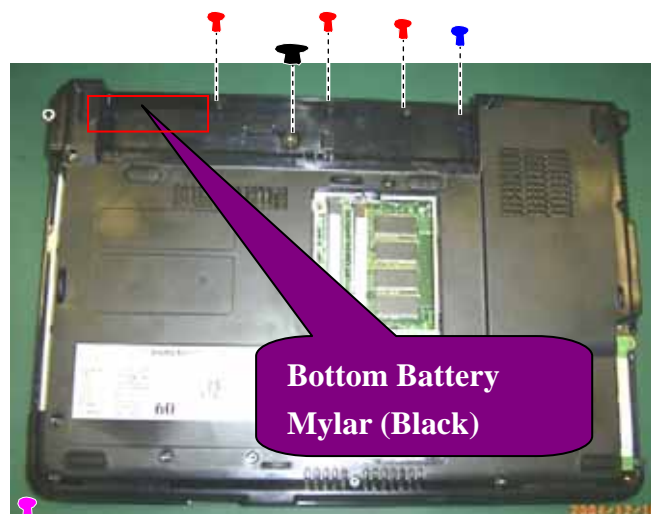


Figure 2-13 Remove 7 screws



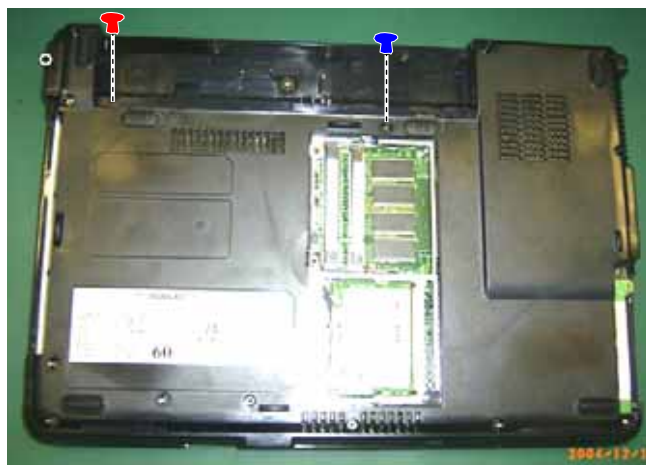
Figure2-14 Lift up the K/B Cover

Keyboard Cover



side down to remove 2 screws

Remove 1 / 1 / 1 screws and lift up the K/B
Then disconnect the cable to release keyboard. (Figure 2-16)



*****Screw type *****




-  1 screw (item 16)
-  1 screw (item 15)
-  1 screw (item 14)



Figure 2-15 remove 3 screws and lift up the K/B

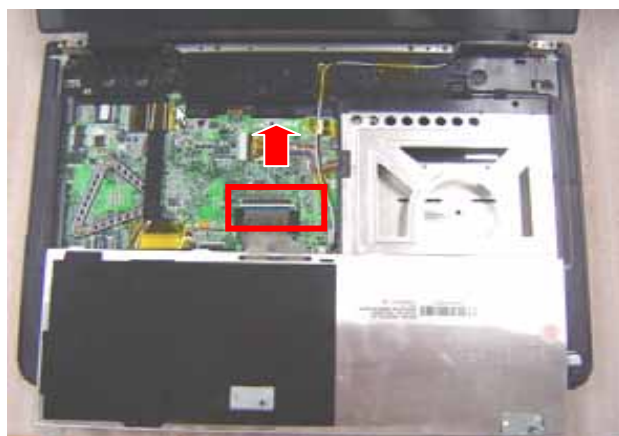


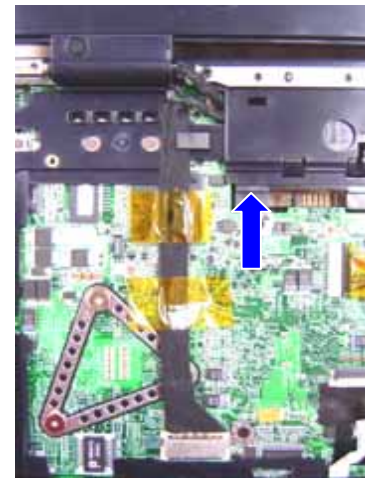
Figure 2-16 disconnect the cable and detach the keyboard

Separate (2)System ASSY & (3)LCD Module

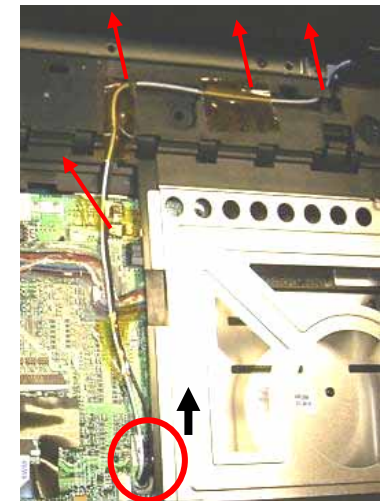
1. Refer to 1.1.5 Section to disconnect wireless antenna first.
2. Open the LCD cover to level plane. And disconnect 4 cables (LCD Cable/ VGA Cable/ Touchpad Cable/ Antenna) from the motherboard. Then remove **4 *(item 13)** on hinges. (Figure 2-17)



① LCD Cable



② Lift up Antenna



③ Touch Pad Cable



④ VGA Cable

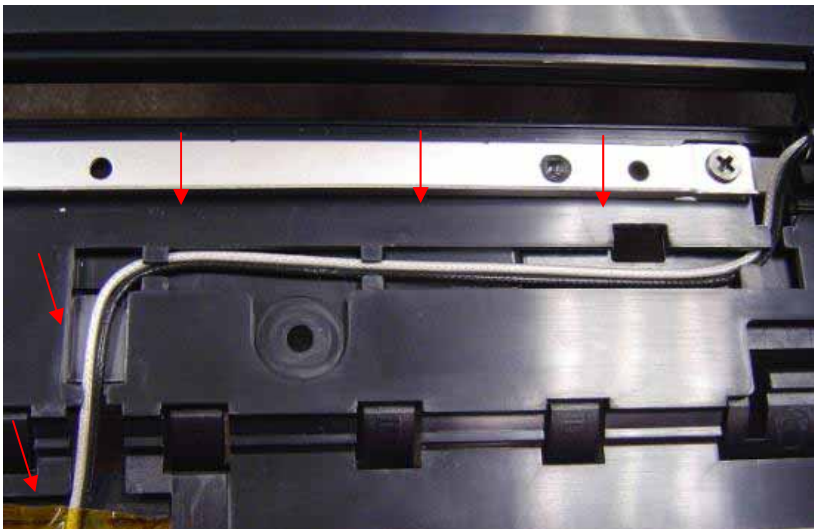


Figure 2-17 Disconnect 4 cables and remove two hinge covers with screwdriver

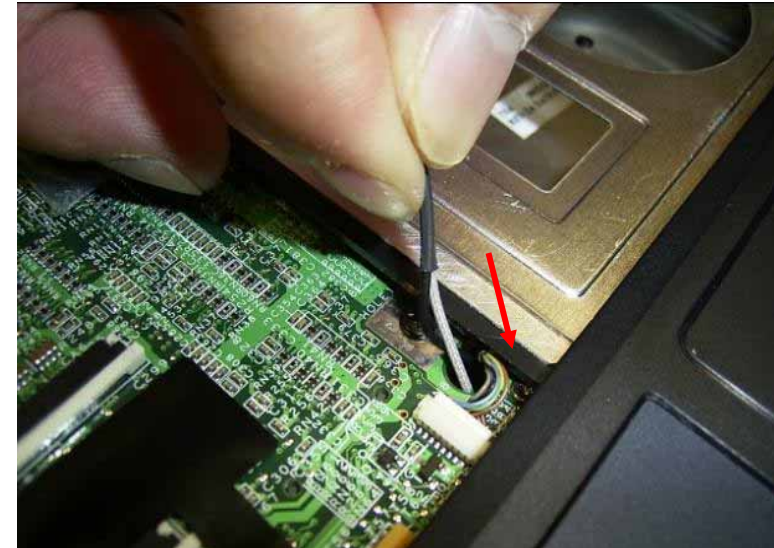
Antenna Assembly Notice

Please remember let 2 antenna cables to be “parallel” and put into the trench as the picture then fix it with golden type.

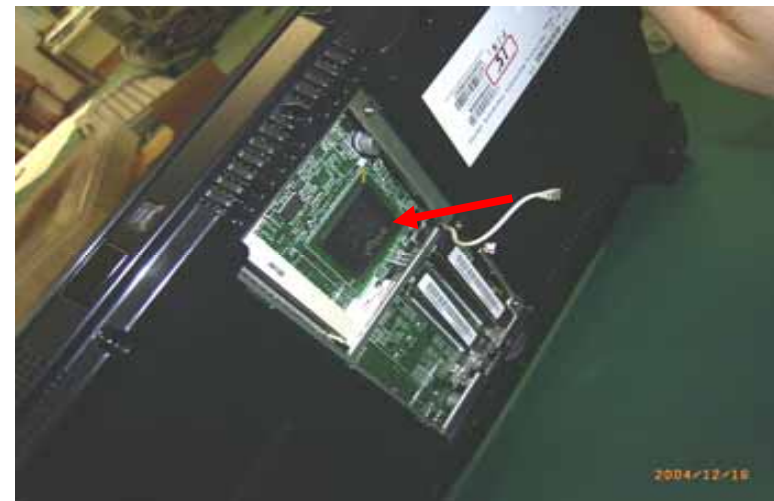
If not do so, it may will make some issue.



2. Put the antenna into the hole of motherboard.



3. Pass through to connect to WLAN Card.



2.1 Top Case (with touchpad module & MIC cable)

1. Refer to section 2.1.6 to disassemble keyboard first.
2. Put the notebook upside down. Remove **9*(item7. 8) / 2*(item 2)** screws that secure the bottom case. Remove **2 * (item 21)** screws in the rear of the notebook.. (Figure 2-18)
Then lift the bottom case from the rack and disconnect the MIC cable of top case (Figure 2-19)

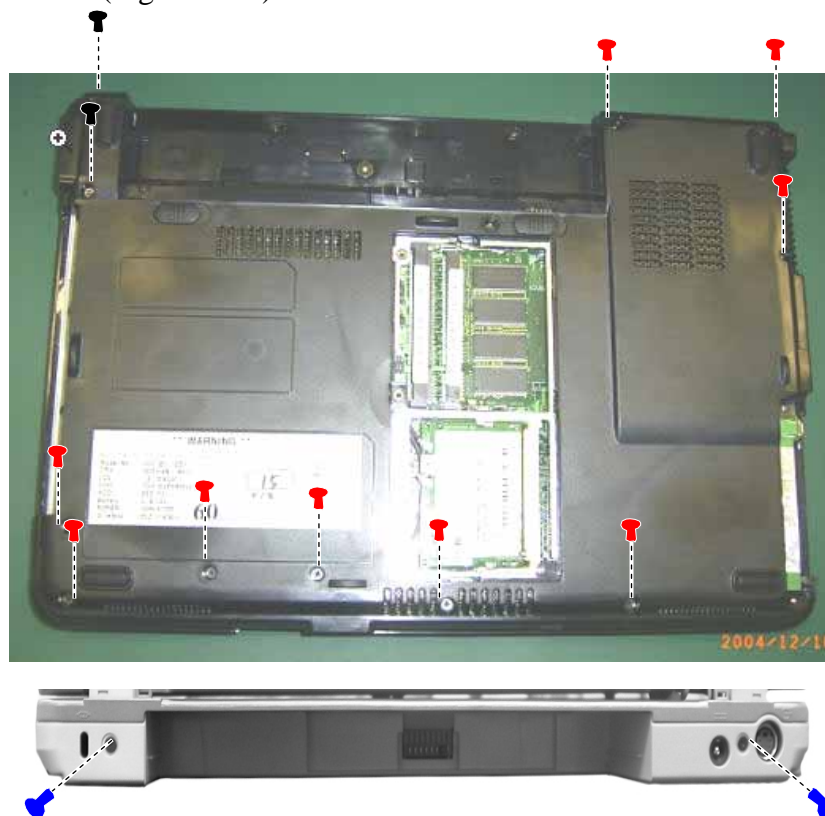


Figure 2-18 Remove 13 screws and lift up the case

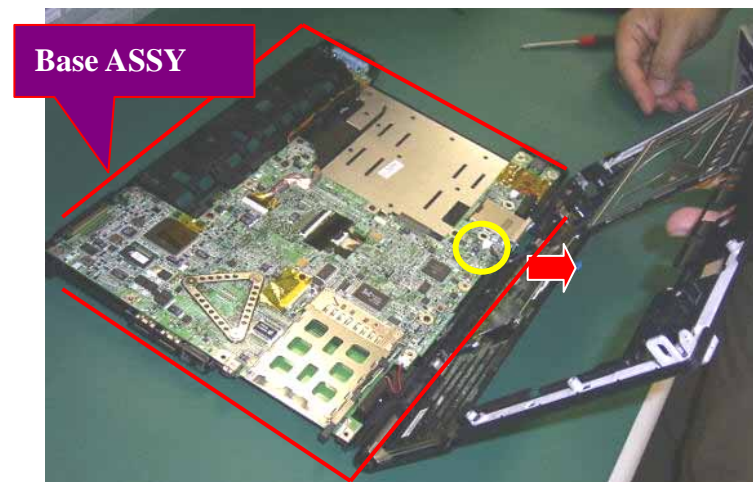
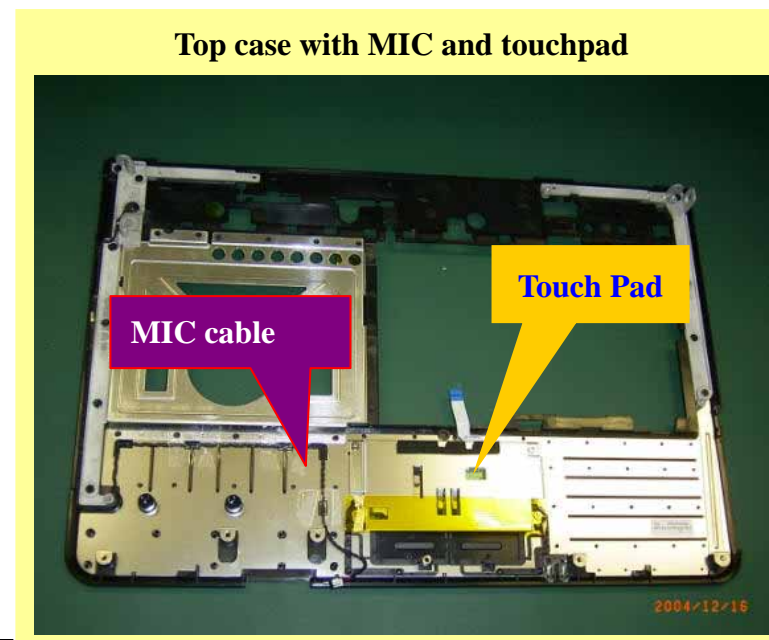


Figure 2-19 disconnect MIC cable



How to disassemble “Touchpad” & “MIC cable” from Top Case?

1. Remove the **upper 2* (item 26)**; **lower 2* (item 27)** as blue circle of the top case to remove touchpad. Then you can disconnect the touch pad cable (②).
2. Remove the “MIC cable” refer to red arrow indication. (Figure 2-20)

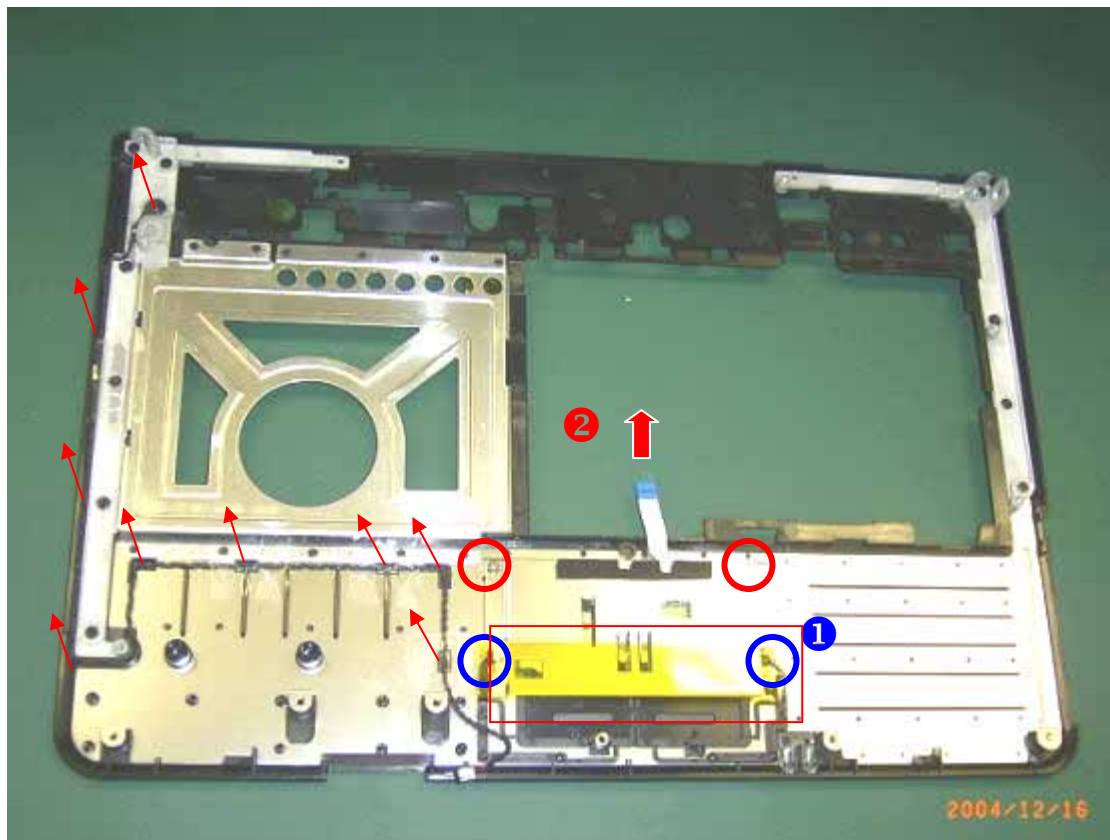
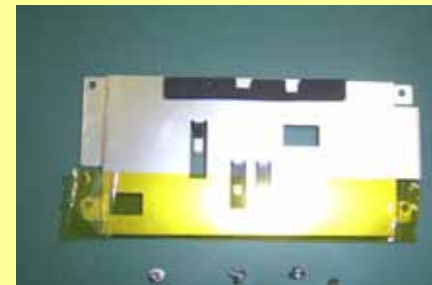


Figure 2-20 remove MIC cable & Touchpad case/ cable

Touchpad case



Touchpad cable



MIC cable



2.2 Base ASSY

2.2.1 Mother Board

1. Refer to section 2.2.1
2. To **disconnect 3 cable** : L/R speaker cable & bluetooth cable as indication. (Figure 2-21)
3. Remove **4* (item 5) / 2* (item 4)** screws. Then Lift up the mother board carefully. (Figure 2-22)

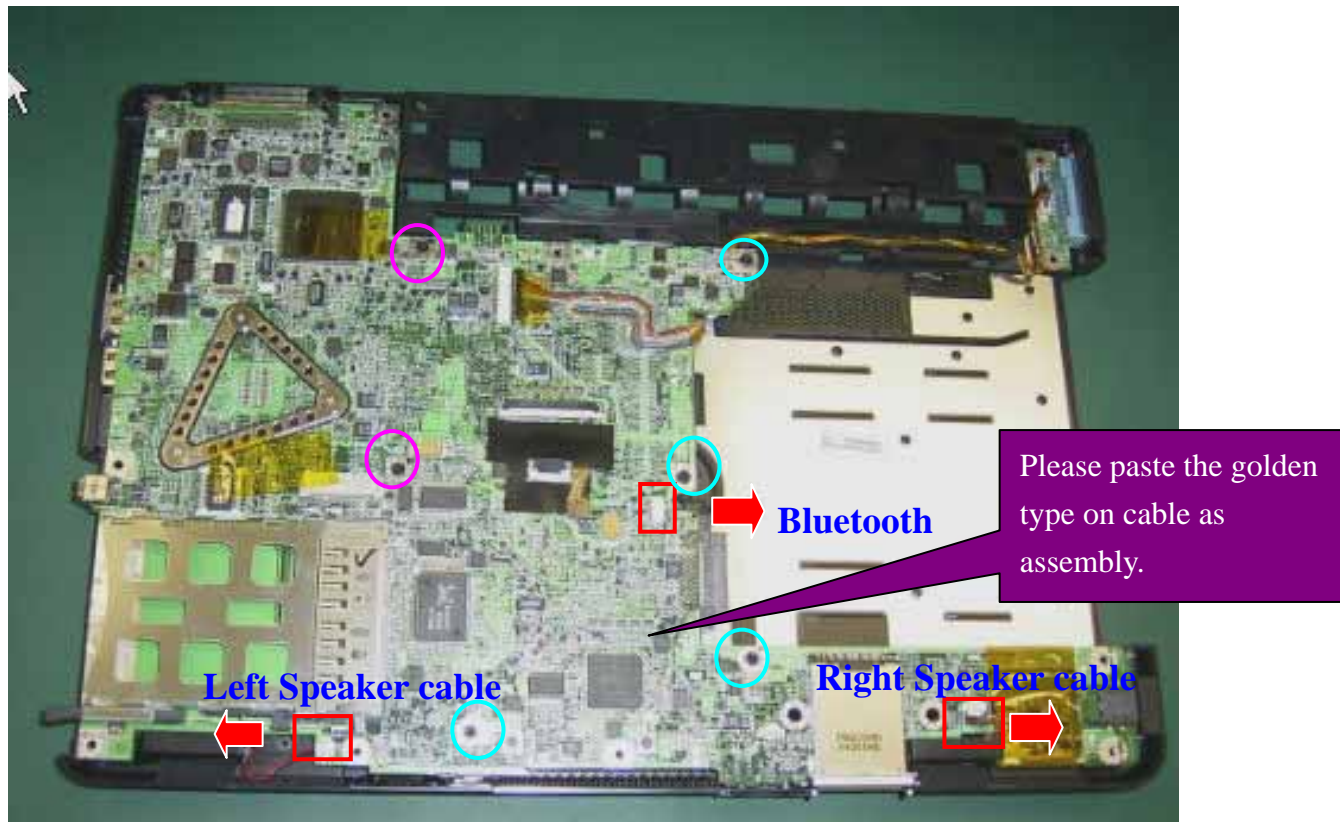


Figure 2-22 Lift up the M/B

2.2.2 Thermal Module/ CPU

1. Reverse the mother board and loosen **3 *** (item 1) and disconnect 1 cable.

Then can release the thermal module. (Figure 2-23)

Please secure the thermal by the sequence as 1,2,3 indication on the thermal interface.

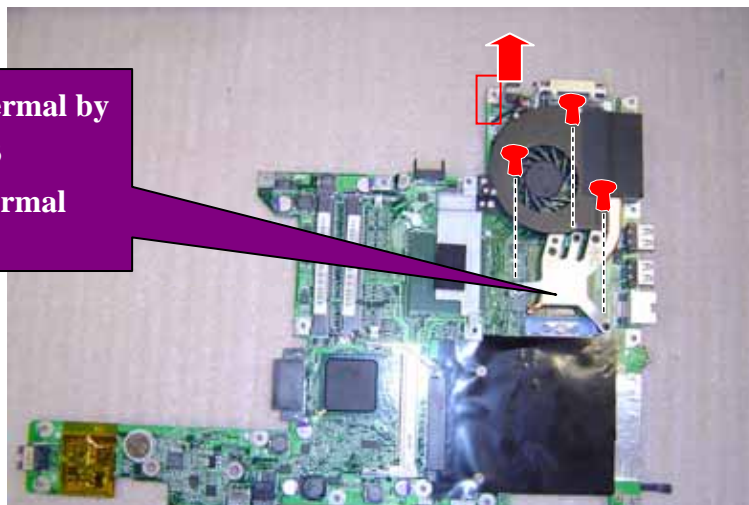
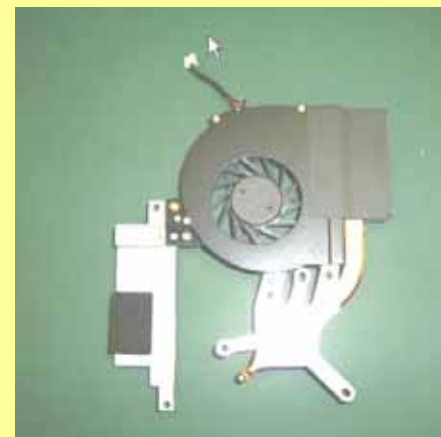


Figure 2-23 release the thermal

Thermal



2. Loosen the screw by a flat screw driver, upraise the CPU socket to unlock the CPU. (Figure 2-24)

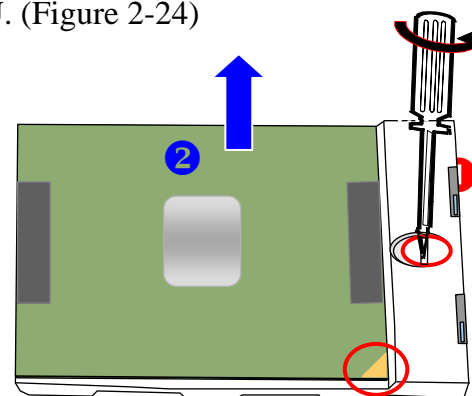
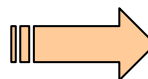
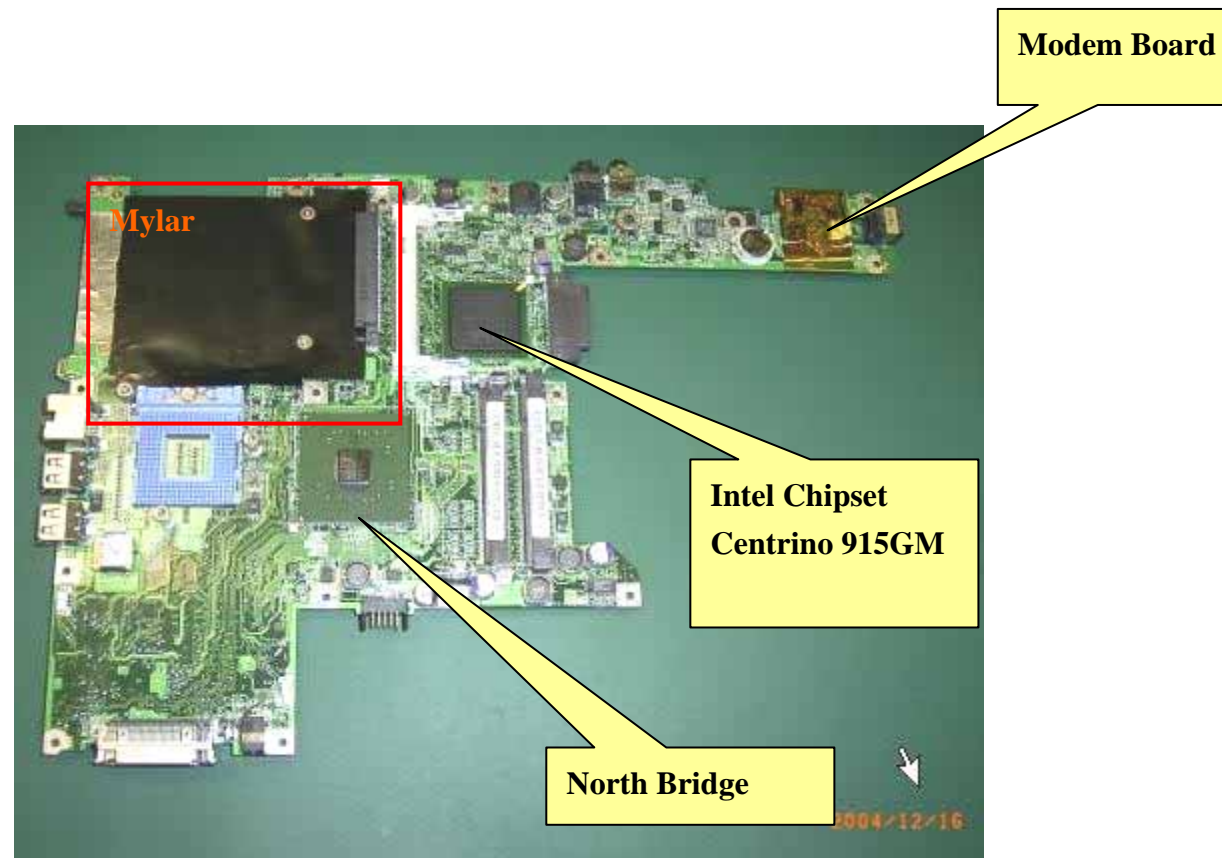


Figure 2-24 detach the CPU socket

Refer to 2.2.2 remove thermal and CPU of the M/B. That it will be the M/B Unit.



How to disassemble PCMCIA from M/B?

1. Remove the 2 *(item 28) screws that secure the PCMCIA then reverse M/B to another side. (Figure 2-25)
2. Remove PCMCIA carefully refer to red indication with flat screwdriver. (Figure 2-26)

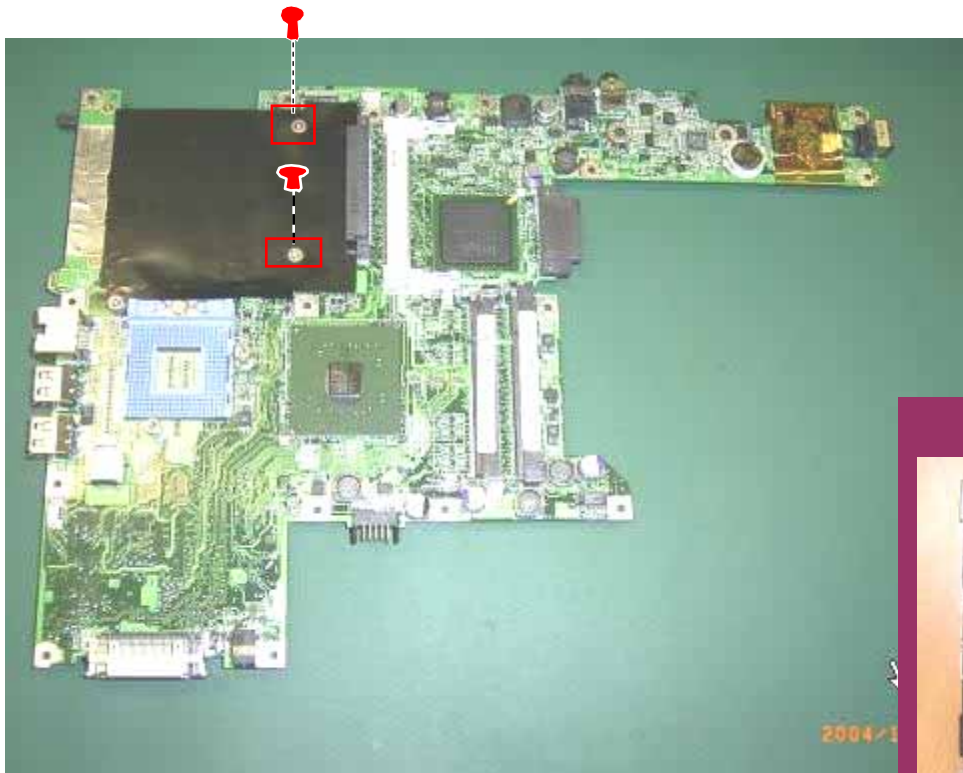
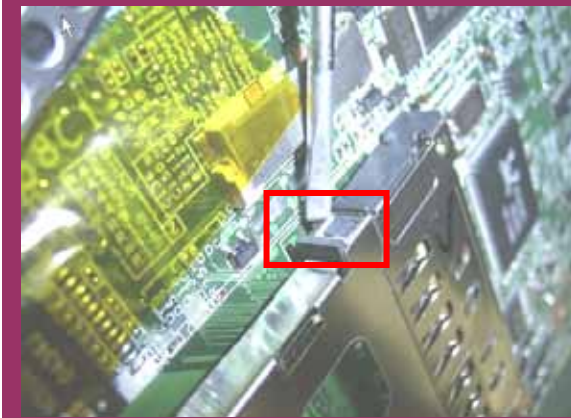


Figure2-25 remove 2 screws

Figure 2-26 push from inner to outer with flat screwdriver as indication



Disassembly PCMCIA Notice



Be careful not to push the HDD connector's pin too strongly.

2.2.3 CRT PCB Module

Disassembly

1. Refer to 2.2.3 to remove M/B.
2. Remove **1*(item 3) / 2 hex nuts (item 9)** and disconnect the cable as the blue arrow to remove VGA cable and VGA board.
(Figure 2-26)

Assembly Notice:

Please arrange the cable by the trench road of the case as picture.

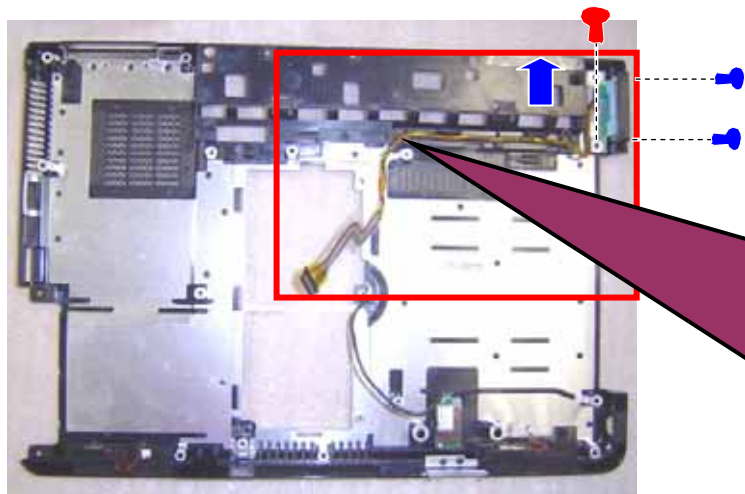
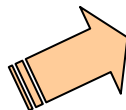
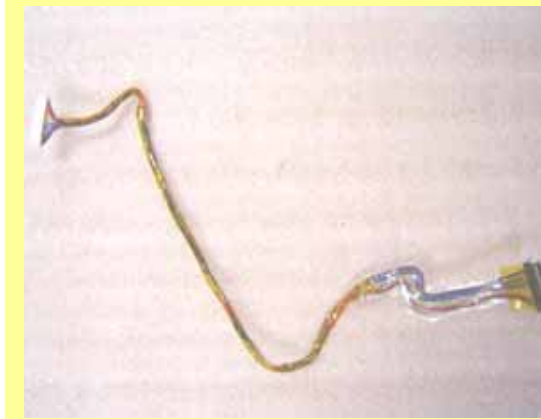
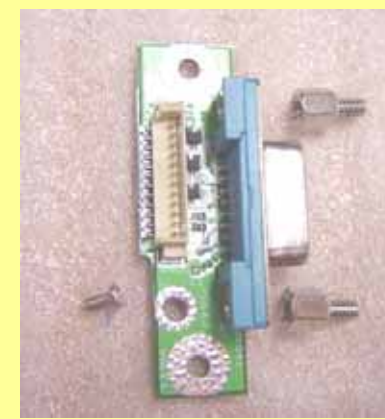


Figure 2-26 Remove VGA module

CRT Cable



CRT PCB



CRT Cable Assembly Notice:



2.2.4 Bluetooth Module

Disassembly

1. Refer to 2.2.3 to remove M/B.
2. Remove 2 * (item 2) then detach Bluetooth Module. (Figure 2-26)

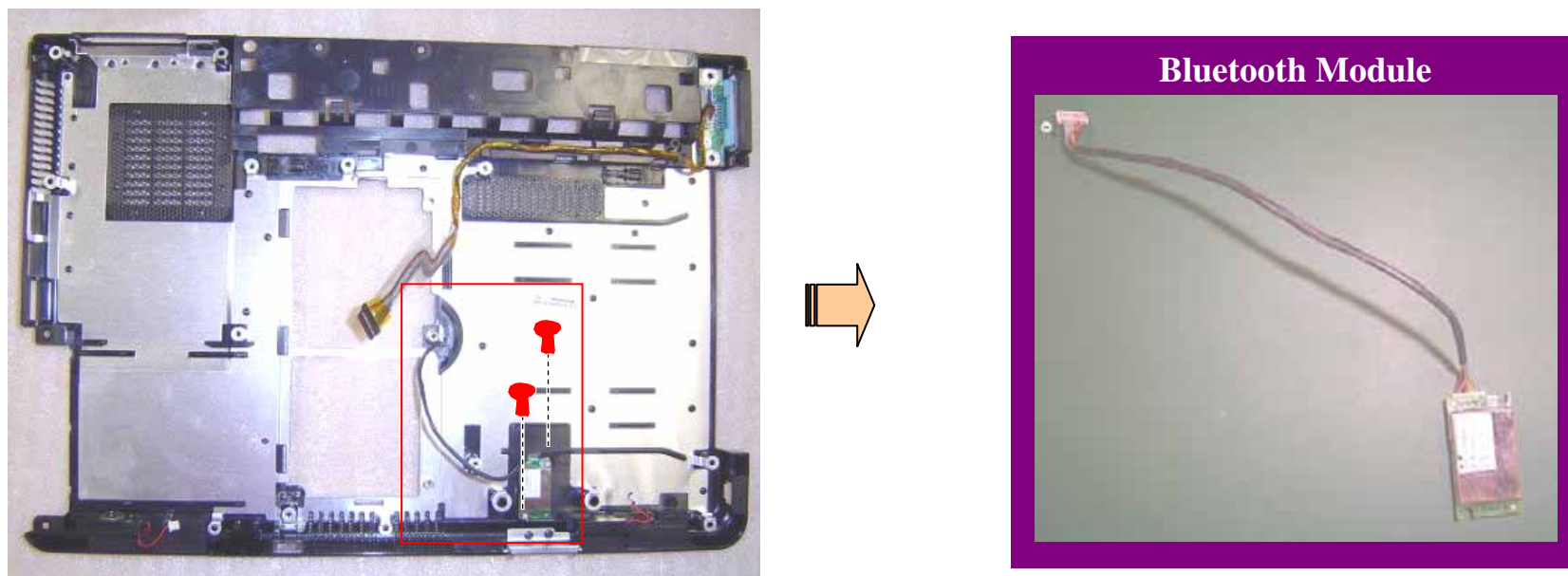


Figure 2-26 remove 2 screws to release bluetooth module

2.2.5 Speakers

Disassembly

1. Refer to 2.2.3 to remove M/B.
2. Remove **2* (item 29)** screws then detach the right and left speakers. (Figure 2-27)

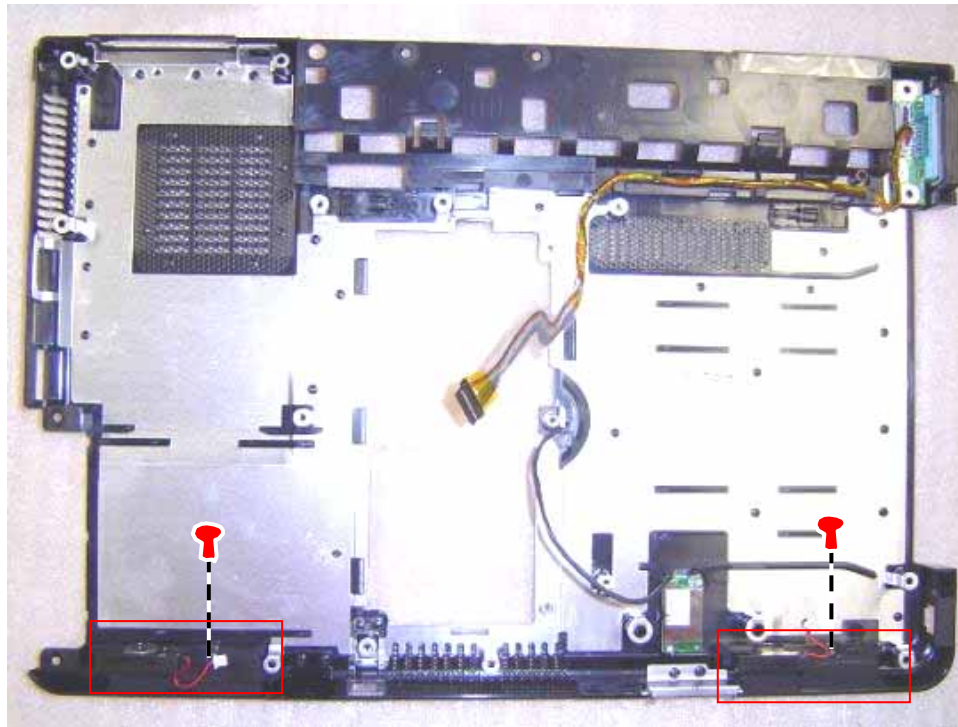
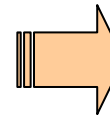
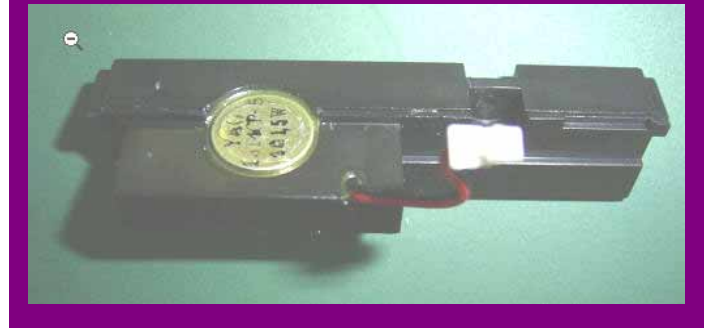


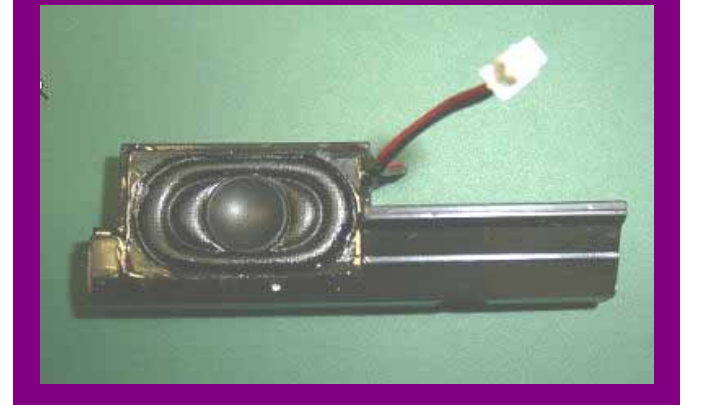
Figure 2-27 remove 2 screws to release speakers



Right Speaker



Left Speaker



2.2.6 Bottom Case

1. Refer to section 2.2.4, 2.2.5, 2.2.6 to remove all components on Bottom case.

You will get bottom case. (Figure 2-28)

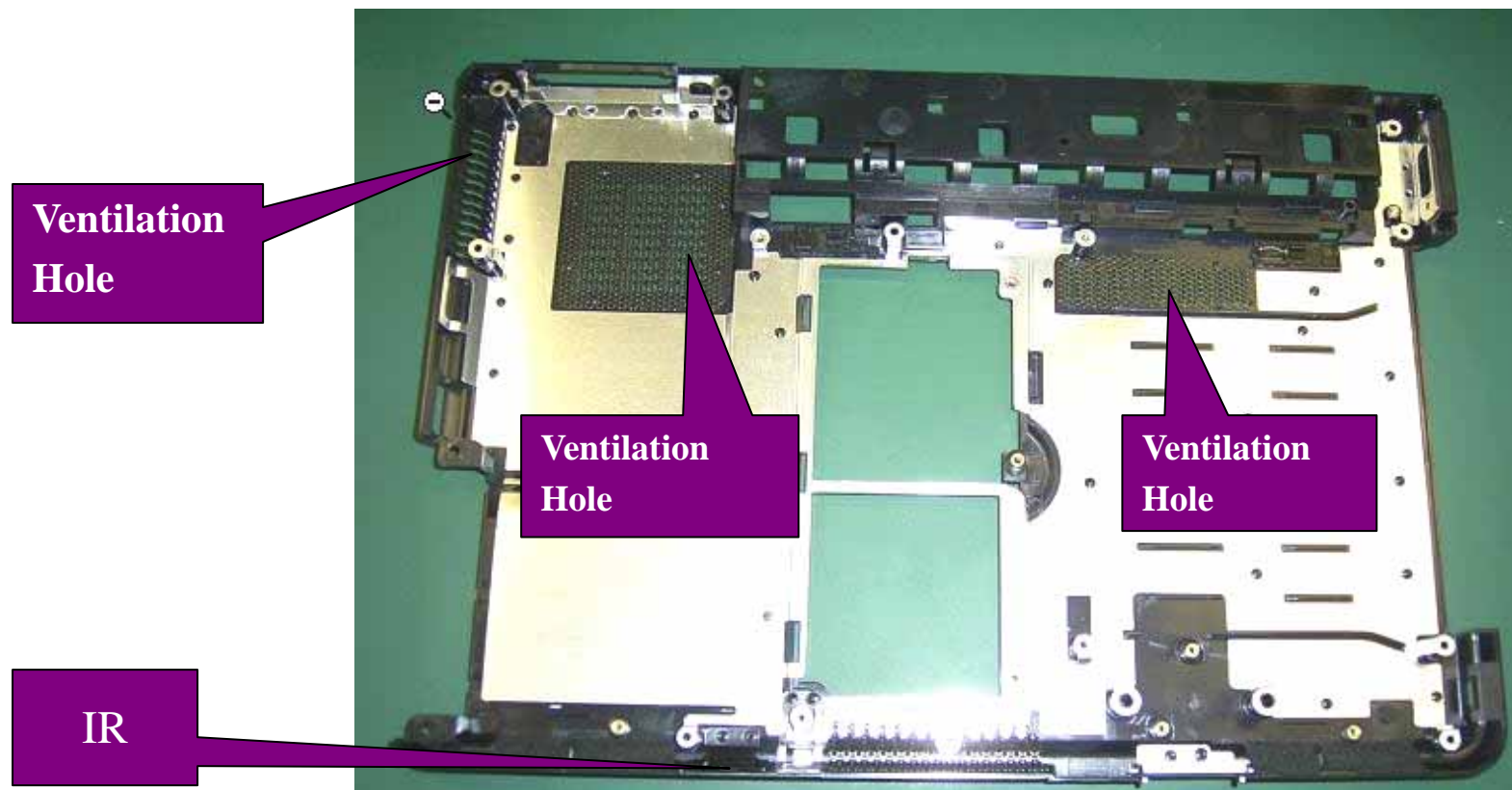


Figure 2-28 S52 bottom case

3. LCD Module

1. Refer to section 2.1.6 to separate LCD module. (Figure 2-29)



Figure 2-29 S52 LCD Module

3.1.1 LCD Bezel

Disassembly

1. Refer to section 3.1
2. Remove the rubber ○ 7 pads and 7 * (item 12) screws on the corners of the panel. (Figure 2-30)
3. Remove LCD Bezel by hand. (Direction: Inside to outside as indication)

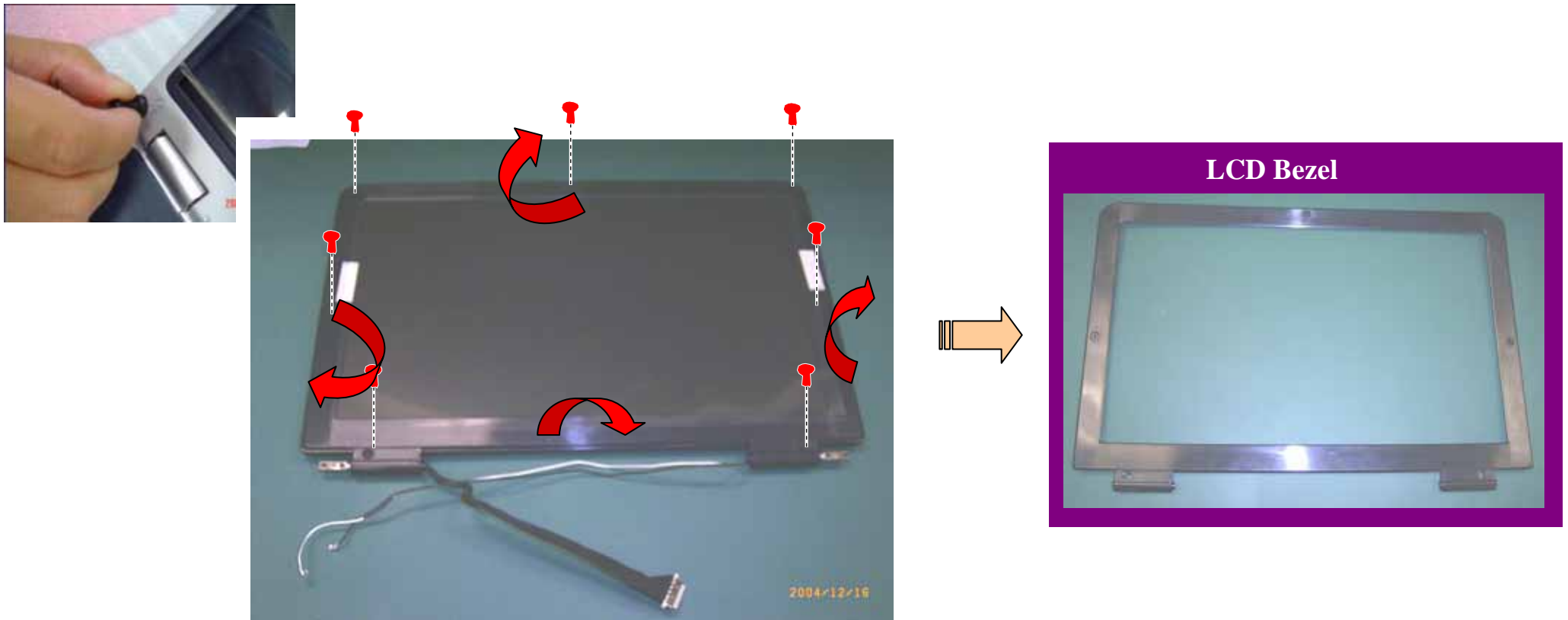


Figure 2-30 remove rubber and screws

3.1.2 LCD Inverter/ Bracket/ Panel/ FFC

Disassembly

1. Remove the **6* (item 11)** screws of LCD panel. (Figure 2-31)
2. **Disconnect 2 cable** from the inverter board to detach inverter. (Figure 2-32)

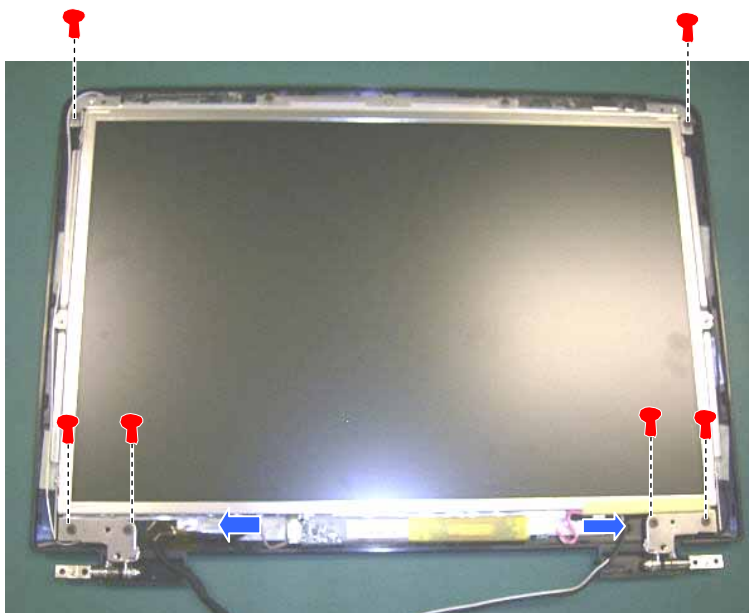


Figure 2-31 remove 6 screws to release LCD assy

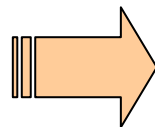


Figure 2-32 LCD Inverter

2. Remove the 4 *(item 10) screws to remove the LCD bracket on side of the LCD panel. (Figure 2-33)



Figure 2-33 LCD Bracket



3. Reverse the LCD panel. To tear open the silver tinfoil and remove LCD FFC. (Figure 2-34)

LCD Panel (front side)

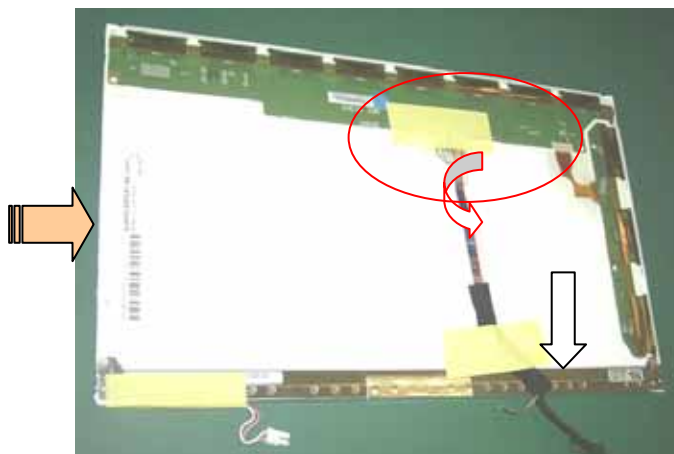


Figure 2-34 LCD FFC



3.1.3 LCD Cover Module

Disassembly

1. Completion of 3.1.1 disassembly section. You can get LCD Cover Module. It includes of Antenna and LCD Support.
(Figure 2-35)

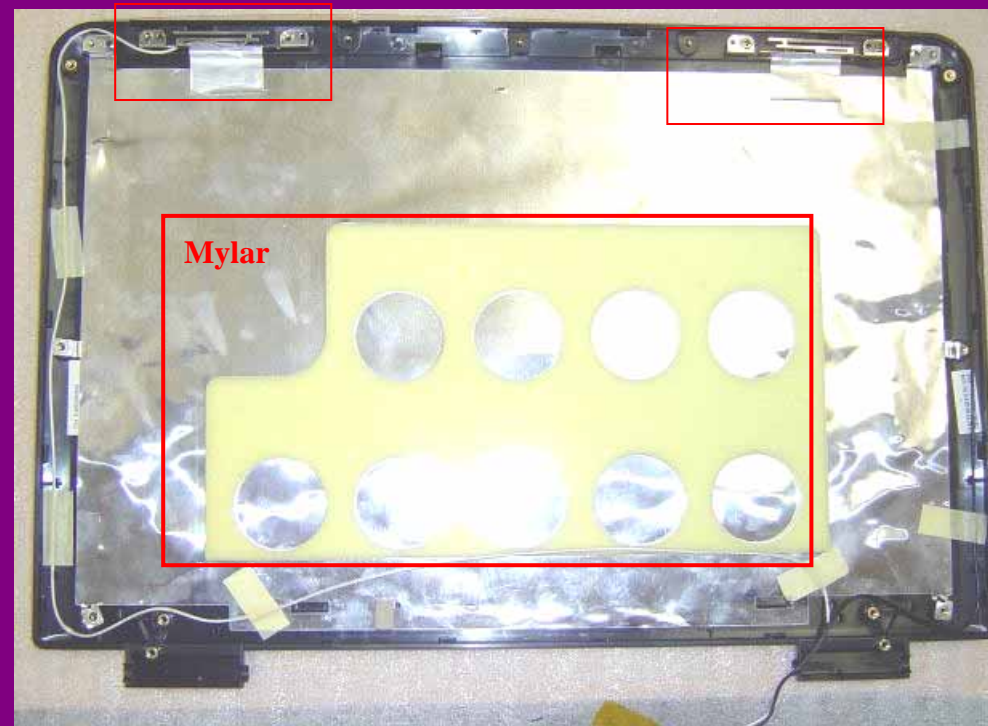


Figure 2-35 LCD cover module

How to disassemble LCD Support / Wire Antenna from “LCD cover module”?

1. Refer to section 3.1.2.
2. Release 6 * (item 30) as the arrow on support to remove “LCD support” . (Figure 2-36)
and lift all type to remove “wire antenna with bracket”. (Figure 2-37)

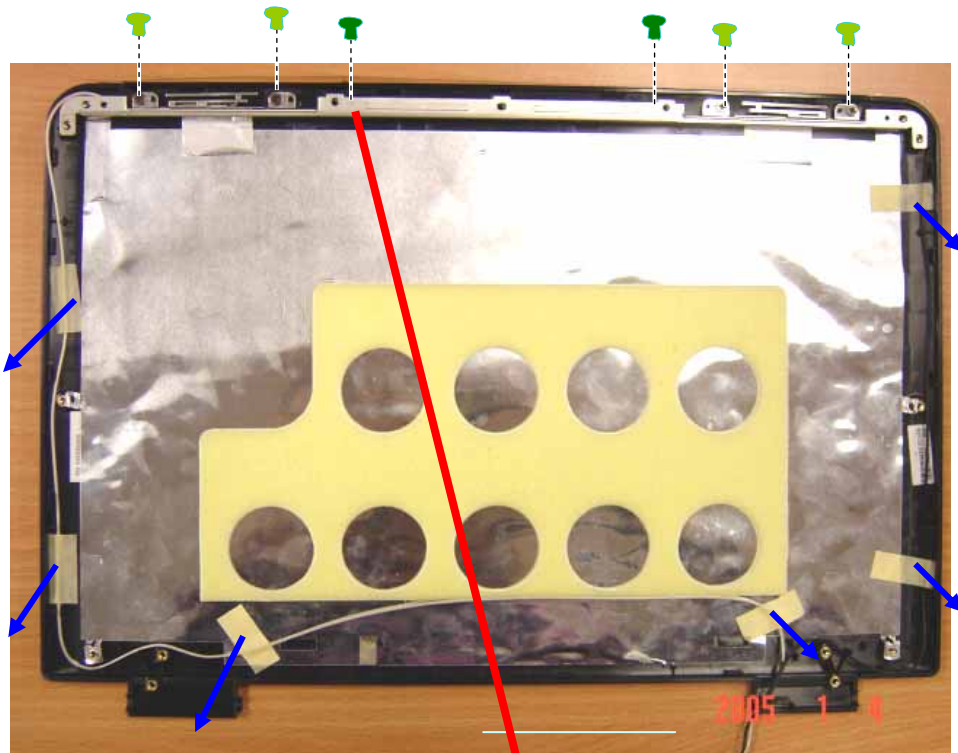


Figure 2-36
LCD Support



Figure 2-37
Wire antenna with bracket

