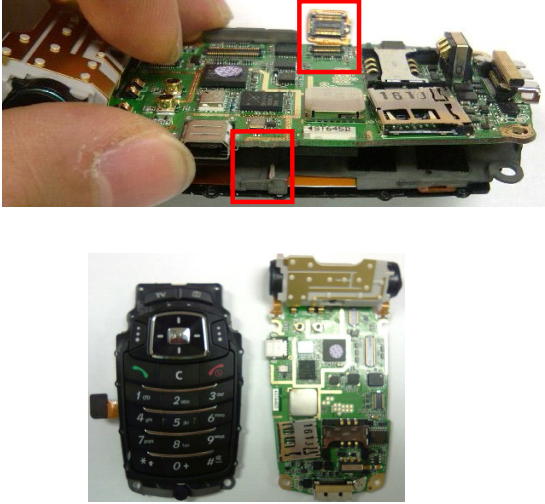
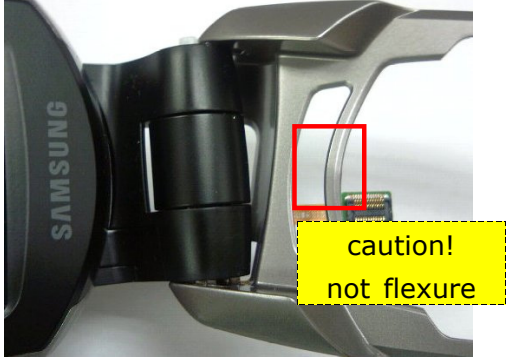
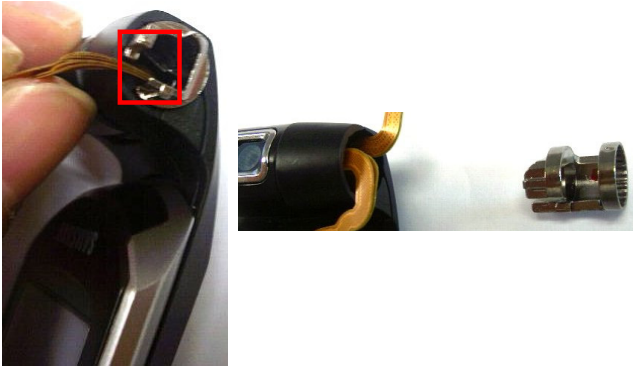

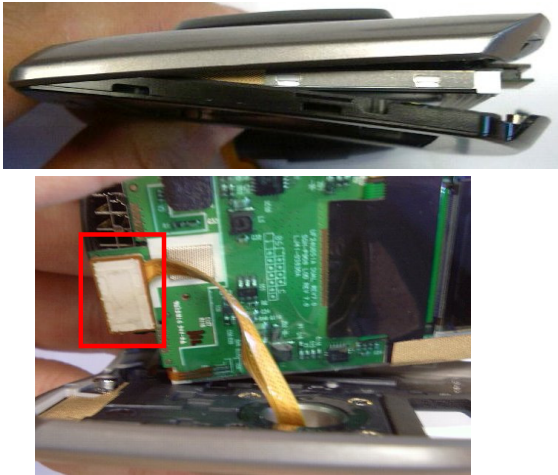

6. Disassembly and Assembly instructions

6-1. Disassembly

1	2
3	4

<p>5</p> 	<p>6</p> 
<p>1) Unsnap KEY FPCB CONNECTOR. 2) Disassemble a PBA from shield-can. And do that from left side.</p> <p>* caution</p> <p>1) Be careful not to crack the FPCB and damage the connector. 2) Be careful not to damage BGA parts</p>	<p>1) Separate FOLDER assembly from FRONT with pressing the FOLDER hinge.</p> <p>* caution</p> <p>1) When separating, be careful not to bend the FRONT. 2) Be careful not to tear or crack the FPCB of LCD and CAMERA. 3) Be careful not to damage or scratch the molding.</p>
<p>7</p> 	<p>8</p> 
<p>1) Move FPCB to the open side of Hinge-dummy. 2) Pull out the Hinge-dummy.</p> <p>* caution</p> <p>1) Be careful not to tear or crack the FPCB of LCD and CAMERA.</p>	<p>1) Rotate the LCD to anticlockwise and extract two screw covers. 2) Unscrew them.</p> <p>* caution</p> <p>1) Be careful not to damage or scratch the molding.</p>

9

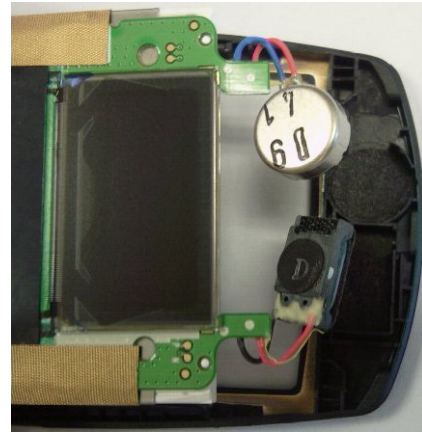


- 1) Disassemble a LCD frame from below.
Do use a tool.
- 2) Unsnap a LCD connector.

*** caution**

- 1) Be careful not to damage or crack the FPCB and connector.
- 2) Be careful not to damage or scratch the molding.

10

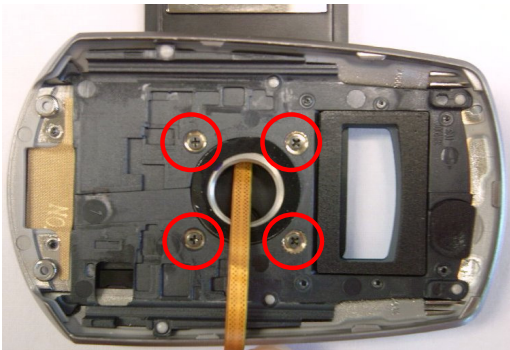


- 1) Take off the motor and receiver from FOLDER LOWER.

*** caution**

- 1) When separating, be careful not to cut the wires of motor and receiver.

11

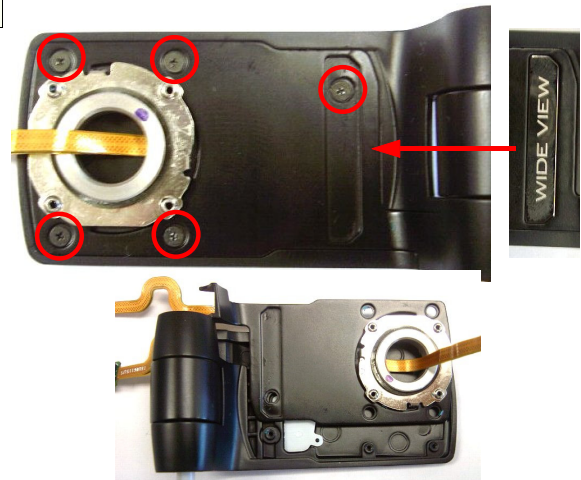


- 1) Unscrew 4 points like a picture below.

*** caution**

- 1) Be careful not to damage or scratch the molding.

12

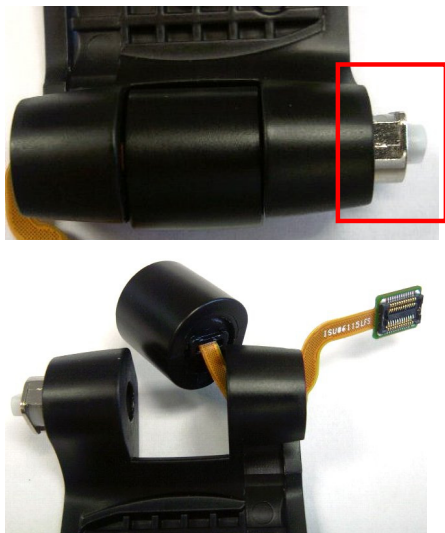


- 1) Take off a WIDE VIEW sticker.
- 2) Unscrew 5 points like a picture below.
- 3) Disassemble ARM UPPER and ARM LOWER from each other.

*** caution**



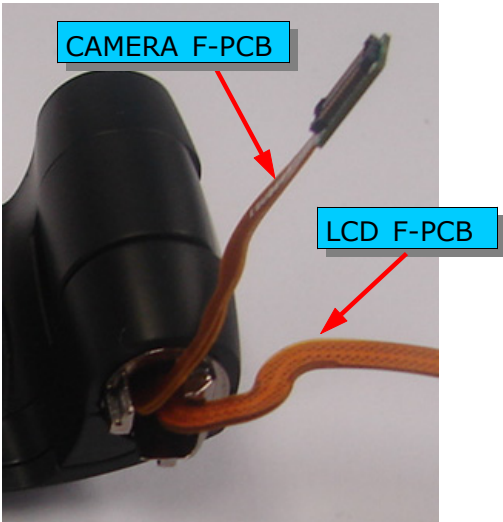
- 1) Be careful not to damage or scratch the molding.

13

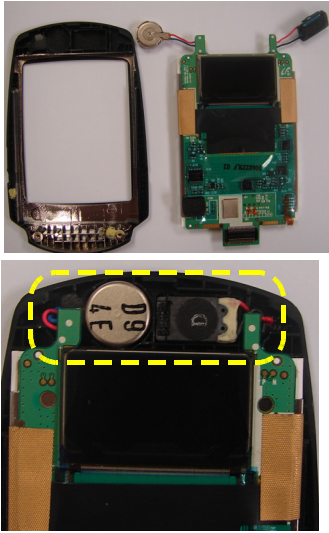


- 1) Pull out a hinge using a nipper.
 - 2) Separate a CAMERA from ARM UPPER.
- * caution**
- 1) Be careful not to damage the hinge.
 - 2) Be careful not to damage CAMERA FPCB.

6-2. Assembly

<p>1</p> 	<p>2</p> 
<p>1) Insert a CAMERA to ARM UPPER. 2) Inert a hinge.</p> <p>* caution</p> <p>1) Be careful not to damage the hinge. 2) Be careful not to damage CAMERA FPCB.</p>	<p>1) Insert a hinge-dummy to ARM UPPER . LCD connector should be parallel with hole of hinge-dummy.</p> <p>* caution</p> <p>1) Be careful not to damage CAMERA FPCB. 2) Confirm the direction of hinge-dummy.</p>
<p>3</p> 	<p>4</p> 
<p>1) Assemble ARM UPPER and ARM LOWER.</p> <p>* caution</p> <p>1) LCD FPCB should be located lower than CAMERA FPCB like a picture.</p>	<p>1) Screw 5 point like a picture below. 2) Attach WIDE VIEW sticker.</p> <p>* caution</p> <p>1) Be careful not to damage or scratch the molding.</p>

5

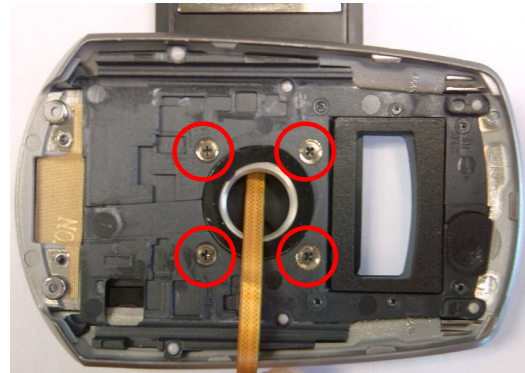


1) Put a motor and receiver in place.

*** caution**

1) Arrange wires to be located under the LCD PBA branch.

6

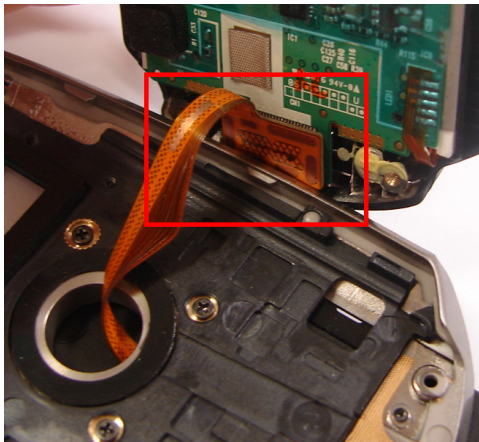


1) Assemble ARM and FOLDER UPPER and screw those 4 points. FOLDER UPPER should rotate to anticlockwise.

*** caution**

1) Be careful not to damage or scratch the molding.

7



1) Snap a LCD CONNECTOR.

*** caution**

1) Confirm the direction of LCD CONNECTOR.
2) When snapping, confirm the click sound.

8

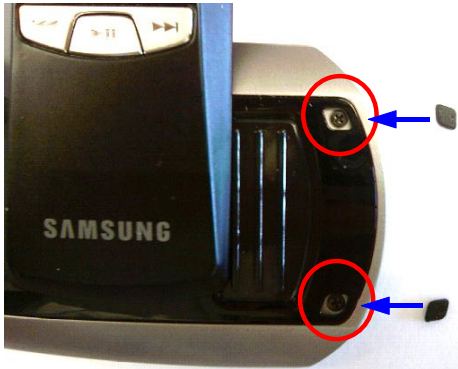


1) Assemble a LCD from upper side in order like below.

*** caution**

1) Be careful not to damage or scratch the molding.

9

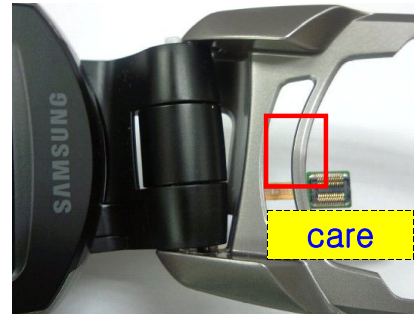


- 1) Screw 2 points like a picture below.
- 2) Insert the screw cover.

*** caution**

- 1) Be careful not to damage or scratch the molding.

10



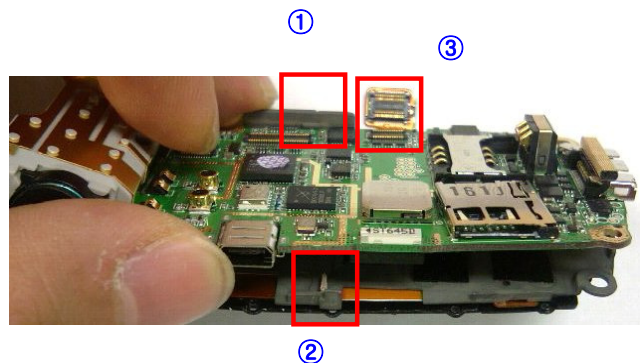
- 1) Insert CAMERA and LCD FPCB into the hole of FRONT.
 - 2) Assemble FRONT and FOLDER.
- * caution**
- 1) Be careful not to damage or scratch the molding.
 - 2) Be careful not to damage or tear FPCB.

11

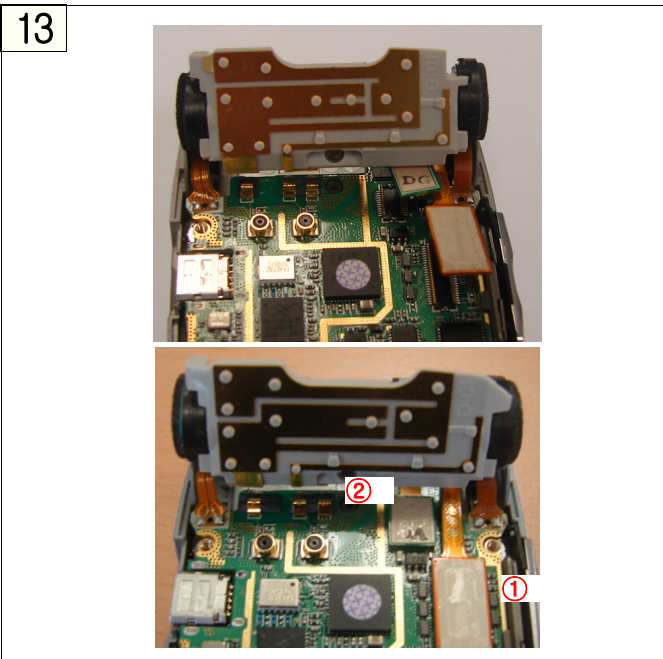


- 1) Put KEYPAD in place.

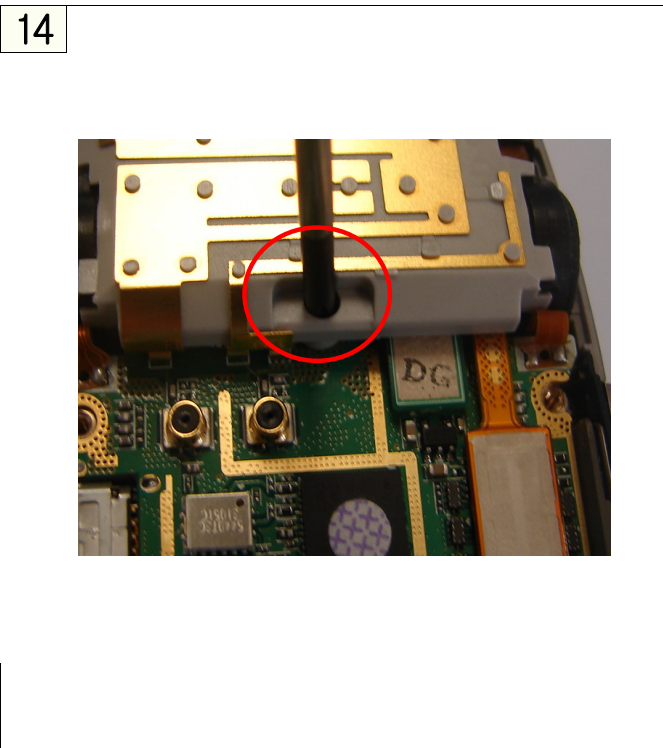
12



- 1) Assemble PBA with SHIELD-CAN and confirm the locking.
 - 2) Snap the connector.
- * caution**
- 1) Be careful not to damage the connector.



- 1) Put the FPCB of LCD and CAMERA between INTEANNA and PBA.
 - 2) Snap the connector of LCD and CAMERA.
- * caution**
- 1) Be careful not to damage or tear FPCB.
 - 2) When snapping, confirm the click sound.



- 1) Screw INTENNA.
- * caution**
- 1) Be careful not to damage or scratch INTENNA.



- 1) Screw 6 points like a picture below.
- * caution**
- 1) Be careful not to damage or scratch the molding.



- 1) Insert 2 screw covers in the top.