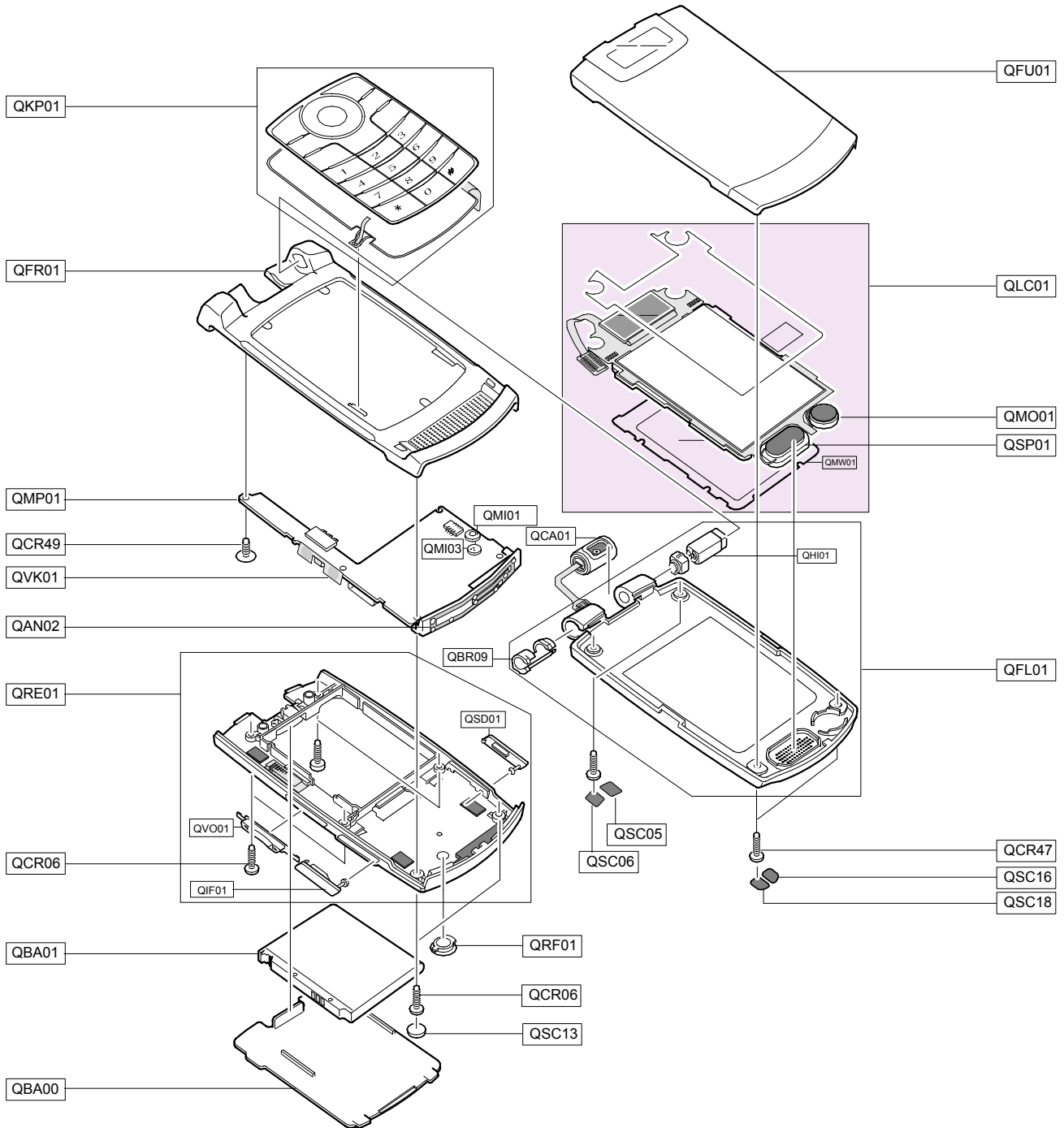


# 5. Exploded View and Parts List

## 5-1. Cellular phone Exploded View



**5-2. Cellular phone Parts list**

Design LOC		Discription	SEC CODE
QAN02		INTENNA-SGHZ620	GH42-00849A
QBA00		ASSY COVER-BATT	GH98-02985A
QBA01		INNER BATTERY PACK-900MAH	GH43-02398A
QBR09		NDC-HINGE BRACKET	GH71-06431A
QCA01		UNIT-CAMERA	GH59-03288A
QCR06		SCREW-MACHINE	6001-001155
QCR47		SCREW-MACHINE	6001-001695
QCR49		SCREW-MACHINE	6001-001823
QFR01		ASSY CASE-FRONT	GH98-02959A
QFU01		ASSY CASE-F/UPPER	GH98-02791A
QKP01		ASSY KEYPAD-(TIM/BLK)	GH98-02790A
QMI01		MICROPHONE-ASSY-SGHD830	GH30-00278A
QMI03		RMO-RUBBER MIC HOLDER	GH73-07110A
QMO01		MOTOR DC-SGHZ620	GH31-00265A
QMP01		PBA MAIN-SGHZ620	GH92-02732A
QRF01		PMO-RUBBER RF COVER	GH72-30630A
QSC05		MPR-FOLDER SCREW SHEET A	GH74-22971A
QSC06		MPR-FOLDER SCREW SHEET B	GH74-22972A
QSC13		RMO-RUBBER REAR SCREW COVER	GH73-07752A
QSC16		MPR-TAPE F/TOP SCREW A	GH74-27733A
QSC18		MPR-TAPE F/TOP SCREW B	GH74-27734A
QSP01		SPEAKER	3001-002015
QVK01		UNIT-VOLUME KEY	GH59-03219A
QRE01		ASSY-CASE-REAR	GH98-00901A
	QIF01	PMO-COVER IF	GH72-30626A
	QSD01	PMO-COVER MICRO SD	GH72-30628A
	QVO01	PMO-VOLUME KEY	GH72-30629A
QFL01		ASSY-CASE-F/LOWER	GH98-00898A
	QHI01	ASSY-HINGE	GH98-00899A
QLC01		MEA-LCD MODULE KIT	GH97-06596A
	QMW01	AS-LCD WINDOW	GH81-04515A

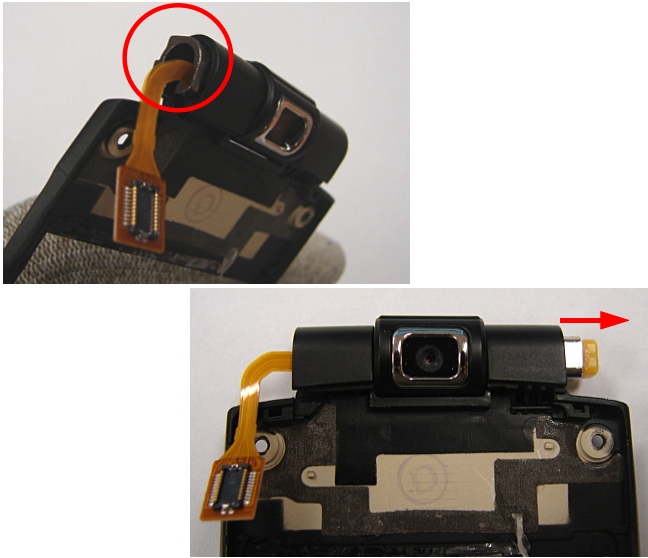
Discription	SEC CODE
BAG PE	6902-000297
CBF INTERFACE-DATA LINK CABLE	GH39-00444A
ADAPTOR-SGHD800 TA(EU)	GH44-01060A
S/W CD-SGHZ620 PC STUDIO 3.0	GH46-00328A
UNIT-EARPHONE(BLK)	GH59-02499A
LABEL(P)-WATER SOAK	GH68-02026A
LABEL(P)-WATER SOAK	GH68-02026A
LABEL(R)-MASTER TIM	GH68-11408B
MANUAL USERS-TIM TALIAN	GH68-11875A
LABEL(P)-BASE FRONT LABEL	GH68-12049A
LABEL(R)-MAIN(TIM)	GH68-12061A
BOX(P)-UNIT MAIN(TIM)	GH69-04317A
CUSHION-CASE TA2 MA2	GH69-04584A
RMO-RUBBER YAMAHA	GH73-07659A
MPR-BOHO VINYL LCD CONN	GH74-15350A
MPR-VINYL BOHO F/UPPER B	GH74-25093A
MPR-VINYL BOHO MAIN WIN A	GH74-25095A
MPR-TAPE DUST PREVENTION	GH74-25103A
MPR-TAPE KEY TAIL	GH74-25104A
MPR-GASK TAPE	GH74-25105A
MPR-TAPE GASKET IF	GH74-25107A
MPR-TAPE ESD LCD MODULE	GH74-25846A
MPR-INSU TAPE PBA VOLKEY	GH74-26674A
MPR-INSU TAPE PBA SD	GH74-27338A
MPR-INSU TAPE PBA IF	GH74-27375A
MPR-TAPE	GH74-27595A
MPR-TAPE	GH74-27596A
MPR-TAPE KEYPAD PREVENTION	GH74-27820A
MPR-VINYL BOHO STATIC	GH74-28052B
MPR-TAPE KEYPAD R	GH74-28054A
AS-LCD TAPE	GH81-05256A
AS-IC-MCP UMTS	GH81-05912A

### 5-3. Disassembly

<p>1</p> 	<p>2</p>  
<p>1) Remove 6Screws on Rear Case.                  2) Open the IF COVER.                  3) Open the MICRO SD COVER.  <b>* caution</b>                  1) Be careful not to get a damage.</p>	<p>1) Lift the hook at the end of the lower case with an instrument and disassemble the Rear Cover like the sequence below.  <b>* caution</b>                  1) Be careful not to get a damage of Rear Case.</p>
<p>3</p> 	<p>4</p> 
<p>1) Detach the LCD,CAMERA conn.                  2) Detach the Vol Key FPCB with tweezers                  3) Remove the screw on PBA.                  4) Remove the Keypad.  <b>* caution</b>                  1) Be careful not to get a damage of FPCB when Detaching LCD conn, CAM conn, and VOLUME KEY FPCB.</p>	<p>1) Remove the dust prevention tape.  <b>* caution</b>                  1) Pay attention to damage of the LCD,CAM conn.</p>

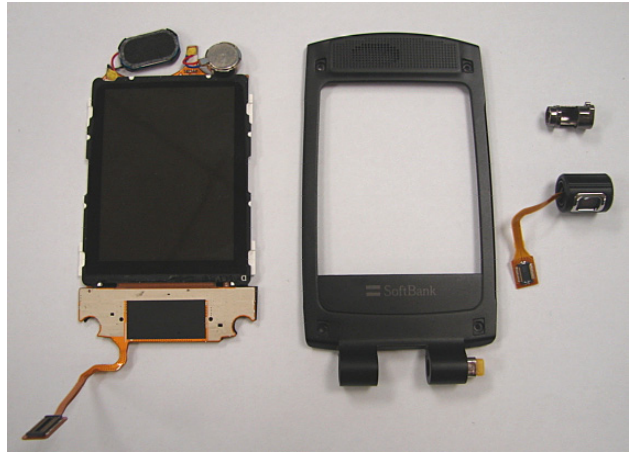
<p>5</p> 	<p>6</p> 
<p>1) Disassemble the Front Cover from front case by Pushing out the hinge spring. 2) Please refer to the Picture below. <b>* caution</b> 1) Be careful not to get a damage. 2) Pay attention to the damage of the LCD,CAM conn.</p>	<p>1) Remove the SCREW CAP. 2) UNSCREW 4 Points. <b>* caution</b> 1) When you use a screwdriver, Be careful of the damage of component.</p>
<p>7</p> 	<p>8</p>  
<p>1) Disassemble the Upper Case of the folder with an instrument like below. <b>* caution</b> 1) Be careful not to get a damage.</p>	<p>1) Separate the MOT &amp; SPK with tweezers. 2) Remove the LCD from the LOWER case (Holding the direction of hinge bracket like below) <b>* caution</b> 1) When you remove the LCD. Be careful of the crack and damage of the LCD &amp; LCD FPCB</p>

9



- 1) Remove the Hinge Bracket with tweezers.
  - 2) In order to detach the CAM, Remove the Hinge like below
- \* caution**
- 1) Be careful of the crack and damage of the CAM FPCB

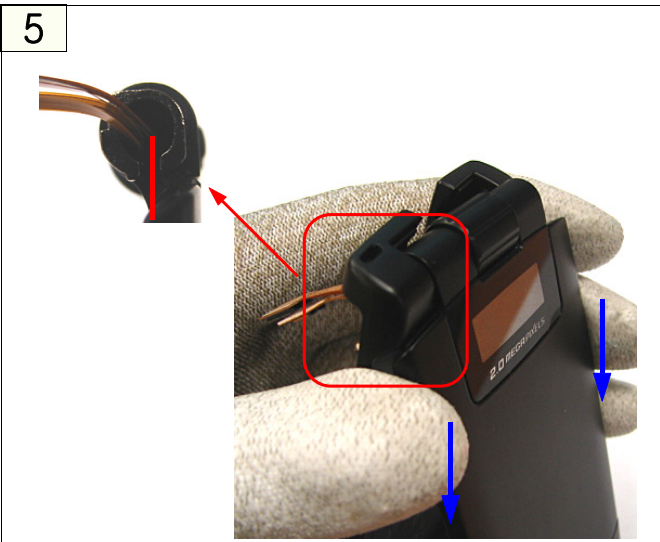
10



- 1) Please check the disassembled part.

### 5-4. Assembly

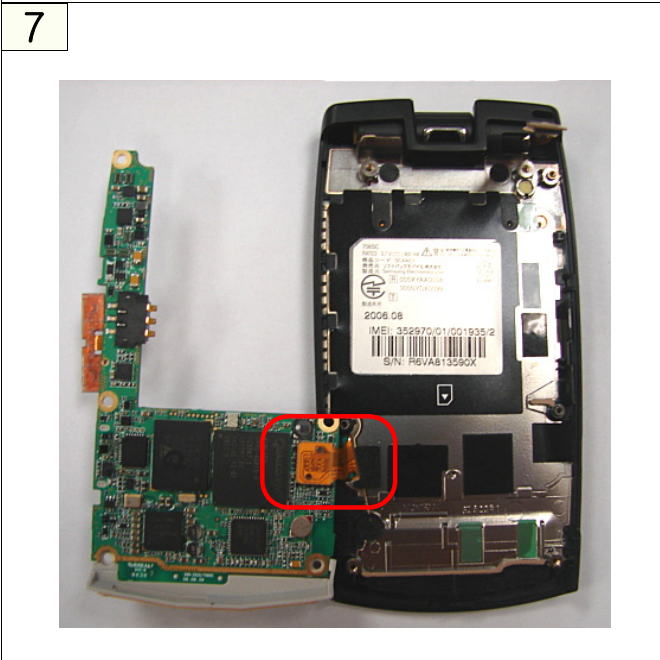
<p>1</p> 	<p>2</p> 
<p>1) Insert CAM FPCB in the LOWER like below.</p> <p>2) Insert Hinge like below Please refer to the Picture below.</p> <p><b>* caution</b></p> <p>1) Be careful CAM FPCB Crack.</p>	<p>1) Insert LCD FPCB keeping up the lower direction of Hinge Bracket</p> <p>2) Place the SPK &amp; MOTOR.</p> <p>3) Place the LCD.</p> <p><b>* caution</b></p> <p>1) When you insert the LCD FPCB, Pay attention to damage of the FPCB</p> <p>2) Be careful of SPK &amp; MOTOR wire crack</p>
<p>3</p> 	<p>4</p> 
<p>1) Combine the UPPER &amp; Lower Please refer to the sequence below.</p> <p><b>* caution</b></p> <p>1) Be careful not to get a damage of outward</p>	<p>1) SCREW the 4 POINTS.</p> <p><b>* caution</b></p> <p>1) When you use a screwdriver, Be careful of the damage of component.</p>



- 1) Combine the Folder and Front case like the picture below.(Keeping up the lower direction of hinge bracket and Folder position.)
- \* caution**
- 1) Be careful not to get a damage.
  - 2) Be careful of the crack and damage of LCD, LCD Conn.
  - 3) Absolutely Keep up the picture's direction of Folder



- 1) Keeping up the FOLDER's direction, Combine the Folder with a instrument.
- \* caution**
- 1) Be careful not to get a damage.
  - 2) Absolutely Keep up the picture's direction of Folder



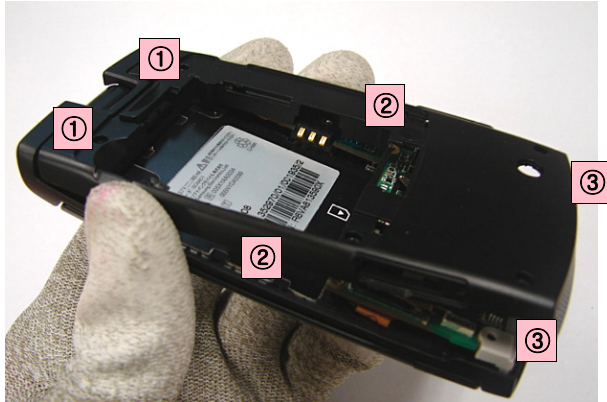
- 1) Combine the KEY FPCB Conn.
- \* caution**
- 1) Be careful not to get a damage of KEY FPCB



- 1) Screw down
  - 2) Connect CAMERA,LCD Conn.and VOLUME KEY FPCB
- \* caution**
- 1) Be careful not to get a damage of CAMERA,LCD FPCB and VOLUME KEY FPCB.



9



1) Assemble the REAR with FRONT ASS'Y like below sequence.

**\* caution**

1) Be careful not to get a damage.

10



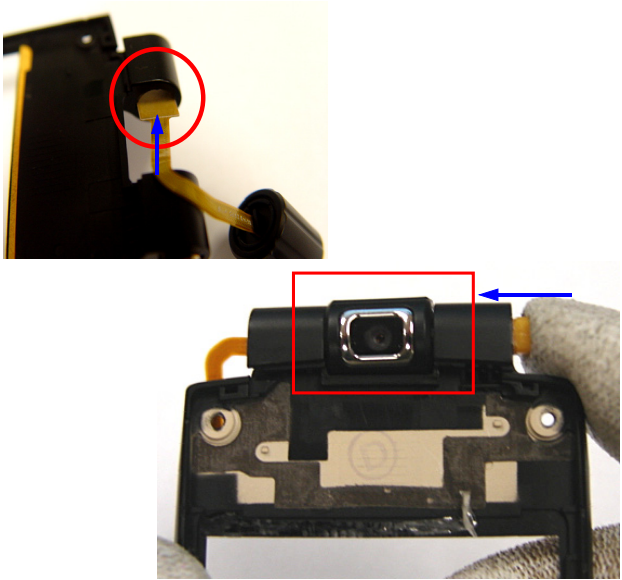

1) SCREW the 6 POINTS.

2) Insert SCREW Cap at two points

**\* caution**

2) Pay attention to damage of the LCD con FPCB.

### 5-5. LCD KIT

<p>1</p> 	<p>2</p> 
<p>1) Attach the gasket on the LCD Conn. * <b>caution</b> 1) Attach the gasket according to red line like a picture.</p>	<p>1) Attach the black insulation tape on the LCD * <b>caution</b> 1) Be careful of the red lines.</p>