

---

## 4. Array course control

---



**Test Jig (GH80-03308A)**



**Test Cable (GH39-00478A)**

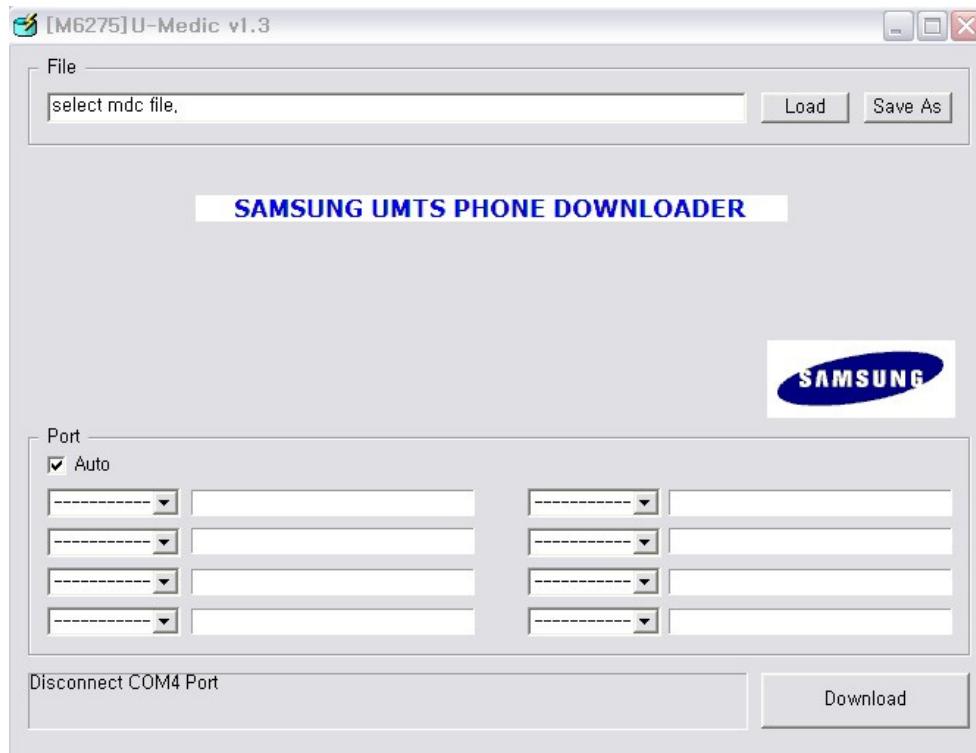


**RF Test Cable (GH39-00397A)**

## 4.1 Downloading Binaries.

Start the Downloader application.

You can get the downloader program from binary zip file. Unzip the file and move to the \tools\downloader directory. You will see below if run the [M6275]U-Medic v1.3\_SVC.exe file.



Please follow the order. The detailed fact is explained below. (store the user data using PC-Studio3 if necessary)

1. Load the Z620.mdc file.
2. Connect the Mobile Handset to the PC via USB port.
3. Download.

First, click the 'Load' button to select "Z620.mdc" file. The mdc file is located in the \tools\downloader directory. And then Connect the Mobile Handset to the PC via USB port. Press power button with red color and button captioned 4 to put the mobile into download mode. To verify that the mobile is put into download mode, just check the front LCD screen of the mobile. (USB DOWNLOAD SAMSUNG UMTS)

Once the mobile is detected/sensed by the Downloader Application, the appropriate Mobile Entry will be enabled in the application screen. Optionally Port Search button could be pressed to detect/sense the mobile.

Port

Auto

COM4 Ready...

Detect COM4 Port

Download

Press 'Download' Button to proceed. After successful completion of download, a message saying Download Completed will be flashed.

Please try to download again if you will see the "ERROR : Download Fail" popup. We need to download twice when the Boot and Resource code is changed. This is for preventing a wrong operation.

Warning:-

Incorrect download of binary file may lead to incorrect operation of the mobile, or the mobile may not operate at all.