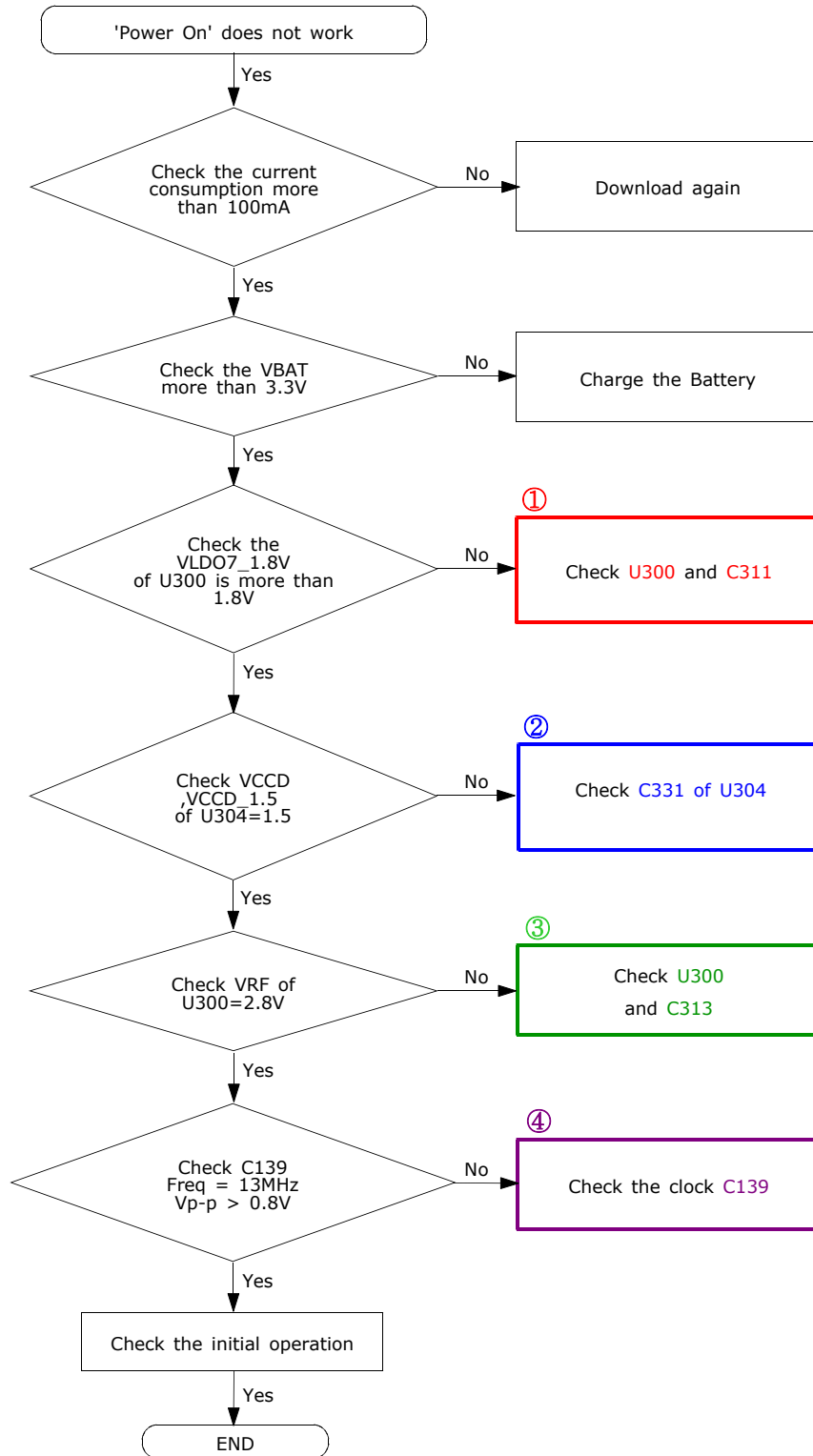
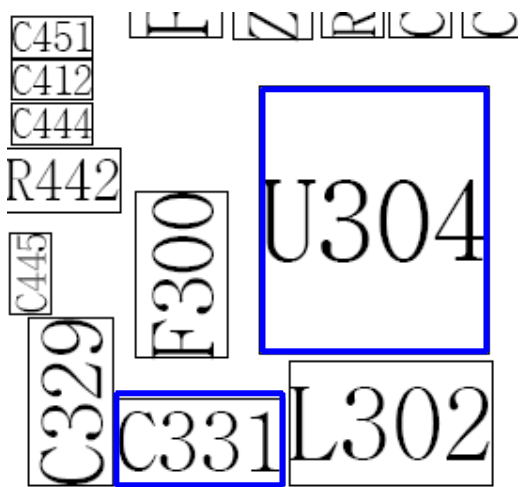
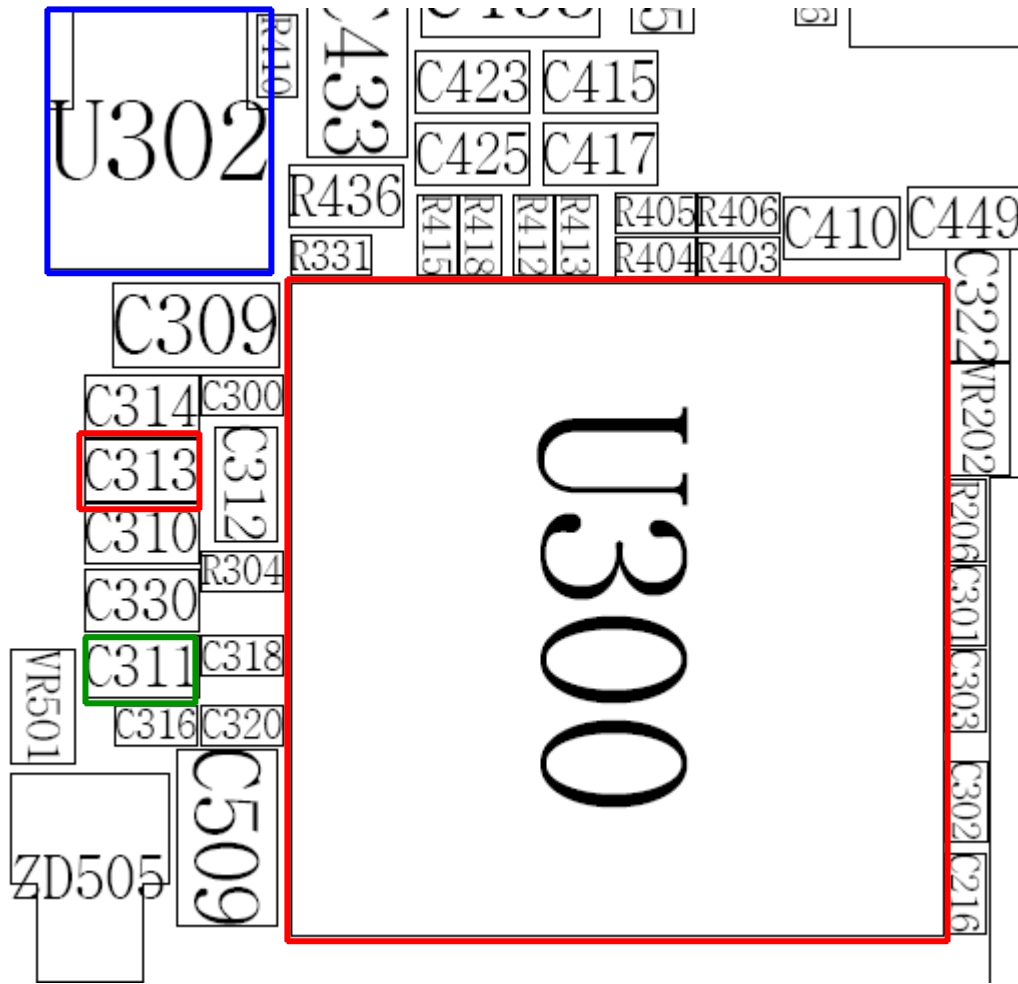


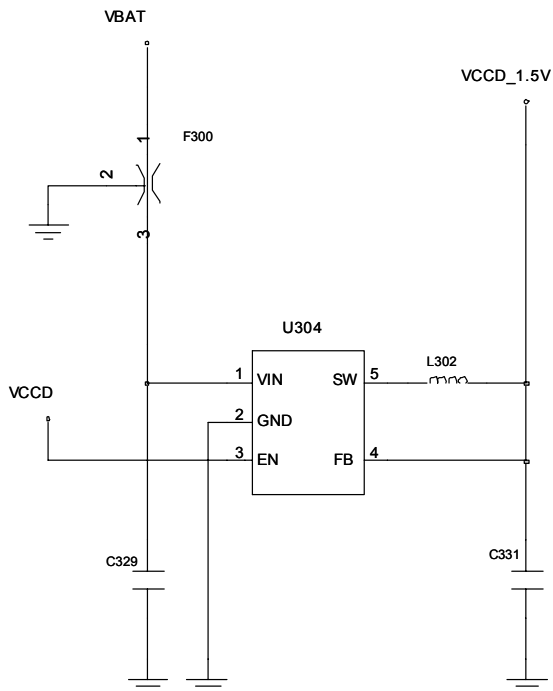
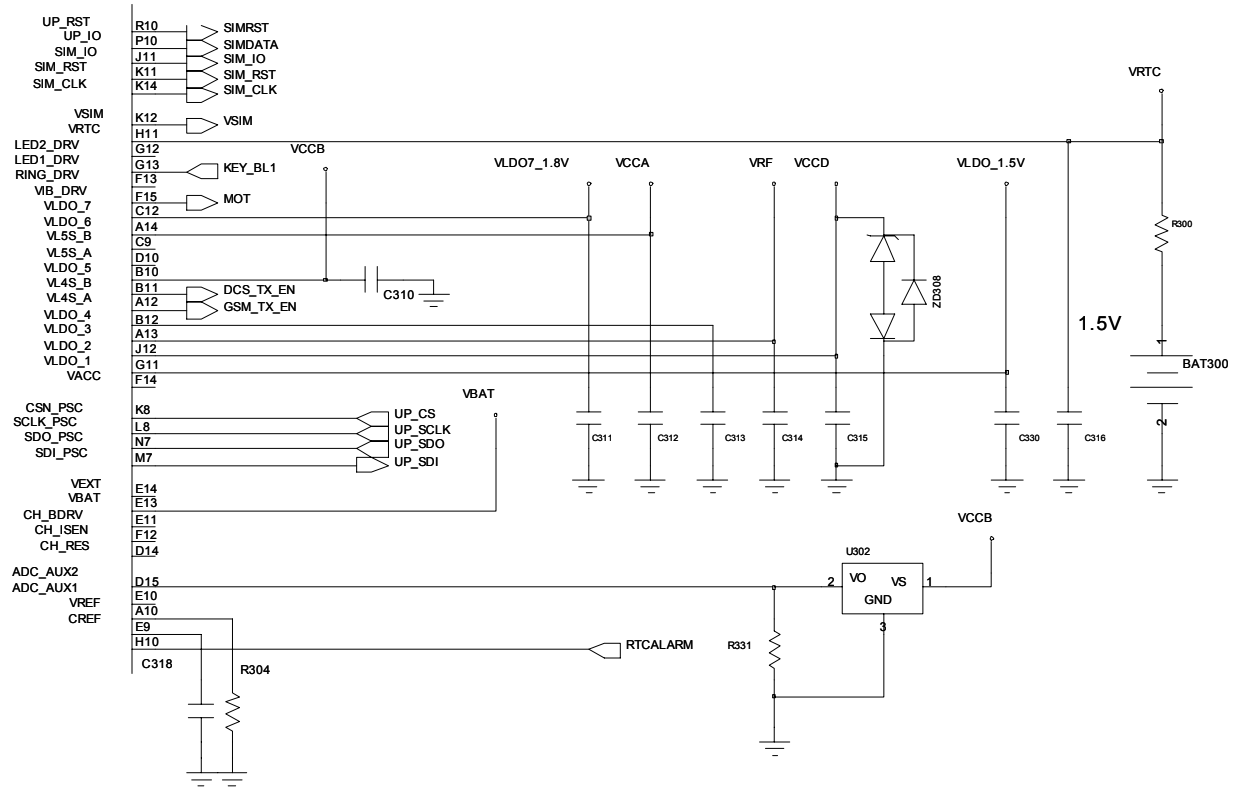
# 9. Flow Chart of Troubleshooting

## 9-1 BASEBAND

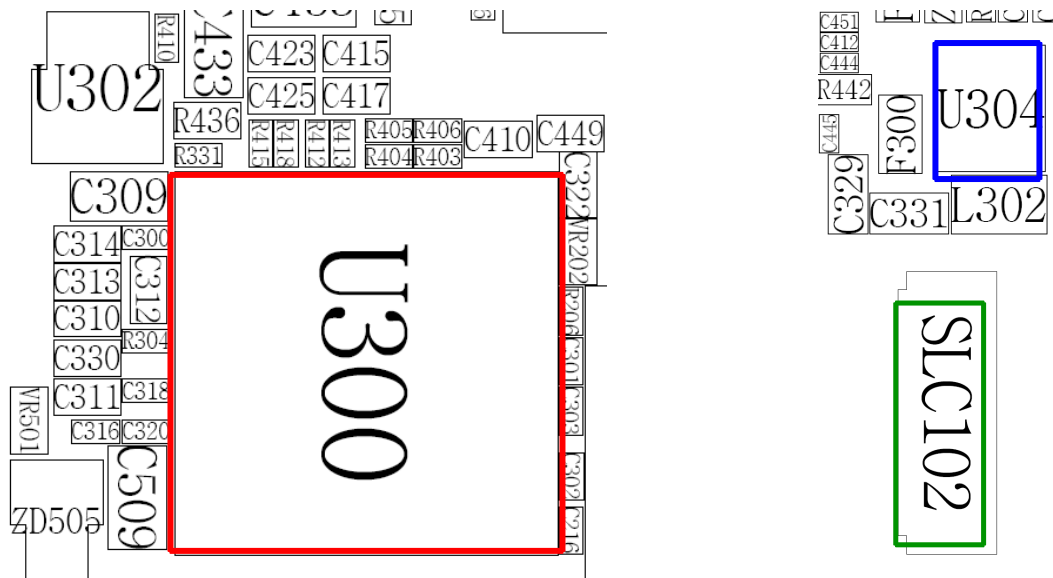
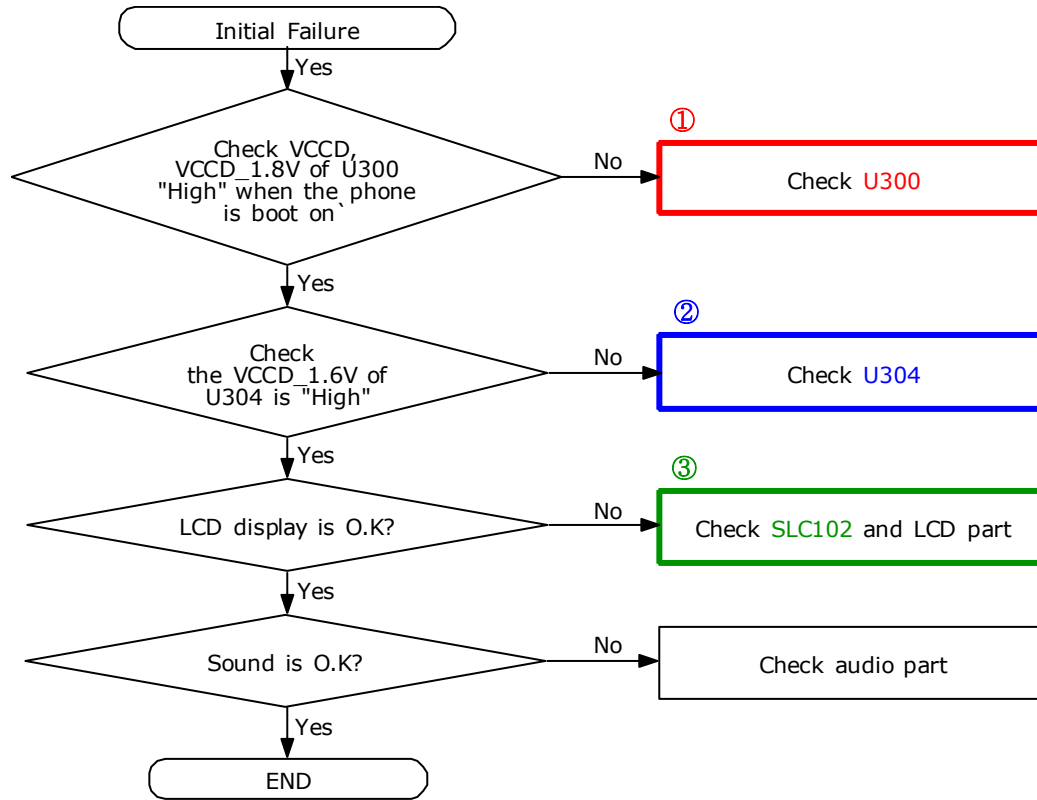
### 9-1-1. Power ON

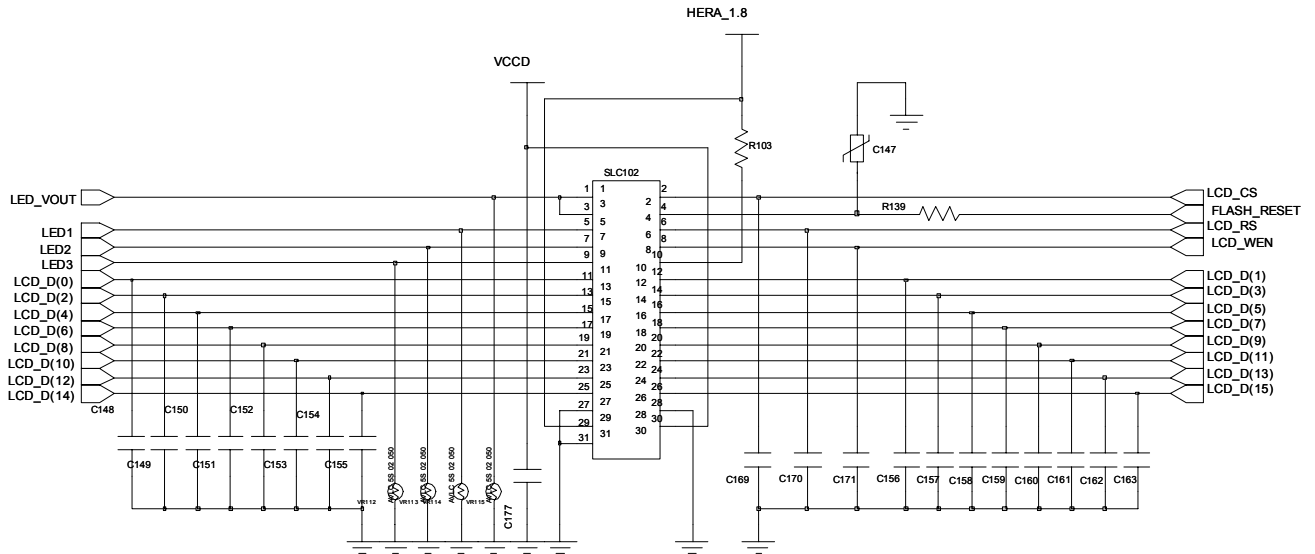




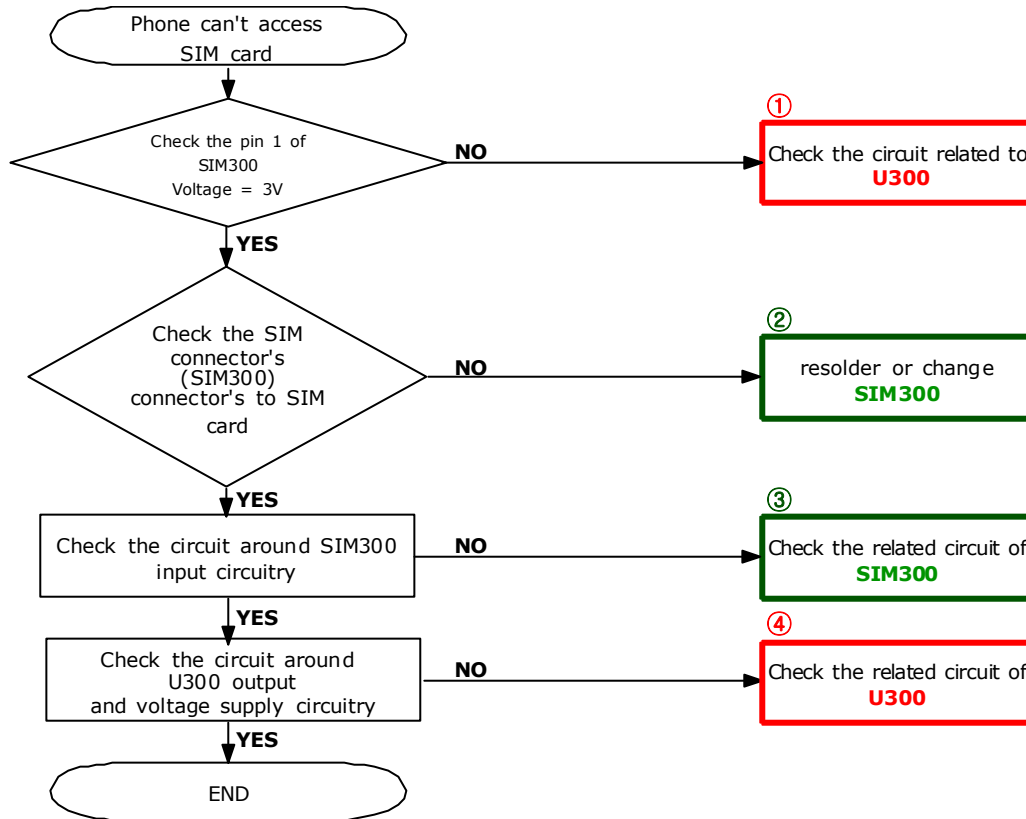


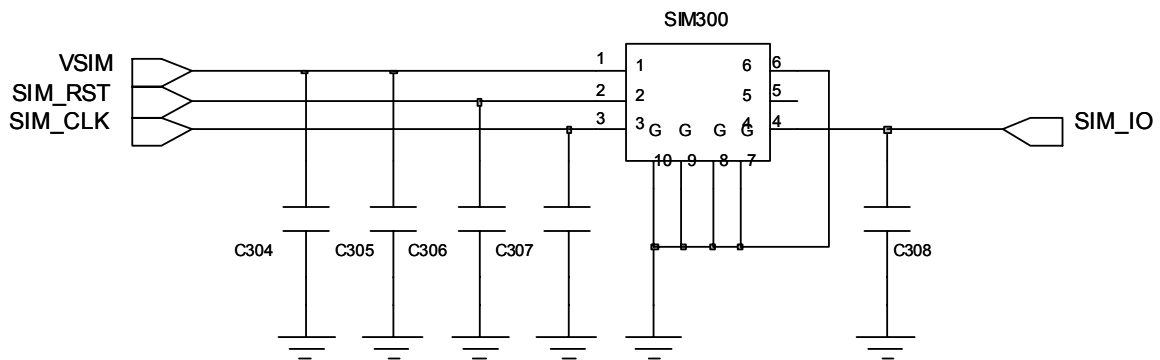
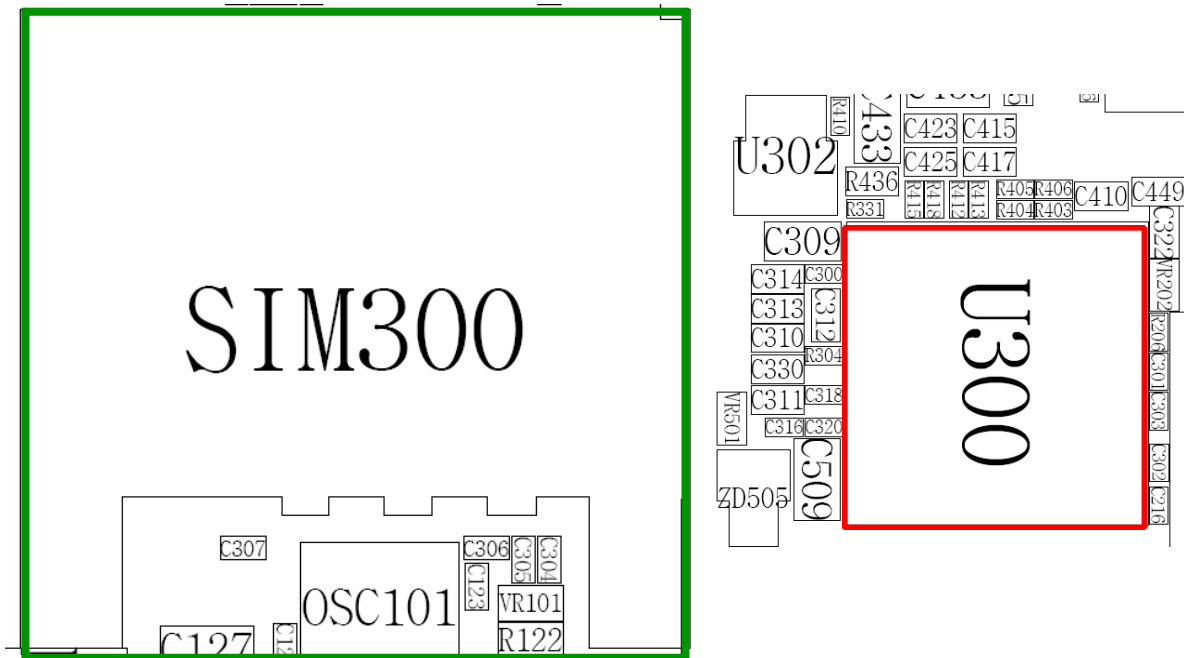
9-2-2. Initial



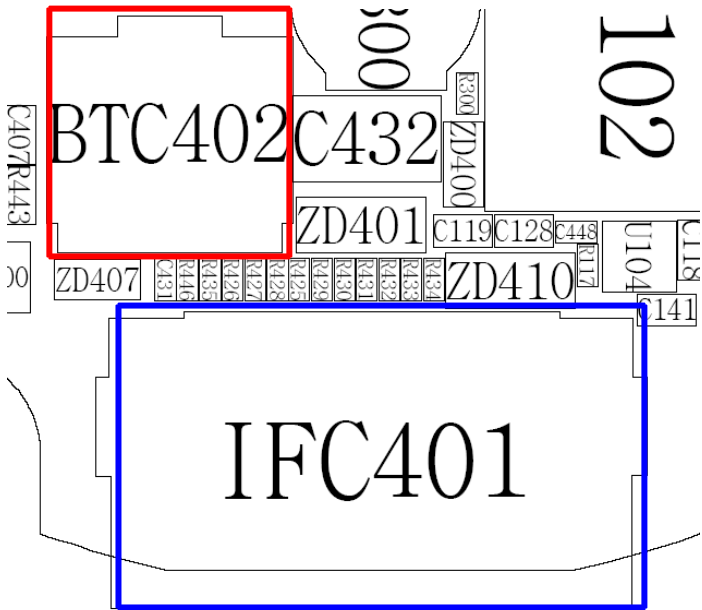
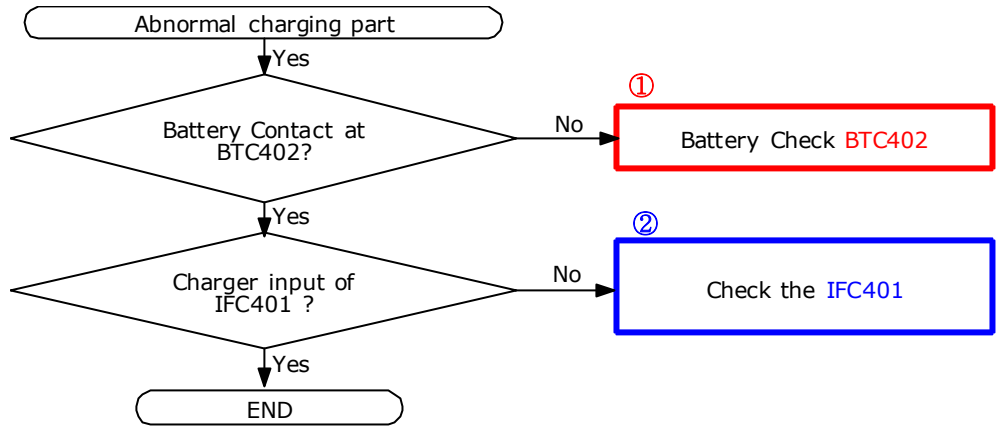


### 9-1-3. Sim Part

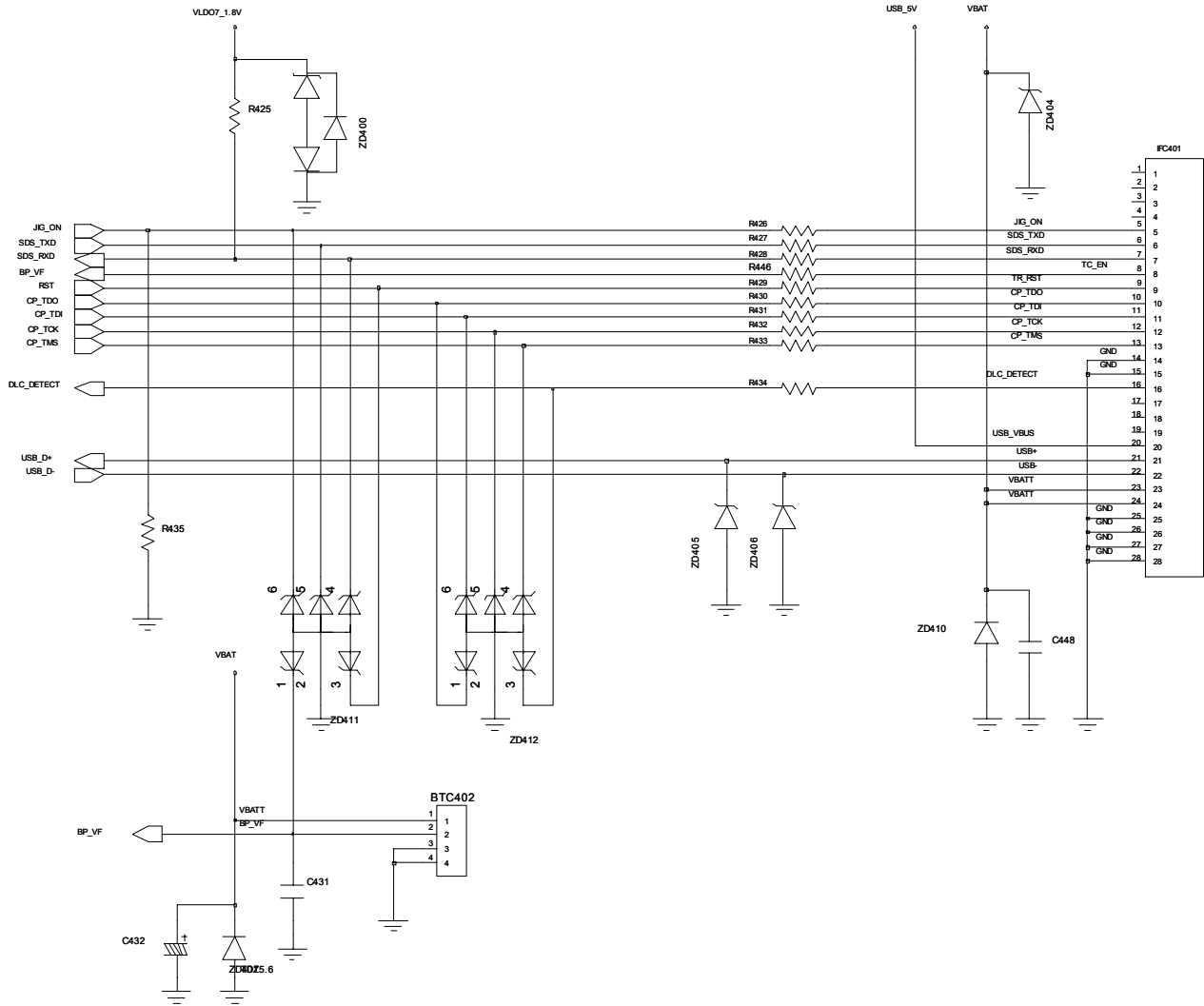




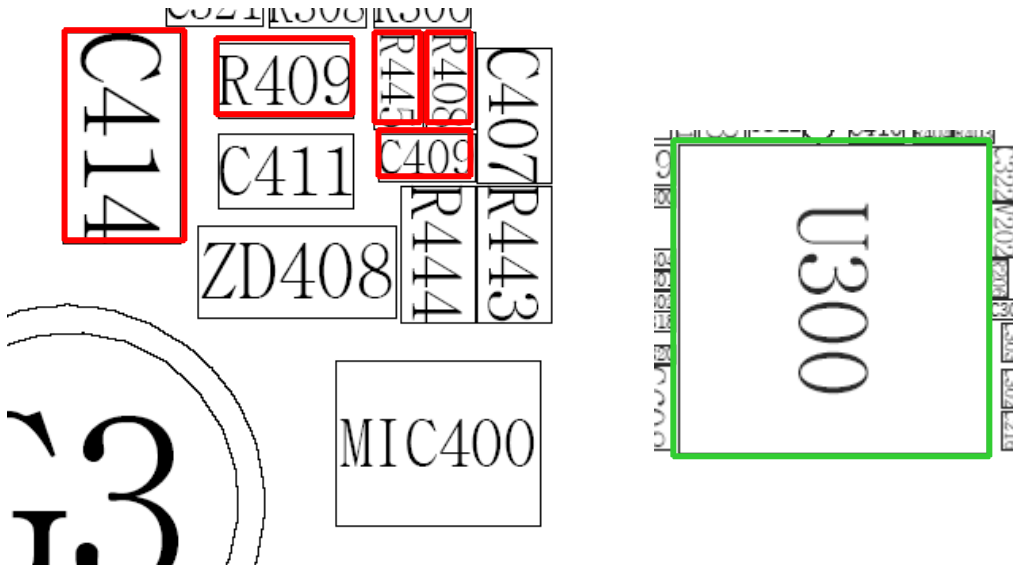
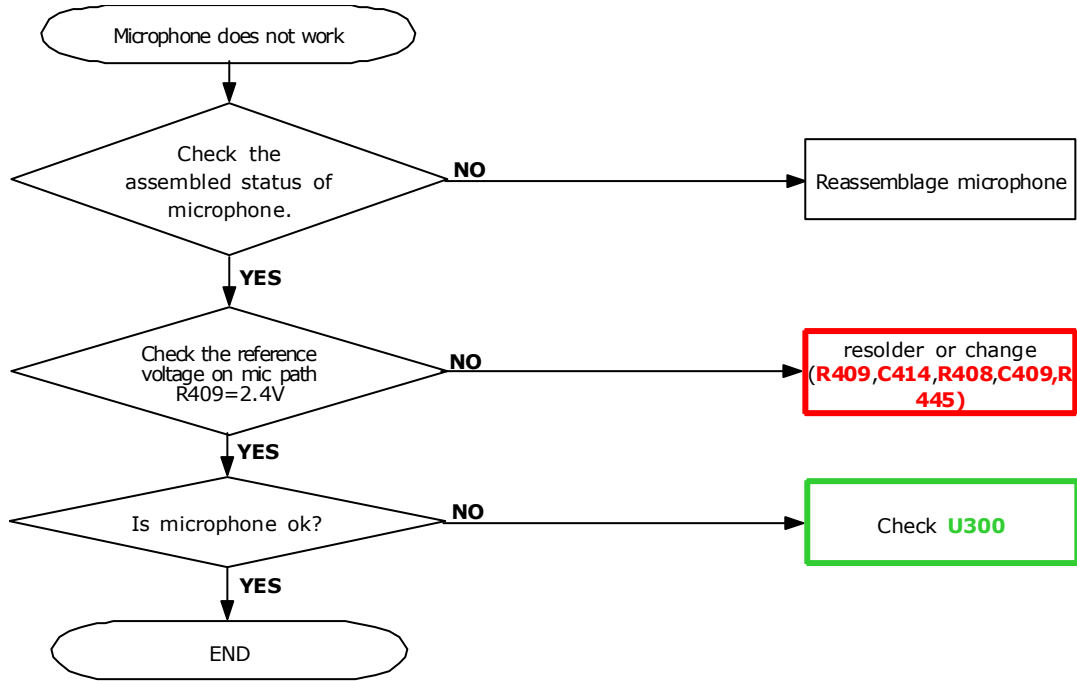
### 9-1-4. Charging Part

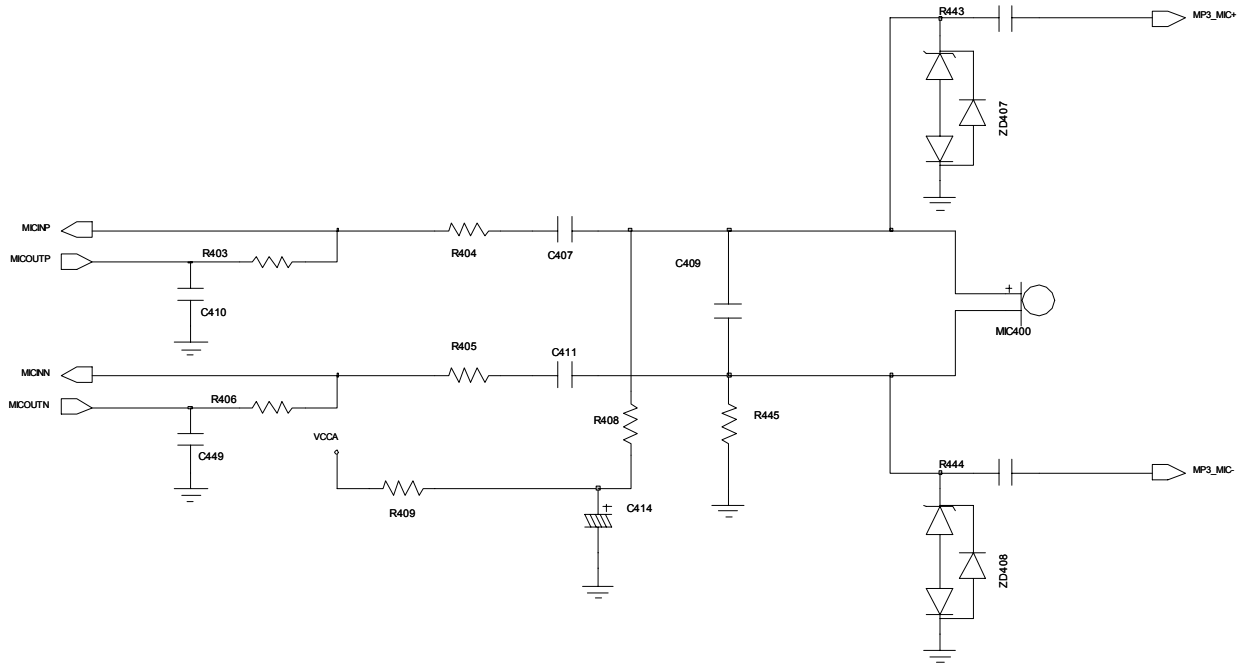




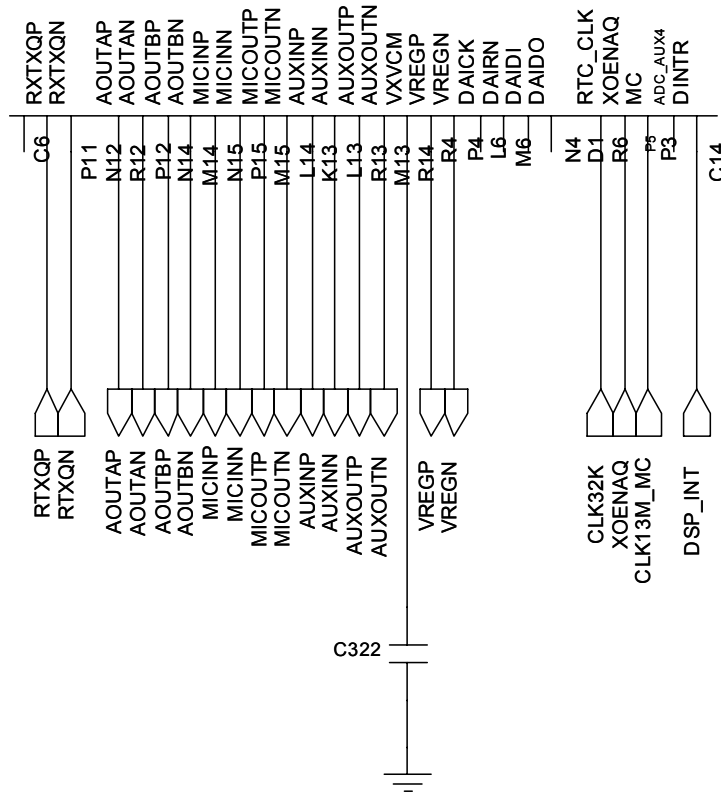


### 9-1-5. Microphone Part

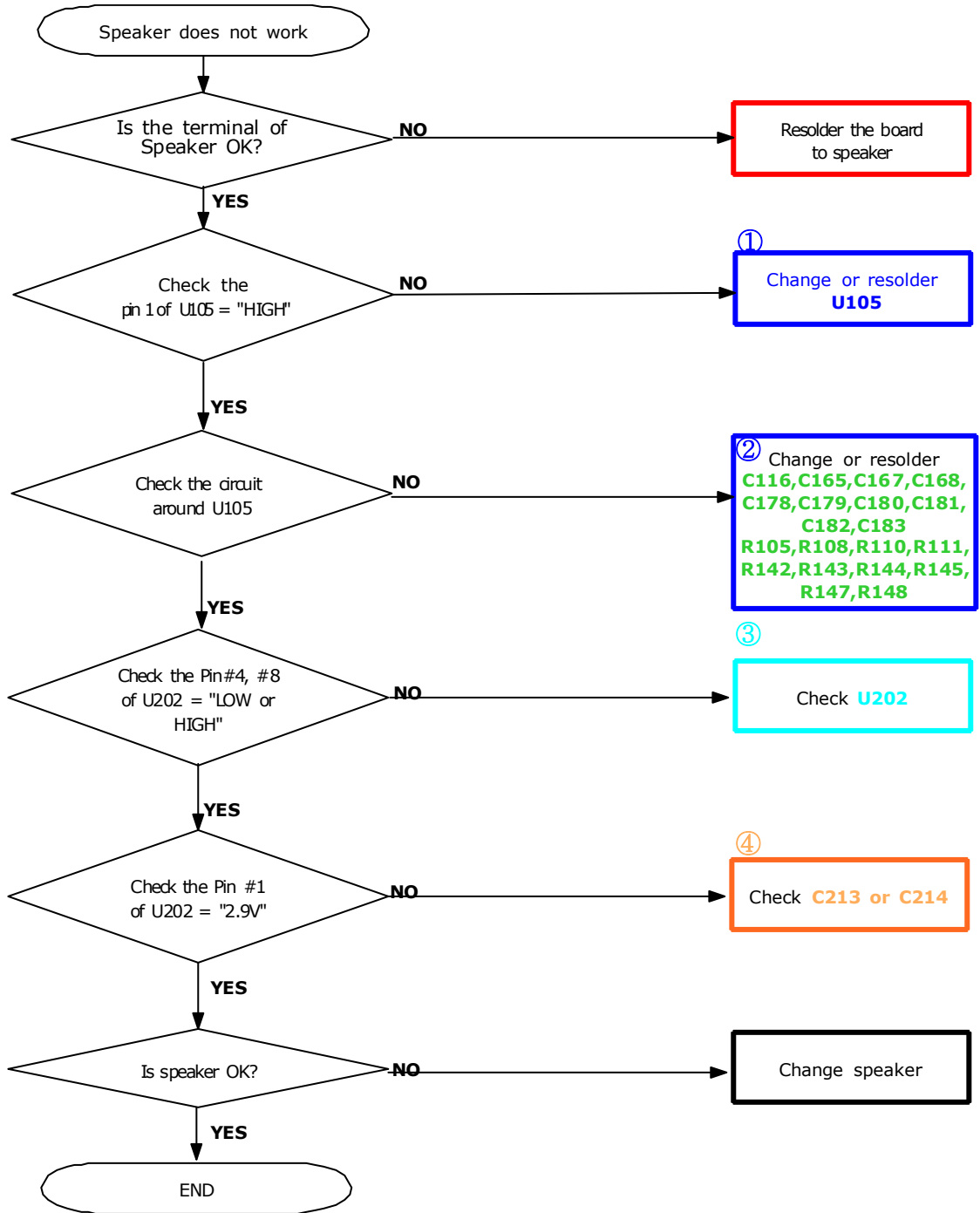


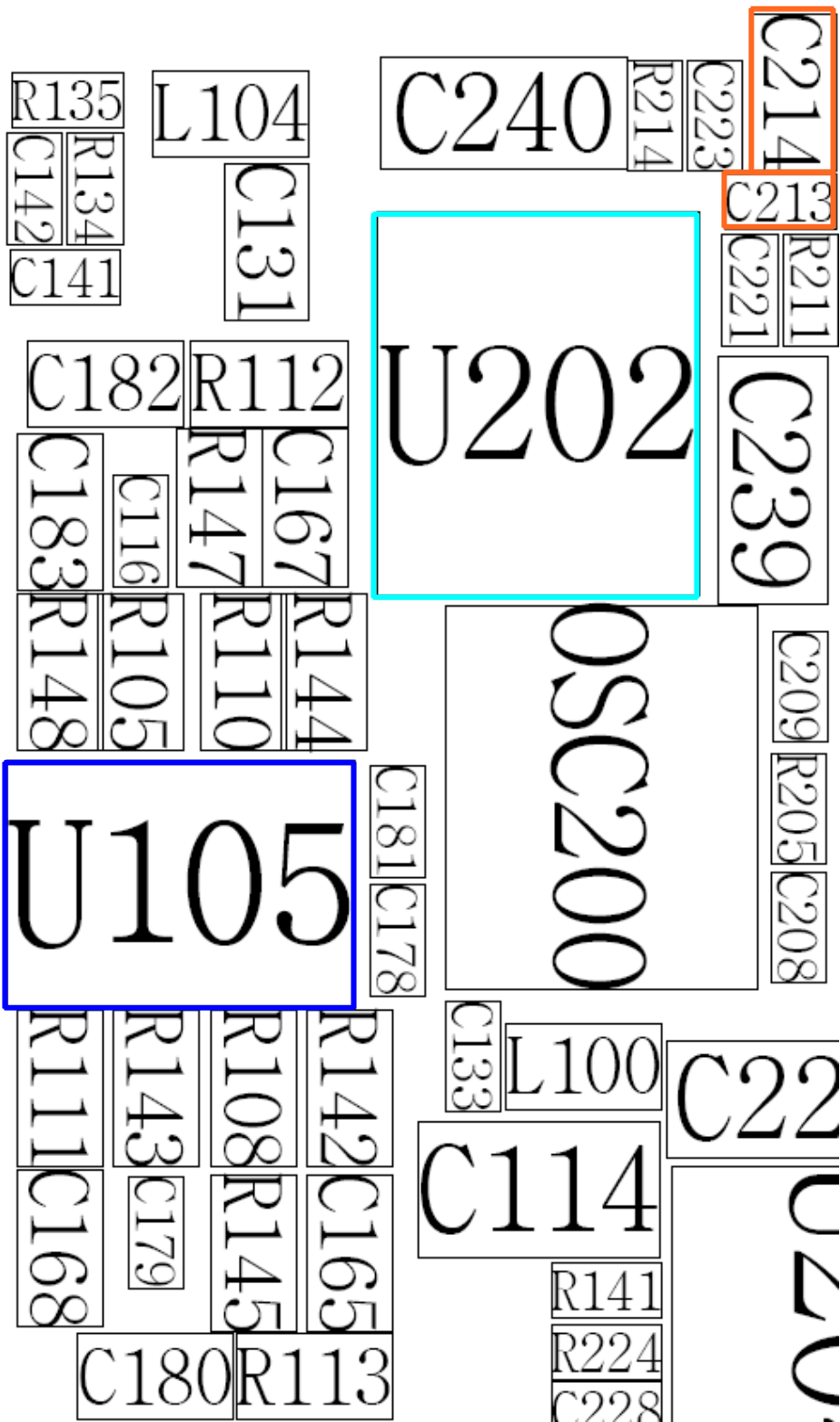


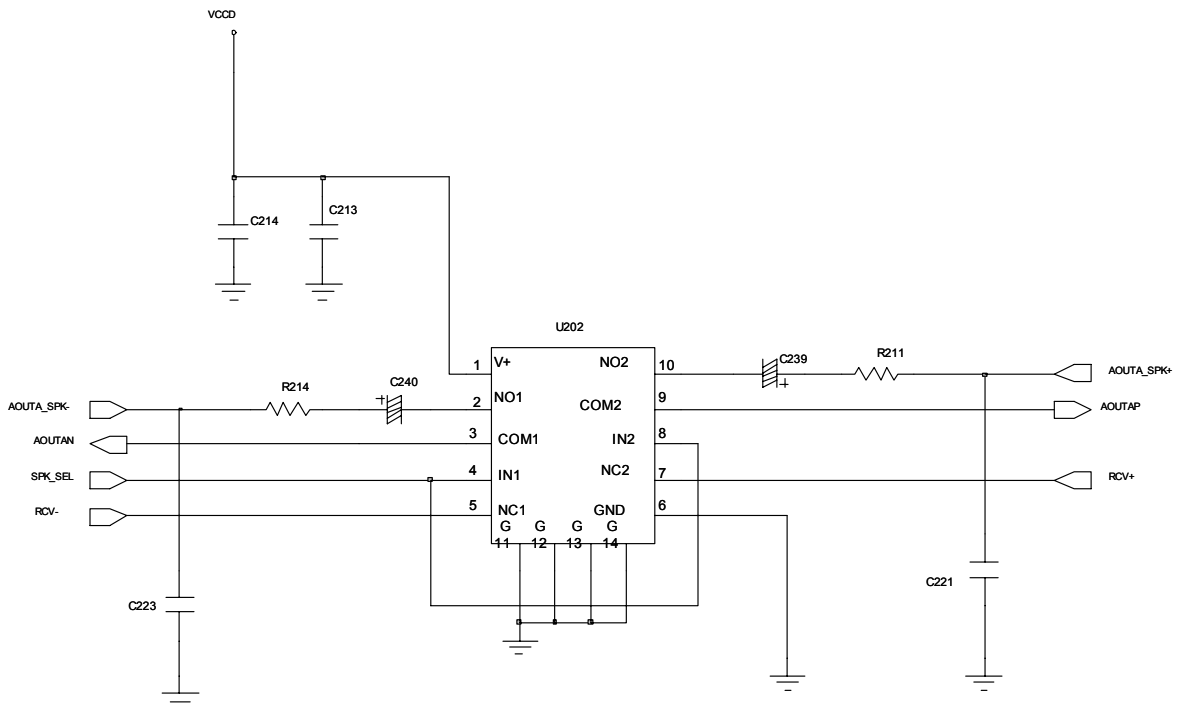
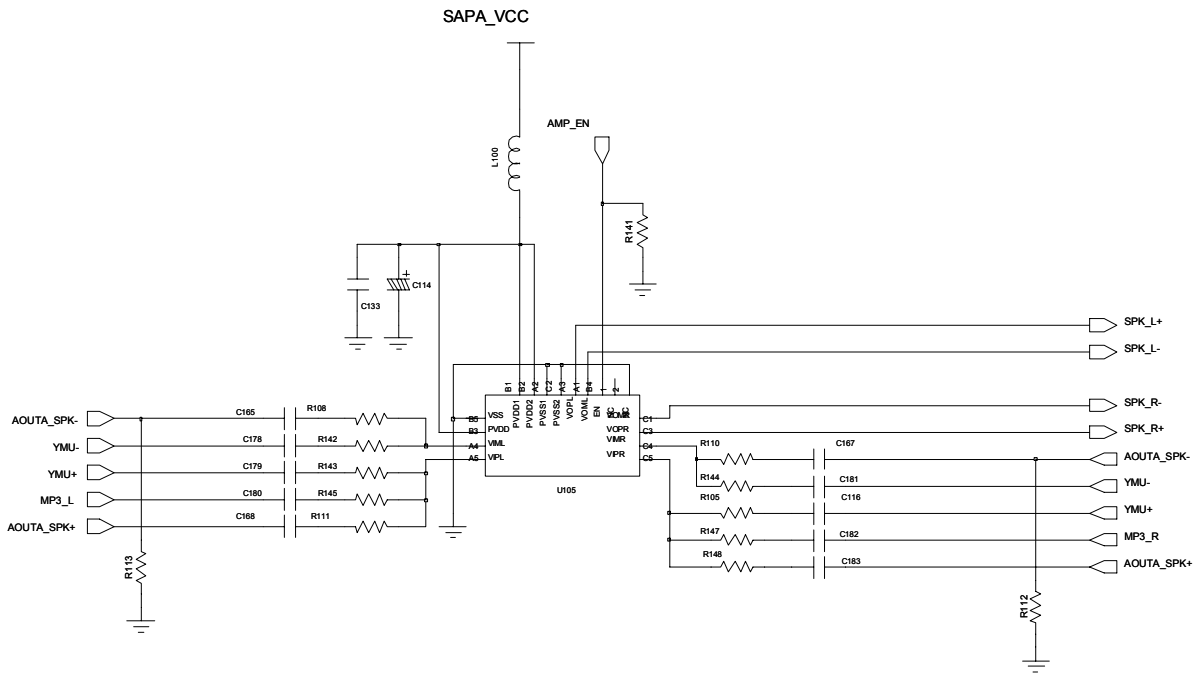
### U300



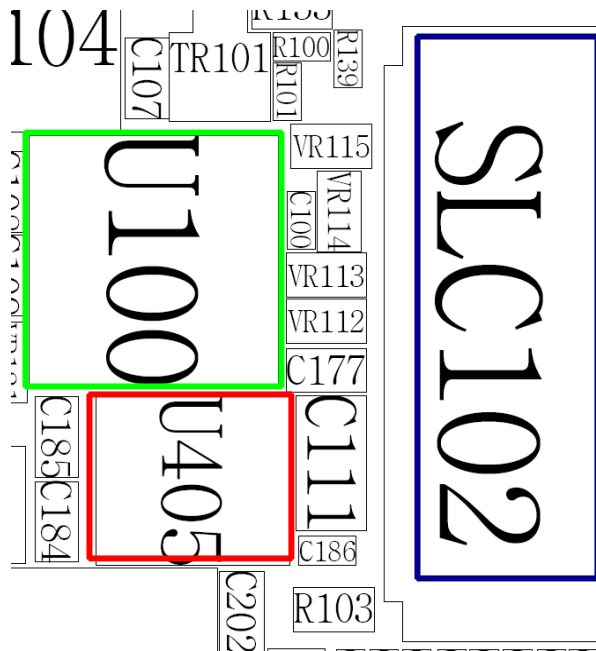
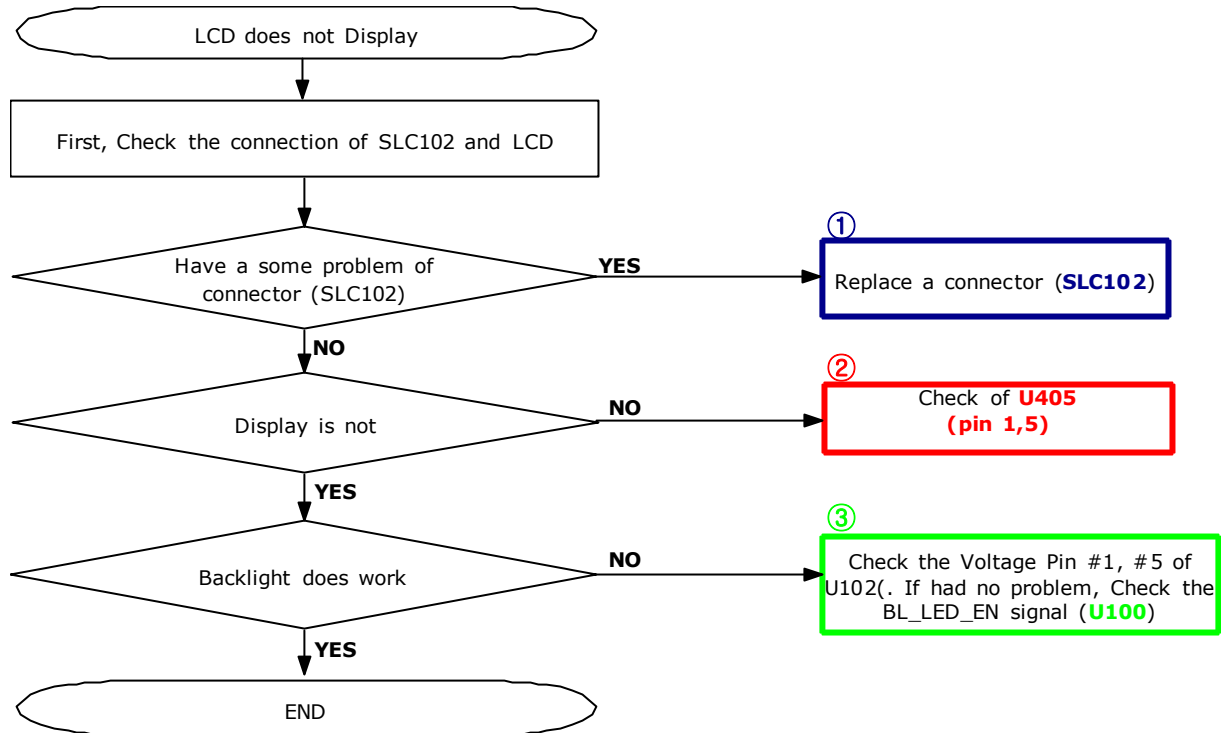
### 9-1-6. Speaker Part

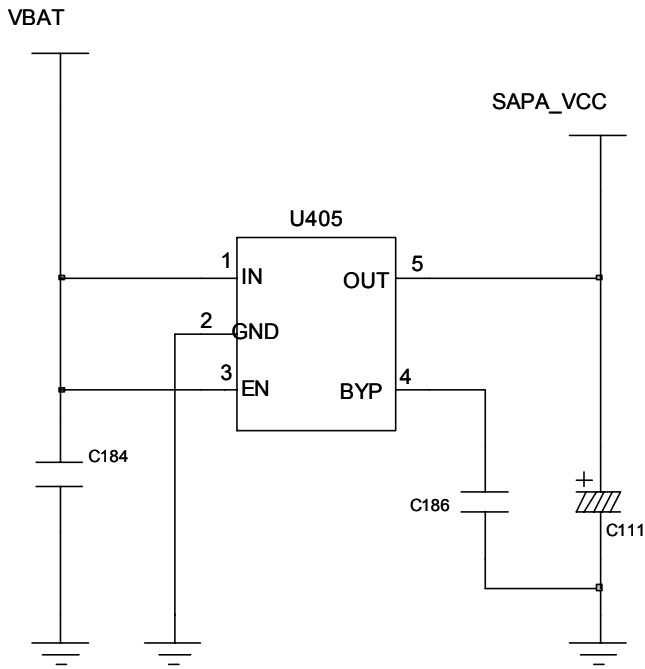
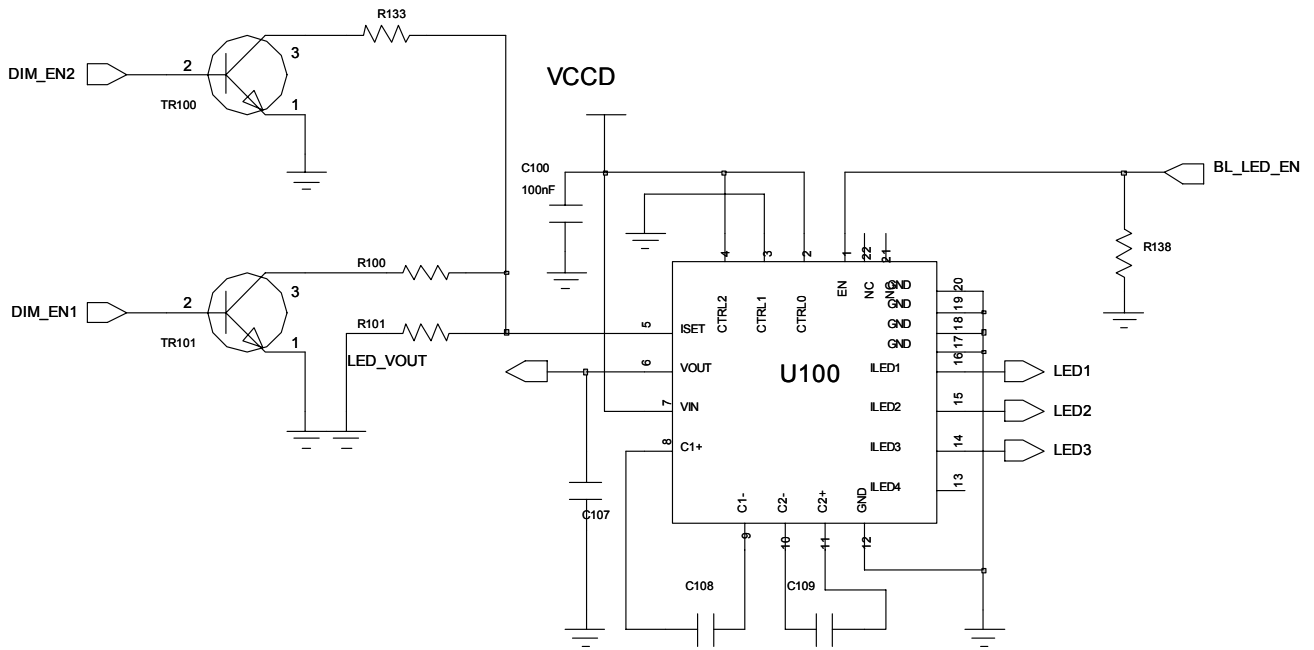






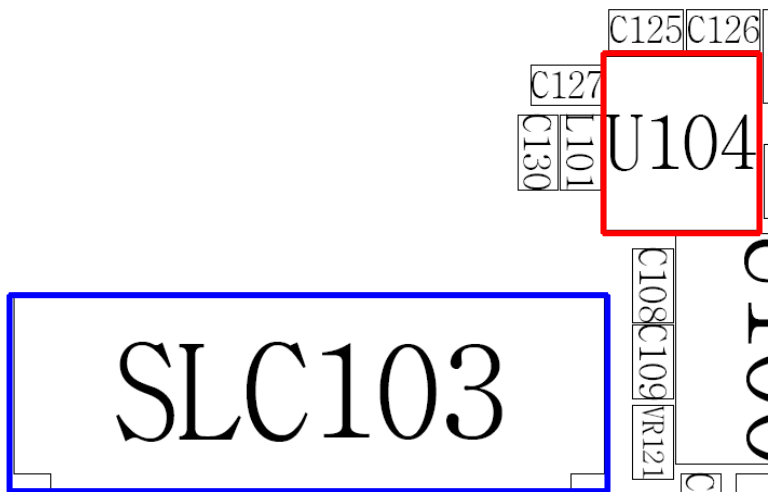
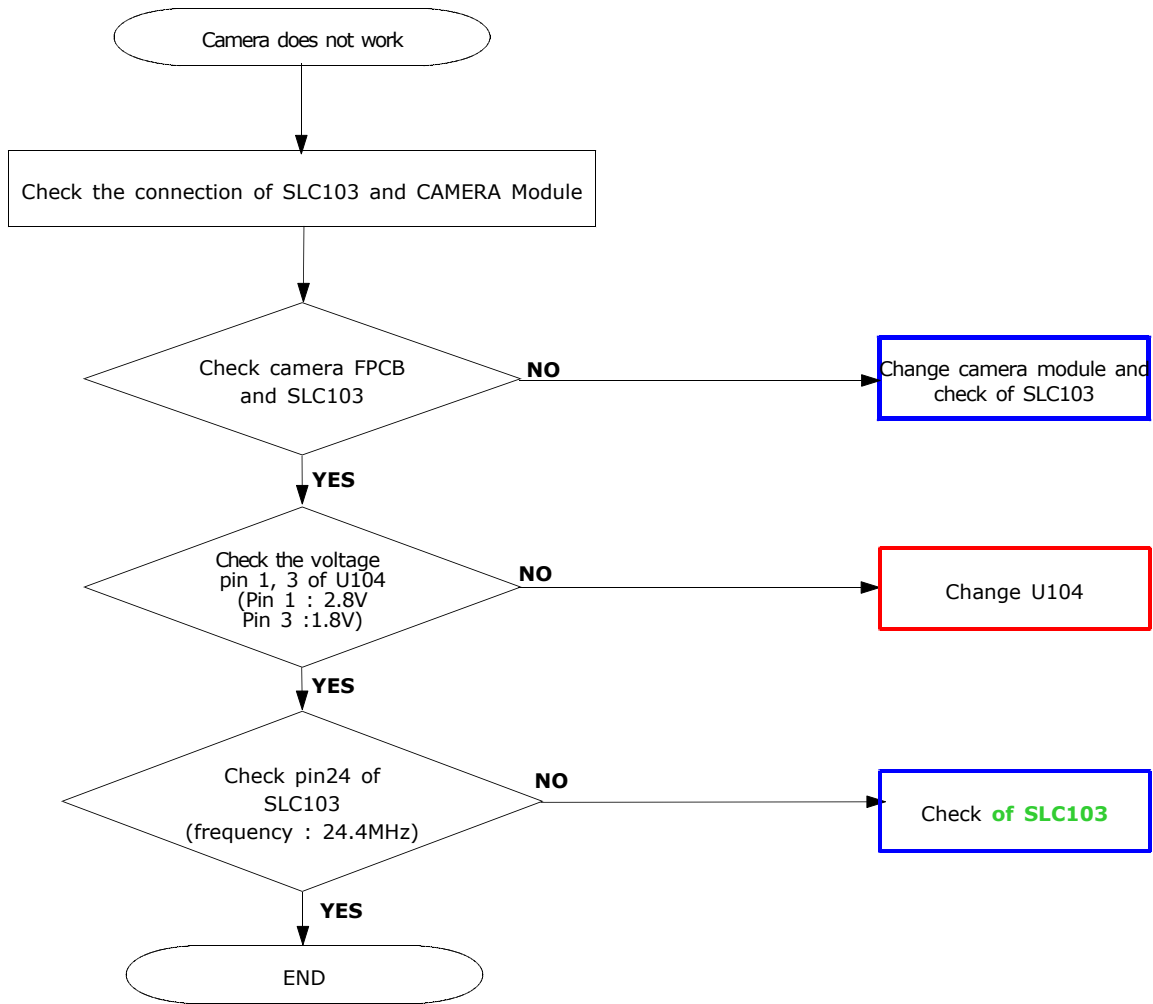
9-1-7. LCD

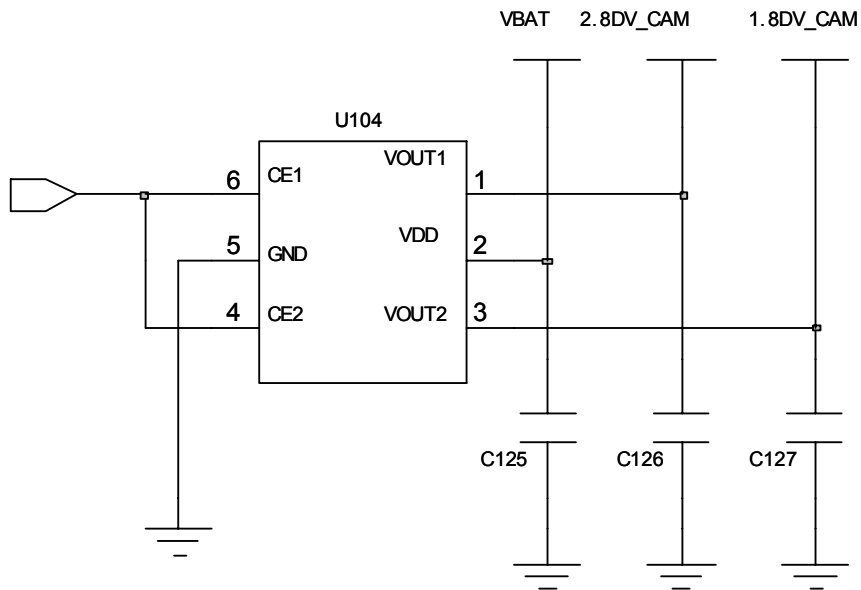
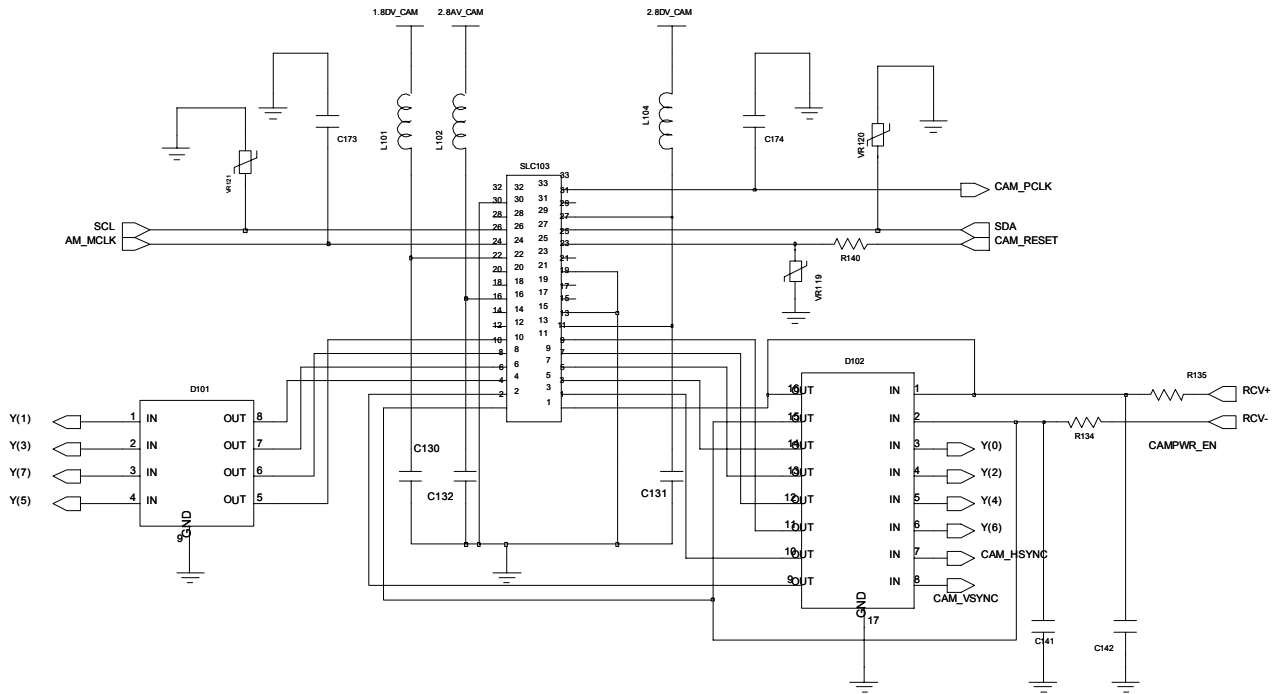






9-1-8. Camera

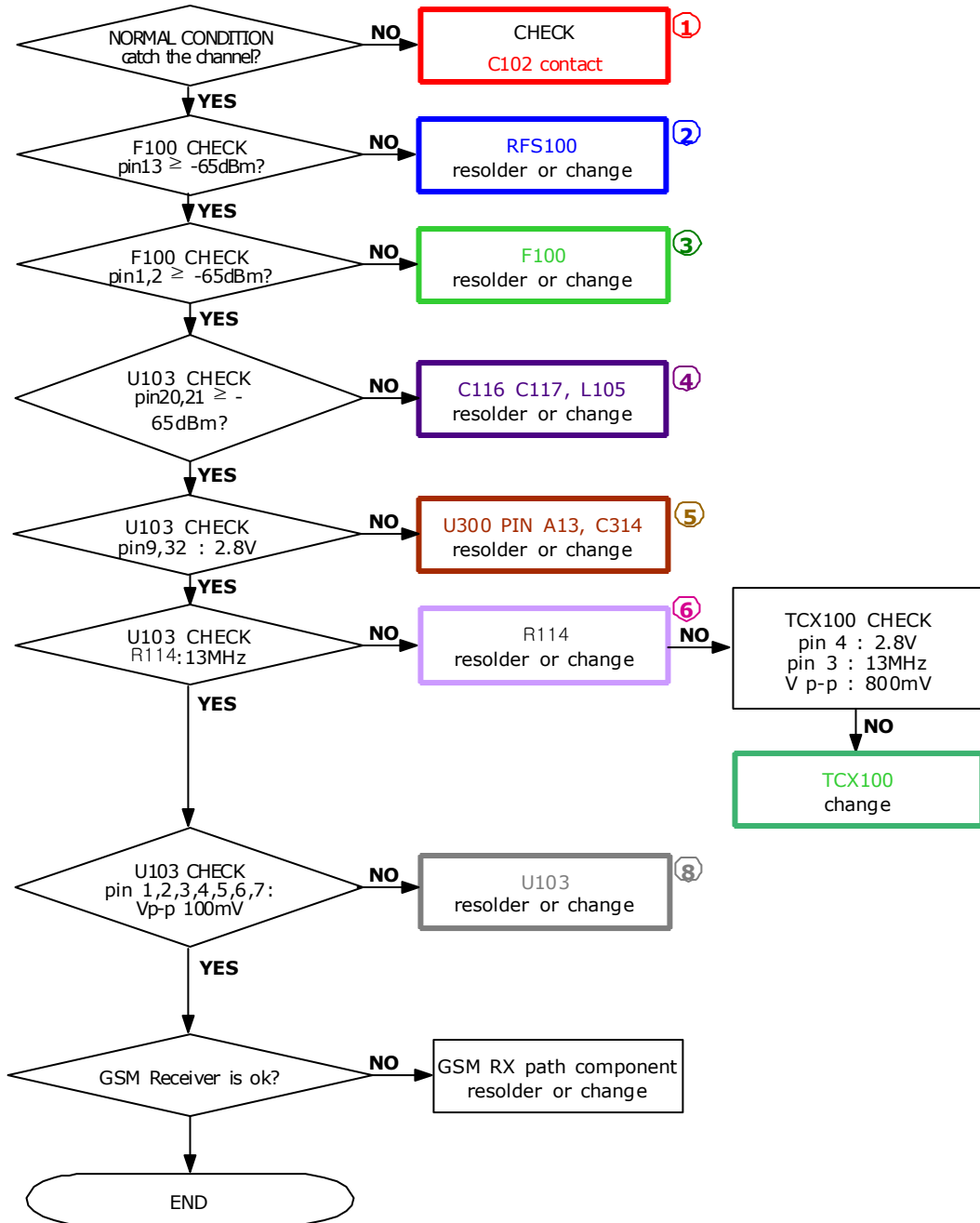




## 9-2. RF

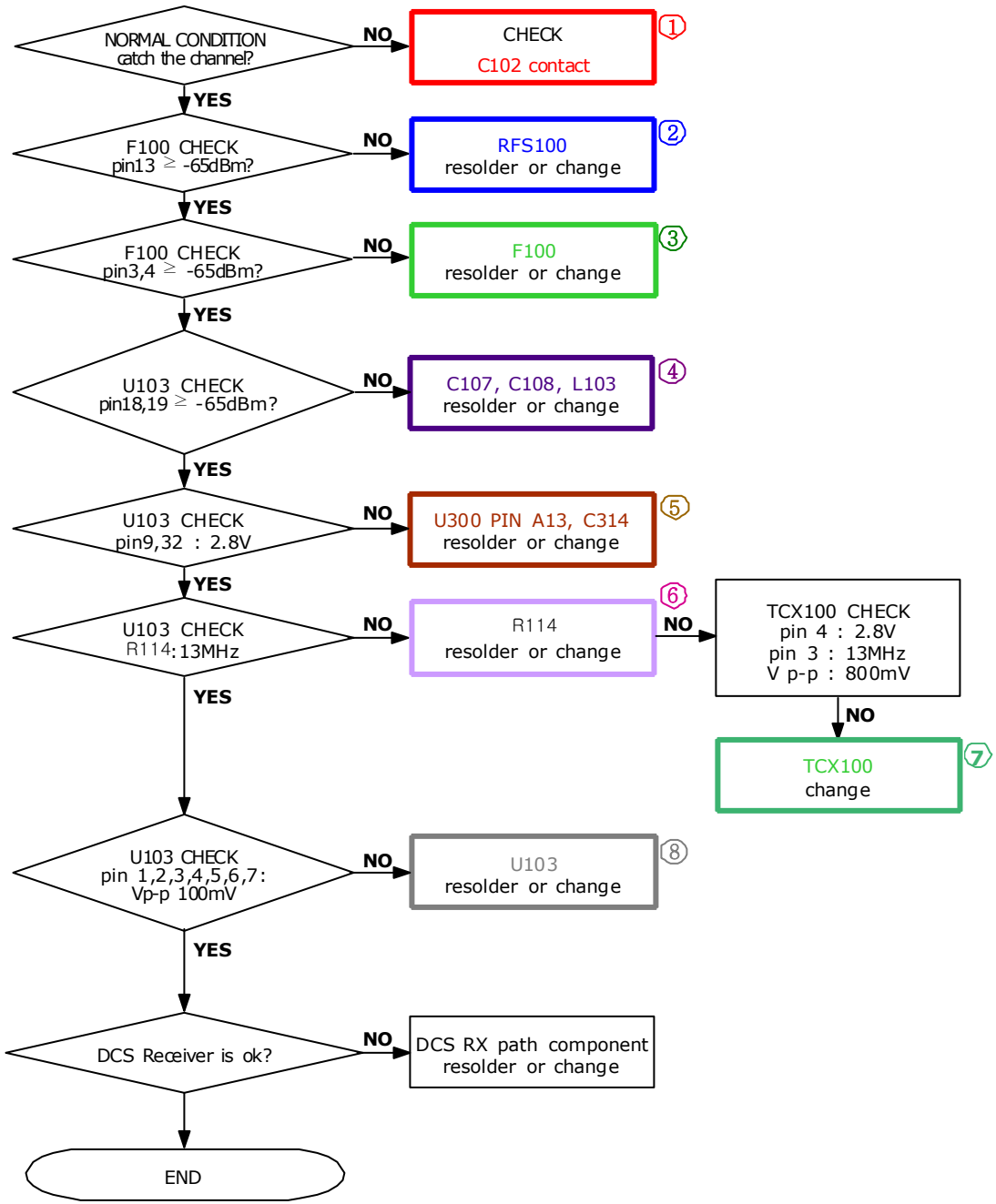
### 9-2-1. GSM Receiver

CONTINUOUS RX ON  
RF INPUT : 62CH  
Cell power : -50dBm



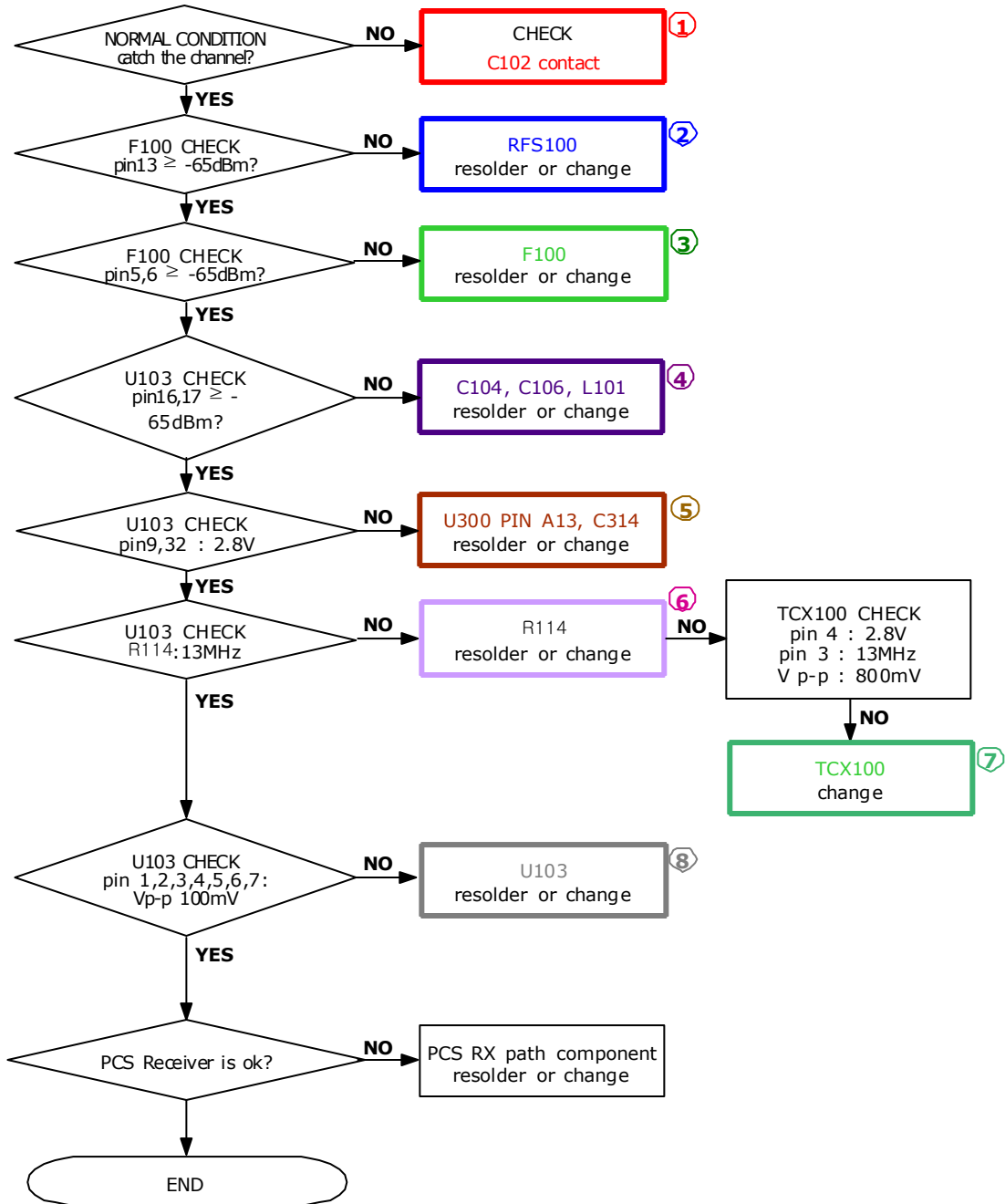
### 9-2-2. DCS Receiver

CONTINUOUS RX ON  
RF INPUT : 698CH  
Cell power : -50dBm



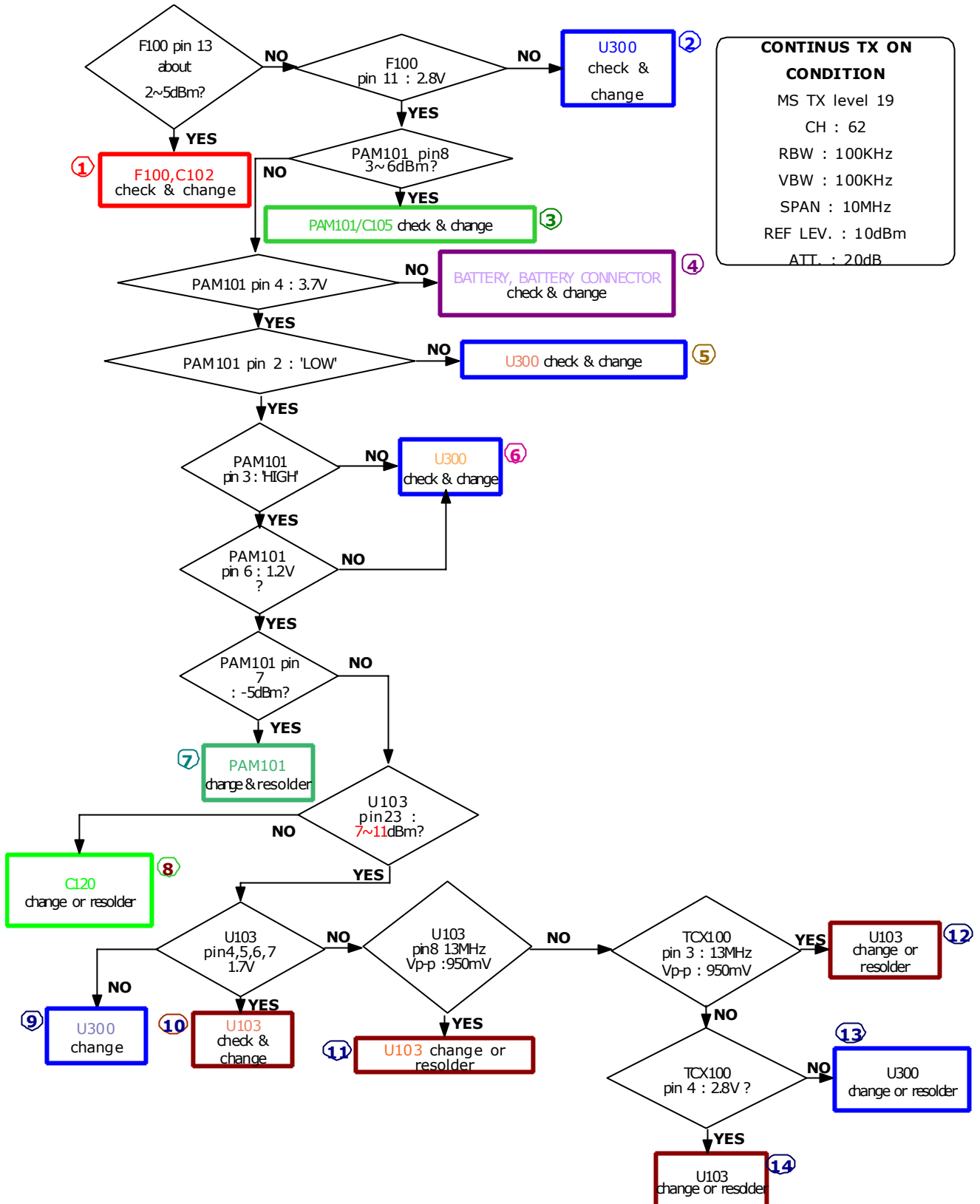
### 9-2-3. PCS Receiver

CONTINUOUS RX ON  
RF INPUT : 698CH  
Cell power : -50dBm



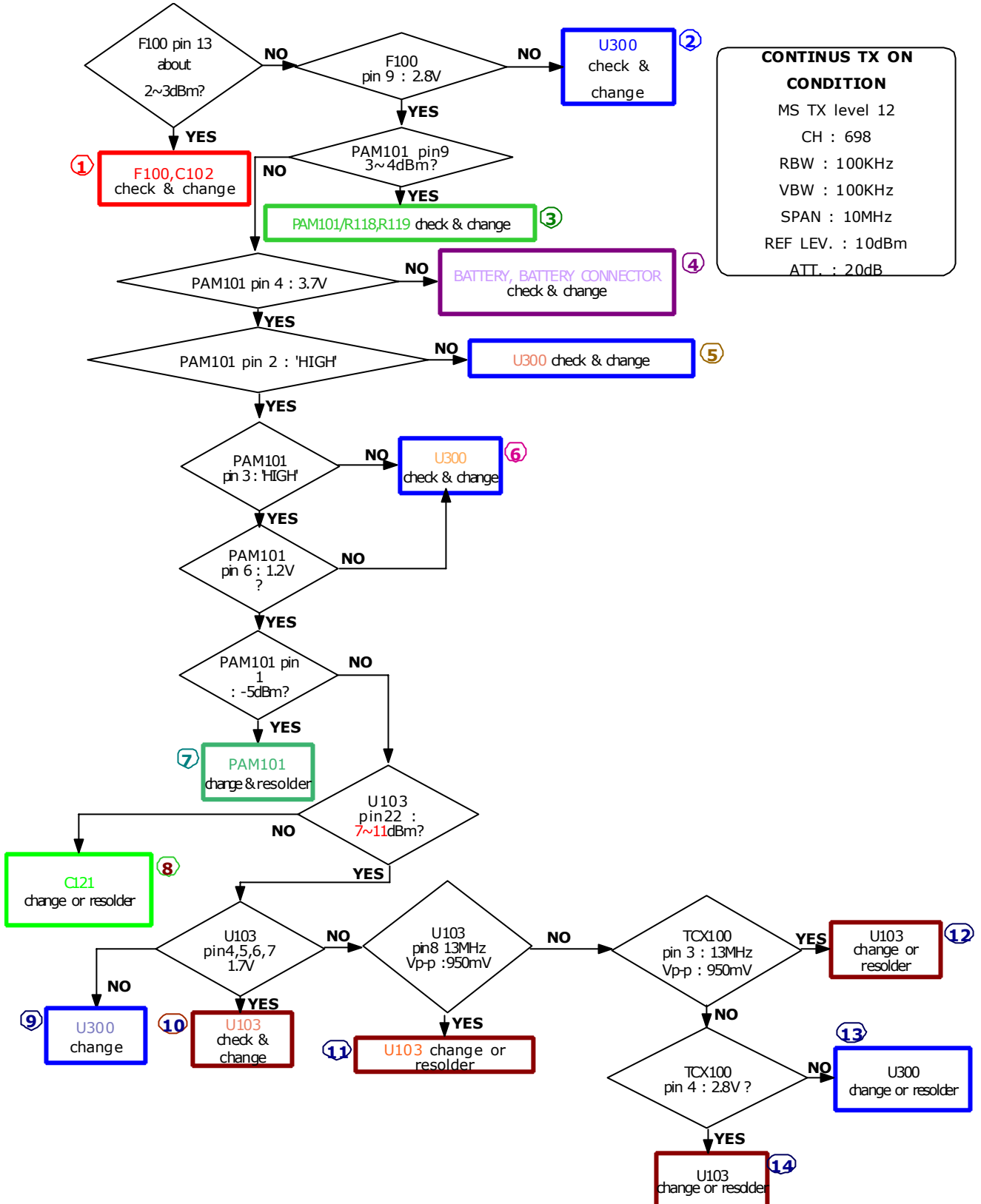


9-2-4. GSM Transmitter



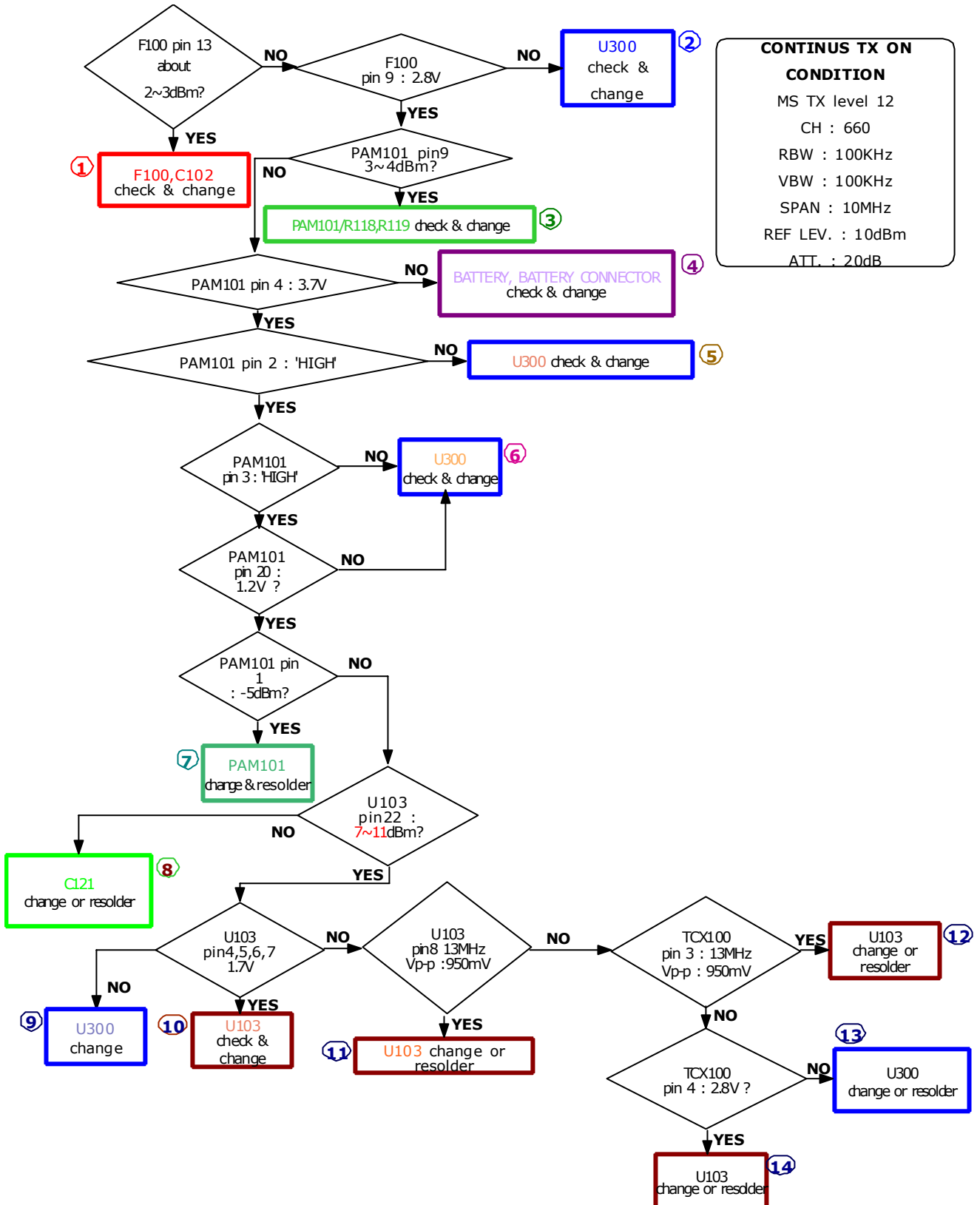
**CONTINUS TX ON  
CONDITION**  
 MS TX level 19  
 CH : 62  
 RBW : 100KHz  
 VBW : 100KHz  
 SPAN : 10MHz  
 REF LEV. : 10dBm  
 ATT. : 20dB

9-2-5. DCS Transmitter

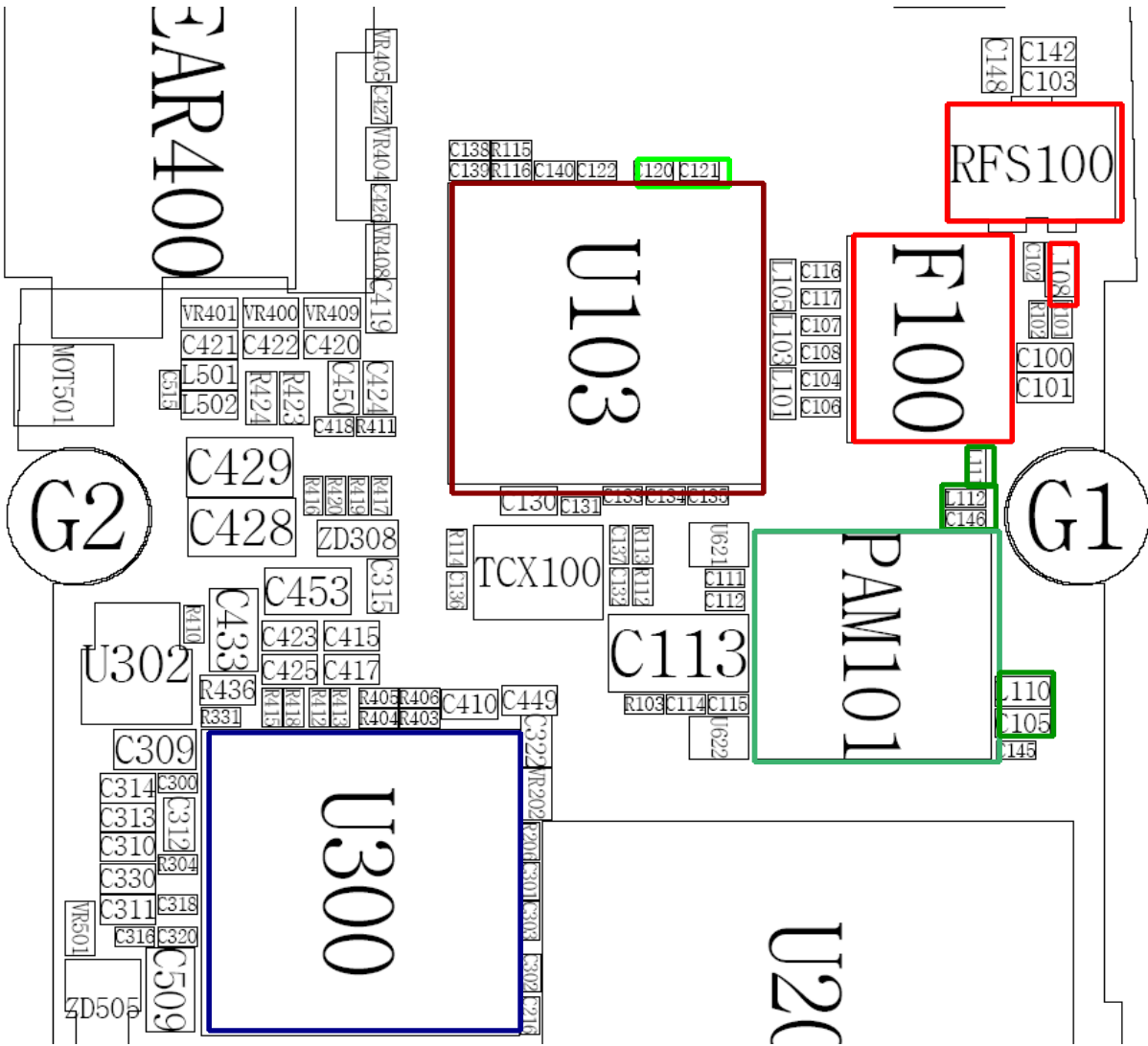




9-2-6. PCS Transmitter



**CONTINUS TX ON  
CONDITION**  
 MS TX level 12  
 CH : 660  
 RBW : 100KHz  
 VBW : 100KHz  
 SPAN : 10MHz  
 REF LEV. : 10dBm  
 ATT. : 20dB



## 9-2-7. Bluetooth Part

