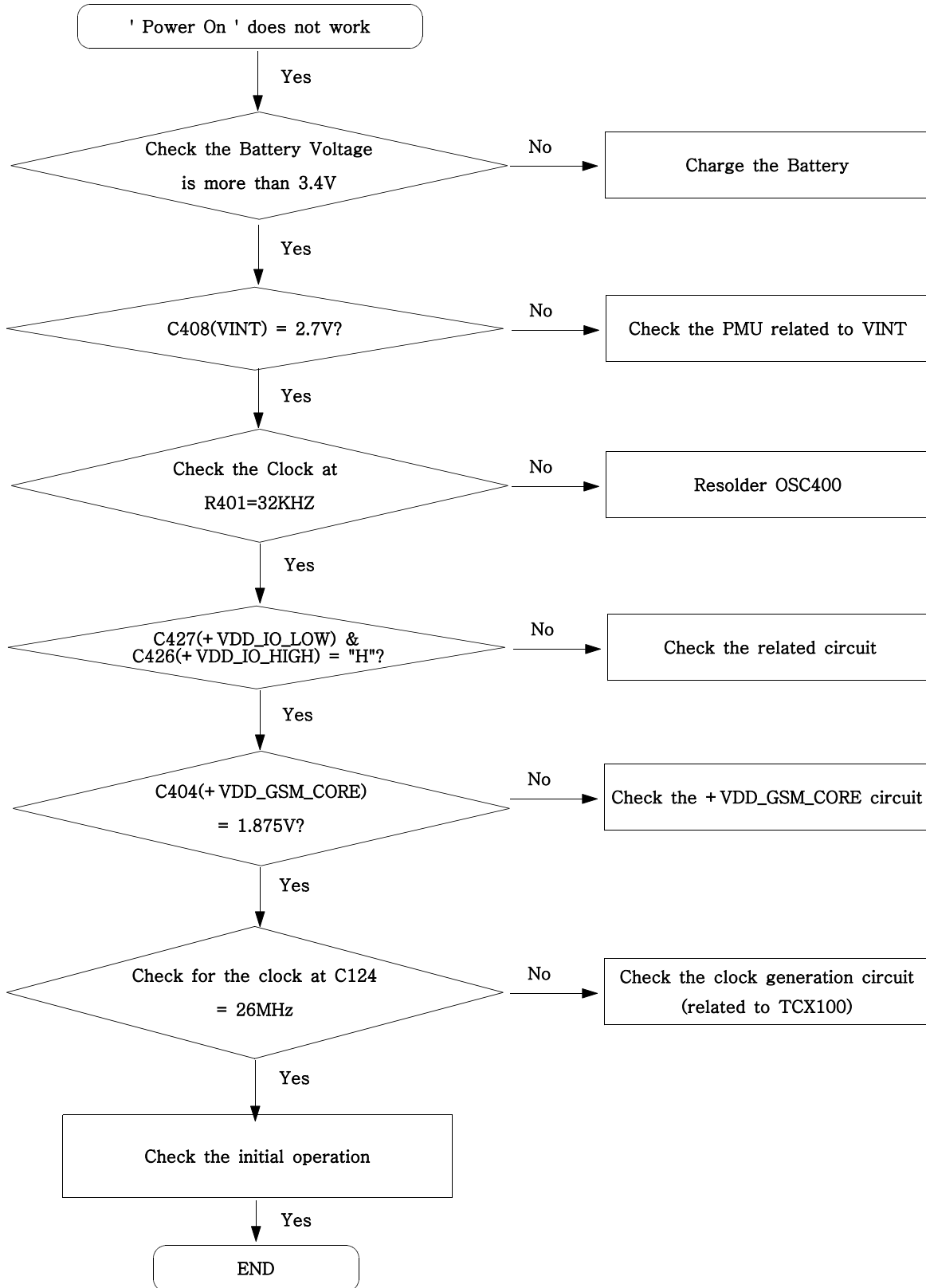
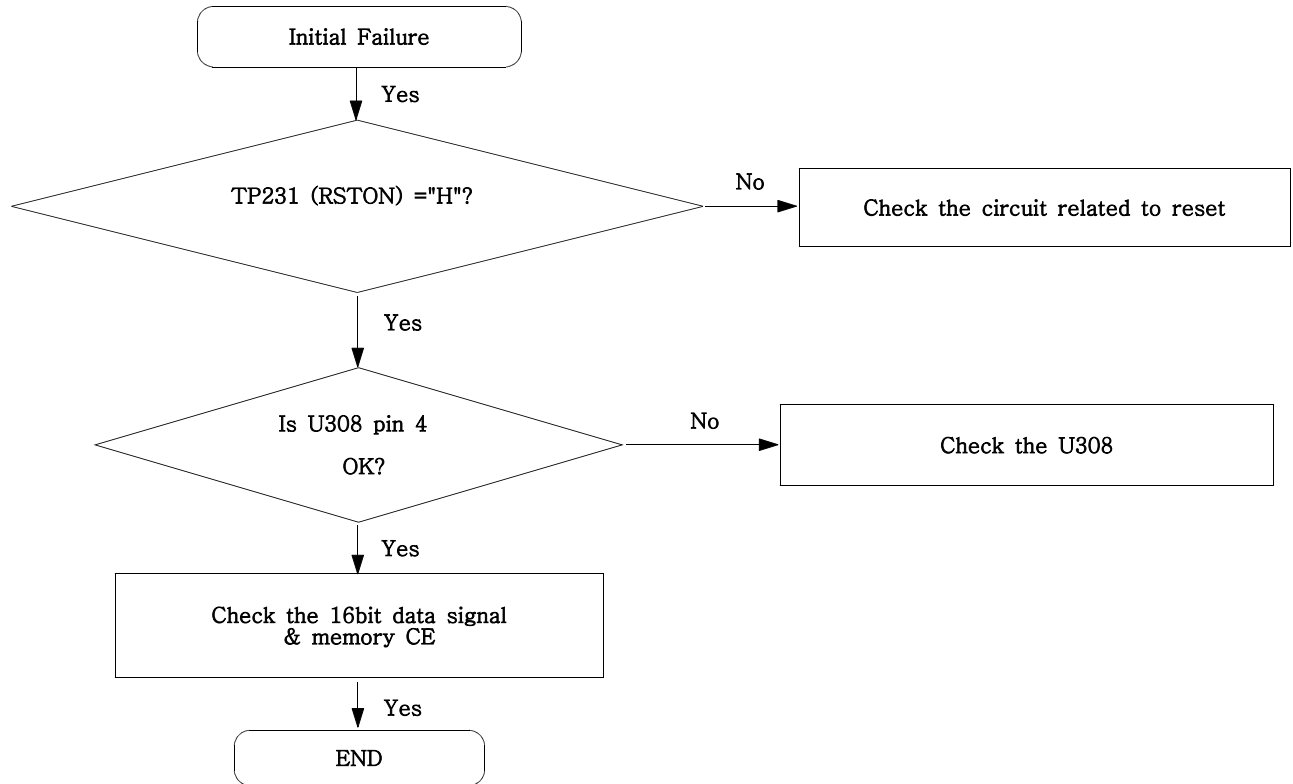


7. Flow Chart of Troubleshooting

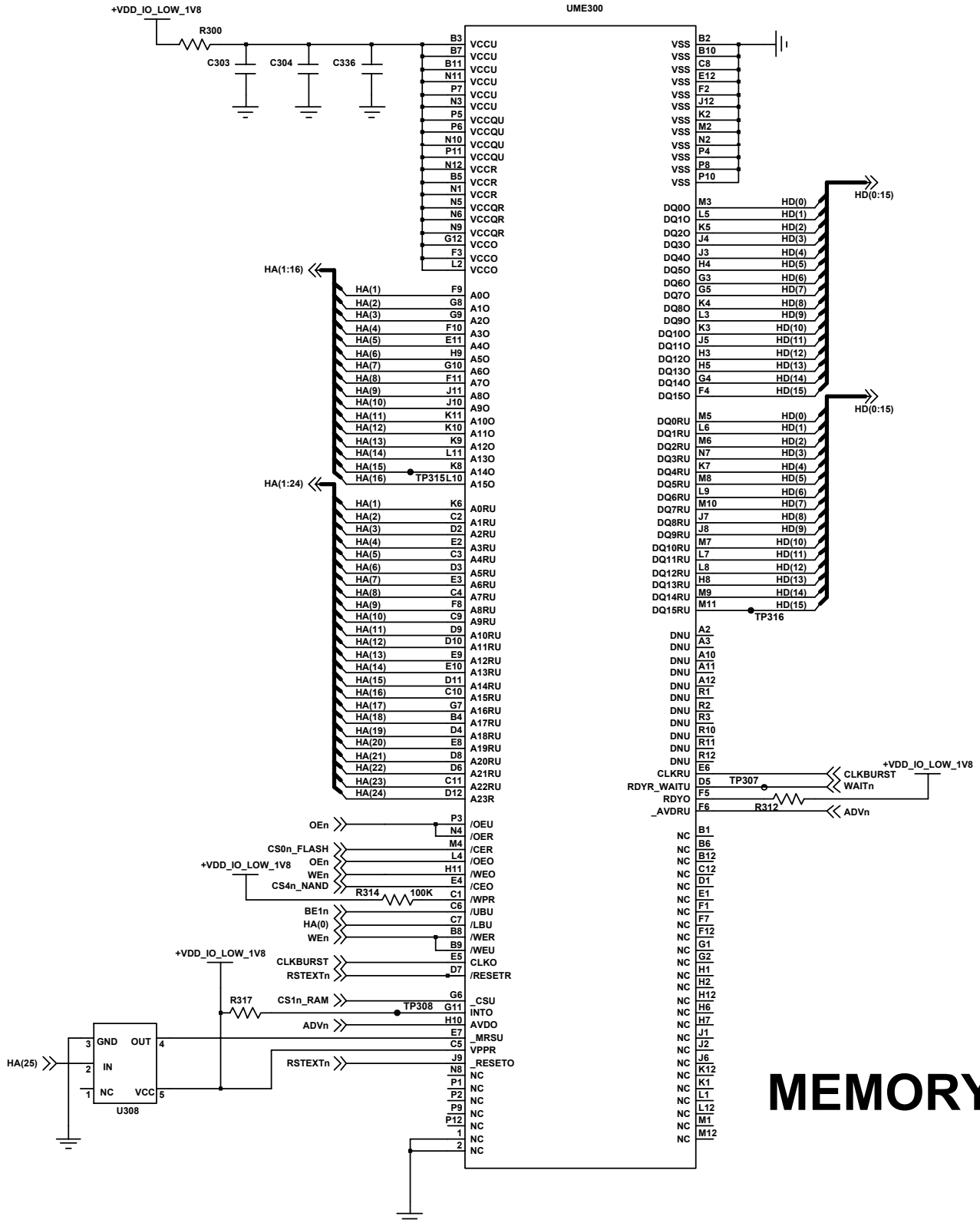
7-1. Power On



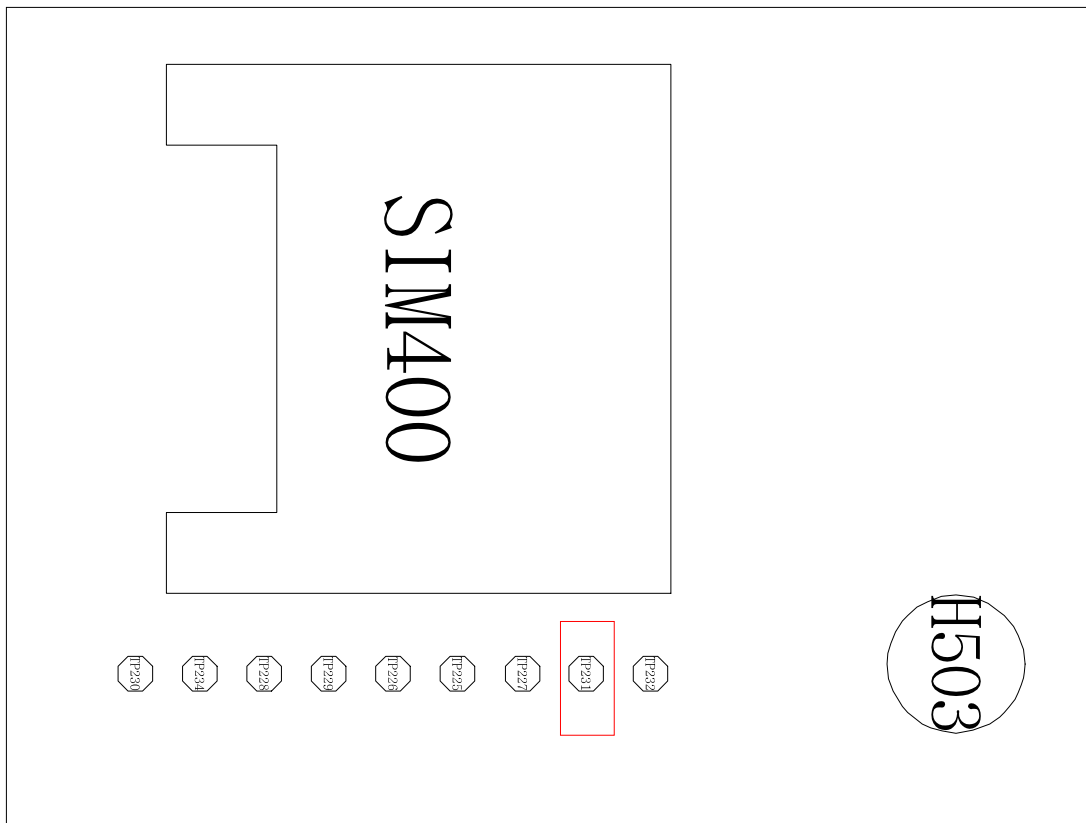
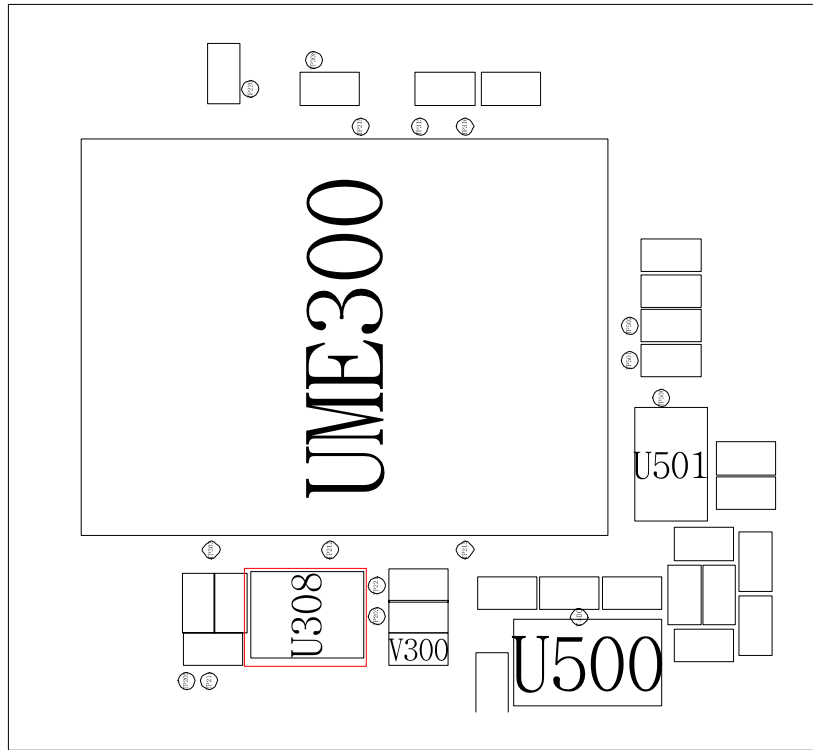
7-2. Initial



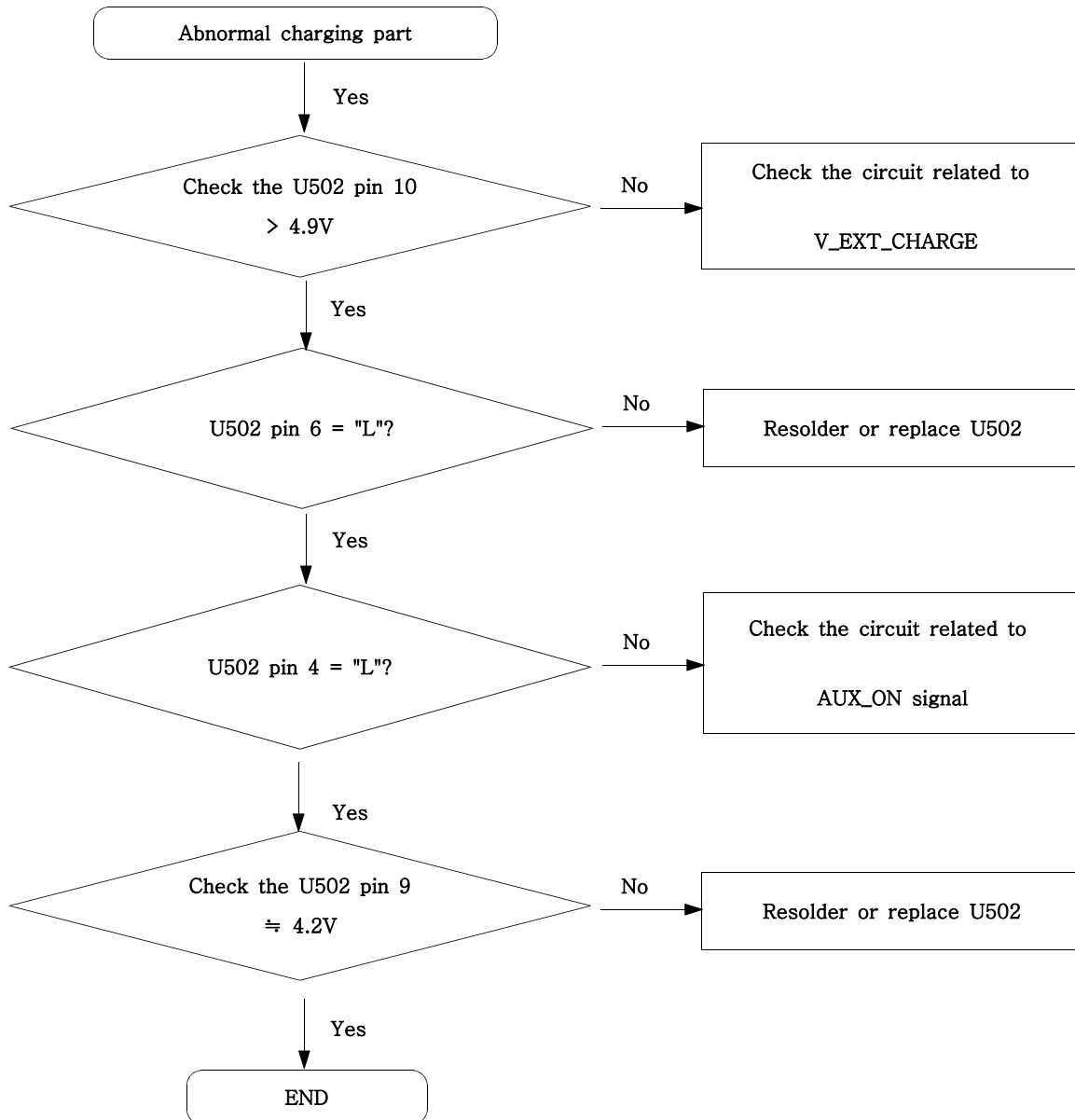
Flow Chart of Troubleshooting

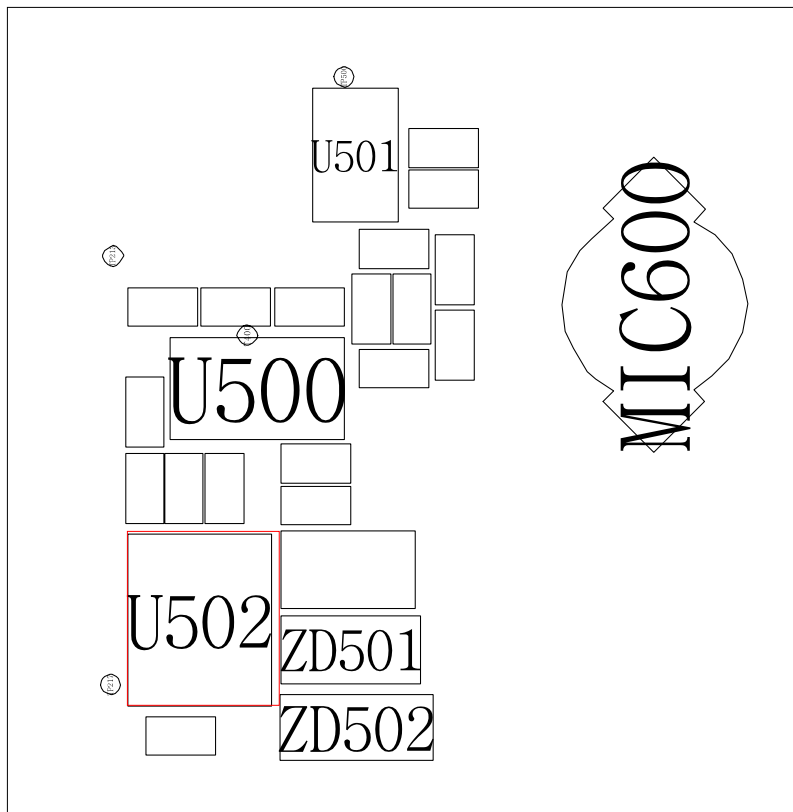
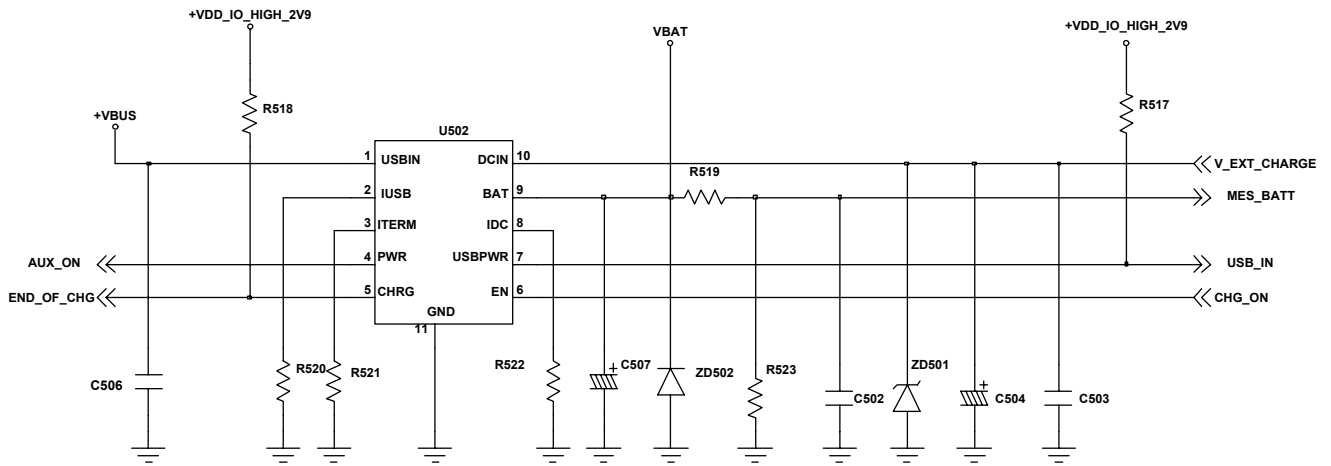


MEMORY

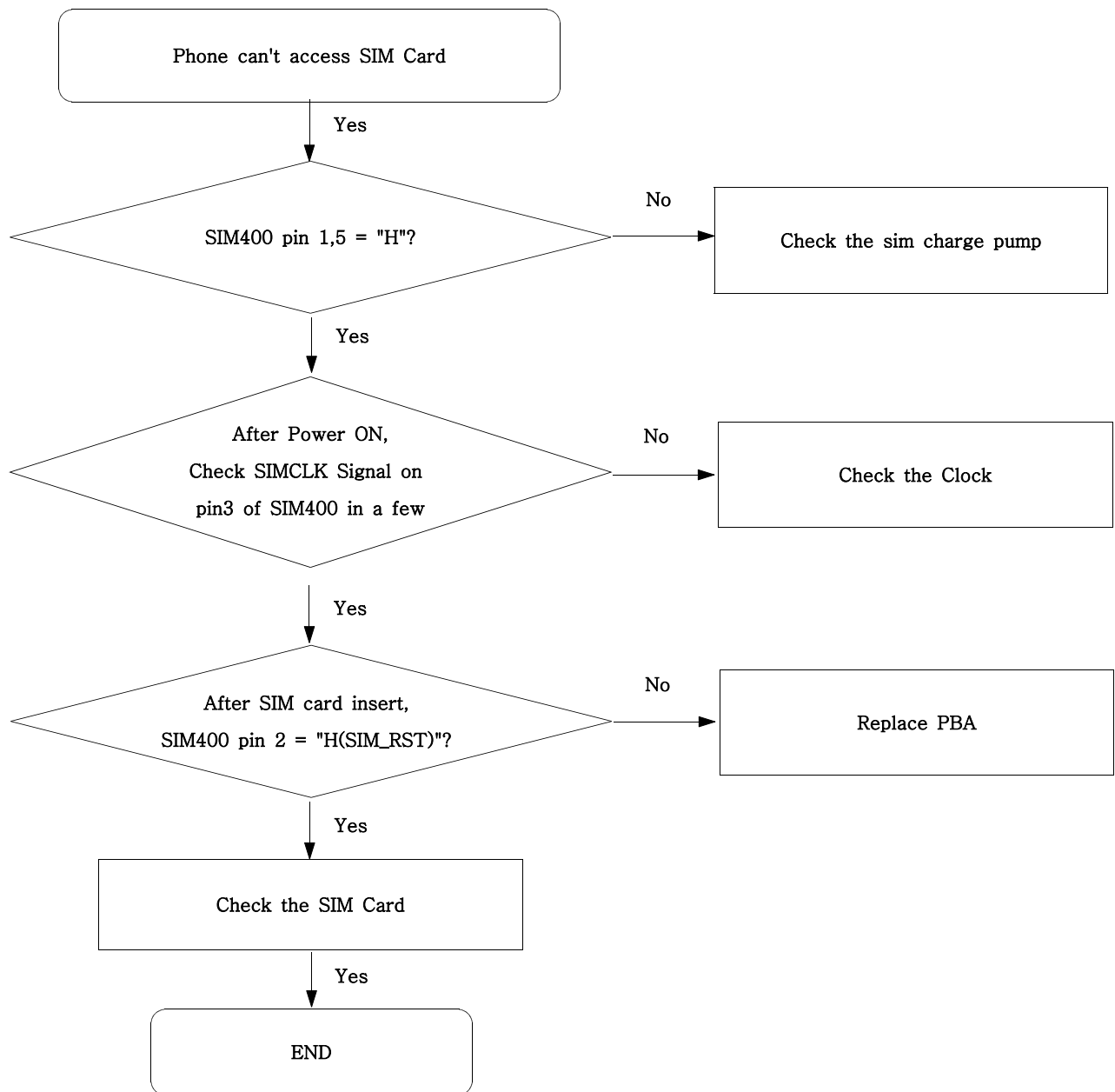


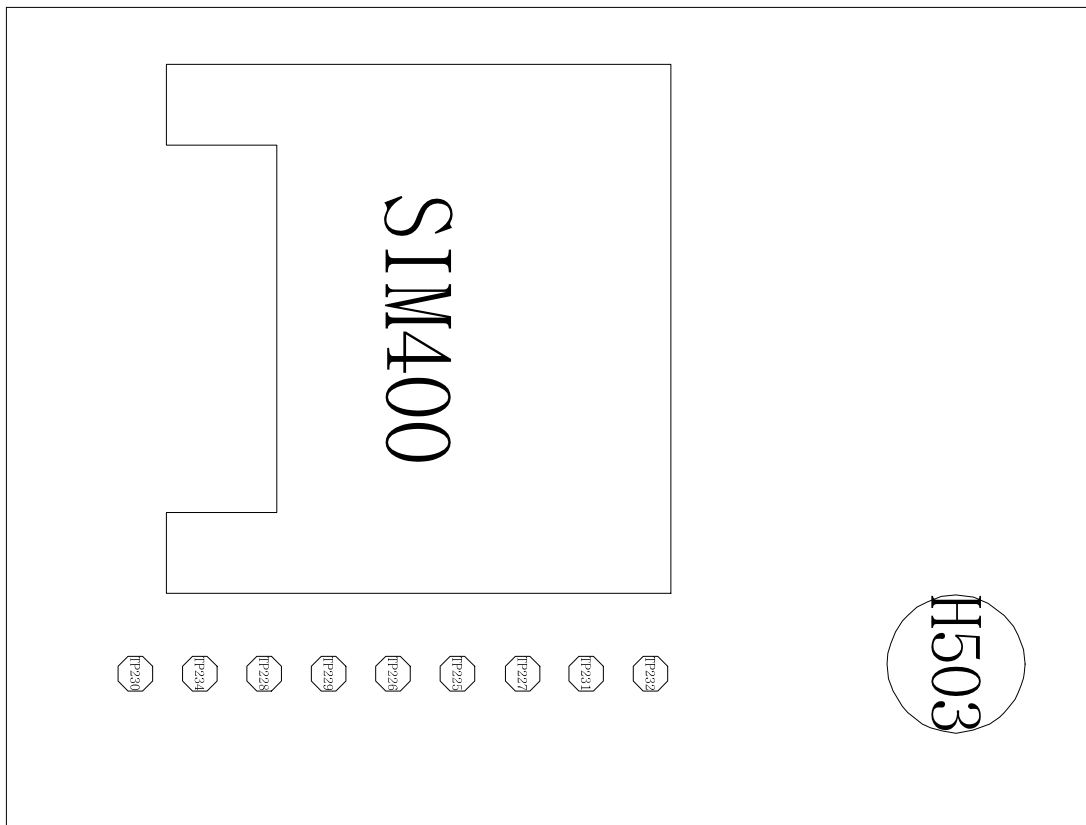
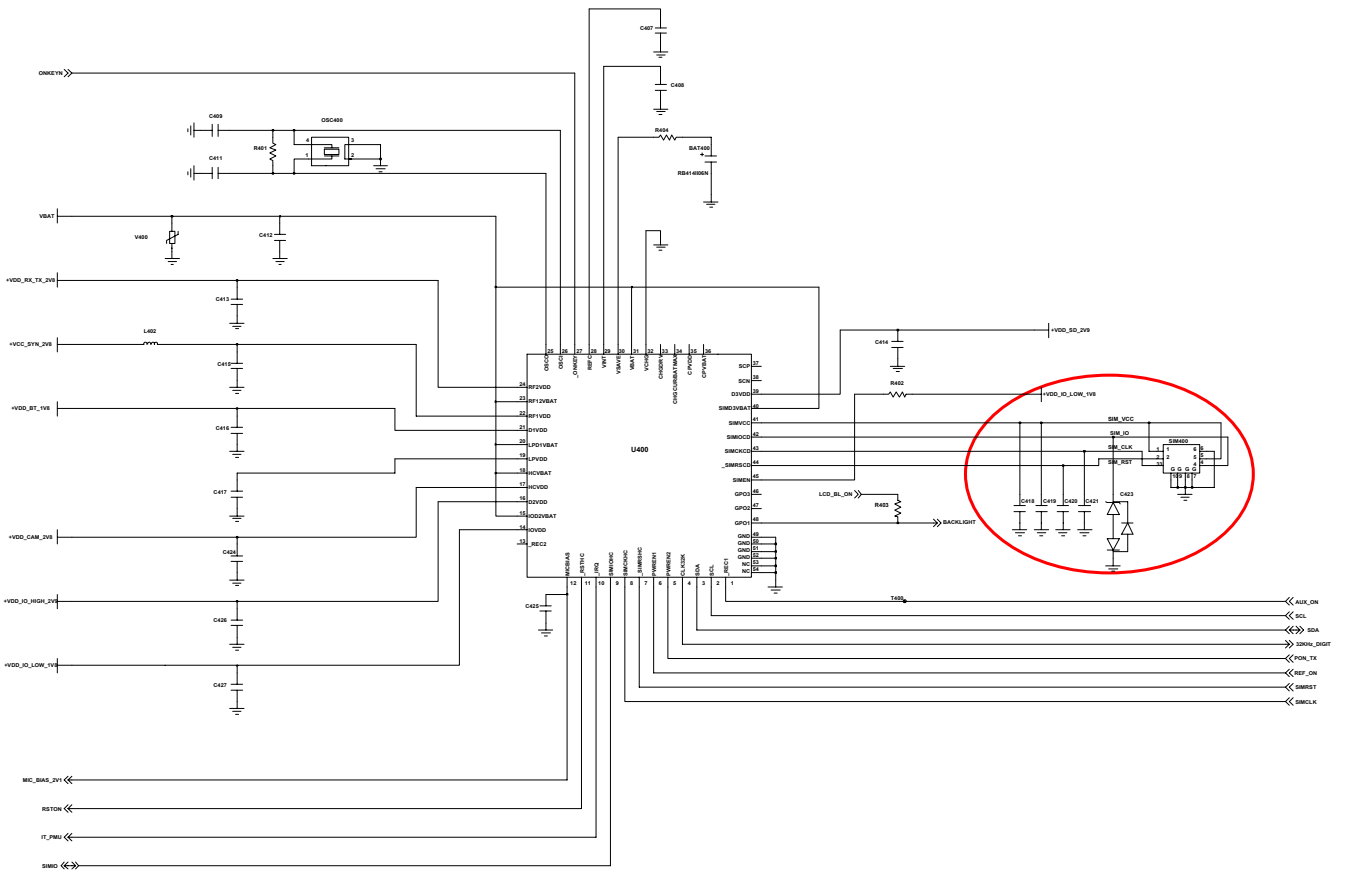
7-3. Charging Part



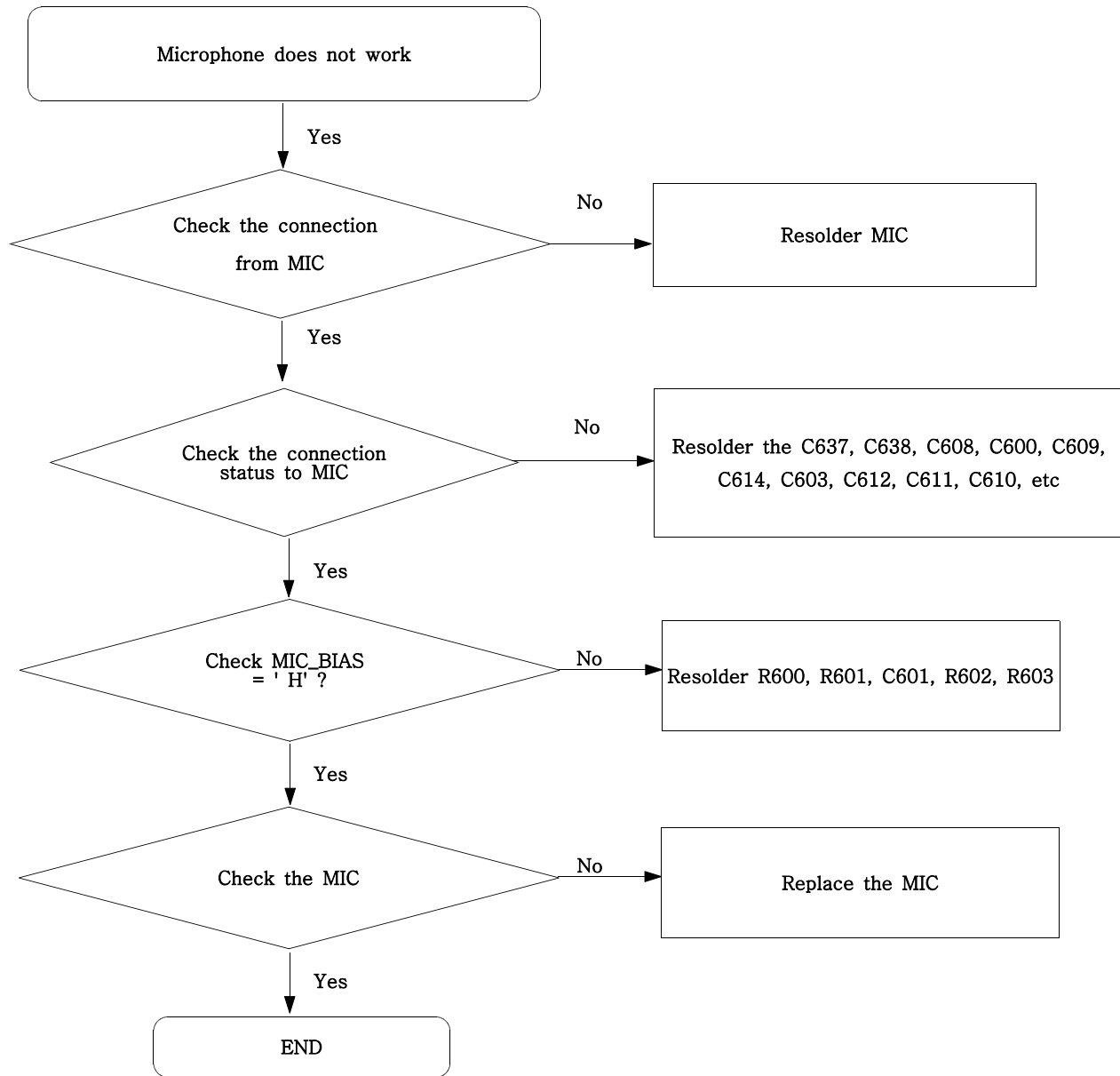


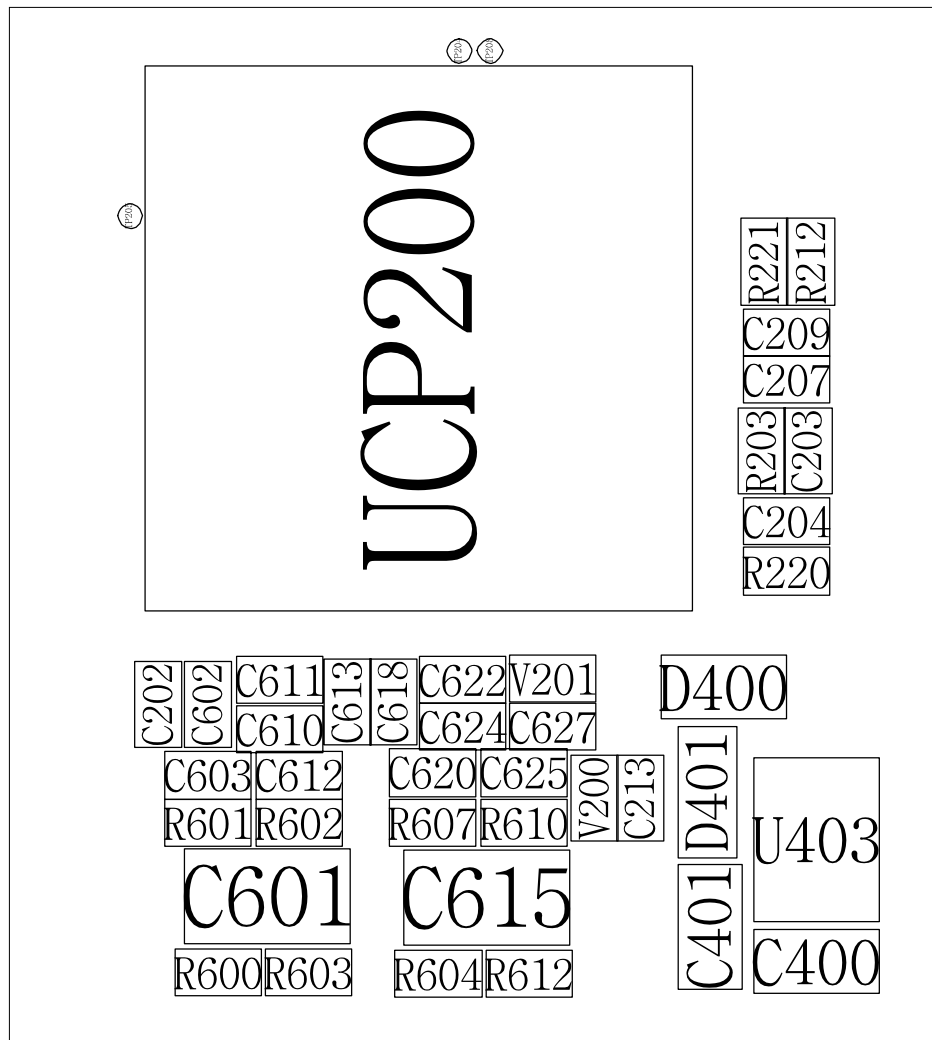
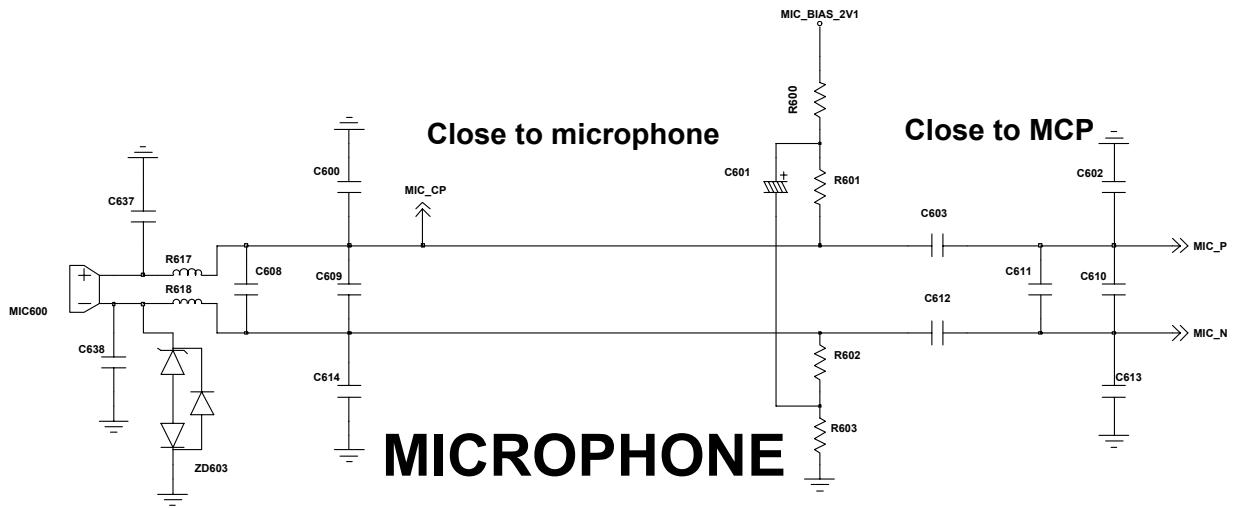
7-4. Sim Part



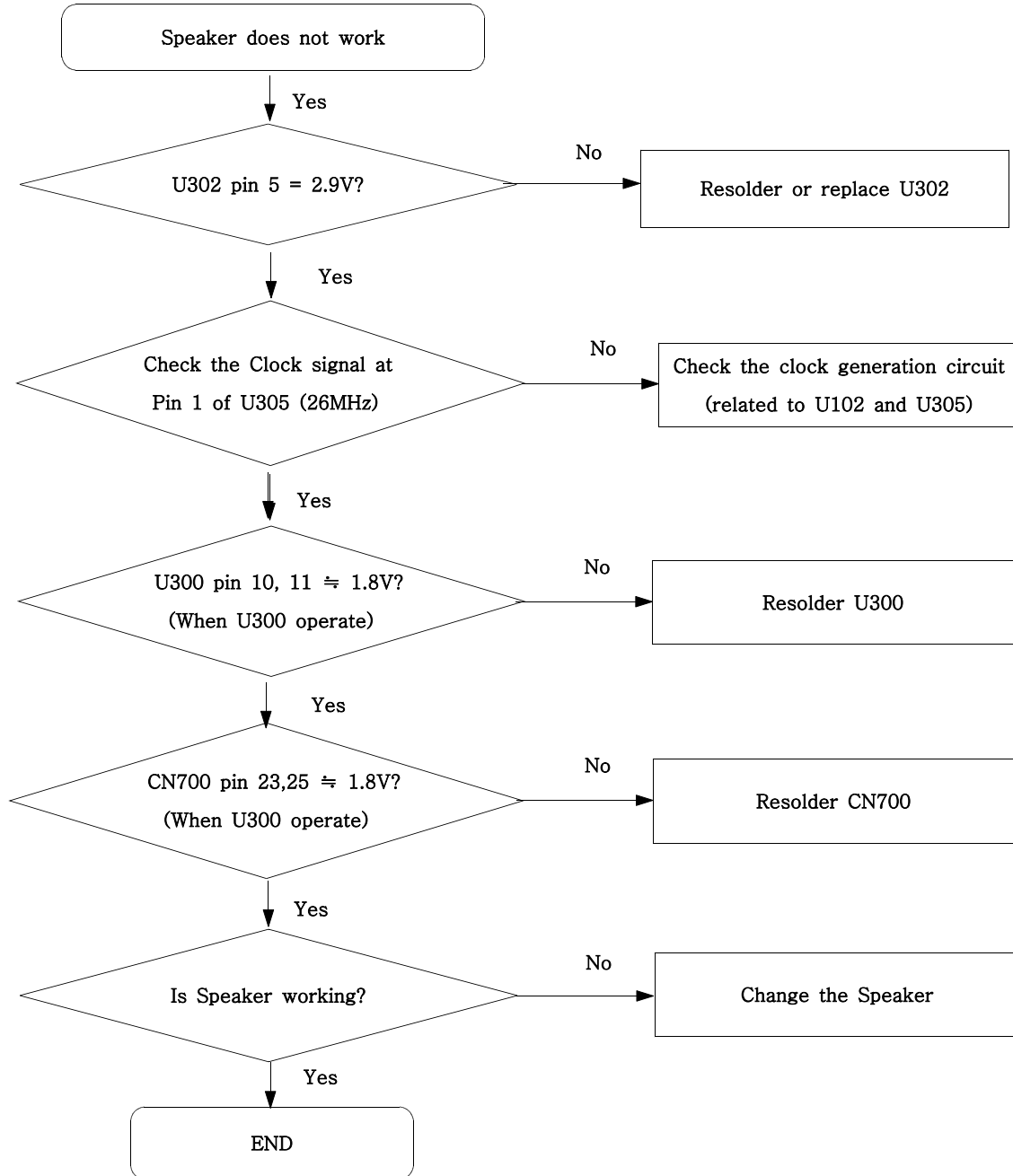


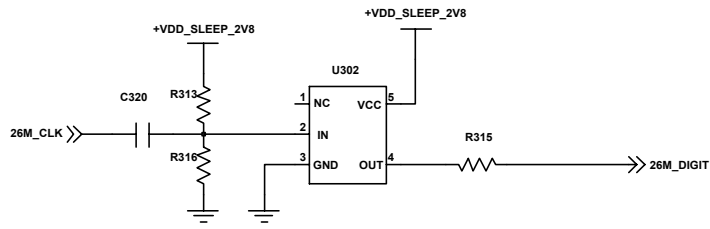
7-5. Microphone Part



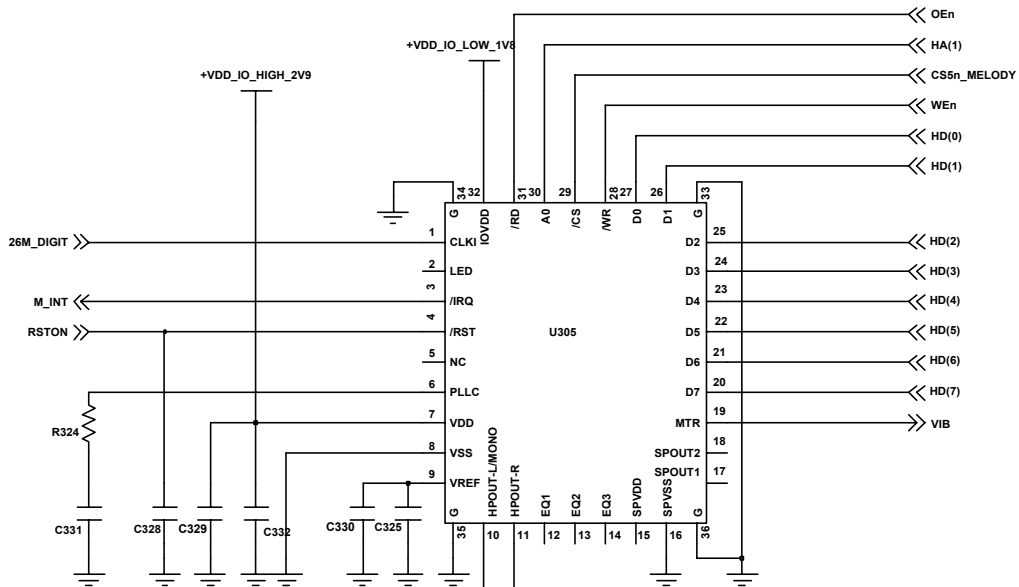


7-6. Speaker Part(Melody)

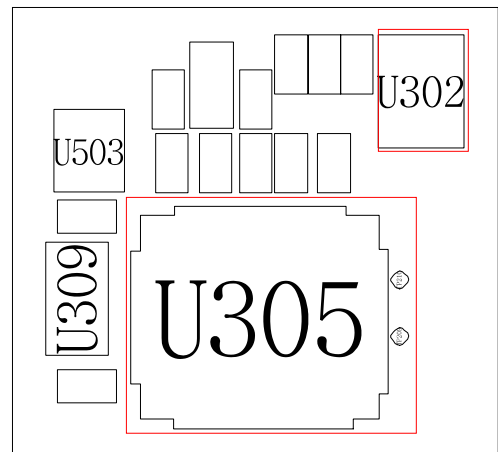
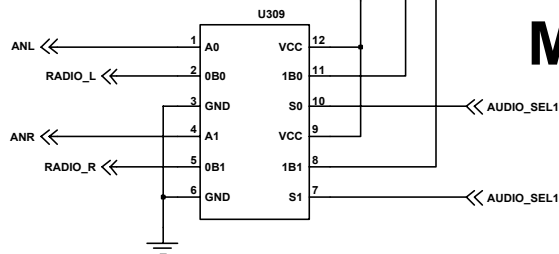




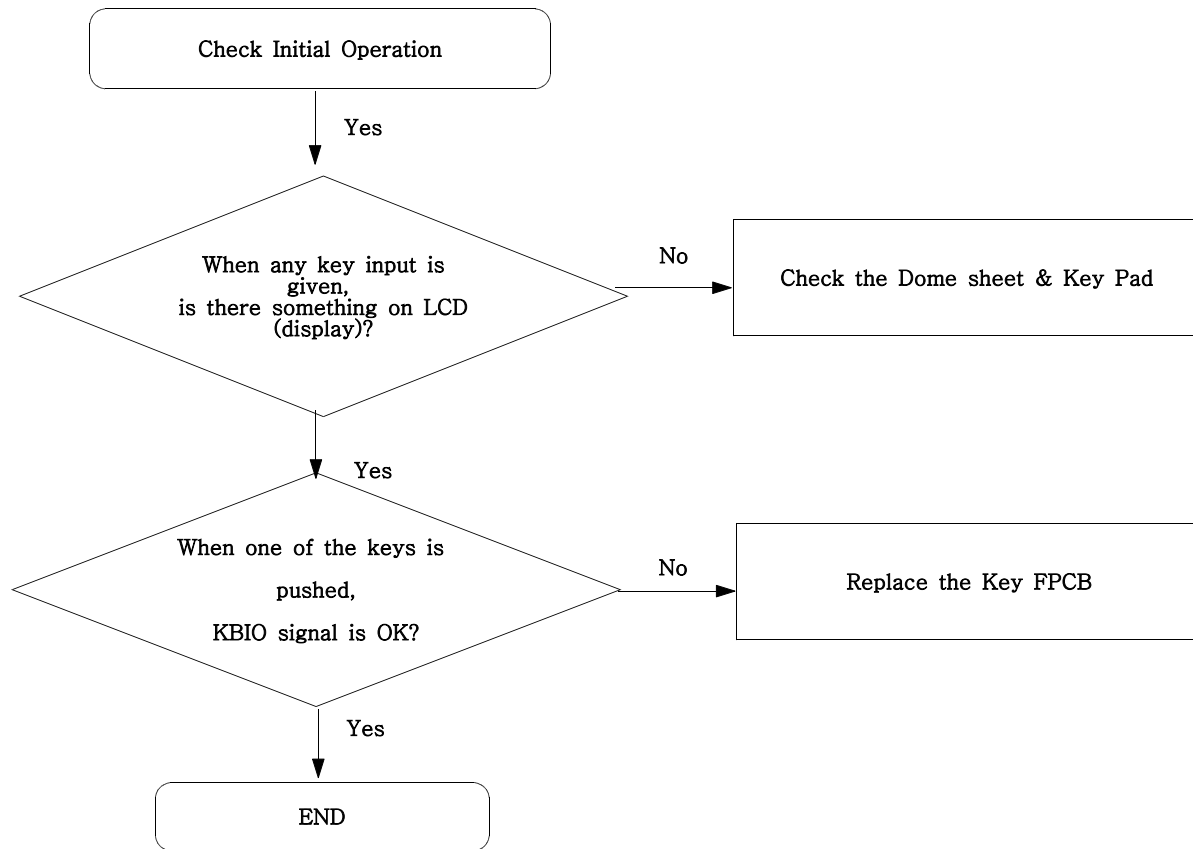
MEMORY

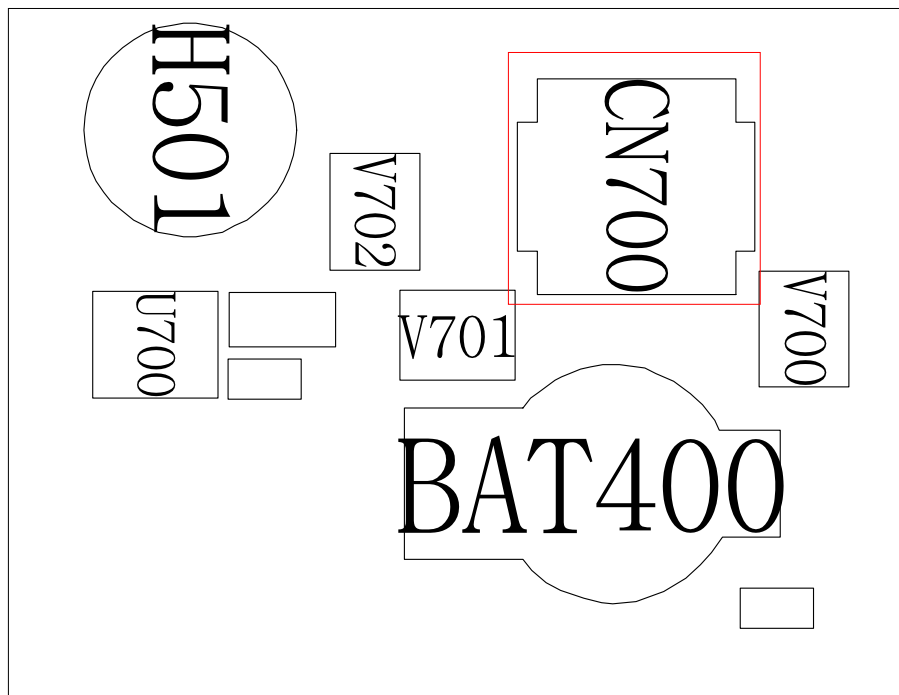
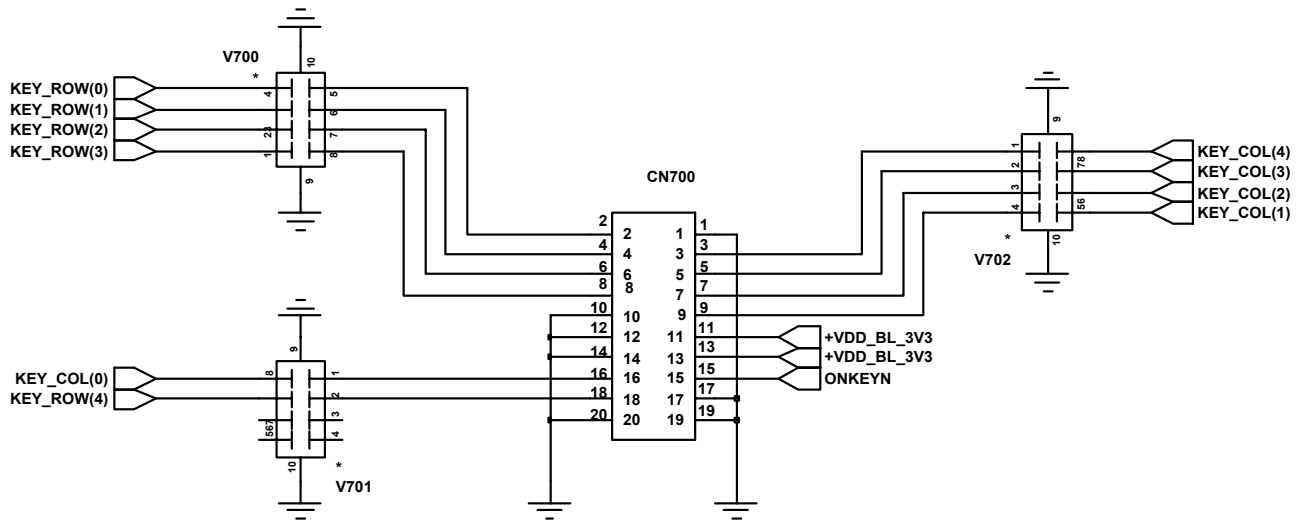


MELODY IC

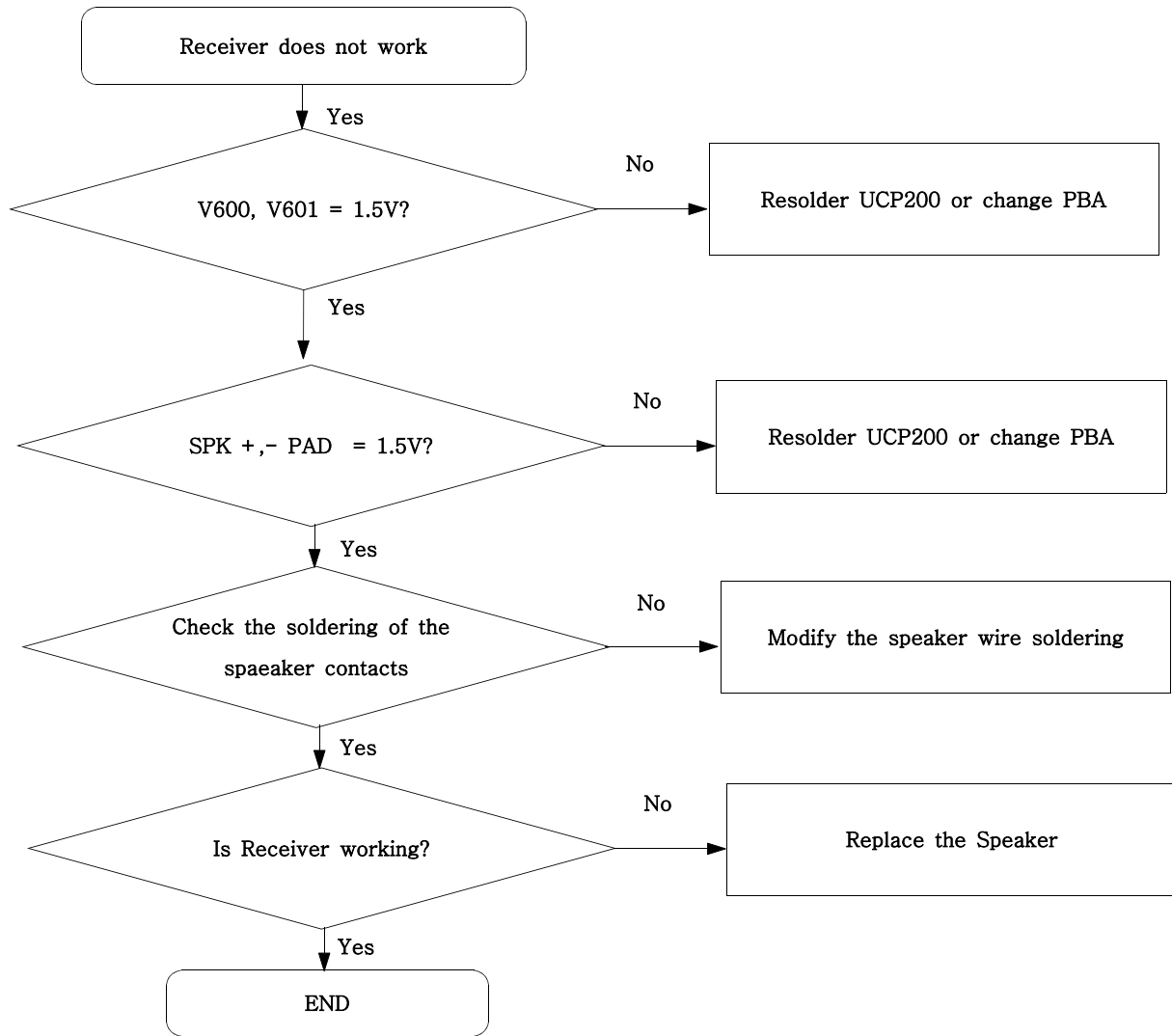


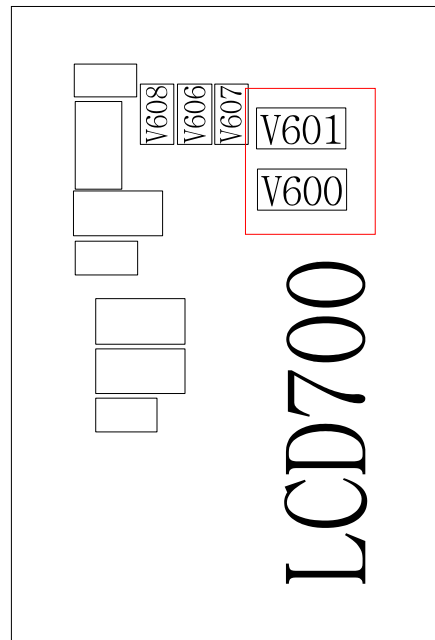
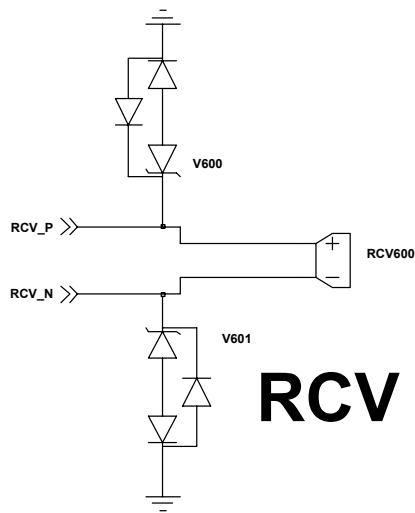
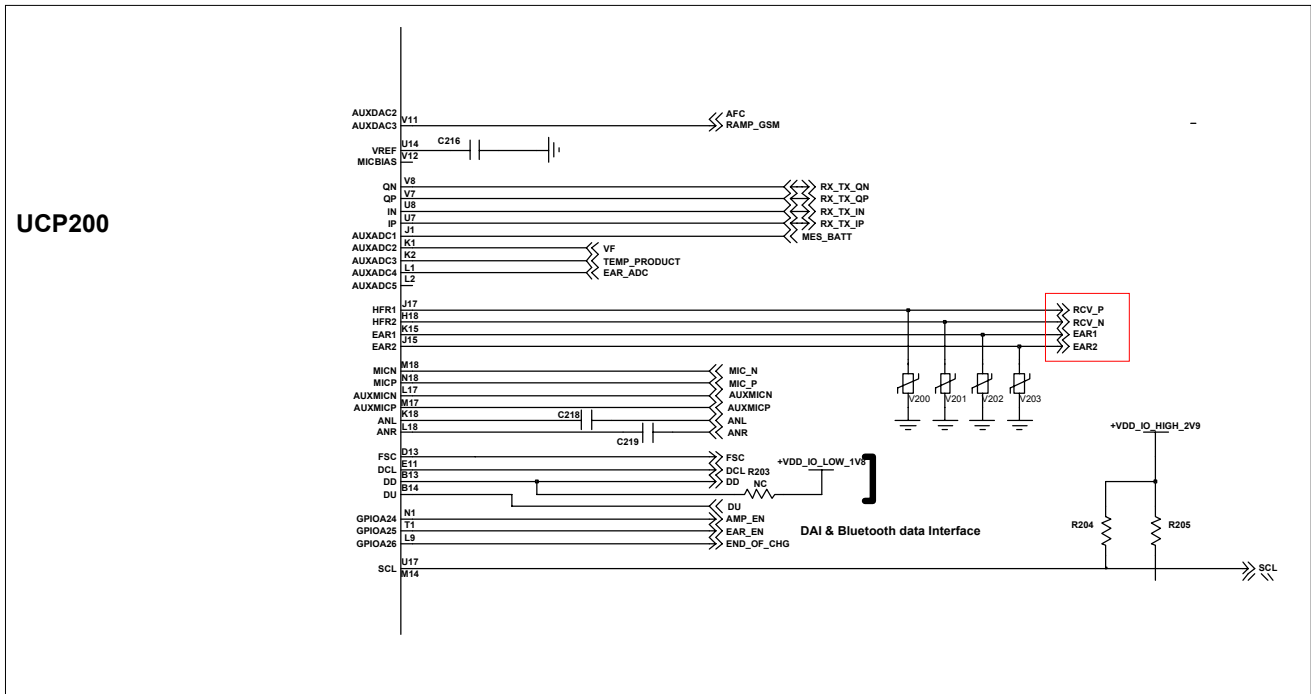
7-7. Key Data Input



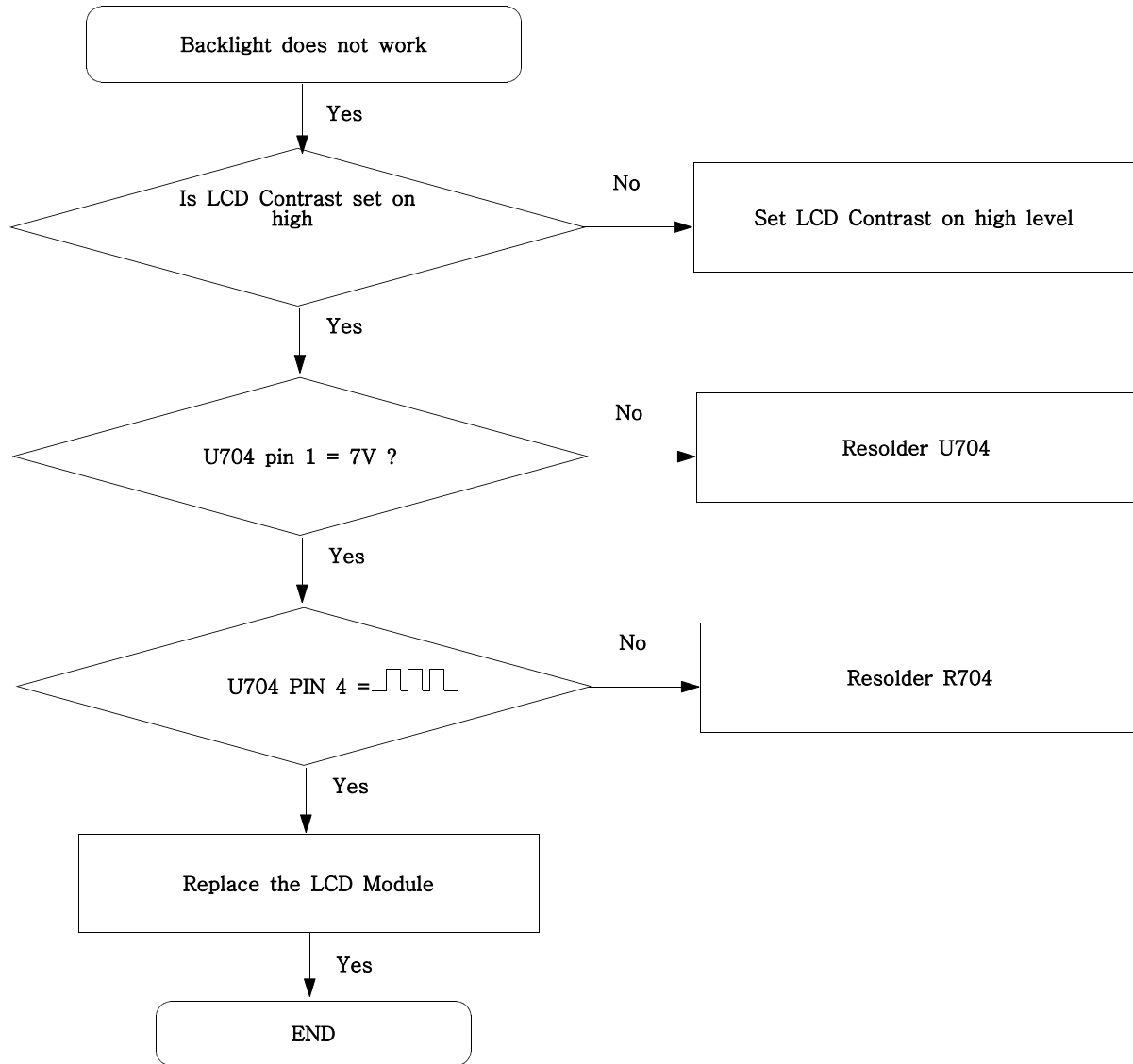


7-8. Receiver Part

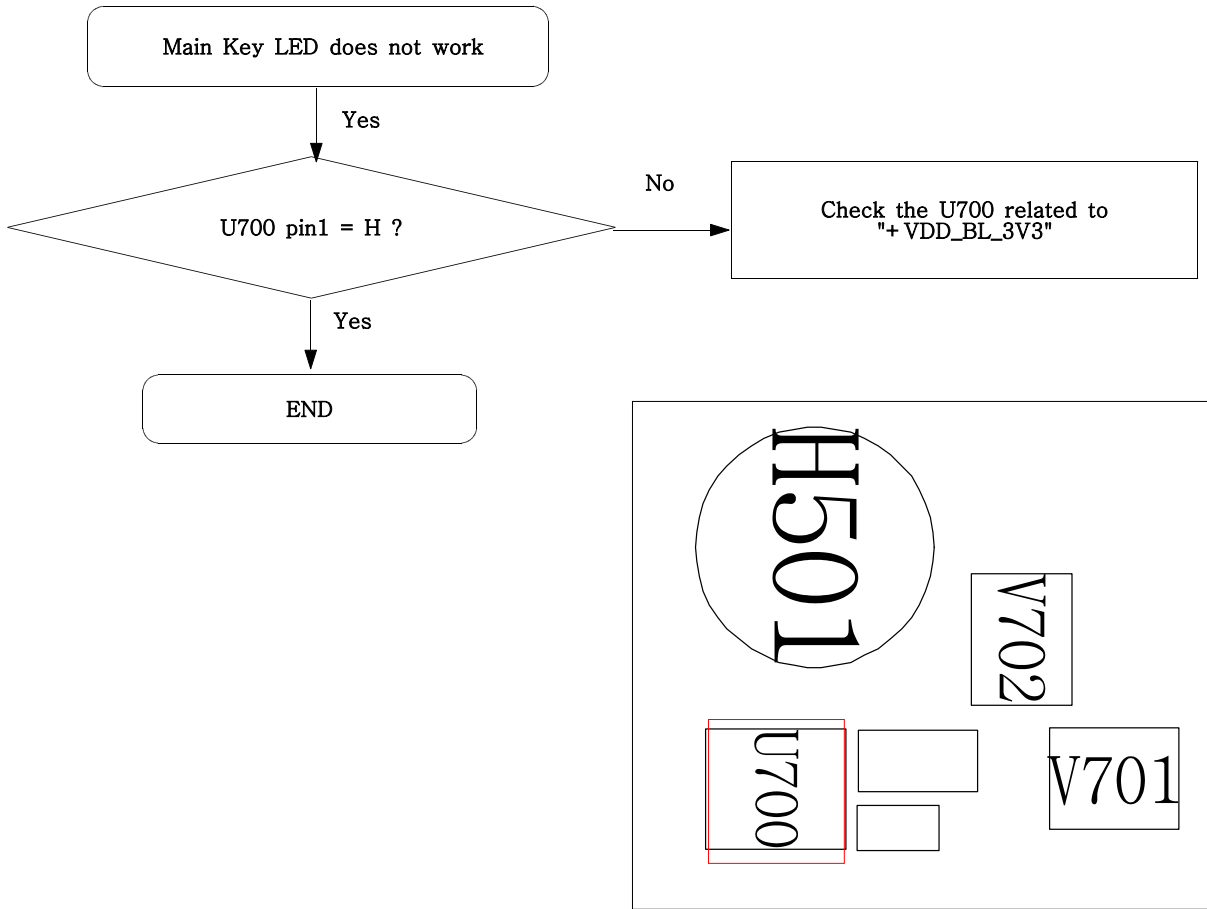




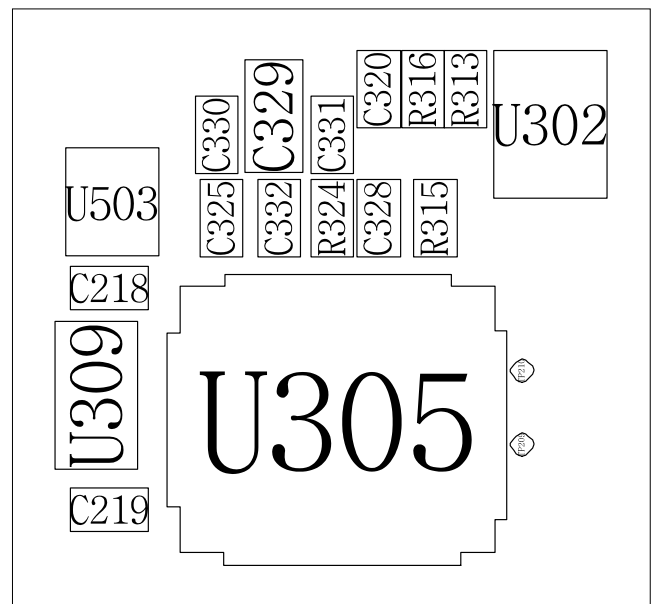
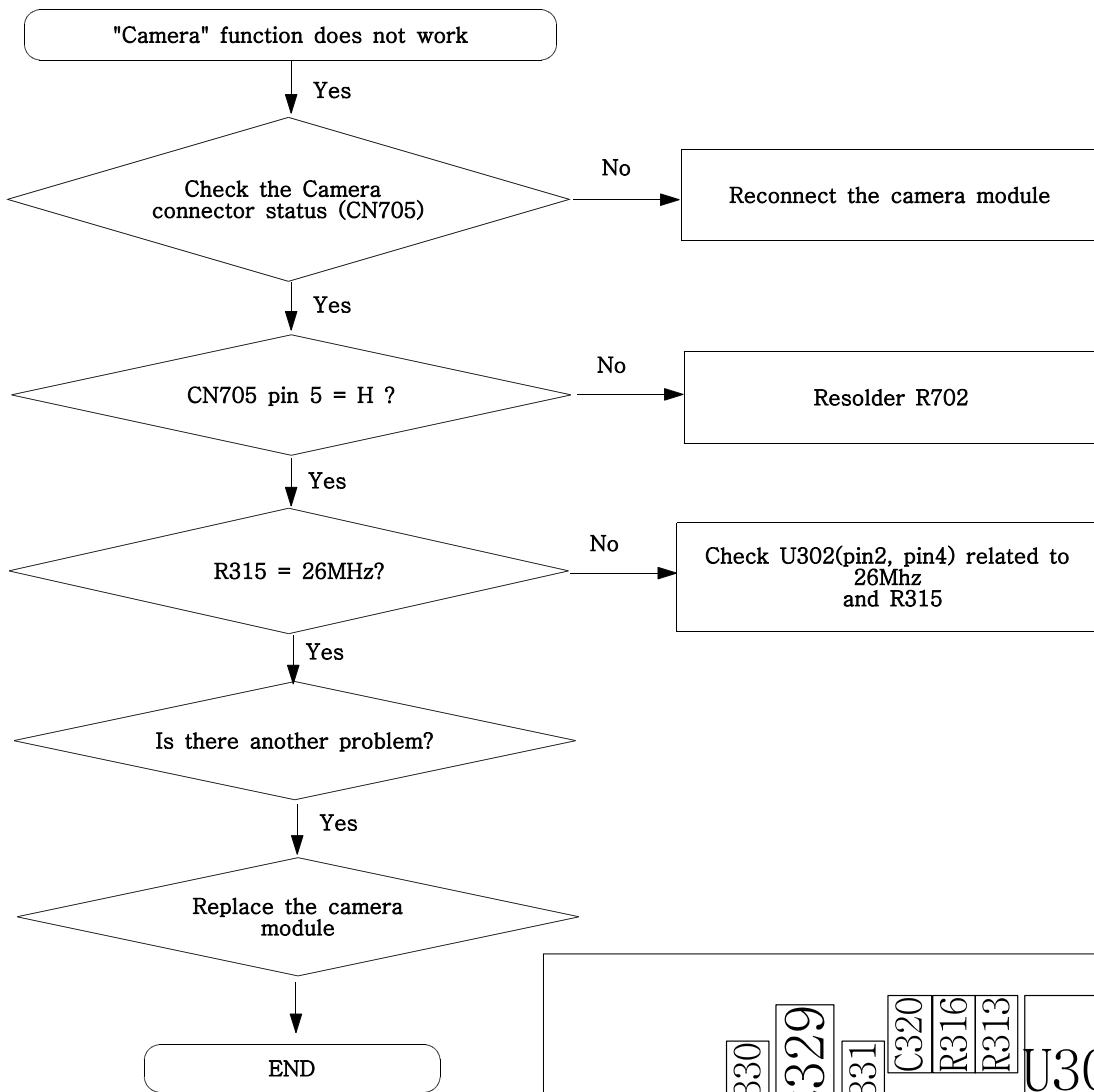
7-9. Back Light (for LCD)

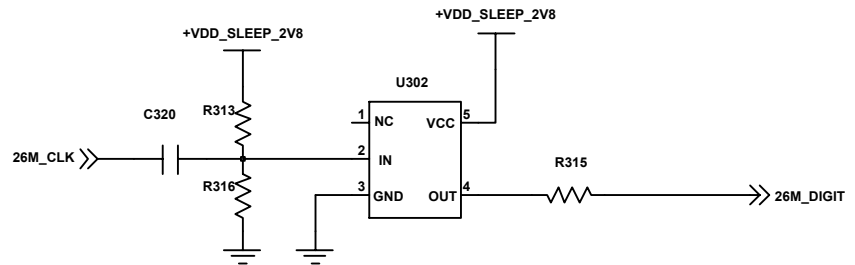
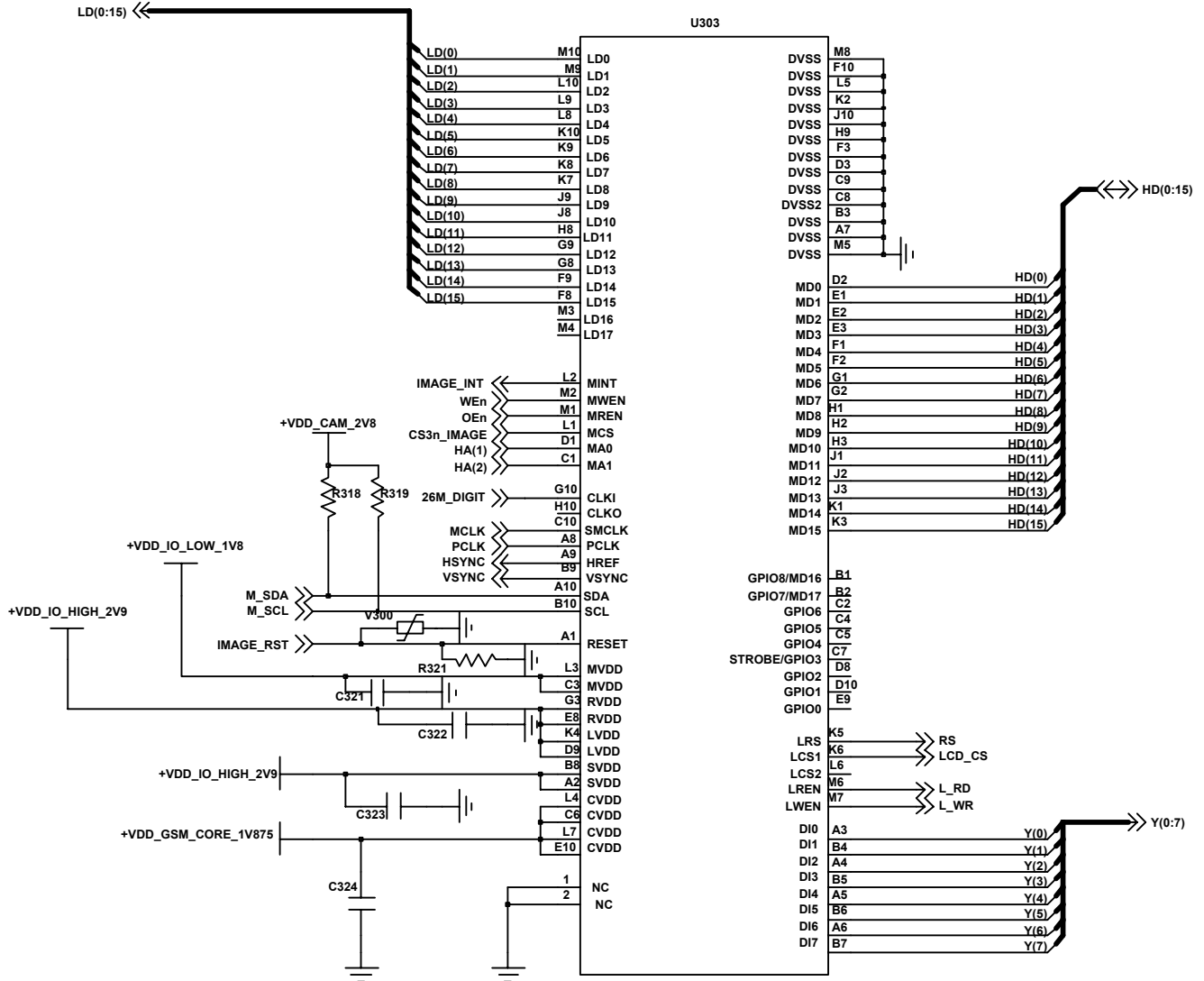


7-10. Key Back Light

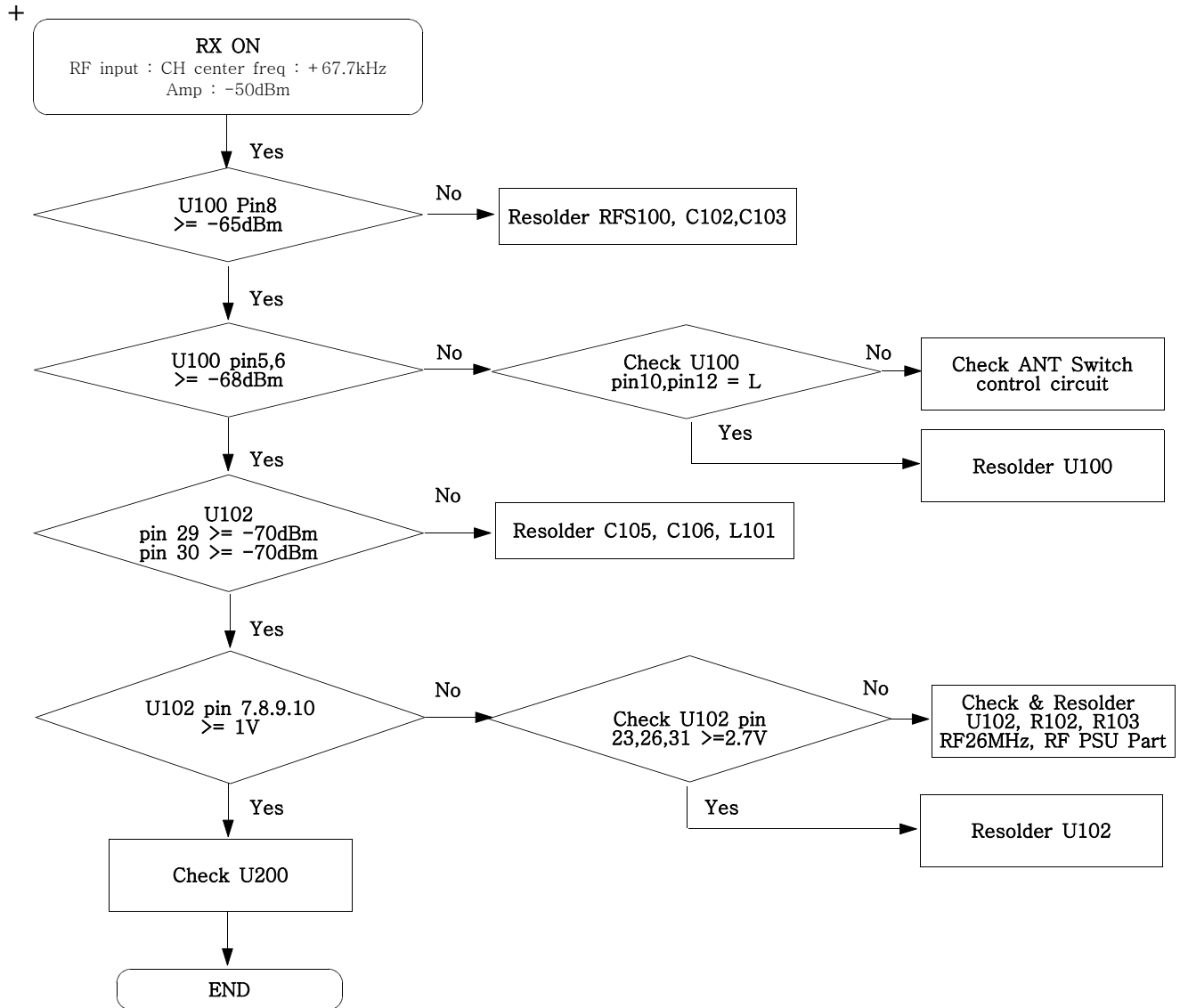


7-11. Camera part

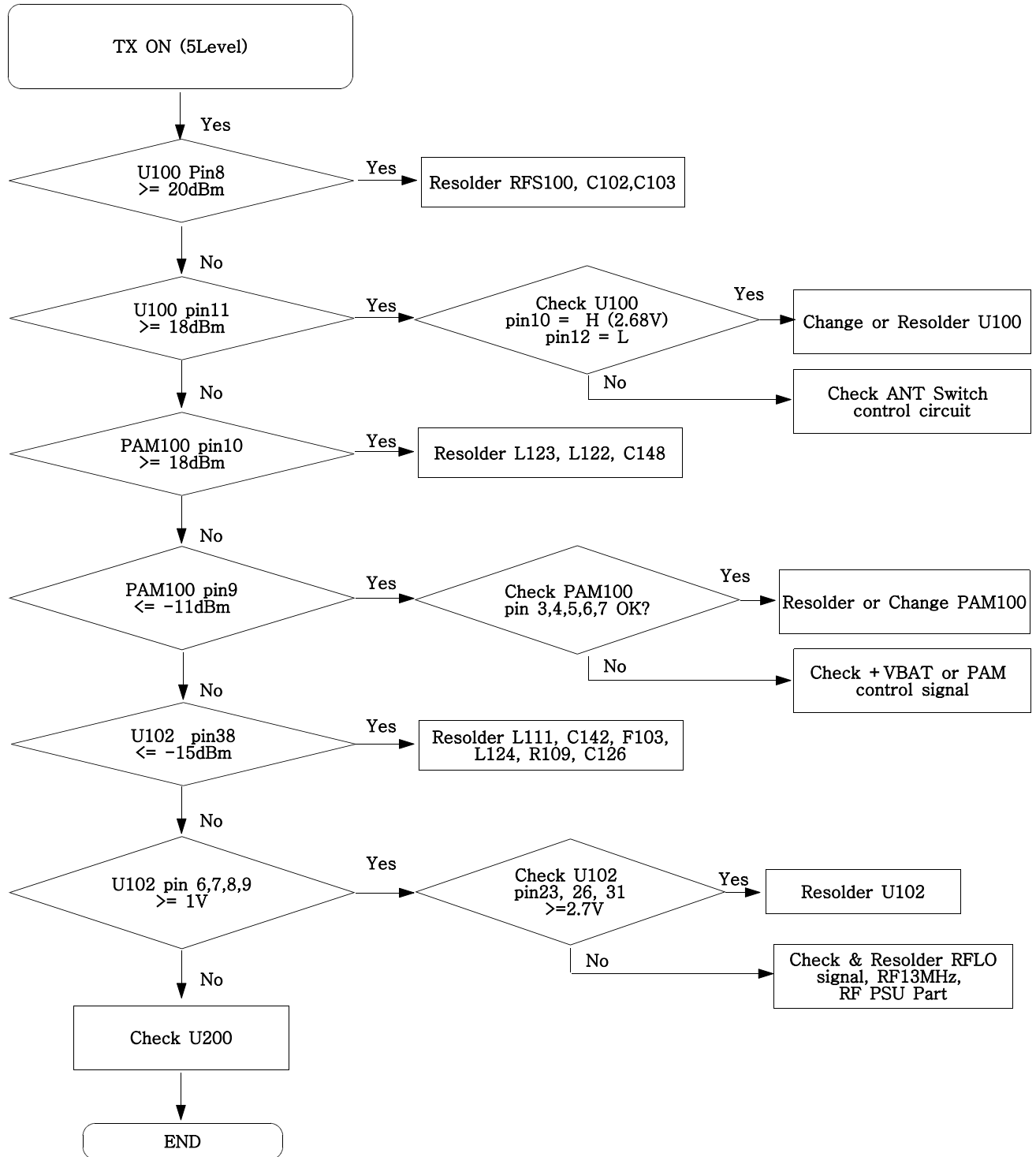




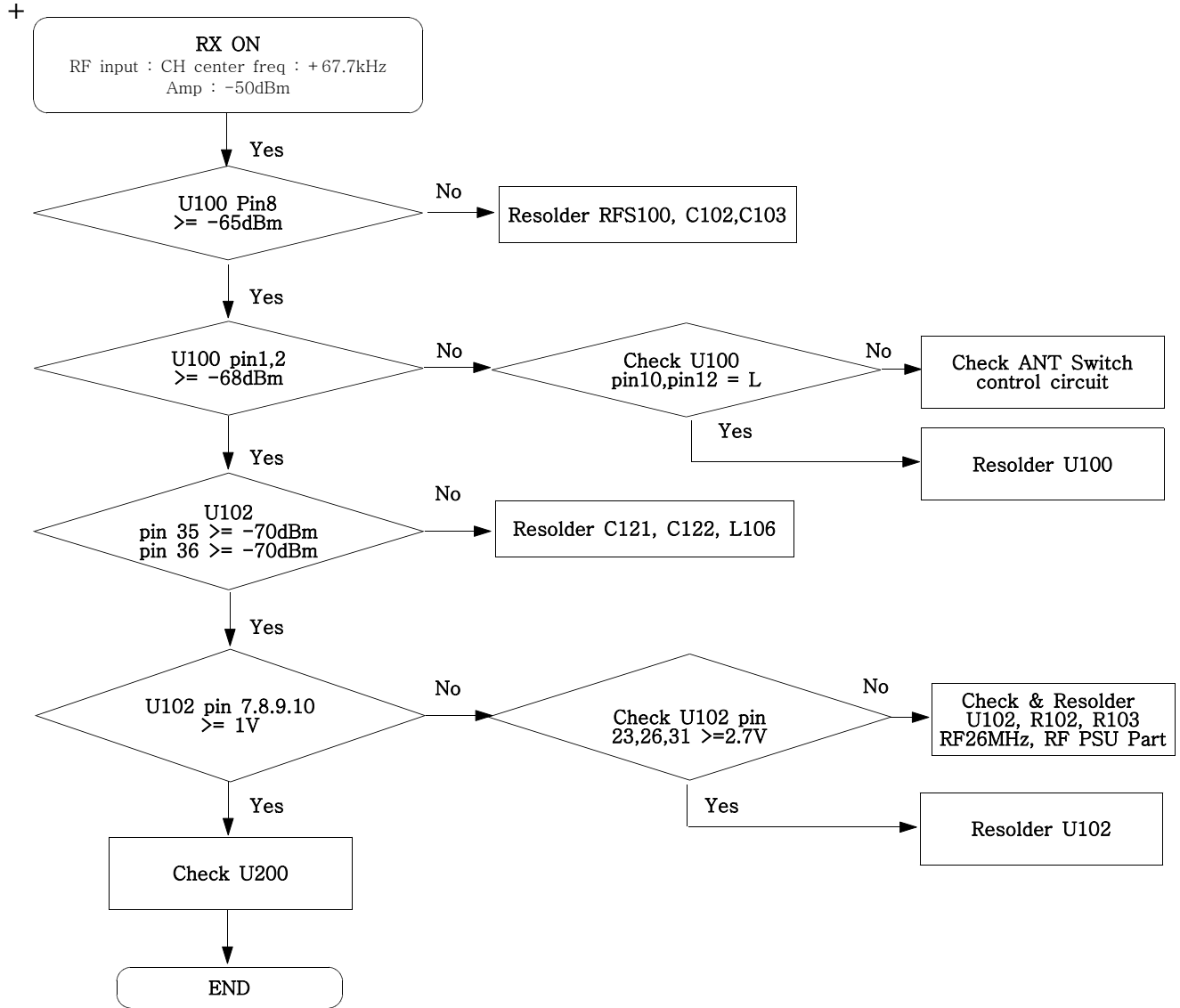
7-12. GSM Receiver



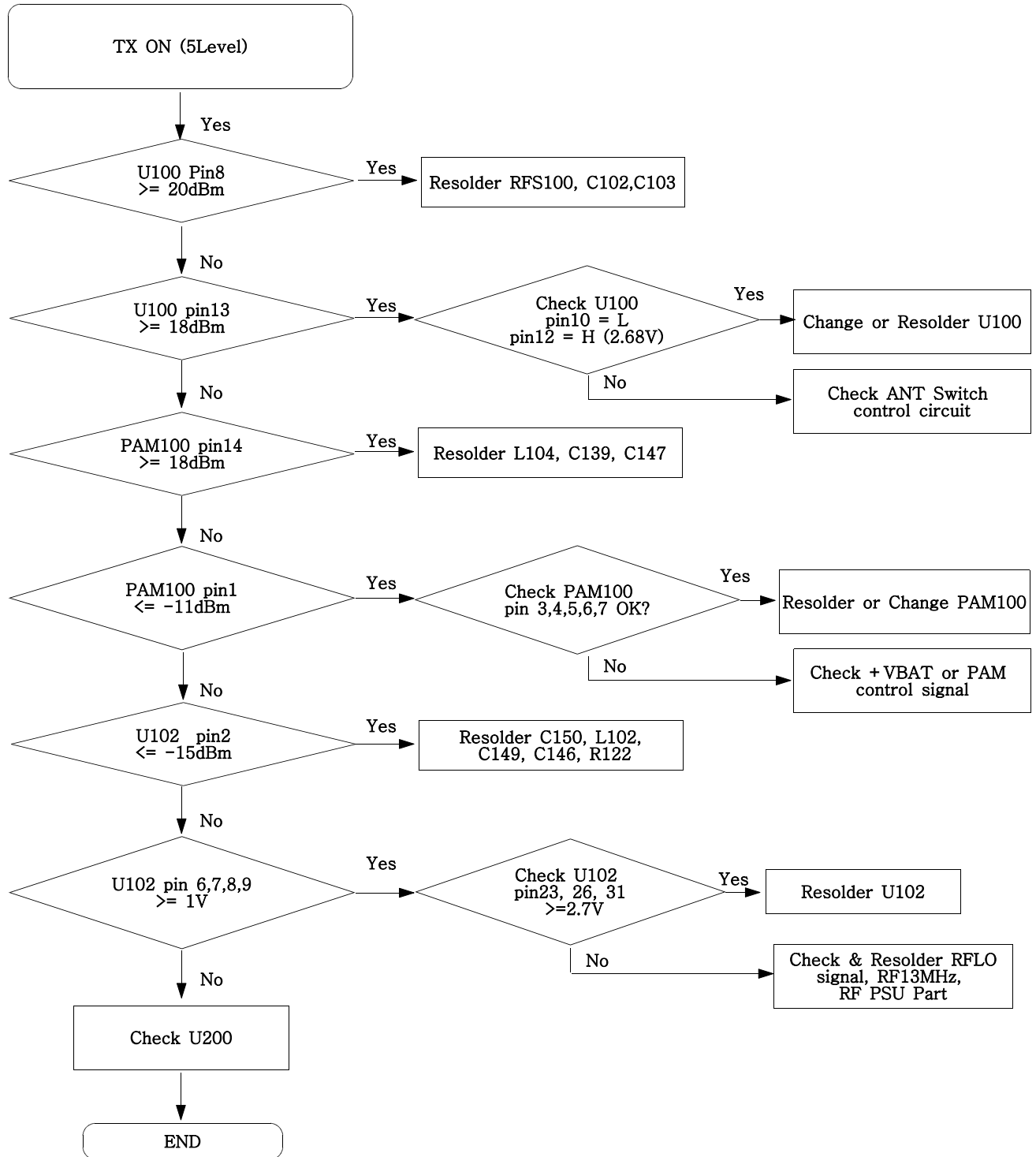
7-13. GSM Transmitter



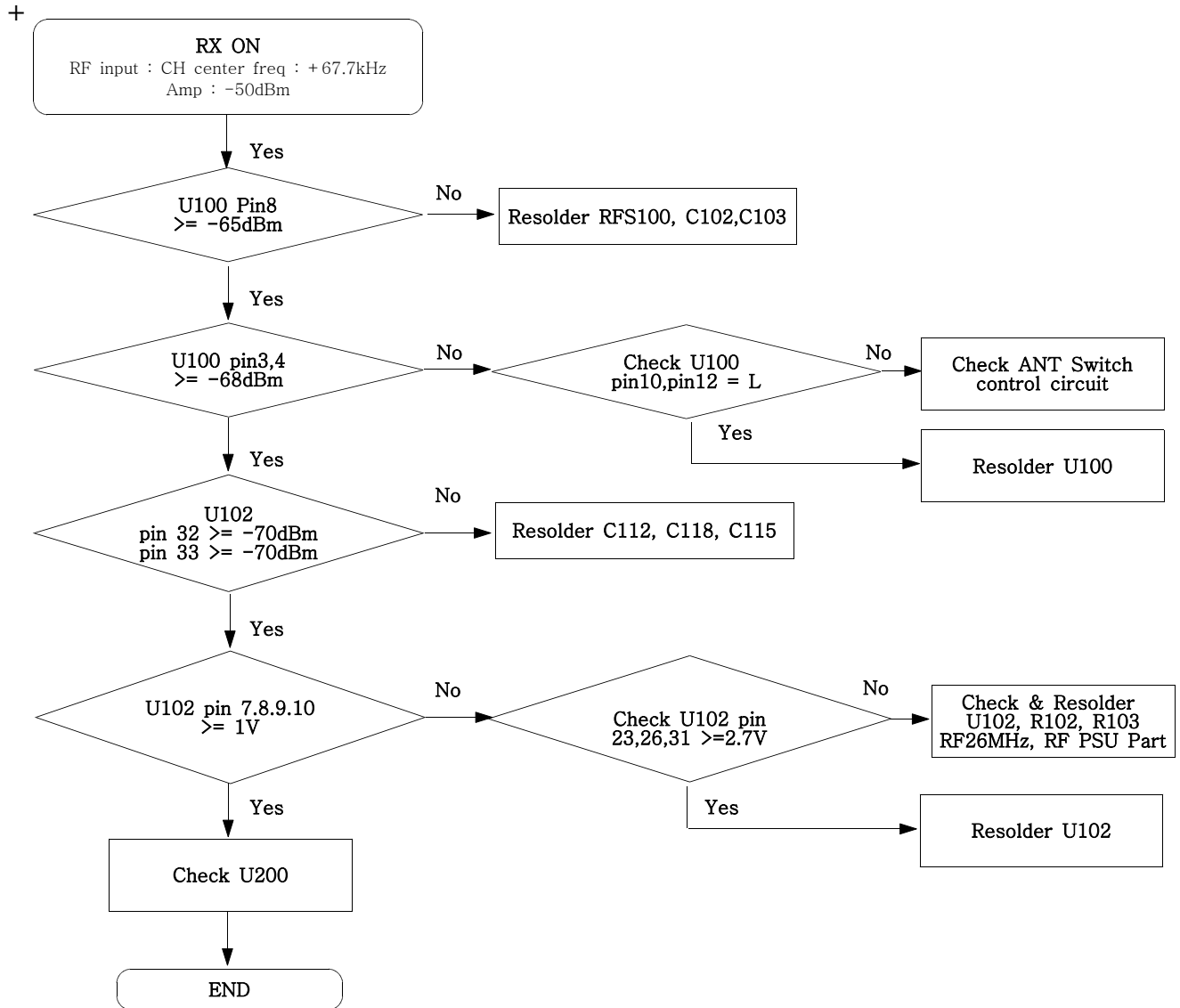
7-14. DCS Receiver



7-15. DCS Transmitter



7-16. PCS Receiver



7-17. PCS Transmitter

