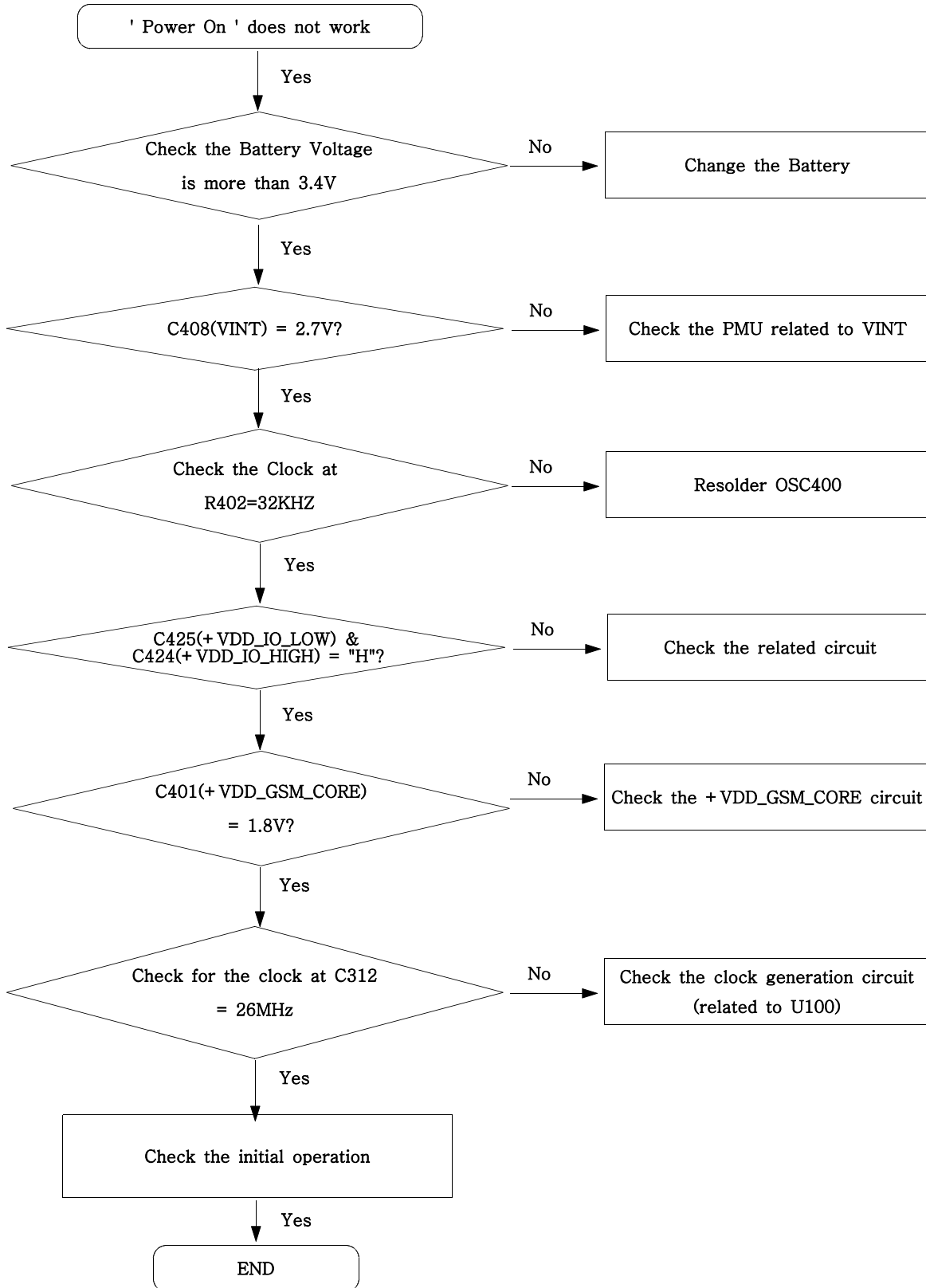
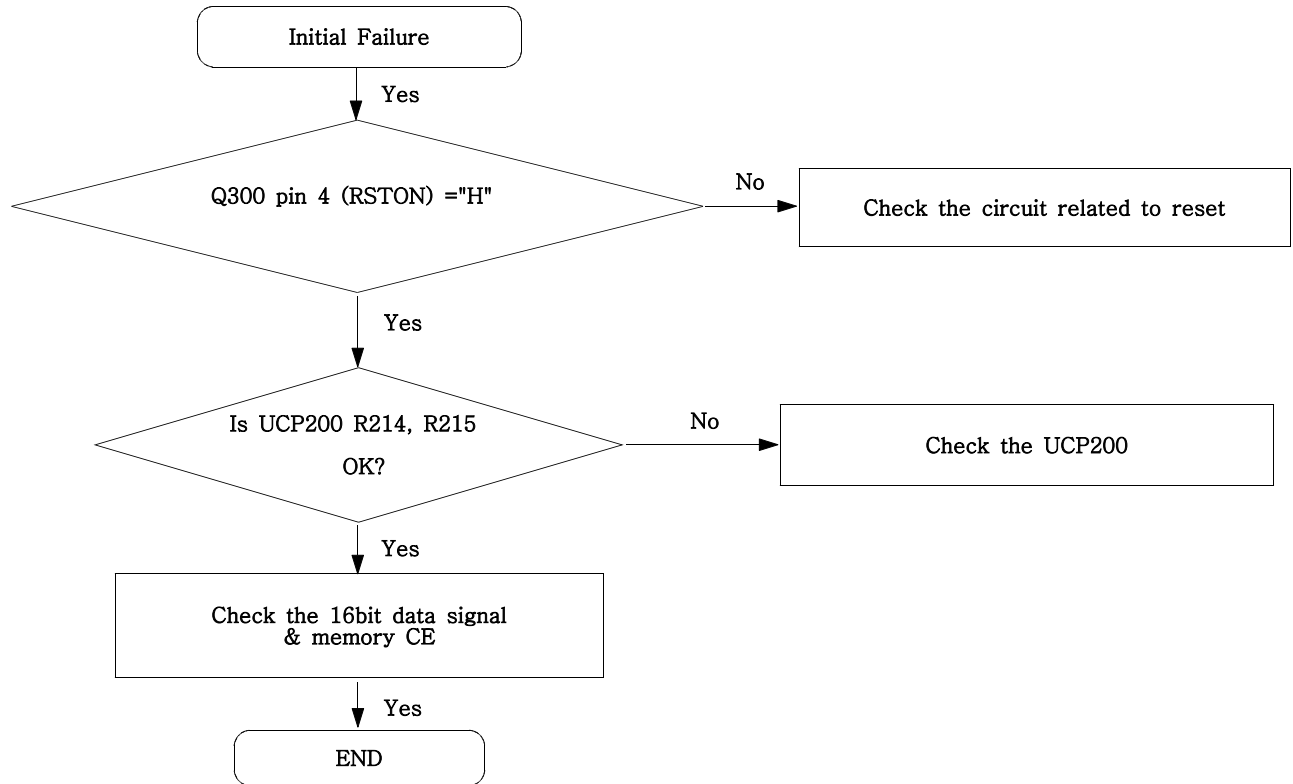


7. Flow Chart of Troubleshooting

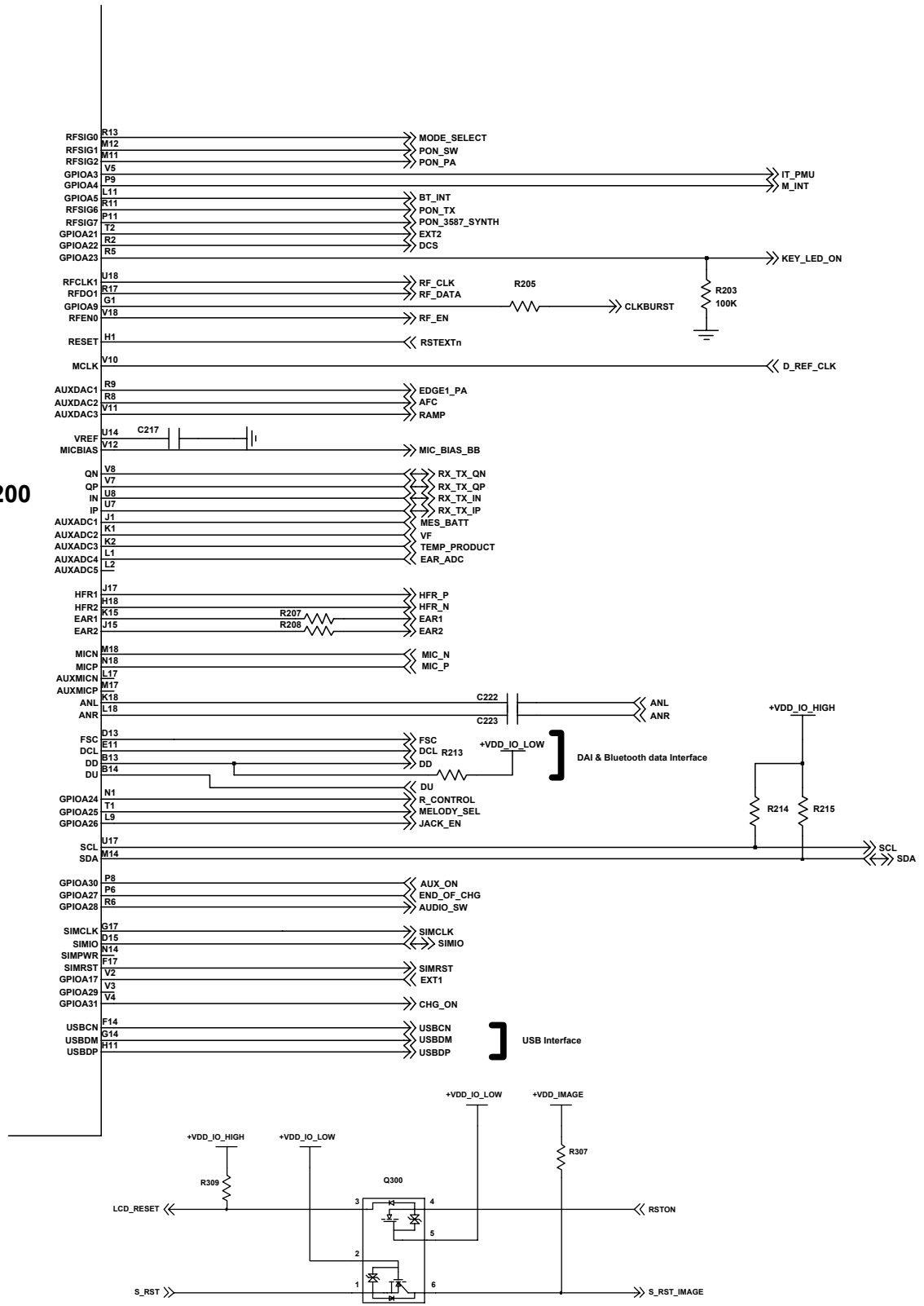
7-1. Power On



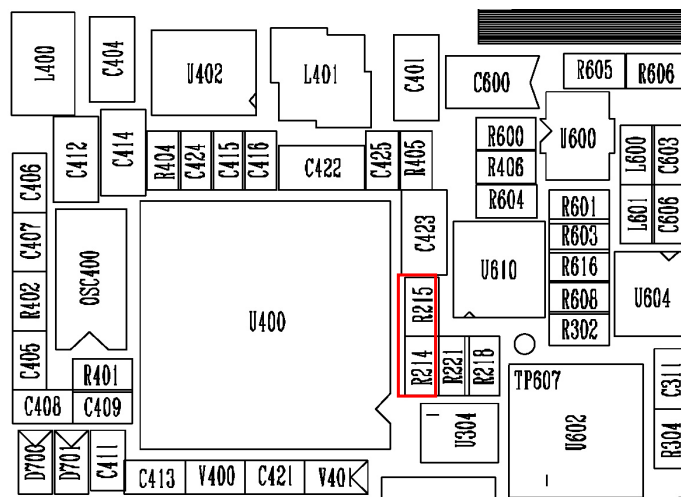
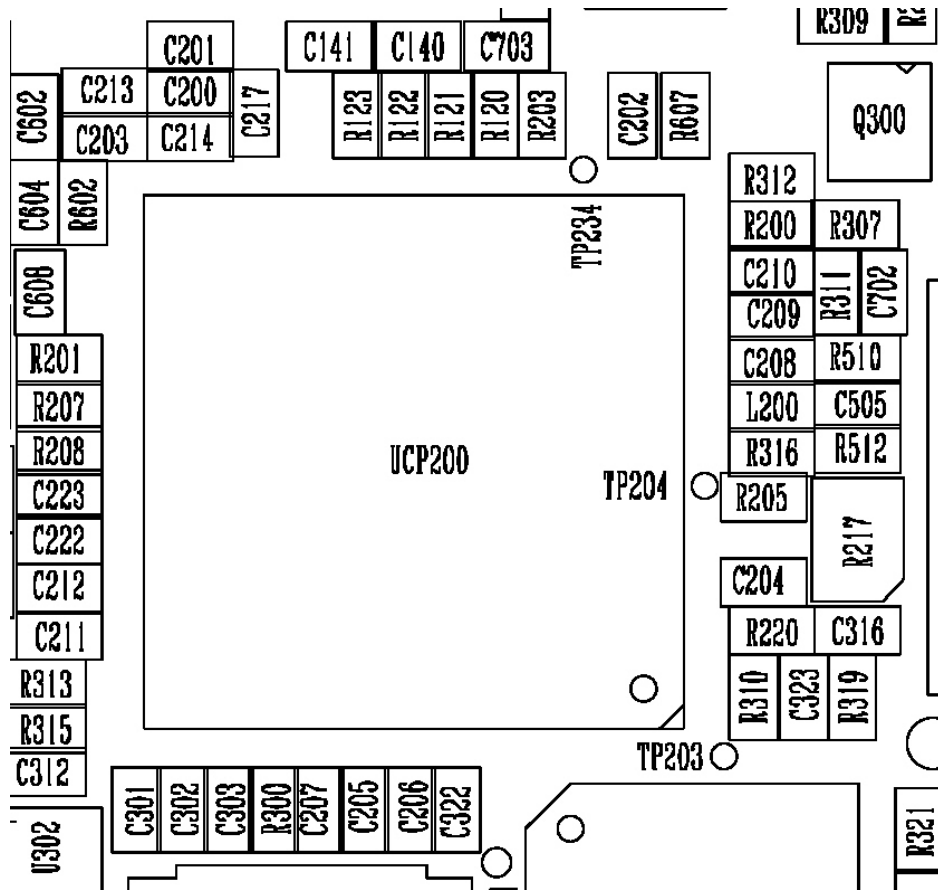
7-2. Initial



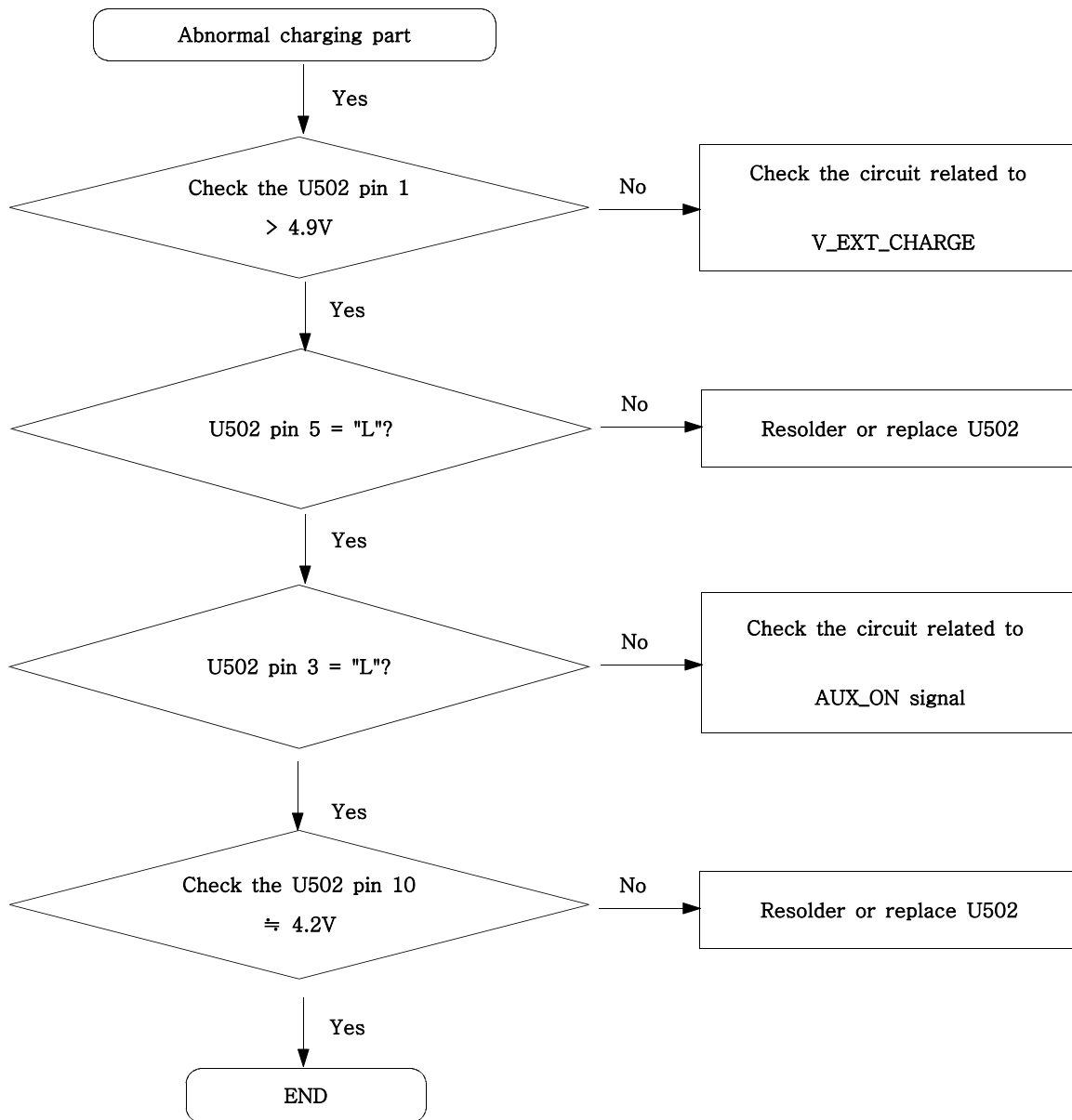
UCP200

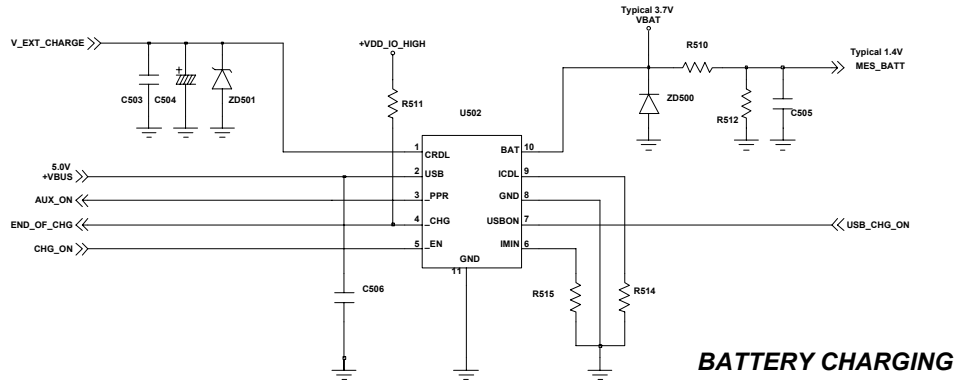


LEVEL SHIFT

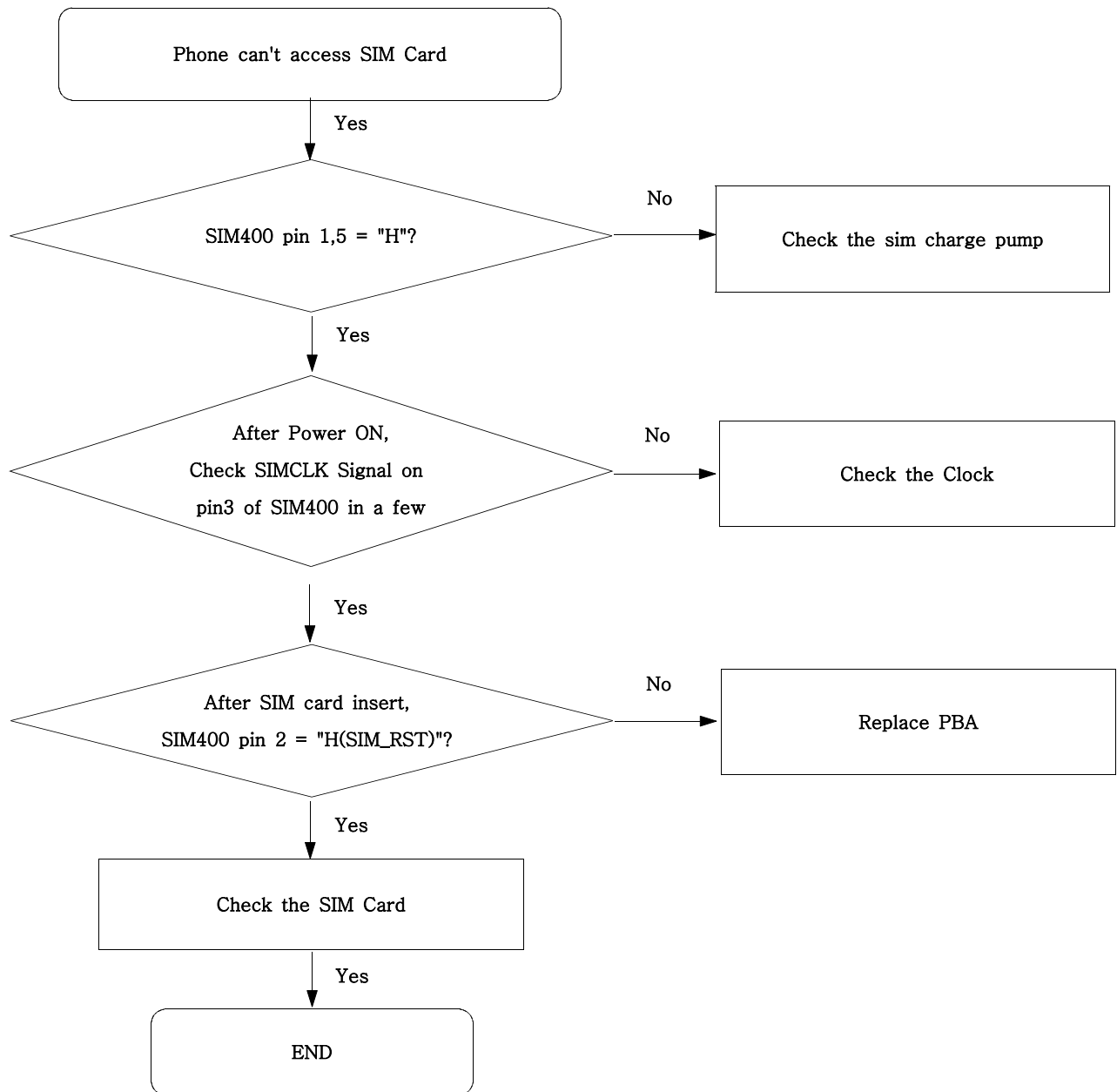


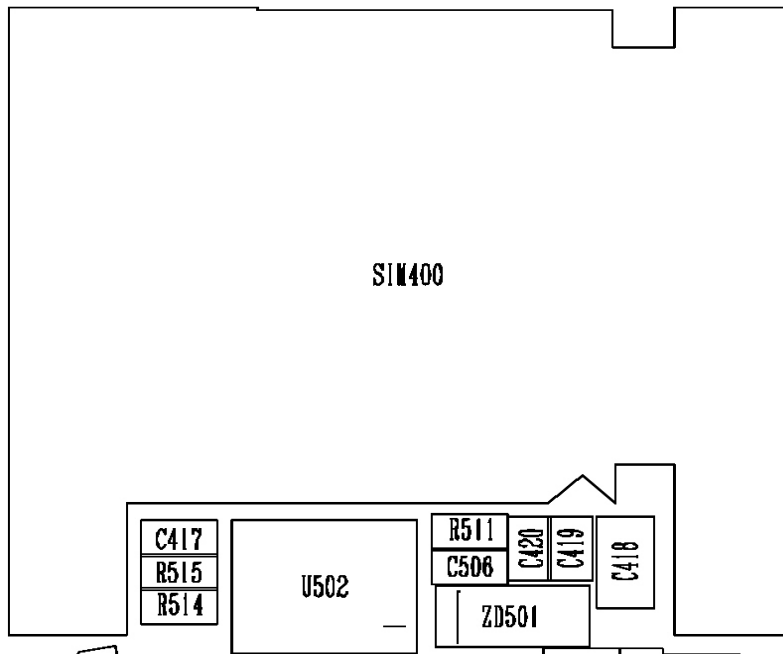
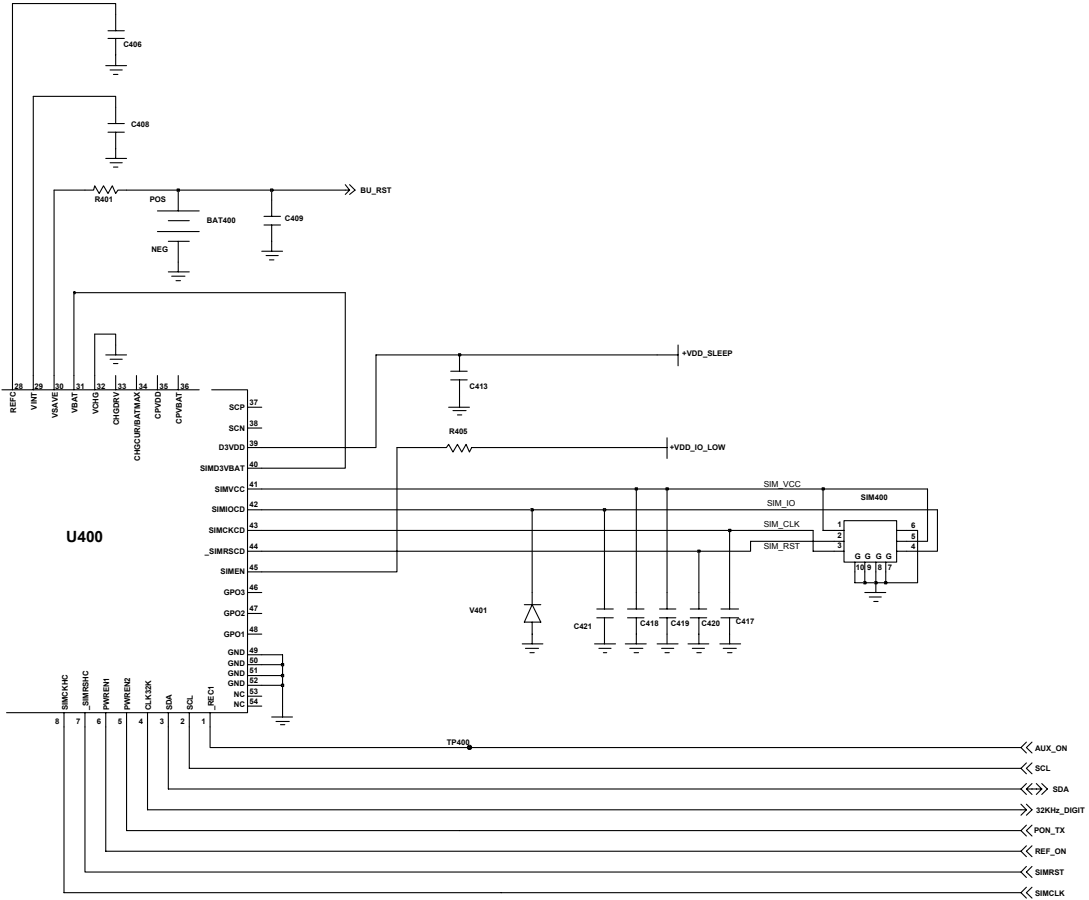
7-3. Charging Part



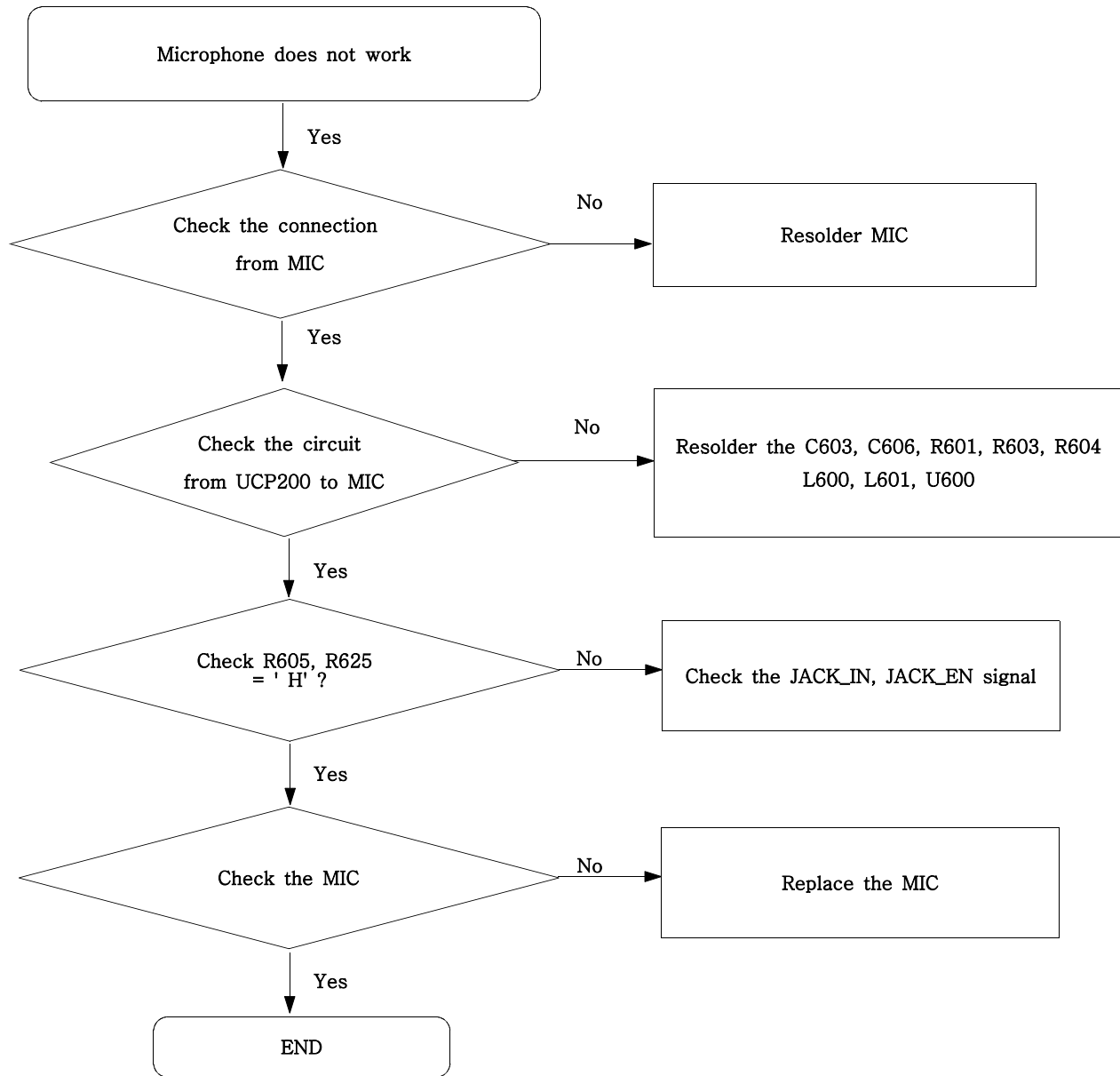


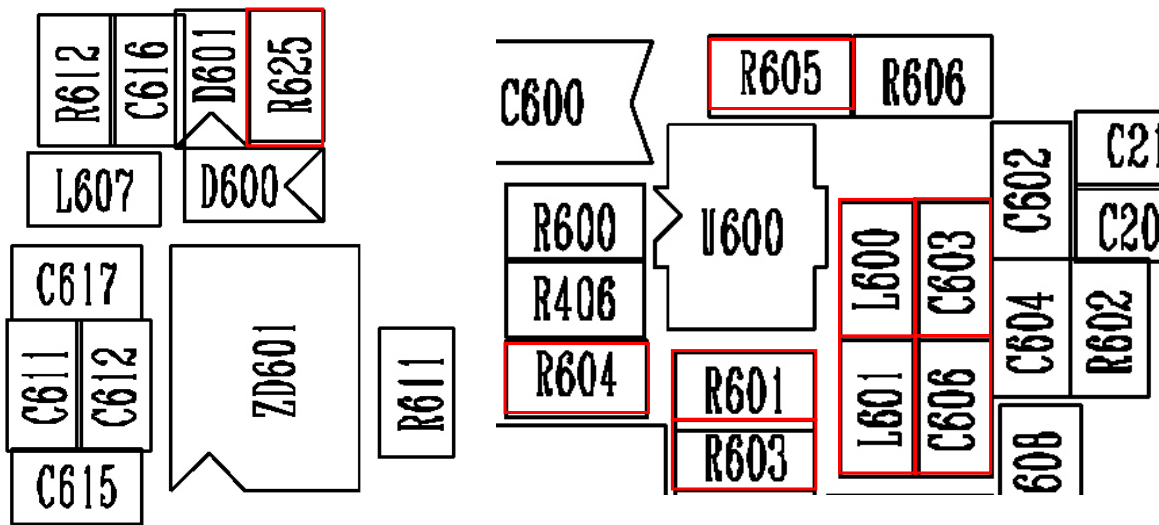
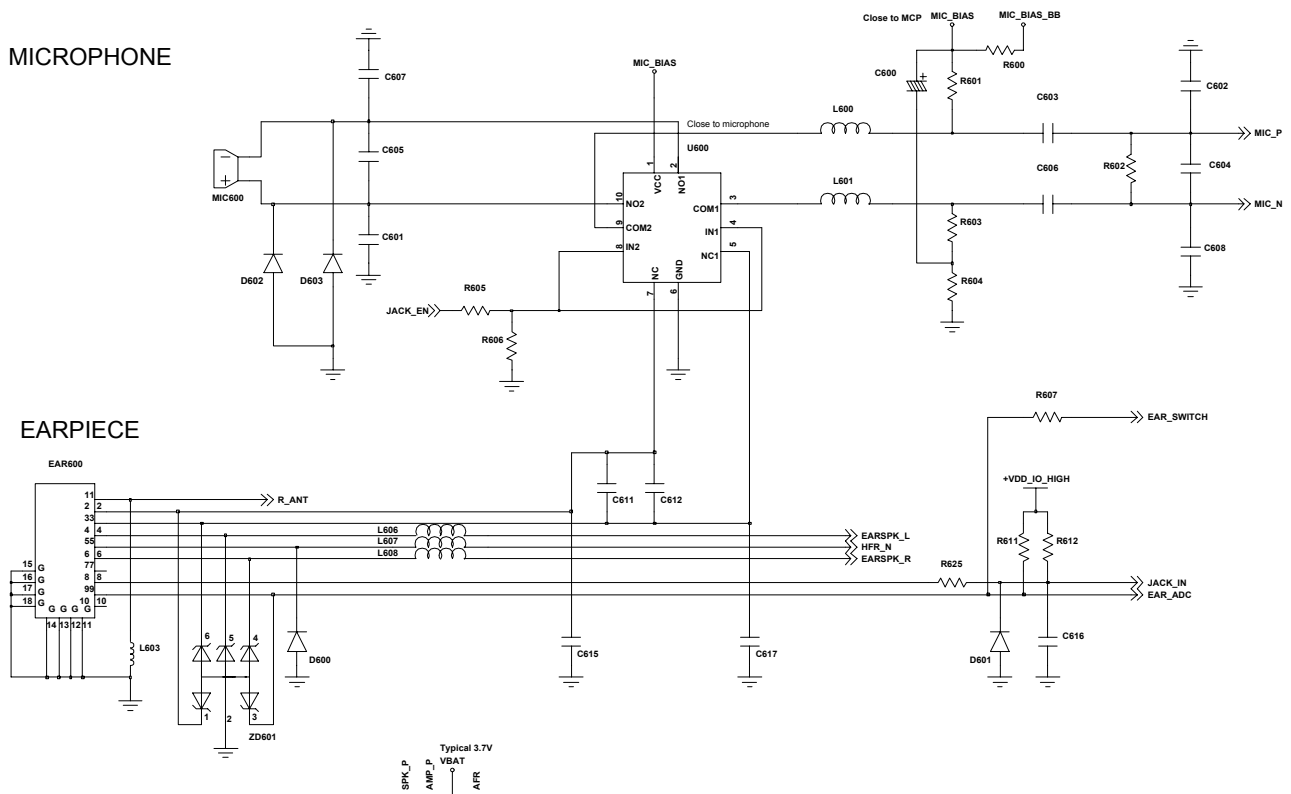
7-4. Sim Part



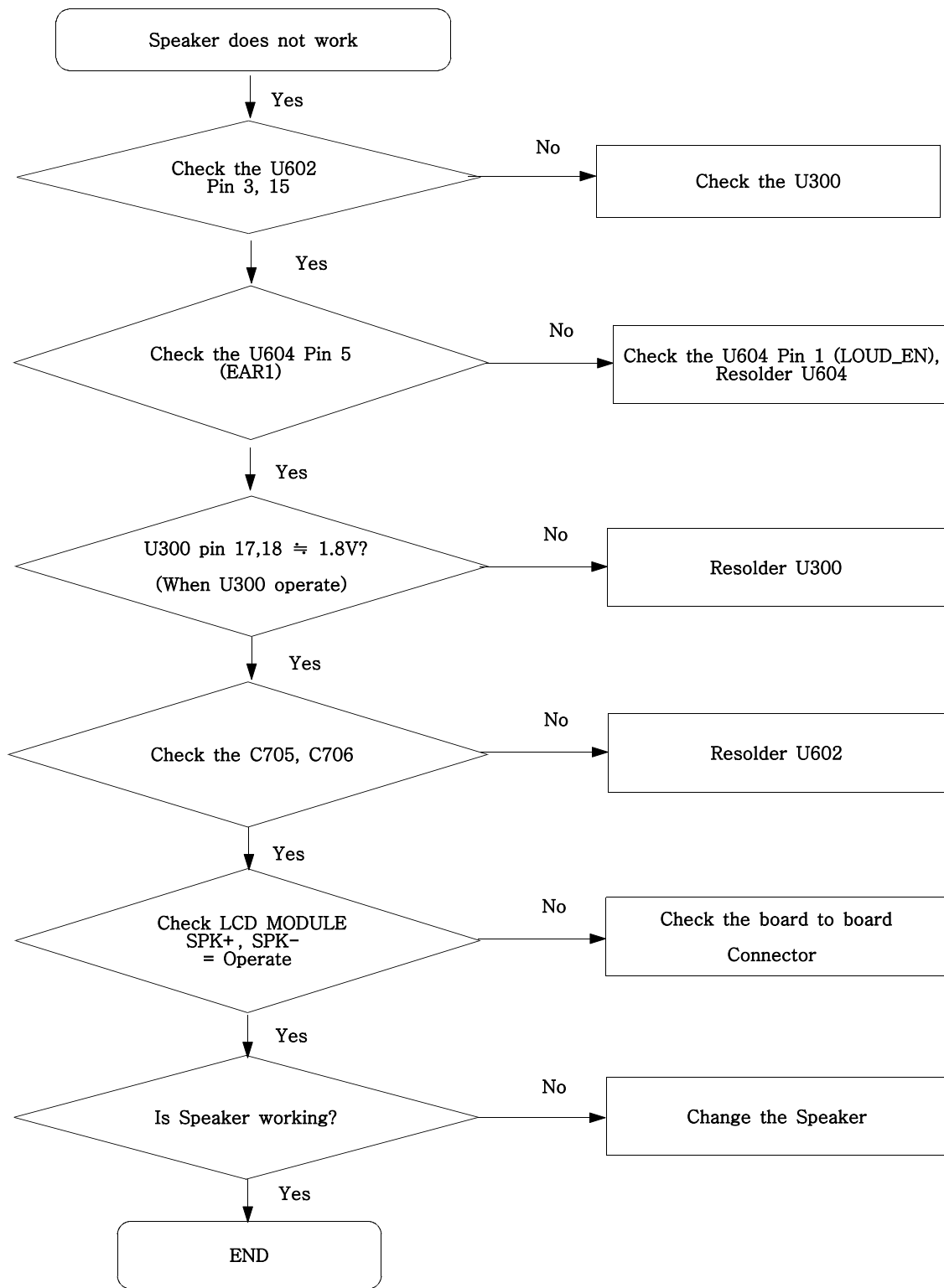


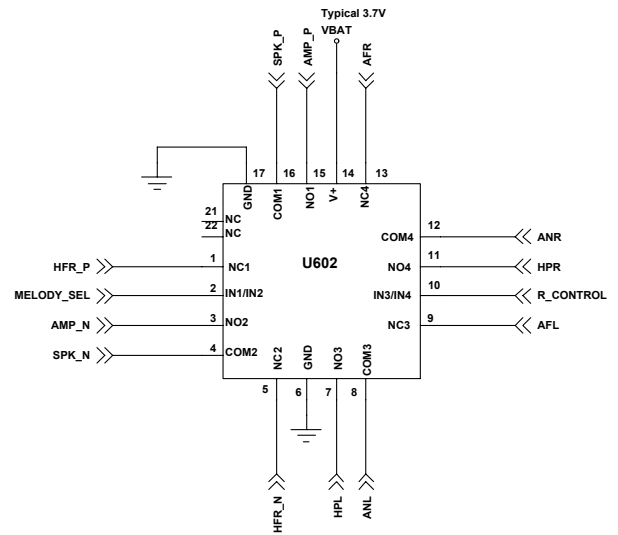
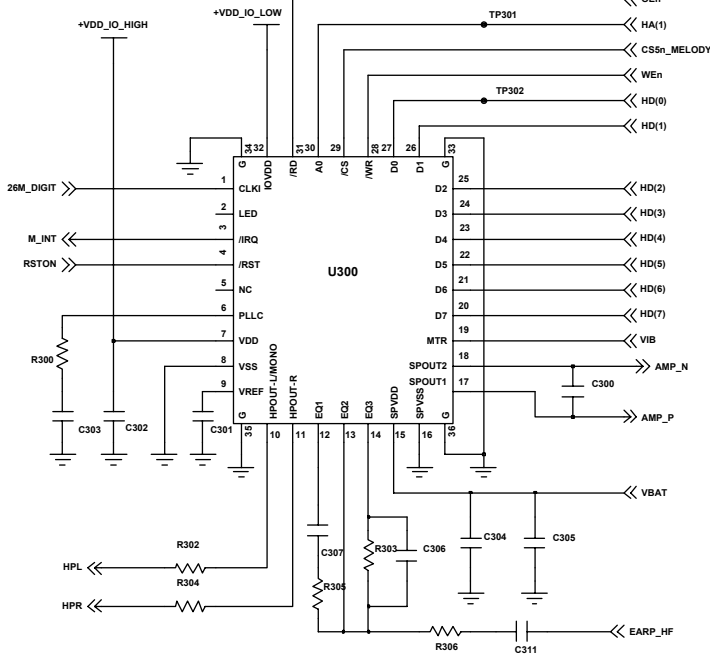
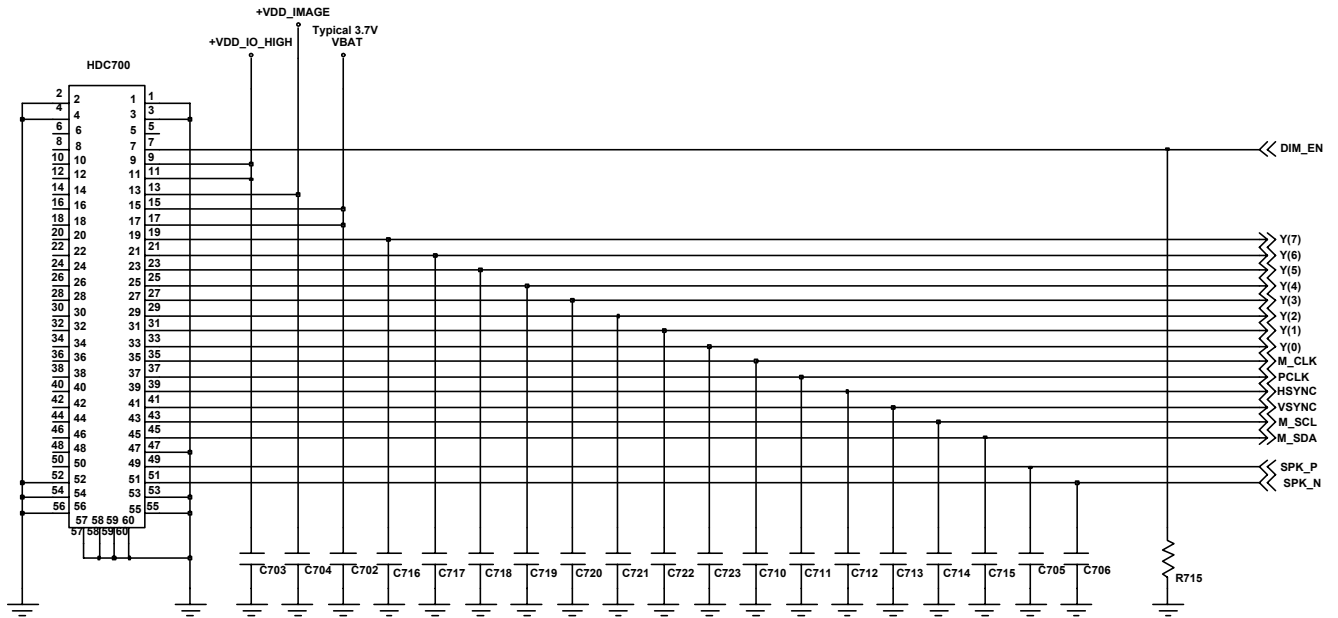
7-5. Microphone Part



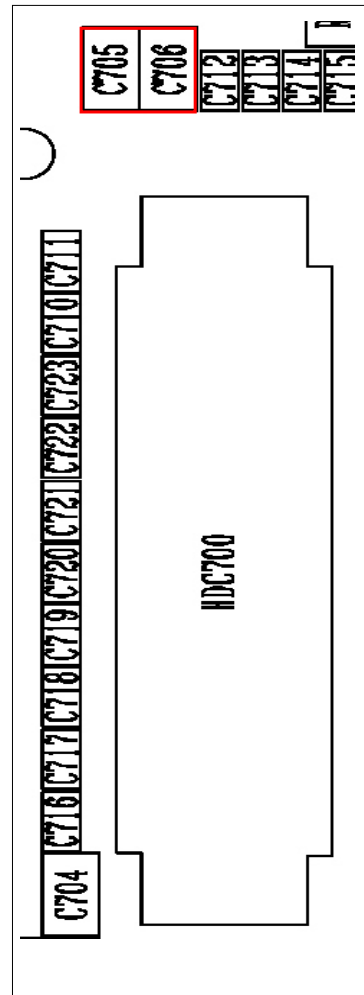
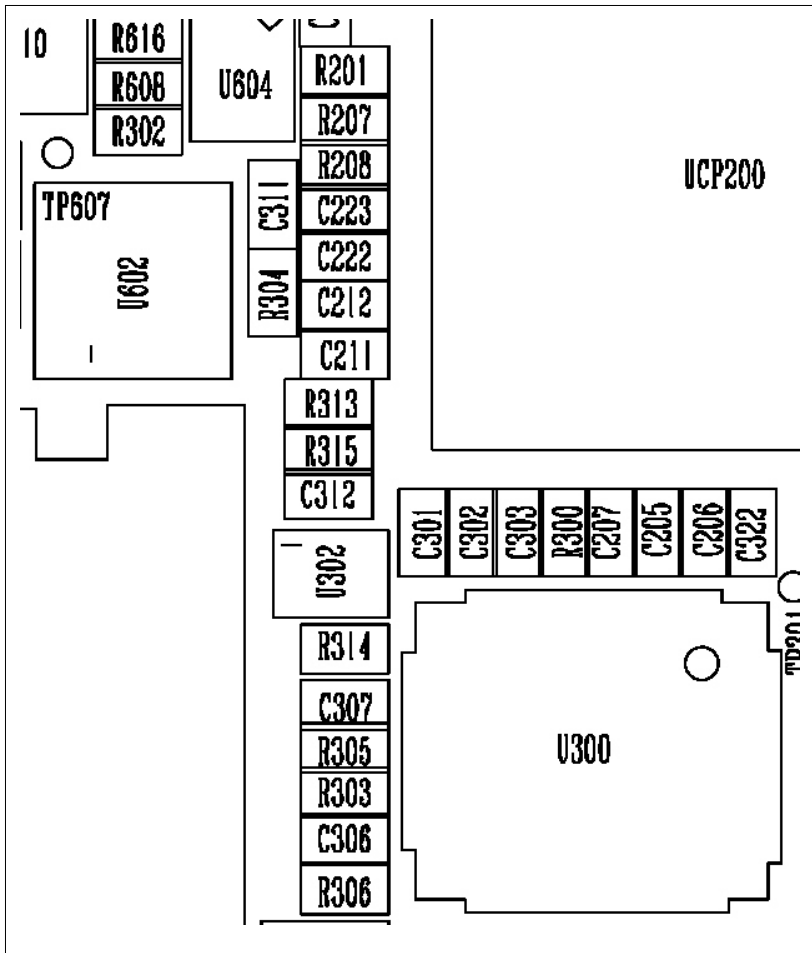


7-6. Speaker Part(Melody)

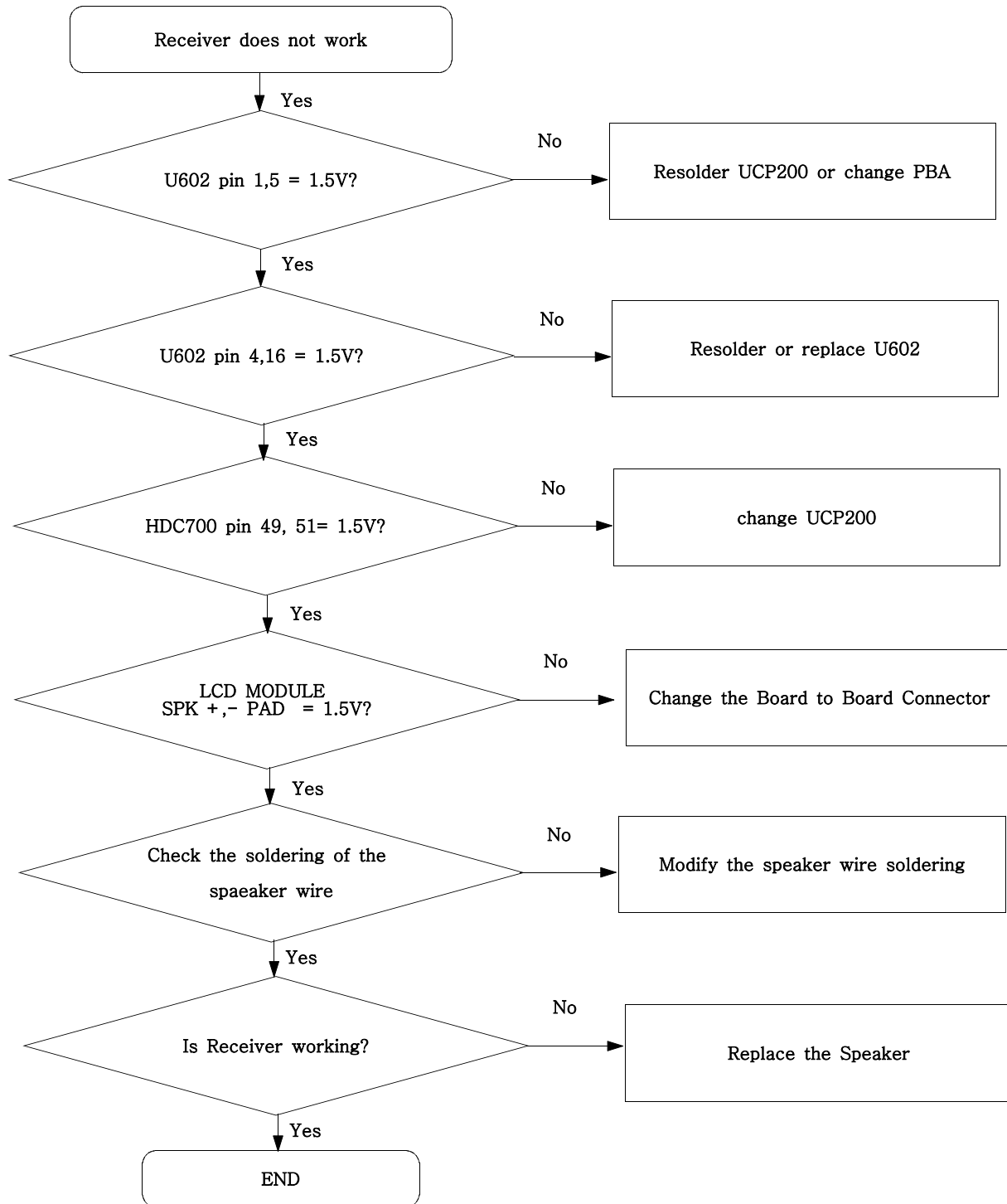




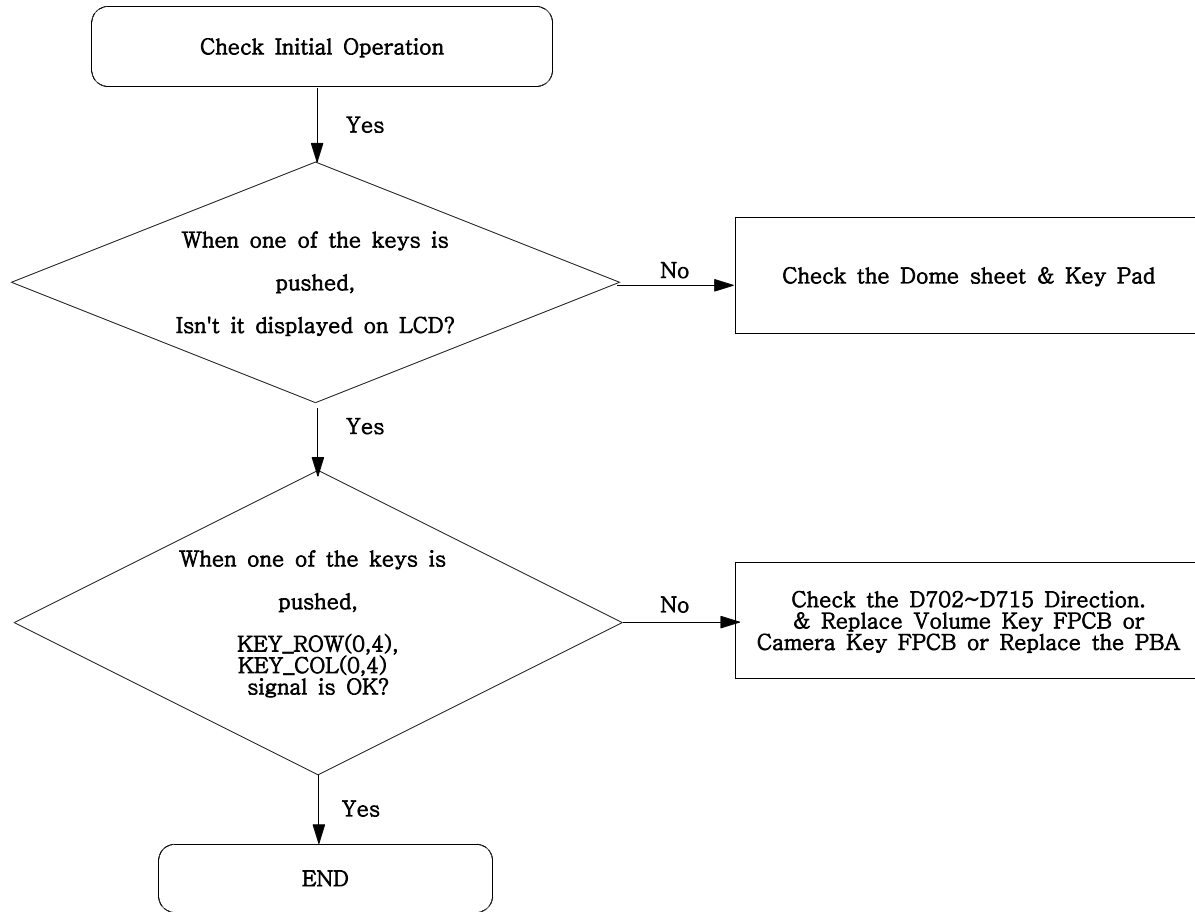
MELODY IC

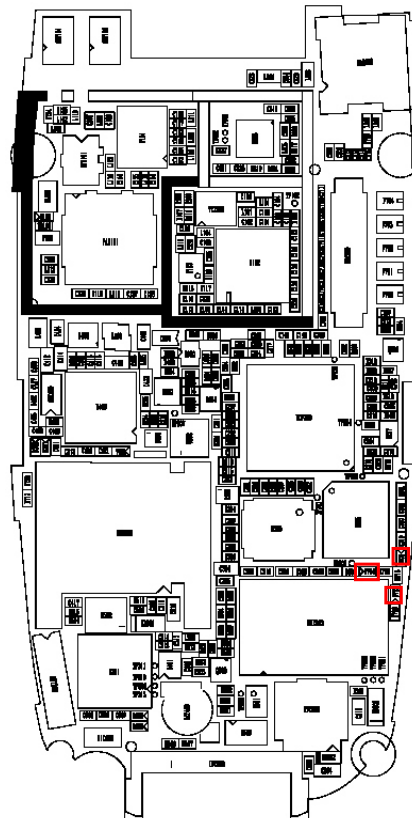
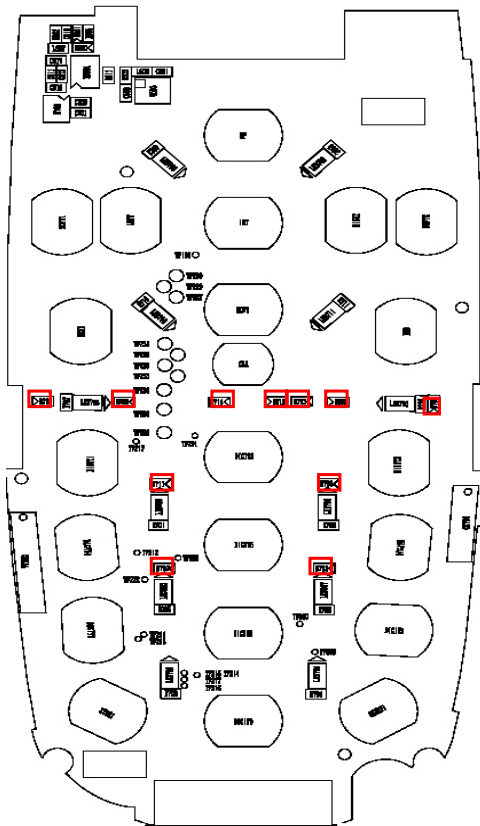
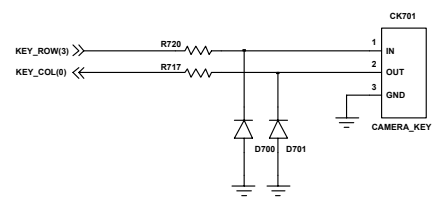
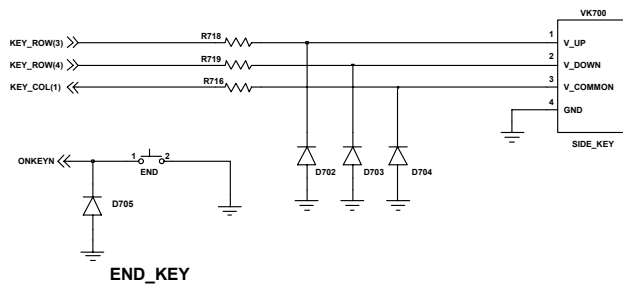
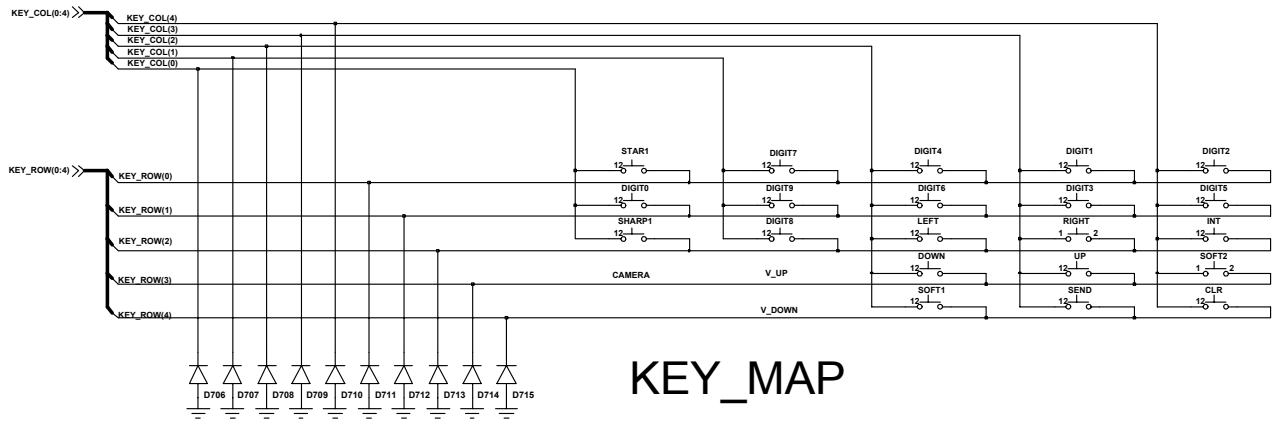


7-7. Receiver Part

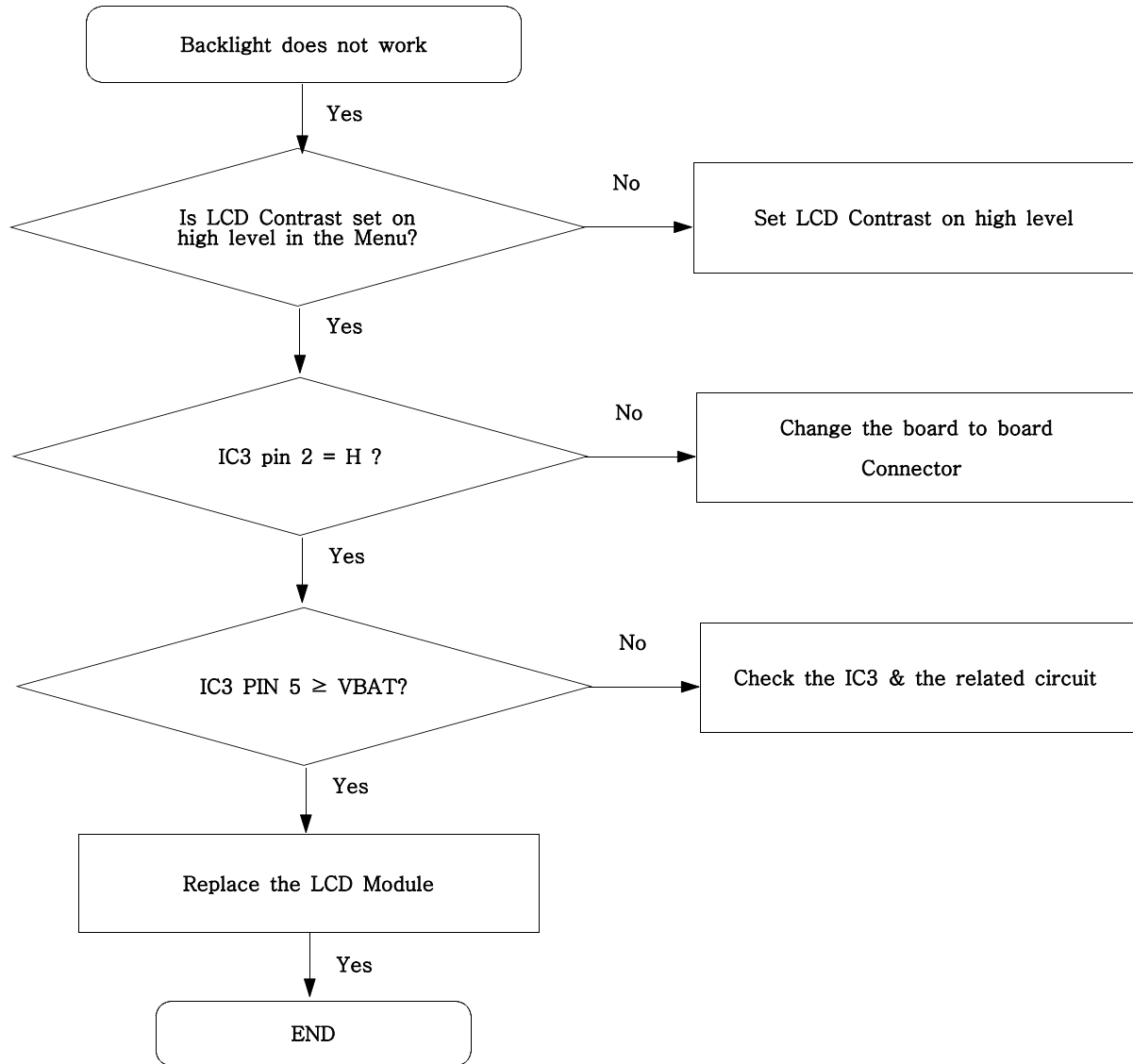


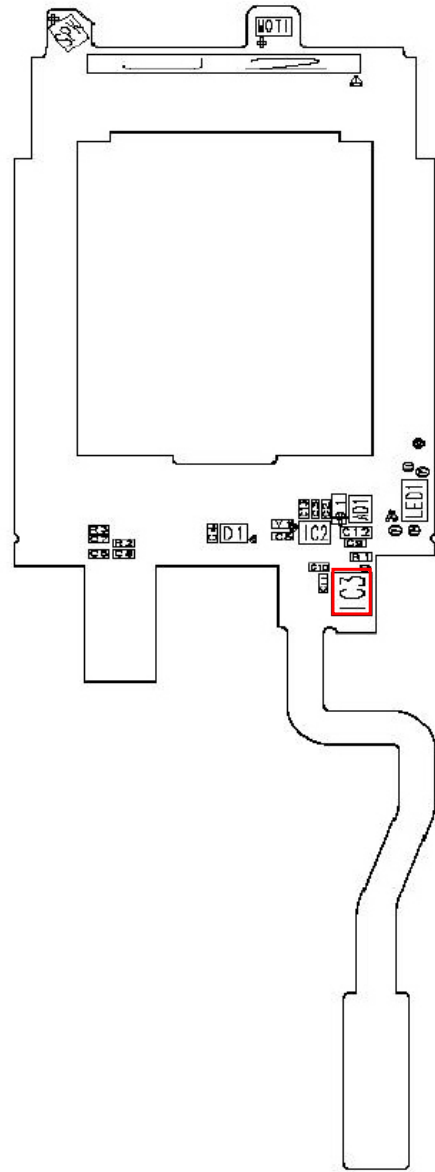
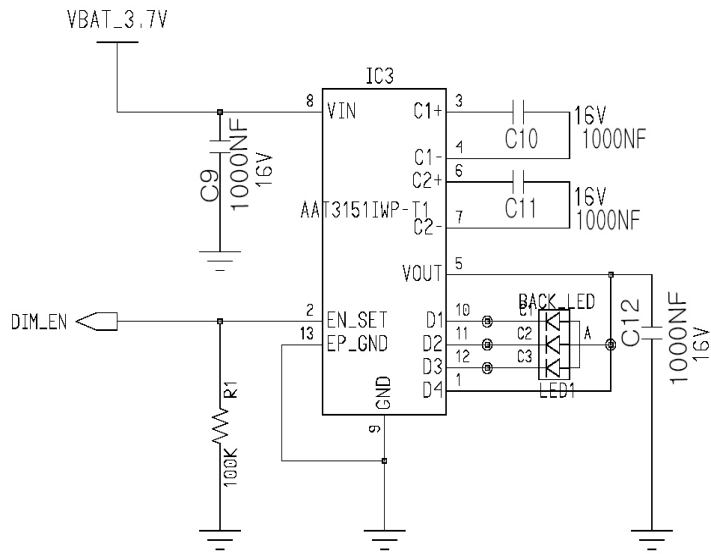
7-8. Key Data Input



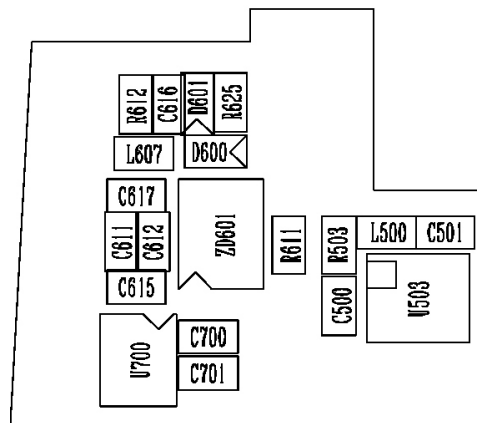
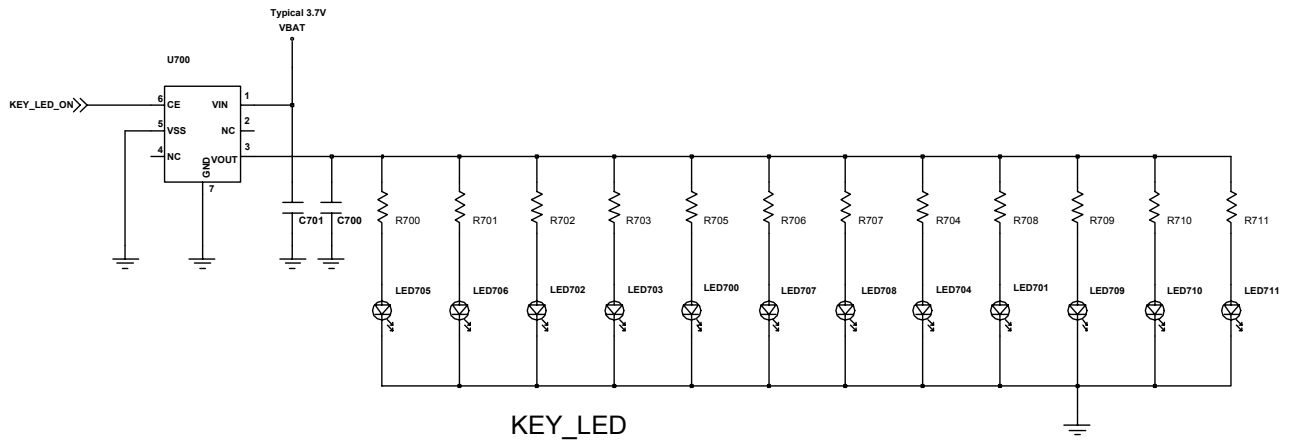
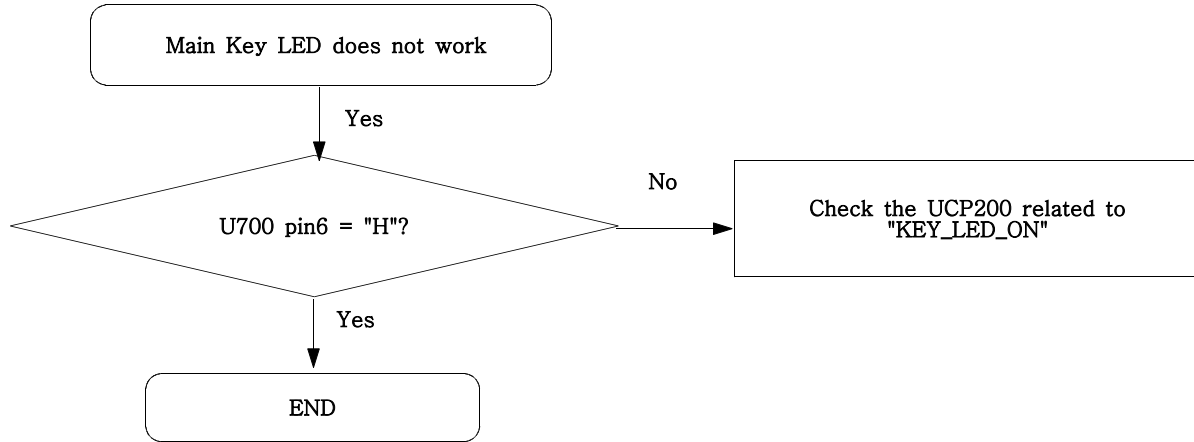


7-9. Back Light (for Color Main LCD)

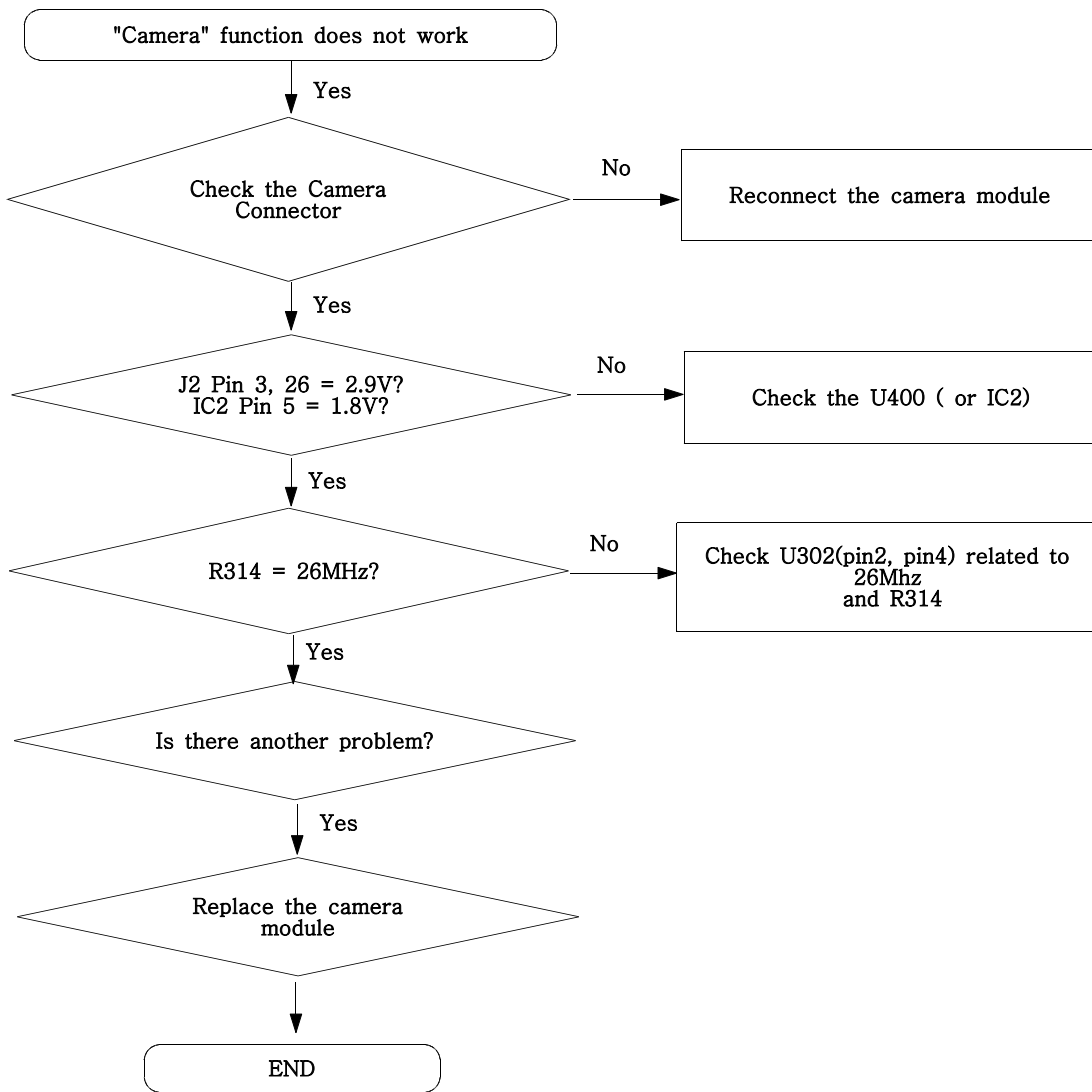




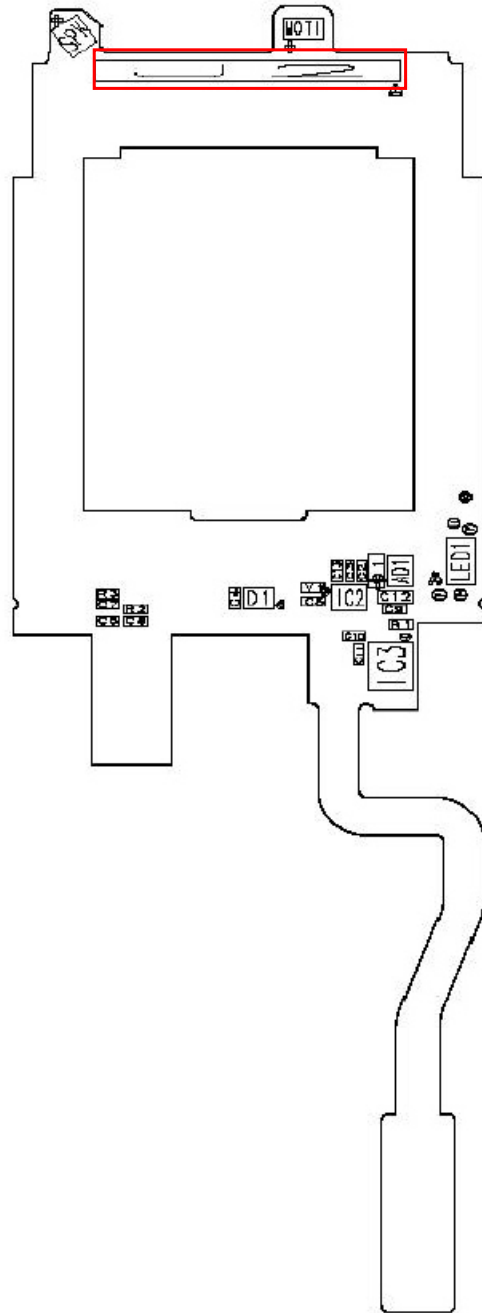
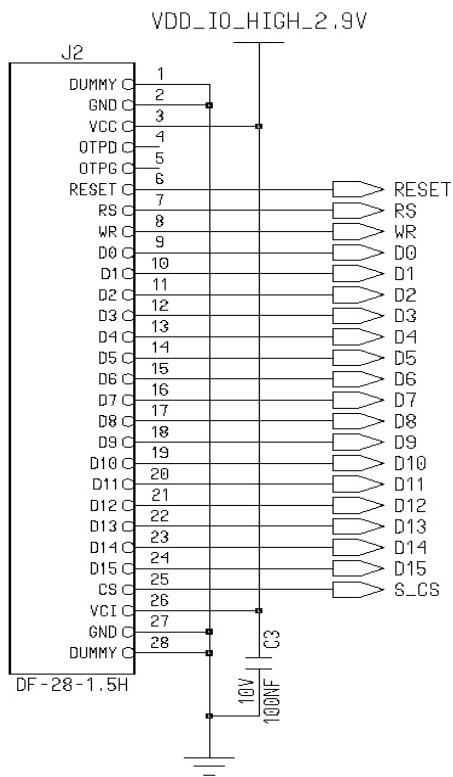
7-10. Key Back Light

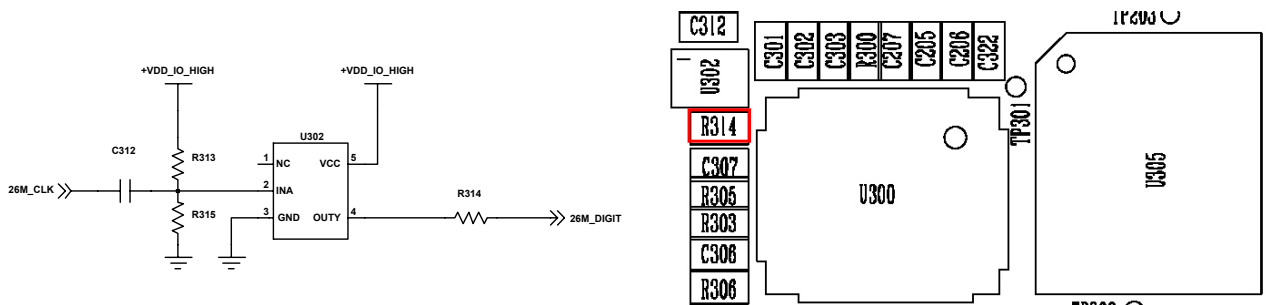
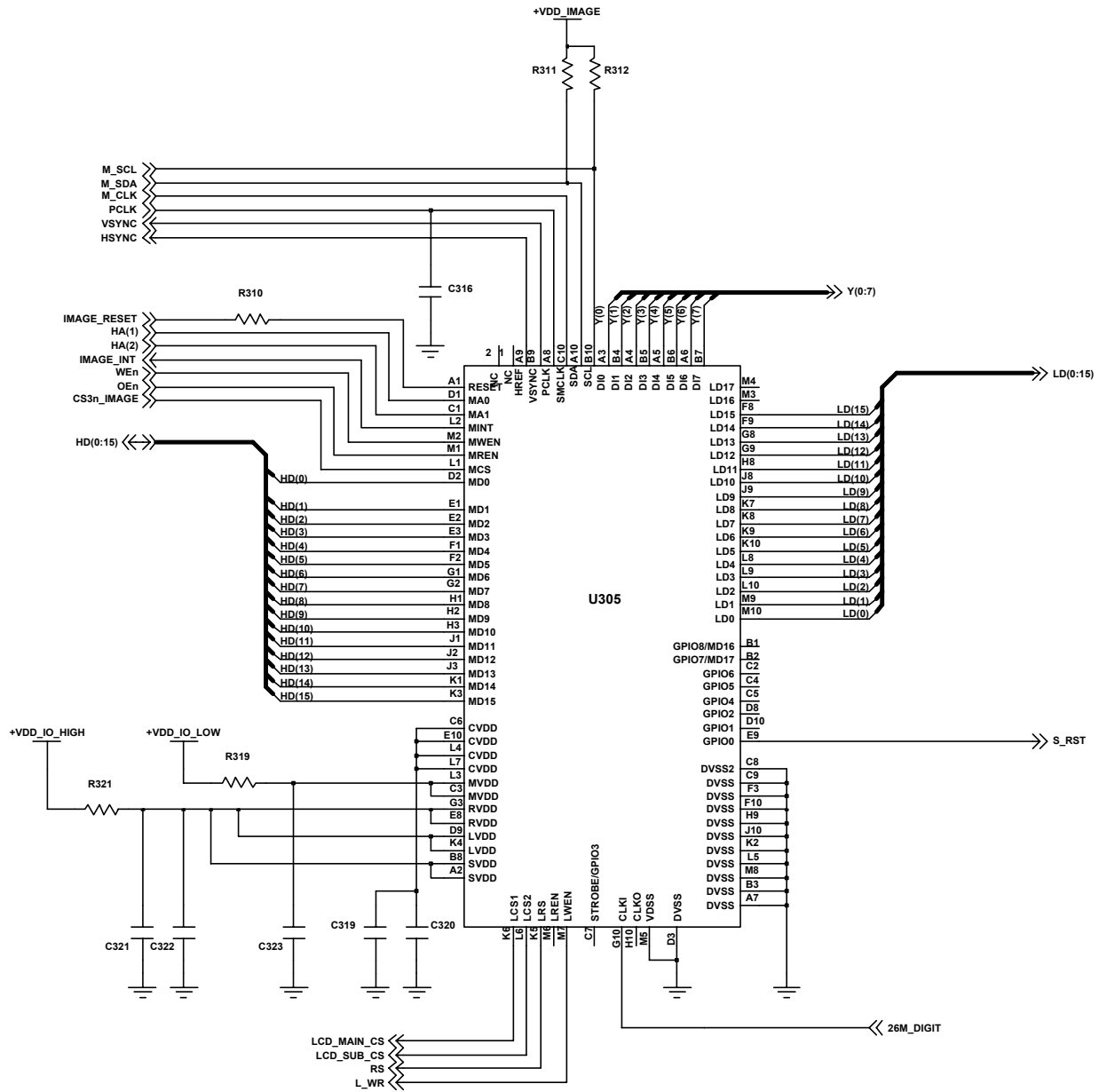


7-11. Camera part

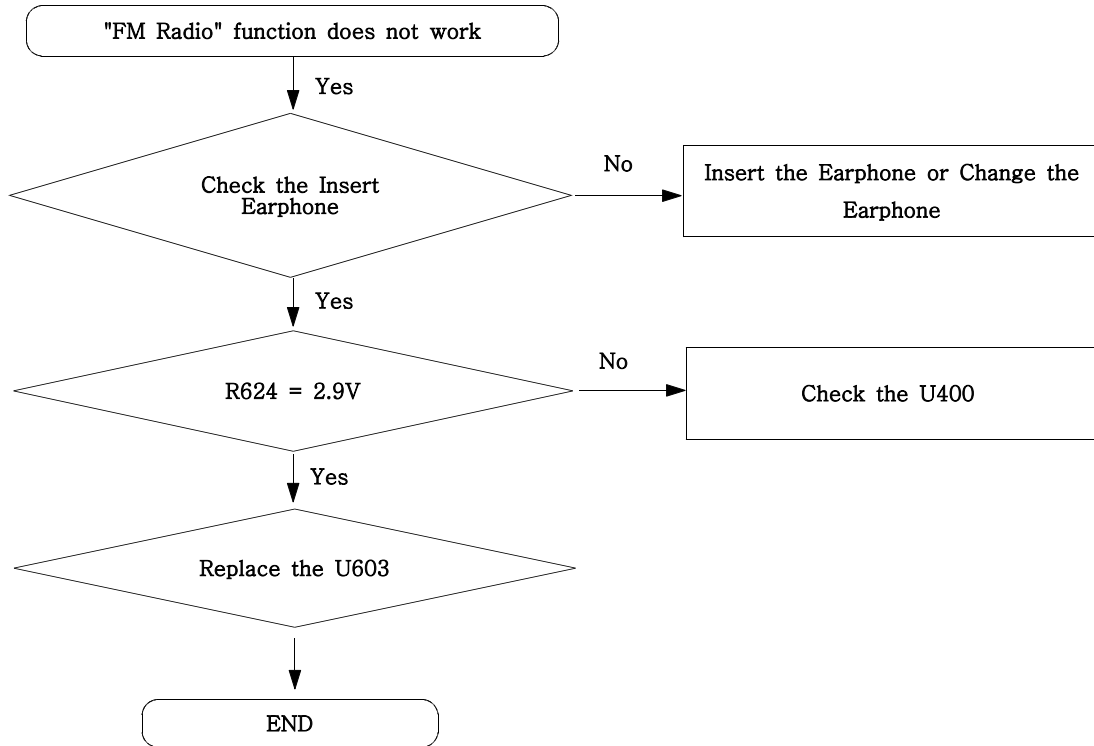


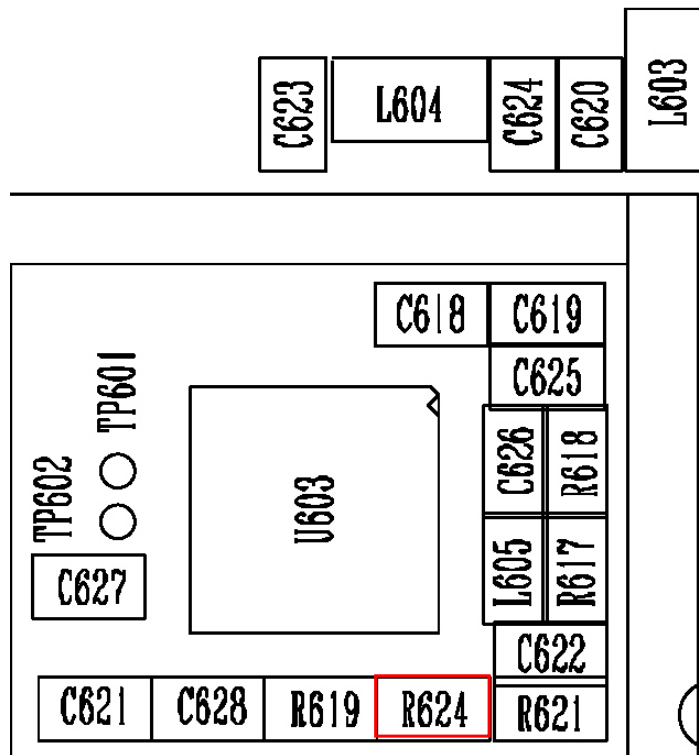
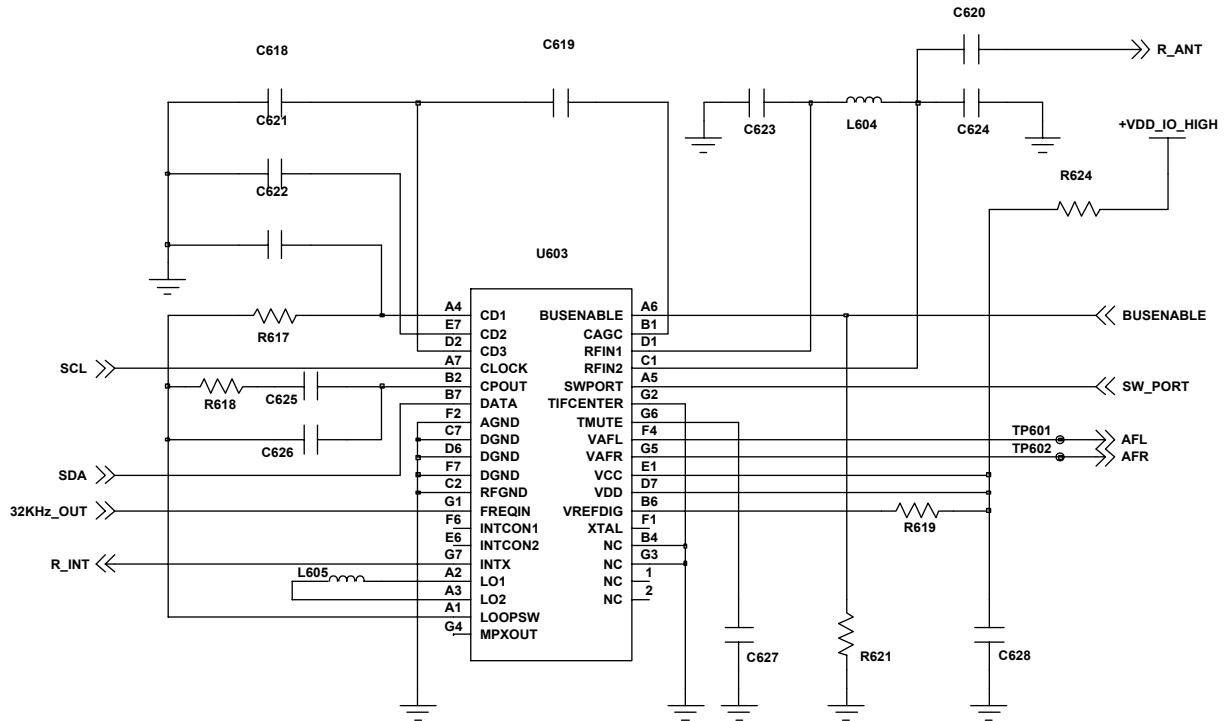
Flow Chart of Troubleshooting



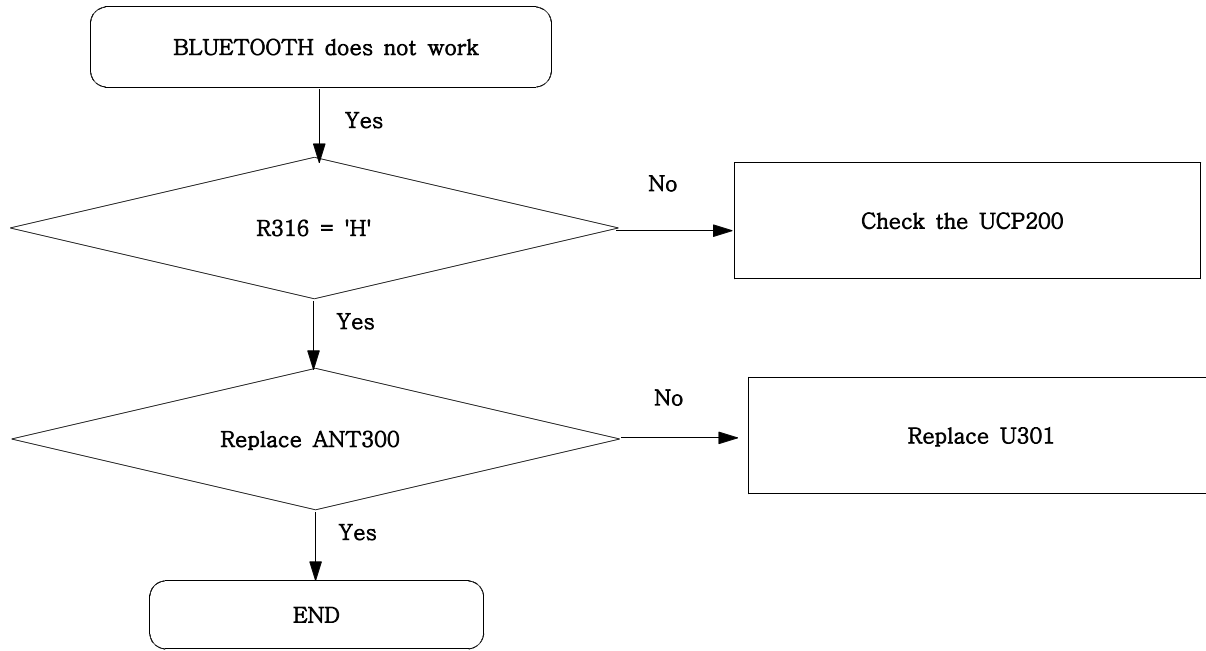


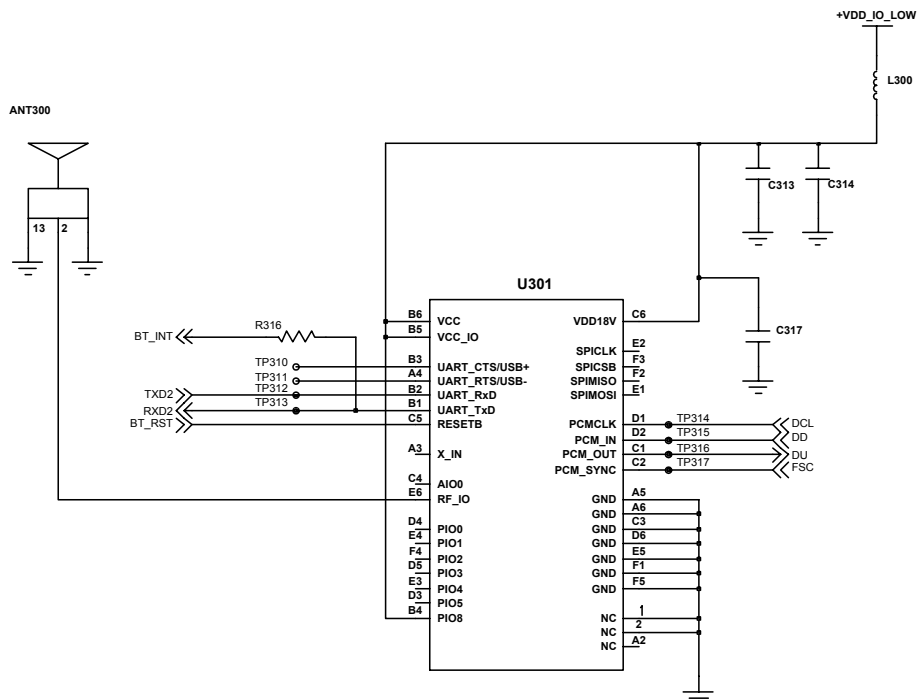
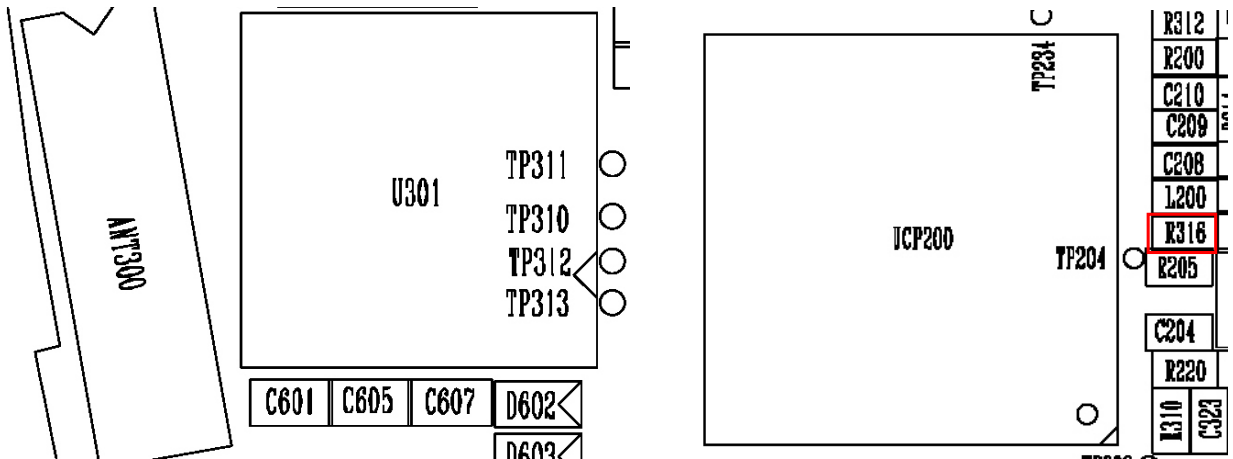
7-12. FM RADIO





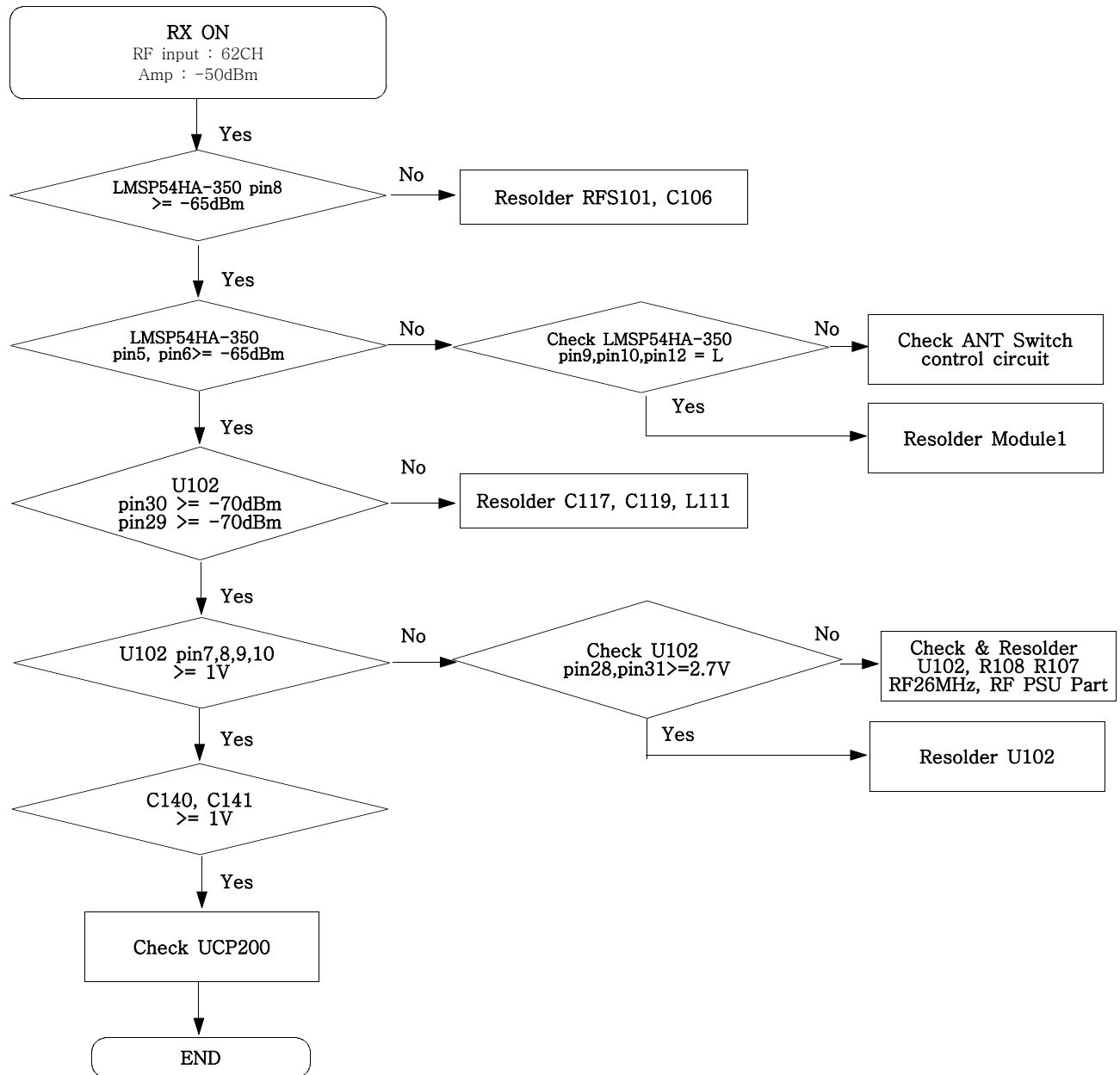
7-13. BLUETOOTH



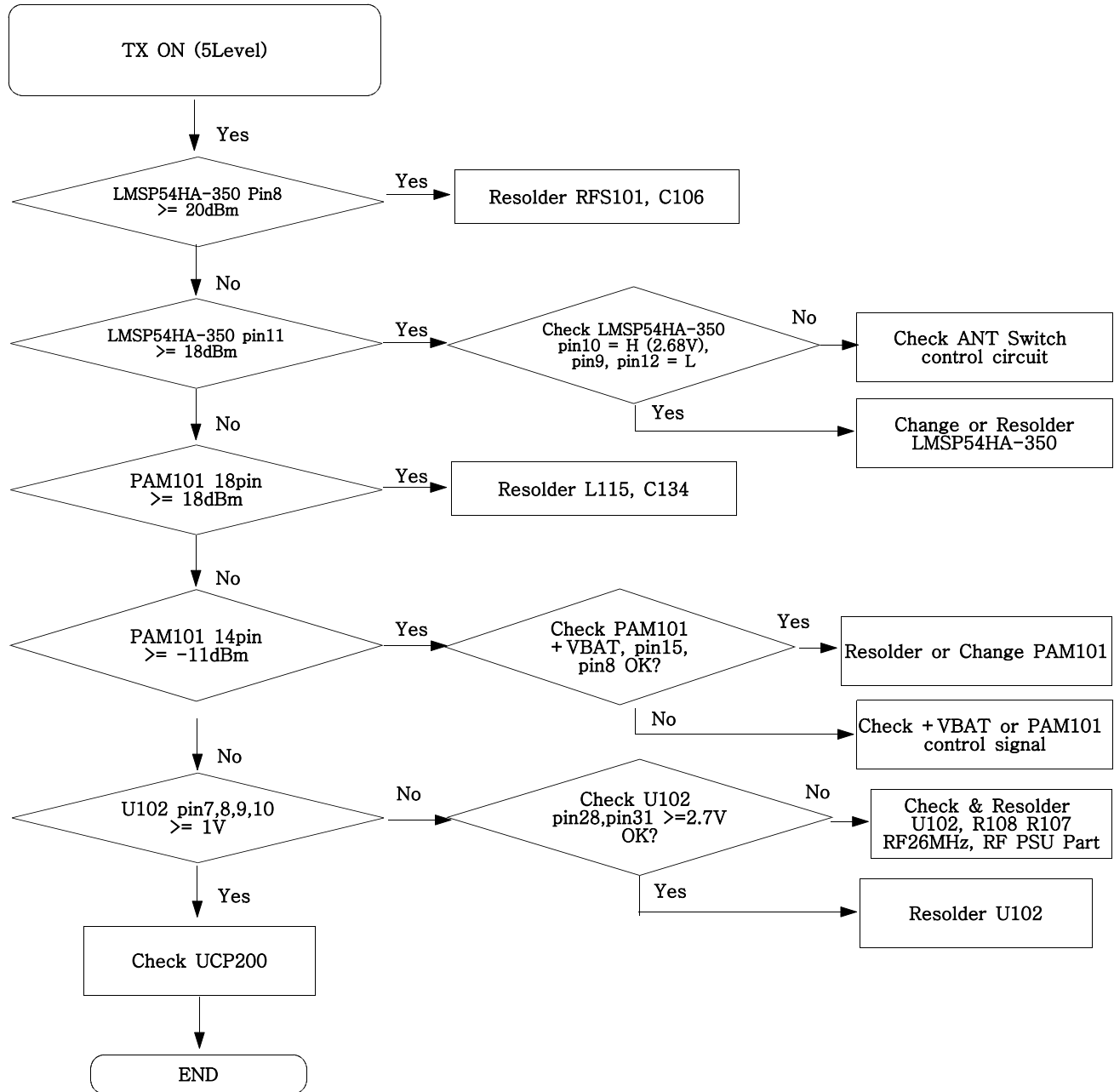


BLUE TOOTH

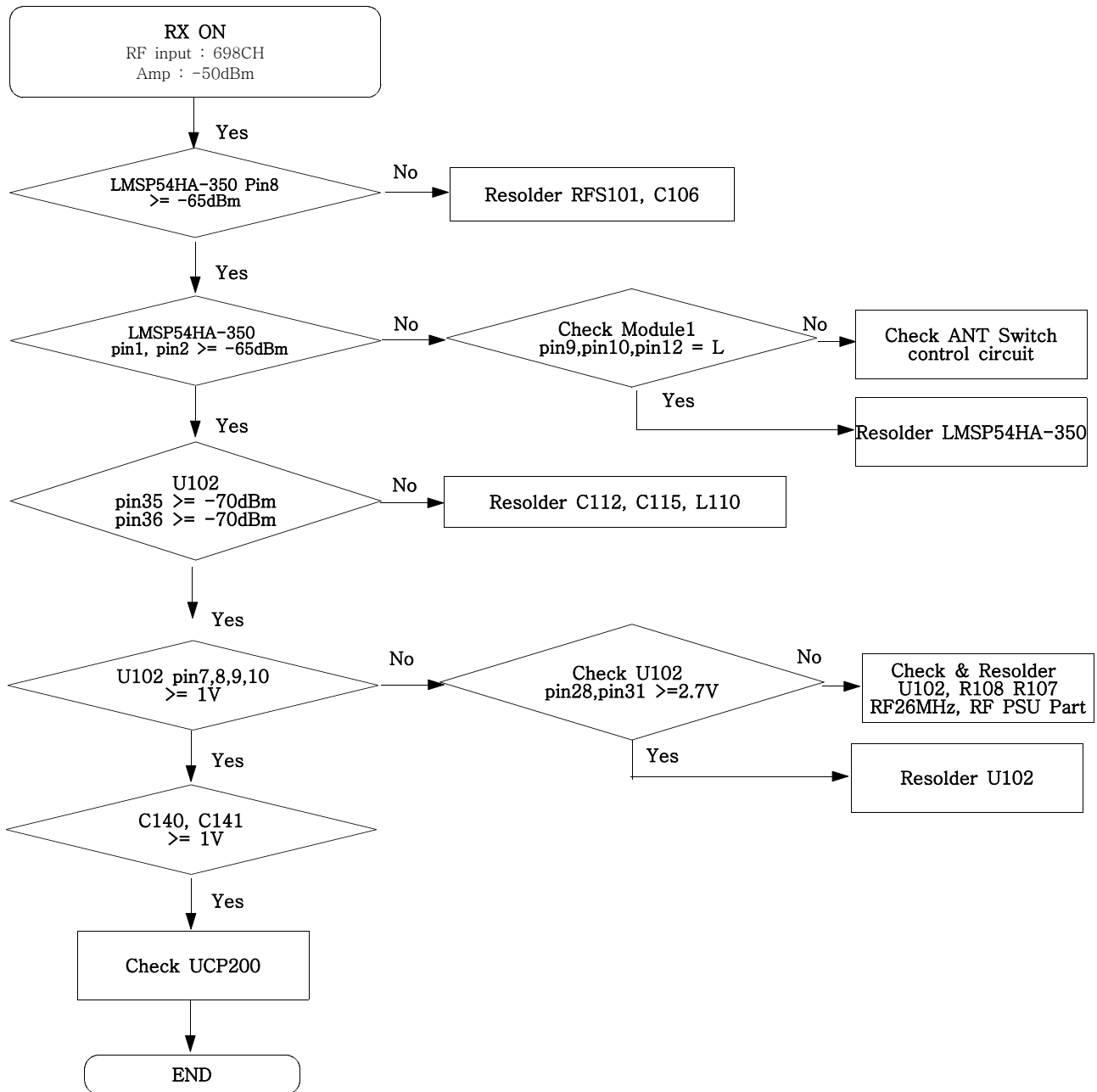
7-14. GSM Receiver



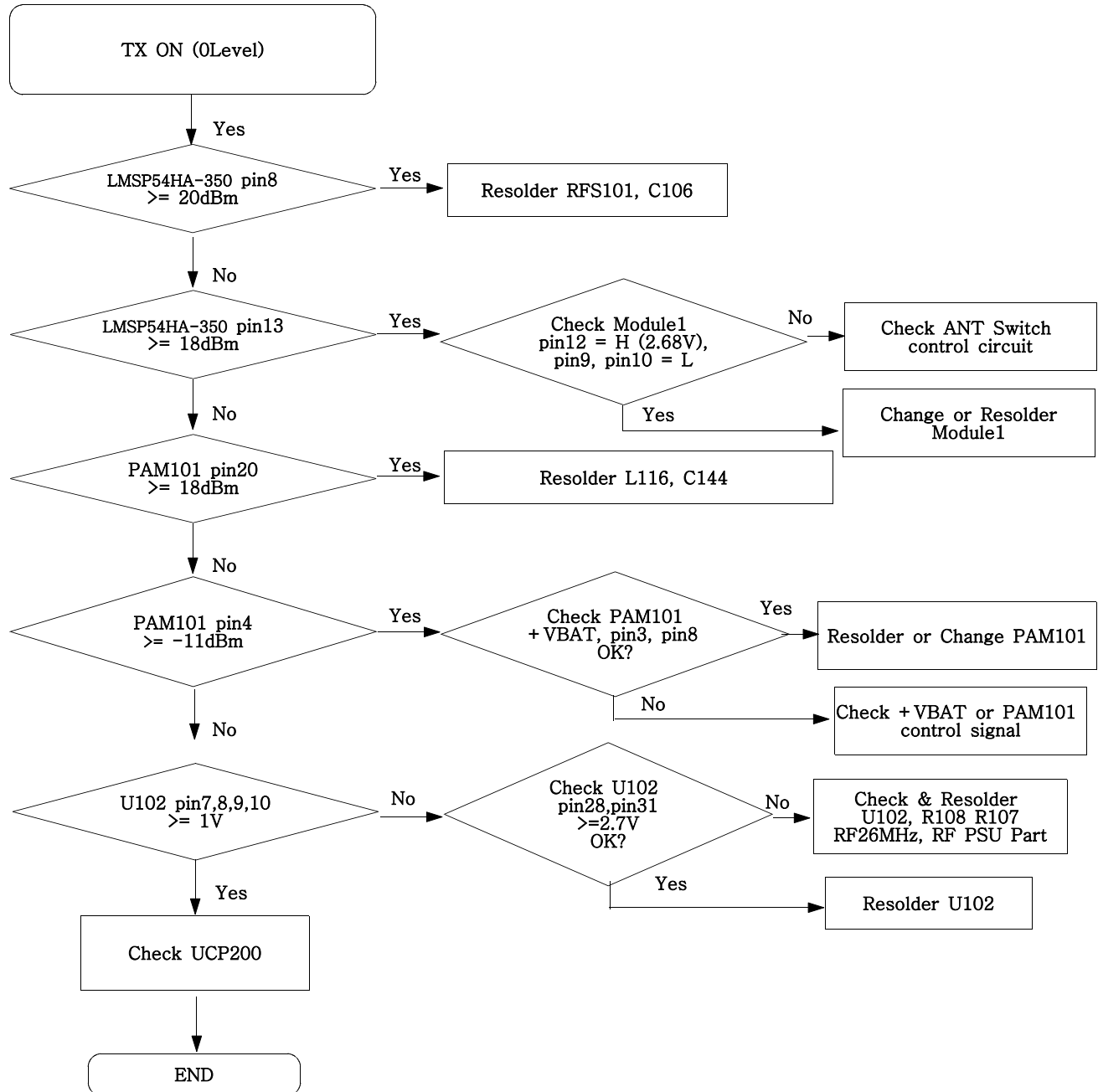
7-15. GSM Transmitter



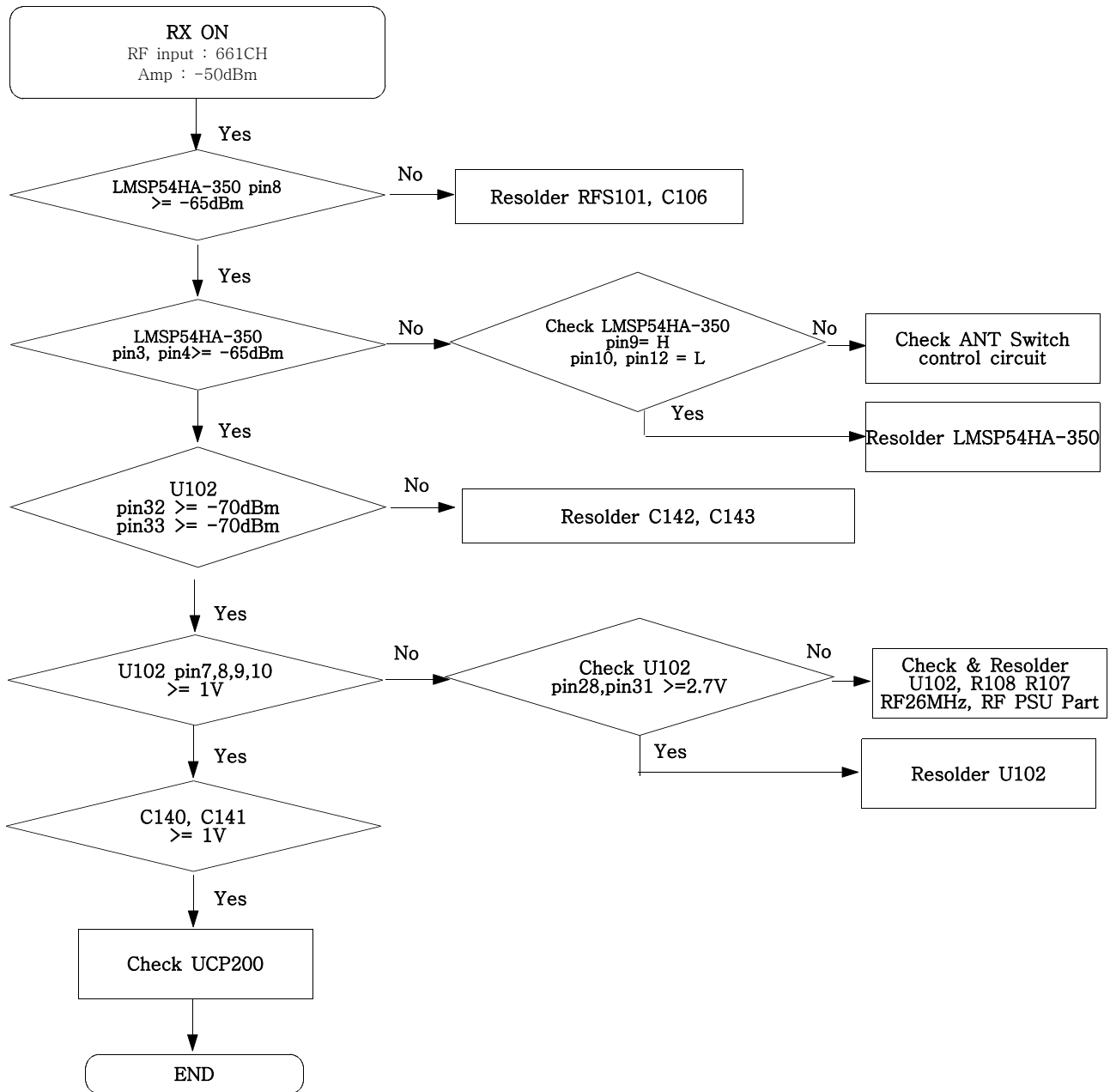
7-16. DCS Receiver



7-17. DCS Transmitter



7-18. PCS Receiver



7-19. PCS Transmitter

