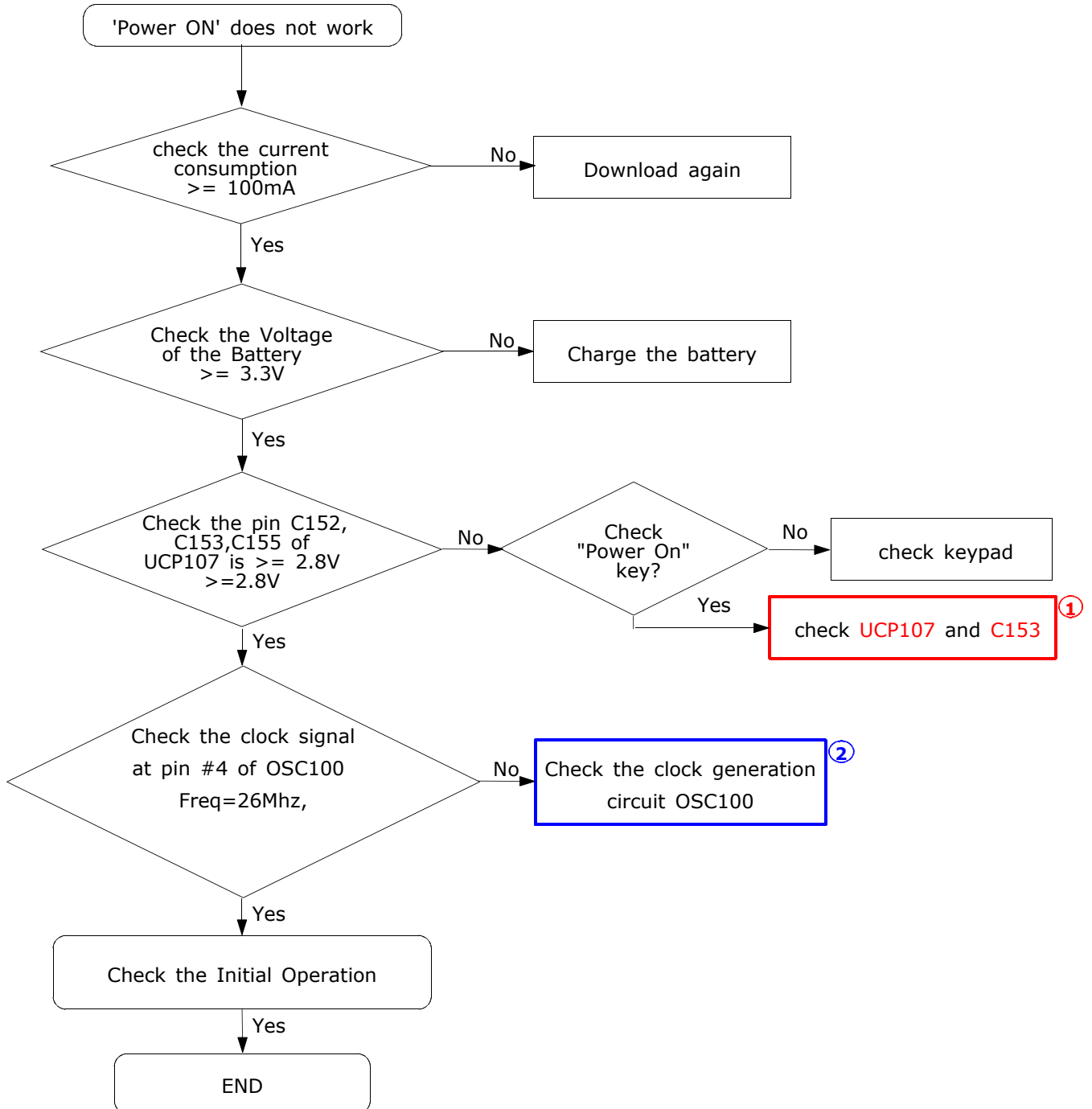
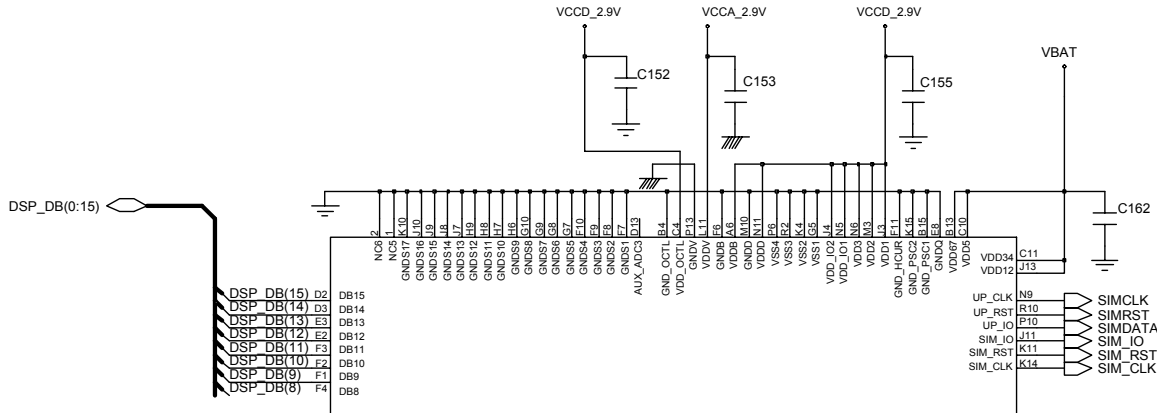


# 10. Flow Chart of Troubleshooting

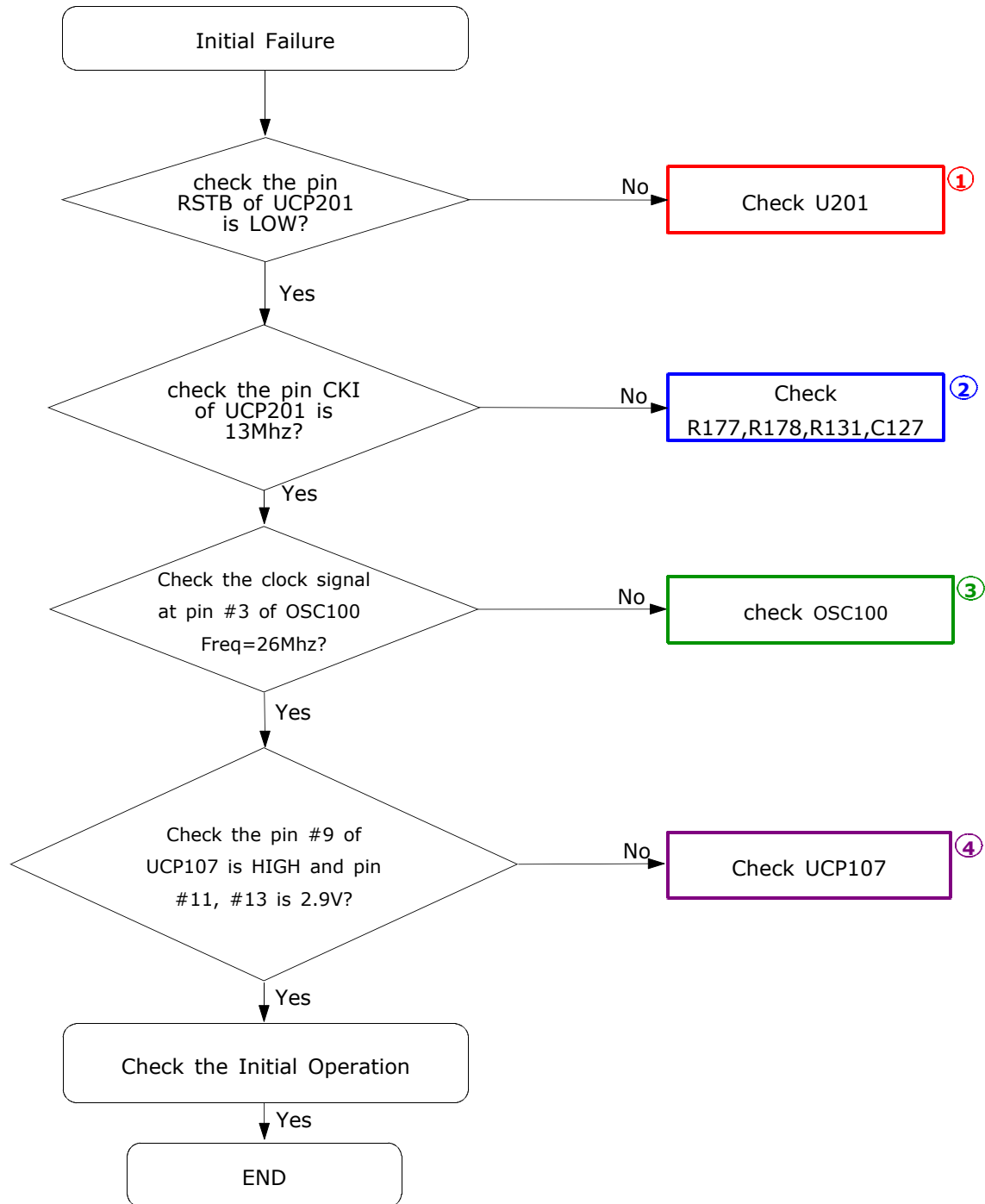
## 10-1. Baseband

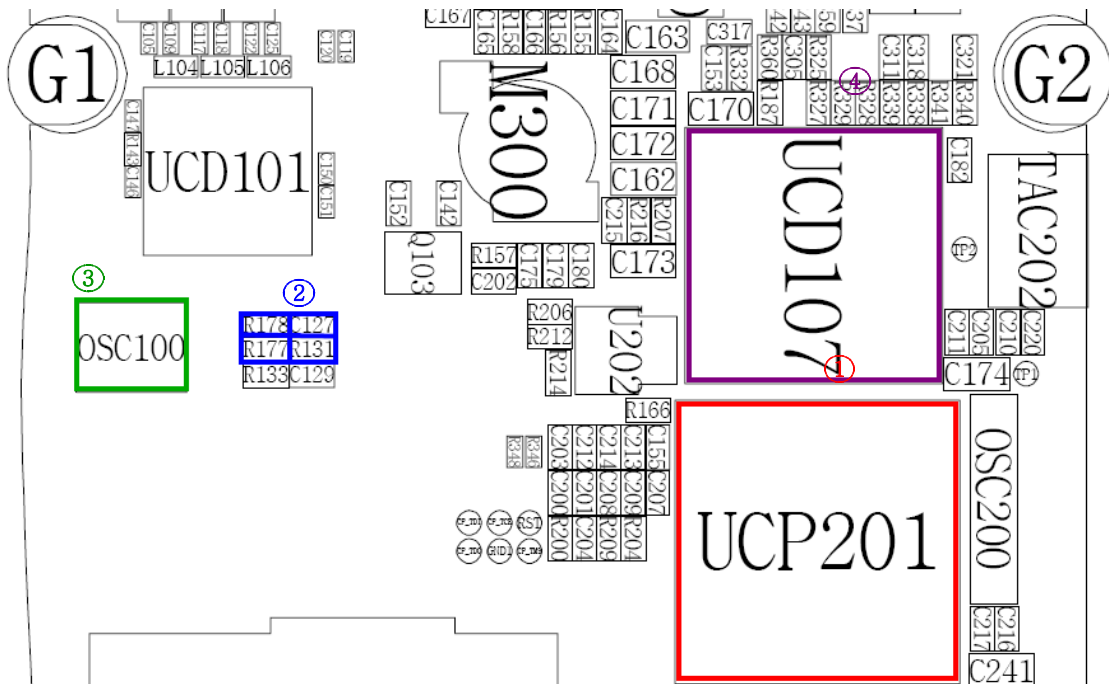
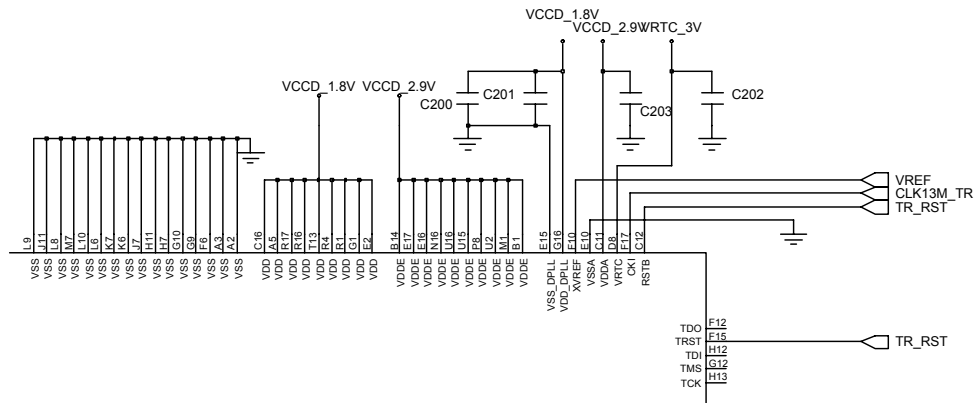
### 10-1-1. Power ON



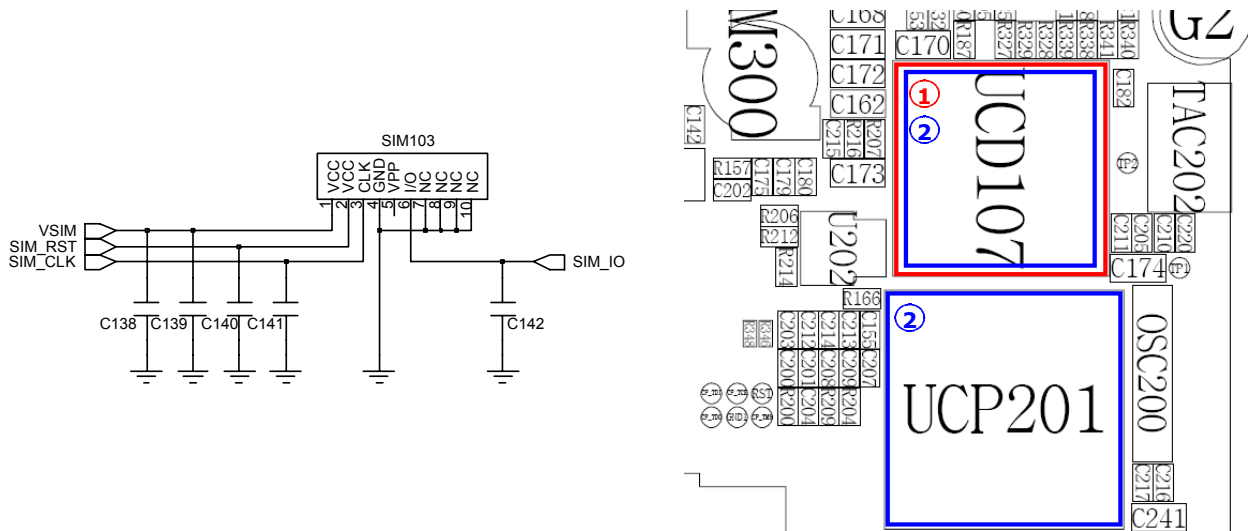
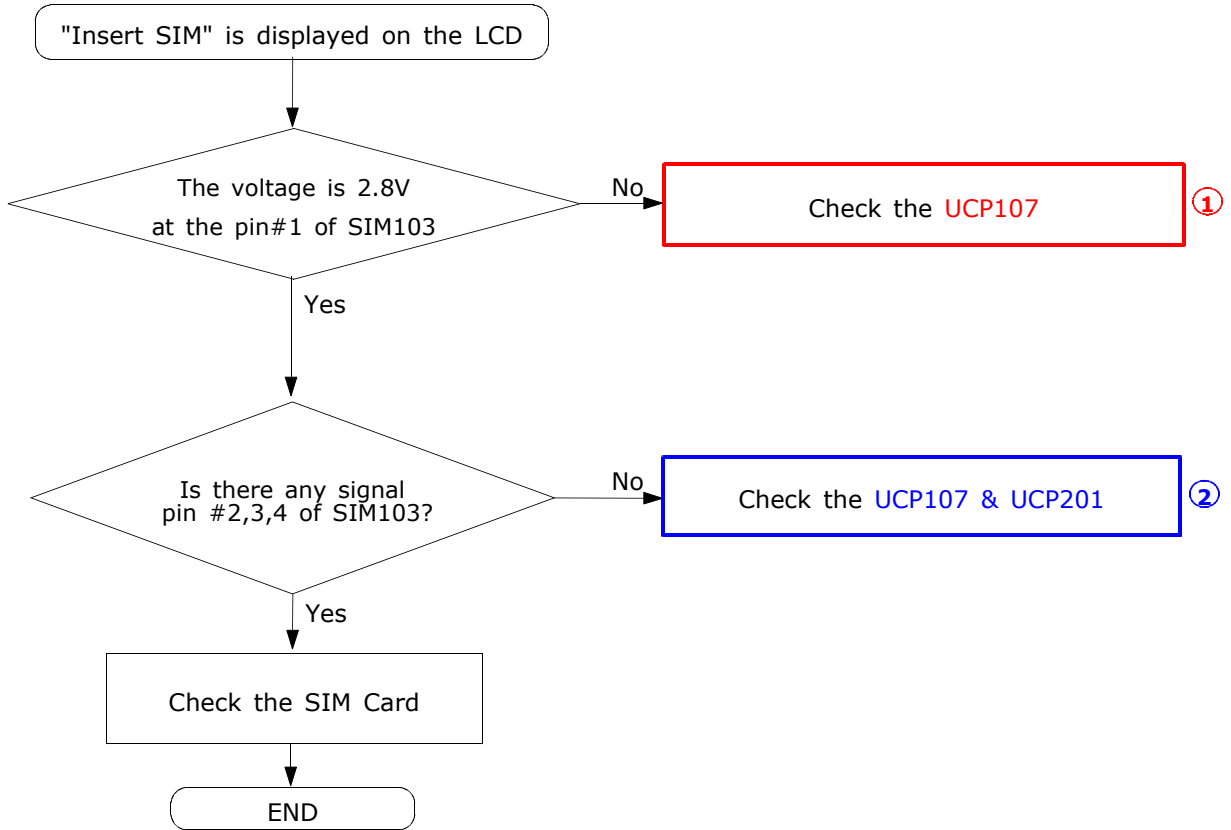


10-1-2. Initial



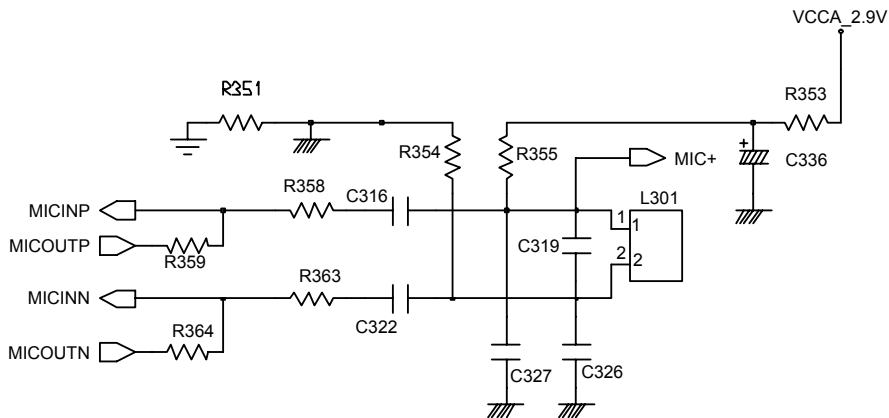
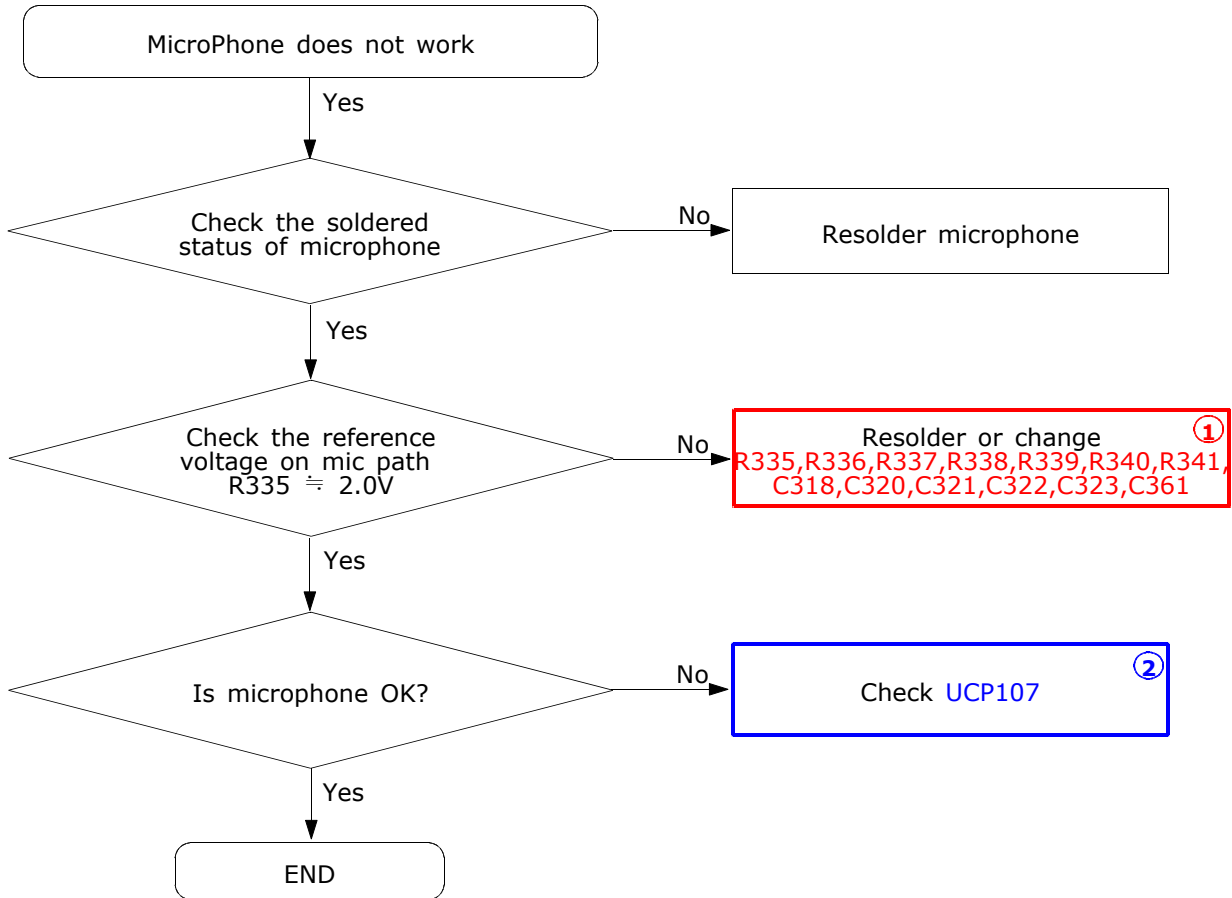


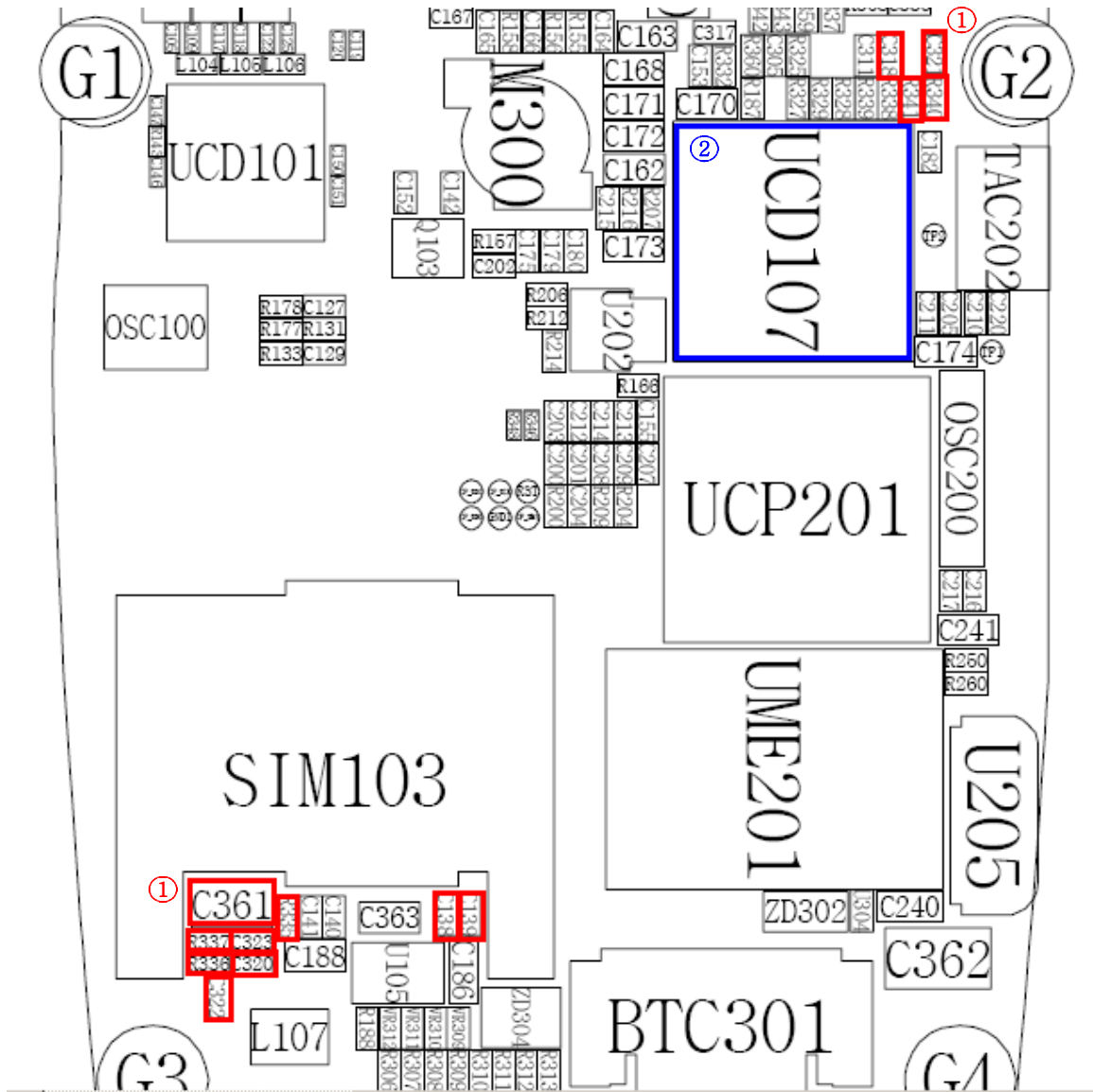
### 10-1-3. Sim Part



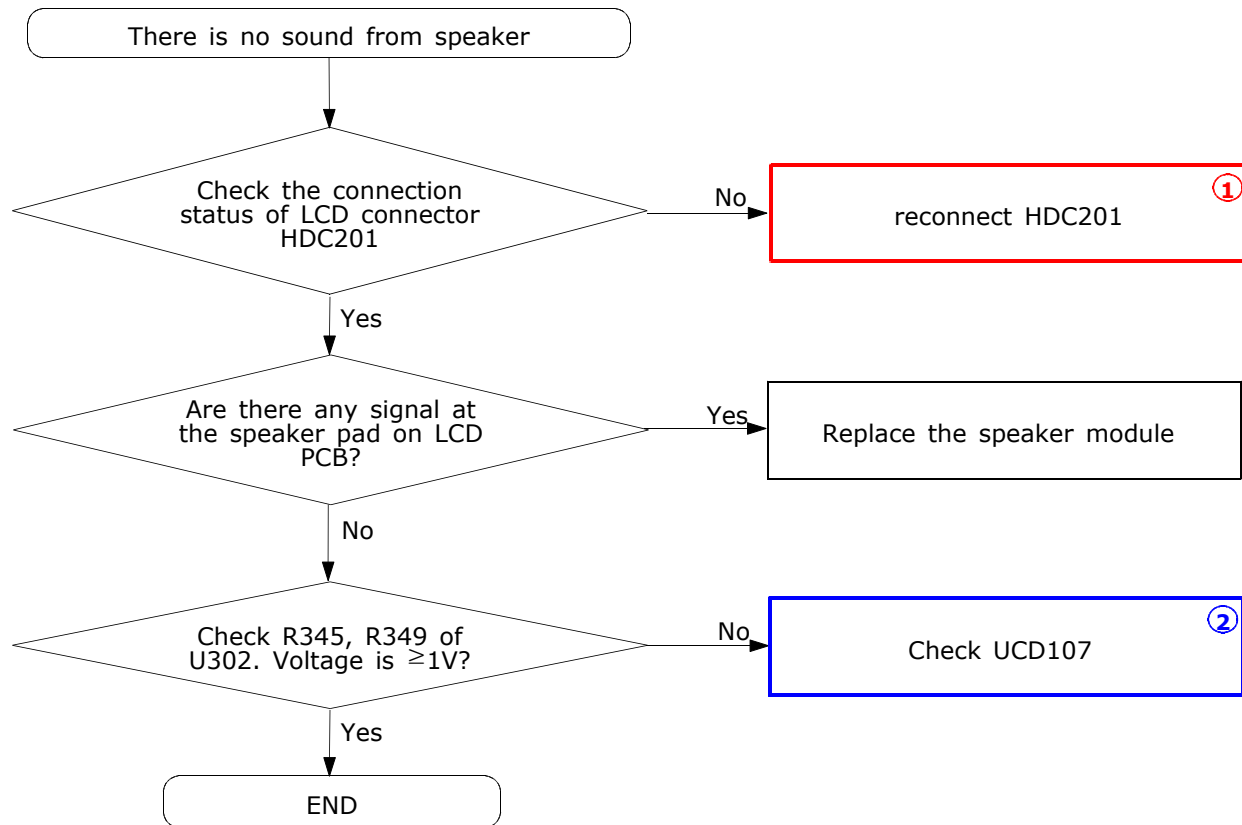
### 10-1-4. Microphone Part

\* Call with Sim before testing.

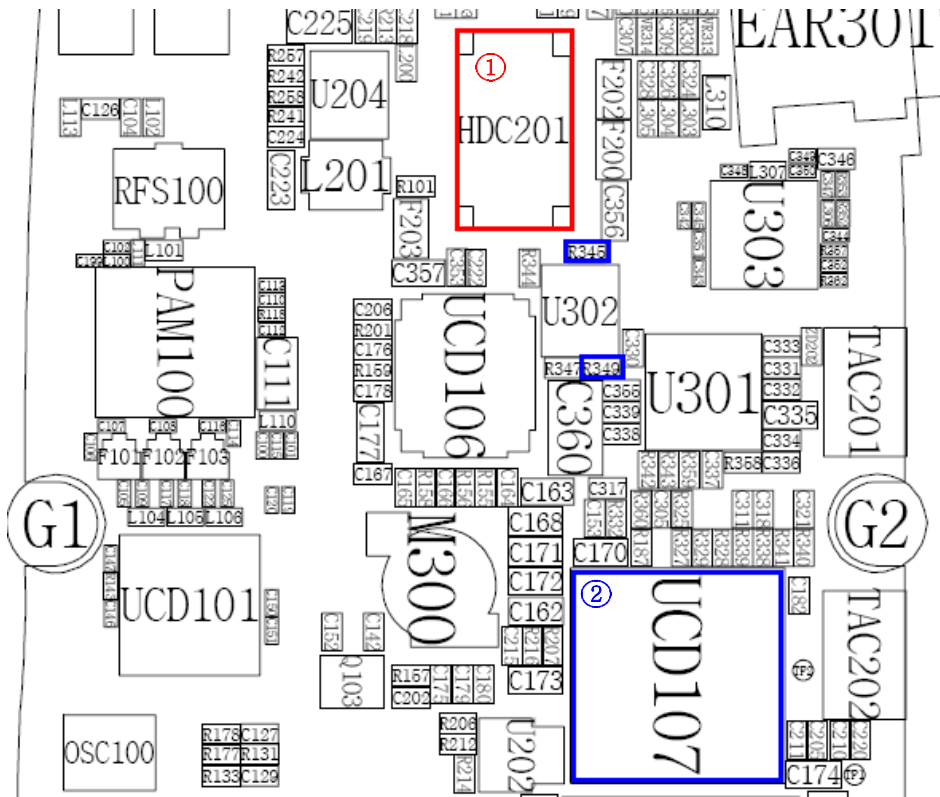




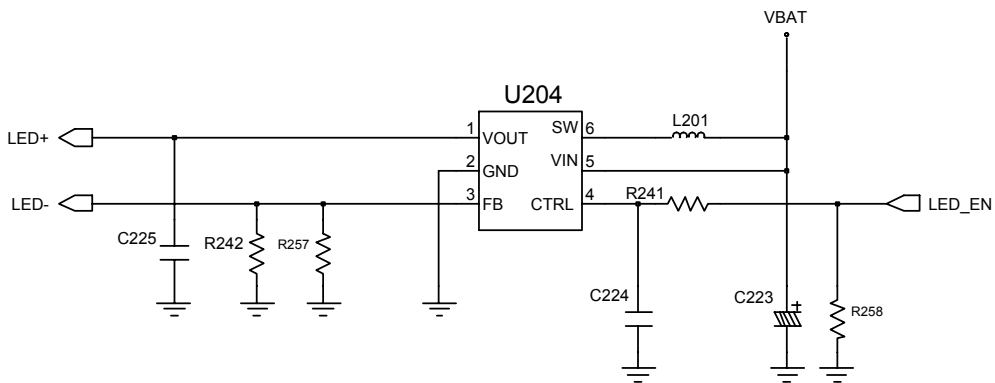
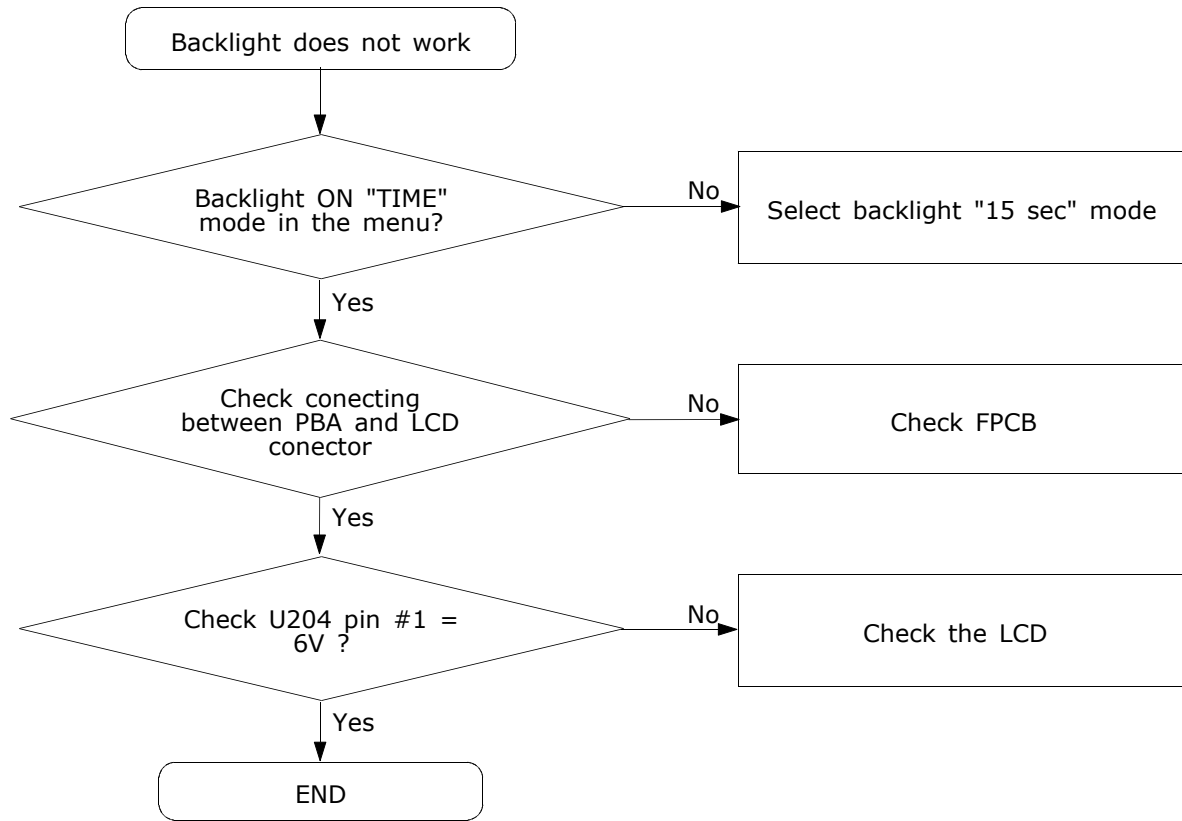
## 10-1-5. Speaker Part





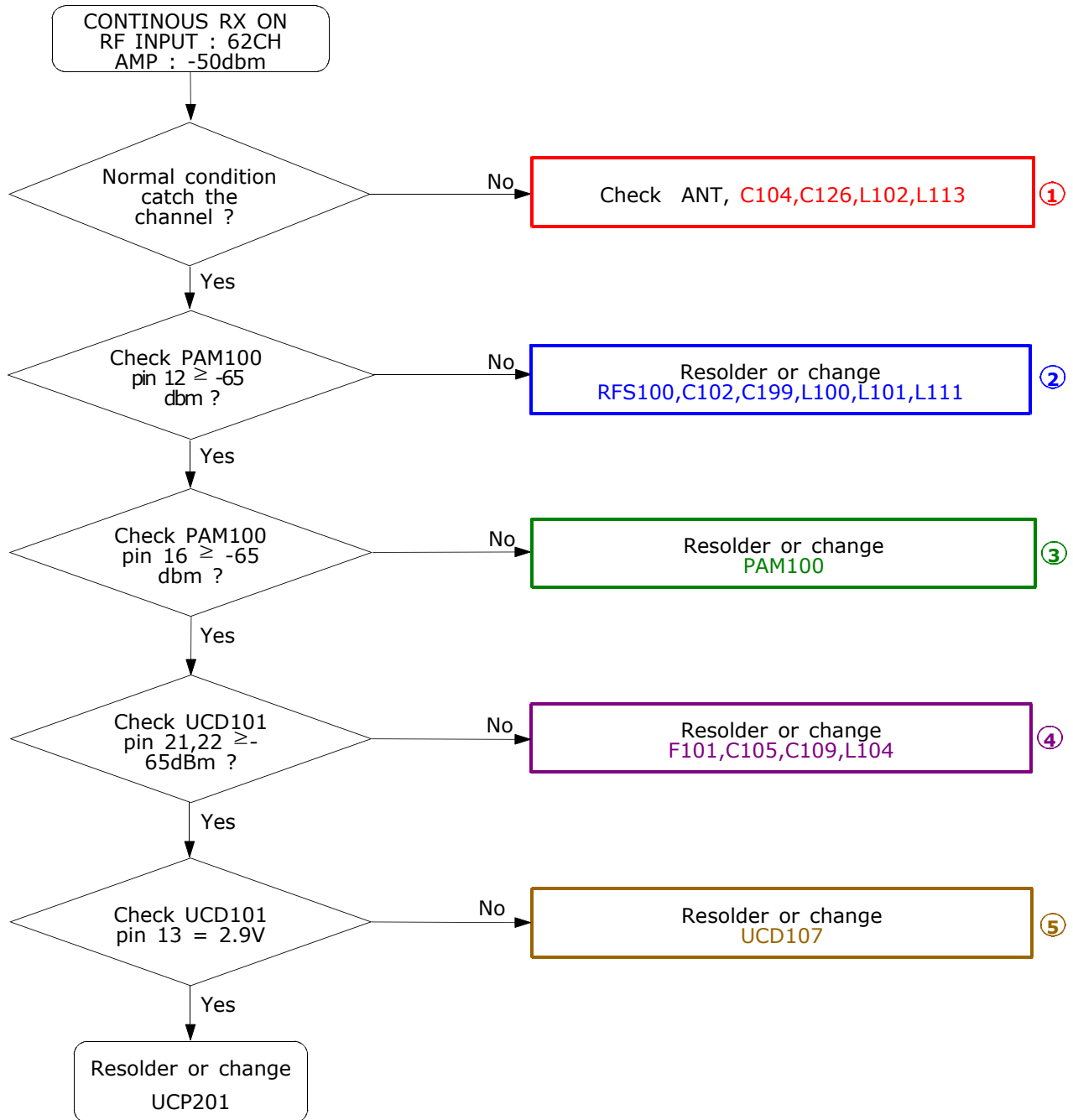


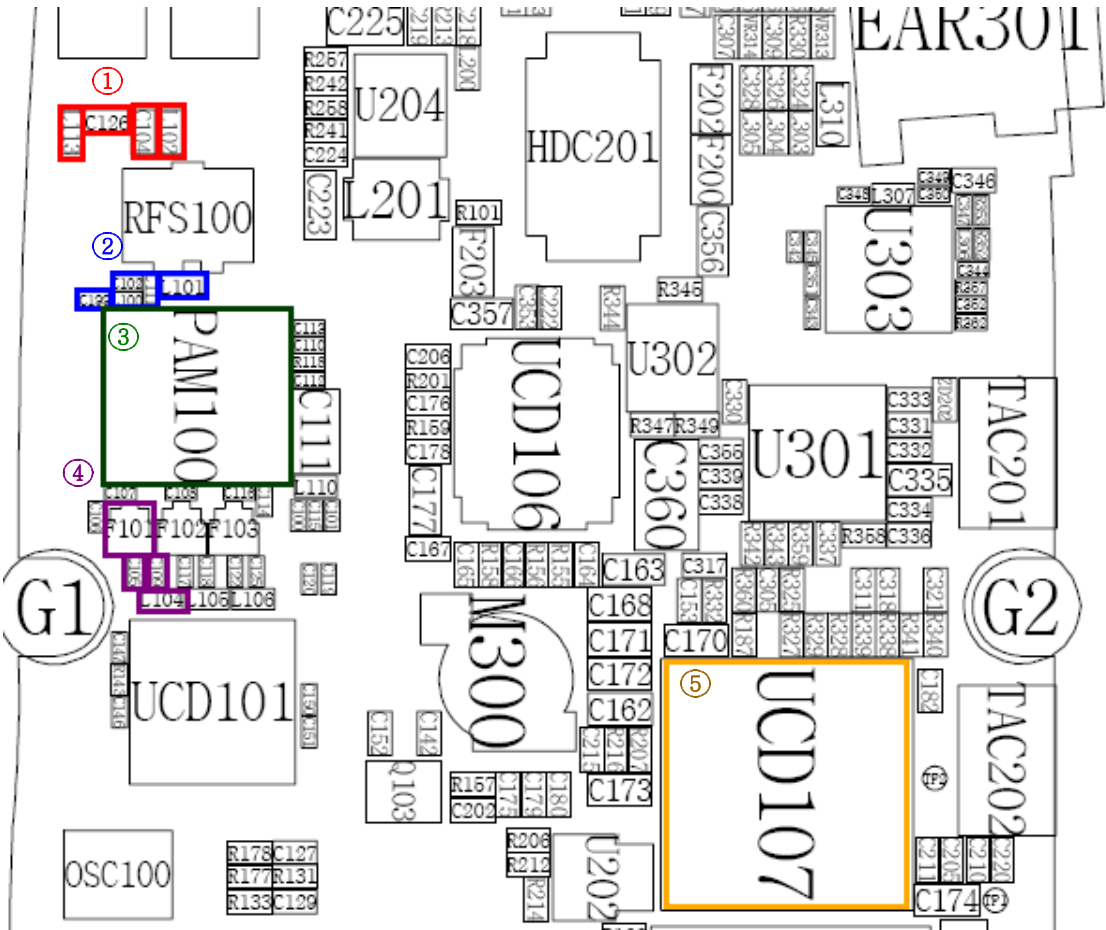
10-1-6. LCD backlight



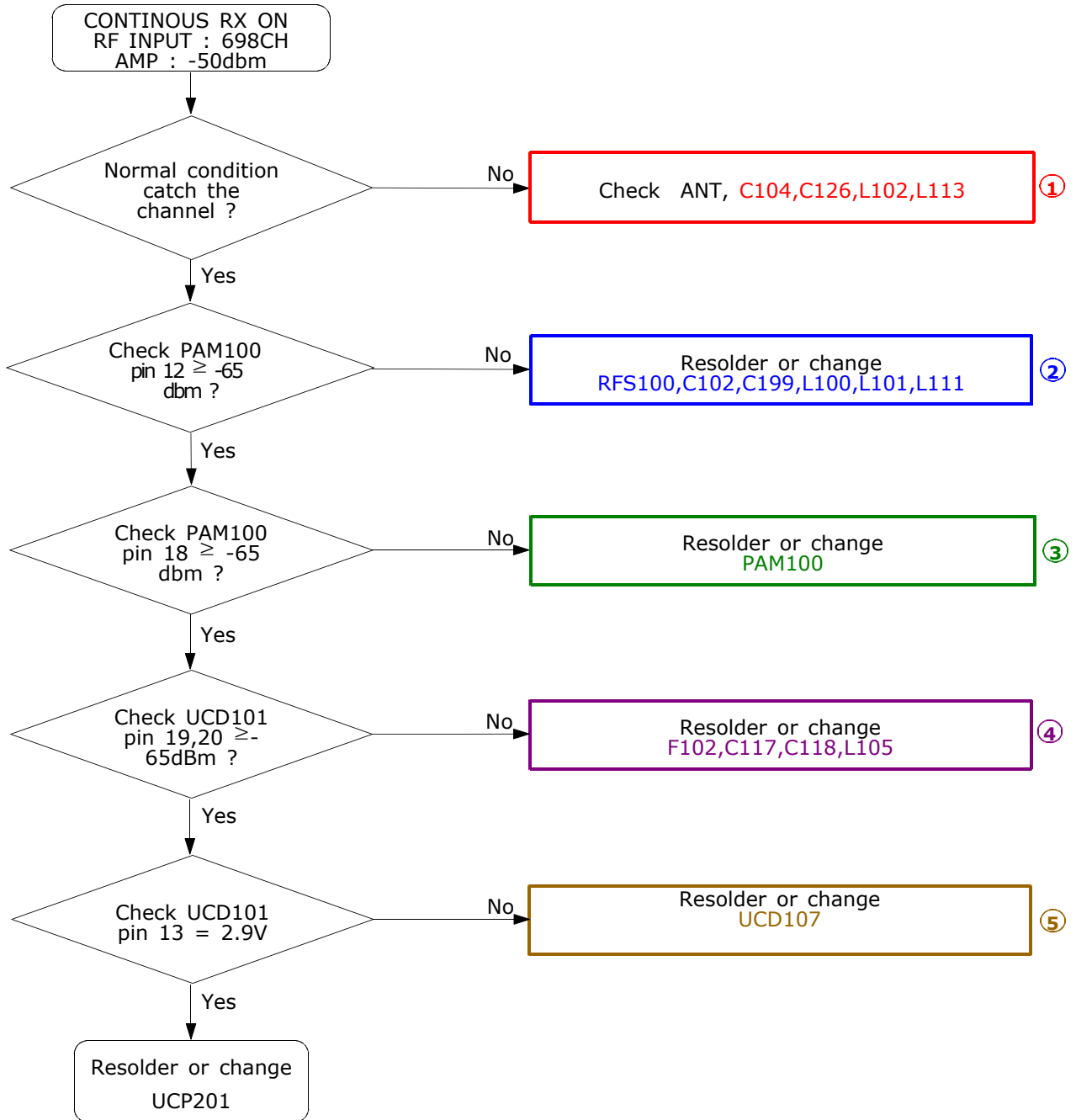
## 10-2. RF

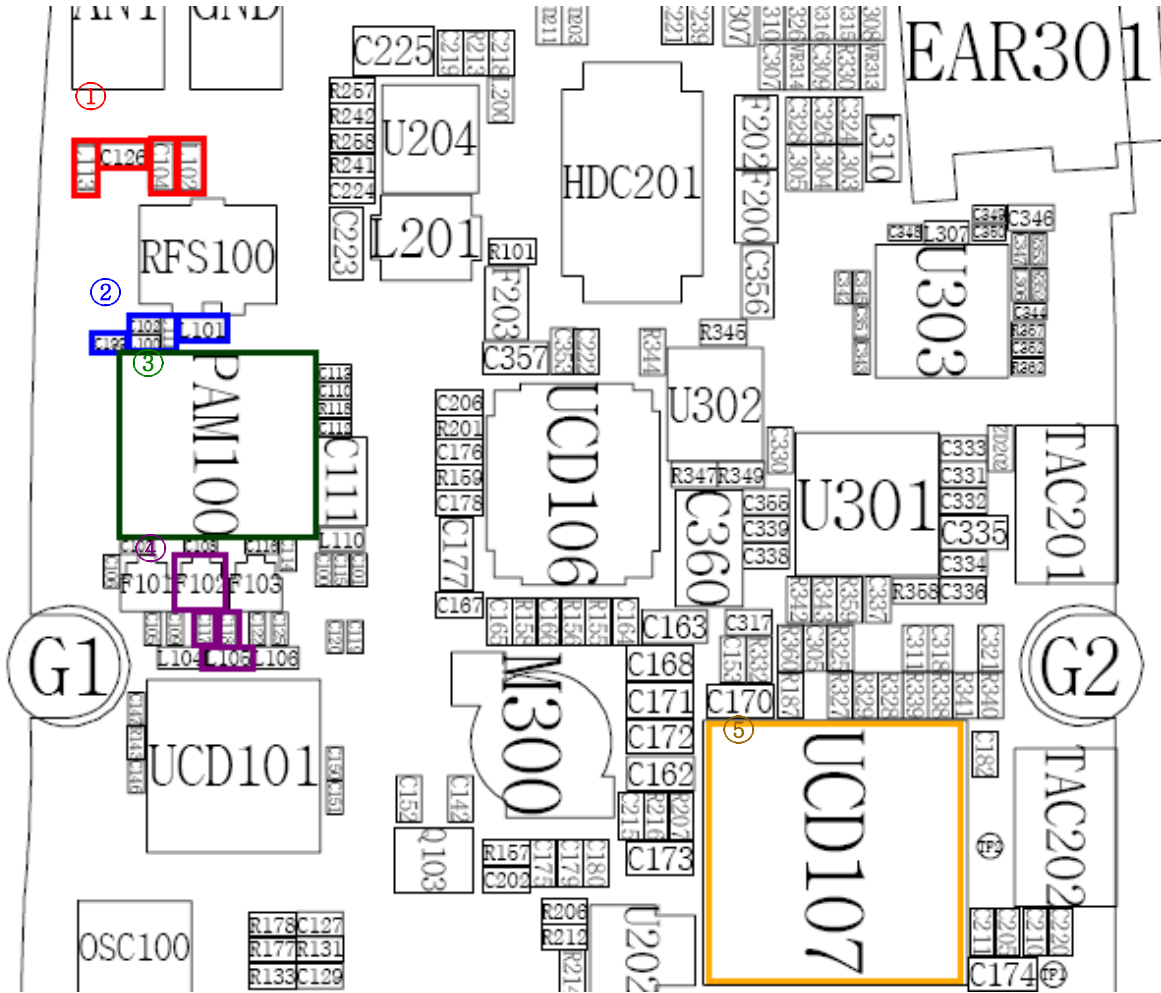
### 10-2-1. GSM Rx



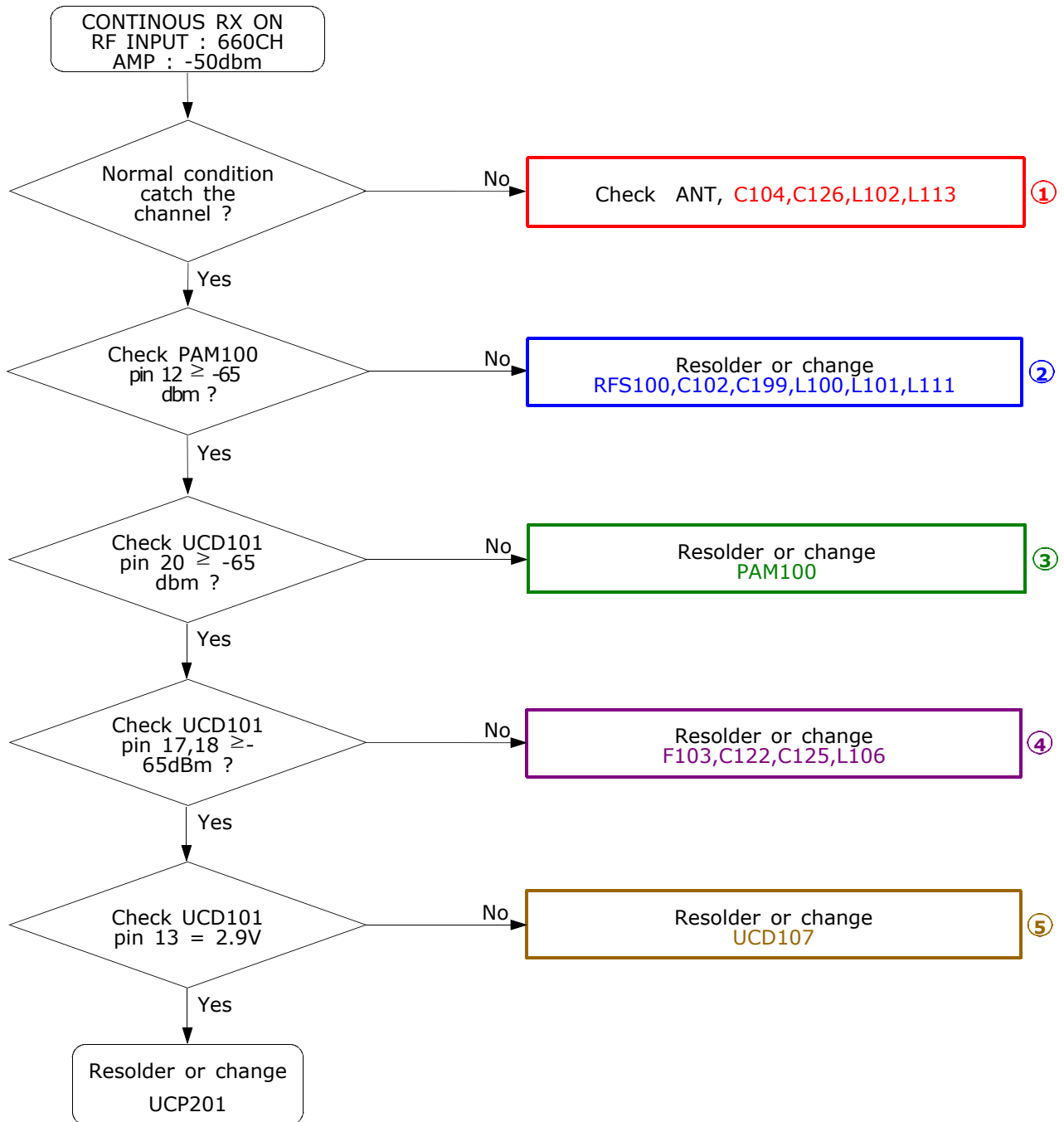


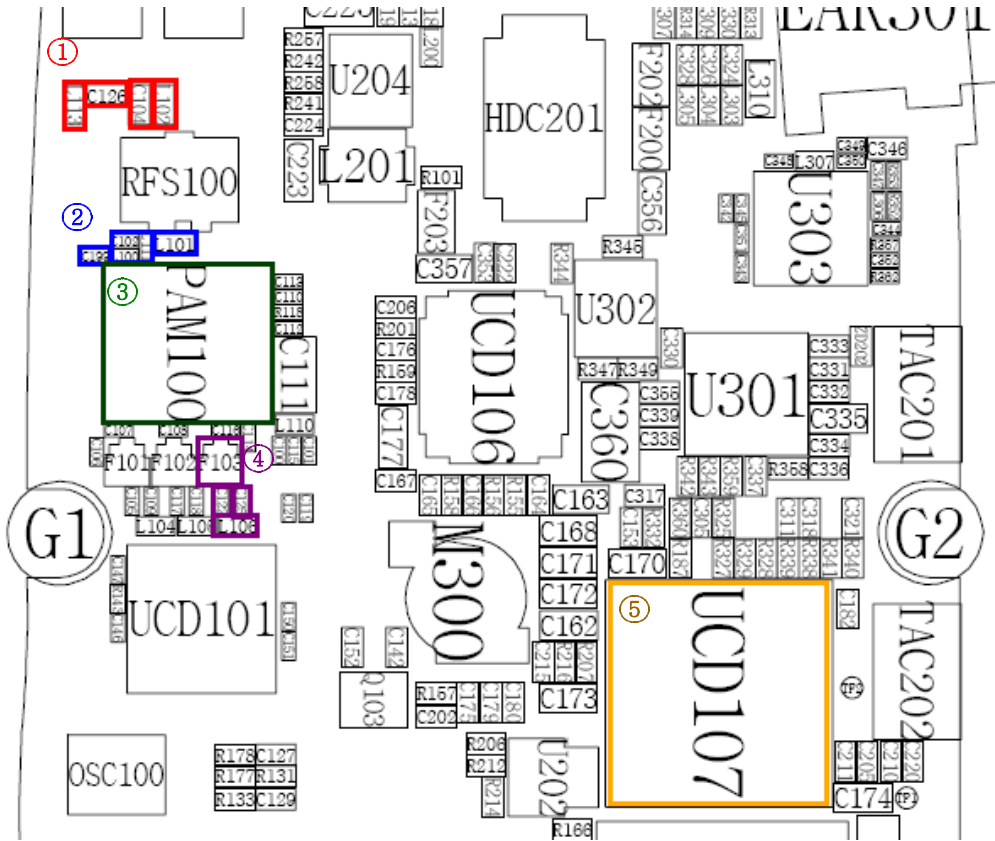
10-2-2. DCS Rx



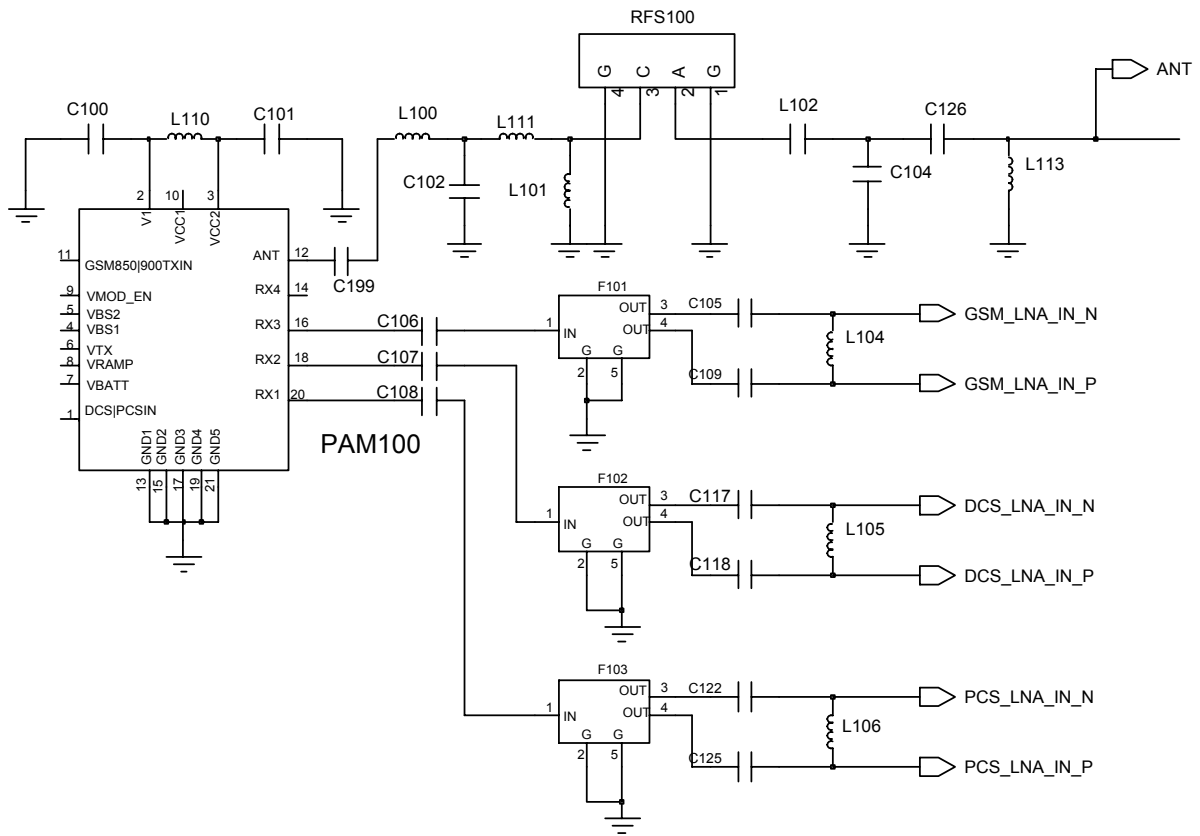


10-2-3. PCS Rx

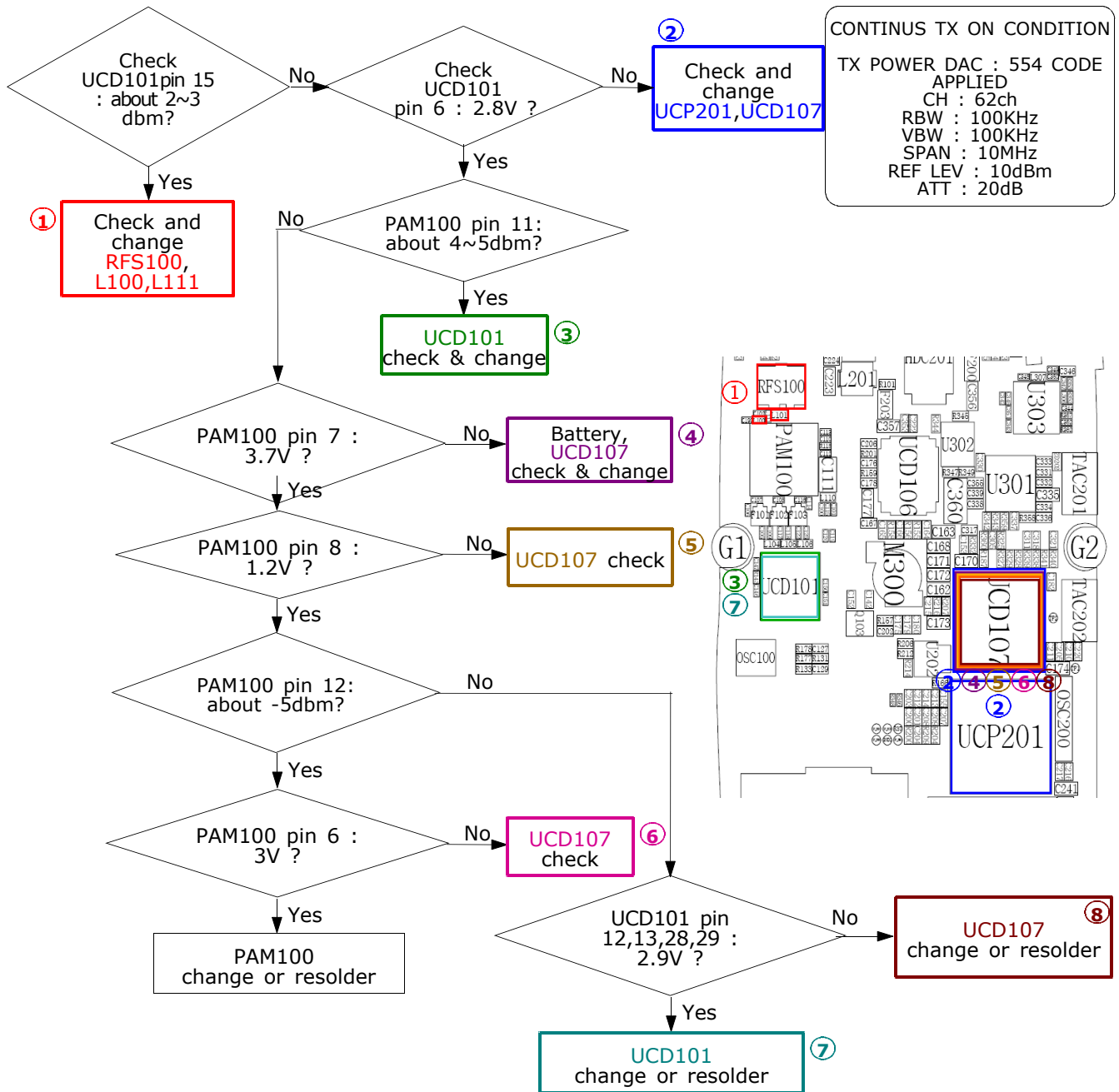








10-2-4. GSM Tx



10-2-5. DCS/PCS Tx

