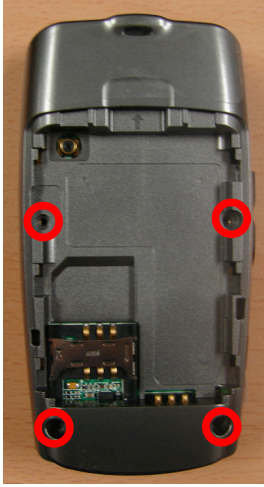
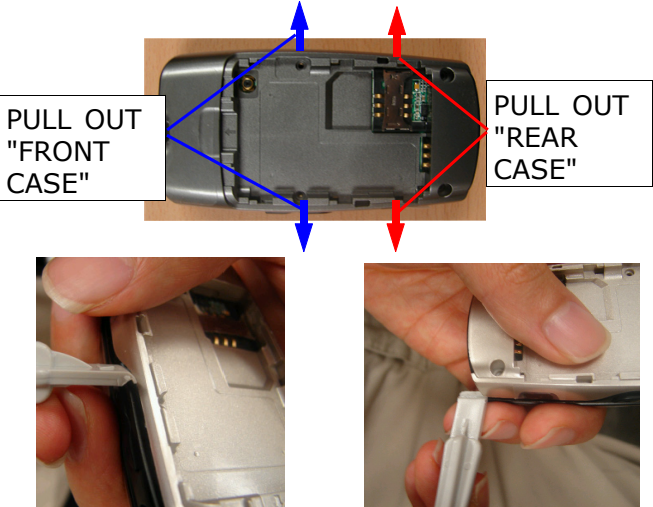
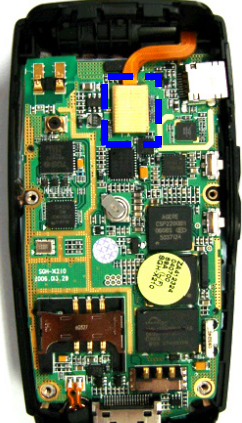



6. Disassembly and Assembly instructions

6-1. Disassembly

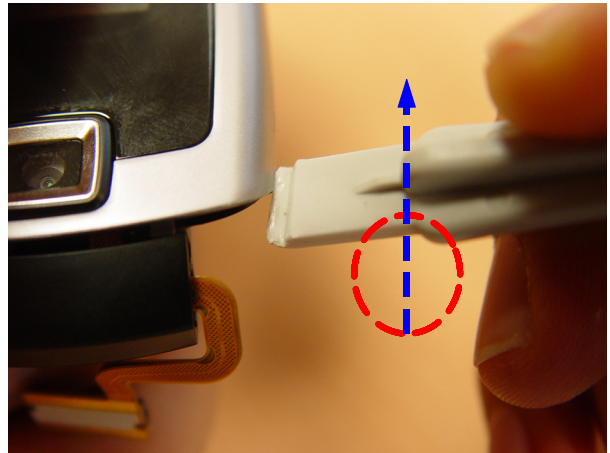
<p>1</p> 	<p>2</p> 
<p>1) Unscrew the REAR at the four points. 2) Disassemble the IF COVER 3) Disassemble the EAR COVER * caution 1) Be careful not to make scratch and molding damage!</p>	<p>1) Disassemble the Rear from the bottom side to the upper side. * caution 1) Be careful not to make scratch and molding damage!</p>
<p>3</p> 	<p>4</p> 
<p>1) Disassemble the LCD CONNECTOR 2) Disassemble the PBA from the FRONT ASS'Y 3) Remove the DUST TAPE 4) Disassemble the Keypad. * caution 1) When PBA is separated from LCD Connector, Be careful not to damage! 2) Be careful not to damage LCD FPCB!</p>	<p>1) Push the hinge between Folder Upper and lower, And Disassemble Front from Folder. * caution 1) Be careful not to make scratch and molding damage! 2) Be careful not to damage LCD FPCB!</p>

5



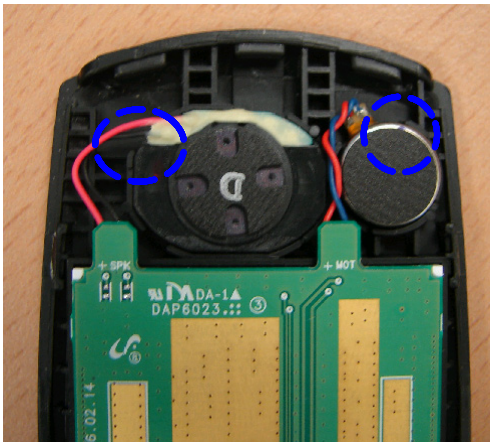
- 1) Remove screw caps.
 - 2) Unscrew the FOLDER Upper.
- * caution**
- 1) Be careful not to make scratch and molding damage!
 - 2) Be careful not to damage LCD FPCB!

6



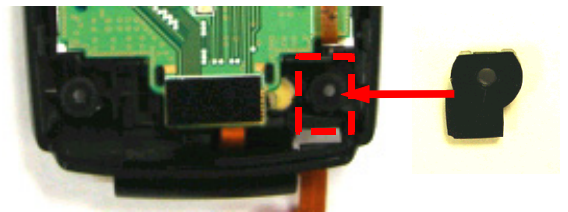
- 1) By using an assembly stick, Disassemble Folder Upper from Folder lower (Right and Left are the same process)
- * caution**
- 1) Be careful not to make scratch and molding damage!

7



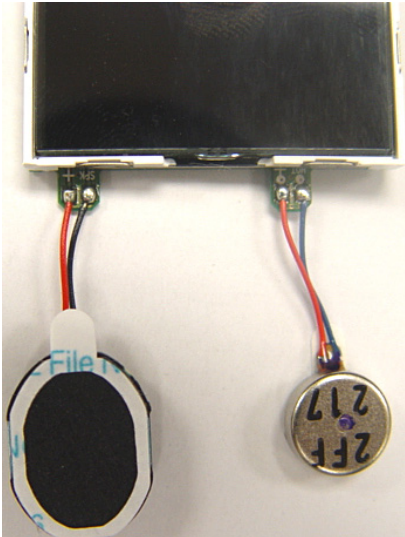
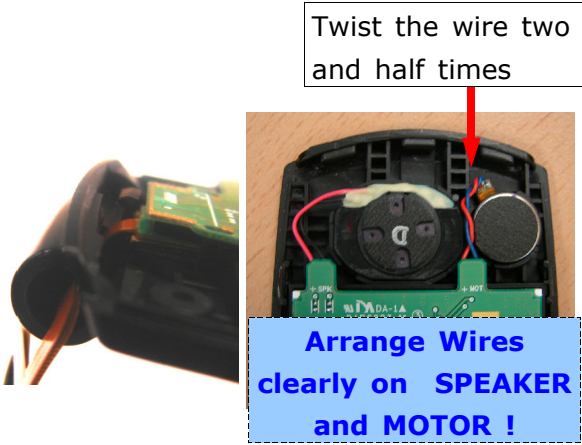
- 1) Disassemble the MOTOR and the SPEAKER from FOLDER LOWER by using a pincette.
- * caution**
- 1) Be careful not to make scratch and molding damage!
 - 2) Do not use the speaker bonding part at disassembling speaker (Only use marking point)

8



- 1) Disassemble FPCB HOLE COVER
- * caution**
- 1) Be careful not to damage the LCD FPCB.

6-2. Assembly

<p>1</p> 	<p>2</p>  <p>Twist the wire two and half times</p> <p>Arrange Wires clearly on SPEAKER and MOTOR !</p>
<p>1) Solder SPEAKER & MOTOR to LCD. 2) Bond on the soldering place * caution 1) Be careful not to make scratch and molding damage!</p>	<p>1) Insert FPCB into FOLDER LOWER. 2) Assemble "Con to Con" to LCD 3) Attach Speaker and Motor. * caution 1) Be careful not to make scratch and molding damage! 2) Be careful not to damage LCD FPCB!</p>
<p>3</p> 	<p>4</p>  <p><1> <3></p> <p><2></p>
<p>1)Attach LCD connector rubber. 2)Assemble FPCB hole cover. * caution 1. Arrange the motor wire after assembling the speaker. 2. First assemble the motor wire, next the speaker wire.</p>	<p>1) Assemble FOLDER UPPER with FOLDER LOWER following the orders as above picture is shown. * caution 1) Be careful not to make scratch and molding damage!</p>

5



1) Screw up the FOLDER UPPER at the above two points.(M1.4xL3.5)

1) Be careful not to make scratch and molding damage!

2) Torque 1.0 ± 0.1 Kgf.cm!

6



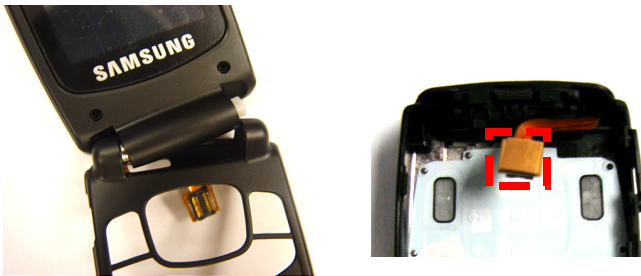
1) Attach Screw rubber caps on the screws by using a pincette.

*** caution**

1) Be careful not to make scratch and molding damage!

2) Be sure to push the rubbers.

7



1) Insert LCD FPCB[which is connected to FOLDER] into the bottom of FRONT Hinge.

2) The FOLDER's projection inserts the FRONT'S hole when Projection is pushed

3) Assemble FOLDER with FRONT

4) Attach Gasket tape.

*** caution**

1) Be careful not to make scratch and molding damage!

8



1) Attach FRONT Dust TAPE as a above picture is shown.

*** caution**

1) Be careful not to make scratch and molding damage!

9



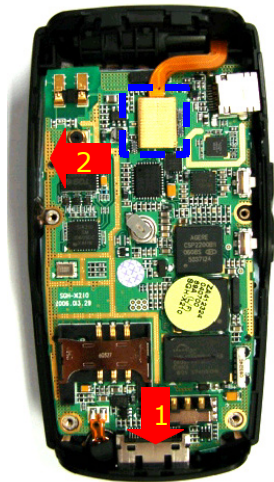
- 1) Insert the KEYPAD.
- * **caution**
- 1) Be careful not to insert keypad into FRONT incorrectly! [Put KEYPAD Holes into FRONT Projection correctly!]
- 2) Be careful not to damage LCD FPCB!

10



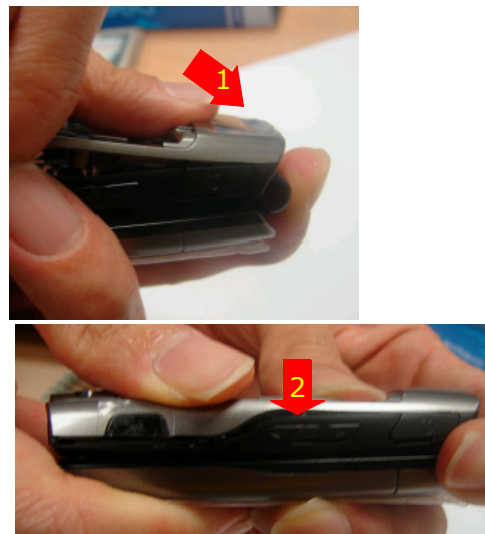
- 1) Insult the Side key as the above picture is shown.
- 2) Attach the Sponge.
- * **caution**
- 1) Be sure the direction of side key

11



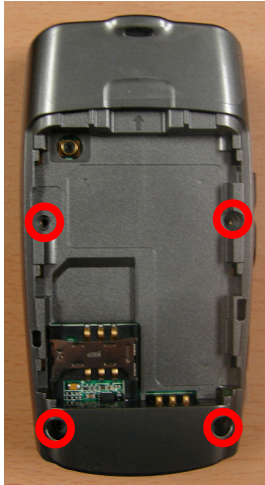
- 1) Insert PBA into FRONT.
- 2) Connect LCD FPCB to PBA CONNECTOR.
- * **caution**
- 1) Be careful not to damage LCD FPCB!
- 2) Be careful not to damage PBA

12



- 1) Assemble the rear from 1 direction to 2 direction as the above picture is shown.
- * **caution**
- 1) Be careful not to make scratch and molding damage!

13



1) Screw up the REAR at 4 Points.
[M1.4* L3]

*** caution**

- 1) Torque $0.8 \pm 0.1 \text{ Kgf/cm}^2$
- 2) Be careful not to make scratch and molding damage!