

SAMSUNG

GSM TELEPHONE

SGH-X200

SERVICE *Manual*

GSM TELEPHONE



CONTENTS

1. Specification
2. Flow Chart of Troubleshooting
3. Exploded Views and Parts List
4. Electrical Parts List
5. PCB Diagrams
6. Block Diagrams

1. SGH-X200 Specification

1-1. GSM General Specification

	GSM900 Phase 1	EGSM 900 Phase 2	DCS1800 Phase 1	PCS1900
Freq. Band[MHz] Uplink/Downlink	890~915 935~960	880~915 925~960	1710~1785 1805~1880	1850~1910 1930~1990
ARFCN range	1~124	0~124 & 975~1023	512~885	512~810
Tx/Rx spacing	45MHz	45MHz	95MHz	80MHz
Mod. Bit rate/ Bit Period	270.833kbps 3.692us	270.833kbps 3.692us	270.833kbps 3.692us	270.833kbps 3.692us
Time Slot Period/Frame Period	576.9us 4.615ms	576.9us 4.615ms	576.9us 4.615ms	576.9us 4.615ms
Modulation	0.3GMSK	0.3GMSK	0.3GMSK	0.3GMSK
MS Power	33dBm~13dBm	33dBm~5dBm	30dBm~0dBm	30dBm~0dBm
Power Class	5pcl ~ 15pcl	5pcl ~ 19pcl	0pcl ~ 15pcl	0pcl ~ 15pcl
Sensitivity	-102dBm	-102dBm	-100dBm	-100dBm
TDMA Mux	8	8	8	8
Cell Radius	35Km	35Km	2Km	-

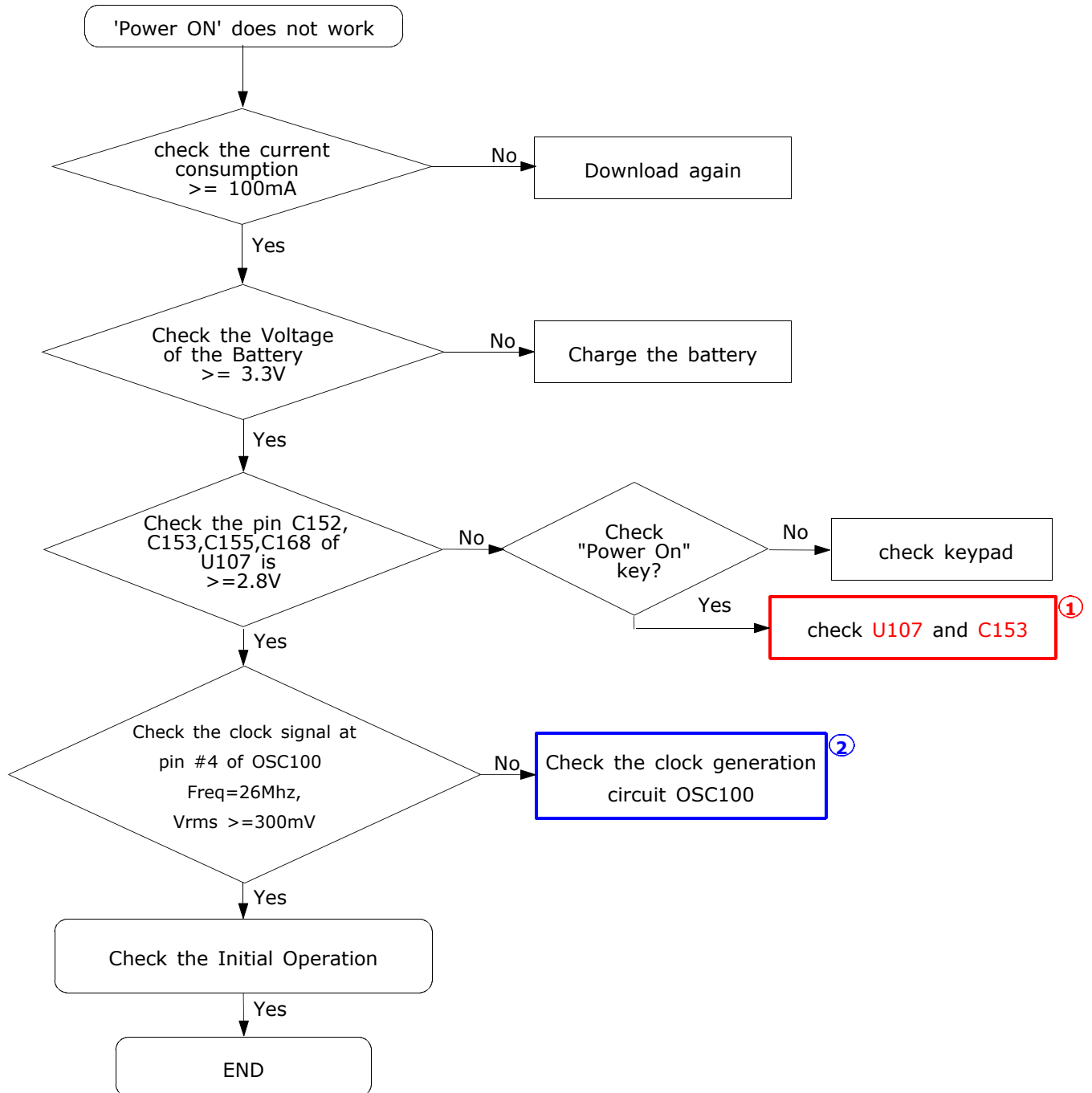
1-2. GSM Tx Power Class

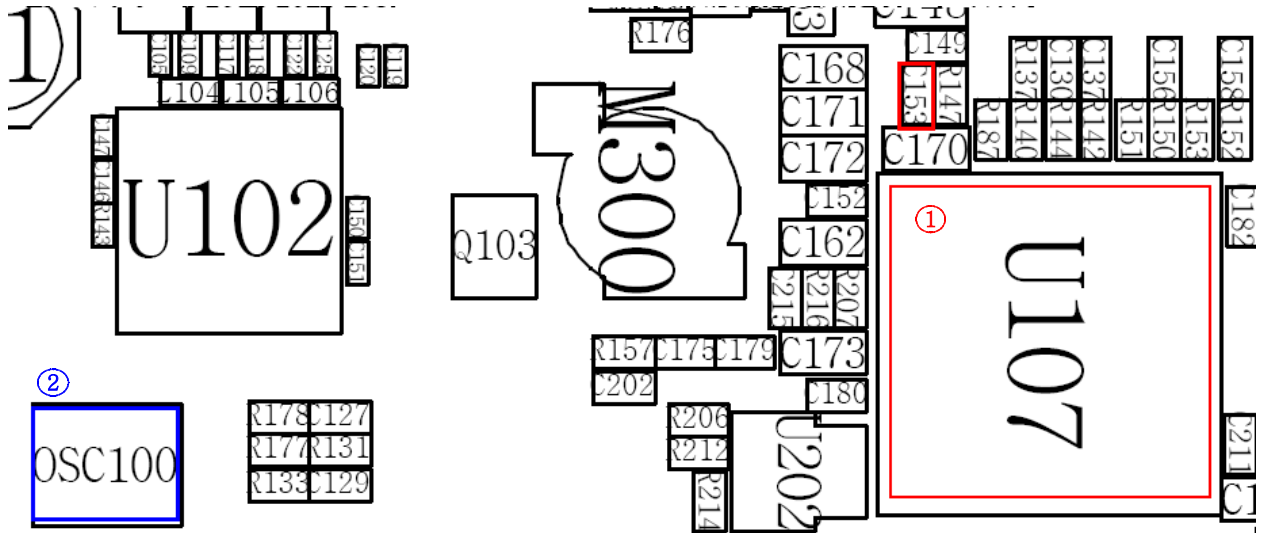
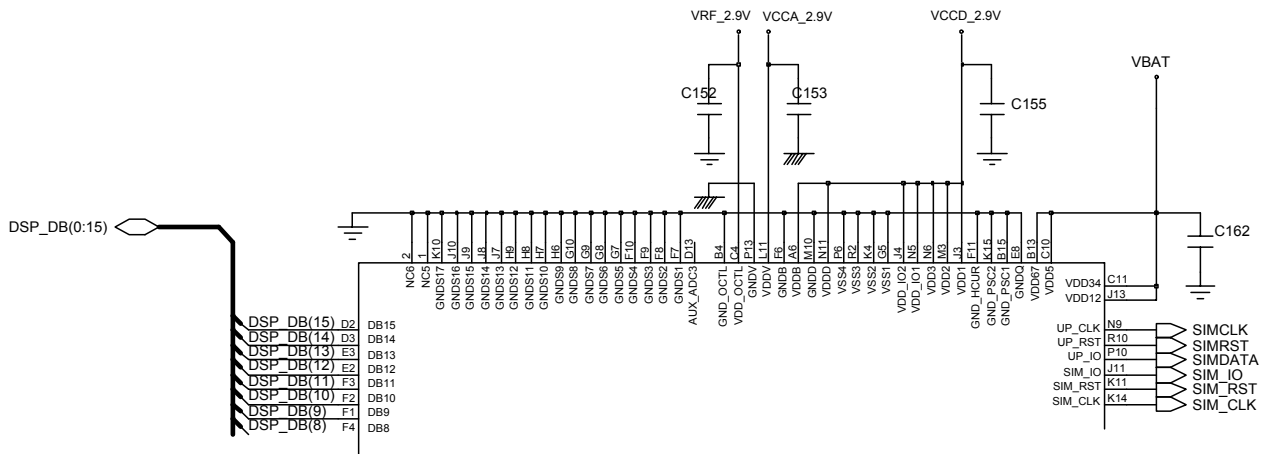
TX Power control level	GSM900	TX Power control level	DCS1800	TX Power control level	PCS1900
5	33±2 dBm	0	30±3 dBm	0	30±3 dBm
6	31±2 dBm	1	28±3 dBm	1	28±3 dBm
7	29±2 dBm	2	26±3 dBm	2	26±3 dBm
8	27±2 dBm	3	24±3 dBm	3	24±3 dBm
9	25±2 dBm	4	22±3 dBm	4	22±3 dBm
10	23±2 dBm	5	20±3 dBm	5	20±3 dBm
11	21±2 dBm	6	18±3 dBm	6	18±3 dBm
12	19±2 dBm	7	16±3 dBm	7	16±3 dBm
13	17±2 dBm	8	14±3 dBm	8	14±3 dBm
14	15±2 dBm	9	12±4 dBm	9	12±4 dBm
15	13±2 dBm	10	10±4 dBm	10	10±4 dBm
16	11±3 dBm	11	8±4dBm	11	8±4dBm
17	9±3dBm	12	6±4 dBm	12	6±4 dBm
18	7±3 dBm	13	4±4 dBm	13	4±4 dBm
19	5±3 dBm	14	2±5 dBm	14	2±5 dBm
		15	0±5 dBm	15	0±5 dBm

2. SGH-X200 Flow Chart of Troubleshooting

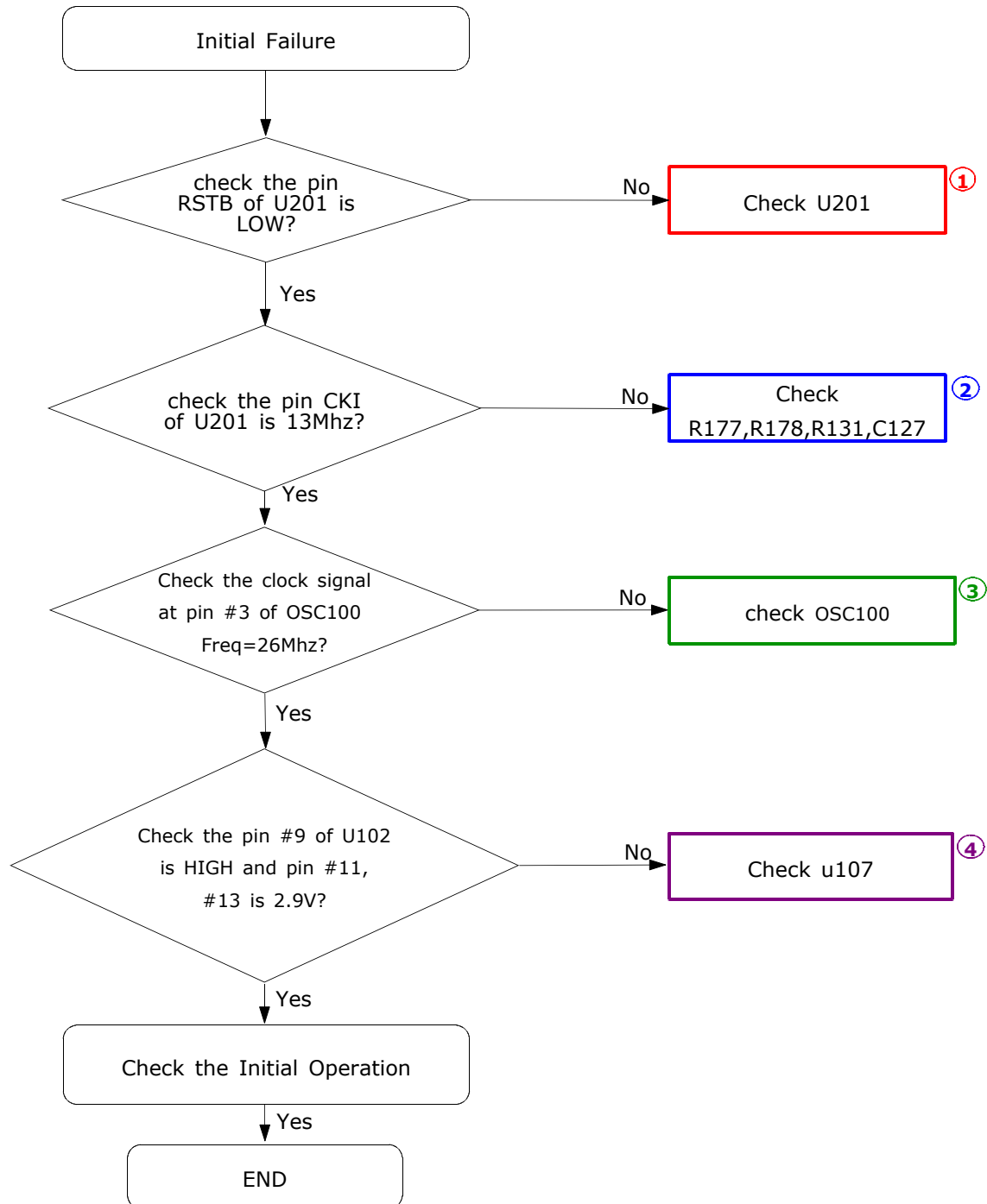
2-1. Baseband

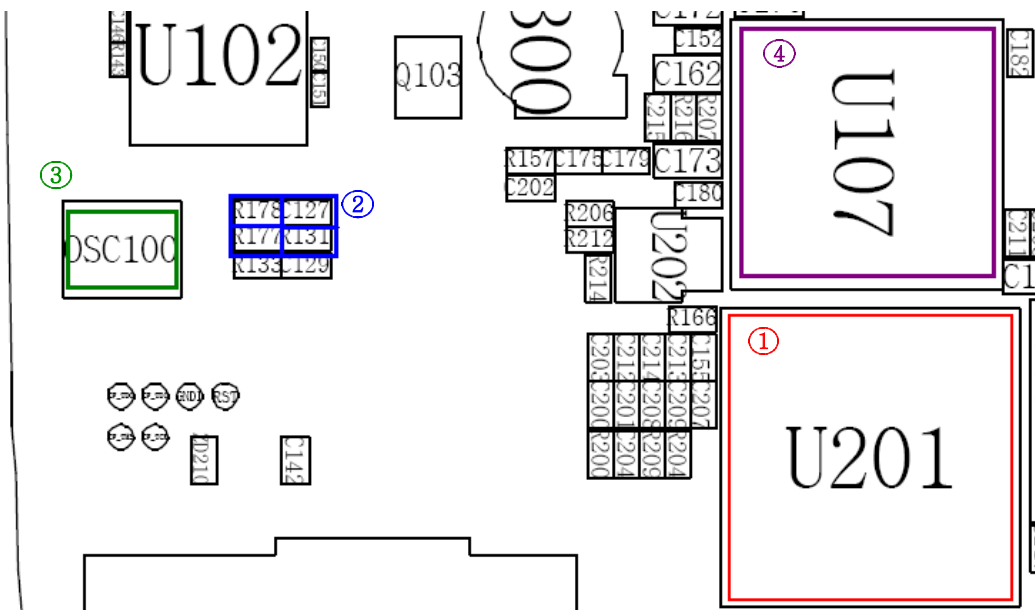
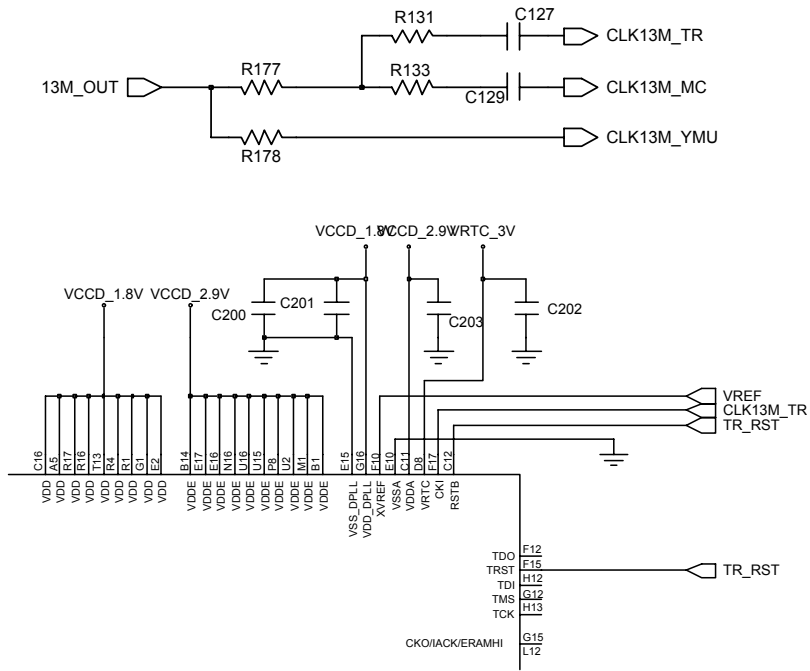
2-1-1. Power ON



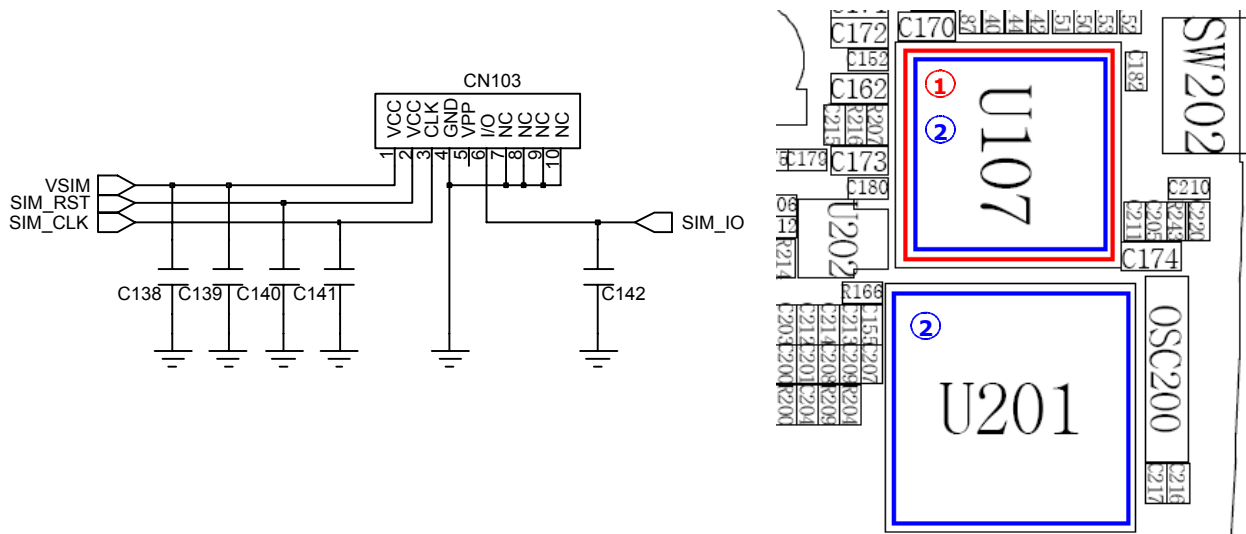
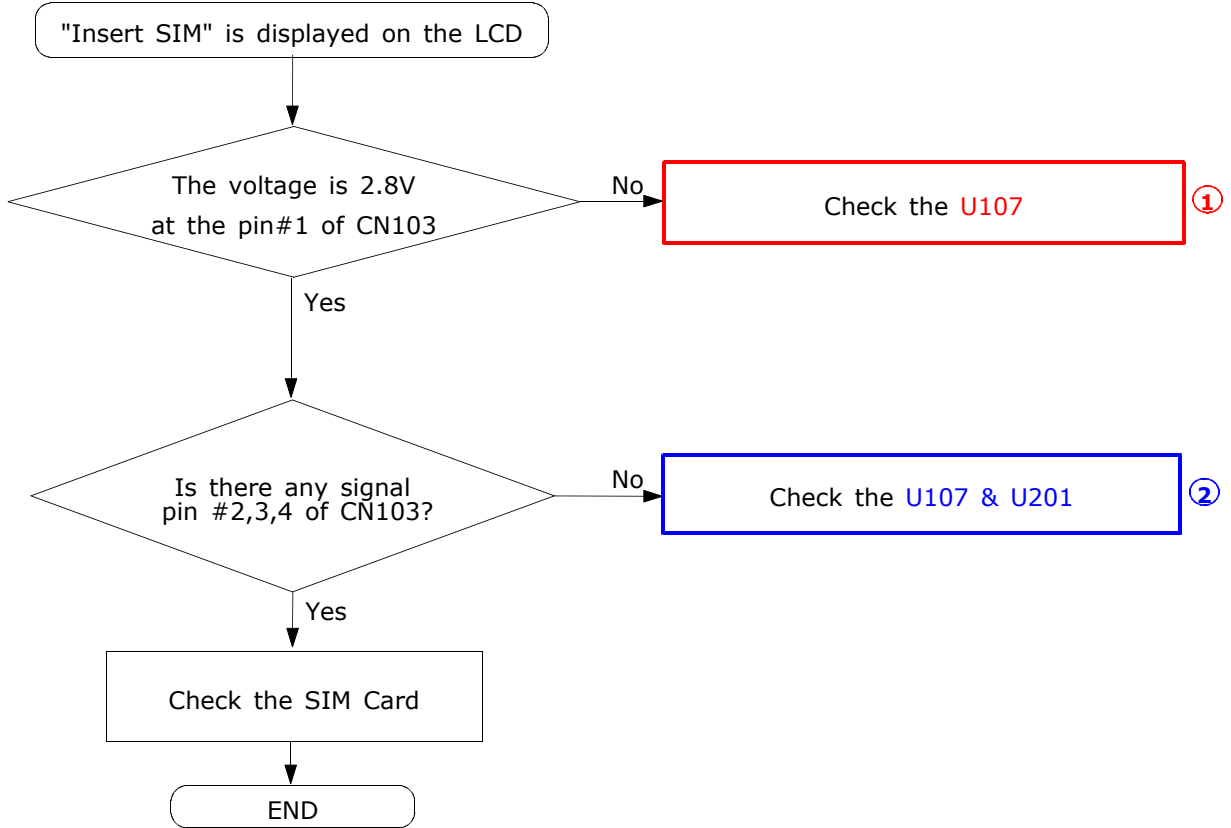


2-1-2. Initial



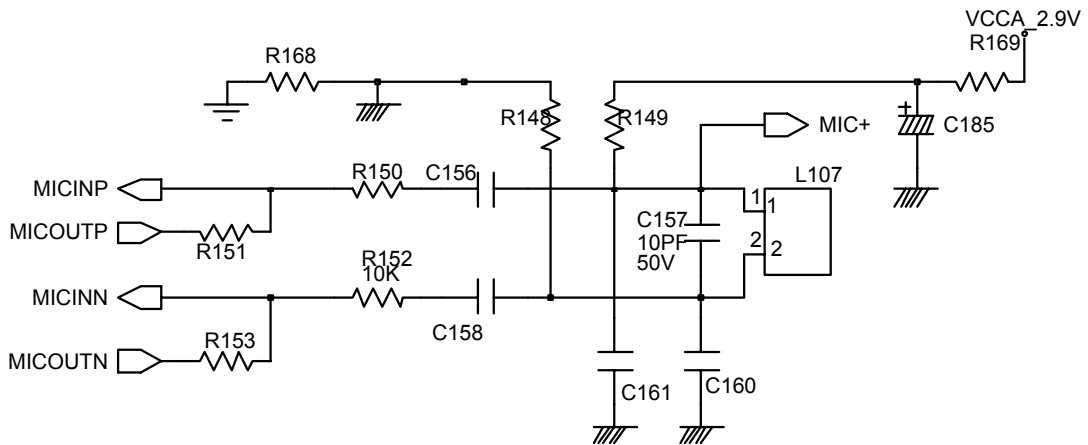
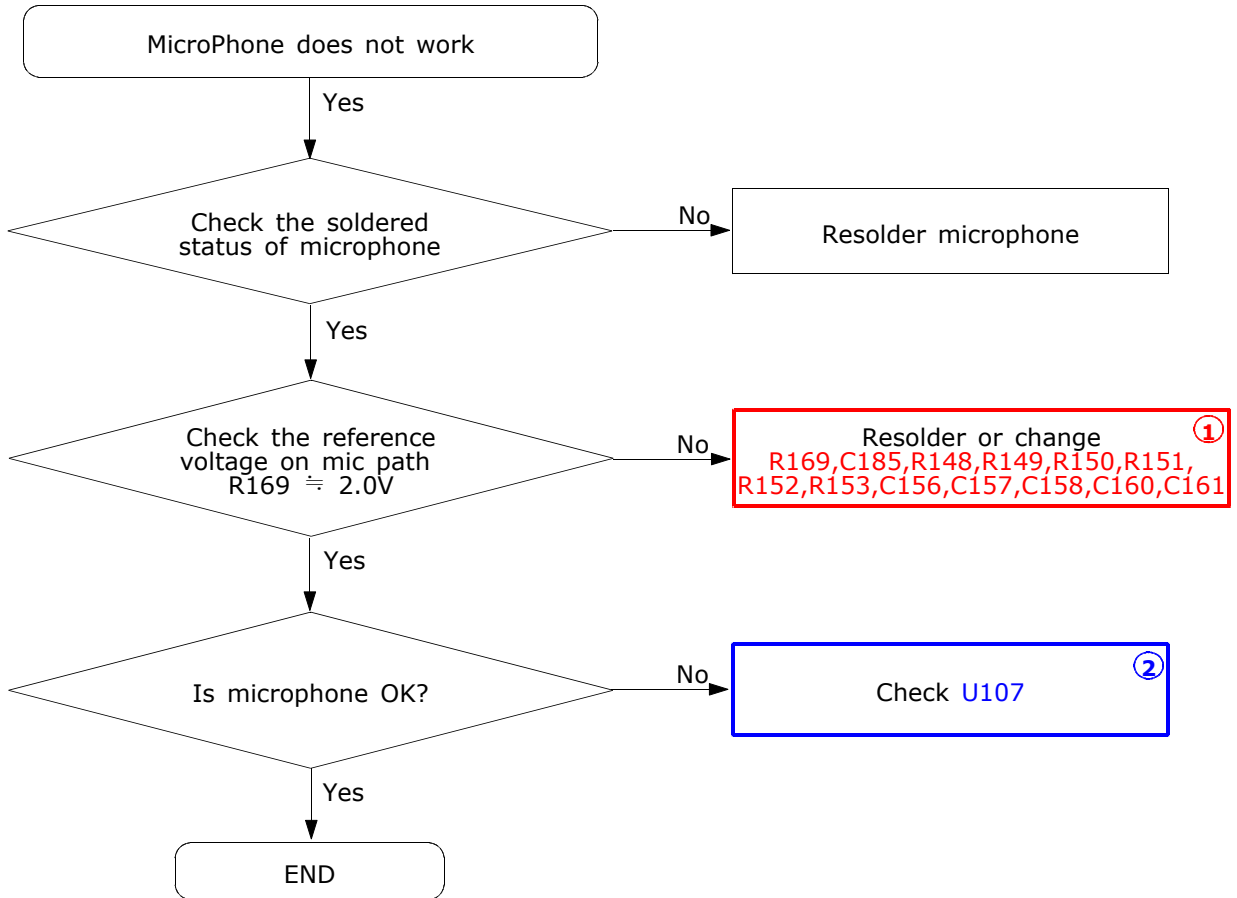


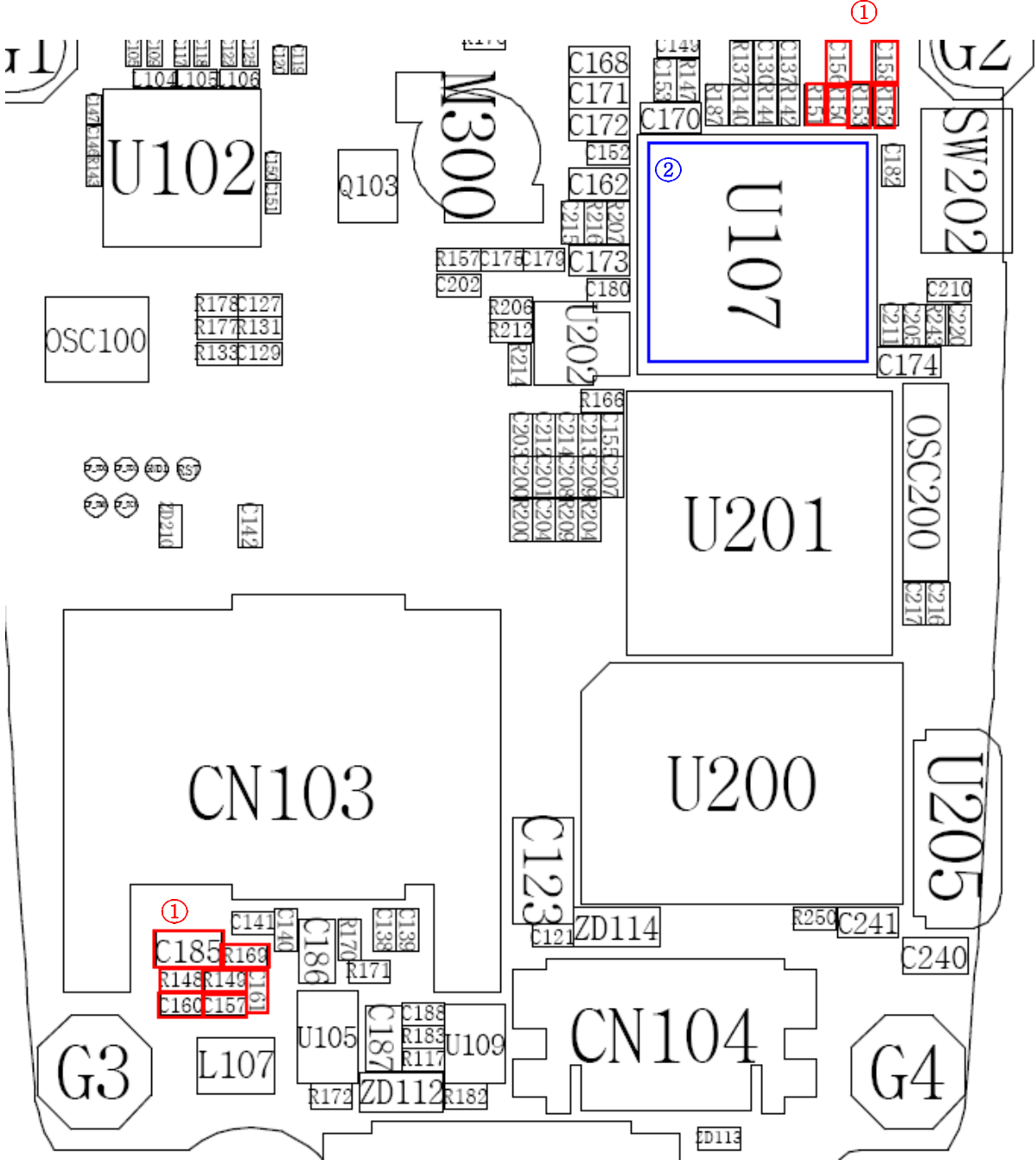
2-1-3. Sim Part



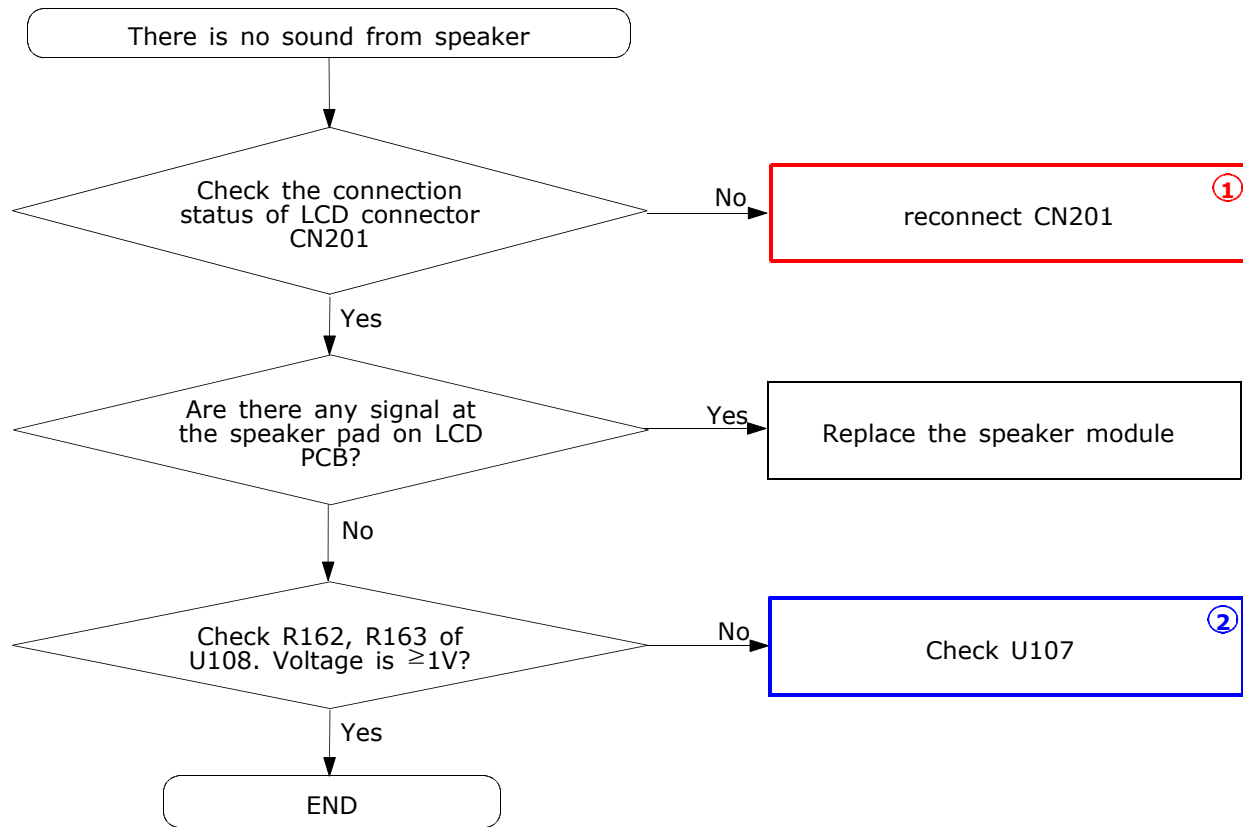
2-1-4. Microphone Part

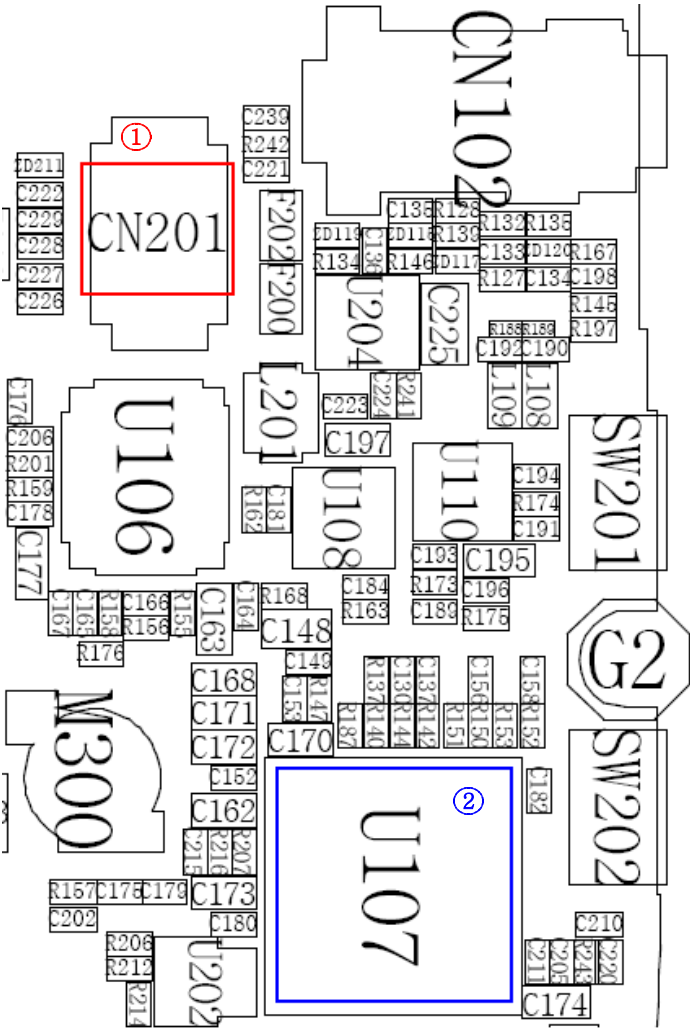
* Call with Sim before testing.



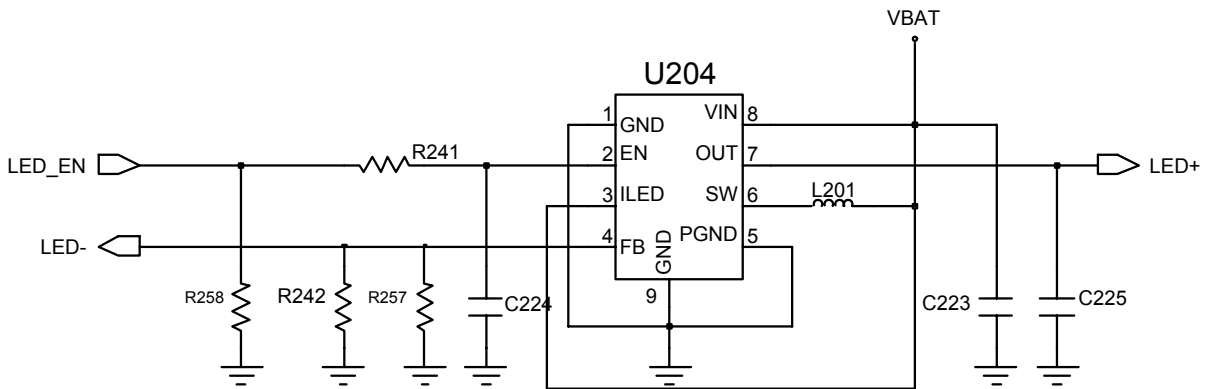
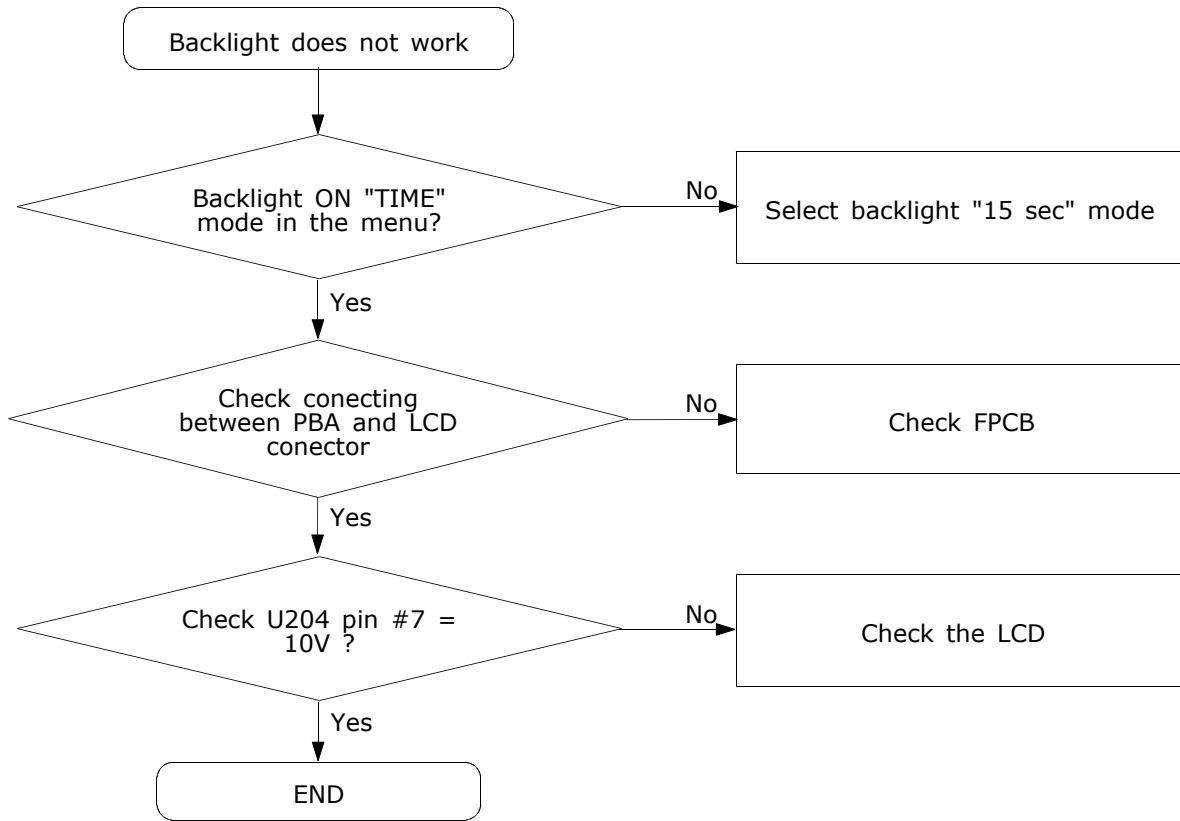


2-1-5. Speaker Part



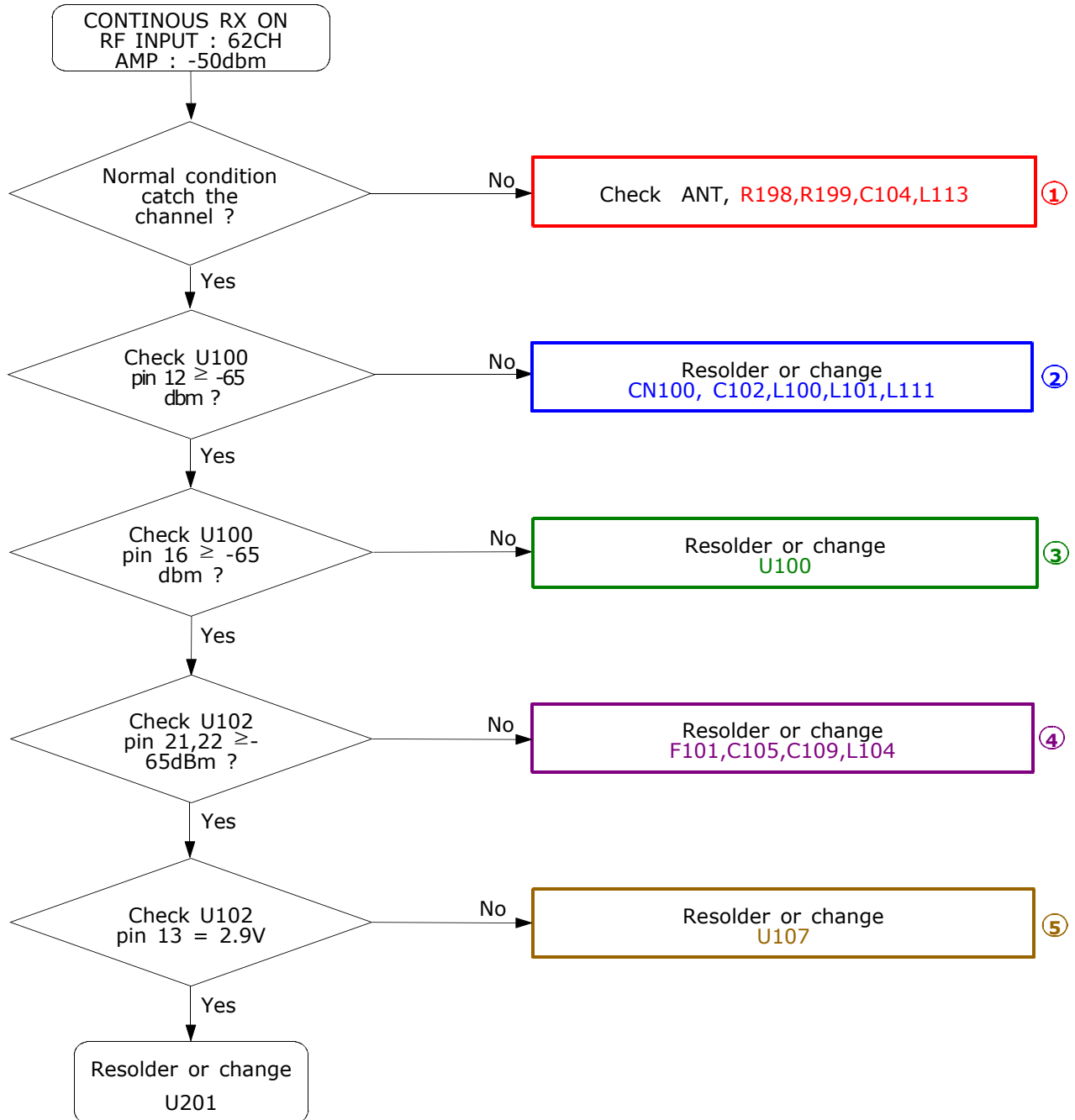


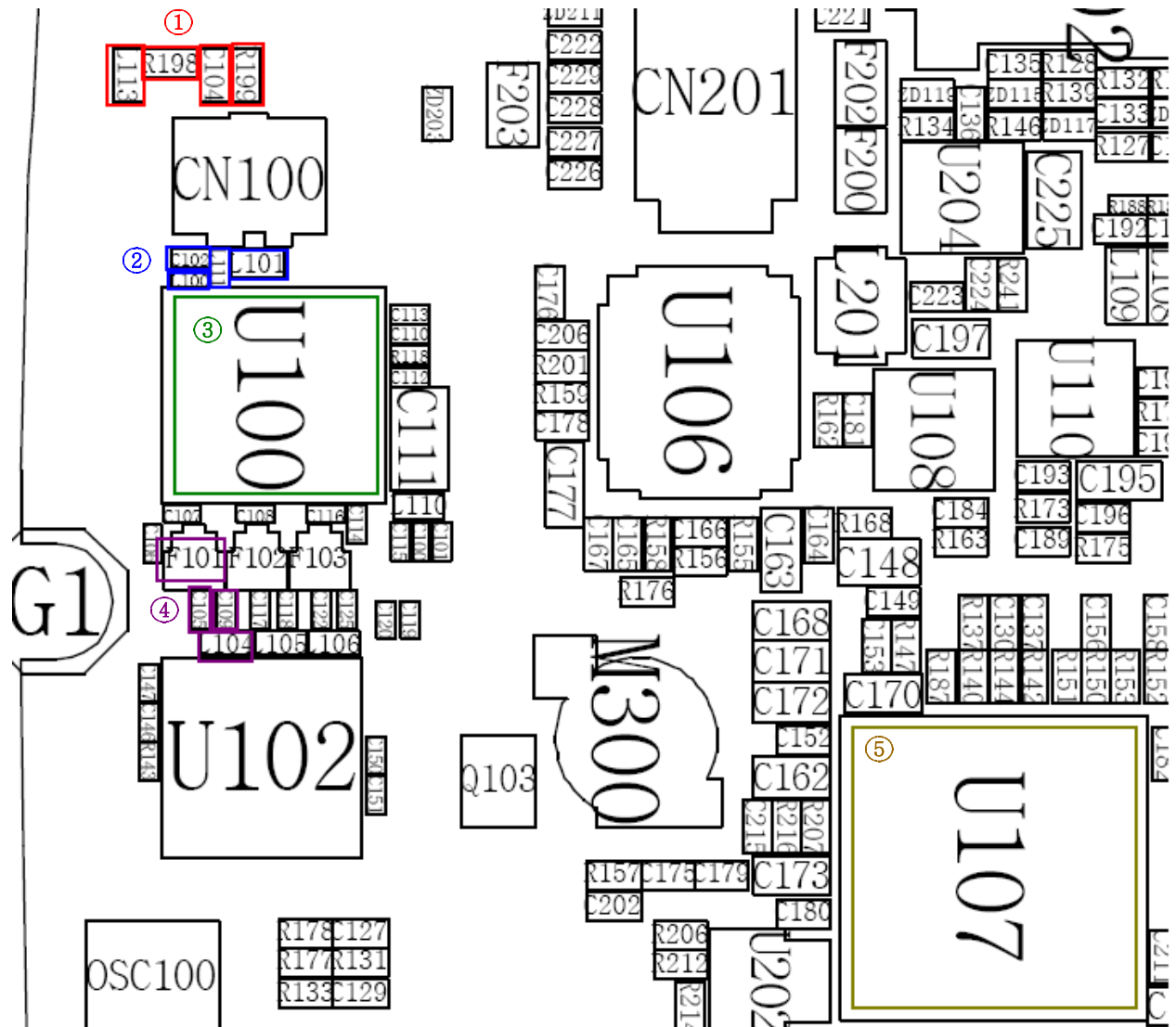
2-1-6. LCD backlight



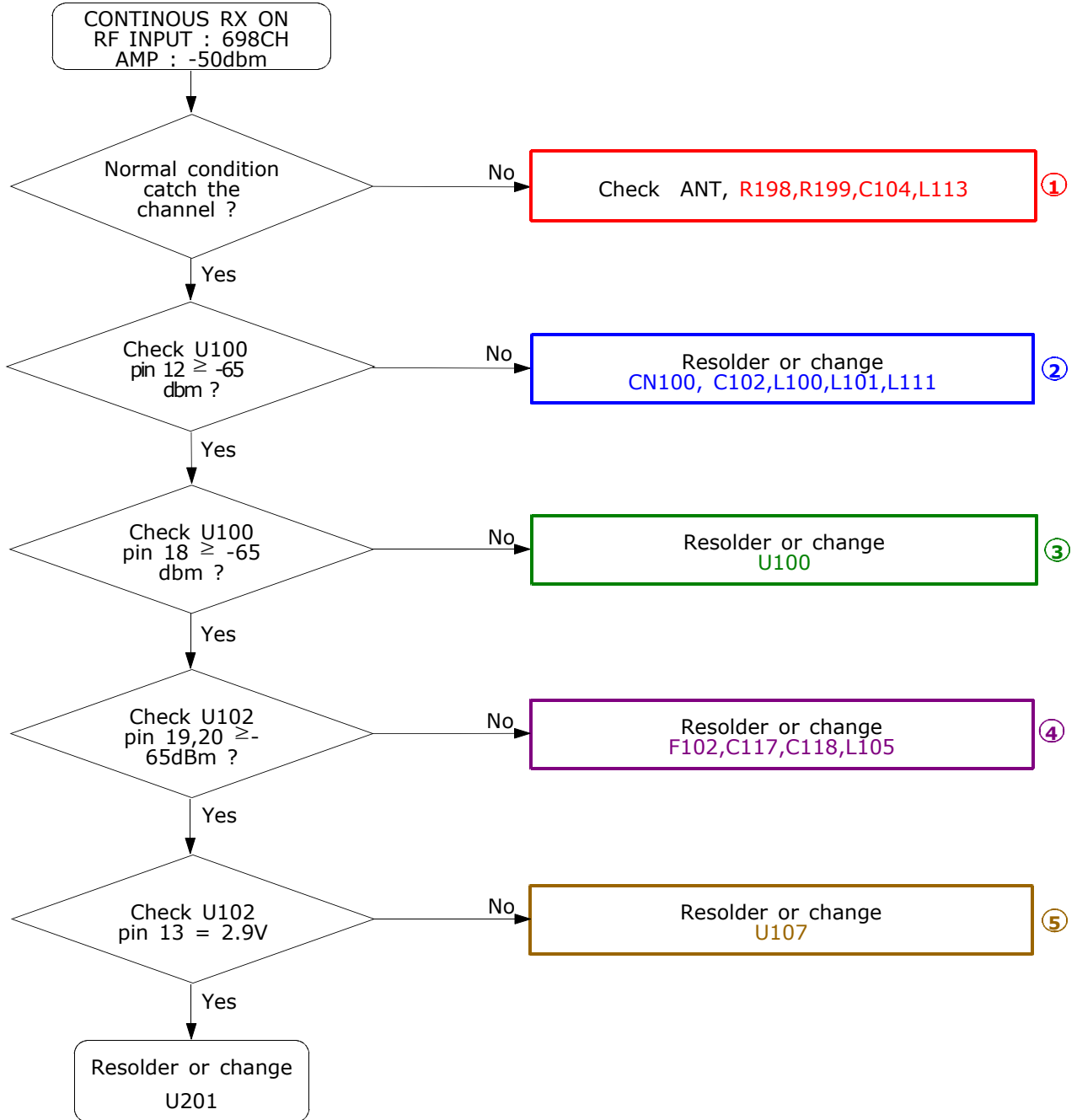
2-2. RF

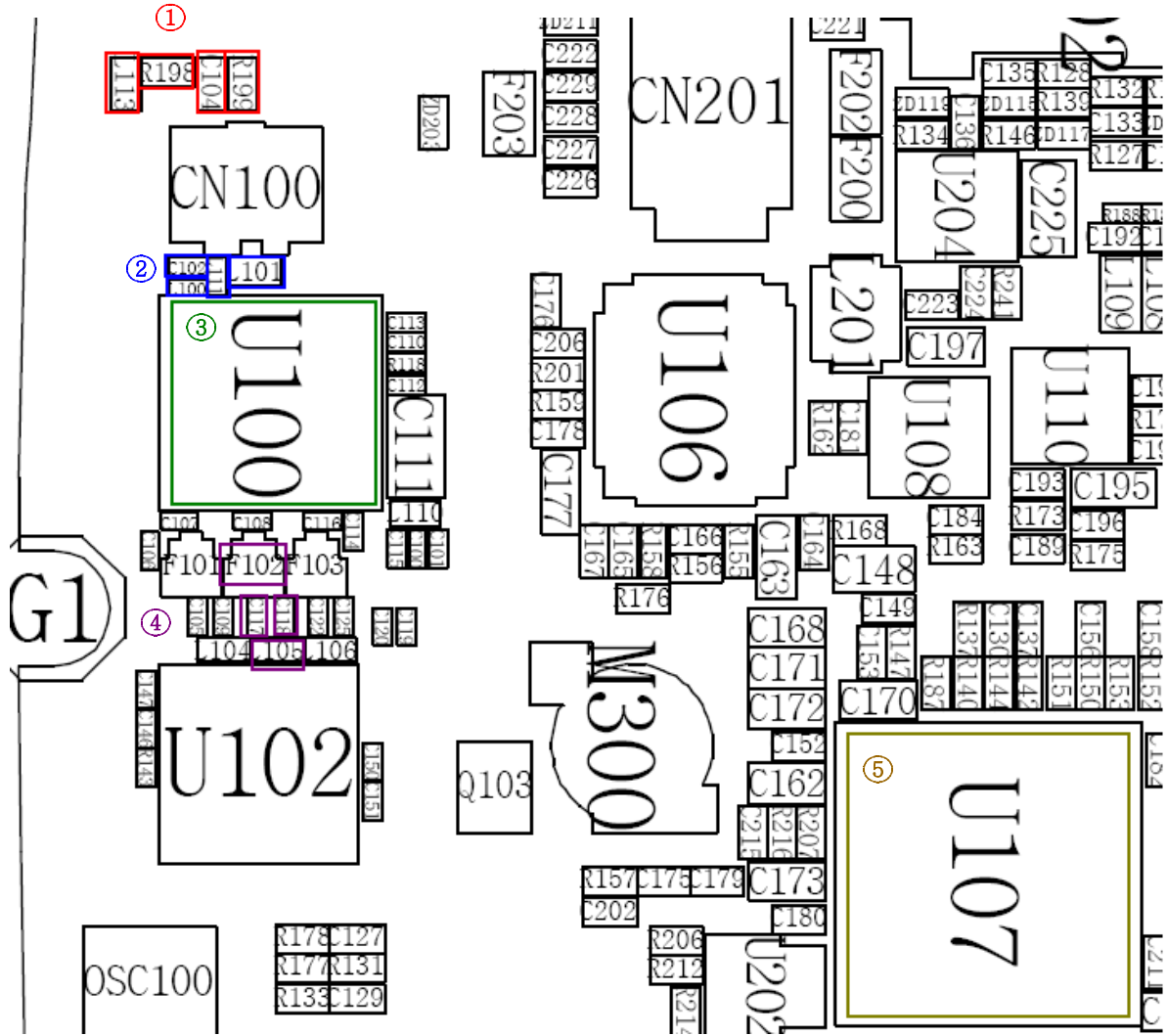
2-2-1. GSM Rx



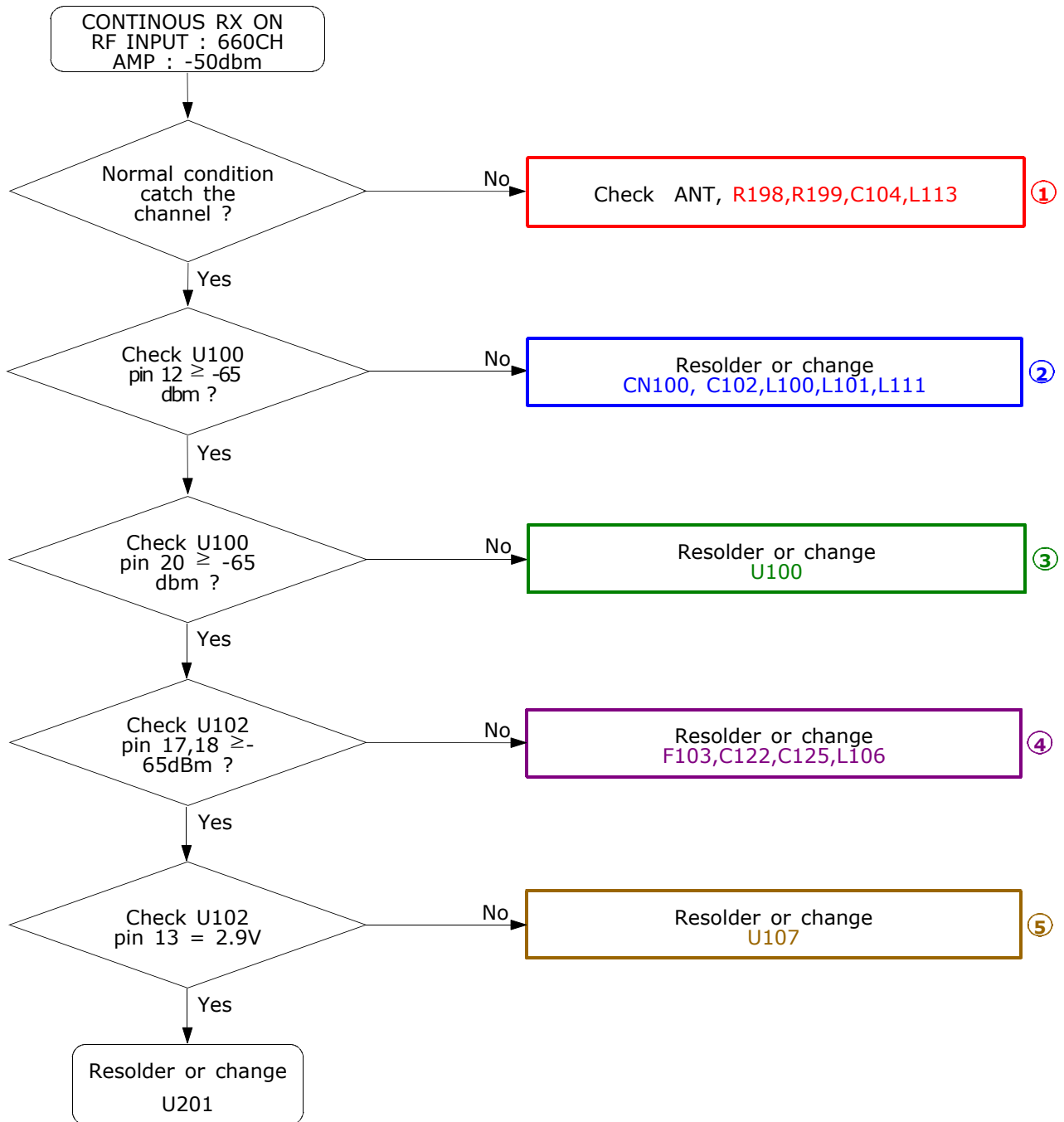


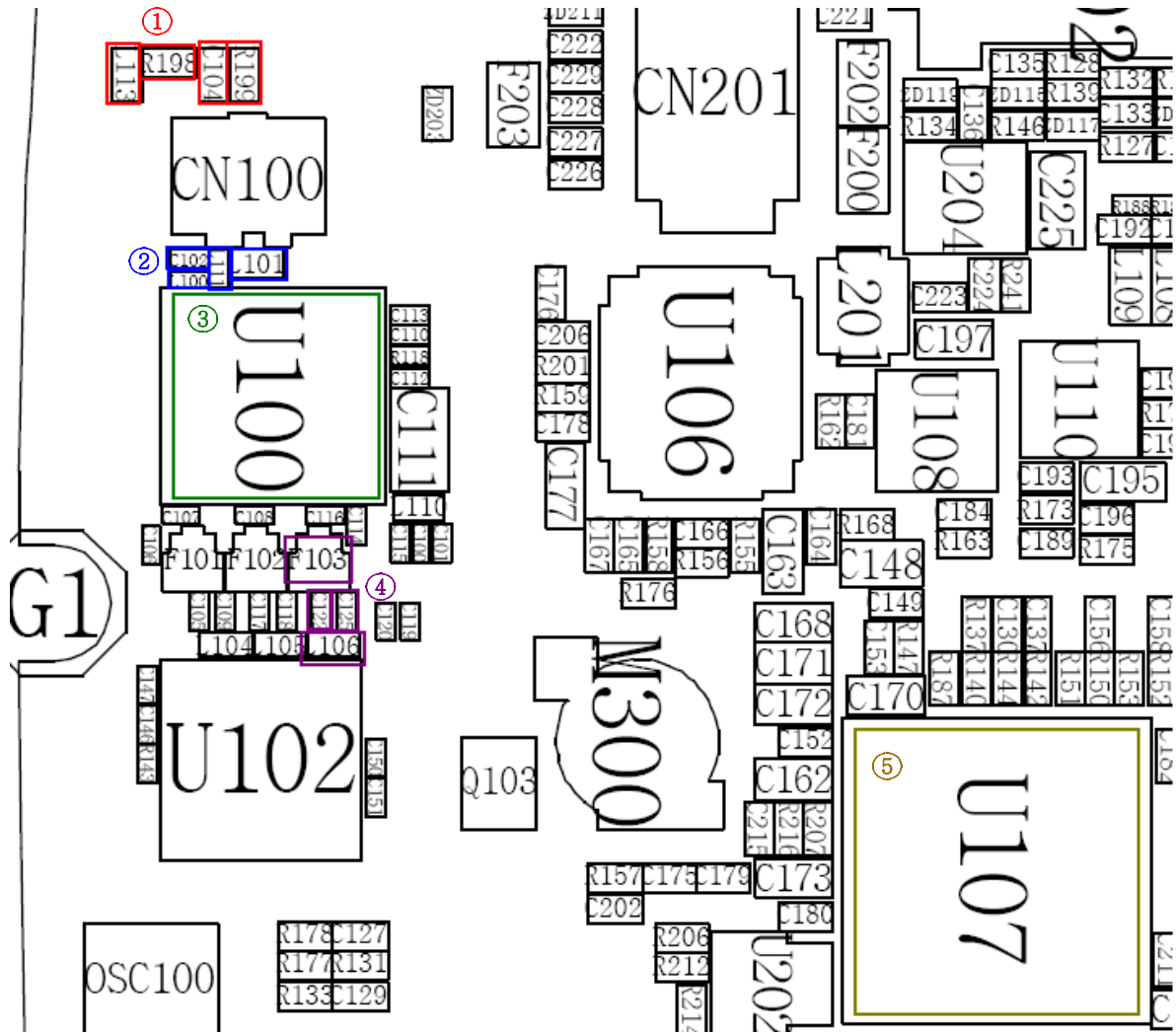
2-2-2. DCS Rx

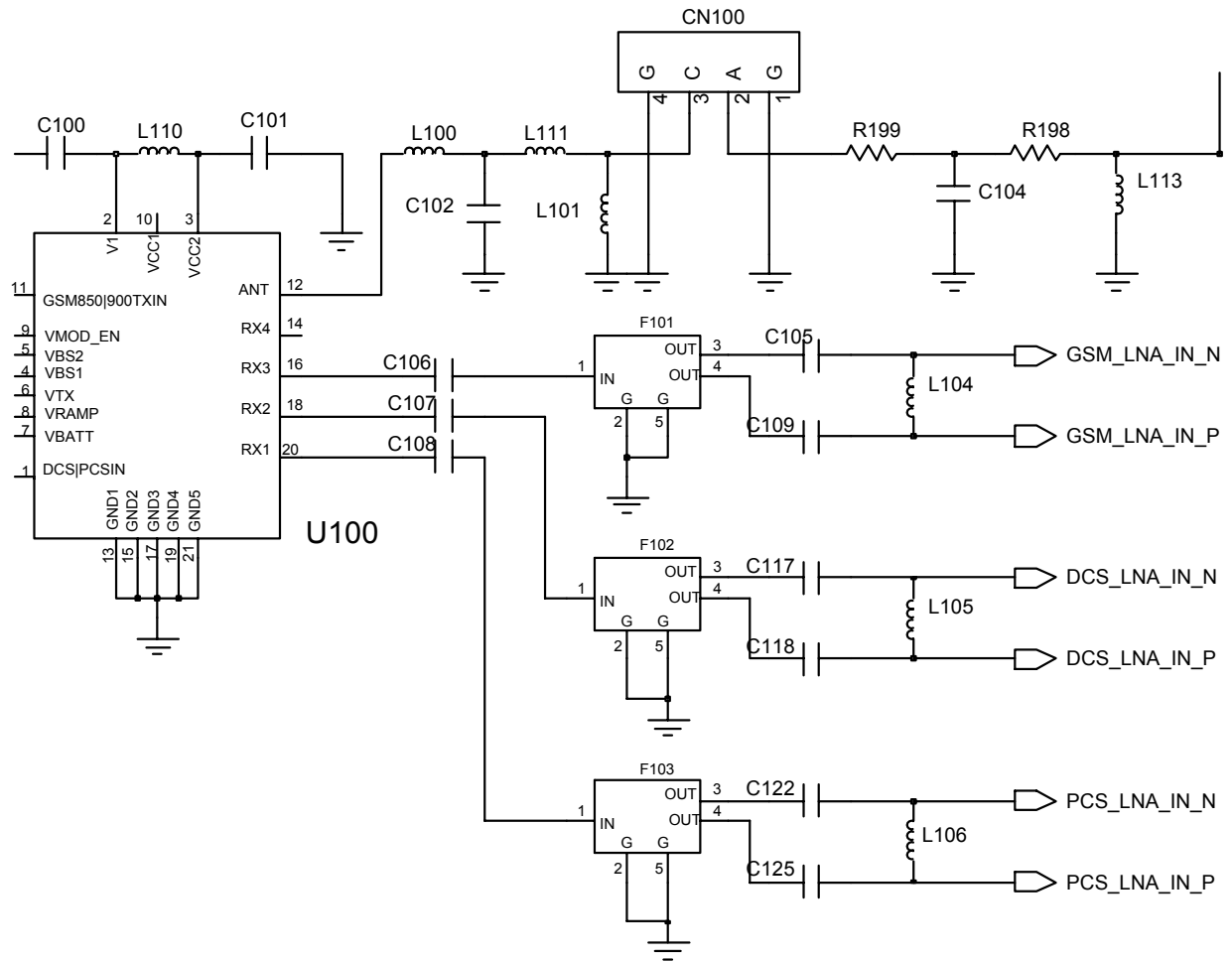




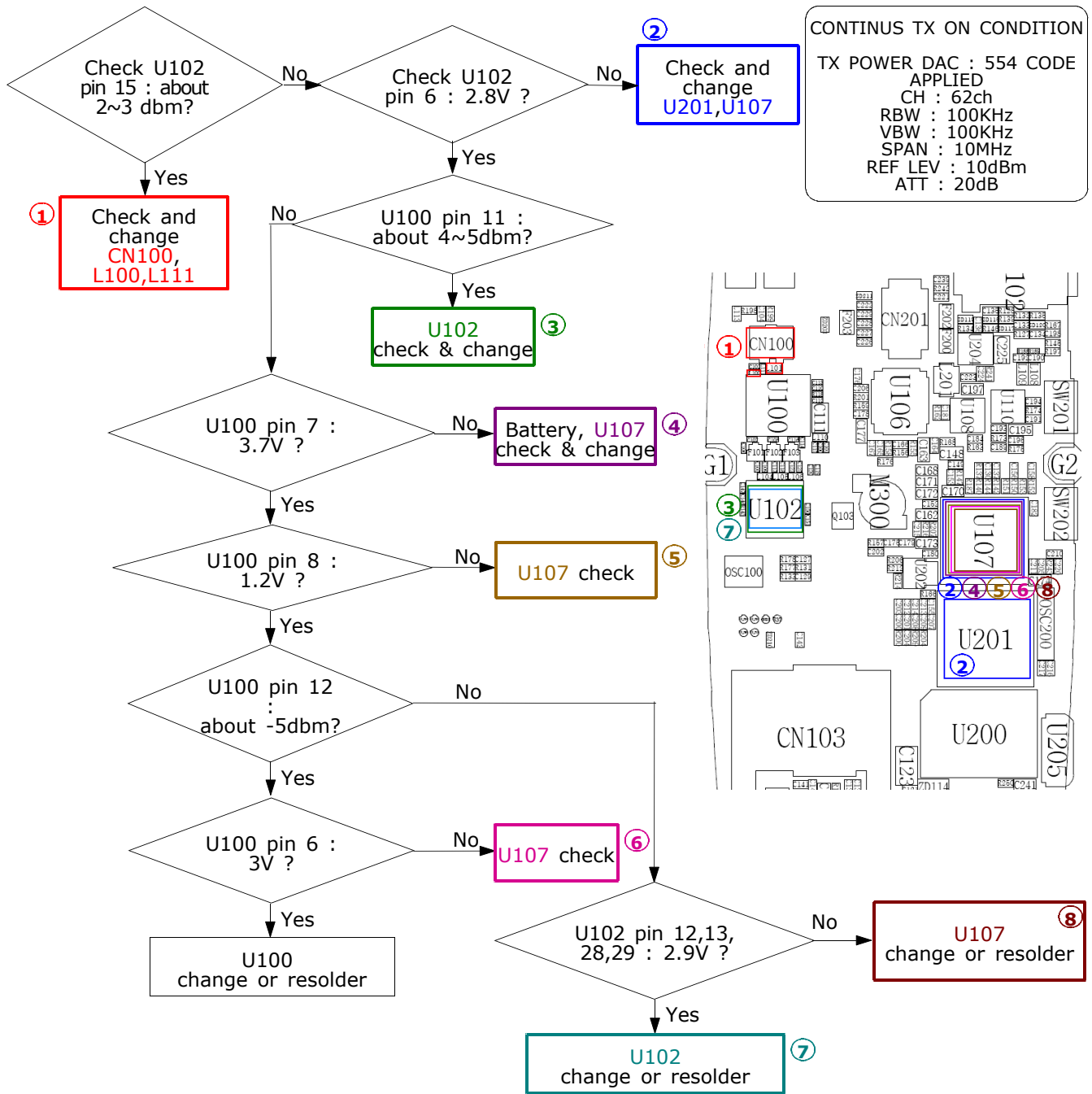
2-2-3. PCS Rx



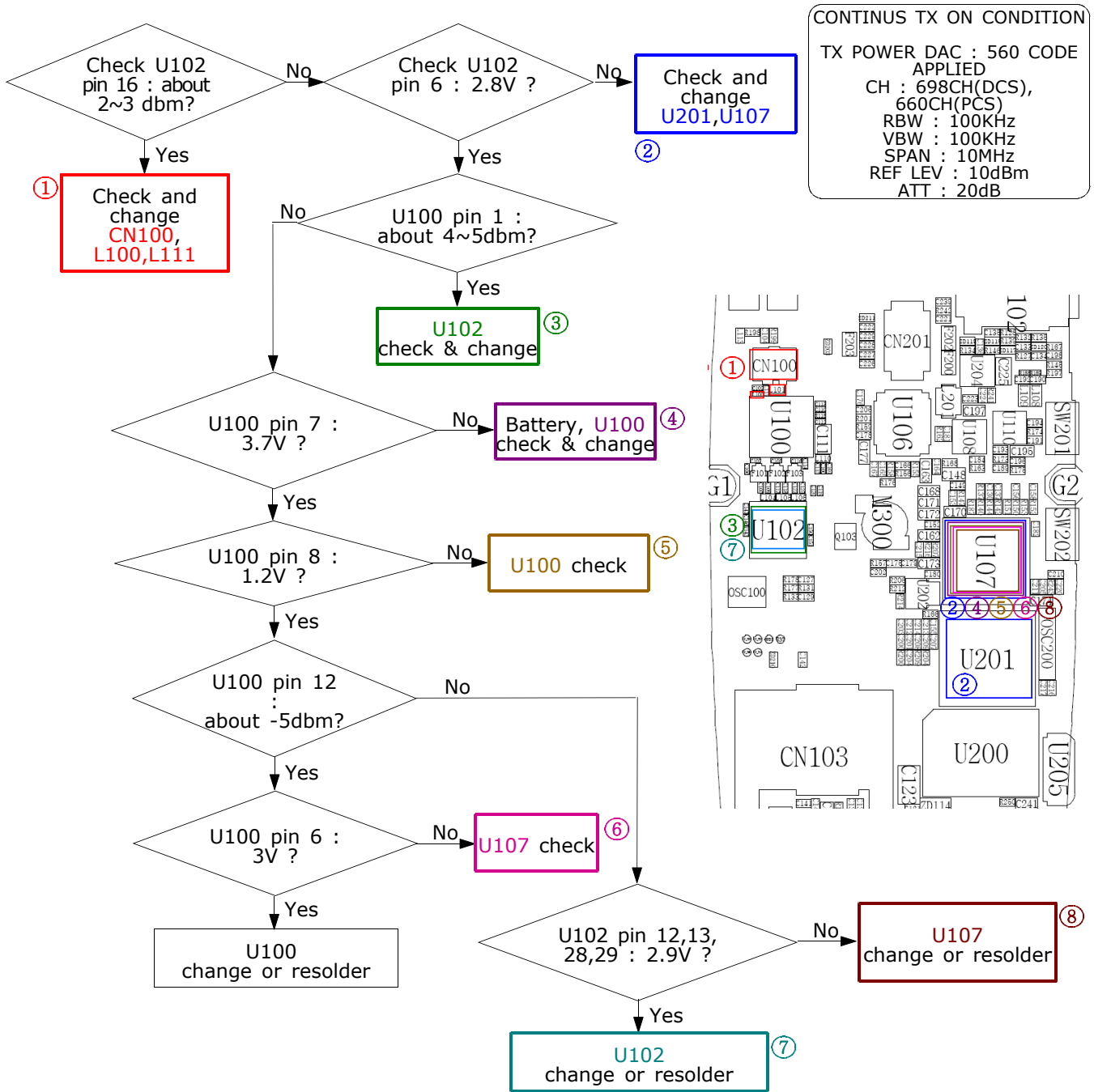




2-2-4. GSM Tx

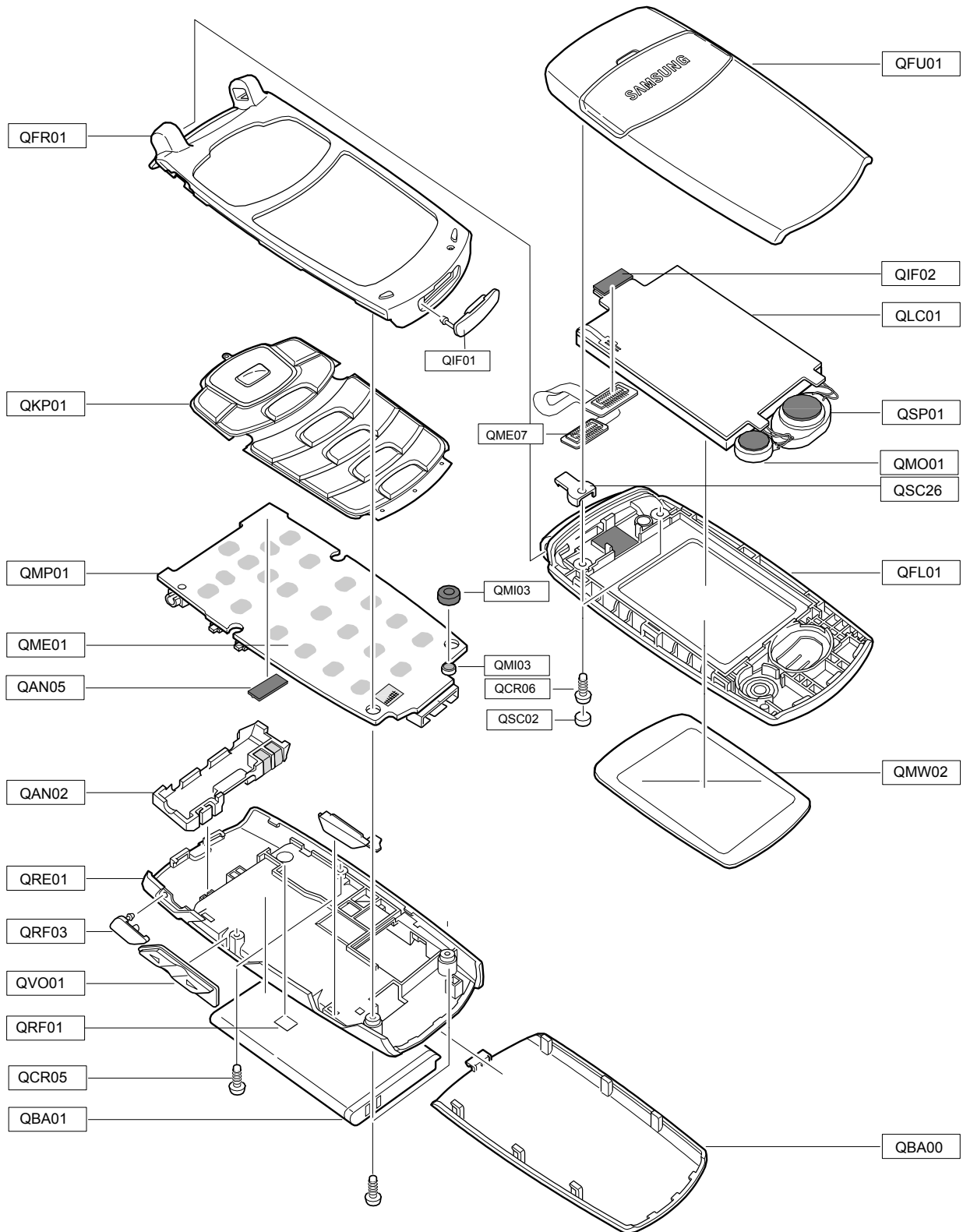


2-2-5. DCS/PCS Tx



3. SGH-X200 Exploded View and Parts List

3-1. Cellular phone Exploded View



3-2. Cellular phone Parts list

Location No	Description	Sec Code
QAN05	MEC-ANTENNA CONN RUBBER;SGH-D600,EU,	GH75-08200A
QBA00	PMO-BATTERY COVER;SGH-X200,PC,SIL,-,	GH72-24574A
QBA01	BATTERY-800MAH,BLK,ENG,M;BST3108BE,S	GH43-01850A
QCR05	SCREW-MACHINE;PH,+,M1.4,L3,ZPC(BLK),	6001-001478
QCR06	SCREW-MACHINE;PH(PI2.5),+,M1.4,L3.5,	6001-001155
QFL01	MEC-FOLDER LOWER;SGH-X200,OPEN,EU,-,	GH75-07948A
QFU01	MEC-FOLDER UPPER;SGH-X200,OPEN,EU,-,	GH75-07947A
QIF02	RMO-CON RUBBER TOP;SGH-X200,CR RUBBE	GH73-05469A
QKP01	MEC-KEYPAD;SGH-X200,OPEN,EU,-,-,-,-,	GH75-07951A
QLC01	LCD-SGHX200 MODULE;UG-12R194-A,SGH-X	GH07-00777A
QME01	UNIT-METAL DOME;SGH-X200,9KW9612-010	GH59-02438A
QME07	UNIT-CON TO CON ASSY;SGH-X200,132-46	GH59-02437A
QMI01	MICROPHONE-ASSY-6.25MM;2,130~500uA,-	GH30-00177F
QMI03	RMO-MIC HOLDER;SGH-X200,NBR,-,-,-,BL	GH73-05342A
QMO01	MOTOR DC-SGHZ130;DMJBRK20NC,SGH-Z130	GH31-00154A
QMP01	PBA MAIN-SGHX200;SGH-X200,XET,EU,PBA	GH92-02348A
QMW02	PMO-MAIN WINDOW;SGH-X200,ACRYL,TRP,-	GH72-24569A
QRF01	MPR-RF SHEET;SGH-X200,PC SHEET,7.4X5	GH74-17894A
QSC02	RMO-FOLDER SCREW COVER;SGH-X200,NBR,	GH73-05511A
QSC26	PMO-FPCB HOLE COVER;SGH-X200,PC,BLK,	GH72-24570A
QSP01	SPEAKER;0.7W,8ohm,89dB+-2dB,800Hz,17	3001-001830
QAN02	ANTENNA-SGHX200;SGH-X200 인테나,SGH-	GH42-00653A
QVO01	MEC-VOLUME KEY;SGH-X200,OPEN,EU,-,-,	GH75-07952A
QRE01	MEC-REAR COVER;SGH-X200,OPEN,EU,-,-,	GH75-07950A
	QRF03 PMO-ERA COVER;SGH-X200,PC+URETHAN,SI	GH72-24572A
QFR01	MEC-FRONT COVER;SGH-X200,OPEN,EU,-,-	GH75-07949A
	QIF01 PMO-IF COVER;SGH-X200,PC+URETHAN,BLK	GH72-24566A

Description	Sec Code
BAG PE;LDPE,T0.05,W80,L180,TRP,-,-	6902-000634
ADAPTOR-SGHD500 BLK;TAD137EBE,SGH-D5	GH44-00954A
LABEL(P)-WATER SOAK;COMM,NORGE,100G,	GH68-02026A
MANUAL-WEEE CARD;COMM,SEC,ENGLISH,UN	GH68-07013A
MANUAL-USER;SGH-X200,XEG,GERMAN,GERM	GH68-08002A
LABEL(R)-MAIN (EU);SGH-X200,EU,MAT,T	GH68-08048A
BOX(P)-UNIT MAIN;SGH-X200,SC300+F(KO	GH69-03243A
CUSHION-CASE TA2 MA2;SGH-X200,PULP,T	GH69-03244A
NPR-ANTENNA CONTACT;- ,SGH-D500,BE,1.	GH71-04302A
RMO-BGA RUBBER T;SGH-X200,CR RUBBER,	GH73-05471A
RMO-BGA RUBBER M;SGH-X200,CR RUBBER,	GH73-05472A
RMO-BGA RUBBER B;SGH-X200,CR RUBBER,	GH73-05473A
RMO-YAMAHA RUUBBER;SGH-X200,CR RUBBE	GH73-05641A
MPR-MAIN LCD BOHO VINYL(S);SGH-S500,	GH74-05008A
MPR-TAPE BOHO MAIN WIN A;SCH-X850,3M	GH74-06456A
MPR-SPEAKER SPONGE;SGH-C225,SUPER PO	GH74-10948A
MPR-BOHO VINYL IF;SGH-E720,#950,85X1	GH74-13606A
MPR-VOLUME KEY PORON;SGH-X200,SRS PO	GH74-17891A
MPR-MAIN CON GASKET;SGH-X200,GOLD GA	GH74-17892A
MPR-TAPE FRONT HOLE;SGH-X200,LS-025,	GH74-17893A
MPR-TAPE DOME SHEET;SGH-X200,DTF-100	GH74-17895A
MPR-TAPE J TAG MK;SGH-X200,3M 851,5X	GH74-17897A
MPR-BOHO VINYL UPPER;SGH-X200,ST-555	GH74-18028A
MPR-FPCB PORON;SGH-X200,SRS,2X7X1.0T	GH74-18593A

3-3. Test Jig (GH80-03307A)



3-3-1. RF Test Cable
(GH39-00283A)



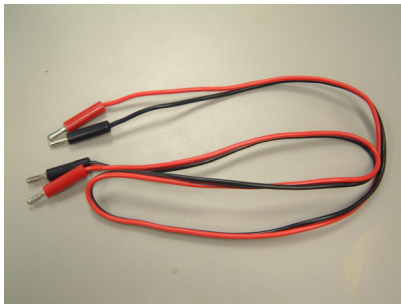
3-3-2. DATA CABLE
(GH39-00127A)



3-3-3. Serial Cable



3-3-4. Power Supply Cable



3-3-5. Test Cable
(GH39-00159A)



3-3-6. TA
(GH44-00954A)



4. SGH-X200 MAIN Electrical Parts List

SEC Code	Design LOC	Description	Status
0403-001411	ZD114	DIODE-ZENER	SA
0403-001427	ZD112	DIODE-ZENER	SA
0501-000225	Q104	TR-SMALL SIGNAL	SA
0504-000168	Q103	TR-DIGITAL	SA
0601-001819	LED200	LED	SA
0601-001819	LED201	LED	SA
0601-001819	LED202	LED	SA
0601-001819	LED204	LED	SA
0601-001819	LED205	LED	SA
0601-001819	LED206	LED	SA
0601-001819	LED213	LED	SA
0601-001819	LED214	LED	SA
0601-001819	LED215	LED	SA
0601-001819	LED217	LED	SA
0601-001819	LED219	LED	SA
0601-001819	LED220	LED	SA
0601-001819	LED222	LED	SA
0601-001819	LED225	LED	SA
0604-001306	U205	PHOTO-IRDA	SA
0801-002529	U109	IC-CMOS LOGIC	SA
1001-001306	U108	IC-ANALOG MULTIPLEX	SA
1009-001020	U203	IC-HALL EFFECT S/W	SA
1108-000010	U200	IC-MCP	SA
1201-002063	U110	IC-AUDIO AMP	SA
1201-002278	U100	IC-POWER AMP	SA
1203-003304	U107	IC-POWER SUPERVISOR	SA
1203-003663	U105	IC-BATTERY	SA
1203-003674	U204	IC-DC/DC CONVERTER	SA
1204-002161	U106	IC-MELODY	SA
1205-002683	U102	IC-TRANSCEIVER	SA
1209-001219	U202	IC-SENSOR	SA
1405-001082	ZD100	VARISTOR	SA
1405-001082	ZD101	VARISTOR	SA

SEC Code	Design LOC	Discription	Status
1405-001082	ZD102	VARISTOR	SA
1405-001082	ZD103	VARISTOR	SA
1405-001082	ZD104	VARISTOR	SA
1405-001082	ZD105	VARISTOR	SA
1405-001082	ZD106	VARISTOR	SA
1405-001082	ZD107	VARISTOR	SA
1405-001082	ZD108	VARISTOR	SA
1405-001082	ZD109	VARISTOR	SA
1405-001082	ZD110	VARISTOR	SA
1405-001082	ZD111	VARISTOR	SA
1405-001082	ZD113	VARISTOR	SA
1405-001082	ZD115	VARISTOR	SA
1405-001082	ZD117	VARISTOR	SA
1405-001082	ZD118	VARISTOR	SA
1405-001082	ZD119	VARISTOR	SA
1405-001082	ZD120	VARISTOR	SA
1405-001082	ZD202	VARISTOR	SA
1405-001082	ZD203	VARISTOR	SA
1405-001082	ZD204	VARISTOR	SA
1405-001082	ZD205	VARISTOR	SA
1405-001082	ZD206	VARISTOR	SA
1405-001082	ZD208	VARISTOR	SA
1405-001082	ZD209	VARISTOR	SA
1405-001082	ZD210	VARISTOR	SA
1405-001082	ZD211	VARISTOR	SA
1405-001082	ZD212	VARISTOR	SA
1405-001082	ZD213	VARISTOR	SA
2007-000140	R101	R-CHIP	SA
2007-000140	R107	R-CHIP	SA
2007-000140	R108	R-CHIP	SA
2007-000140	R111	R-CHIP	SA
2007-000140	R112	R-CHIP	SA
2007-000140	R113	R-CHIP	SA

SEC Code	Design LOC	Discription	Status
2007-000140	R114	R-CHIP	SA
2007-000140	R115	R-CHIP	SA
2007-000140	R116	R-CHIP	SA
2007-000140	R120	R-CHIP	SA
2007-000140	R121	R-CHIP	SA
2007-000140	R122	R-CHIP	SA
2007-000140	R123	R-CHIP	SA
2007-000140	R145	R-CHIP	SA
2007-000140	R183	R-CHIP	SA
2007-000140	R212	R-CHIP	SA
2007-000143	R241	R-CHIP	SA
2007-000148	R137	R-CHIP	SA
2007-000148	R142	R-CHIP	SA
2007-000148	R150	R-CHIP	SA
2007-000148	R152	R-CHIP	SA
2007-000148	R157	R-CHIP	SA
2007-000153	R117	R-CHIP	SA
2007-000157	R176	R-CHIP	SA
2007-000157	R184	R-CHIP	SA
2007-000157	R204	R-CHIP	SA
2007-000161	R140	R-CHIP	SA
2007-000161	R144	R-CHIP	SA
2007-000161	R151	R-CHIP	SA
2007-000161	R153	R-CHIP	SA
2007-000162	R172	R-CHIP	SA
2007-000162	R182	R-CHIP	SA
2007-000162	R209	R-CHIP	SA
2007-000162	R213	R-CHIP	SA
2007-000162	R243	R-CHIP	SA
2007-000164	R155	R-CHIP	SA
2007-000170	R214	R-CHIP	SA
2007-000171	R127	R-CHIP	SA
2007-000171	R134	R-CHIP	SA

SEC Code	Design LOC	Discription	Status
2007-000171	R166	R-CHIP	SA
2007-000171	R168	R-CHIP	SA
2007-000171	R175	R-CHIP	SA
2007-000171	R177	R-CHIP	SA
2007-000171	R178	R-CHIP	SA
2007-000171	R187	R-CHIP	SA
2007-000172	R128	R-CHIP	SA
2007-000172	R135	R-CHIP	SA
2007-000172	R200	R-CHIP	SA
2007-000172	R201	R-CHIP	SA
2007-000173	R162	R-CHIP	SA
2007-000173	R163	R-CHIP	SA
2007-000242	R139	R-CHIP	SA
2007-000242	R148	R-CHIP	SA
2007-000242	R149	R-CHIP	SA
2007-000566	R104	R-CHIP	SA
2007-000566	R105	R-CHIP	SA
2007-000566	R179	R-CHIP	SA
2007-000566	R180	R-CHIP	SA
2007-000566	R181	R-CHIP	SA
2007-000775	R156	R-CHIP	SA
2007-000775	R158	R-CHIP	SA
2007-000831	R185	R-CHIP	SA
2007-001119	R147	R-CHIP	SA
2007-001119	R169	R-CHIP	SA
2007-001284	R250	R-CHIP	SA
2007-001292	R244	R-CHIP	SA
2007-001292	R247	R-CHIP	SA
2007-001292	R248	R-CHIP	SA
2007-001292	R249	R-CHIP	SA
2007-001292	R252	R-CHIP	SA
2007-001292	R255	R-CHIP	SA
2007-001301	R227	R-CHIP	SA

SEC Code	Design LOC	Discription	Status
2007-001301	R229	R-CHIP	SA
2007-001301	R231	R-CHIP	SA
2007-001301	R235	R-CHIP	SA
2007-001307	R230	R-CHIP	SA
2007-001307	R234	R-CHIP	SA
2007-001307	R237	R-CHIP	SA
2007-001307	R238	R-CHIP	SA
2007-001308	R133	R-CHIP	SA
2007-001323	R146	R-CHIP	SA
2007-001325	R159	R-CHIP	SA
2007-001335	R186	R-CHIP	SA
2007-002797	R131	R-CHIP	SA
2007-002965	R242	R-CHIP	SA
2007-007107	R173	R-CHIP	SA
2007-007107	R174	R-CHIP	SA
2007-007142	R206	R-CHIP	SA
2007-007573	R207	R-CHIP	SA
2007-007573	R216	R-CHIP	SA
2007-008137	R170	R-CHIP	SA
2007-008516	R118	R-CHIP	SA
2007-008516	R143	R-CHIP	SA
2007-008542	R102	R-CHIP	SA
2007-008542	R188	R-CHIP	SA
2007-008542	R189	R-CHIP	SA
2007-009160	R171	R-CHIP	SA
2203-000233	C133	C-CER,CHIP	SA
2203-000233	C135	C-CER,CHIP	SA
2203-000233	C175	C-CER,CHIP	SA
2203-000233	C220	C-CER,CHIP	SA
2203-000233	L102	C-CER,CHIP	SA
2203-000254	C152	C-CER,CHIP	SA
2203-000254	C153	C-CER,CHIP	SA
2203-000254	C165	C-CER,CHIP	SA

SEC Code	Design LOC	Discription	Status
2203-000254	C201	C-CER,CHIP	SA
2203-000254	C204	C-CER,CHIP	SA
2203-000254	C206	C-CER,CHIP	SA
2203-000254	C207	C-CER,CHIP	SA
2203-000254	C208	C-CER,CHIP	SA
2203-000254	C210	C-CER,CHIP	SA
2203-000254	C212	C-CER,CHIP	SA
2203-000278	C157	C-CER,CHIP	SA
2203-000278	C216	C-CER,CHIP	SA
2203-000278	C217	C-CER,CHIP	SA
2203-000359	C160	C-CER,CHIP	SA
2203-000359	C161	C-CER,CHIP	SA
2203-000386	C127	C-CER,CHIP	SA
2203-000438	C166	C-CER,CHIP	SA
2203-000438	C176	C-CER,CHIP	SA
2203-000438	C190	C-CER,CHIP	SA
2203-000438	C192	C-CER,CHIP	SA
2203-000466	C126	C-CER,CHIP	SA
2203-000679	C200	C-CER,CHIP	SA
2203-000812	C140	C-CER,CHIP	SA
2203-000812	C141	C-CER,CHIP	SA
2203-000812	C142	C-CER,CHIP	SA
2203-000812	C198	C-CER,CHIP	SA
2203-000854	C181	C-CER,CHIP	SA
2203-000854	C184	C-CER,CHIP	SA
2203-000940	C138	C-CER,CHIP	SA
2203-000995	C134	C-CER,CHIP	SA
2203-000995	C136	C-CER,CHIP	SA
2203-000995	C219	C-CER,CHIP	SA
2203-001072	C183	C-CER,CHIP	SA
2203-001412	C129	C-CER,CHIP	SA
2203-005065	C168	C-CER,CHIP	SA
2203-005065	C170	C-CER,CHIP	SA

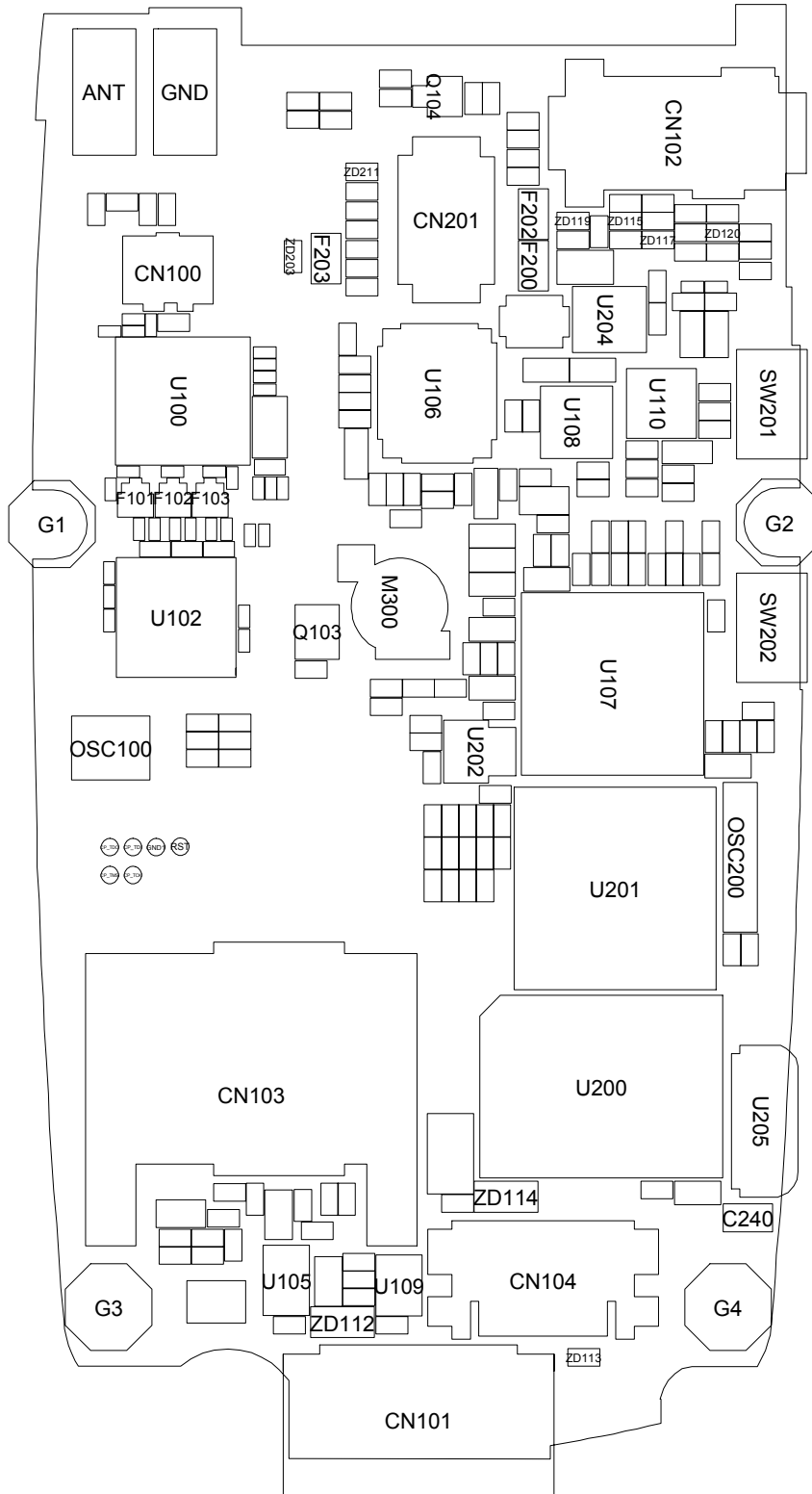
SEC Code	Design LOC	Discription	Status
2203-005065	C171	C-CER,CHIP	SA
2203-005065	C172	C-CER,CHIP	SA
2203-005065	C173	C-CER,CHIP	SA
2203-005065	C174	C-CER,CHIP	SA
2203-005482	C121	C-CER,CHIP	SA
2203-005482	C139	C-CER,CHIP	SA
2203-005482	C155	C-CER,CHIP	SA
2203-005482	C156	C-CER,CHIP	SA
2203-005482	C158	C-CER,CHIP	SA
2203-005482	C164	C-CER,CHIP	SA
2203-005482	C167	C-CER,CHIP	SA
2203-005482	C178	C-CER,CHIP	SA
2203-005482	C180	C-CER,CHIP	SA
2203-005482	C188	C-CER,CHIP	SA
2203-005482	C196	C-CER,CHIP	SA
2203-005482	C203	C-CER,CHIP	SA
2203-005482	C211	C-CER,CHIP	SA
2203-005482	C213	C-CER,CHIP	SA
2203-005482	C215	C-CER,CHIP	SA
2203-005482	C218	C-CER,CHIP	SA
2203-005482	C221	C-CER,CHIP	SA
2203-005482	C224	C-CER,CHIP	SA
2203-005482	C239	C-CER,CHIP	SA
2203-005682	C113	C-CER,CHIP	SA
2203-005682	C114	C-CER,CHIP	SA
2203-005682	C115	C-CER,CHIP	SA
2203-005682	C116	C-CER,CHIP	SA
2203-005682	C120	C-CER,CHIP	SA
2203-005736	C106	C-CER,CHIP	SA
2203-005736	C107	C-CER,CHIP	SA
2203-005736	C108	C-CER,CHIP	SA
2203-005736	C110	C-CER,CHIP	SA
2203-005792	C105	C-CER,CHIP	SA

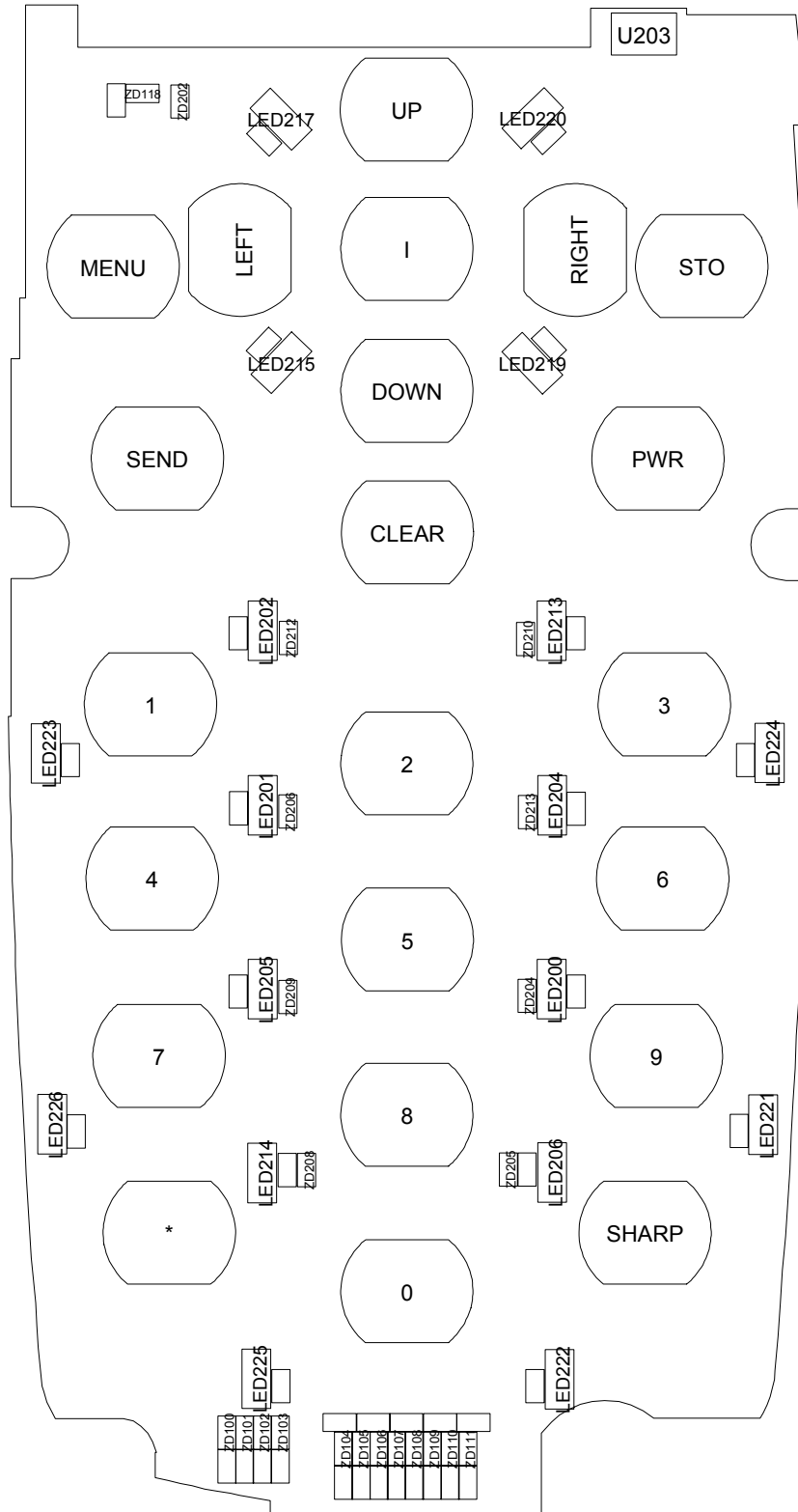
SEC Code	Design LOC	Discription	Status
2203-005792	C109	C-CER,CHIP	SA
2203-005792	C122	C-CER,CHIP	SA
2203-005792	C125	C-CER,CHIP	SA
2203-006137	C132	C-CER,CHIP	SA
2203-006137	C179	C-CER,CHIP	SA
2203-006137	C202	C-CER,CHIP	SA
2203-006183	C225	C-CER,CHIP	SA
2203-006194	C101	C-CER,CHIP	SA
2203-006194	C146	C-CER,CHIP	SA
2203-006201	C162	C-CER,CHIP	SA
2203-006208	C197	C-CER,CHIP	SA
2203-006208	C241	C-CER,CHIP	SA
2203-006257	C149	C-CER,CHIP	SA
2203-006260	C205	C-CER,CHIP	SA
2203-006260	C209	C-CER,CHIP	SA
2203-006260	C214	C-CER,CHIP	SA
2203-006318	C102	C-CER,CHIP	SA
2203-006318	C117	C-CER,CHIP	SA
2203-006318	C118	C-CER,CHIP	SA
2203-006399	C182	C-CER,CHIP	SA
2203-006423	C100	C-CER,CHIP	SA
2203-006423	C112	C-CER,CHIP	SA
2203-006423	C150	C-CER,CHIP	SA
2203-006423	C151	C-CER,CHIP	SA
2203-006438	C222	C-CER,CHIP	SA
2203-006556	C119	C-CER,CHIP	SA
2203-006556	C199	C-CER,CHIP	SA
2203-006626	C130	C-CER,CHIP	SA
2203-006626	C137	C-CER,CHIP	SA
2203-006638	C189	C-CER,CHIP	SA
2203-006638	C191	C-CER,CHIP	SA
2203-006648	C147	C-CER,CHIP	SA
2404-001225	C103	C-TA,CHIP	SA

SEC Code	Design LOC	Discription	Status
2404-001225	C124	C-TA,CHIP	SA
2404-001225	C148	C-TA,CHIP	SA
2404-001274	C123	C-TA,CHIP	SA
2404-001339	C163	C-TA,CHIP	SA
2404-001343	C177	C-TA,CHIP	SA
2404-001352	C185	C-TA,CHIP	SA
2404-001374	C111	C-TA,CHIP	SA
2404-001381	C195	C-TA,CHIP	SA
2404-001394	C186	C-TA,CHIP	SA
2404-001394	C187	C-TA,CHIP	SA
2404-001394	C223	C-TA,CHIP	SA
2404-001394	C240	C-TA,CHIP	SA
2703-002203	L113	INDUCTOR-SMD	SA
2703-002313	L101	INDUCTOR-SMD	SA
2703-002484	L106	INDUCTOR-SMD	SA
2703-002485	L104	INDUCTOR-SMD	SA
2703-002558	L110	INDUCTOR-SMD	SA
2703-002603	L105	INDUCTOR-SMD	SA
2703-002767	L201	INDUCTOR-SMD	SA
2703-002842	L100	INDUCTOR-SMD	SA
2703-002842	L111	INDUCTOR-SMD	SA
2801-003856	OSC200	CRYSTAL-SMD	SA
2801-004426	OSC100	CRYSTAL-SMD	SA
2901-001296	F200	FILTER-EMI SMD	SA
2901-001296	F202	FILTER-EMI SMD	SA
2901-001296	F203	FILTER-EMI SMD	SA
2904-001592	F101	FILTER-SAW	SA
2904-001599	F102	FILTER-SAW	SA
2904-001600	F103	FILTER-SAW	SA
3301-001158	L108	BEAD-SMD	SA
3301-001158	L109	BEAD-SMD	SA
3301-001342	L200	BEAD-SMD	SA
3404-001152	SW201	SWITCH-TACT	SA

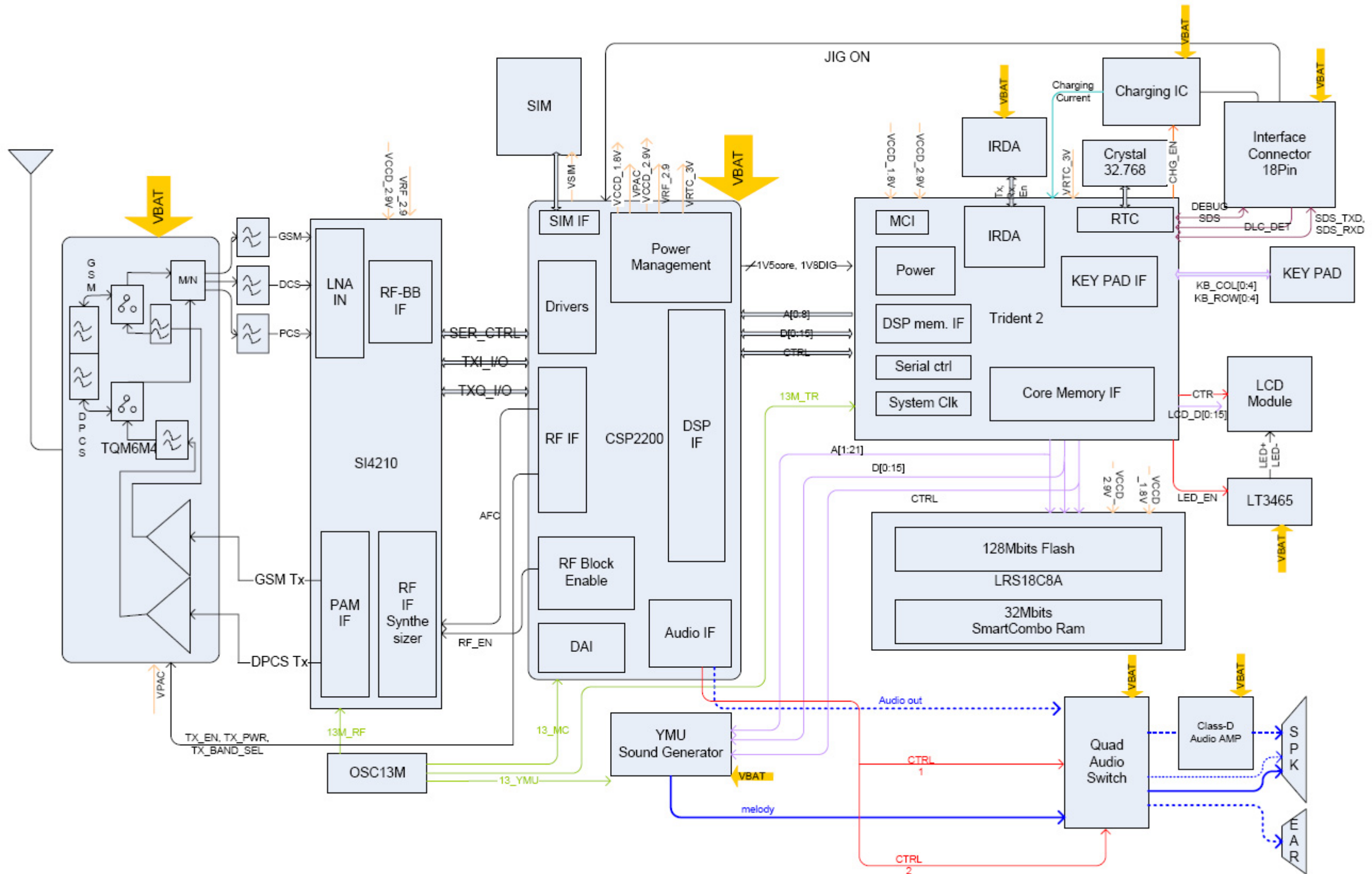
SEC Code	Design LOC	Discription	Status
3404-001152	SW202	SWITCH-TACT	SA
3705-001358	CN100	CONNECTOR-COAXIAL	SA
3709-001384	CN103	CONNECTOR-CARD EDGE	SA
3710-001611	CN101	CONNECTOR-INTERFACE	SA
3711-005728	CN201	HEADER-BOARD TO BOARD	SA
3711-005901	CN104	CONNECTOR-BATTERY	SA
3722-002067	CN102	JACK-EAR PHONE	SA
4302-001130	M300	BATTERY-LI(2ND)	SA
GH09-00036A	U201	IC MICOM-SGHX480	SA
GH30-00177F		MICROPHONE-ASSY-6.25MM	SA
GH41-00980A		PCB MAIN-SGHX200	SNA
GH59-02438A		UNIT-METAL DOME	SA
GH68-02026A		LABEL(P)-WATER SOAK	SA
GH71-04302A	ANT	NPR-ANTENNA CONTACT	SA
GH71-04302A	GND	NPR-ANTENNA CONTACT	SA
GH73-05229A		RMO-INT CONTACT RUBBER	SNA
GH73-05342A		RMO-MIC HOLDER	SA
GH73-05471A		RMO-BGA RUBBER T	SA
GH73-05472A		RMO-BGA RUBBER M	SA
GH73-05473A		RMO-BGA RUBBER B	SA
GH73-05641A		RMO-YAMAHA RUUBBER	SA
GH74-17895A		MPR-TAPE DOME SHEET	SA
GH74-17897A		MPR-TAPE J TAG MK	SA
GH74-18126A		MPR-TAPE INTENNA RUBBER	SNA
GH74-18593A		MPR-FPCB PORON	SA
GH75-08200A		MEC-INTENNA CONN RUBBER	SA

5. SGH-X200 PCB Diagrams





6. SGH-X200 Block Diagrams



**SAMSUNG
ELECTRONICS**

