

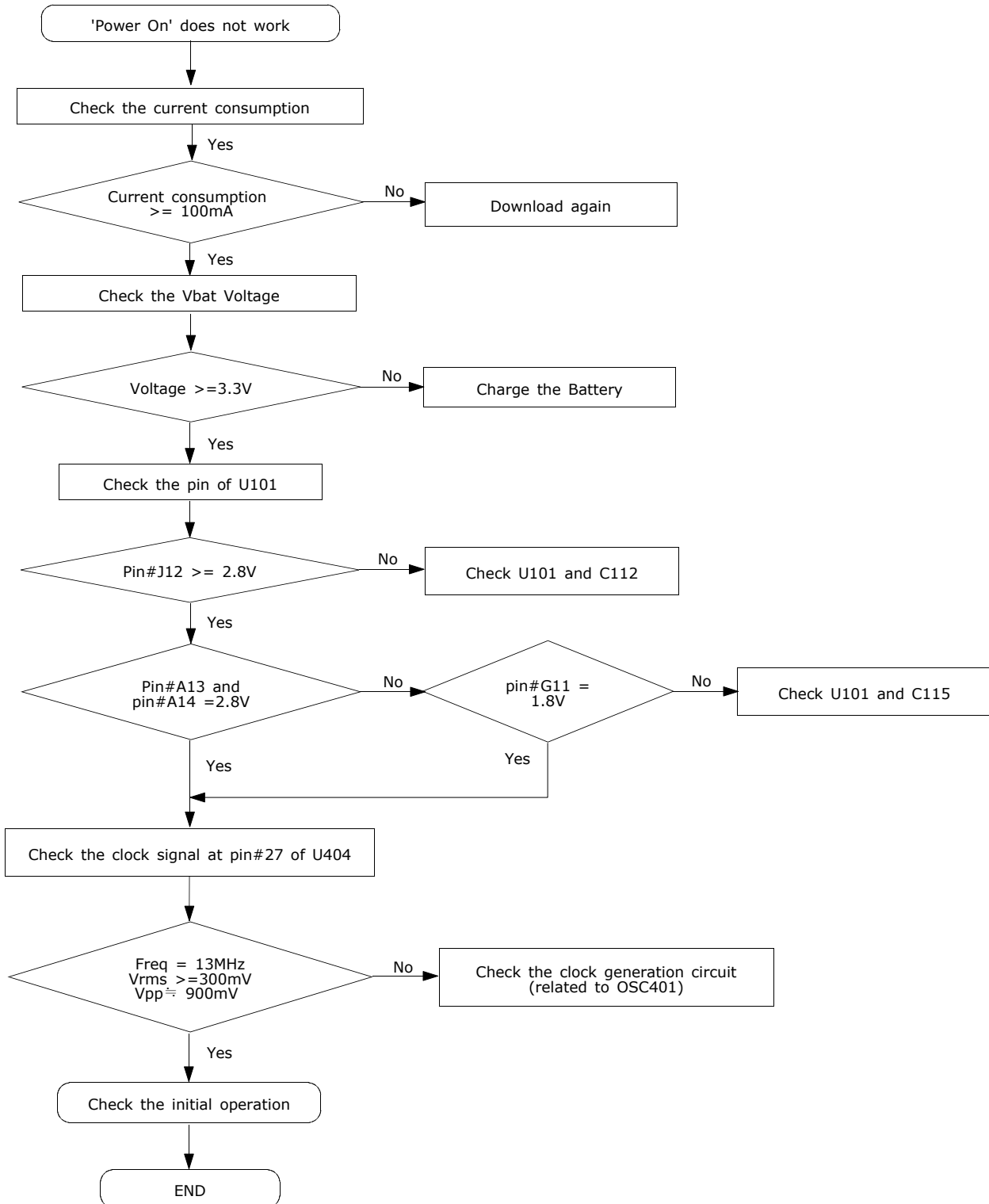
---

## 2. SGH-X140 Flow Chart of Troubleshooting

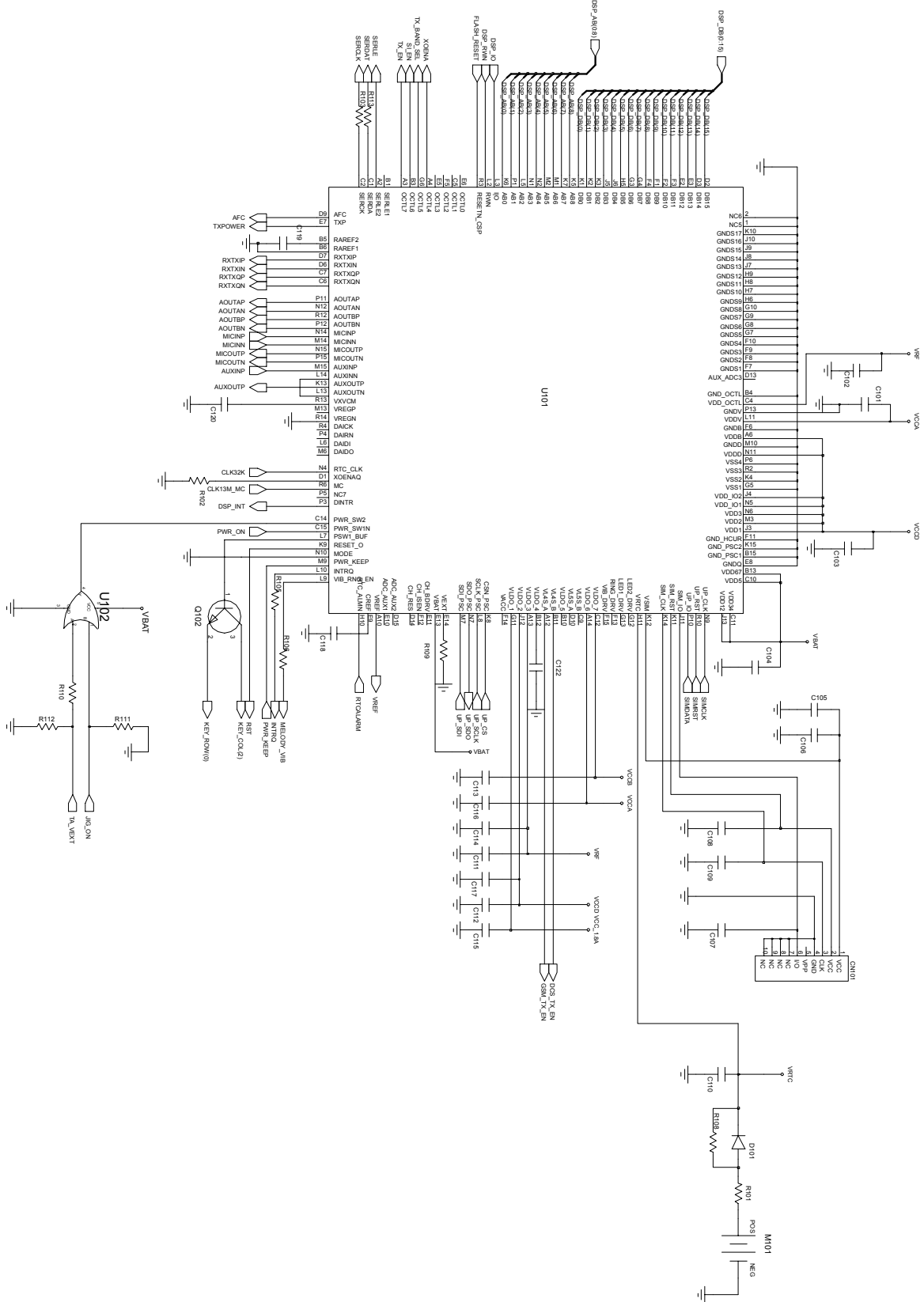
---

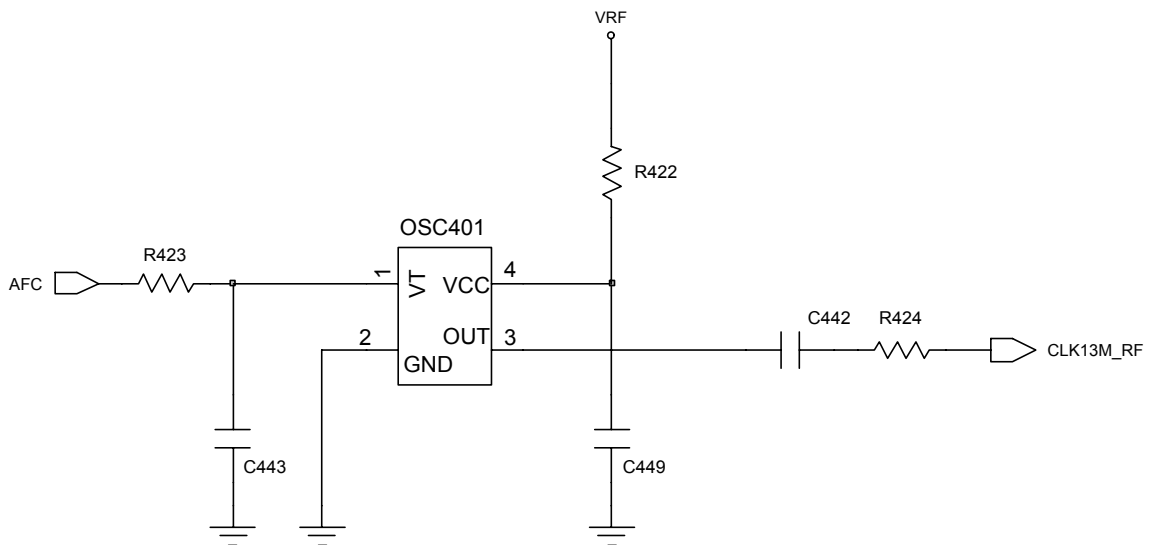
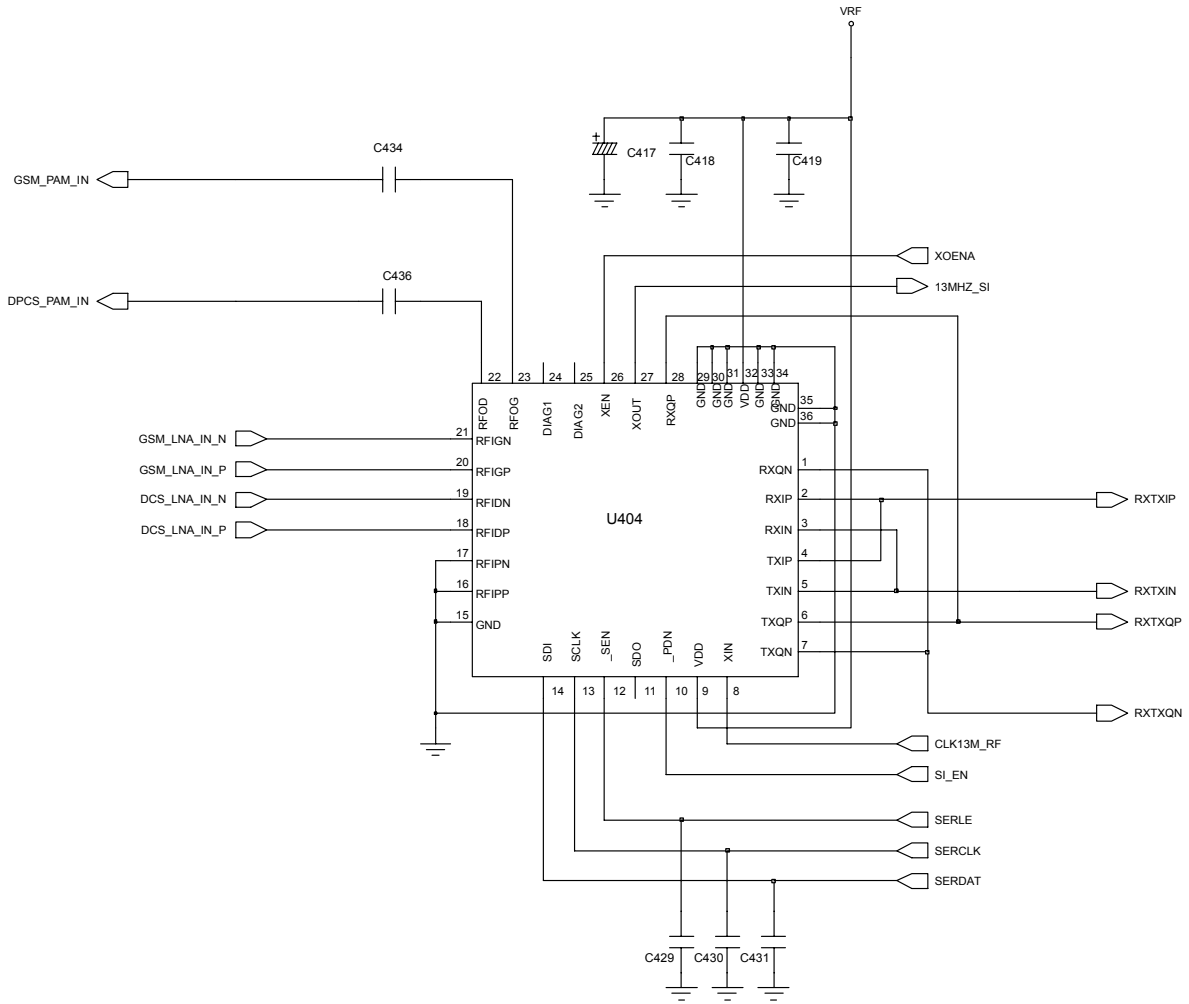
### 2-1. Baseband

#### 2-1-1. Power ON

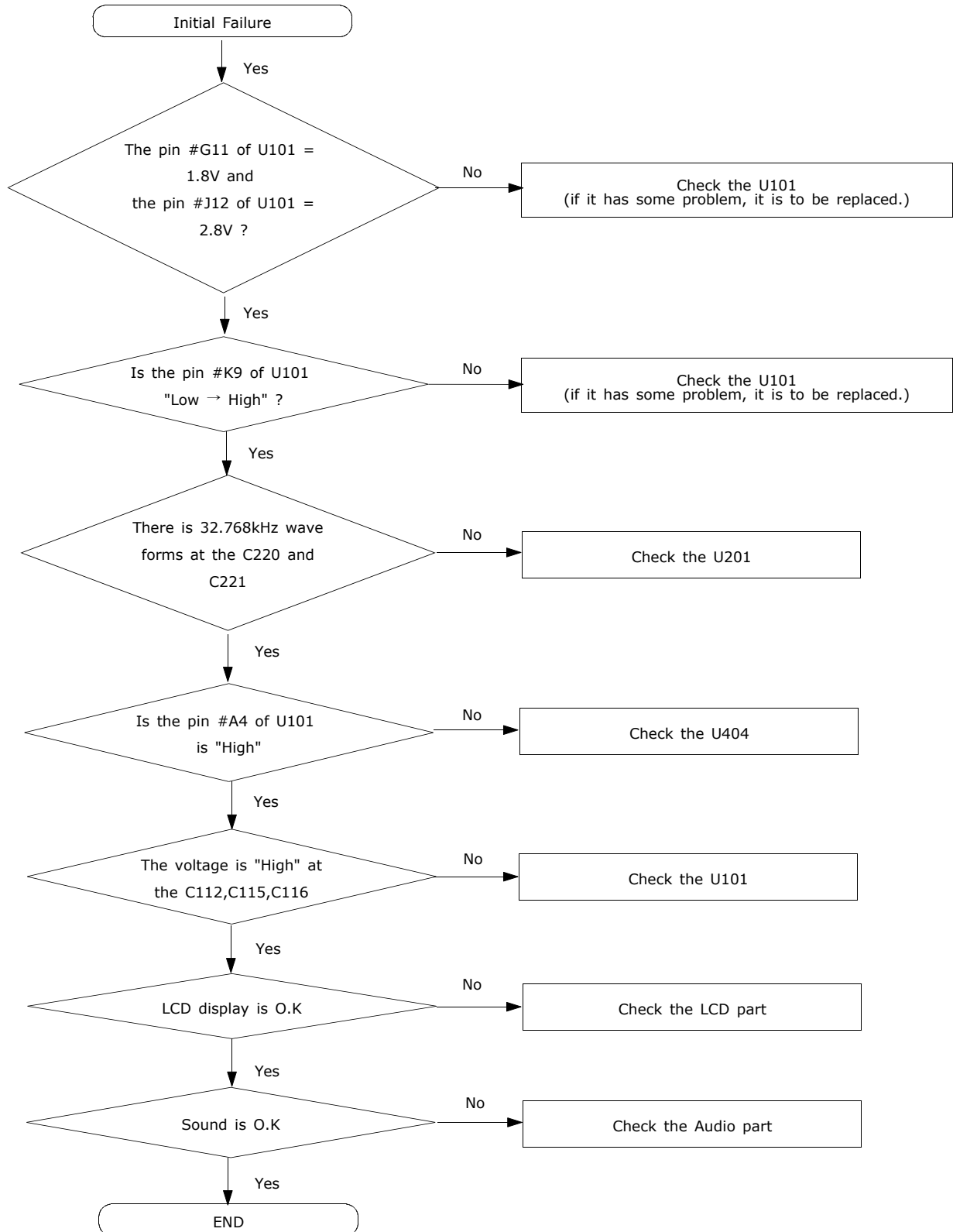


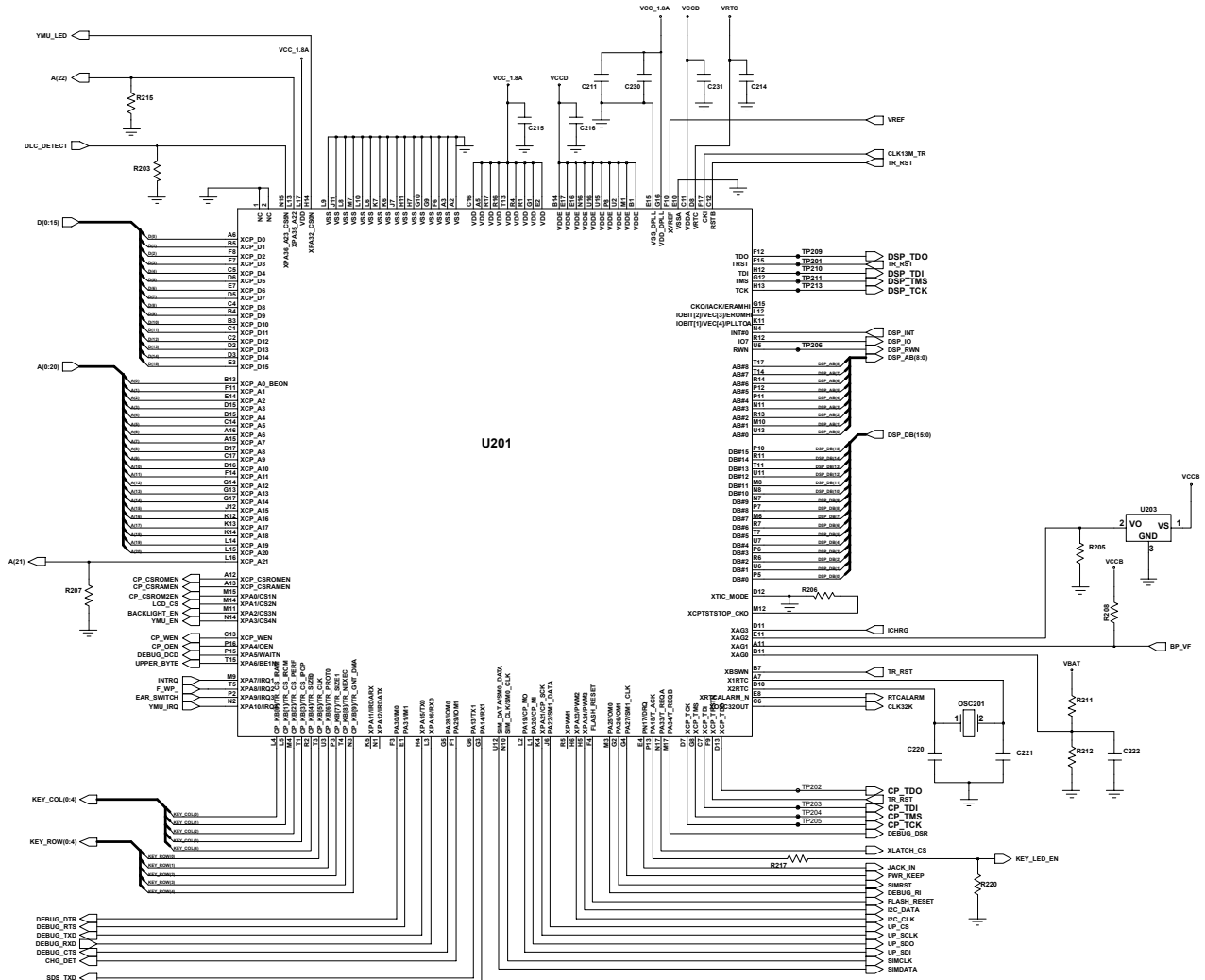
SGH-X140 Flow Chart of Troubleshooting



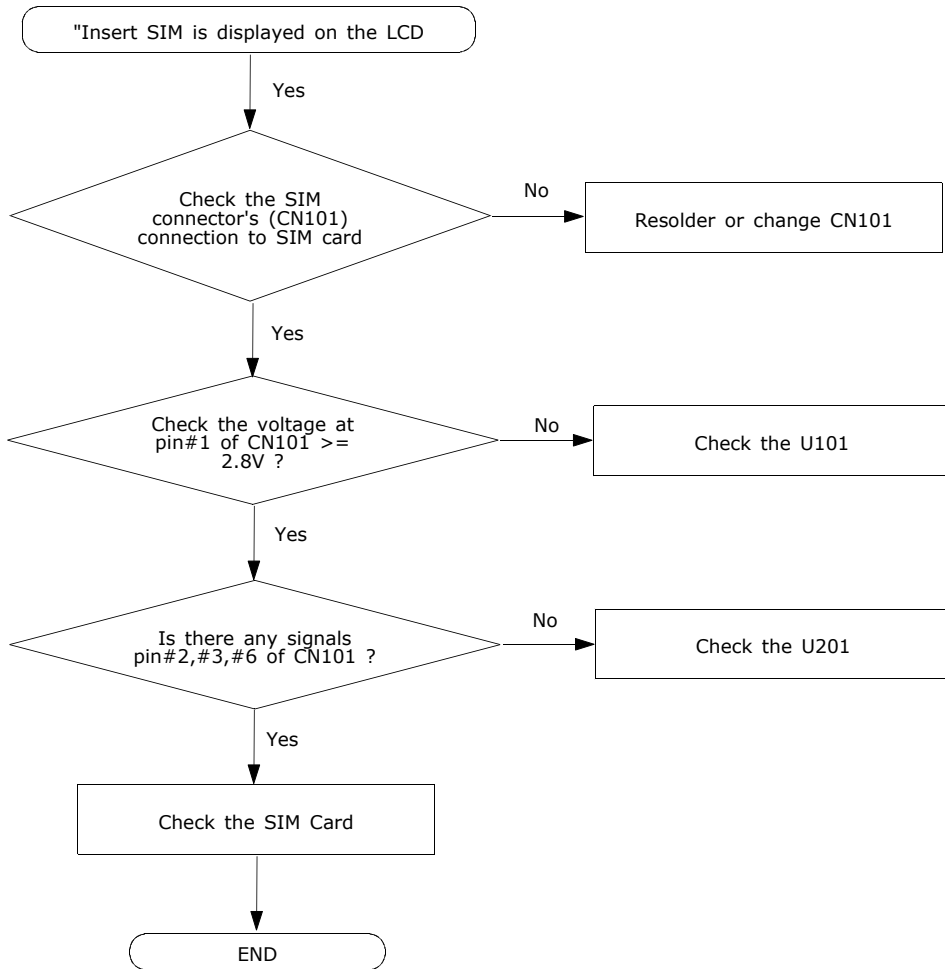


### 2-1-2. Initial

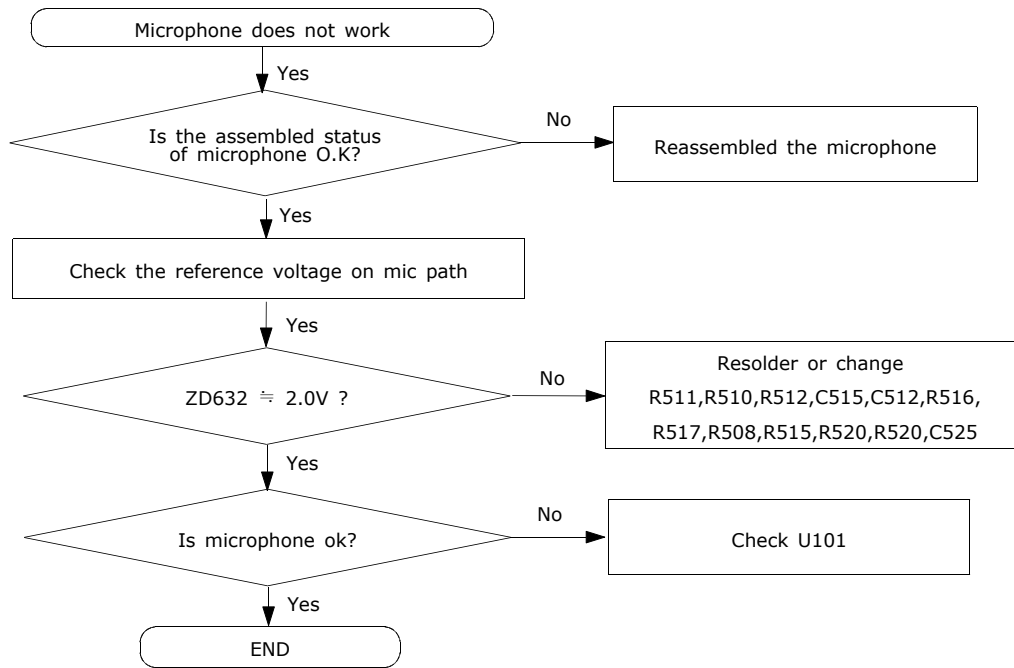




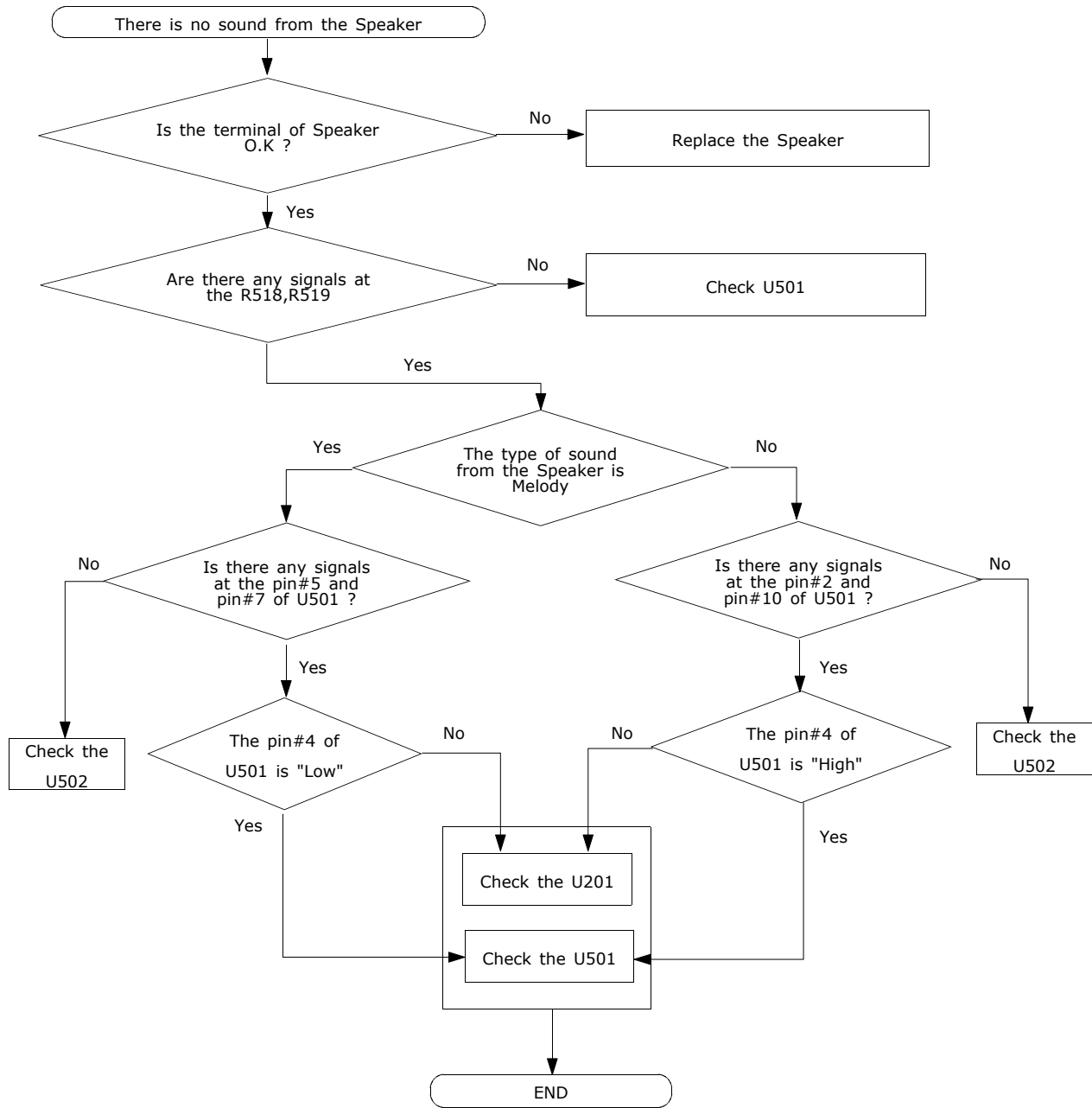
### 2-1-3. Sim Part



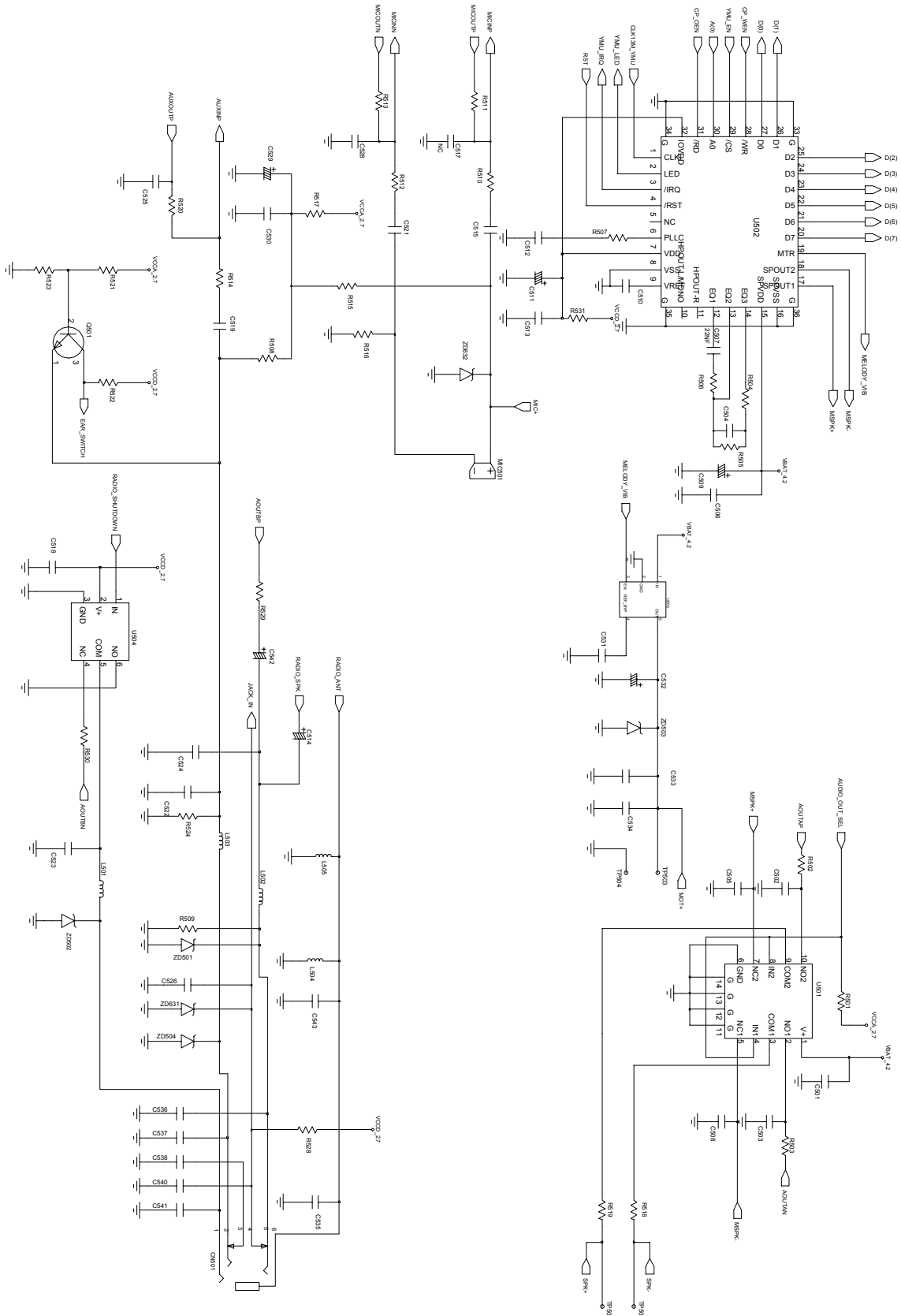
### 2-1-4. Microphone Part



### 2-1-5. Speaker Part



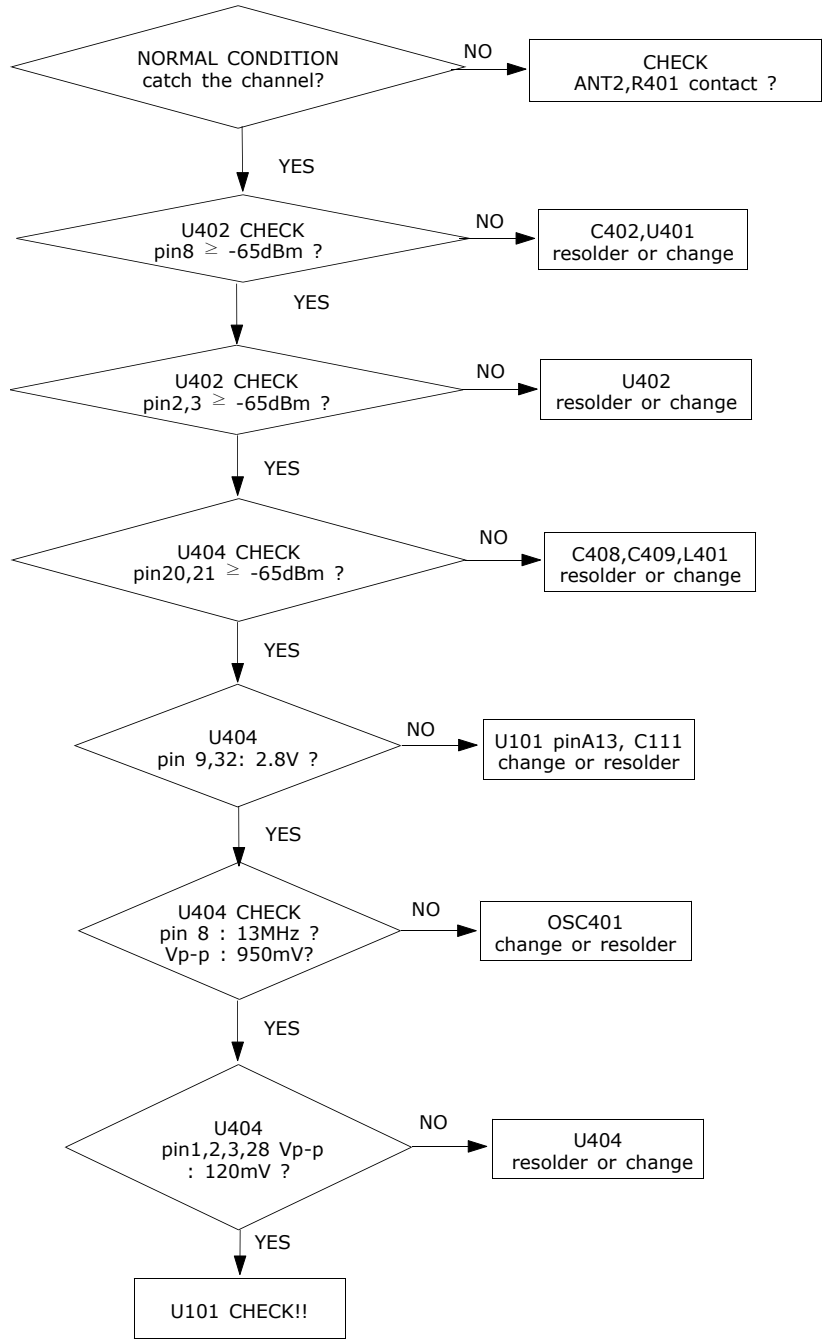




## 2-2.RF

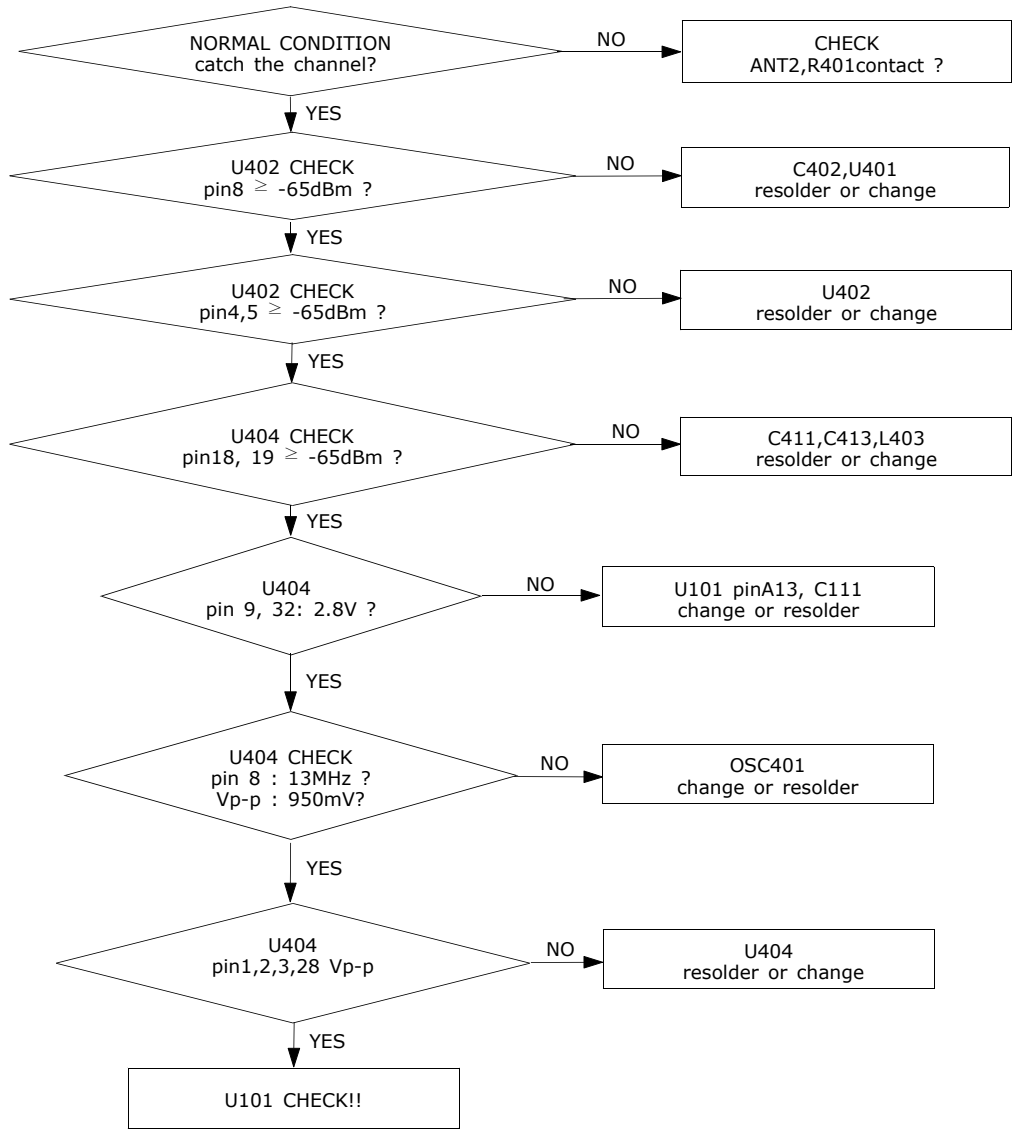
### 2-2-1. EGSM RX

CONTINUOUS RX ON  
 RF INPUT : 62CH  
 AMP : -50dBm

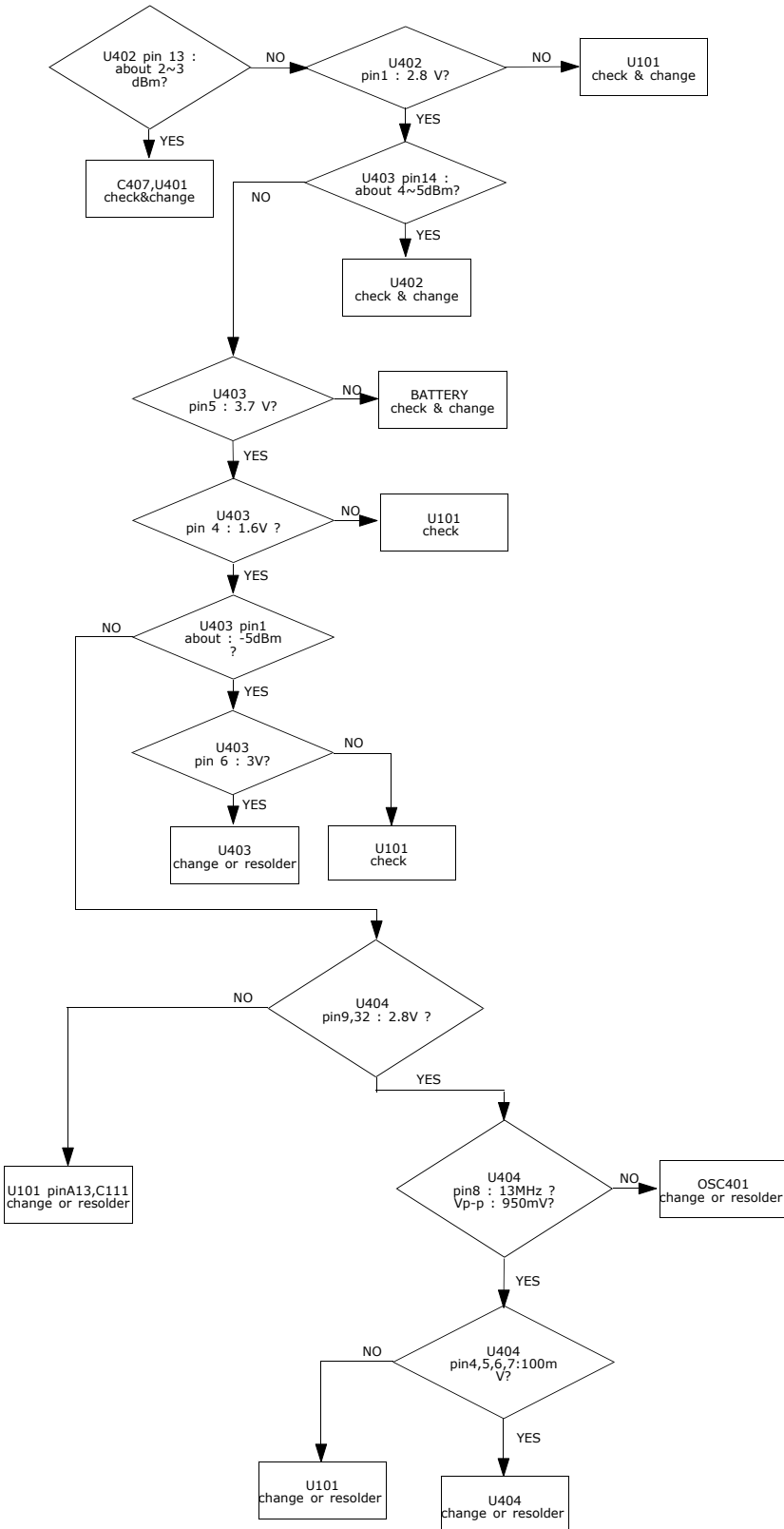


2-2-2. DCS RX

CONTINUOUS RX ON  
 RF INPUT : 698CH  
 AMP : -50dBm

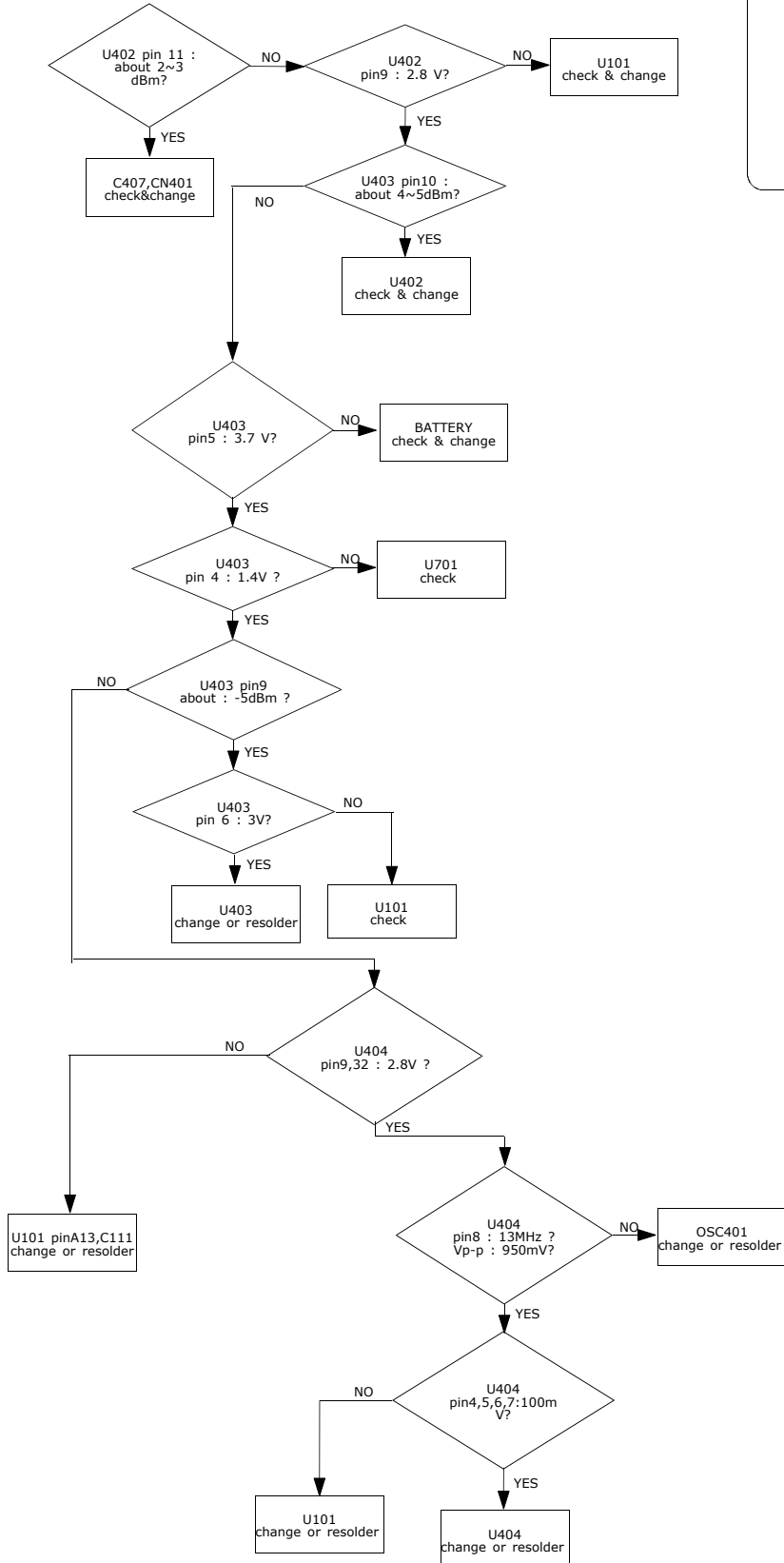


2-2-3. EGSM TX



CONTINUOUS TX ON CONDITION  
 TX POWER DAC: 600 CODE APPLIED  
 CH : 62  
 RBW : 100KHz  
 VBW : 100KHz  
 SPAN : 10MHz  
 REF LEV. : 10dBm  
 ATT. : 20dB

2-2-4. DCS TX



CONTINUOUS TX ON CONDITION  
 CH : 698CH(DCS)  
 TX POWER CODE: 520 CODE Applied  
 RBW : 100KHz  
 VBW : 100KHz  
 SPAN : 10MHz  
 REF LEV. : 10dBm  
 ATT. : 20dB

