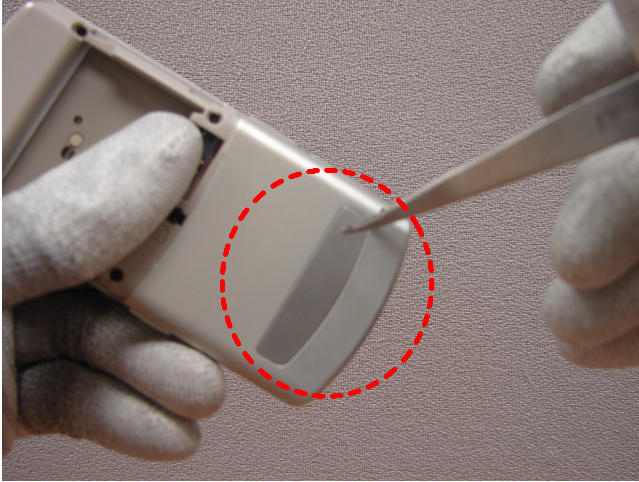


## 7. Disassembly and Assembly Instructions

### 7-1. Disassembly

1

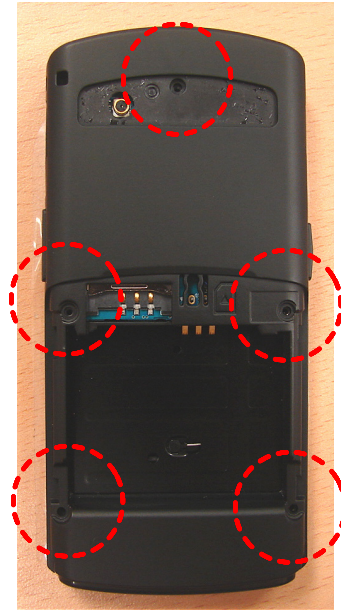


1) Disjoint REAR DECO.

※ **Caution**

1. Take care so that do not scratch on the REAR DECO.

2



1) Unscrew 5 points.

※ **Caution**

1. Unscrew 5 points to detach REAR.

3

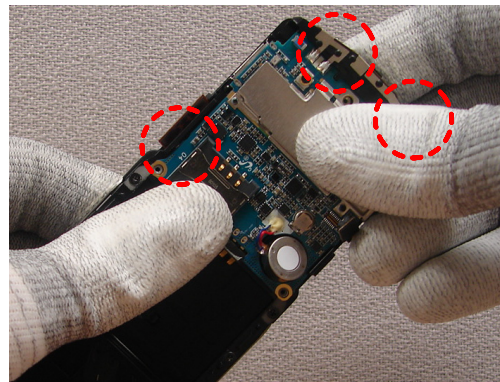


1) Detach REAR.

※ **Caution**

1. Pull upper side of REAR to detach it.

4

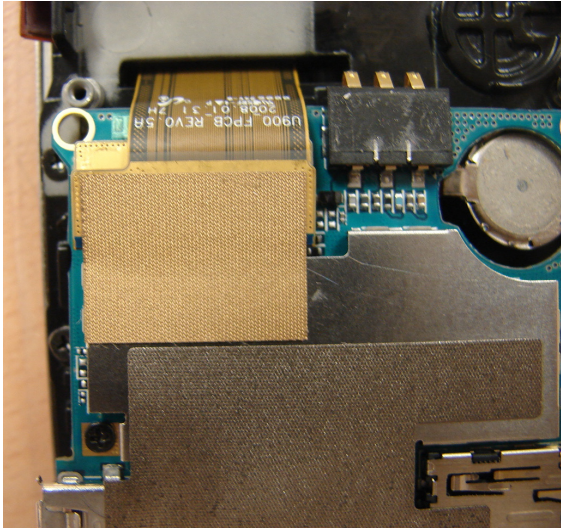


1) Disjoint PBA..

※ **Caution**

1. While checking the attachments, detach PBA carefully from set.
2. Do not force too much on Intenna and screw hole close to vibration motor.

5

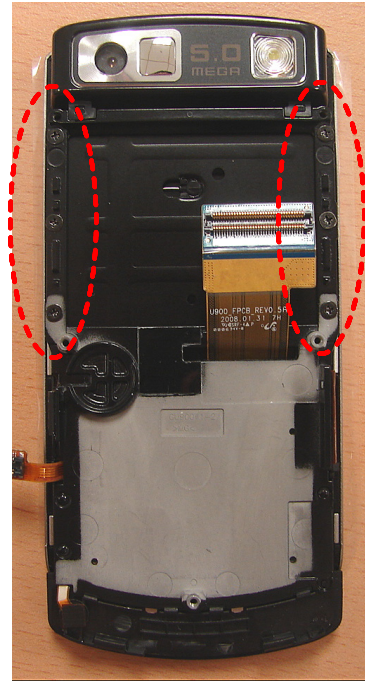


1) Remove connector gasket tape.

※ **Caution**

1. Remove connector gasket tape carefully.
2. Slight damage on SLIDE FPCB is not permitted.

6



1) Disjoint FRONT screws.

7

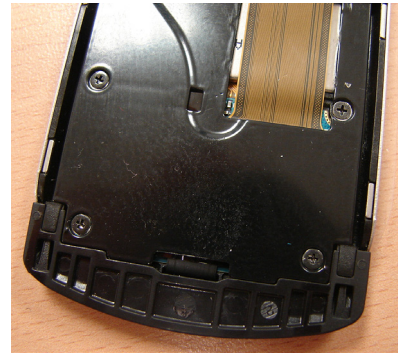


1) Separate FRONT from LCD ASS'Y.

※ **Caution**

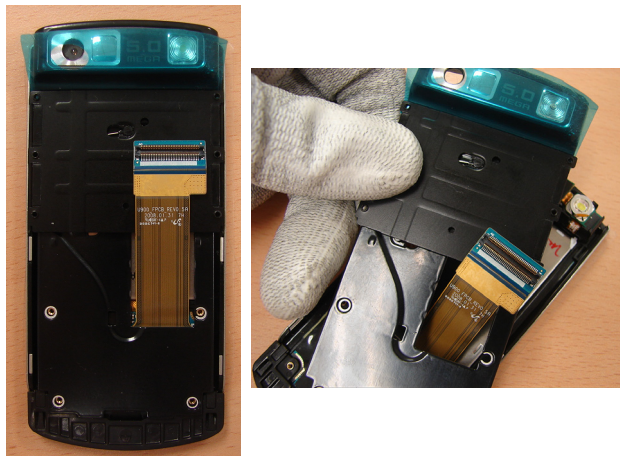
1. Down the FRONT and detach it.

8



1) Disjoint LOWER screw.

9

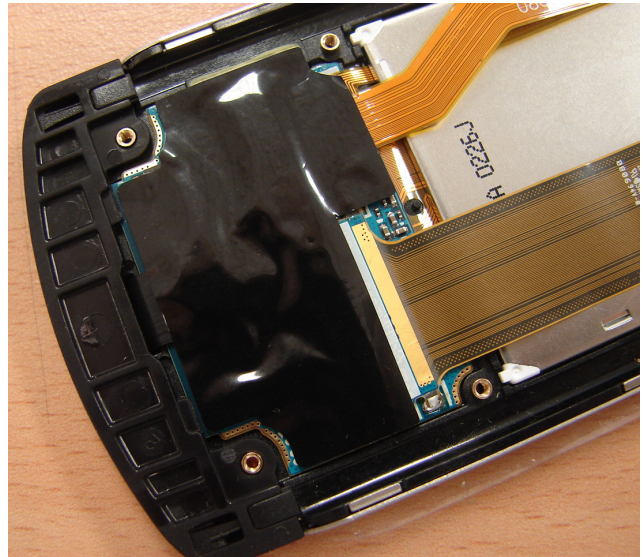


1) Separate LOWER.

※ **Caution**

1. Lift bottom of LOWER about 1cm and stir slightly.
2. Detach the LOWER while SLIDE FPCB damaged.

10

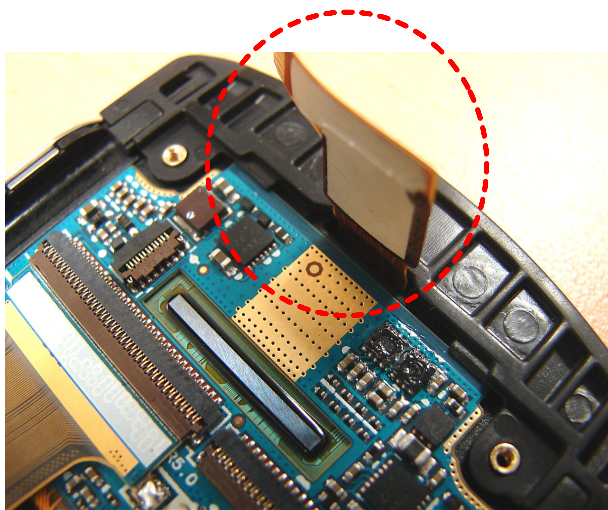


1) Remove black tape.

※ **Caution**

1. Remove the black tape carefully.

11

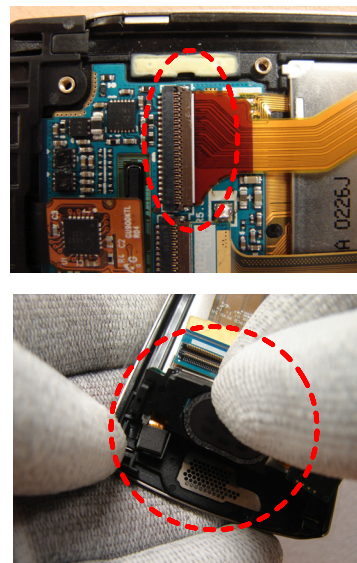


1) Disjoint TOUCH KEY FPCB.

※ **Caution**

1. Open the connector and disjoint TOUCH KEY FPCB.

12

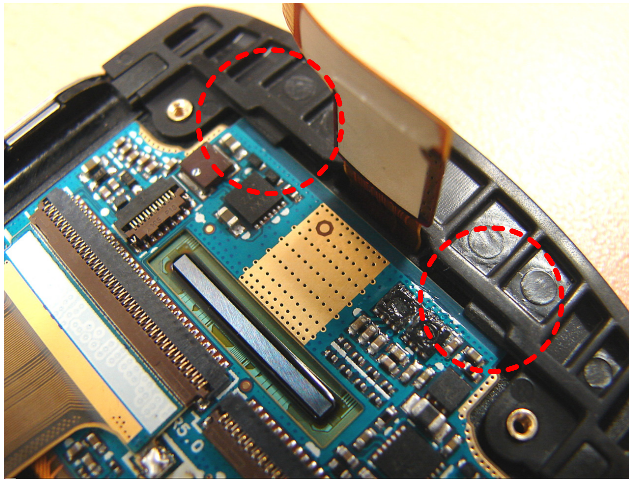


1) Disjoint camera part.

※ **Caution**

1. Disjoint the CAMERA FPCB.
2. Disjoint speaker and CIF camera.

13



- 1) Disjoint SUB LCD HOOK.
- ※ **Caution**
- 1. Lean LOWER BOTTOM to window side to disjoint it from LCD ASS'Y.

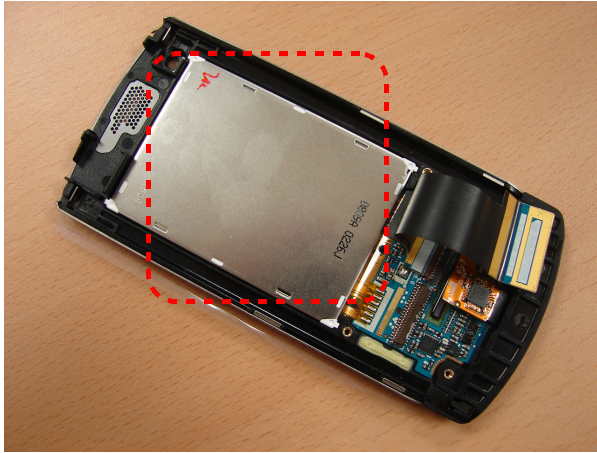
14



- 1) Separate LCD.
- ※ **Caution**
- 1. Lift the upside of LCD first and lift LCD PBA next.
  - 2. Because the FPCB between LCD and LCD PBA are easy to be torn, lift the LCD PBA with care.

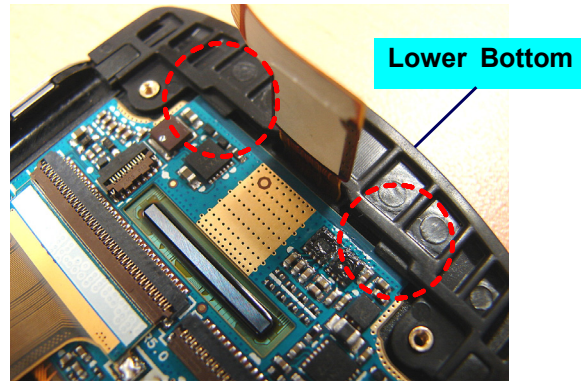
## 7-2. Assembly

1



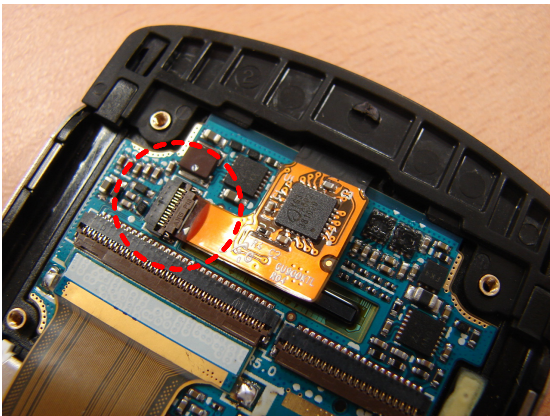
- 1) Put the main LCD in window frame.  
**※ Caution**  
 1. First, put the main LCD part in window frame.  
 Main LCD consists of display part and PBA part.  
 Red dashed lines point to display part.

2



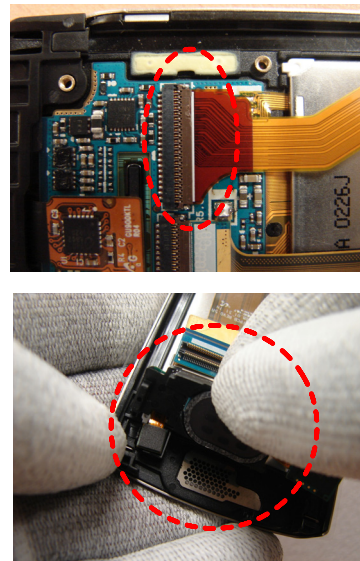
- 1) Put the lower bottom to right position.  
**※ Caution**  
 1. Insert lower bottom to LCD ASS'Y.  
 2. First, match window side then lean toward PBA side.  
 3. Lean the lower bottom until it sound undertone.

3



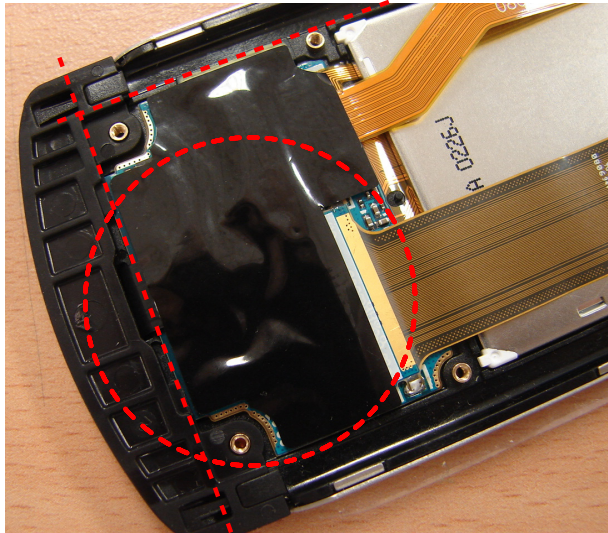
- 1) Assemble touch key FPCB to connector.  
**※ Caution**  
 1. Assemble touch key FPCB to connector (dashed line).  
 2. Locate connector so that white silk lines aligned.

4



- 1) Combine camera.  
**※ Caution**  
 1. Connect camera FPCB to connector(dashed line).  
 2. Keep white silk line aligned.  
 3. Assemble by CIF camera/speaker/5MEGA camera order.

5



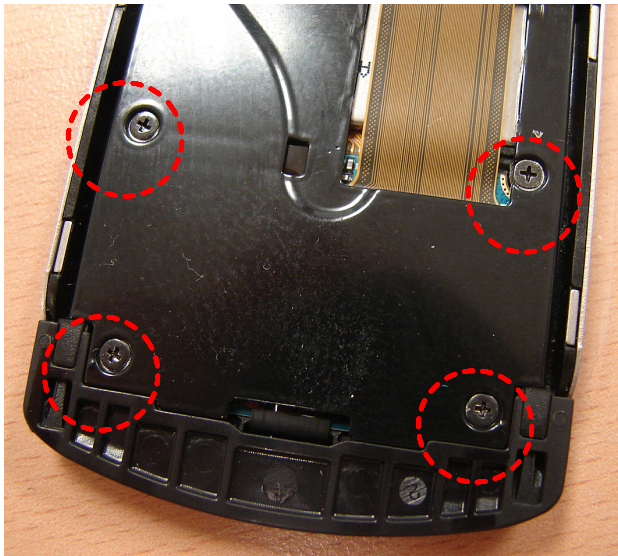
- 1) Attach black tape like picture below.  
 ※ **Caution**  
 1. Make sure not to cross over base line above.  
 2. Attach black tape like that way.

6



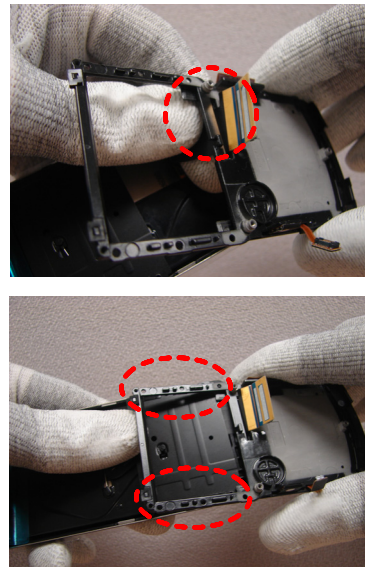
- 1) Combine LOWER.  
 ※ **Caution**  
 1. Insert FPCB between LOWER hole.  
 2. Combine top position HOOK and lower position screw assembly part.

7



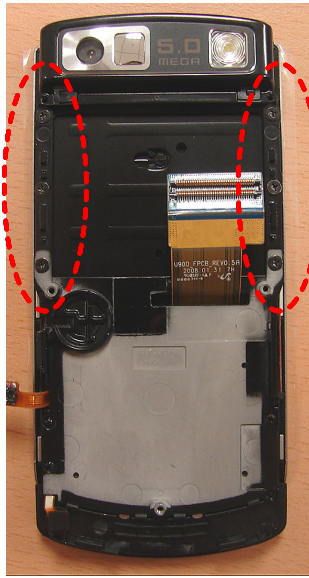
- 1) Contract LOWER screw.  
 ※ **Caution**  
 1. Confirm screw size. (1.4\* 2.5mm)  
 2. Screw after dashed positions are matched.

8



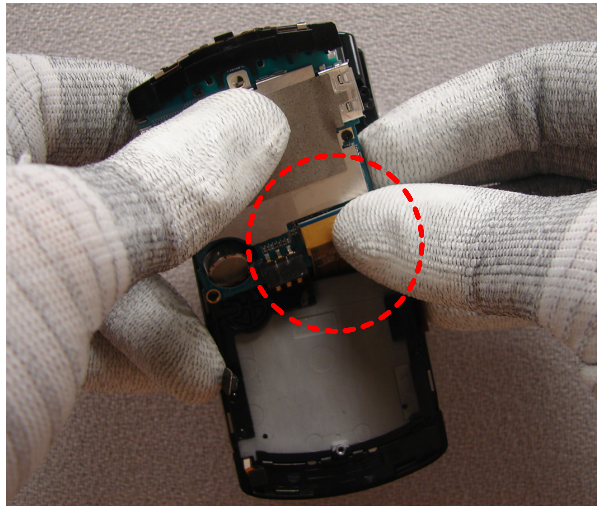
- 1) Assemble FRONT.  
 ※ **Caution**  
 1. Insert SLIDE FPCB to dashed insertion hole like upper picture.  
 2. Insert FRONT lower RIB under hinge and match the six screw joint positions.

9



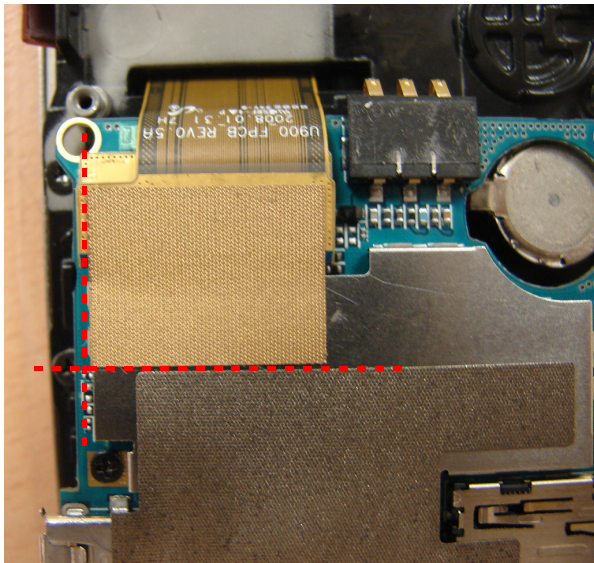
- 1) Screw six point to fix FRONT to LCD ASS'Y.  
 ※ **Caution**  
 1. Confirm screw size. (1.4\* 2.5mm)  
 2. Screw 6 points.

10



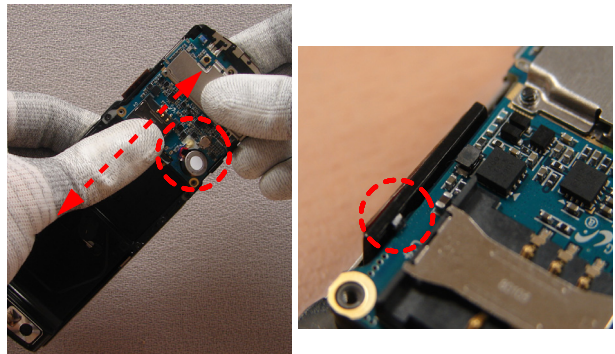
- 1) Combine PBA.  
 ※ **Caution**  
 1. When slide is closed, combine connector to PBA.  
 2. Fold SLIDE FPCB connector like image.

11



- 1) Attach connector gasket tape.  
 ※ **Caution**  
 1. Place the connector gasket tape aligned like picture.

12



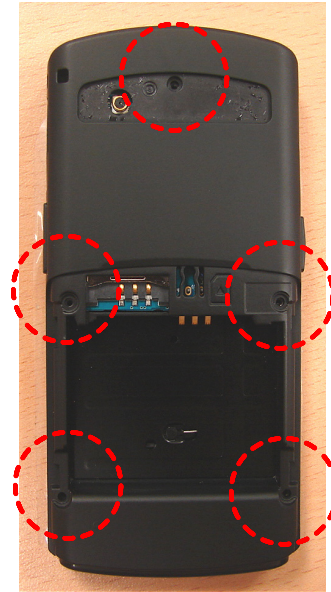
- 1) Put PBA.  
 ※ **Caution**  
 1. Open slide and place the PBA.  
 2. Combine left side HOOK.  
 3. Place the Vibration motor in PBA hole.

13



- 1) Combine REAR COVER.  
 ※ **Caution**  
 1. Combine both side HOOK from bottom.

14



- 1) Screw REAR COVER.  
 ※ **Caution**  
 1. Confirm screw size.(1.4\* 3.5mm)  
 2. Screw 5 points.