

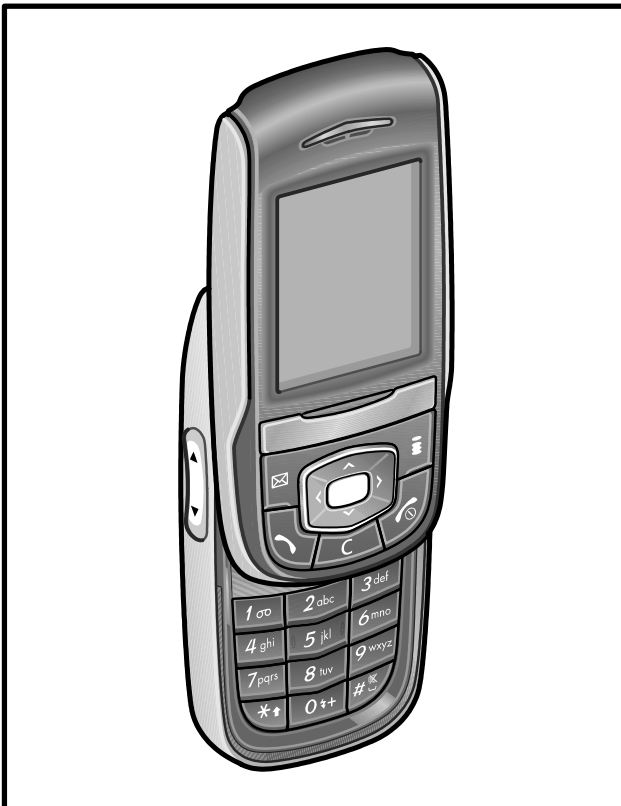
SAMSUNG

I-mode TELEPHONE

SGH-S400i

SERVICE *Manual*

I-mode TELEPHONE



CONTENTS

1. Specification
2. Flow Chart of Troubleshooting
3. Exploded View and Parts List
4. MAIN Electrical Parts List
5. PCB Diagrams
6. Block Diagrams

1. SGH-S400i Specification

1-1. GSM General Specification

		GSM 900	DCS1800	PCS1900
Freq. Band[MHz] Uplink/Downlink		880~915 925~960	1710~1785 1805~1880	1850~1910 1930~1990
ARFCN range		0~124 & 975~1023	512~885	512~810
Tx/Rx spacing		45MHz	95MHz	80MHz
Mod. Bit rate/ Bit Period	GPRS	270.833Kbps 3.692us	270.833Kbps 3.692us	270.833Kbps 3.692us
	EDGE	812.5Kbps 3.692us	812.5Kbps 3.692us	812.5Kbps 3.692us
Time Slot Period/Frame Period		576.9us 4.615ms	576.9us 4.615ms	576.9us 4.615ms
Modulation	GPRS	0.3GMSK	0.3GMSK	0.3GMSK
	EDGE	8PSK	8PSK	8PSK
MS Power	GPRS	33dBm~5dBm	30dBm~0dBm	30dBm~0dBm
	EDGE	27~5dBm	26~0dBm	26~0dBm
Power Level	GPRS	5pcl~19pcl	0pcl~15pcl	0pcl~15pcl
	EDGE	8~19(class E2)	2~15(class E2)	2~15(class E2)
Sensitivity		-102dBm	-100dBm	-102dBm
TDMA Mux		8	8	8
Cell Radius		35Km	2Km	2Km

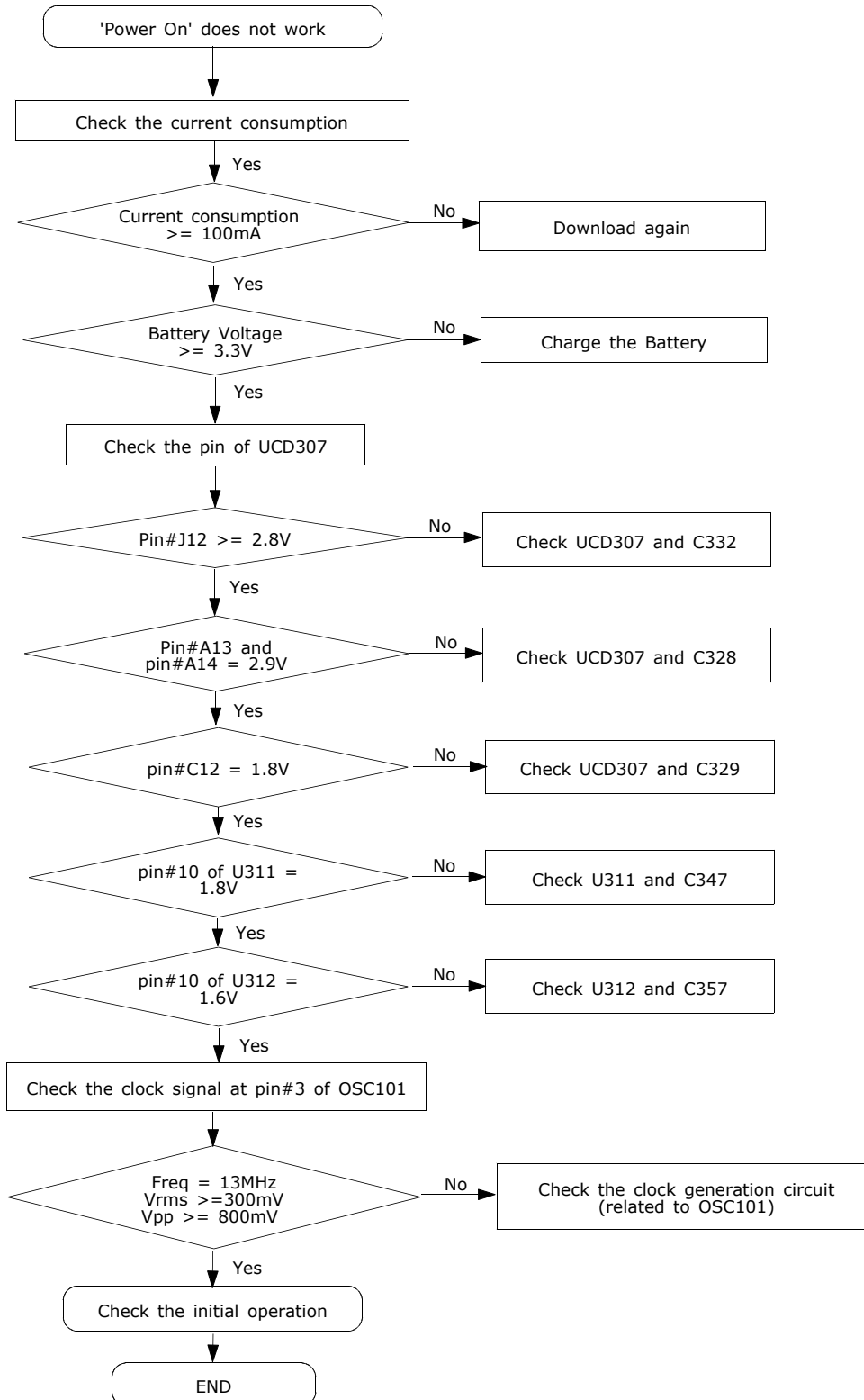
1-2. GSM TX power class

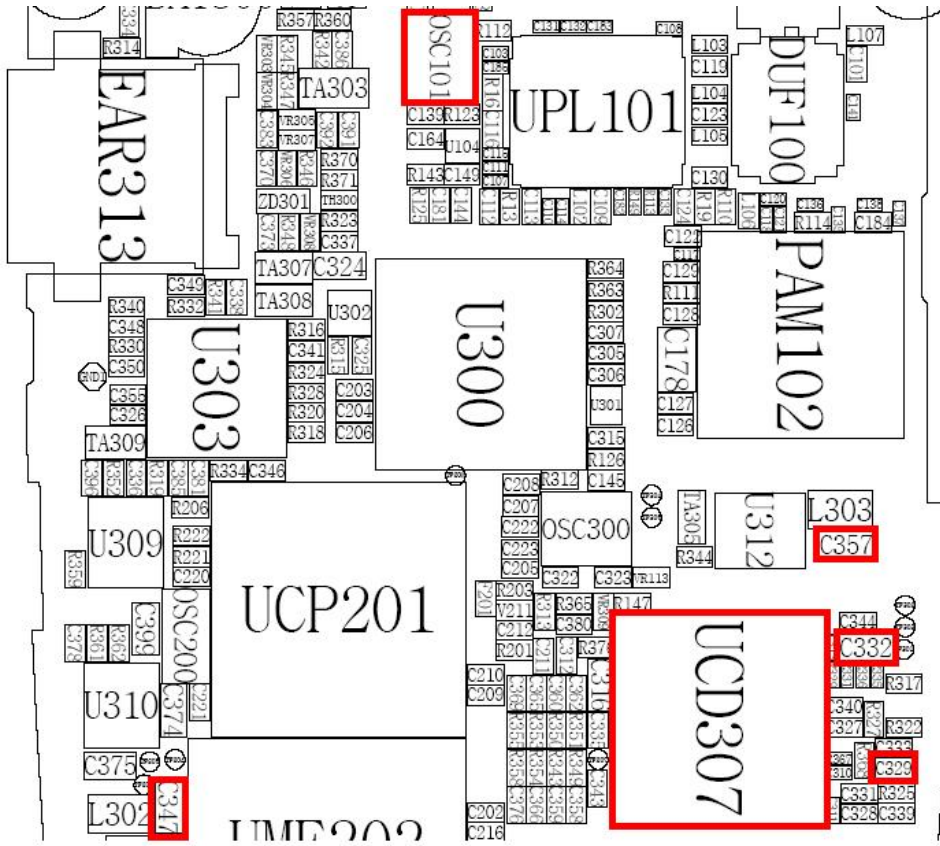
TX Power control level	GSM900	TX Power control level	DCS1800	TX Power control level	PCS1900
5	33±2dBm	0	30±2dBm	0	30±2dBm
6	31±3dBm	1	28±3dBm	1	28±3dBm
7	29±3dBm	2	26±3dBm	2	26±3dBm
8	27±3dBm	3	24±3dBm	3	24±3dBm
9	25±3dBm	4	22±3dBm	4	22±3dBm
10	23±3dBm	5	20±3dBm	5	20±3dBm
11	21±3dBm	6	18±3dBm	6	18±3dBm
12	19±3dBm	7	16±3dBm	7	16±3dBm
13	17±3dBm	8	14±3dBm	8	14±3dBm
14	15±3dBm	9	12±4dBm	9	12±4dBm
15	13±3dBm	10	10±4dBm	10	10±4dBm
16	11±5dBm	11	8±4dBm	11	8±4dBm
17	9±5dBm	12	6±4dBm	12	6±4dBm
18	7±5dBm	13	4±4dBm	13	4±4dBm
19	5±5dBm	14	2±5dBm	14	2±5dBm
		15	0±5dBm	15	0±5dBm

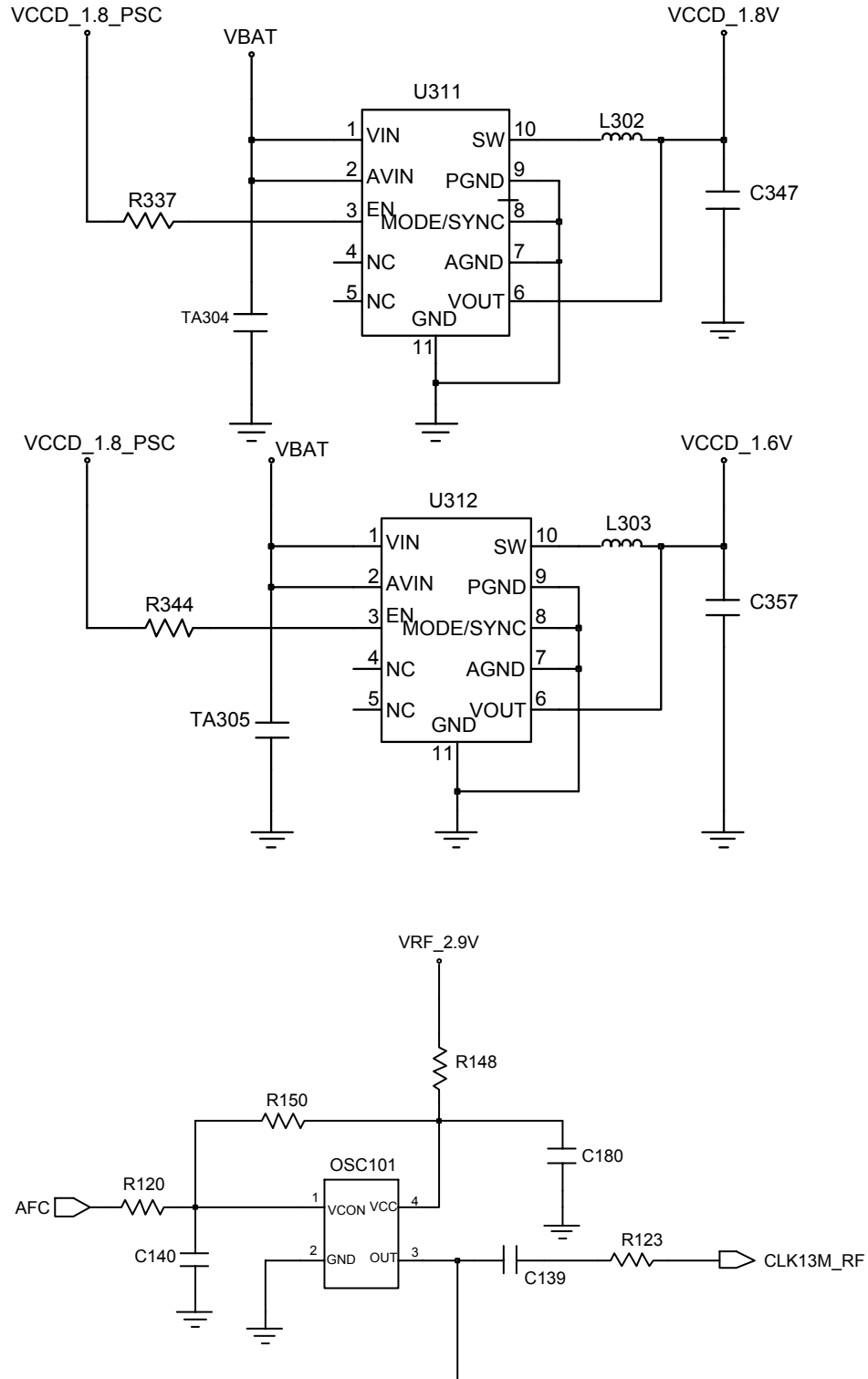
2. SGH-S400i Flow Chart of Troubleshooting

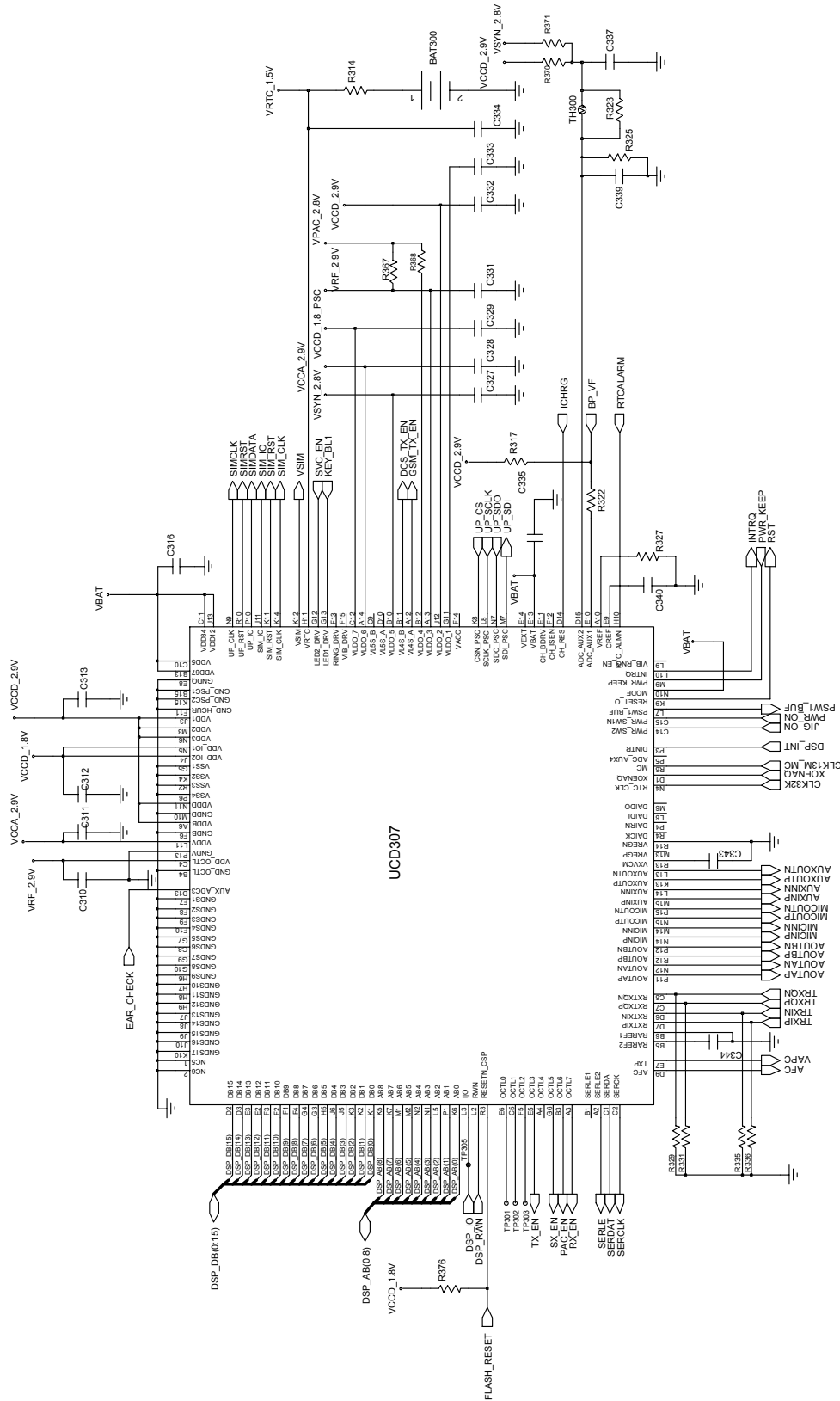
2-1.Baseband

2-1-1. Power ON

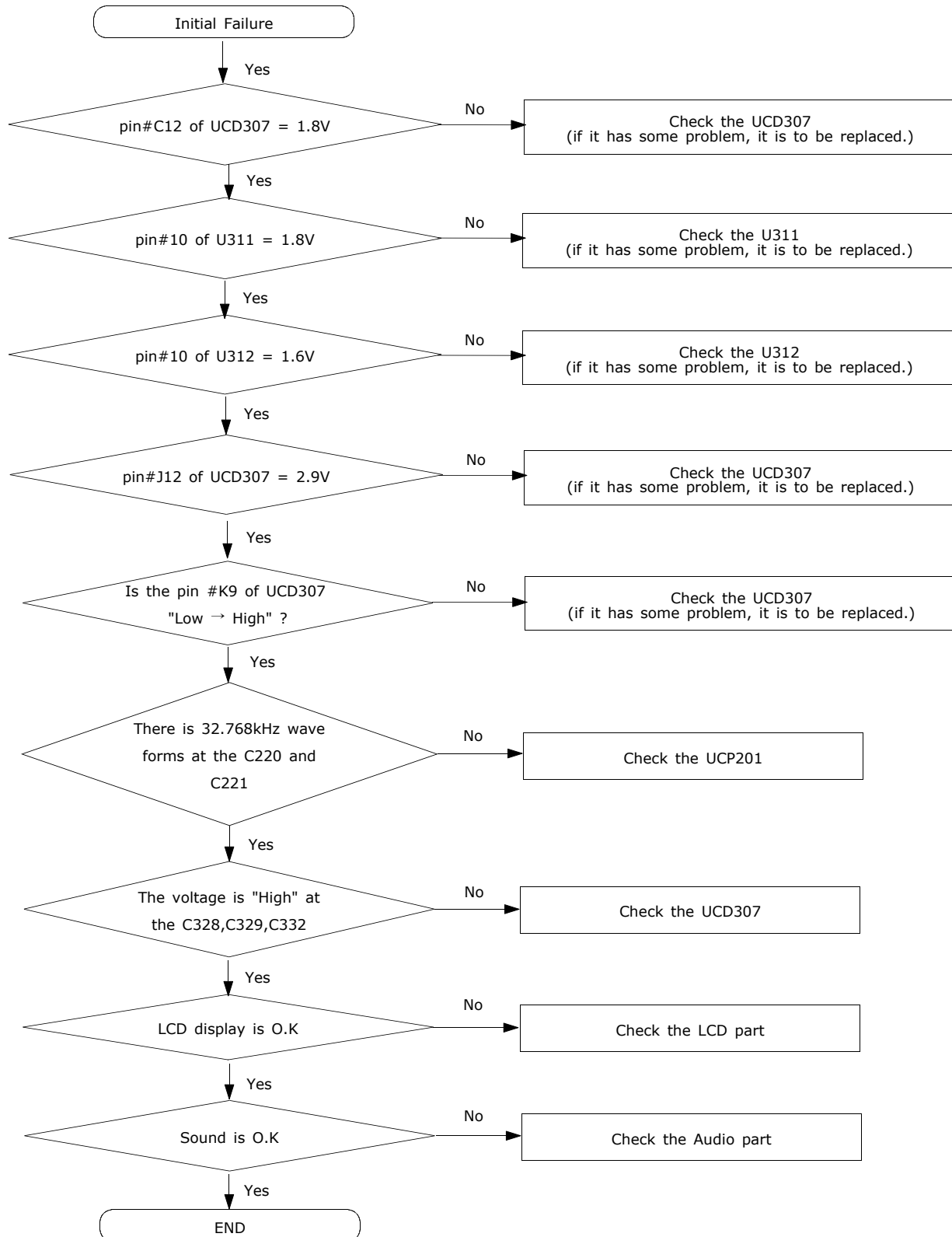


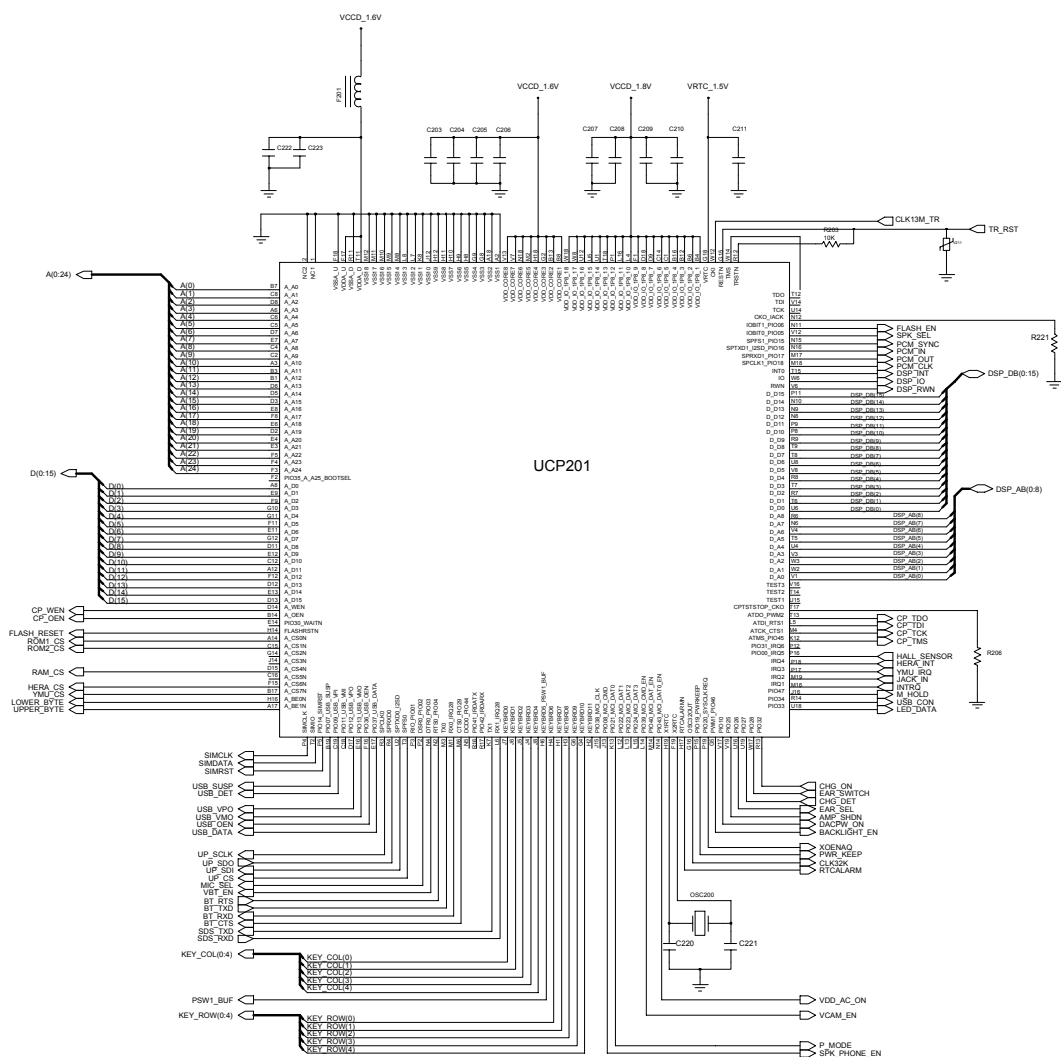
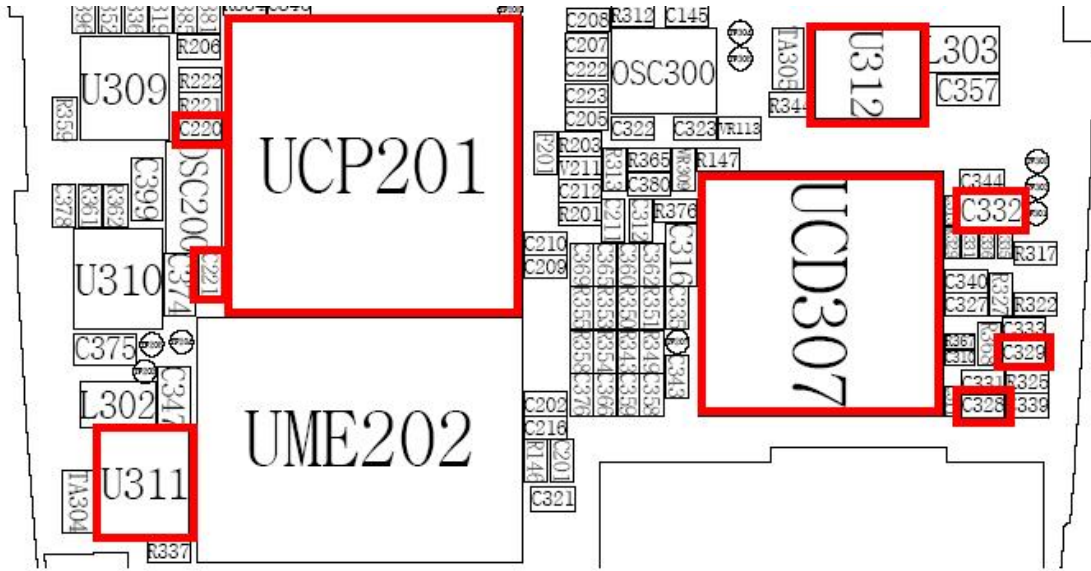




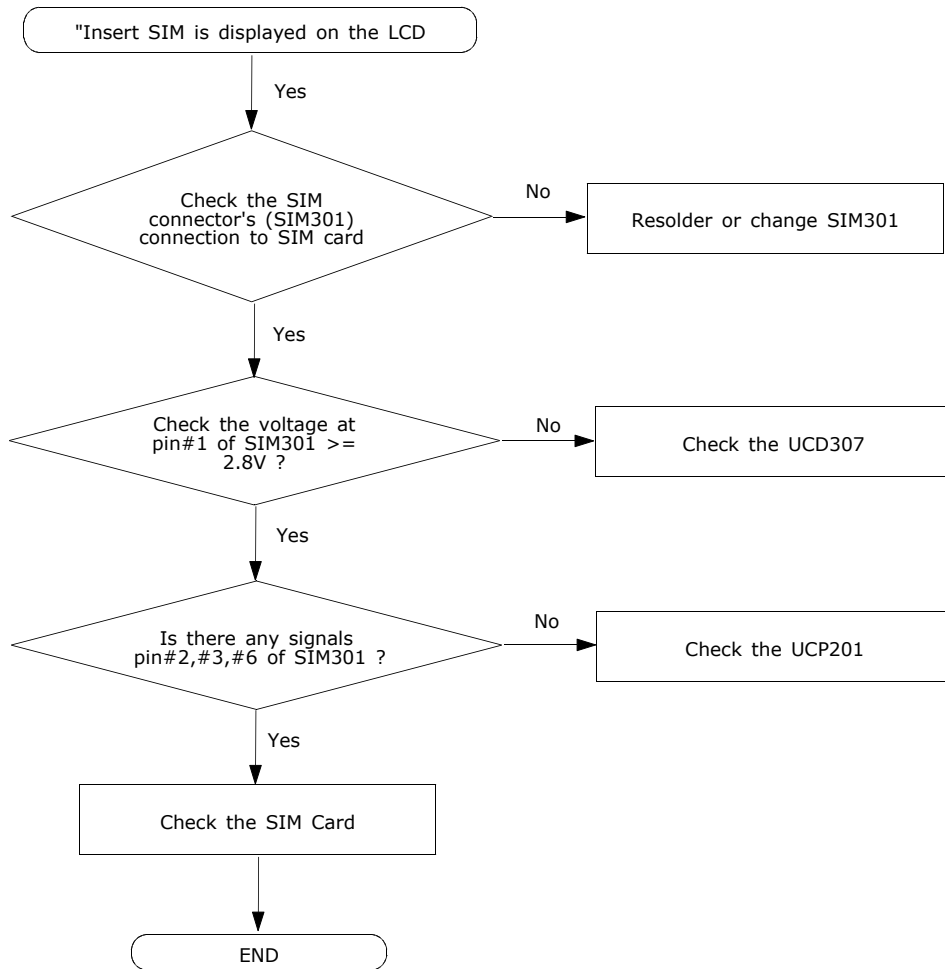


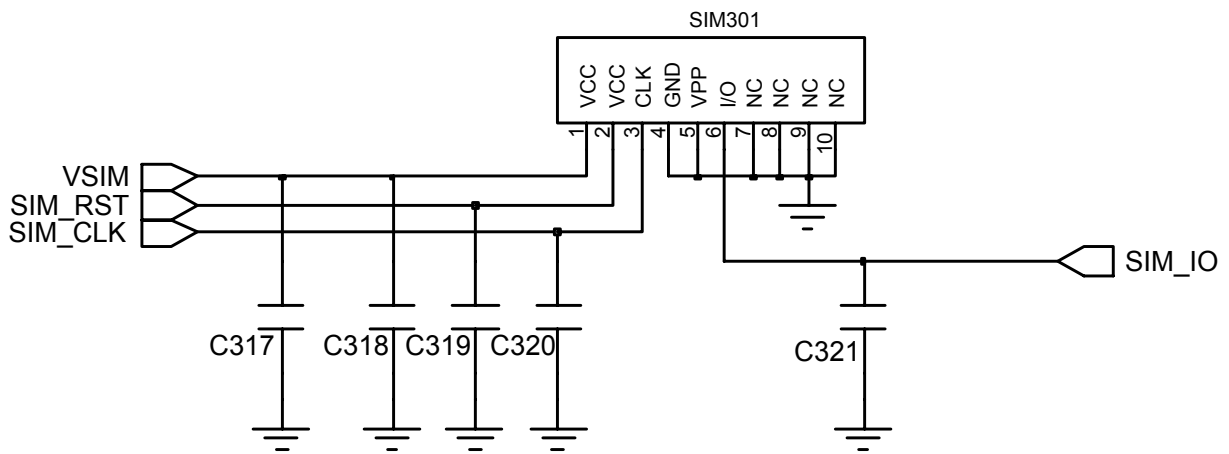
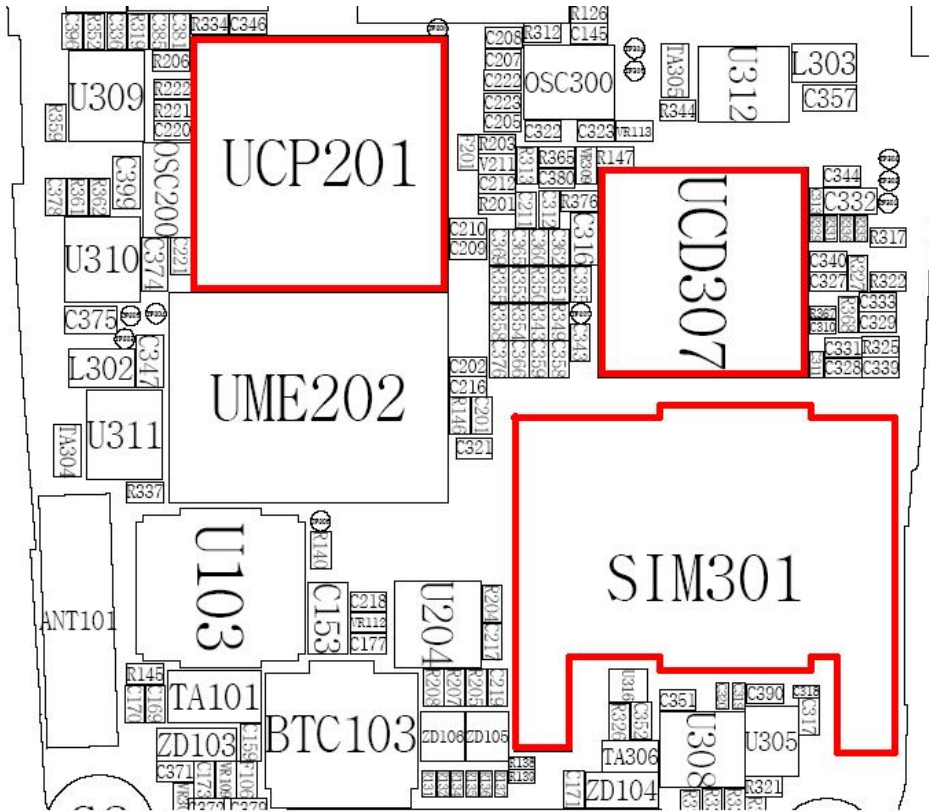
2-1-2. Initial



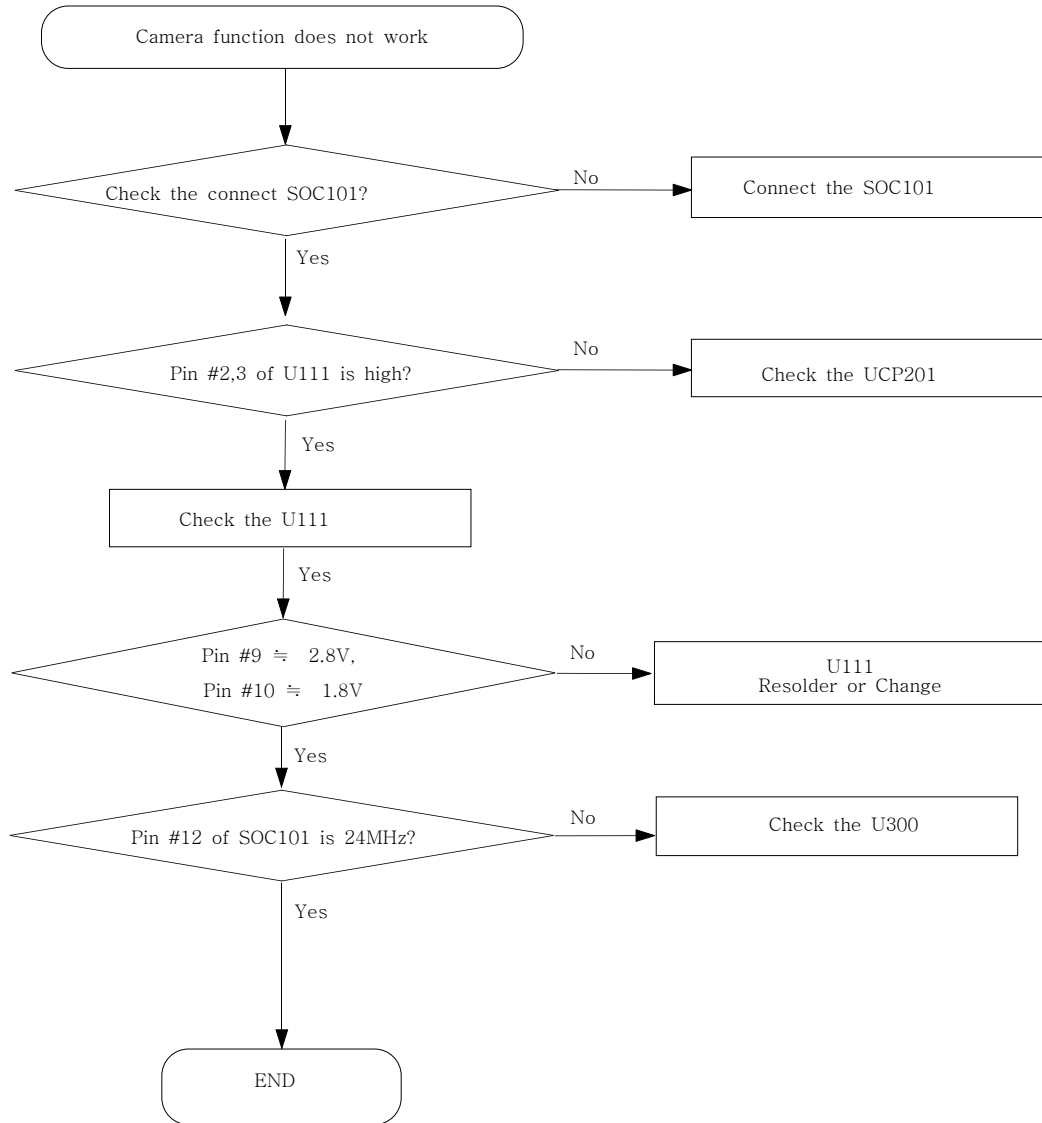


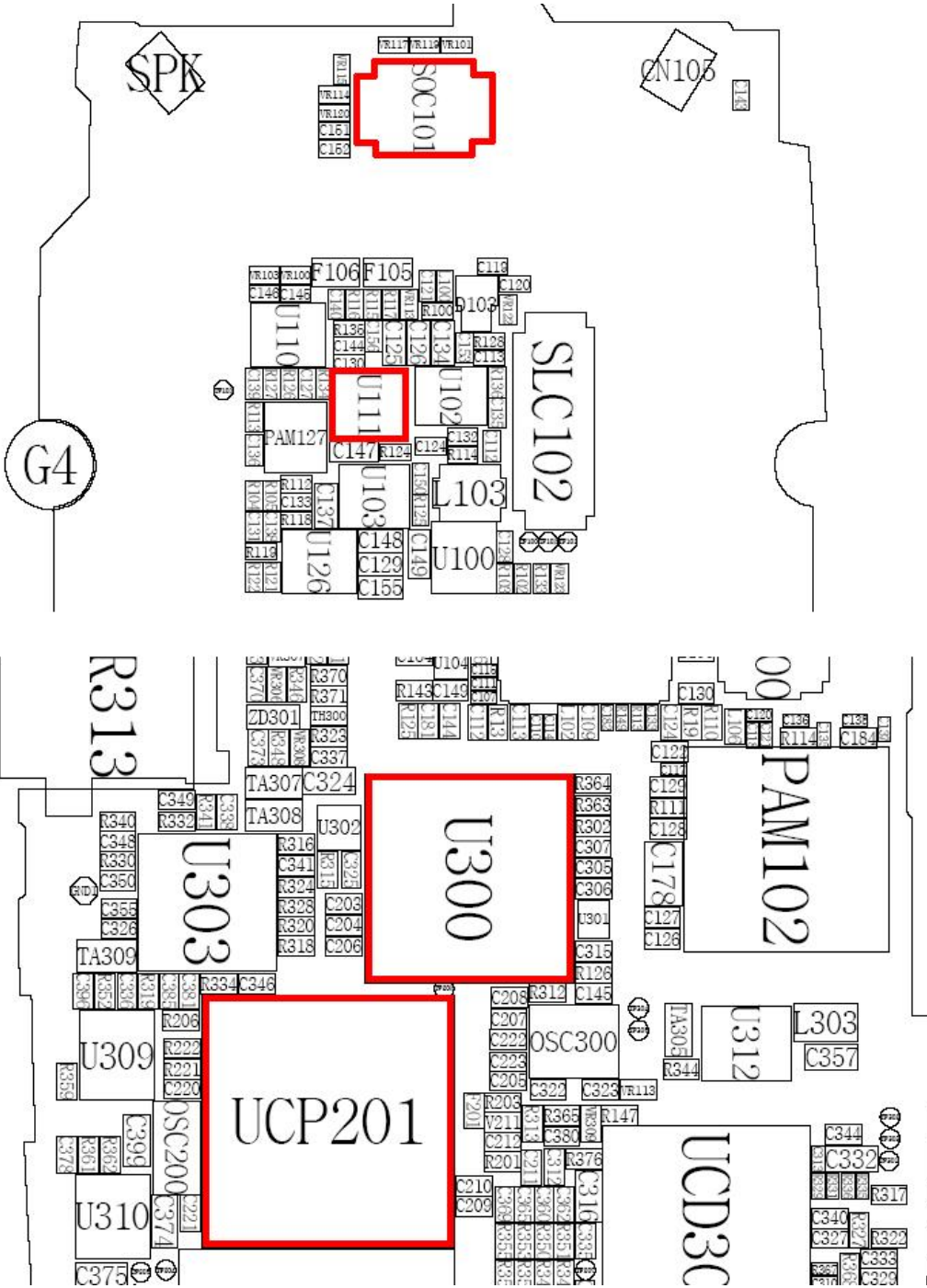
2-1-3. Sim Part

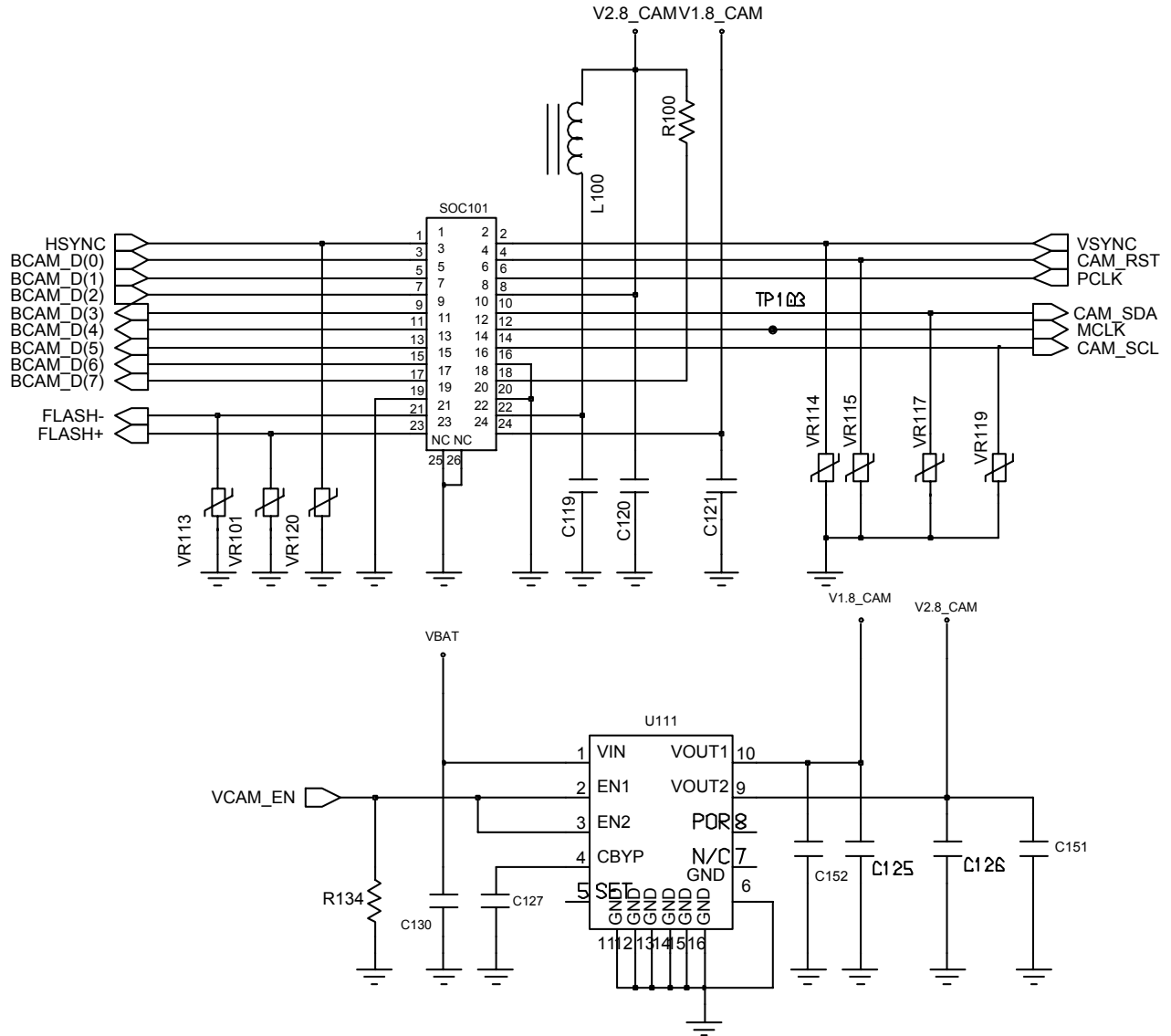




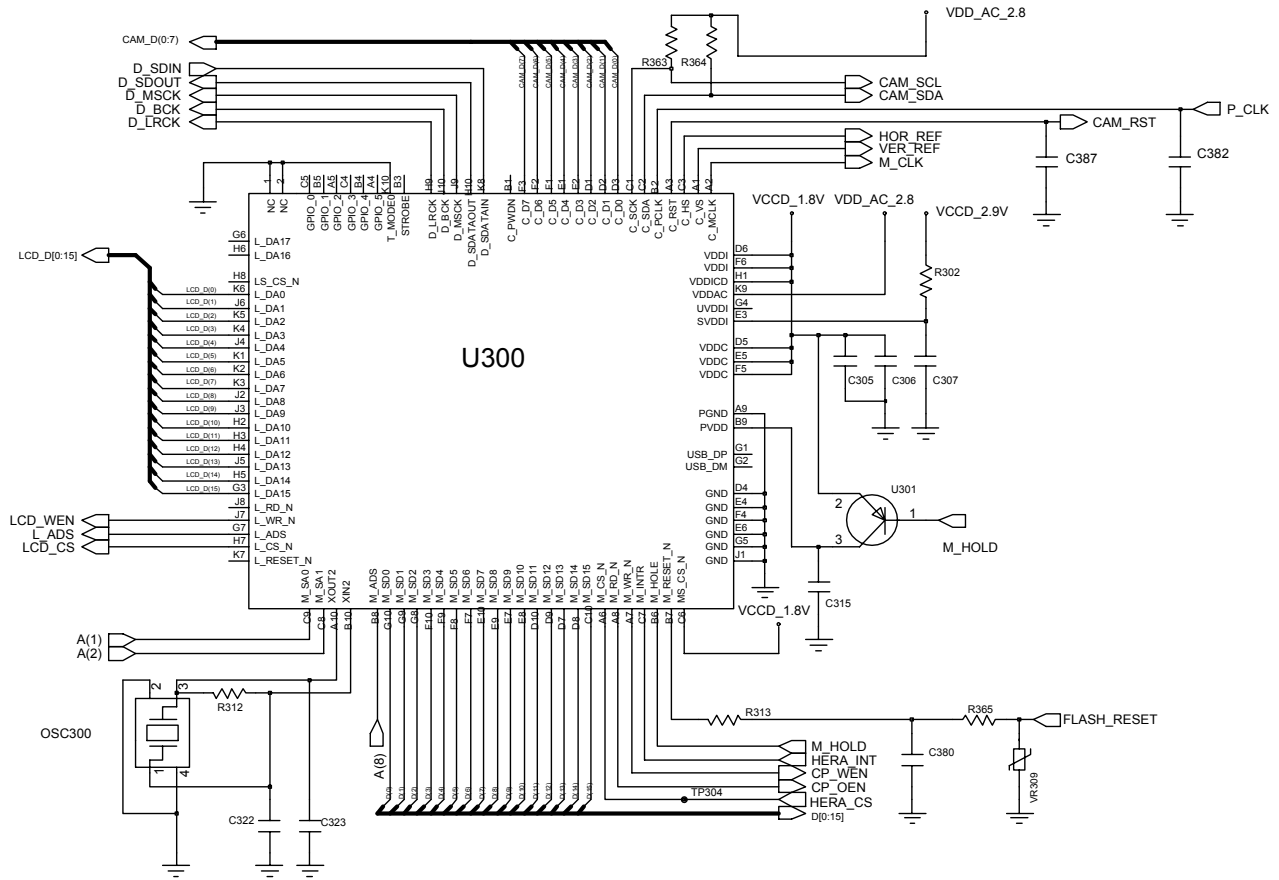
2-1-4. Camera Part



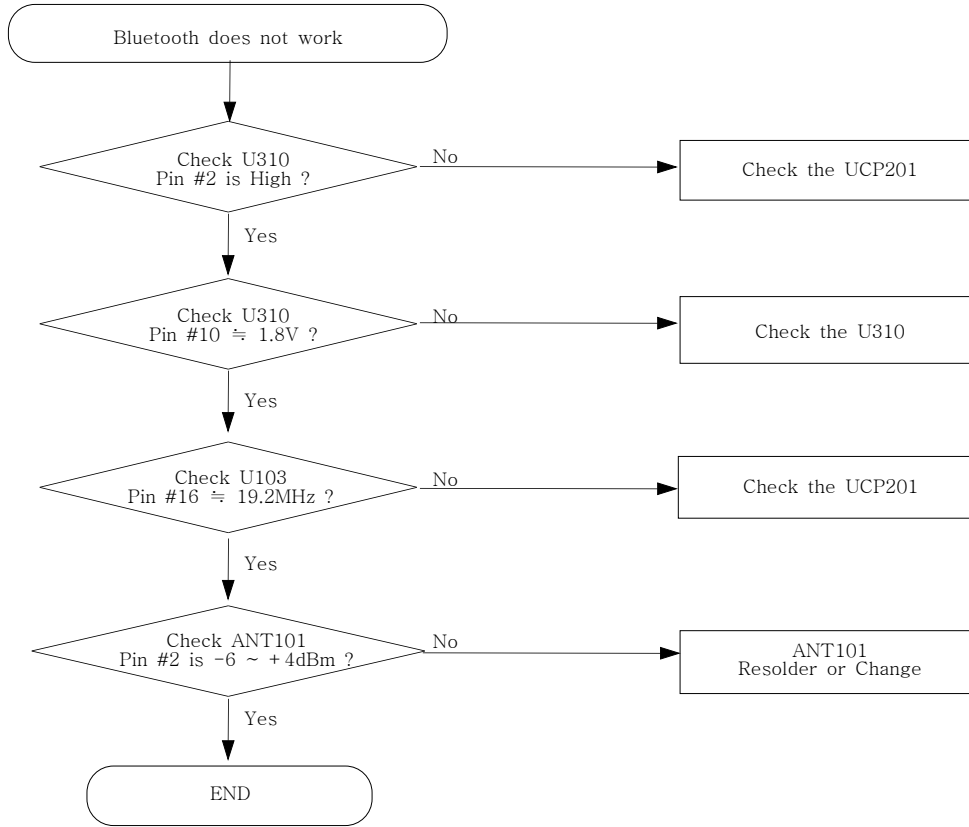


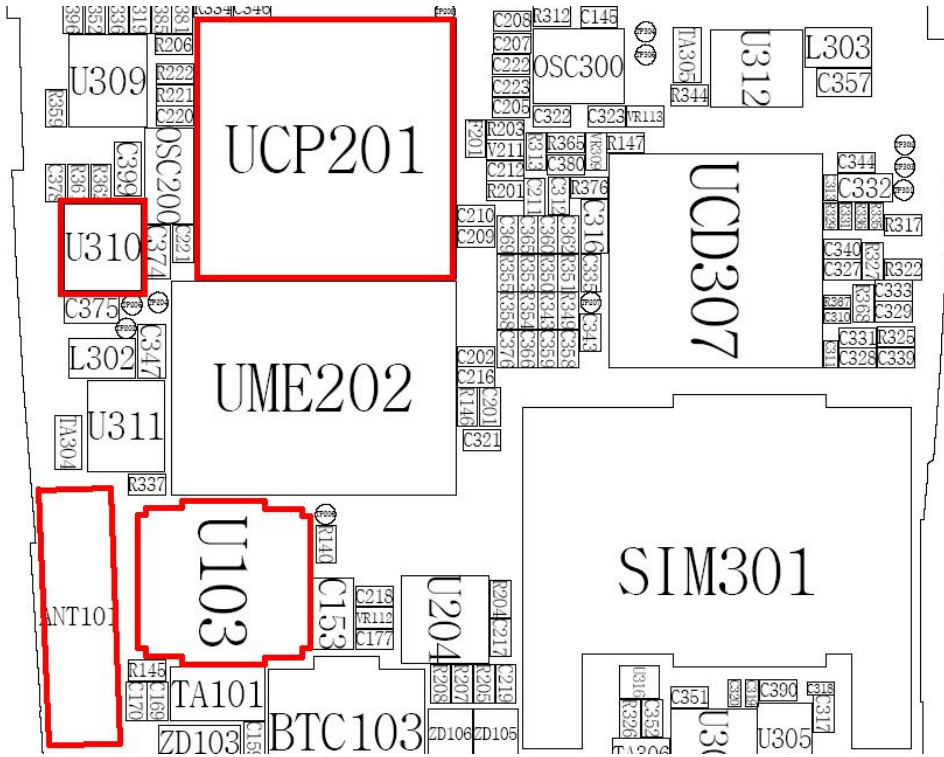


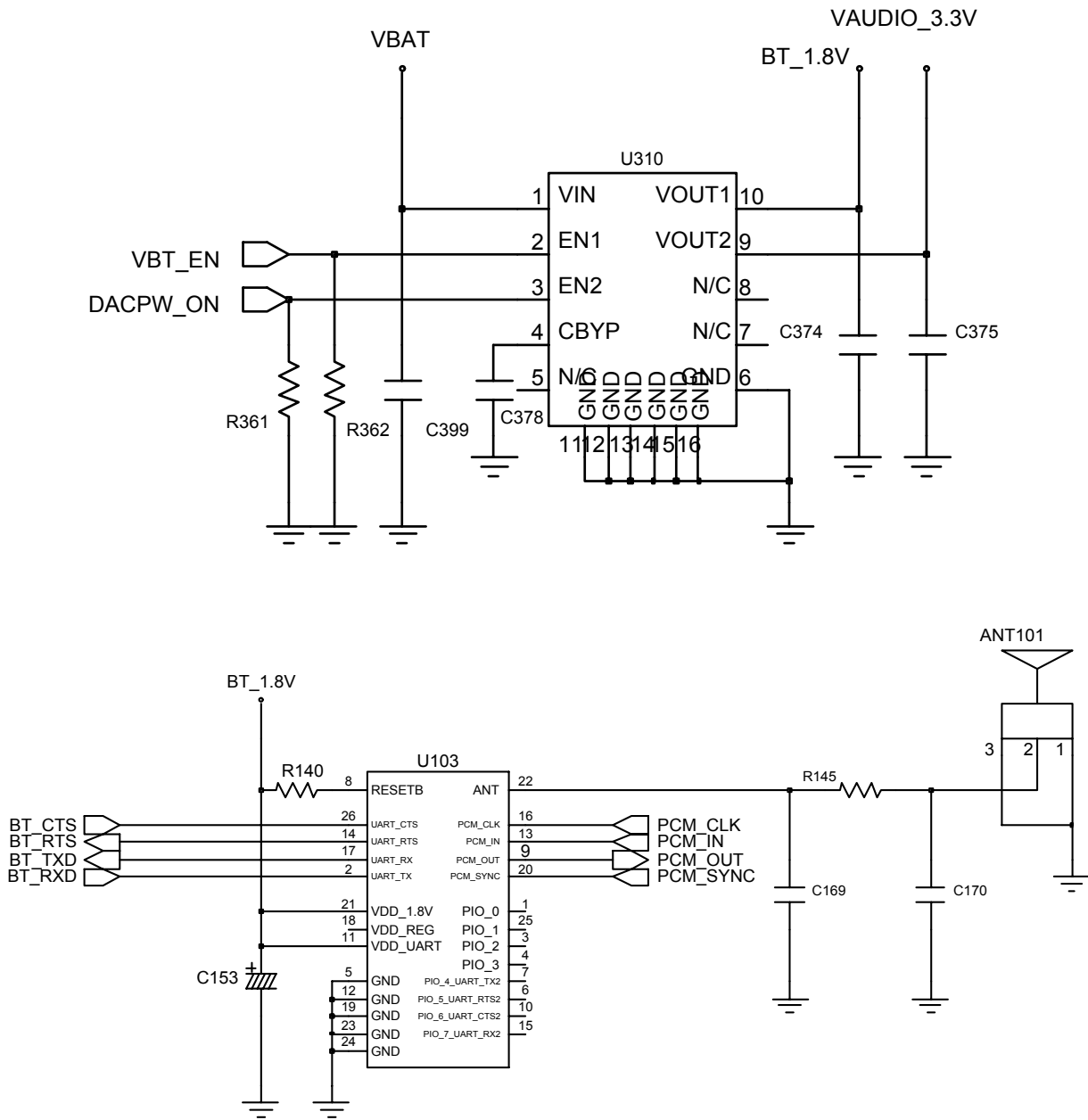
SGH-S400i Flow Chart of Troubleshooting



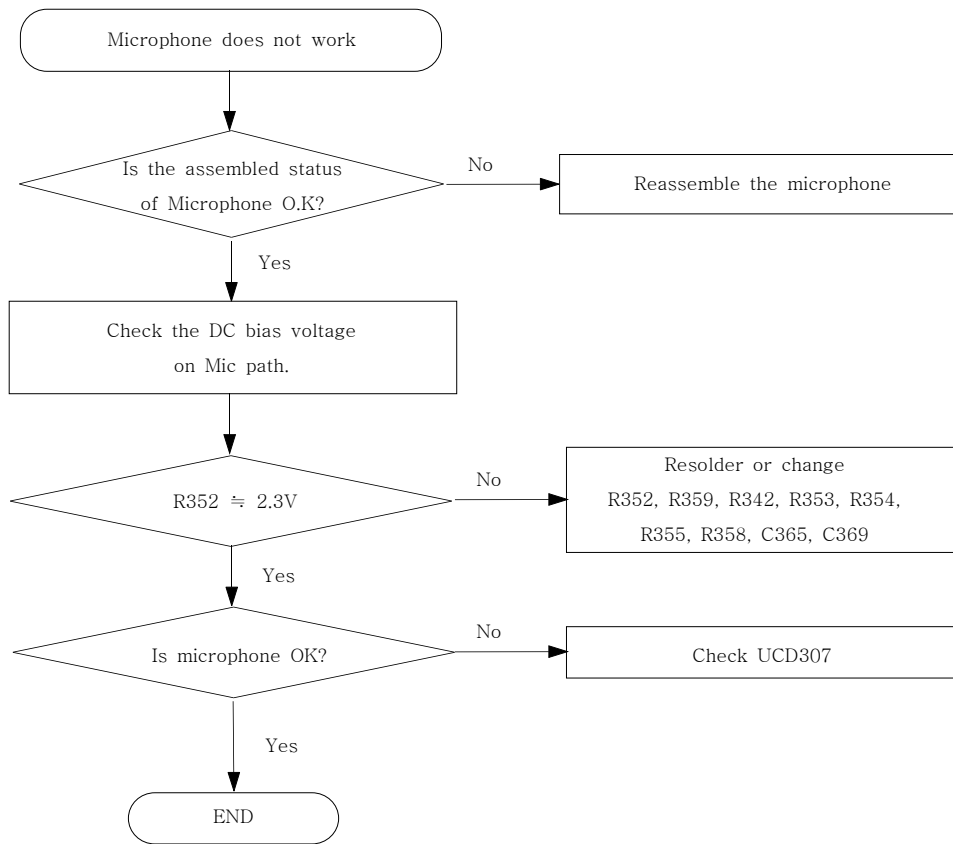
2-1-5. Bluetooth Part

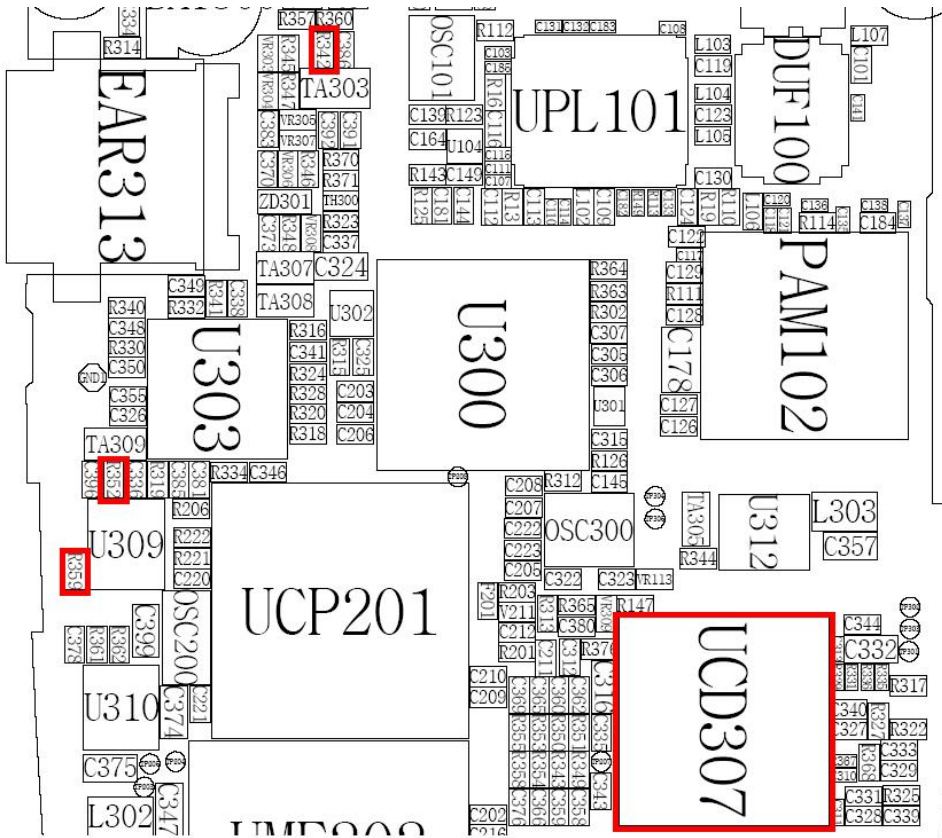


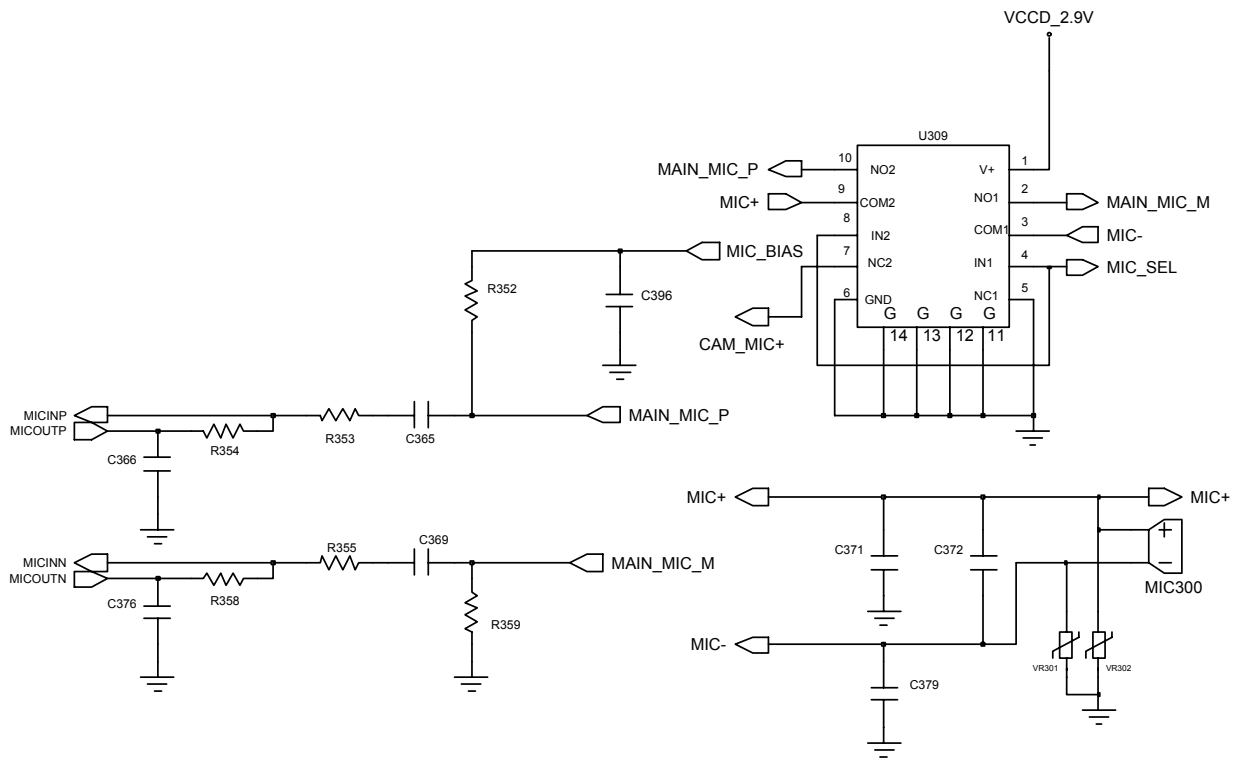




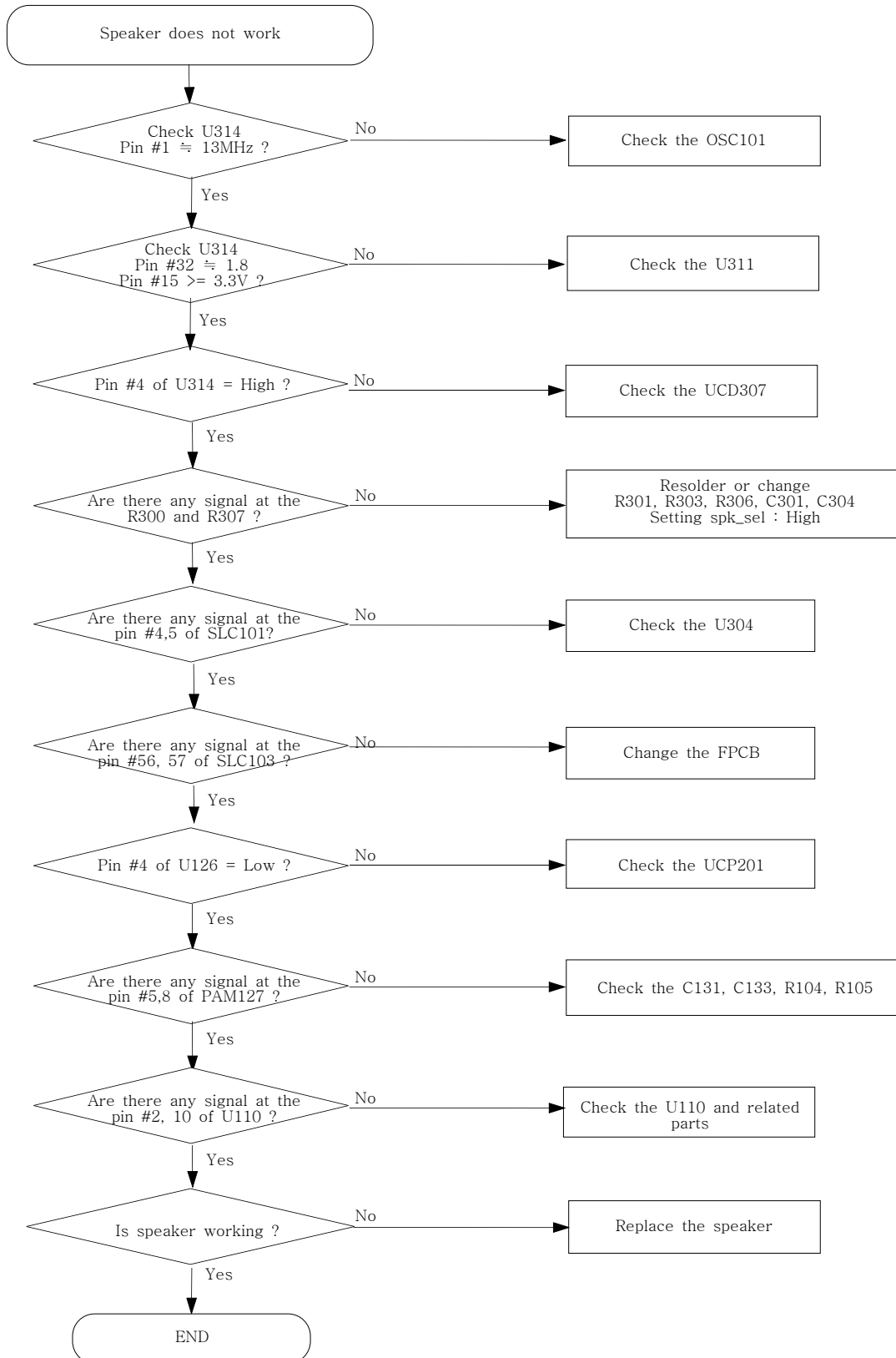
2-1-6. Microphone Part

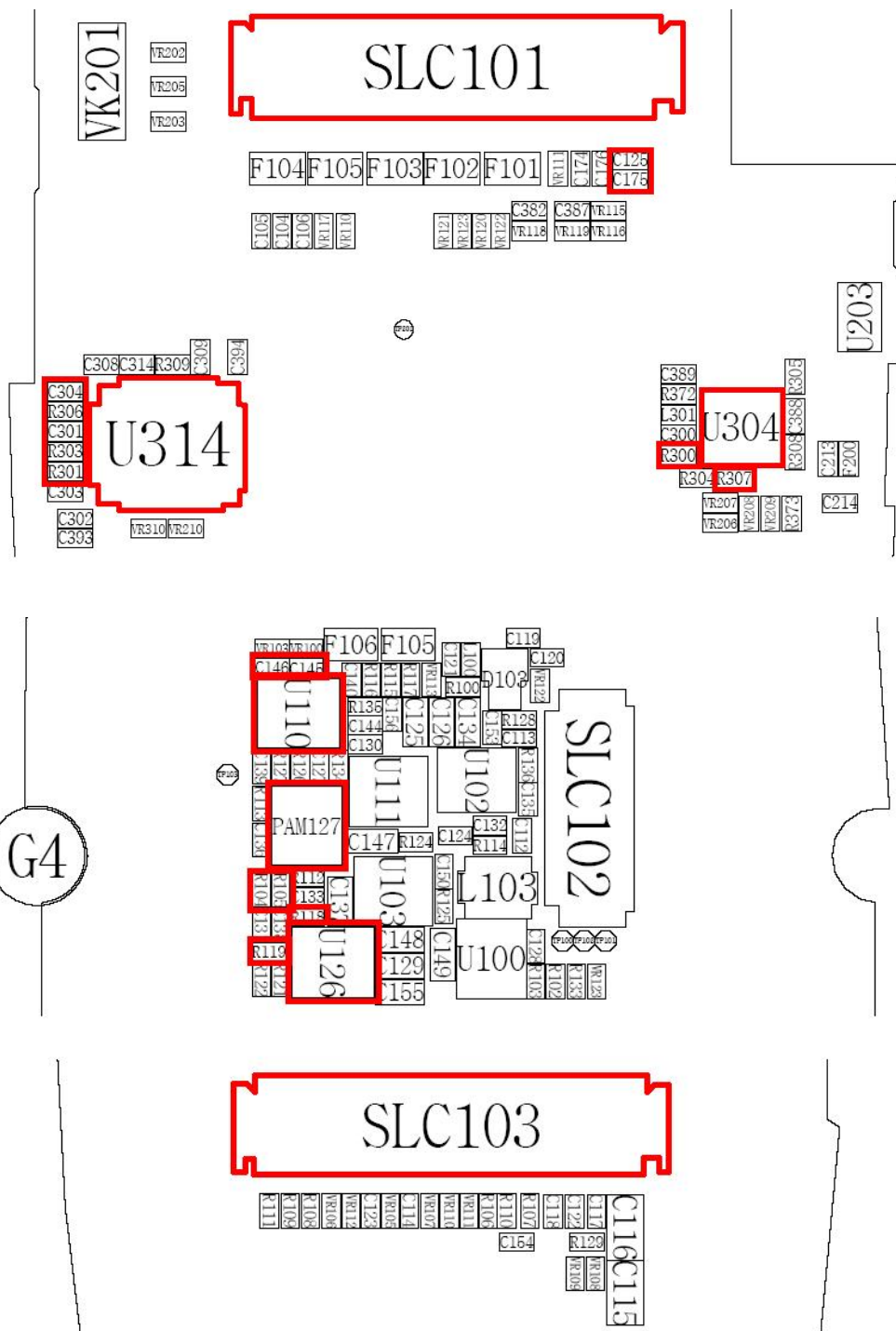


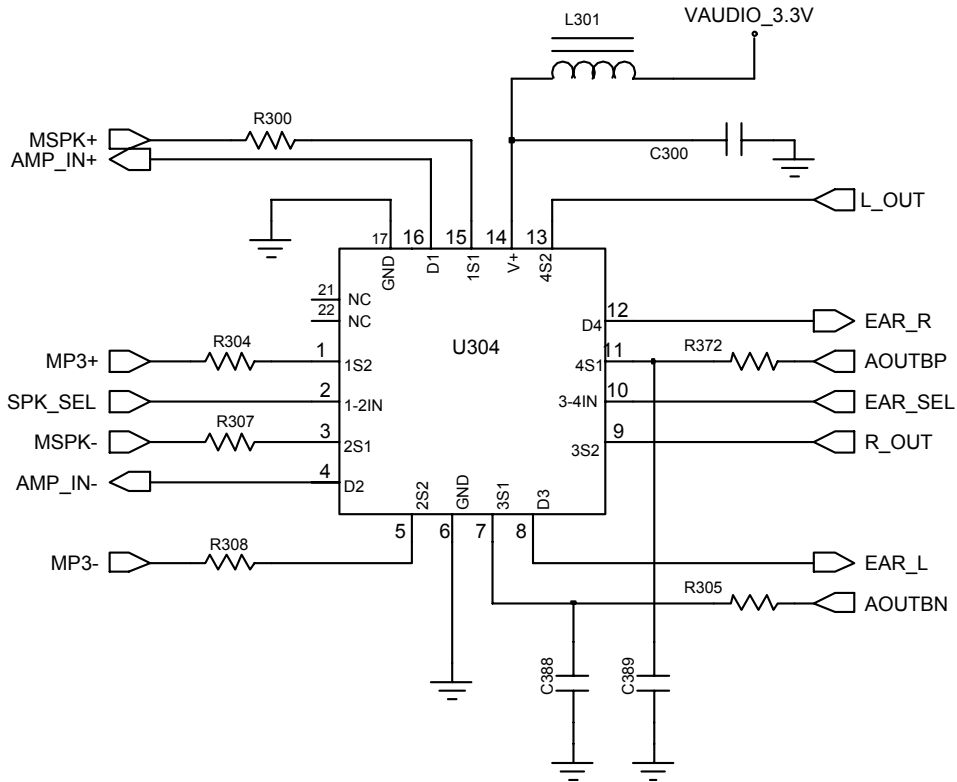
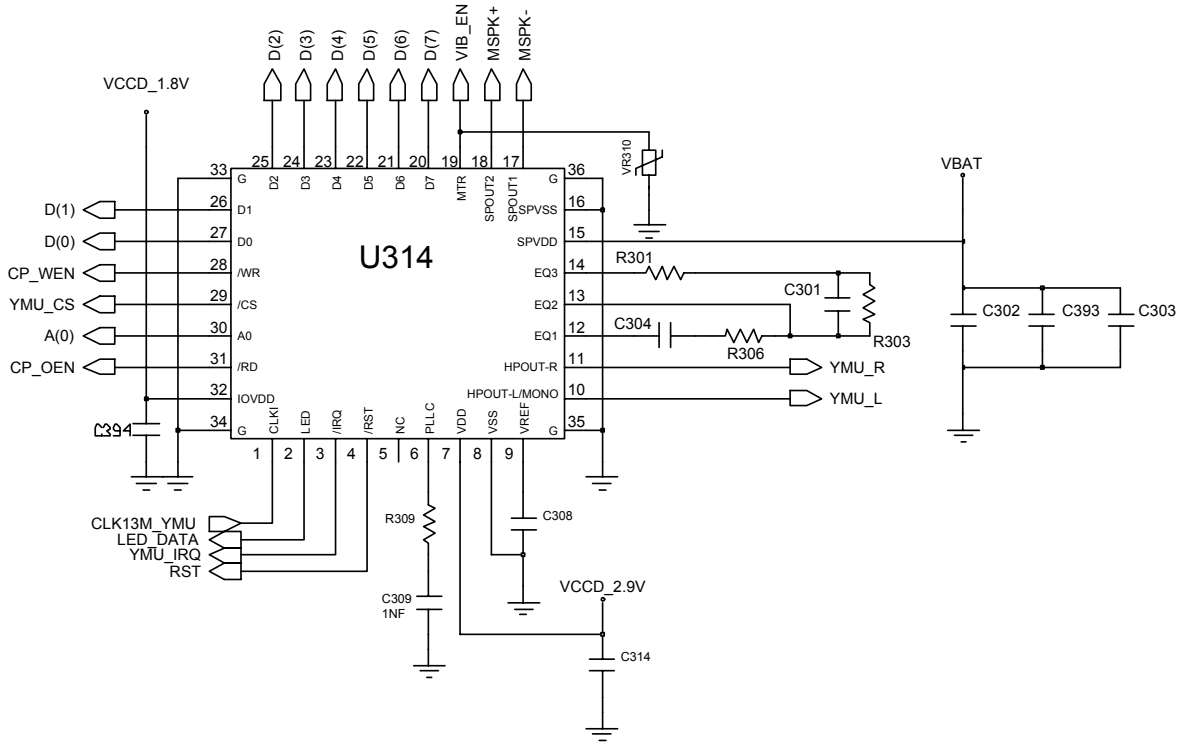


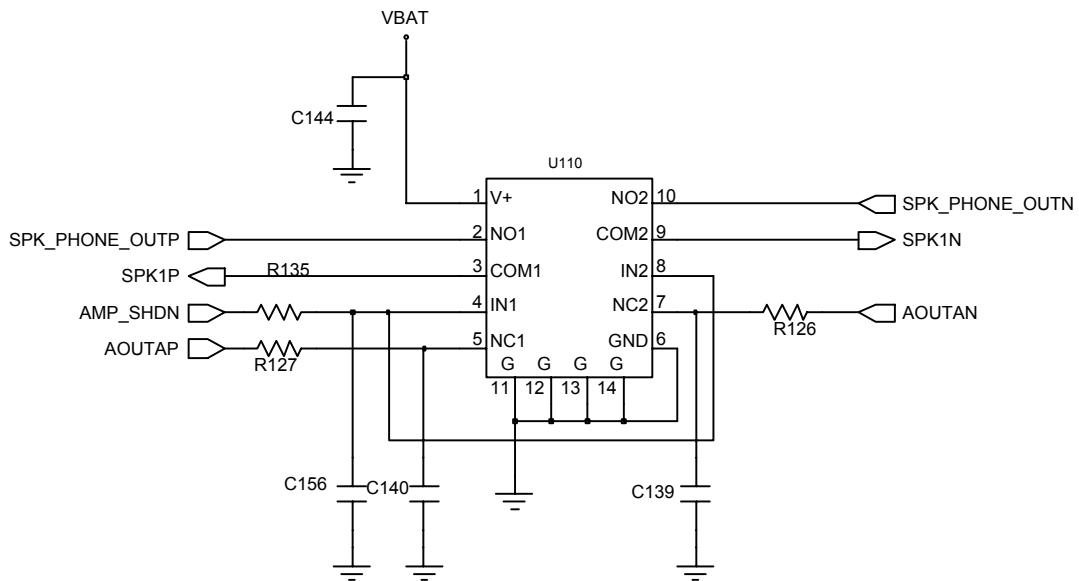
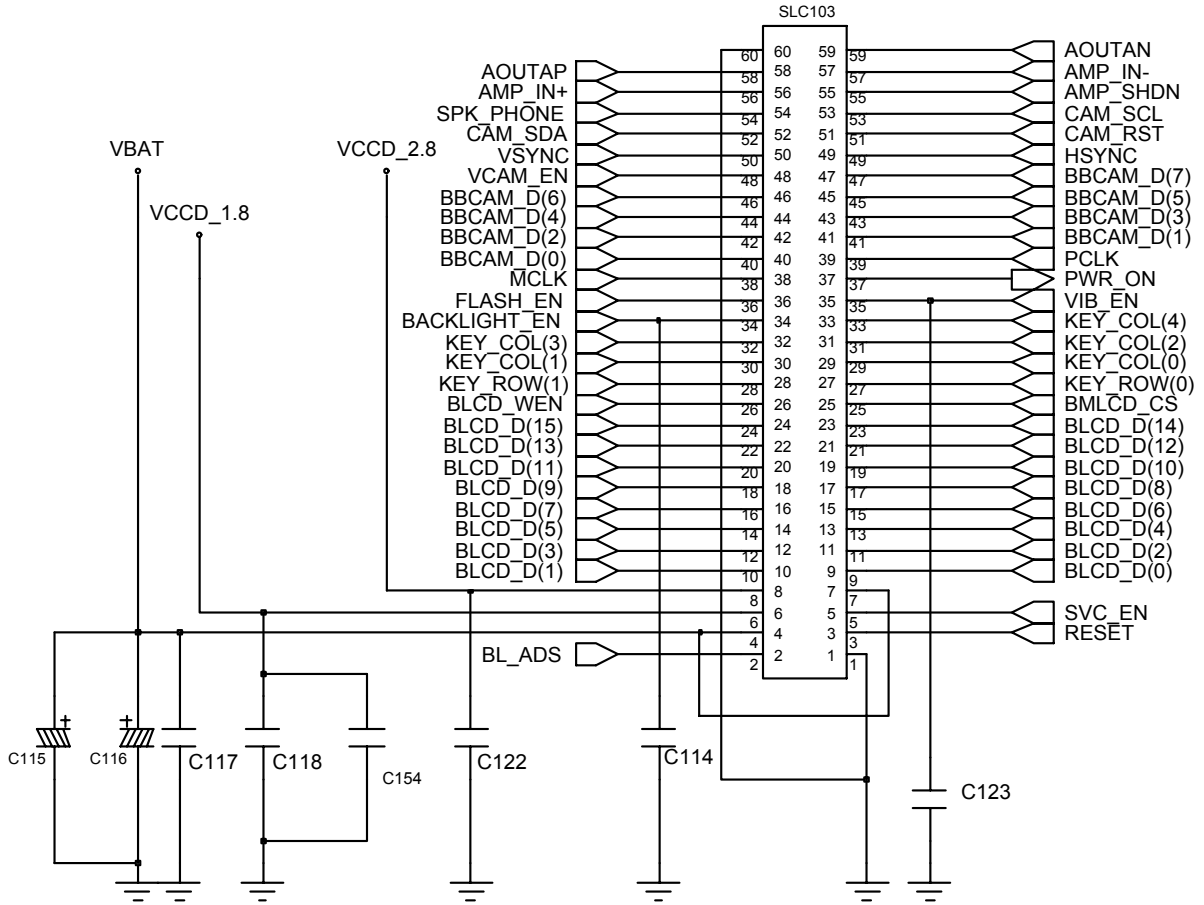


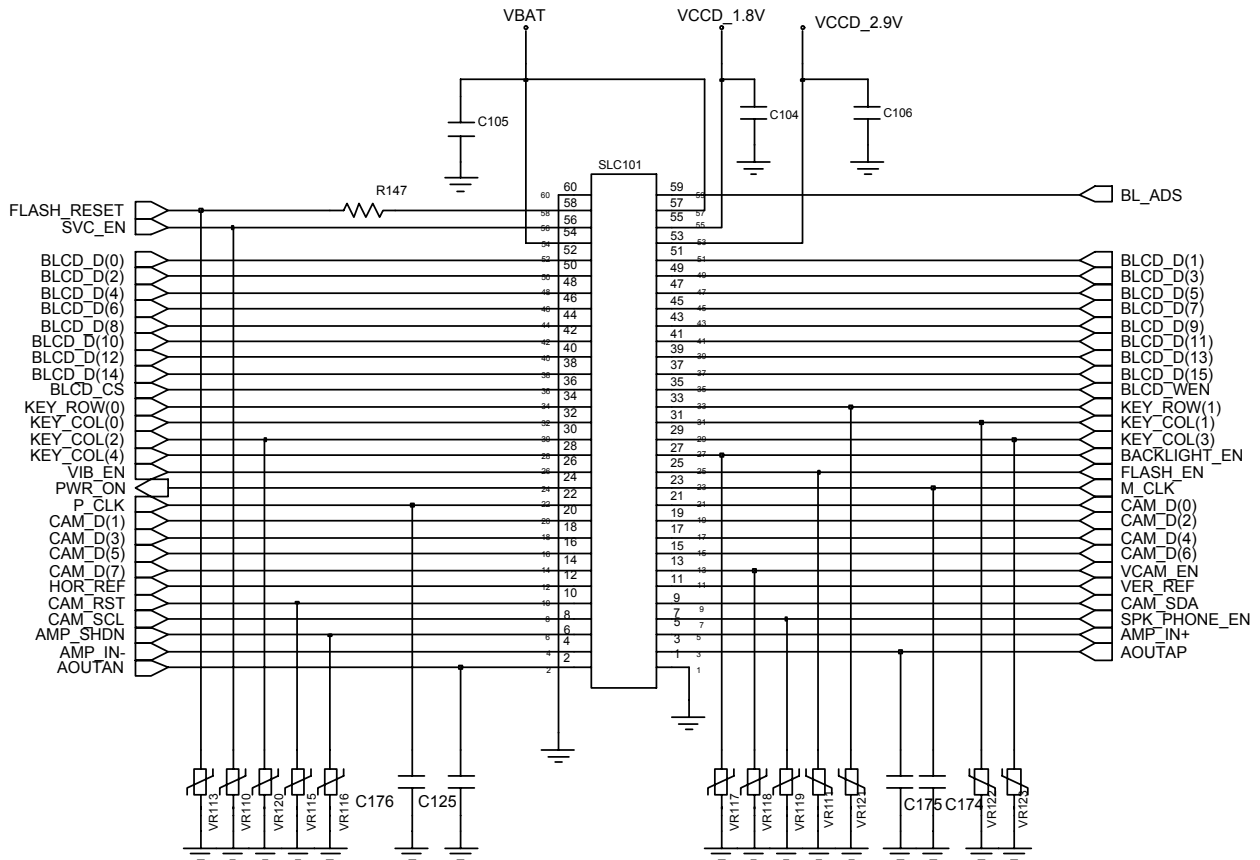
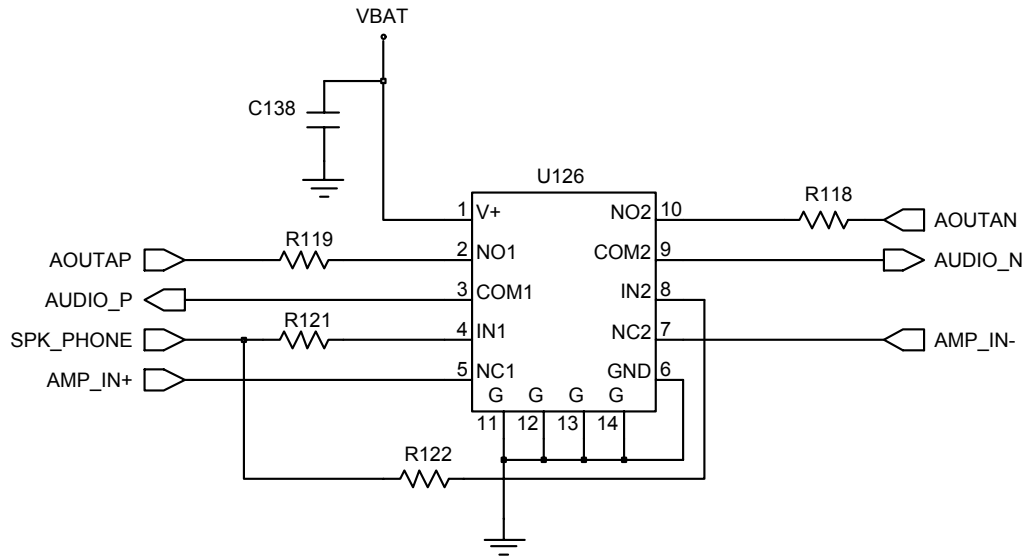
2-1-7. Speaker Part

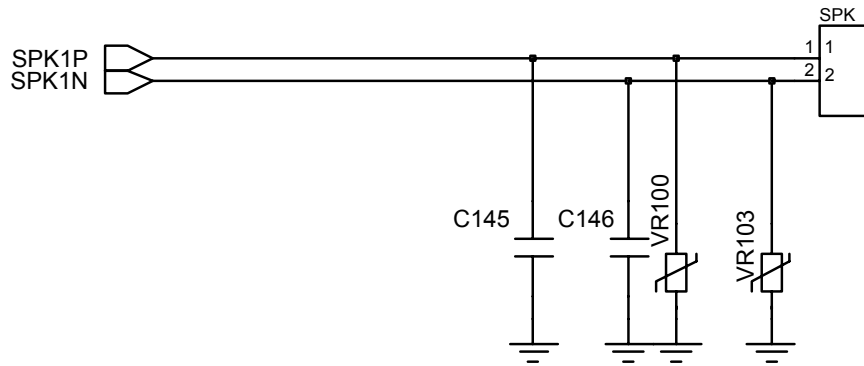
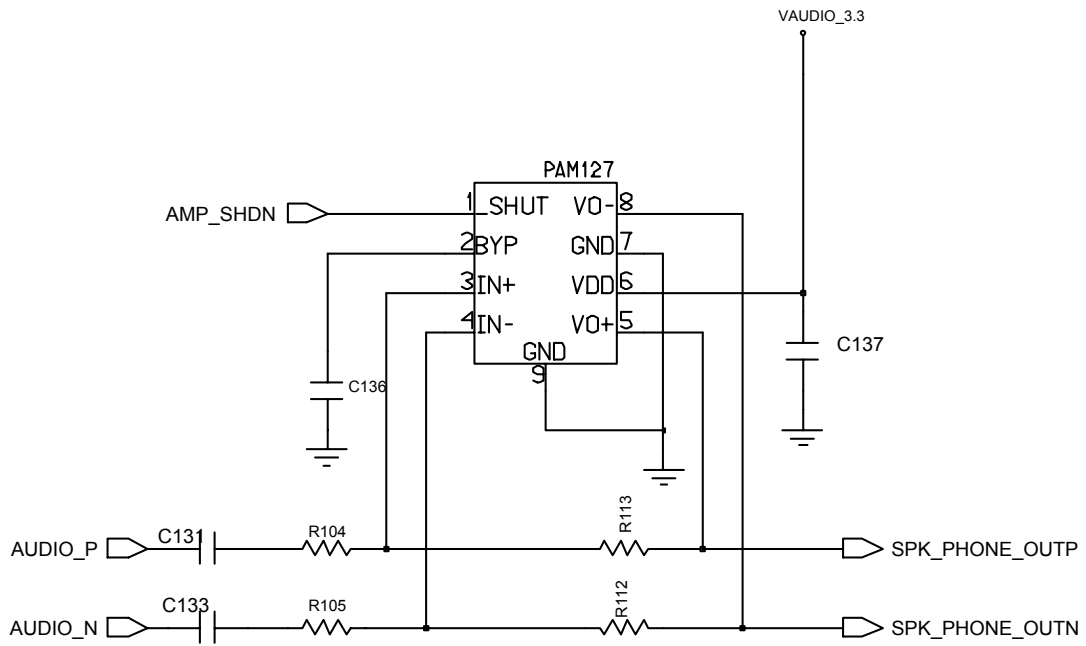




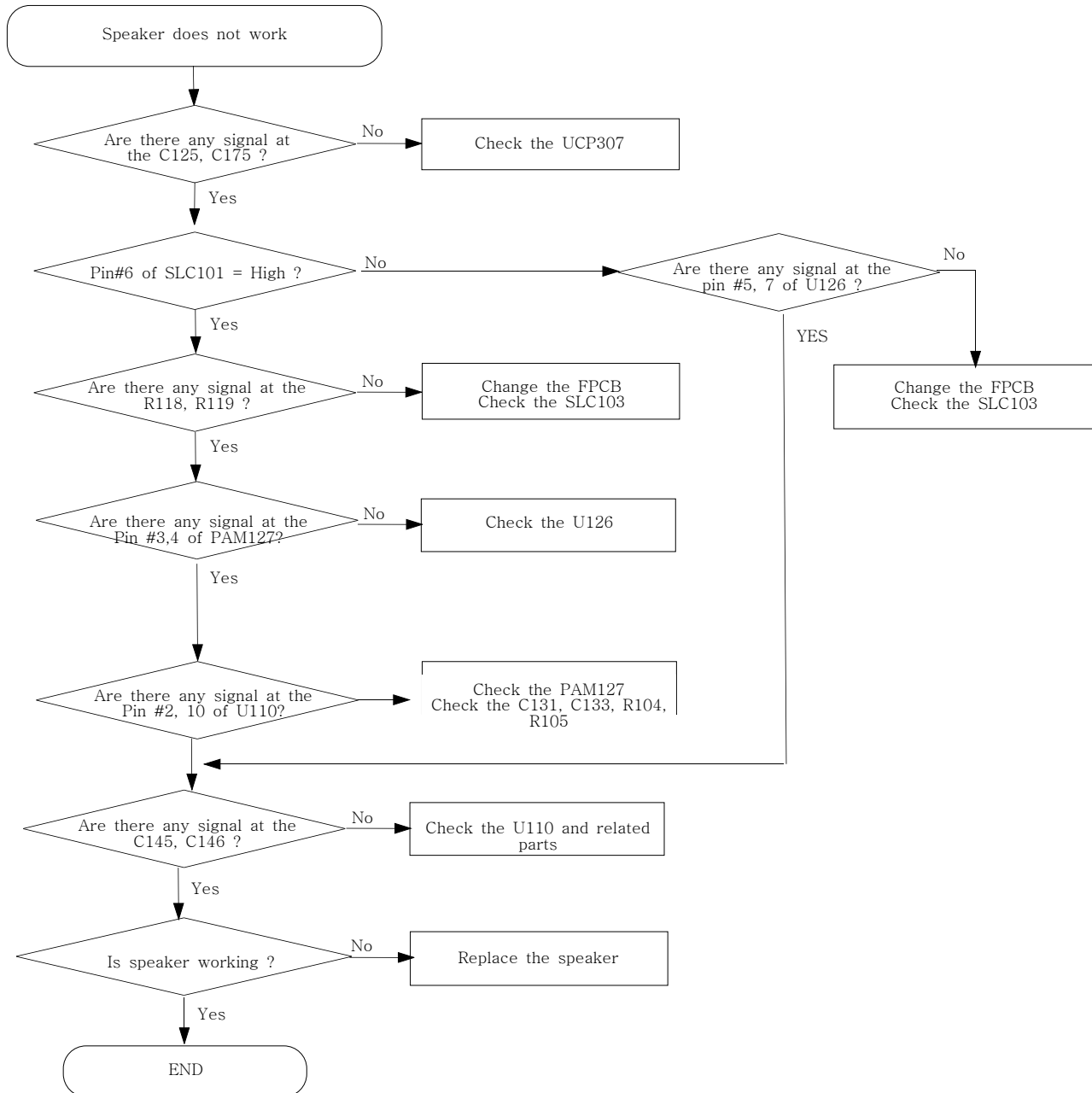




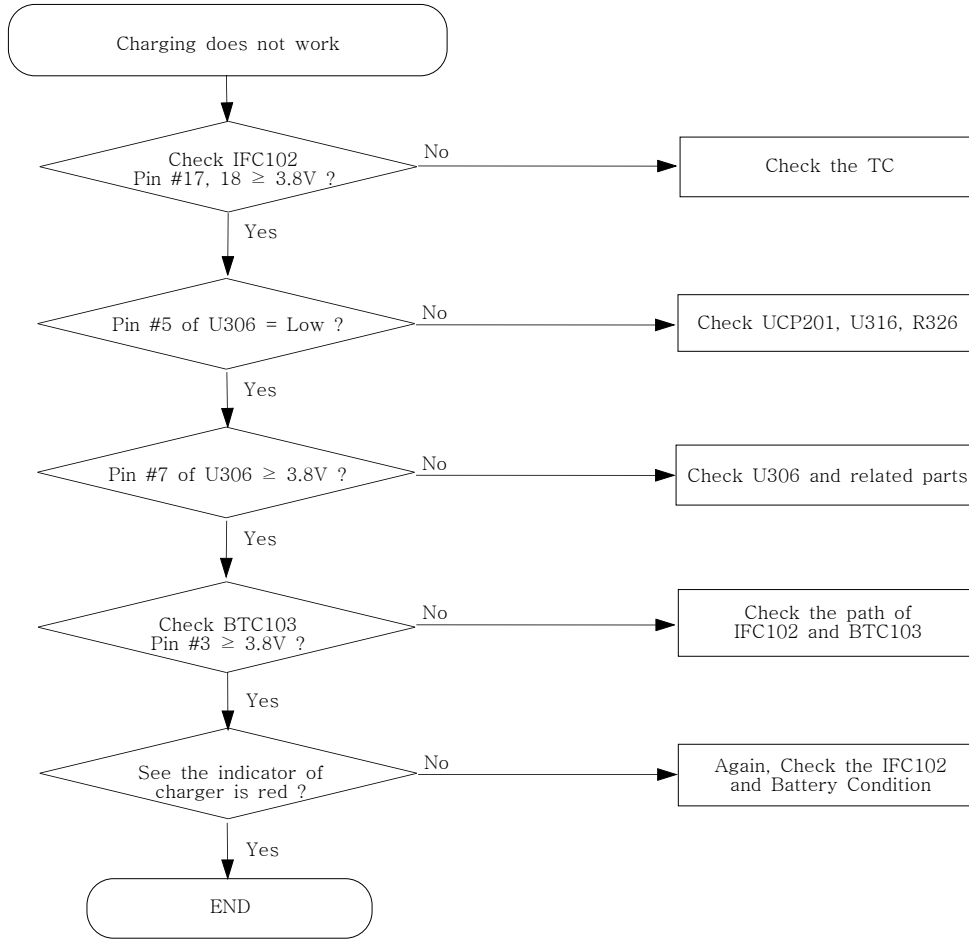


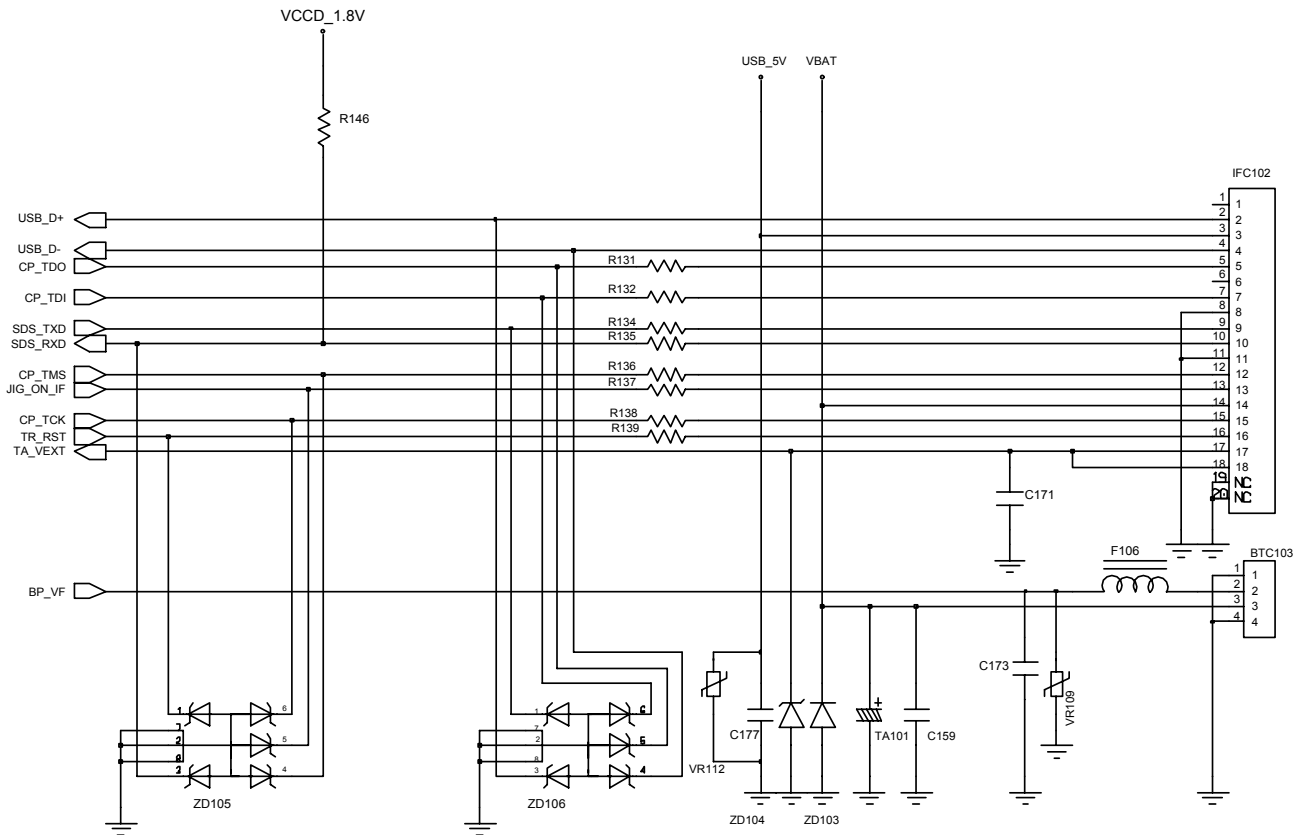
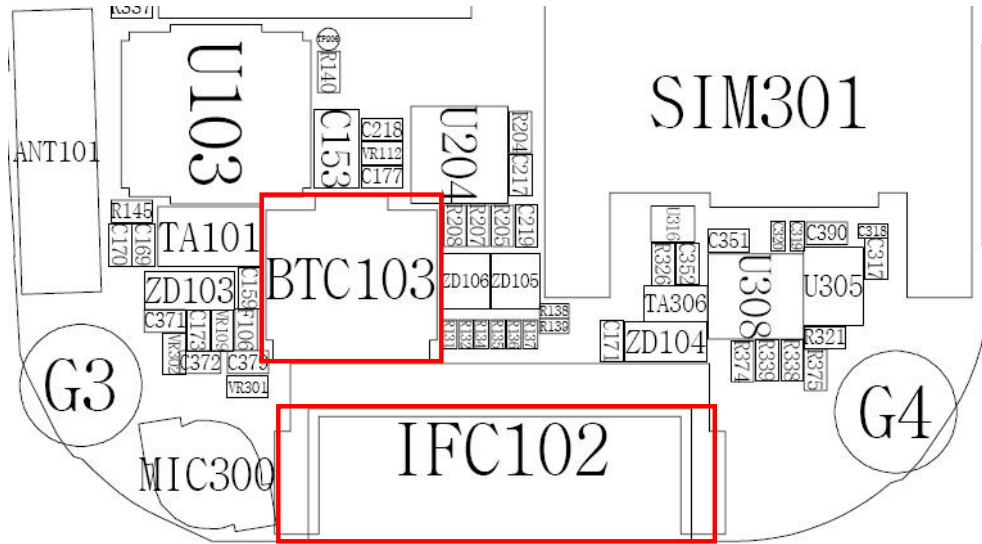


2-1-8. Receiver Part

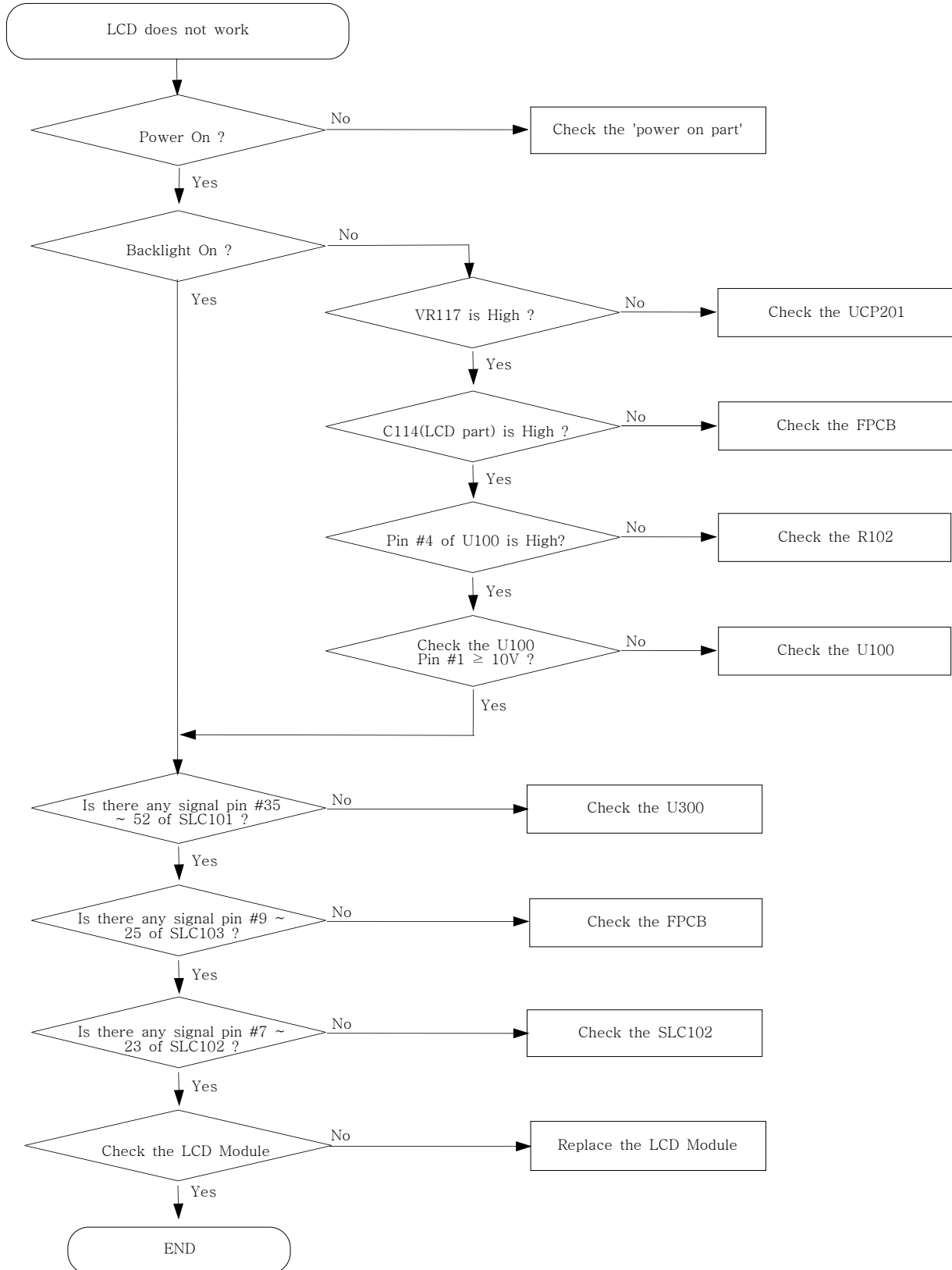


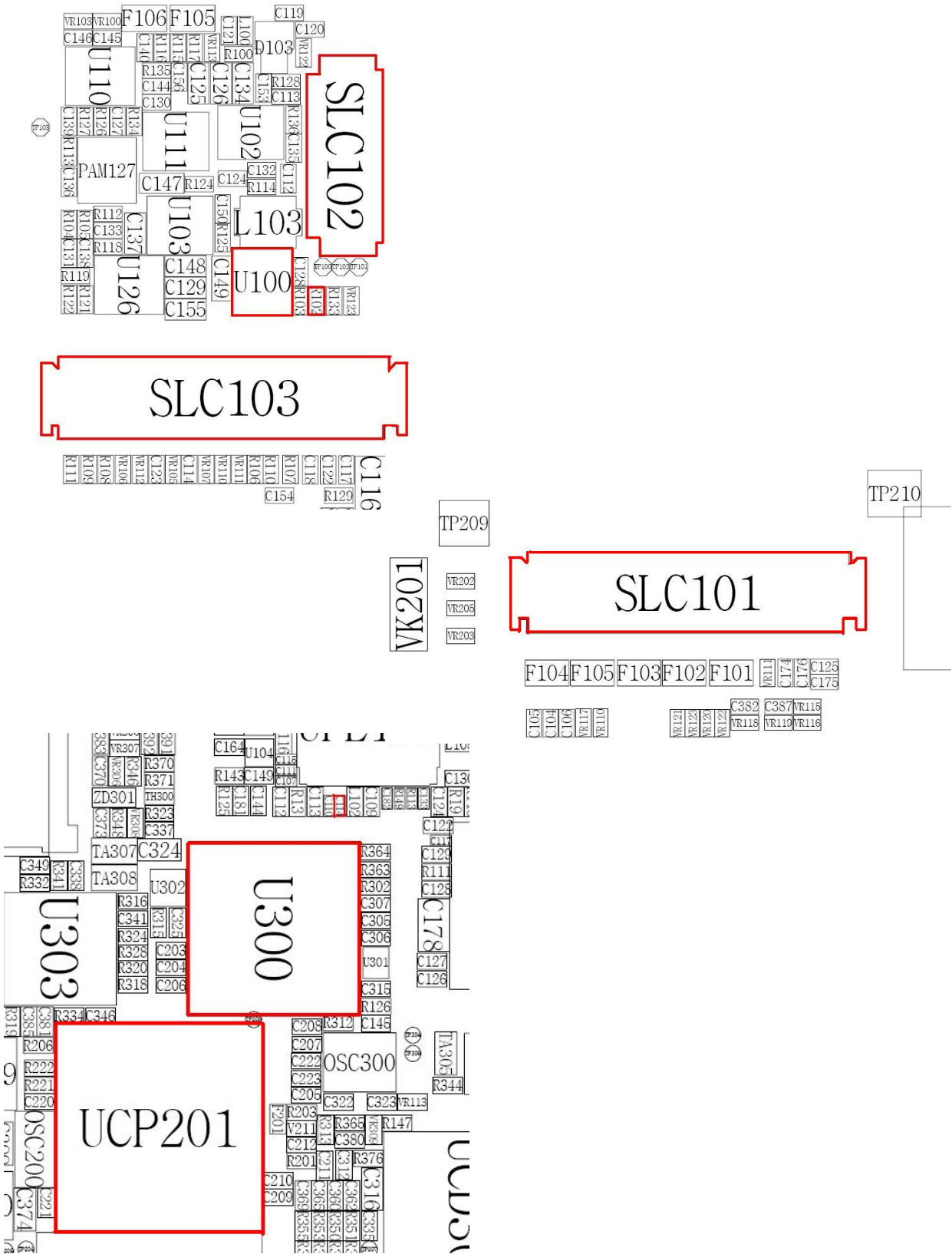
2-1-9. Charging Part

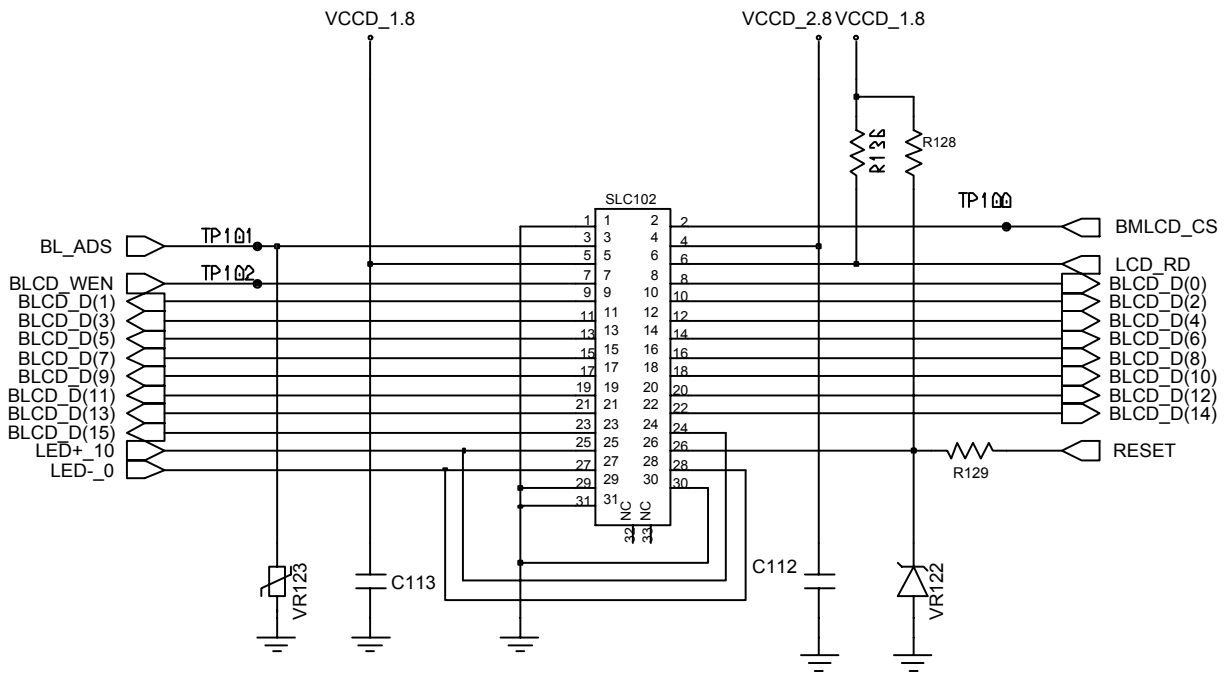




2-1-10. LCD Part

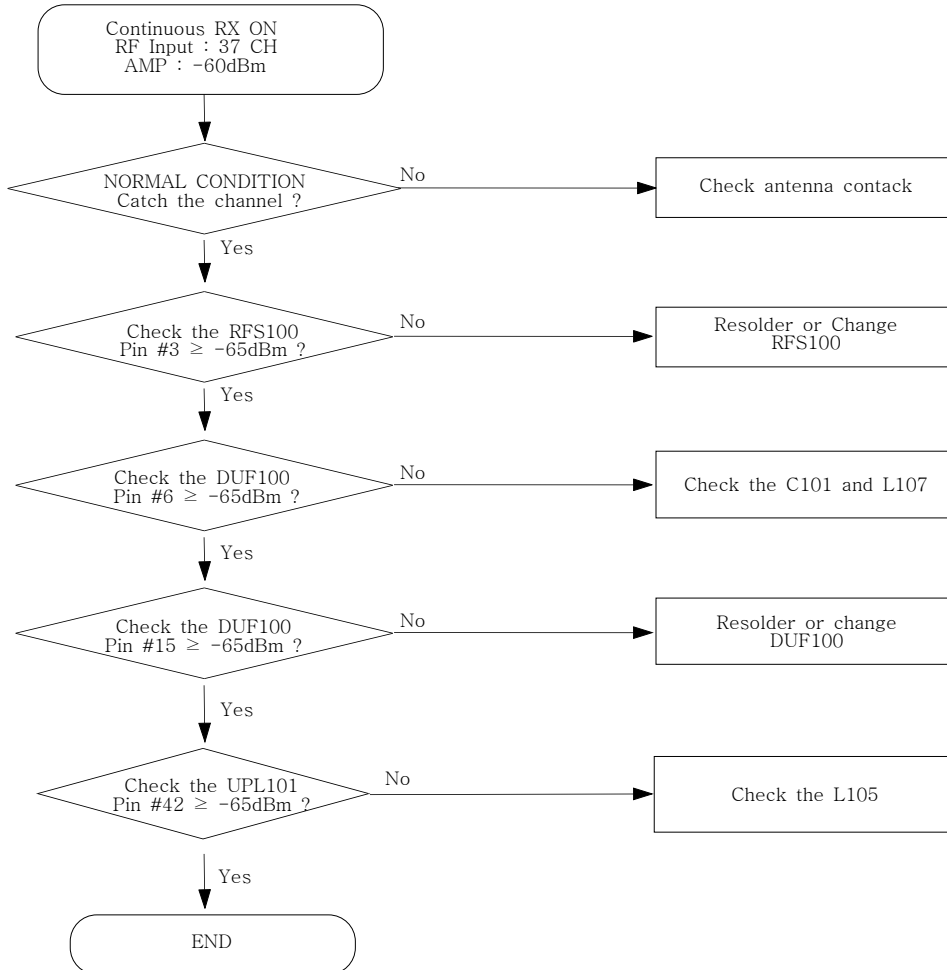


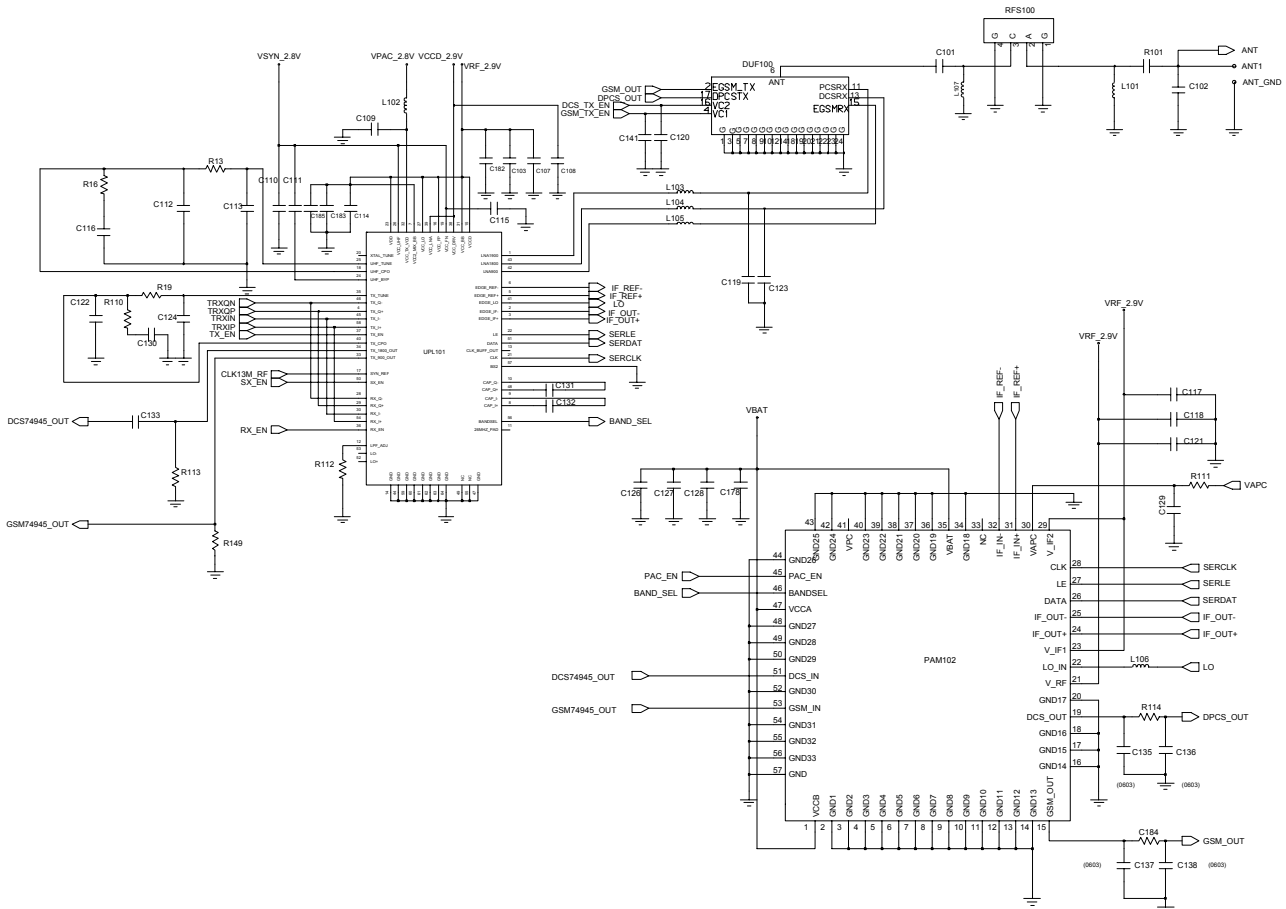
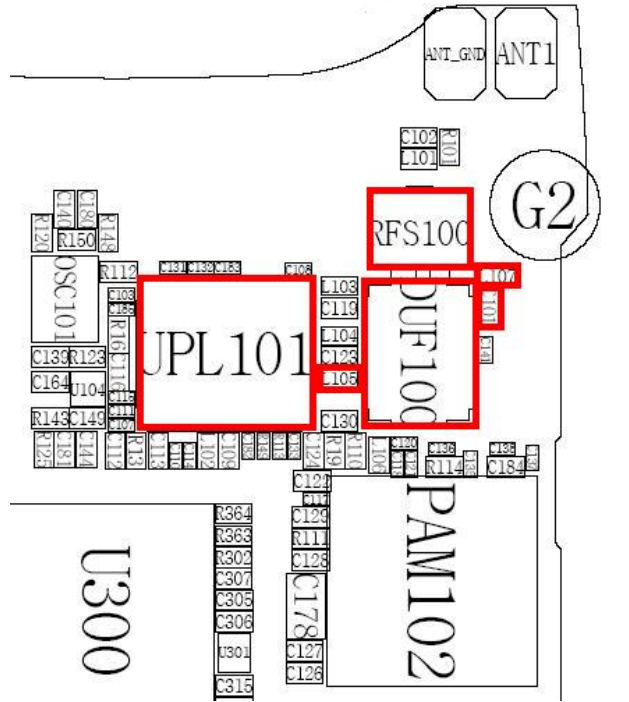




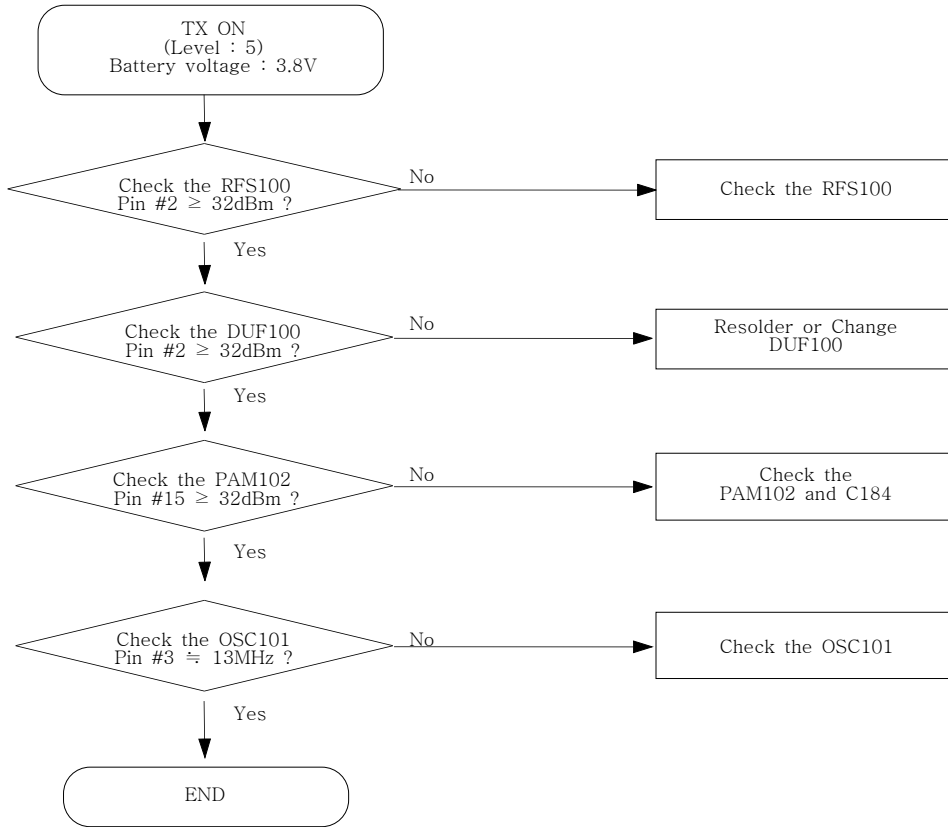
2-2.RF

2-2-1. EGSM RX

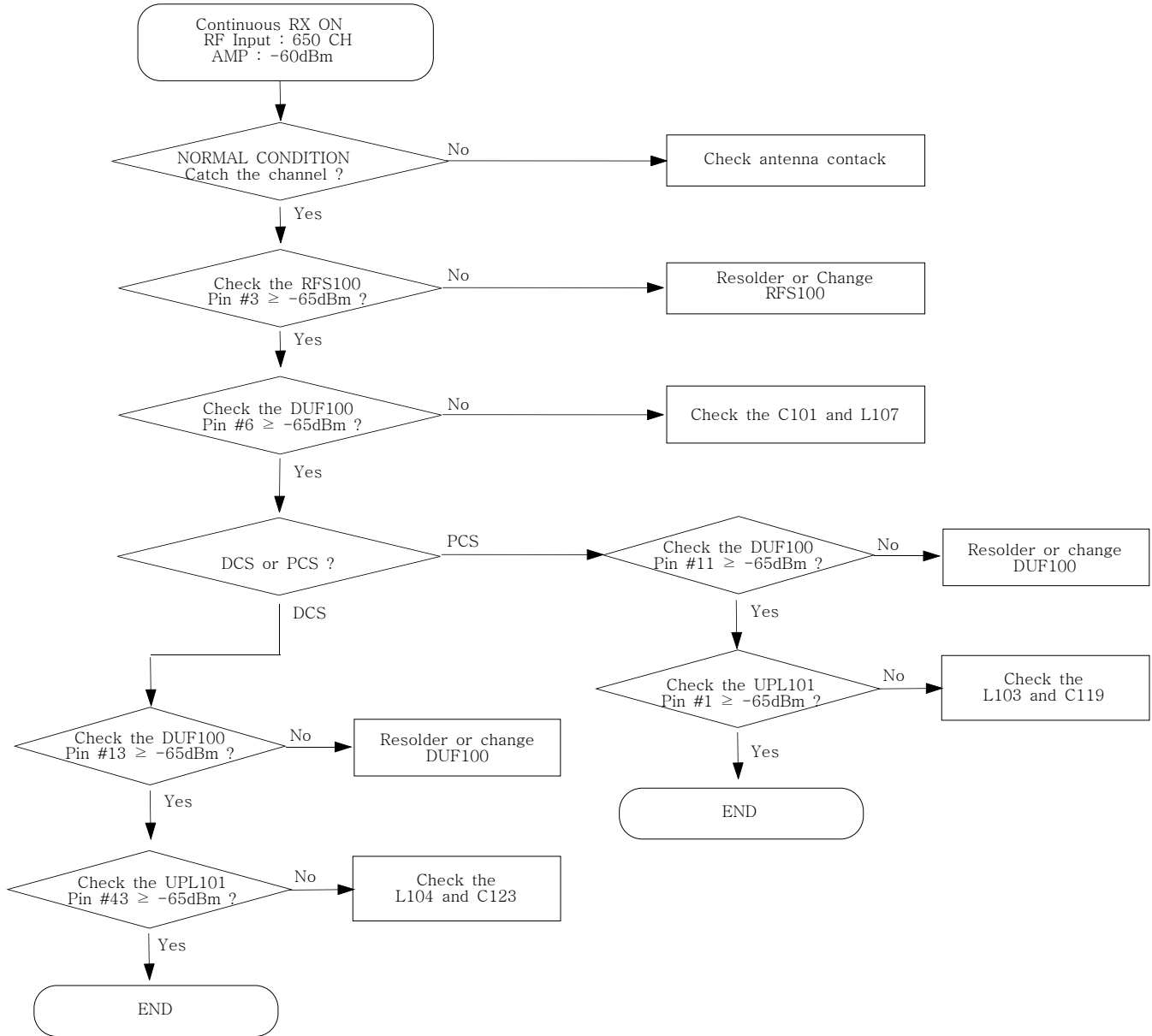




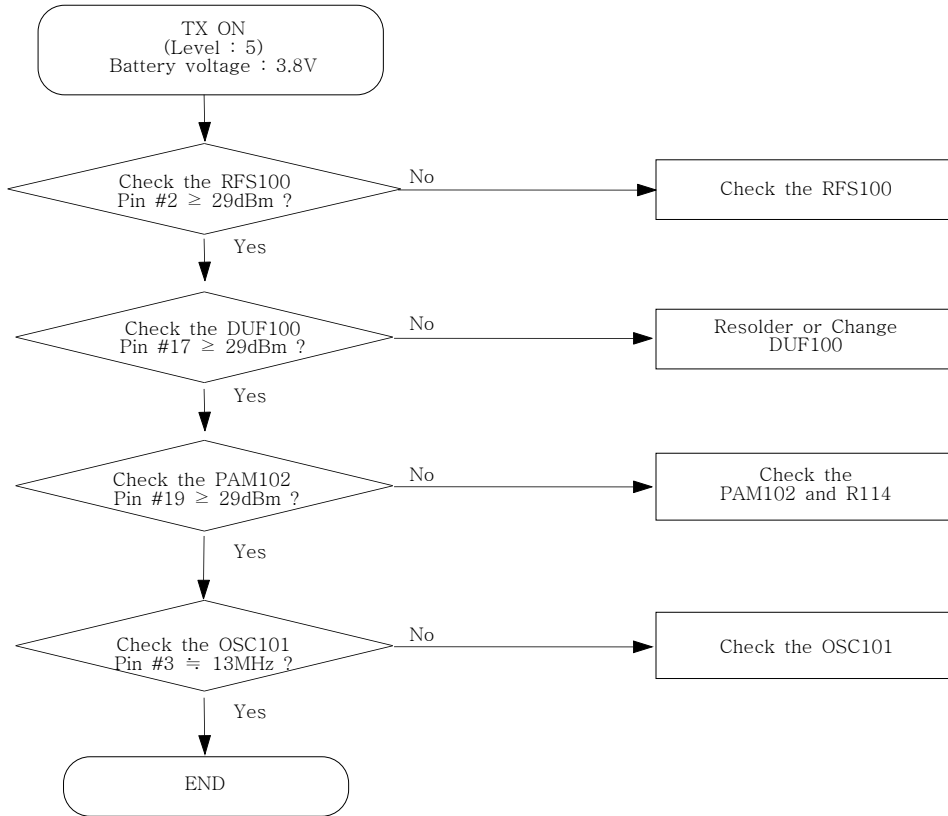
2-2-2. EGSM Tx



2-2-3. DCS/PCS Rx

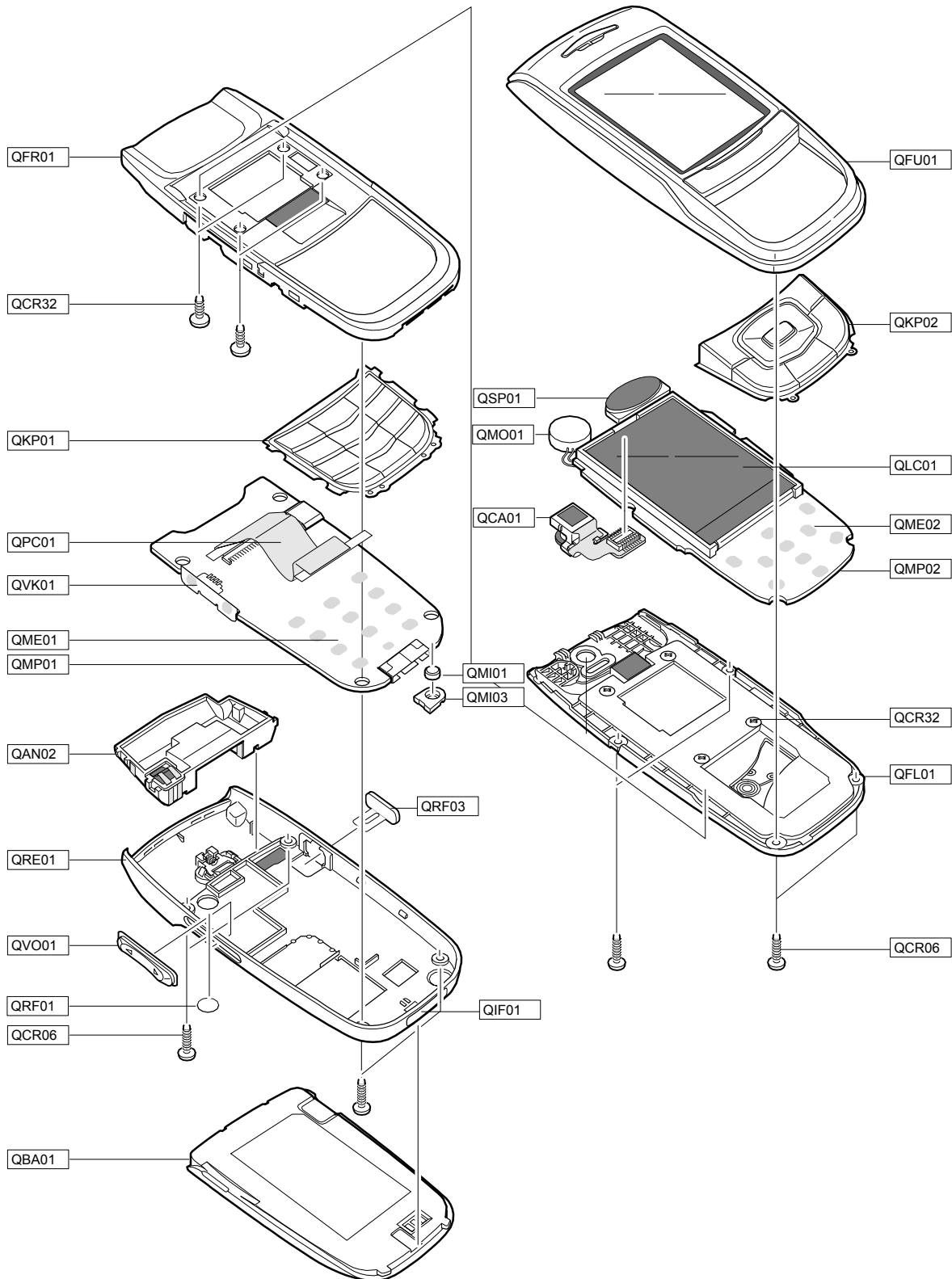


2-2-4. DCS/PCS TX



3. SGH-S400i Exploded View and Parts List

3-1. GPRS phone Exploded View

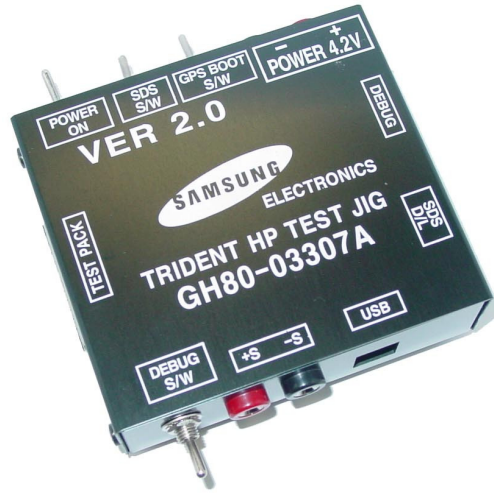


3-2. GPRS phone Parts list

Location NO.		Description	LCD CODE
QAN02		ANTENNA-SGHS400I	GH42-00656A
QBA01		BATTERY-800MAH,W/GRY,EU,M	GH43-02109A
QCA01		UNIT-CAMERA	GH59-02460A
QCR06		SCREW-MACHINE	6001-001155
QCR32		SCREW-MACHINE	6001-001700
QFR01		MEC-FRONT COVER	GH75-08135A
QFU01		MEC-SLIDE UPPER	GH75-08131A
QIF01		PMO-IF COVER	GH72-25336A
QKP01		MEC-KEYPAD MAIN	GH75-08547A
QKP02		MEC-KEYPAD SUB	GH75-08546A
QLC01		ELA UNIT-SGHS400I LCD MODULE	GH96-02082A
QME01		UNIT-METAL DOME(MAIN)	GH59-02455A
QME02		UNIT-METAL DOME(SUB)	GH59-02456A
QMI01		MICROPHONE-ASSY-SGHE340	GH30-00199A
QMI03		RMO-MIC RUBBER	GH73-05501A
QMO01		MOTOR DC-SPHB2300	GH31-00181A
QMP01		PBA MAIN-SGHS400I	GH92-02279A
QMP02		PBA SUB-SGHS400I	GH92-02304A
QPC01		MEA-SLIDE FPCB KIT	GH97-05325A
QRF01		MPR-RF COVER SHEET	GH74-19108A
QSP01		SPEAKER	3001-001687
QVK01		UNIT-SIDE KEY	GH59-02454A
QFL01		MEC-SLIDE LOWER	GH75-08132A
	QCR32	SCREW-MACHINE	6001-001700
QRE01		MEC-REAR COVER	GH75-08136A
	QRF03	PMO-EAR COVER	GH72-25334A
	QVO01	PMO-VOLUME KEY	GH72-25347A

Location NO.	Description
BAG PE	6902-000297
ADAPTOR-SGHD500 BLK	GH44-00954A
SPRING ETC-BATT LOCKER SPRING	GH61-00089A
LABEL(P)-WATER SOAK	GH68-02026A
LABEL(R)-SGHS400I (EU)	GH68-08393A
MANUAL-EPL GERMAN	GH68-08657A
BOX(P)-UNIT MAIN (EU)	GH69-03452A
CUSHION-CASE TA2 MA2	GH69-03453A
RMO-CUSHION CHIP A	GH73-05970A
RMO-CUSHION CHIP B	GH73-05971A
MPR-BOHO VINYL S/U (R)	GH74-13284A
MPR-TAPE LED	GH74-13756A
MPR-REMOVE TAPE LCD	GH74-13804A
MPR-TAPE MOTOR	GH74-17981A
MPR-SPONGE SPK	GH74-17983A
MPR-TAPE REMOVE LCD	GH74-18286A
MPR-TAPE PBA LEFT	GH74-18565A
MPR-TAPE PBA RIGHT	GH74-18566A
MPR-SPONGE MOTOR	GH74-19105A
MPR-TAPE CHIP INSULATION	GH74-19109A
MPR-TAPE MAIN KEY GOLD	GH74-19110A
MPR-TAPE SIGNAL INSULATI	GH74-19111A
MPR-TAPE CN GOLD	GH74-19112A
MPR-TAPE LCD ADHESIVE	GH74-19113A
MPR-TAPE LCD INSULATION	GH74-19114A
MPR-TAPE SUB GOLD	GH74-19115A
MPR-TAPE CN ADHESIVE	GH74-19116A
MPR-TAPE SUB INSULATION	GH74-19117A
MPR-TAPE MAIN INSULATION	GH74-19120A
MPR-BOHO VINYL SLIDE UPP	GH74-19121A
MEC-LOWER	GH75-08133A

3-3. Test Jig (GH80-03307A)



3-3-1. RF Test Cable
(GH39-00397A)



3-3-2. Test Cable
(GH39-00369A)



3-3-3. Serial Cable



3-3-4. Power Supply Cable



3-3-5. DATA CABLE
(GH39-00305A)



3-3-6. TA
(GH44-00954A)



4. SGH-S400i MAIN Electrical Parts List

SEC Code	Design LOC	Discription	STATUS
0403-001427	ZD104	DIODE-ZENER	SA
0403-001547	ZD103	DIODE-ZENER	SA
0404-001076	D101	DIODE-SCHOTTKY	SA
0404-001076	D102	DIODE-SCHOTTKY	SA
0404-001262	D300	DIODE-SCHOTTKY	SA
0406-001150	VR122	DIODE-TVS	SA
0406-001197	ZD105	DIODE-TVS	SA
0406-001197	ZD106	DIODE-TVS	SA
0406-001203	ZD301	DIODE-TVS	SA
0407-000115	D103	DIODE-ARRAY	SA
0504-001140	U301	TR-DIGITAL	SA
0504-001171	U316	TR-DIGITAL	SA
0601-001819	LED100	LED	SA
0601-001819	LED101	LED	SA
0601-001819	LED102	LED	SA
0601-001819	LED103	LED	SA
0601-001819	LED104	LED	SA
0601-001819	LED105	LED	SA
0601-001819	LED201	LED	SA
0601-001819	LED202	LED	SA
0601-001819	LED203	LED	SA
0601-001819	LED204	LED	SA
0601-001819	LED205	LED	SA
0601-001819	LED206	LED	SA
0601-001819	LED207	LED	SA
0601-001819	LED208	LED	SA
0601-001819	LED209	LED	SA
0601-001819	LED210	LED	SA
0801-002529	U305	IC-CMOS LOGIC	SA
0801-002958	U104	IC-CMOS LOGIC	SA
1001-001261	U110	IC-ANALOG SWITCH	SA
1001-001261	U126	IC-ANALOG SWITCH	SA
1001-001261	U309	IC-ANALOG SWITCH	SA
1001-001306	U304	IC-ANALOG MULTIPLEX	SA

SEC Code	Design LOC	Discription	STATUS
1009-001018	U203	IC-HALL EFFECT S/W	SA
1108-000001	UME202	IC-MCP	SA
1201-002222	PAM127	IC-AUDIO AMP	SA
1201-002294	PAM102	IC-POWER AMP	SA
1203-002850	U100	IC-DC/DC CONVERTER	SA
1203-002860	U103	IC-MULTI REG.	SA
1203-002969	U111	IC-MULTI REG.	SA
1203-003046	U102	IC-BATTERY	SA
1203-003072	U310	IC-MULTI REG.	SA
1203-003109	U308	IC-BATTERY	SA
1203-003523	U302	IC-POSI.FIXED REG.	SA
1203-003565	UCD307	IC-POWER SUPERVISOR	SA
1203-003612	U312	IC-DC/DC CONVERTER	SA
1203-003616	U311	IC-DC/DC CONVERTER	SA
1204-002138	U314	IC-MELODY	SA
1205-002272	U204	IC-TRANSCEIVER	SA
1205-002612	U300	IC-CODEC	SA
1205-002613	U303	IC-CODEC	SA
1205-002821	UPL101	IC-TRANSCEIVER	SA
1404-001165	TH300	THERMISTOR-NTC	SA
1405-001082	V211	VARISTOR	SA
1405-001082	VR100	VARISTOR	SA
1405-001082	VR101	VARISTOR	SA
1405-001082	VR103	VARISTOR	SA
1405-001082	VR105	VARISTOR	SA
1405-001082	VR106	VARISTOR	SA
1405-001082	VR107	VARISTOR	SA
1405-001082	VR108	VARISTOR	SA
1405-001082	VR109	VARISTOR	SA
1405-001082	VR109	VARISTOR	SA
1405-001082	VR110	VARISTOR	SA
1405-001082	VR110	VARISTOR	SA
1405-001082	VR111	VARISTOR	SA
1405-001082	VR111	VARISTOR	SA

SEC Code	Design LOC	Discription	STATUS
1405-001082	VR112	VARISTOR	SA
1405-001082	VR112	VARISTOR	SA
1405-001082	VR113	VARISTOR	SA
1405-001082	VR113	VARISTOR	SA
1405-001082	VR115	VARISTOR	SA
1405-001082	VR116	VARISTOR	SA
1405-001082	VR117	VARISTOR	SA
1405-001082	VR118	VARISTOR	SA
1405-001082	VR119	VARISTOR	SA
1405-001082	VR120	VARISTOR	SA
1405-001082	VR121	VARISTOR	SA
1405-001082	VR122	VARISTOR	SA
1405-001082	VR123	VARISTOR	SA
1405-001082	VR202	VARISTOR	SA
1405-001082	VR203	VARISTOR	SA
1405-001082	VR205	VARISTOR	SA
1405-001082	VR301	VARISTOR	SA
1405-001082	VR302	VARISTOR	SA
1405-001082	VR303	VARISTOR	SA
1405-001082	VR304	VARISTOR	SA
1405-001082	VR305	VARISTOR	SA
1405-001082	VR306	VARISTOR	SA
1405-001082	VR307	VARISTOR	SA
1405-001082	VR308	VARISTOR	SA
1405-001082	VR309	VARISTOR	SA
1405-001082	VR310	VARISTOR	SA
1405-001133	VR114	VARISTOR	SA
1405-001133	VR115	VARISTOR	SA
1405-001133	VR117	VARISTOR	SA
1405-001133	VR119	VARISTOR	SA
1405-001133	VR120	VARISTOR	SA
1405-001138	VR123	VARISTOR	SA
2007-000137	R16	R-CHIP	SA
2007-000138	R126	R-CHIP	SA

SEC Code	Design LOC	Discription	STATUS
2007-000138	R19	R-CHIP	SA
2007-000138	R322	R-CHIP	SA
2007-000138	R324	R-CHIP	SA
2007-000140	R321	R-CHIP	SA
2007-000140	R326	R-CHIP	SA
2007-000141	R314	R-CHIP	SA
2007-000141	R319	R-CHIP	SA
2007-000143	R100	R-CHIP	SA
2007-000143	R102	R-CHIP	SA
2007-000143	R133	R-CHIP	SA
2007-000143	R327	R-CHIP	SA
2007-000143	R363	R-CHIP	SA
2007-000143	R364	R-CHIP	SA
2007-000143	R376	R-CHIP	SA
2007-000148	R120	R-CHIP	SA
2007-000148	R203	R-CHIP	SA
2007-000148	R317	R-CHIP	SA
2007-000148	R334	R-CHIP	SA
2007-000148	R365	R-CHIP	SA
2007-000157	R114	R-CHIP	SA
2007-000157	R124	R-CHIP	SA
2007-000157	R125	R-CHIP	SA
2007-000157	R134	R-CHIP	SA
2007-000157	R140	R-CHIP	SA
2007-000157	R146	R-CHIP	SA
2007-000157	R204	R-CHIP	SA
2007-000157	R315	R-CHIP	SA
2007-000157	R320	R-CHIP	SA
2007-000157	R337	R-CHIP	SA
2007-000157	R344	R-CHIP	SA
2007-000157	R361	R-CHIP	SA
2007-000157	R362	R-CHIP	SA
2007-000159	R101	R-CHIP	SA
2007-000161	R301	R-CHIP	SA

SEC Code	Design LOC	Discription	STATUS
2007-000161	R343	R-CHIP	SA
2007-000161	R349	R-CHIP	SA
2007-000162	R135	R-CHIP	SA
2007-000162	R206	R-CHIP	SA
2007-000162	R221	R-CHIP	SA
2007-000162	R222	R-CHIP	SA
2007-000162	R316	R-CHIP	SA
2007-000162	R338	R-CHIP	SA
2007-000162	R346	R-CHIP	SA
2007-000162	R354	R-CHIP	SA
2007-000162	R358	R-CHIP	SA
2007-000162	R374	R-CHIP	SA
2007-000162	R375	R-CHIP	SA
2007-000170	R312	R-CHIP	SA
2007-000170	R318	R-CHIP	SA
2007-000170	R328	R-CHIP	SA
2007-000171	C184	R-CHIP	SA
2007-000171	R114	R-CHIP	SA
2007-000171	R118	R-CHIP	SA
2007-000171	R119	R-CHIP	SA
2007-000171	R121	R-CHIP	SA
2007-000171	R122	R-CHIP	SA
2007-000171	R129	R-CHIP	SA
2007-000171	R130	R-CHIP	SA
2007-000171	R145	R-CHIP	SA
2007-000171	R147	R-CHIP	SA
2007-000171	R300	R-CHIP	SA
2007-000171	R302	R-CHIP	SA
2007-000171	R304	R-CHIP	SA
2007-000171	R307	R-CHIP	SA
2007-000171	R308	R-CHIP	SA
2007-000171	R313	R-CHIP	SA
2007-000171	R348	R-CHIP	SA
2007-000171	R371	R-CHIP	SA

SEC Code	Design LOC	Discription	STATUS
2007-000171	R373	R-CHIP	SA
2007-000172	R148	R-CHIP	SA
2007-000172	R201	R-CHIP	SA
2007-000172	R340	R-CHIP	SA
2007-000172	R341	R-CHIP	SA
2007-000242	R205	R-CHIP	SA
2007-000758	R143	R-CHIP	SA
2007-000831	R112	R-CHIP	SA
2007-000982	R13	R-CHIP	SA
2007-001119	R342	R-CHIP	SA
2007-001217	R115	R-CHIP	SA
2007-001217	R209	R-CHIP	SA
2007-001217	R210	R-CHIP	SA
2007-001217	R211	R-CHIP	SA
2007-001217	R213	R-CHIP	SA
2007-001290	R126	R-CHIP	SA
2007-001290	R127	R-CHIP	SA
2007-001301	R212	R-CHIP	SA
2007-001301	R214	R-CHIP	SA
2007-001308	R106	R-CHIP	SA
2007-001308	R107	R-CHIP	SA
2007-001308	R108	R-CHIP	SA
2007-001308	R109	R-CHIP	SA
2007-001308	R110	R-CHIP	SA
2007-001308	R111	R-CHIP	SA
2007-001325	R309	R-CHIP	SA
2007-002797	R125	R-CHIP	SA
2007-002965	R103	R-CHIP	SA
2007-002970	R215	R-CHIP	SA
2007-002970	R216	R-CHIP	SA
2007-002970	R217	R-CHIP	SA
2007-002970	R218	R-CHIP	SA
2007-003025	R330	R-CHIP	SA
2007-003025	R332	R-CHIP	SA

SEC Code	Design LOC	Discription	STATUS
2007-003030	R116	R-CHIP	SA
2007-003030	R117	R-CHIP	SA
2007-003112	R120	R-CHIP	SA
2007-007014	R306	R-CHIP	SA
2007-007095	R110	R-CHIP	SA
2007-007142	R111	R-CHIP	SA
2007-007142	R350	R-CHIP	SA
2007-007142	R351	R-CHIP	SA
2007-007142	R353	R-CHIP	SA
2007-007142	R355	R-CHIP	SA
2007-007306	R123	R-CHIP	SA
2007-007306	R305	R-CHIP	SA
2007-007306	R372	R-CHIP	SA
2007-007308	R323	R-CHIP	SA
2007-007314	R325	R-CHIP	SA
2007-007489	R303	R-CHIP	SA
2007-007528	R345	R-CHIP	SA
2007-007528	R347	R-CHIP	SA
2007-007528	R352	R-CHIP	SA
2007-007528	R359	R-CHIP	SA
2007-008117	R339	R-CHIP	SA
2007-008300	R104	R-CHIP	SA
2007-008300	R105	R-CHIP	SA
2007-008300	R128	R-CHIP	SA
2007-008419	R131	R-CHIP	SA
2007-008419	R132	R-CHIP	SA
2007-008419	R134	R-CHIP	SA
2007-008419	R135	R-CHIP	SA
2007-008419	R136	R-CHIP	SA
2007-008419	R137	R-CHIP	SA
2007-008419	R138	R-CHIP	SA
2007-008419	R139	R-CHIP	SA
2007-008542	R367	R-CHIP	SA
2007-009084	R329	R-CHIP	SA

SEC Code	Design LOC	Discription	STATUS
2007-009084	R331	R-CHIP	SA
2007-009084	R335	R-CHIP	SA
2007-009084	R336	R-CHIP	SA
2007-009111	R149	R-CHIP	SA
2007-009124	R207	R-CHIP	SA
2007-009124	R208	R-CHIP	SA
2007-009199	R113	R-CHIP	SA
2203-000233	C334	C-CER,CHIP	SA
2203-000254	C126	C-CER,CHIP	SA
2203-000254	C127	C-CER,CHIP	SA
2203-000254	C127	C-CER,CHIP	SA
2203-000254	C128	C-CER,CHIP	SA
2203-000254	C139	C-CER,CHIP	SA
2203-000254	C140	C-CER,CHIP	SA
2203-000254	C150	C-CER,CHIP	SA
2203-000254	C153	C-CER,CHIP	SA
2203-000254	C180	C-CER,CHIP	SA
2203-000254	C181	C-CER,CHIP	SA
2203-000254	C204	C-CER,CHIP	SA
2203-000254	C208	C-CER,CHIP	SA
2203-000254	C212	C-CER,CHIP	SA
2203-000254	C222	C-CER,CHIP	SA
2203-000254	C339	C-CER,CHIP	SA
2203-000254	C378	C-CER,CHIP	SA
2203-000278	C144	C-CER,CHIP	SA
2203-000278	C322	C-CER,CHIP	SA
2203-000278	C323	C-CER,CHIP	SA
2203-000311	C129	C-CER,CHIP	SA
2203-000359	C371	C-CER,CHIP	SA
2203-000359	C379	C-CER,CHIP	SA
2203-000386	C101	C-CER,CHIP	SA
2203-000386	C220	C-CER,CHIP	SA
2203-000386	C221	C-CER,CHIP	SA
2203-000438	C164	C-CER,CHIP	SA

SEC Code	Design LOC	Discription	STATUS
2203-000438	C309	C-CER,CHIP	SA
2203-000438	C391	C-CER,CHIP	SA
2203-000438	C392	C-CER,CHIP	SA
2203-000585	C113	C-CER,CHIP	SA
2203-000725	C130	C-CER,CHIP	SA
2203-000812	C119	C-CER,CHIP	SA
2203-000812	C120	C-CER,CHIP	SA
2203-000812	C125	C-CER,CHIP	SA
2203-000812	C145	C-CER,CHIP	SA
2203-000812	C146	C-CER,CHIP	SA
2203-000812	C175	C-CER,CHIP	SA
2203-000812	C321	C-CER,CHIP	SA
2203-000854	C124	C-CER,CHIP	SA
2203-000854	C139	C-CER,CHIP	SA
2203-000854	C140	C-CER,CHIP	SA
2203-000854	C358	C-CER,CHIP	SA
2203-000854	C359	C-CER,CHIP	SA
2203-000854	C388	C-CER,CHIP	SA
2203-000854	C389	C-CER,CHIP	SA
2203-000995	C214	C-CER,CHIP	SA
2203-001124	C112	C-CER,CHIP	SA
2203-001153	C301	C-CER,CHIP	SA
2203-001210	C116	C-CER,CHIP	SA
2203-001210	C304	C-CER,CHIP	SA
2203-001405	C211	C-CER,CHIP	SA
2203-001405	C337	C-CER,CHIP	SA
2203-001412	C145	C-CER,CHIP	SA
2203-001437	C122	C-CER,CHIP	SA
2203-002487	C346	C-CER,CHIP	SA
2203-002668	C123	C-CER,CHIP	SA
2203-002709	C156	C-CER,CHIP	SA
2203-002709	C341	C-CER,CHIP	SA
2203-002709	C344	C-CER,CHIP	SA
2203-002709	C380	C-CER,CHIP	SA

SEC Code	Design LOC	Discription	STATUS
2203-002709	C381	C-CER,CHIP	SA
2203-005057	C174	C-CER,CHIP	SA
2203-005057	C176	C-CER,CHIP	SA
2203-005057	R101	C-CER,CHIP	SA
2203-005344	C370	C-CER,CHIP	SA
2203-005383	C366	C-CER,CHIP	SA
2203-005383	C376	C-CER,CHIP	SA
2203-005682	C141	C-CER,CHIP	SA
2203-005682	C319	C-CER,CHIP	SA
2203-005682	C320	C-CER,CHIP	SA
2203-005736	C108	C-CER,CHIP	SA
2203-005819	C399	C-CER,CHIP	SA
2203-006048	C114	C-CER,CHIP	SA
2203-006048	C117	C-CER,CHIP	SA
2203-006048	C123	C-CER,CHIP	SA
2203-006048	C124	C-CER,CHIP	SA
2203-006048	C128	C-CER,CHIP	SA
2203-006048	C130	C-CER,CHIP	SA
2203-006048	C131	C-CER,CHIP	SA
2203-006048	C133	C-CER,CHIP	SA
2203-006048	C138	C-CER,CHIP	SA
2203-006048	C143	C-CER,CHIP	SA
2203-006048	C144	C-CER,CHIP	SA
2203-006048	C149	C-CER,CHIP	SA
2203-006048	C159	C-CER,CHIP	SA
2203-006048	C171	C-CER,CHIP	SA
2203-006048	C173	C-CER,CHIP	SA
2203-006048	C205	C-CER,CHIP	SA
2203-006048	C206	C-CER,CHIP	SA
2203-006048	C207	C-CER,CHIP	SA
2203-006048	C209	C-CER,CHIP	SA
2203-006048	C213	C-CER,CHIP	SA
2203-006048	C216	C-CER,CHIP	SA
2203-006048	C217	C-CER,CHIP	SA

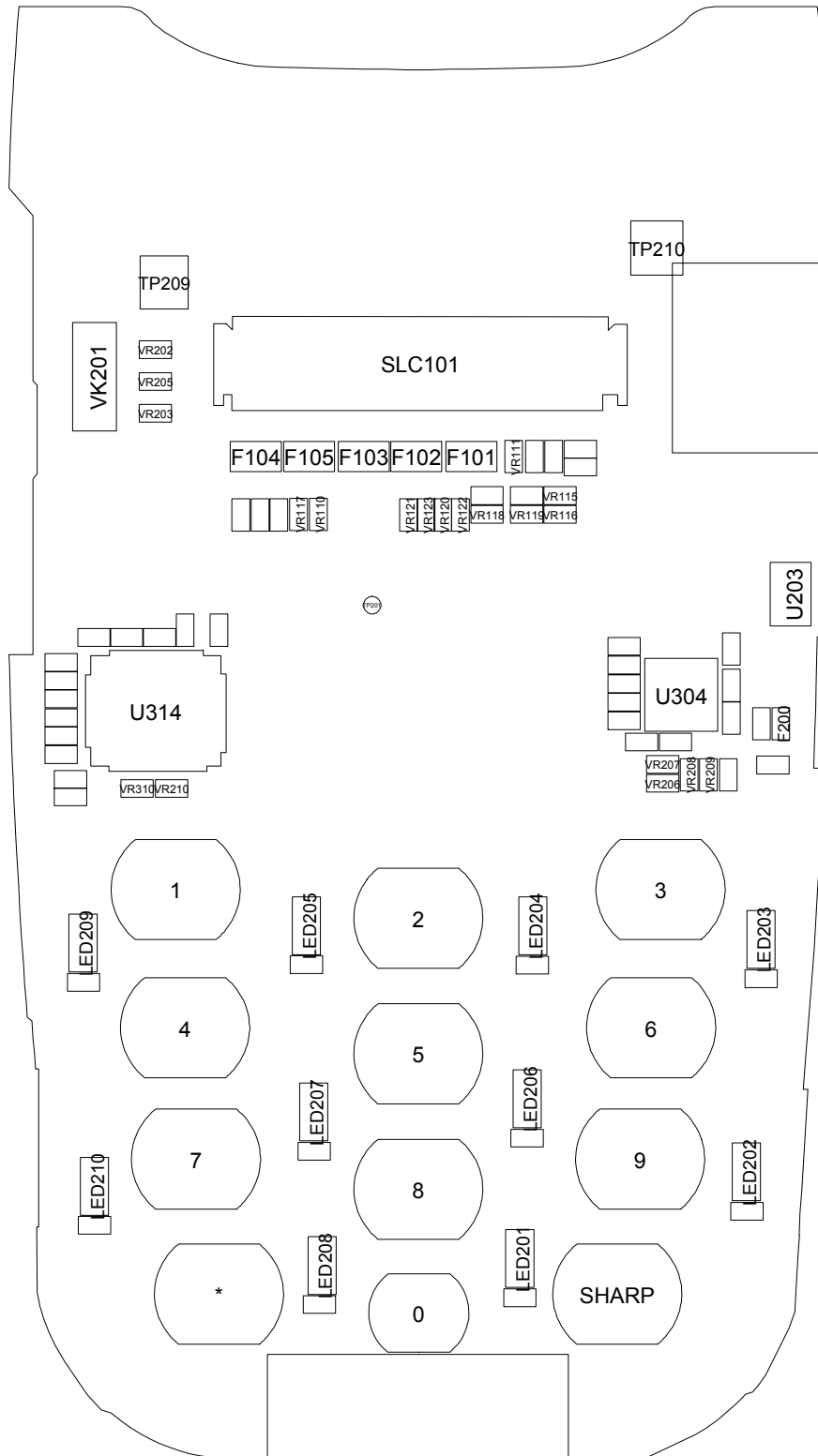
SEC Code	Design LOC	Discription	STATUS
2203-006048	C218	C-CER,CHIP	SA
2203-006048	C223	C-CER,CHIP	SA
2203-006048	C303	C-CER,CHIP	SA
2203-006048	C308	C-CER,CHIP	SA
2203-006048	C312	C-CER,CHIP	SA
2203-006048	C314	C-CER,CHIP	SA
2203-006048	C315	C-CER,CHIP	SA
2203-006048	C325	C-CER,CHIP	SA
2203-006048	C335	C-CER,CHIP	SA
2203-006048	C352	C-CER,CHIP	SA
2203-006048	C373	C-CER,CHIP	SA
2203-006053	C137	C-CER,CHIP	SA
2203-006093	C104	C-CER,CHIP	SA
2203-006093	C106	C-CER,CHIP	SA
2203-006093	C397	C-CER,CHIP	SA
2203-006123	C133	C-CER,CHIP	SA
2203-006137	C340	C-CER,CHIP	SA
2203-006194	C110	C-CER,CHIP	SA
2203-006194	C111	C-CER,CHIP	SA
2203-006194	C117	C-CER,CHIP	SA
2203-006194	C118	C-CER,CHIP	SA
2203-006194	C121	C-CER,CHIP	SA
2203-006194	C182	C-CER,CHIP	SA
2203-006194	C183	C-CER,CHIP	SA
2203-006194	C185	C-CER,CHIP	SA
2203-006194	C310	C-CER,CHIP	SA
2203-006194	C311	C-CER,CHIP	SA
2203-006257	C351	C-CER,CHIP	SA
2203-006257	C386	C-CER,CHIP	SA
2203-006260	C136	C-CER,CHIP	SA
2203-006260	C201	C-CER,CHIP	SA
2203-006260	C202	C-CER,CHIP	SA
2203-006260	C348	C-CER,CHIP	SA
2203-006260	C349	C-CER,CHIP	SA

SEC Code	Design LOC	Discription	STATUS
2203-006305	C120	C-CER,CHIP	SA
2203-006324	C316	C-CER,CHIP	SA
2203-006348	C102	C-CER,CHIP	SA
2203-006348	C134	C-CER,CHIP	SA
2203-006361	C178	C-CER,CHIP	SA
2203-006423	C103	C-CER,CHIP	SA
2203-006423	C107	C-CER,CHIP	SA
2203-006423	C114	C-CER,CHIP	SA
2203-006423	C115	C-CER,CHIP	SA
2203-006423	C313	C-CER,CHIP	SA
2203-006423	C318	C-CER,CHIP	SA
2203-006562	C105	C-CER,CHIP	SA
2203-006562	C109	C-CER,CHIP	SA
2203-006562	C112	C-CER,CHIP	SA
2203-006562	C113	C-CER,CHIP	SA
2203-006562	C118	C-CER,CHIP	SA
2203-006562	C132	C-CER,CHIP	SA
2203-006562	C135	C-CER,CHIP	SA
2203-006562	C177	C-CER,CHIP	SA
2203-006562	C219	C-CER,CHIP	SA
2203-006562	C300	C-CER,CHIP	SA
2203-006562	C302	C-CER,CHIP	SA
2203-006562	C305	C-CER,CHIP	SA
2203-006562	C307	C-CER,CHIP	SA
2203-006562	C317	C-CER,CHIP	SA
2203-006562	C326	C-CER,CHIP	SA
2203-006562	C327	C-CER,CHIP	SA
2203-006562	C328	C-CER,CHIP	SA
2203-006562	C329	C-CER,CHIP	SA
2203-006562	C331	C-CER,CHIP	SA
2203-006562	C333	C-CER,CHIP	SA
2203-006562	C336	C-CER,CHIP	SA
2203-006562	C338	C-CER,CHIP	SA
2203-006562	C343	C-CER,CHIP	SA

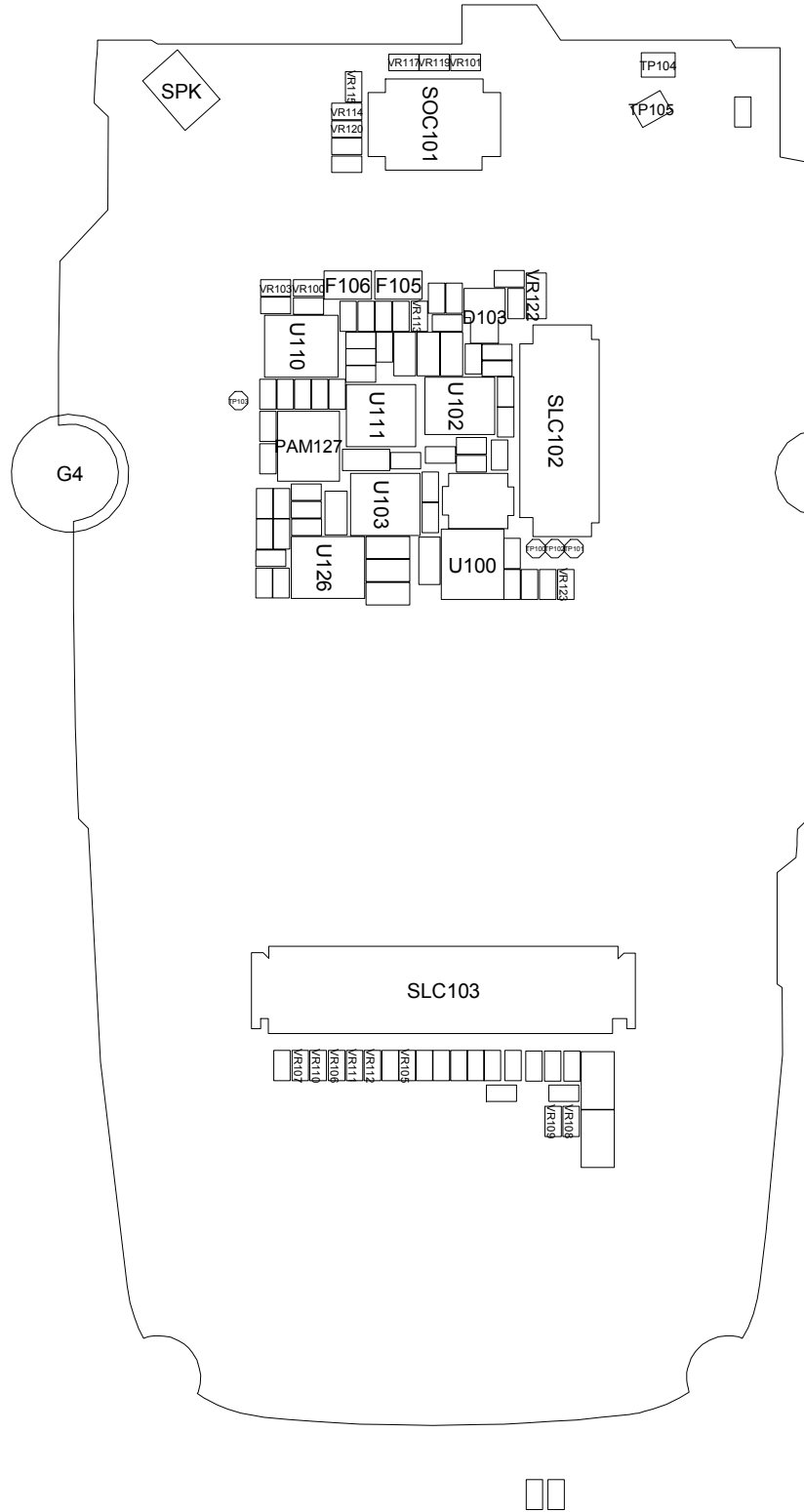
SEC Code	Design LOC	Discription	STATUS
2203-006562	C350	C-CER,CHIP	SA
2203-006562	C355	C-CER,CHIP	SA
2203-006562	C365	C-CER,CHIP	SA
2203-006562	C367	C-CER,CHIP	SA
2203-006562	C368	C-CER,CHIP	SA
2203-006562	C369	C-CER,CHIP	SA
2203-006562	C390	C-CER,CHIP	SA
2203-006562	C393	C-CER,CHIP	SA
2203-006626	C360	C-CER,CHIP	SA
2203-006626	C362	C-CER,CHIP	SA
2203-006824	C324	C-CER,CHIP	SA
2203-006824	C332	C-CER,CHIP	SA
2203-006824	C347	C-CER,CHIP	SA
2203-006824	C357	C-CER,CHIP	SA
2203-006824	C374	C-CER,CHIP	SA
2203-006824	C375	C-CER,CHIP	SA
2203-006825	C125	C-CER,CHIP	SA
2203-006825	C126	C-CER,CHIP	SA
2203-006825	C148	C-CER,CHIP	SA
2203-006825	TA304	C-CER,CHIP	SA
2203-006825	TA305	C-CER,CHIP	SA
2203-006838	C121	C-CER,CHIP	SA
2203-006838	C122	C-CER,CHIP	SA
2203-006838	C154	C-CER,CHIP	SA
2203-006838	C203	C-CER,CHIP	SA
2203-006838	C210	C-CER,CHIP	SA
2203-006838	C306	C-CER,CHIP	SA
2203-006838	C385	C-CER,CHIP	SA
2203-006838	C394	C-CER,CHIP	SA
2203-006838	C396	C-CER,CHIP	SA
2203-006847	C131	C-CER,CHIP	SA
2203-006847	C132	C-CER,CHIP	SA
2404-001225	TA307	C-TA,CHIP	SA
2404-001225	TA308	C-TA,CHIP	SA

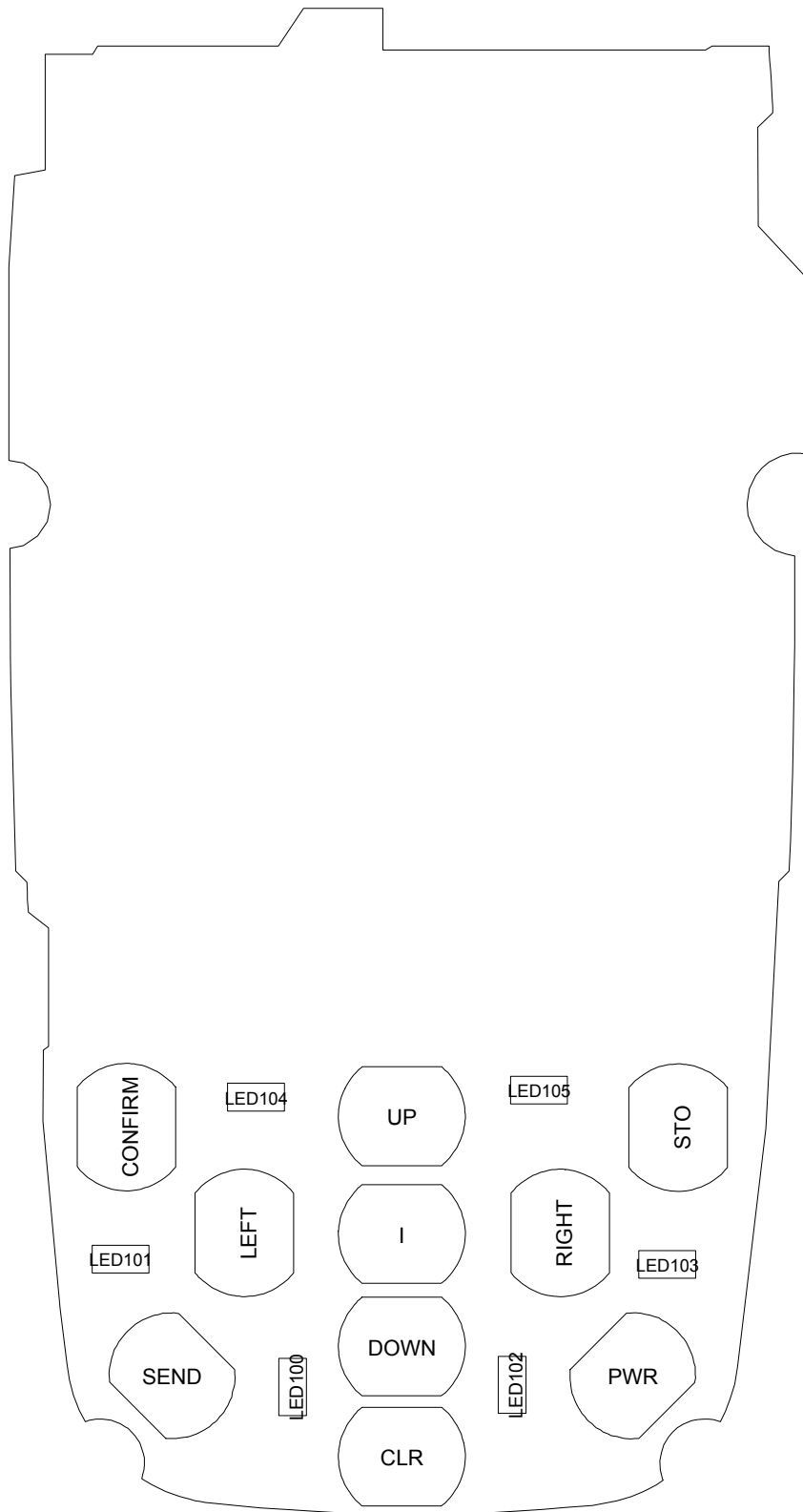
SEC Code	Design LOC	Discription	STATUS
2404-001226	TA309	C-TA,CHIP	SA
2404-001268	C115	C-TA,CHIP	SA
2404-001268	C116	C-TA,CHIP	SA
2404-001281	C153	C-TA,CHIP	SA
2404-001352	TA303	C-TA,CHIP	SA
2404-001381	C147	C-TA,CHIP	SA
2404-001381	C149	C-TA,CHIP	SA
2404-001383	C129	C-TA,CHIP	SA
2404-001383	C155	C-TA,CHIP	SA
2404-001406	TA101	C-TA,CHIP	SA
2404-001413	TA306	C-TA,CHIP	SA
2404-001414	TA301	C-TA,CHIP	SA
2404-001414	TA302	C-TA,CHIP	SA
2503-001062	C101	C-NETWORK	SA
2503-001062	C103	C-NETWORK	SA
2503-001062	C105	C-NETWORK	SA
2503-001062	C106	C-NETWORK	SA
2503-001062	C107	C-NETWORK	SA
2503-001062	C108	C-NETWORK	SA
2503-001062	C112	C-NETWORK	SA
2703-001722	L106	INDUCTOR-SMD	SA
2703-001723	L107	INDUCTOR-SMD	SA
2703-002313	R357	INDUCTOR-SMD	SA
2703-002313	R360	INDUCTOR-SMD	SA
2703-002314	L102	INDUCTOR-SMD	SA
2703-002597	L105	INDUCTOR-SMD	SA
2703-002710	L103	INDUCTOR-SMD	SA
2703-002710	L104	INDUCTOR-SMD	SA
2703-002734	L302	INDUCTOR-SMD	SA
2703-002734	L303	INDUCTOR-SMD	SA
2703-002767	L103	INDUCTOR-SMD	SA
2801-004225	OSC300	CRYSTAL-SMD	SA
2801-004466	OSC200	CRYSTAL-SMD	SA
2809-001295	OSC101	OSCILLATOR-VCTCXO	SA

SEC Code	Design LOC	Discription	STATUS
2901-001296	F101	FILTER-EMI SMD	SA
2901-001296	F102	FILTER-EMI SMD	SA
2901-001296	F103	FILTER-EMI SMD	SA
2901-001296	F104	FILTER-EMI SMD	SA
2901-001296	F105	FILTER-EMI SMD	SA
2901-001296	F105	FILTER-EMI SMD	SA
2901-001296	F106	FILTER-EMI SMD	SA
2911-000021	DUF100	DUPLEXER-FEM	SA
3301-001342	F106	BEAD-SMD	SA
3301-001342	F200	BEAD-SMD	SA
3301-001342	L100	BEAD-SMD	SA
3301-001342	L301	BEAD-SMD	SA
3301-001342	R223	BEAD-SMD	SA
3705-001358	RFS100	CONNECTOR-COAXIAL	SA
3708-002162	SLC102	CONNECTOR-FPC/FFC/PIC	SA
3708-002170	SLC101	CONNECTOR-FPC/FFC/PIC	SA
3708-002170	SLC103	CONNECTOR-FPC/FFC/PIC	SA
3709-001384	SIM301	CONNECTOR-CARD EDGE	SA
3710-001994	IFC102	CONNECTOR-INTERFACE	SA
3711-005643	SOC101	HEADER-BOARD TO BOARD	SA
3711-005781	BTC103	CONNECTOR-BATTERY	SA
3722-002181	EAR313	JACK-EAR PHONE	SA
4202-001065	ANT101	ANTENNA-CHIP	SA
4302-001158	BAT300	BATTERY-LI(2ND)	SA
4709-001374	U103	BLUETOOTH MODULE	SA
GH09-00038A	UCP201	IC MICOM	SA



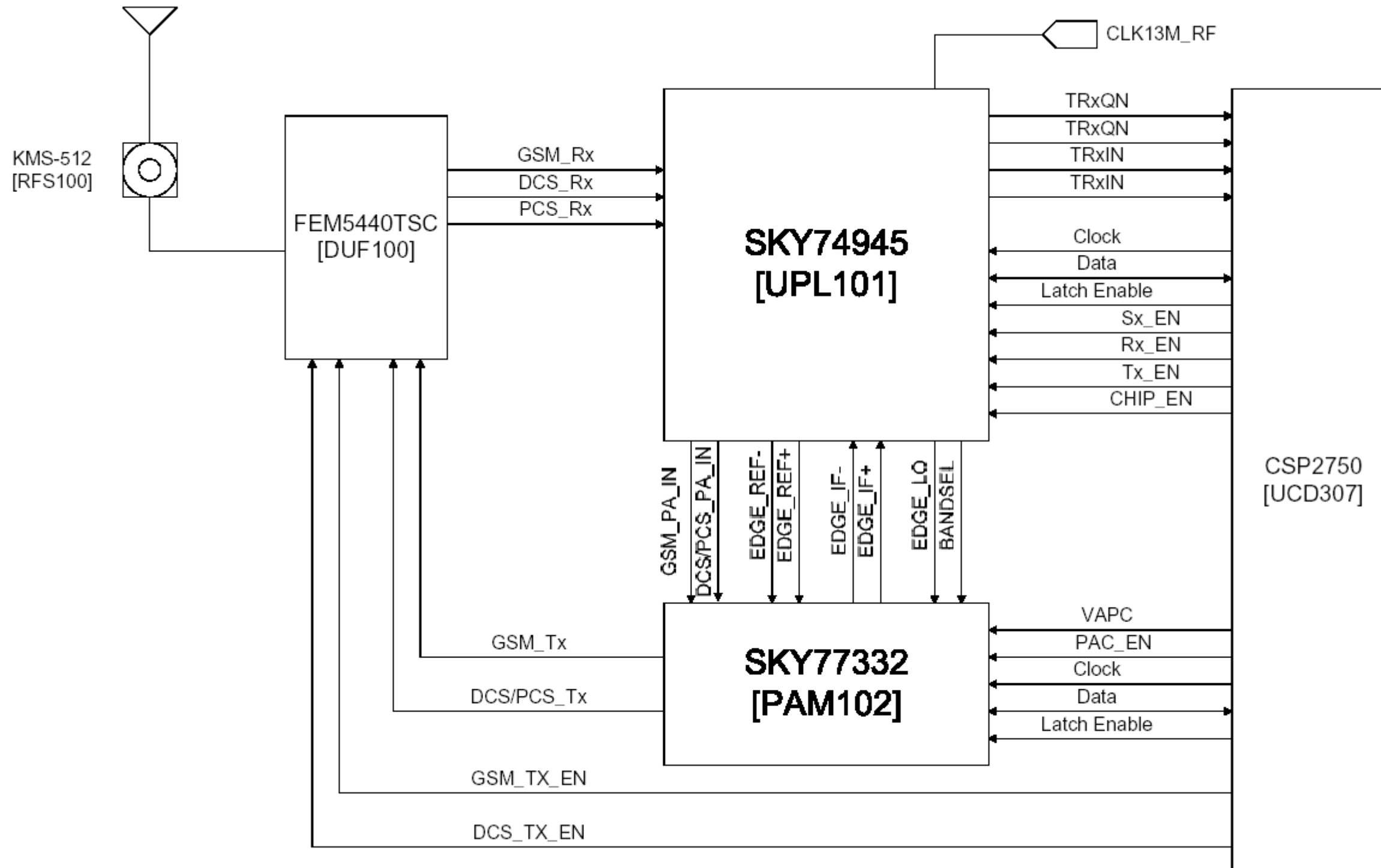
5-2. LCD



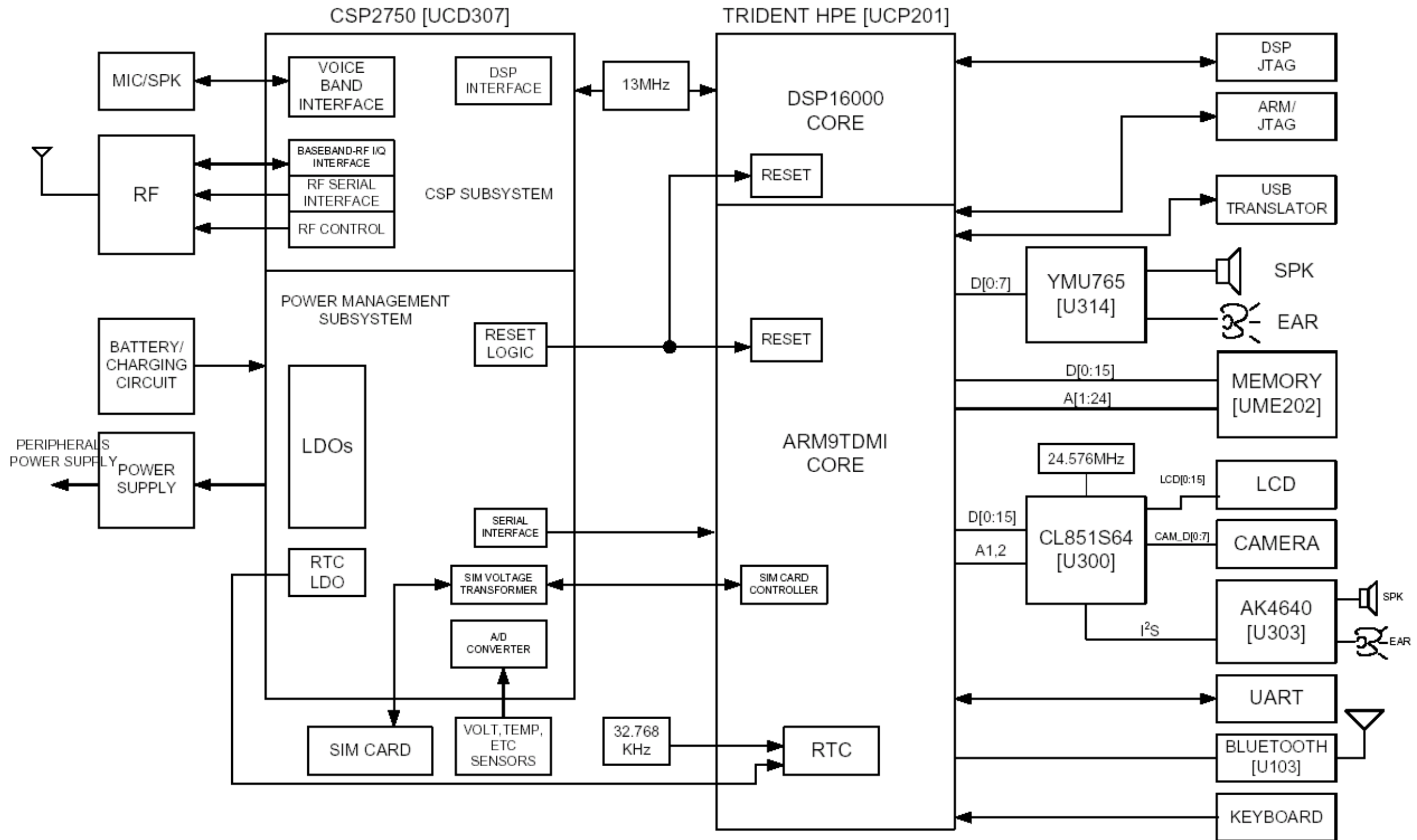


6. SGH-S400i Block Diagrams

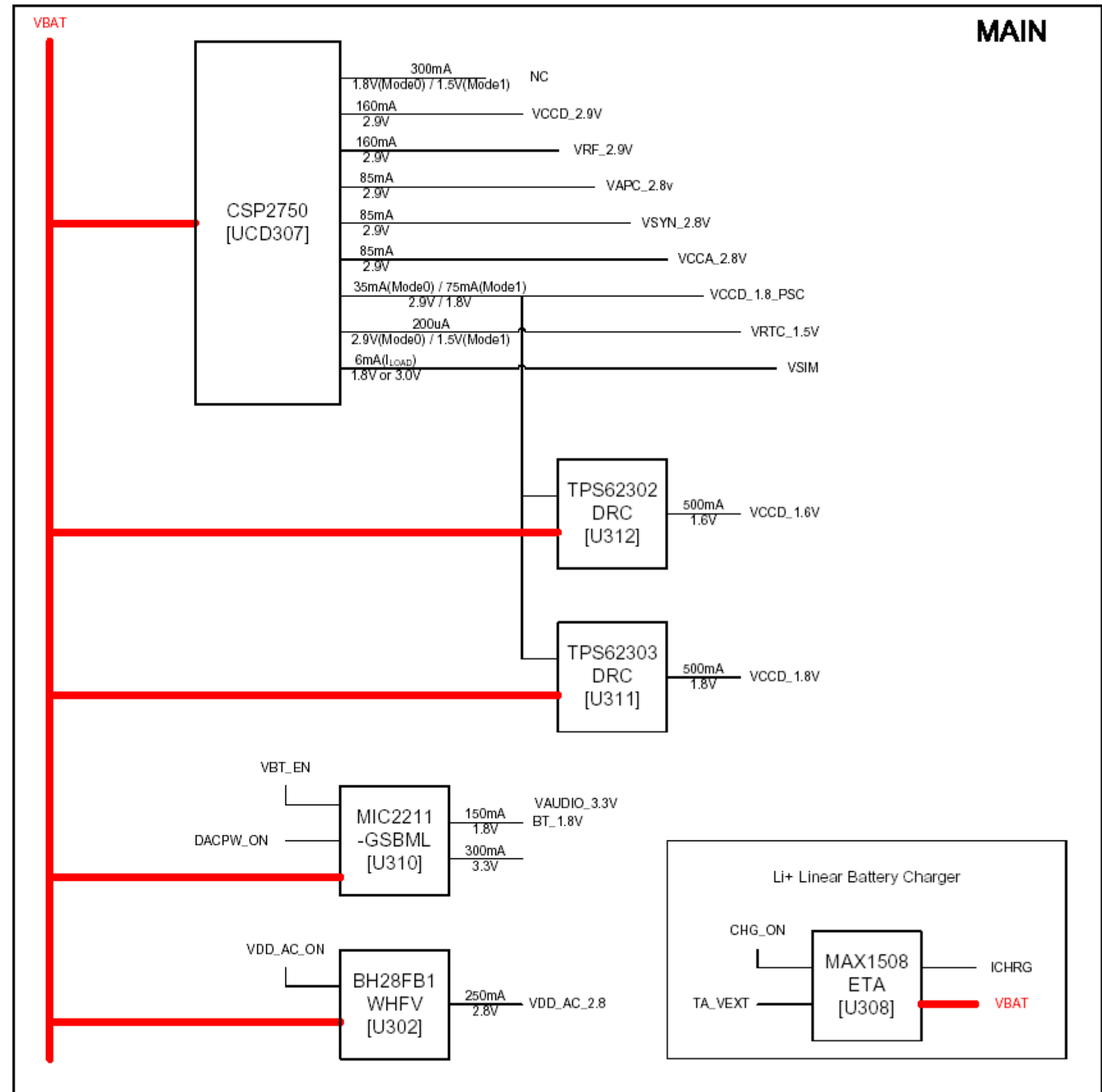
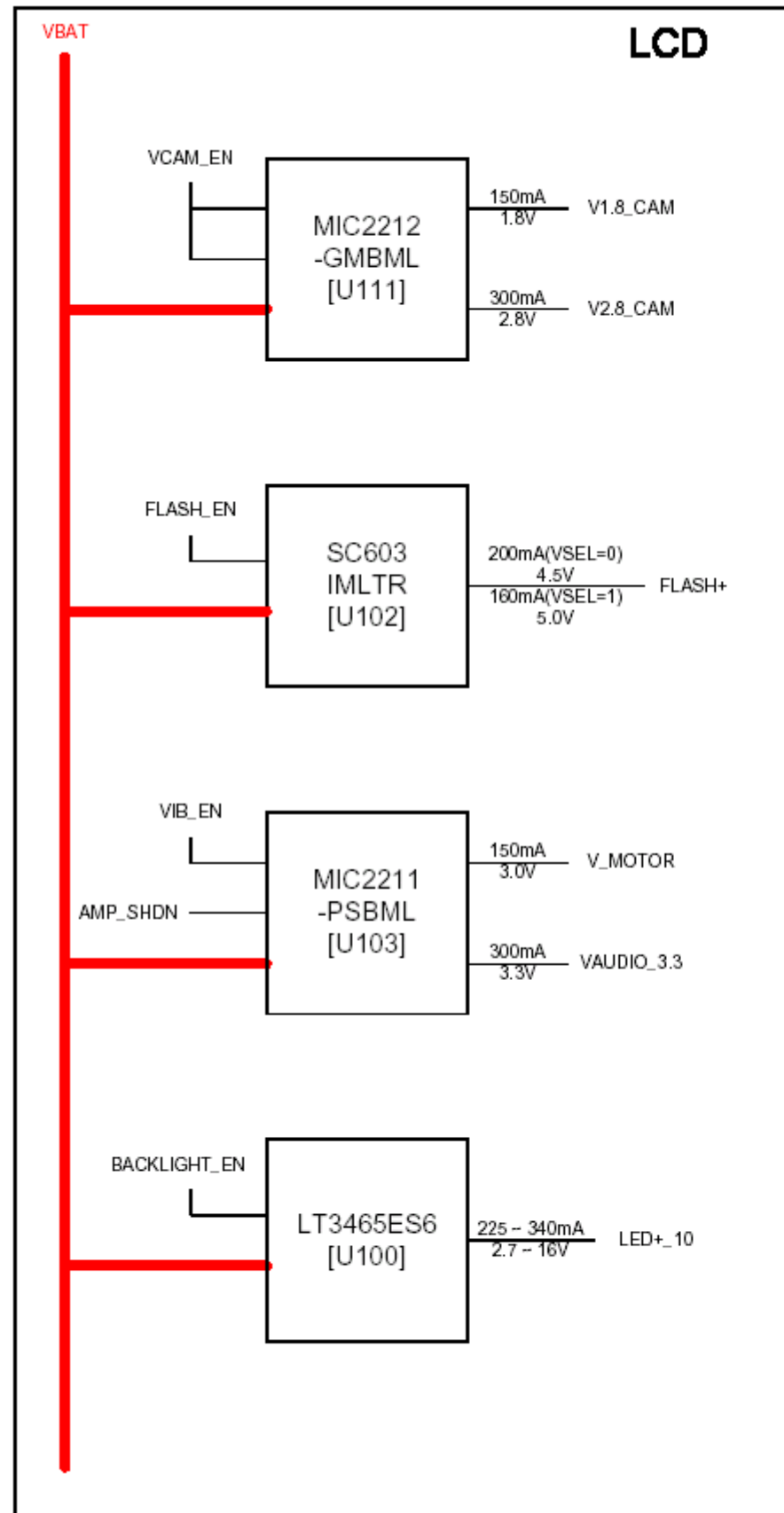
6-1. RF Block Diagram



6-2. Baseband Block Diagram



6-3. Power Block Diagram



**SAMSUNG
ELECTRONICS**

