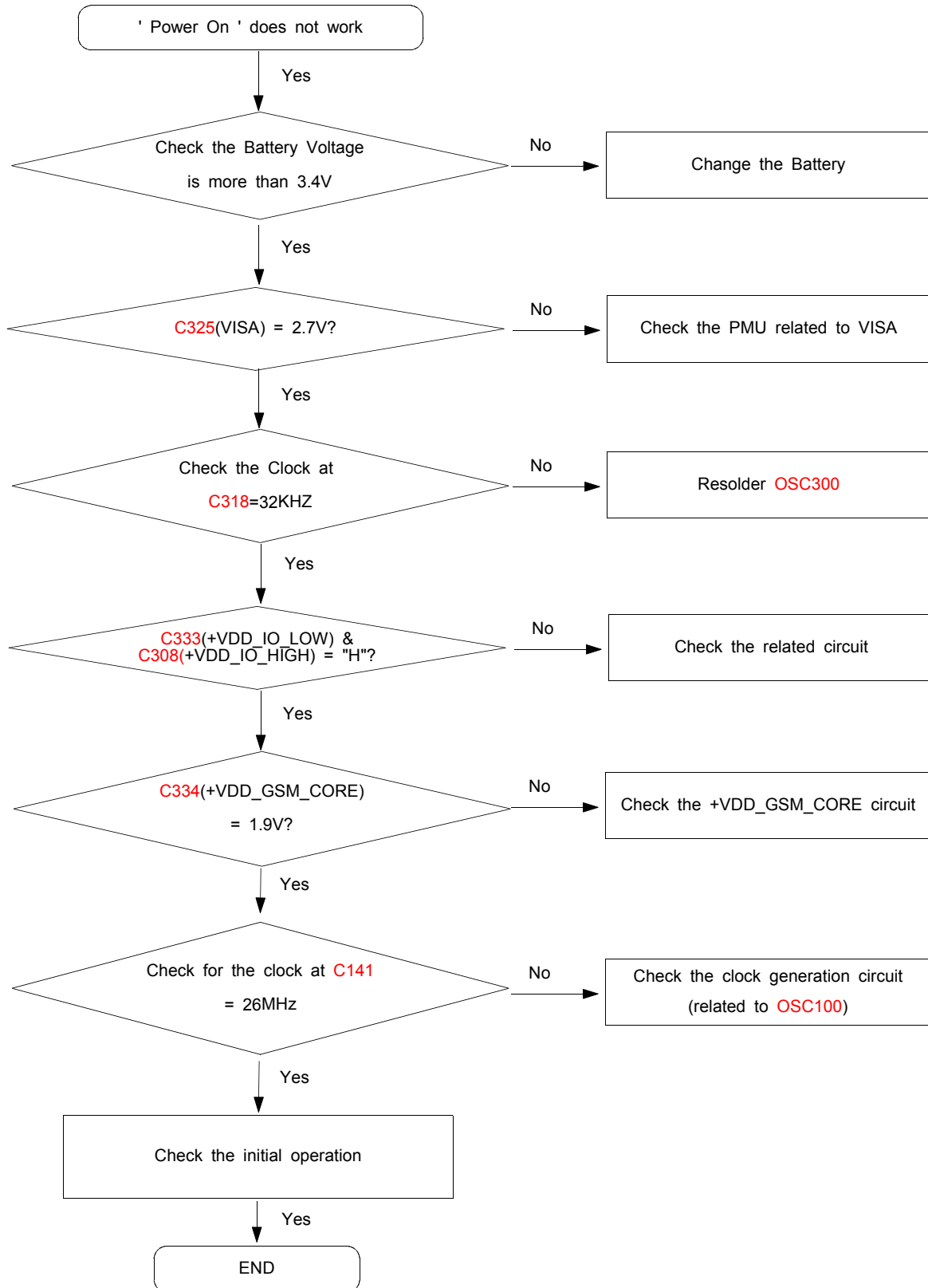
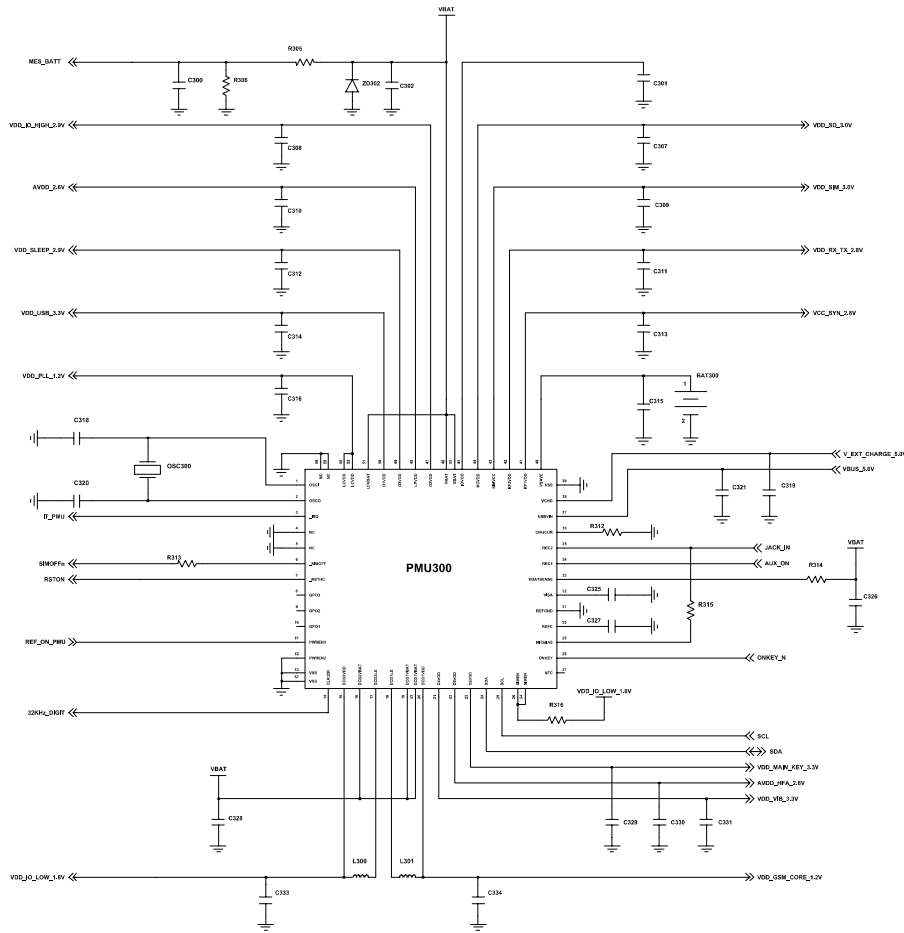


9. Поиск и устранение неполадок

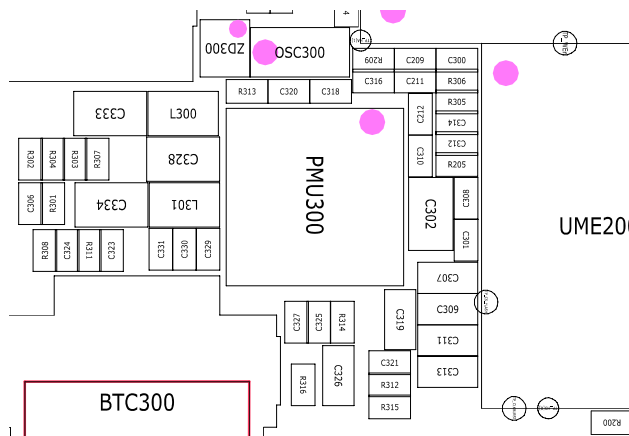
9-1. Power On



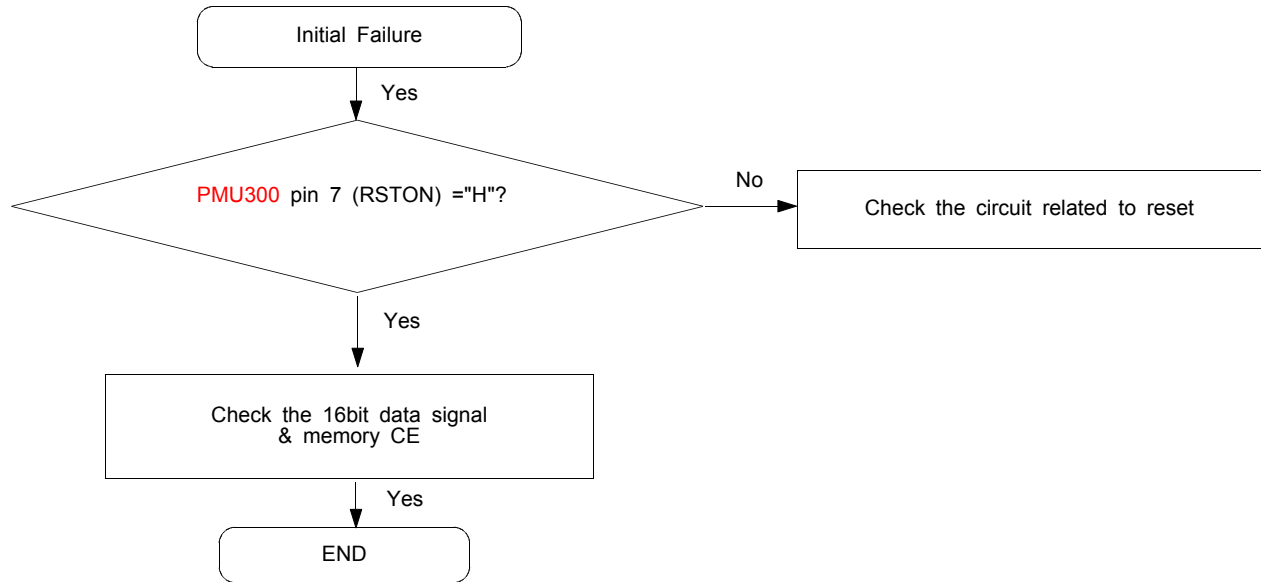


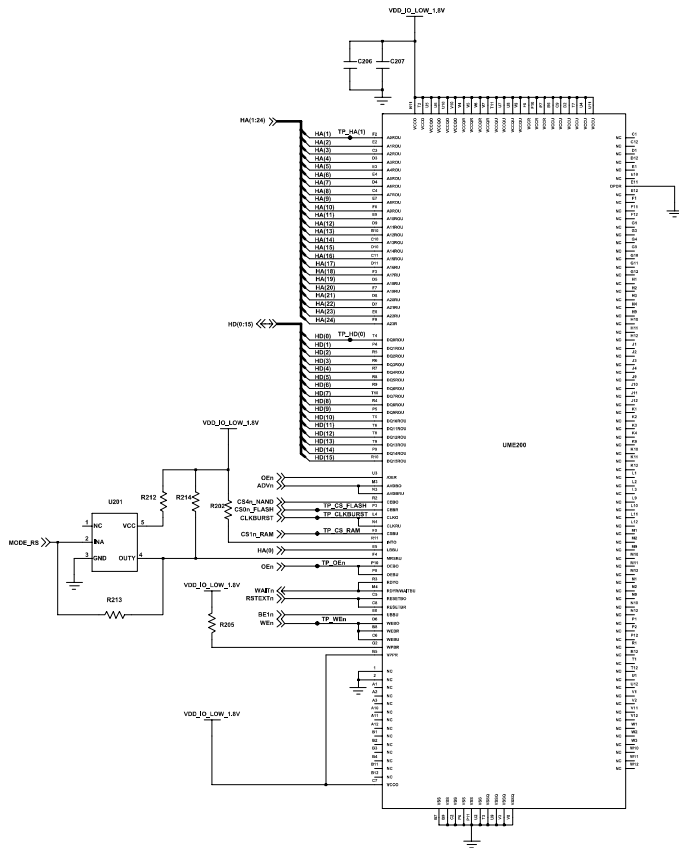
2.0V	2.0V
1.8V	1.8V
3.3V	3.3V
2.0V	2.0V
2.0V	2.0V
2.0V	2.0V
2.0V	2.0V

Power Management Unit

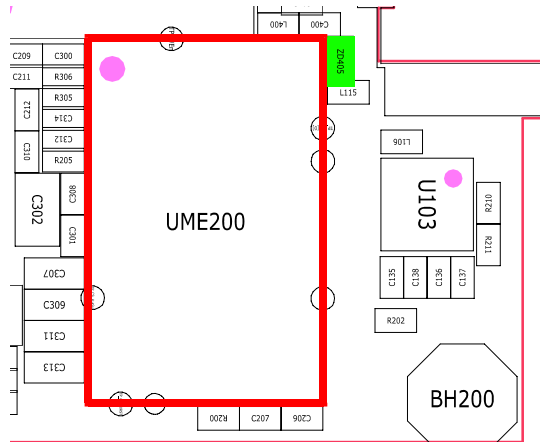


9-2. Initial

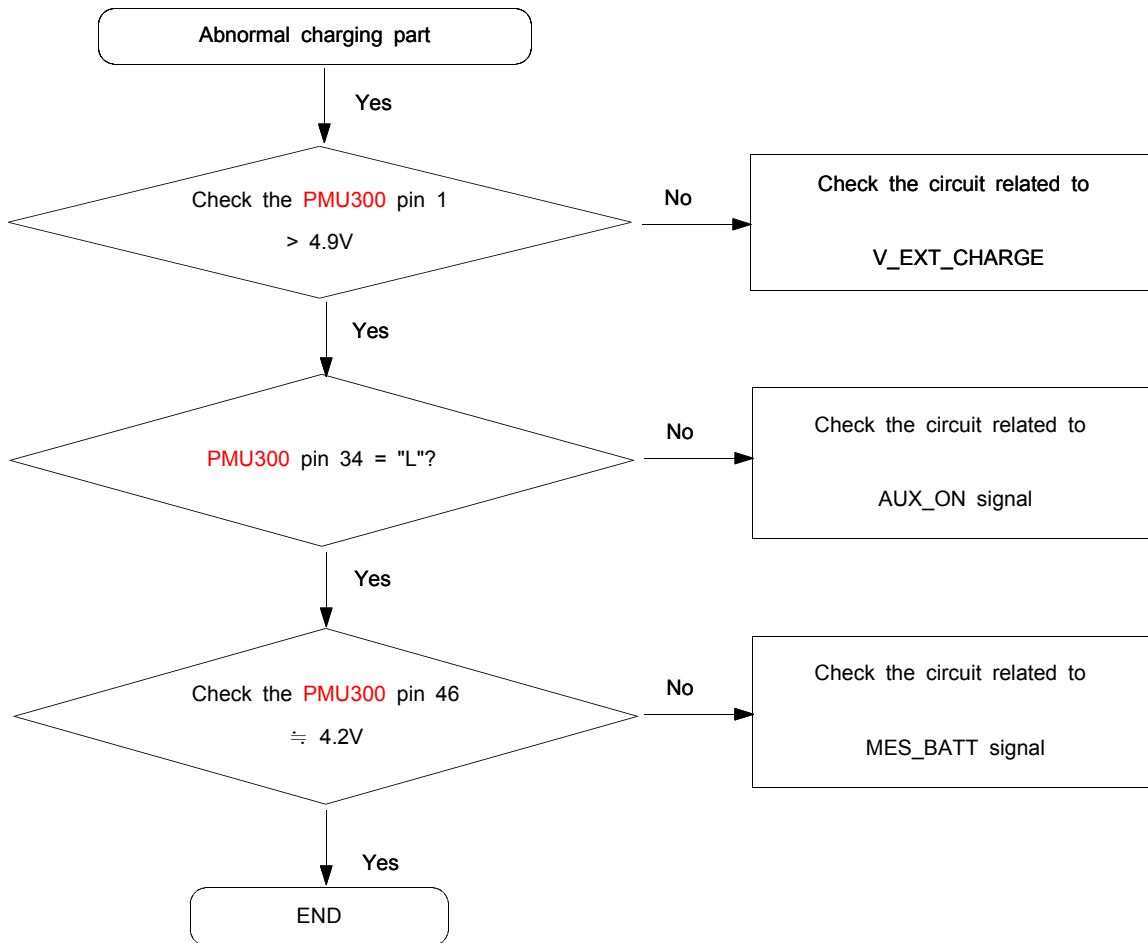


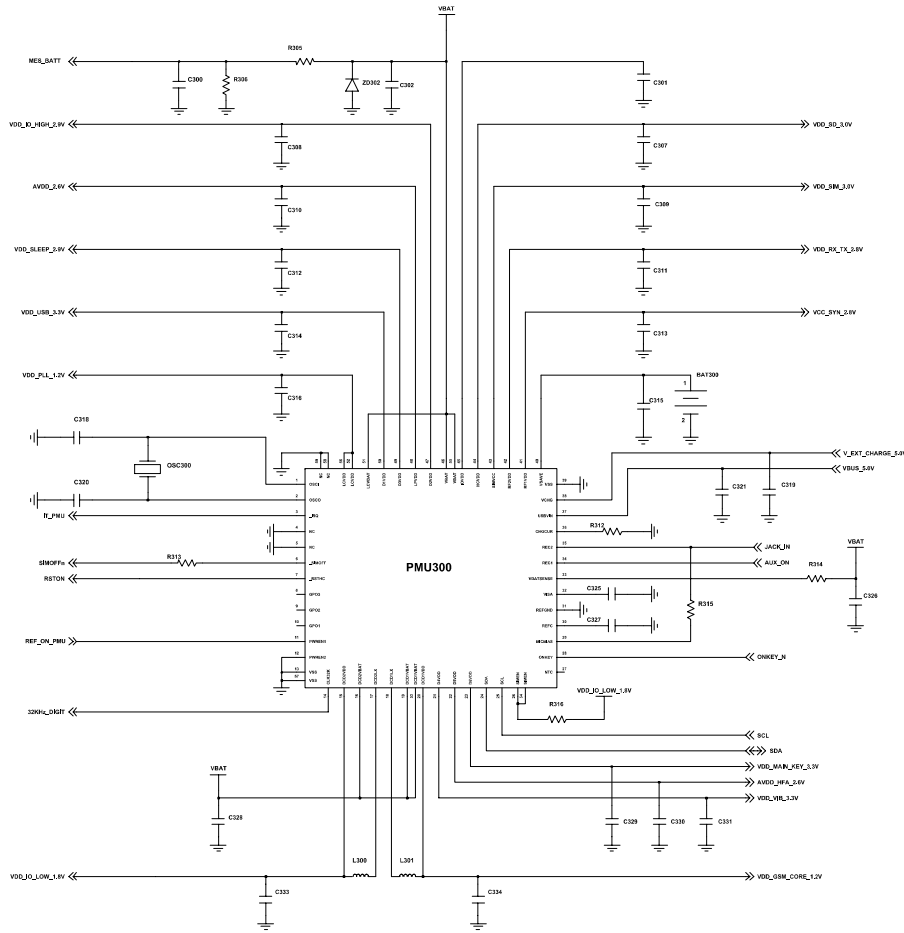


MEMORY (256NOR + 512NAND + 256 UTRAM)



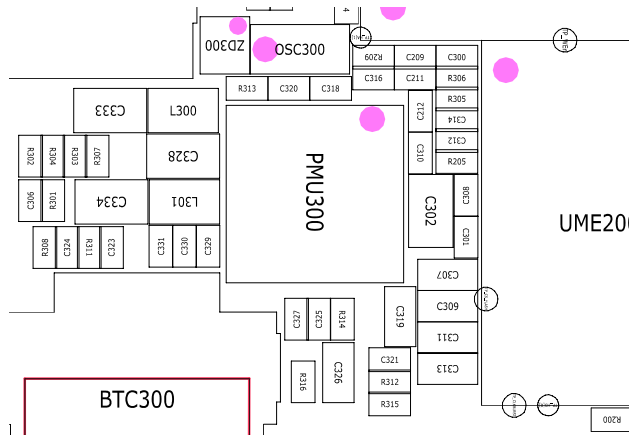
9-3. Charging Part



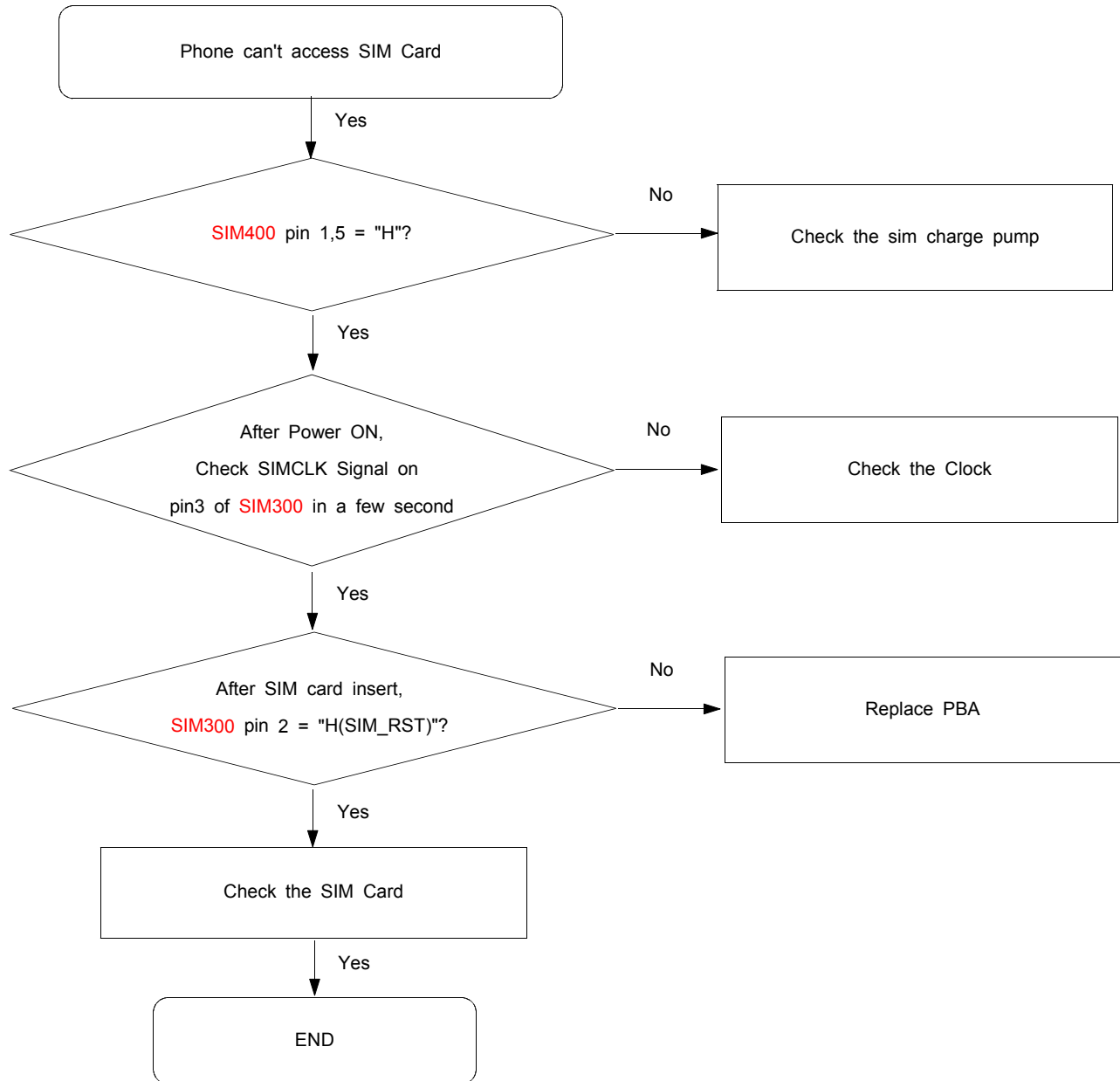


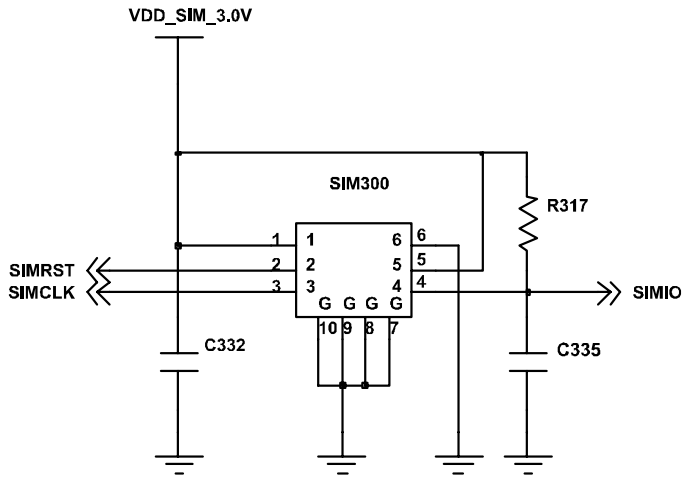
2.2V	2.2V
1.8V	2.2V
1.8V	2.2V
1V	2.0V
1V	2.0V
1V	2.0V
1V	2.0V
1V	2.0V

Power Management Unit



9-4. Sim Part

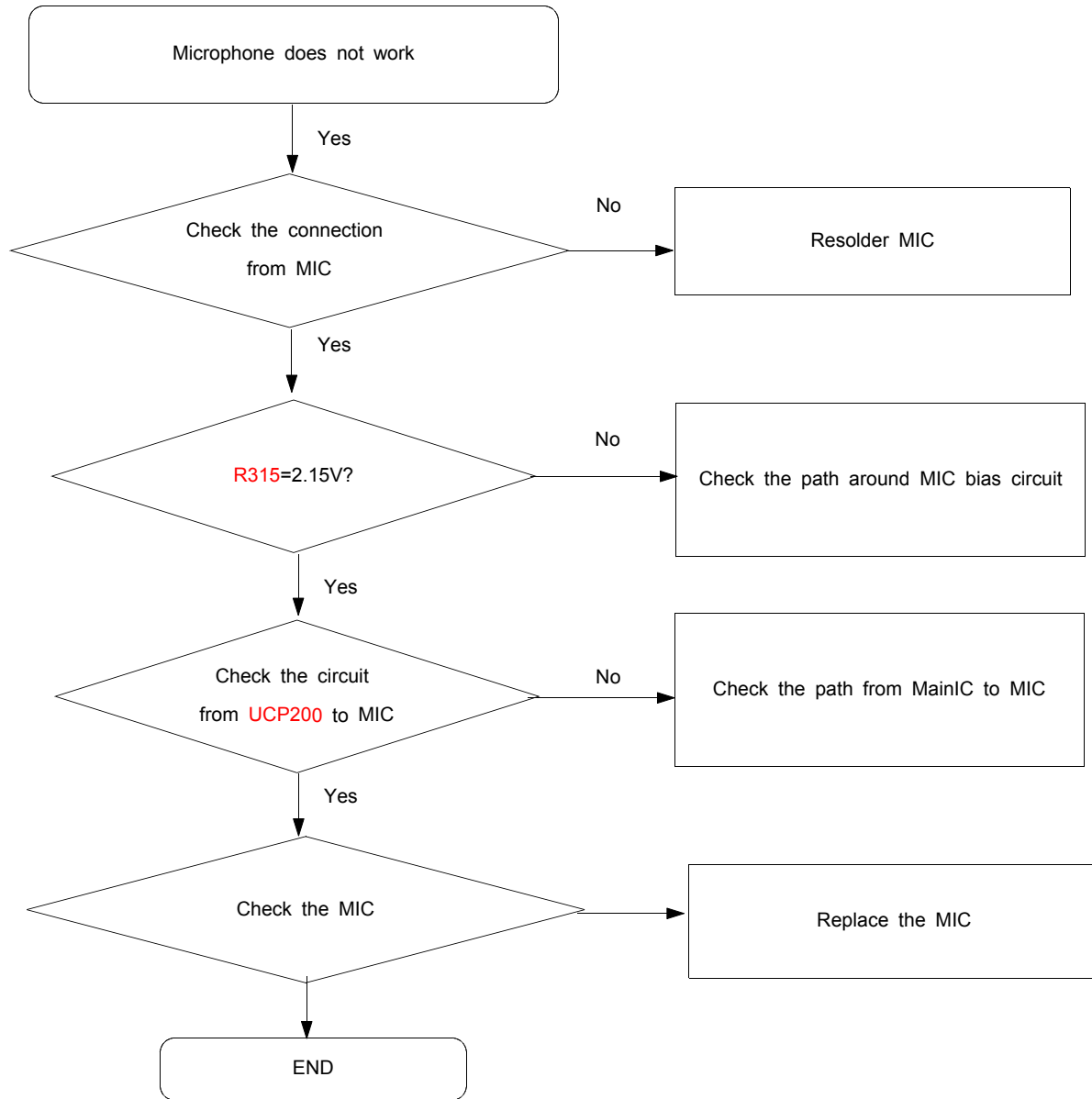




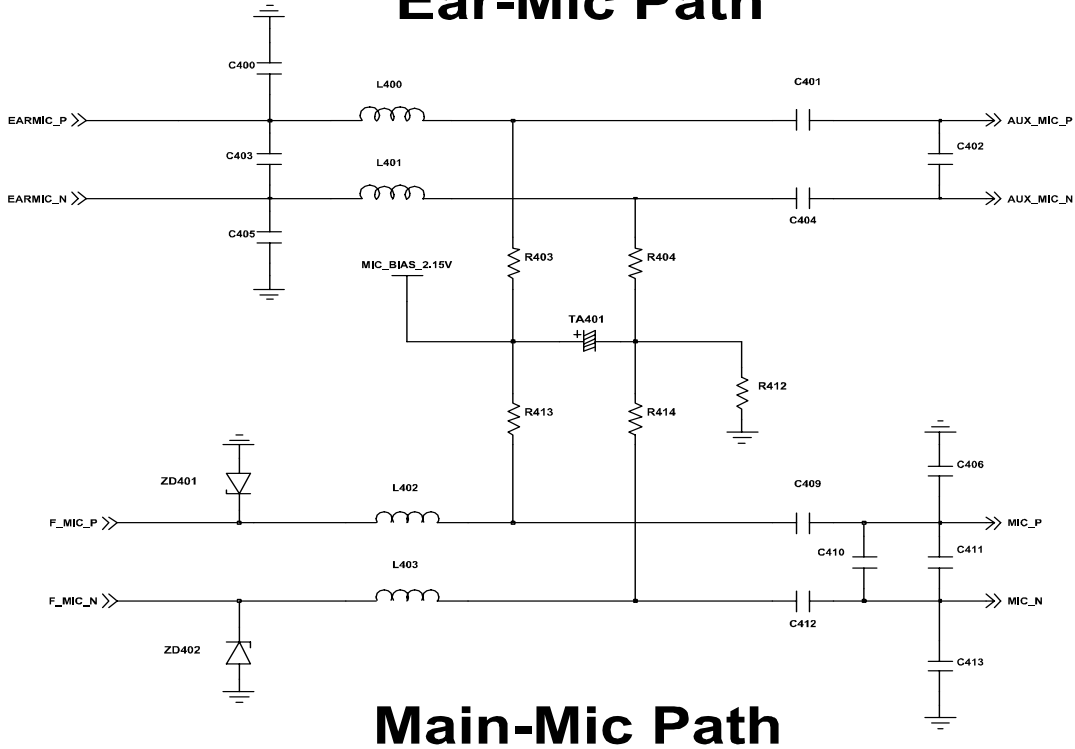
SIM CON



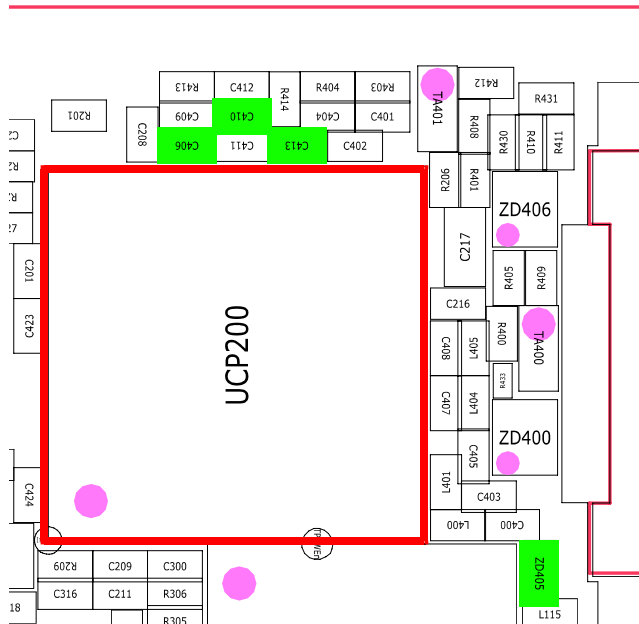
9-5. Microphone Part



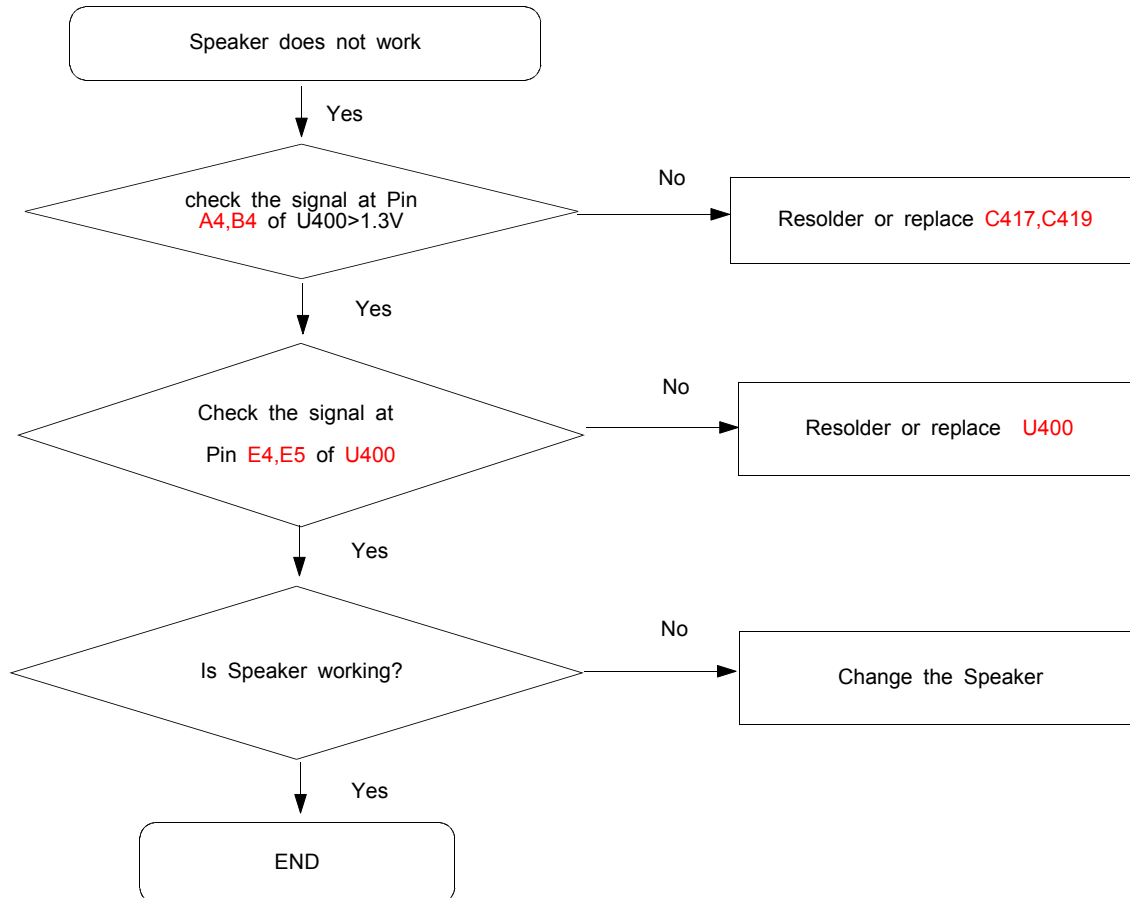
Ear-Mic Path

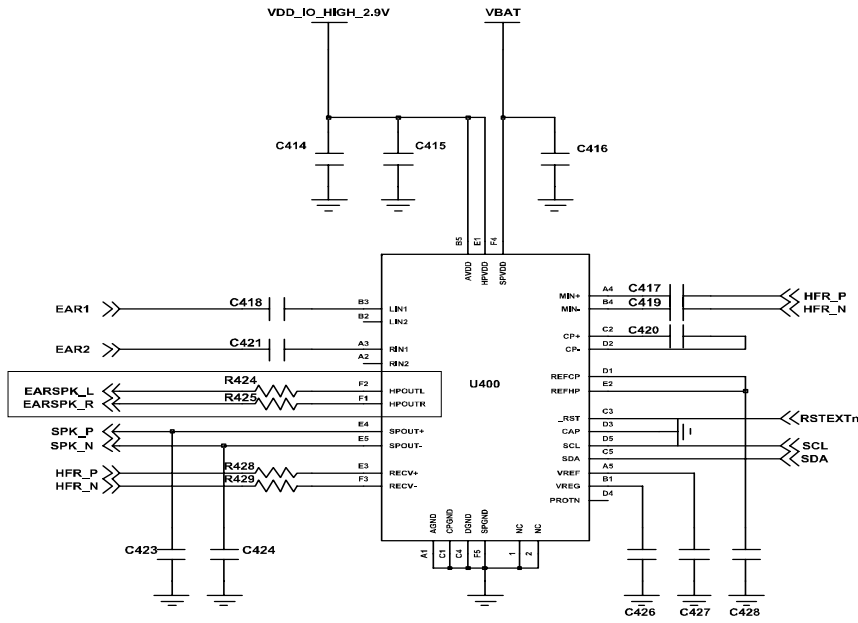


Main-Mic Path

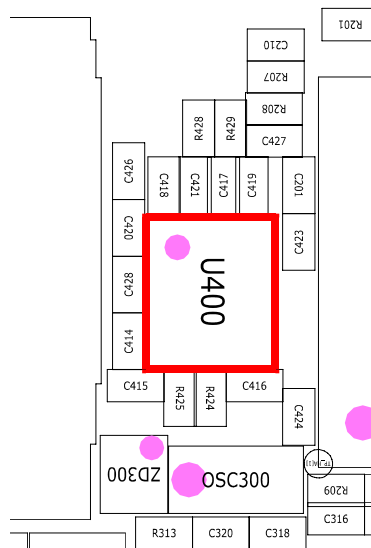


9-6. Speaker Part(Melody)

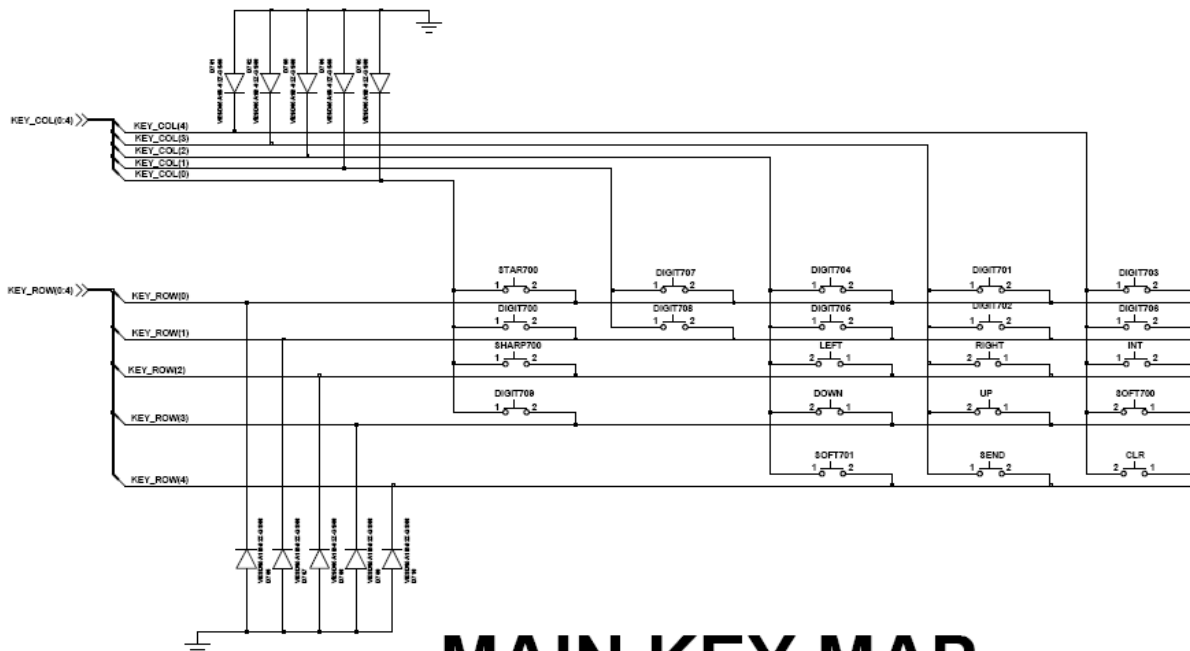
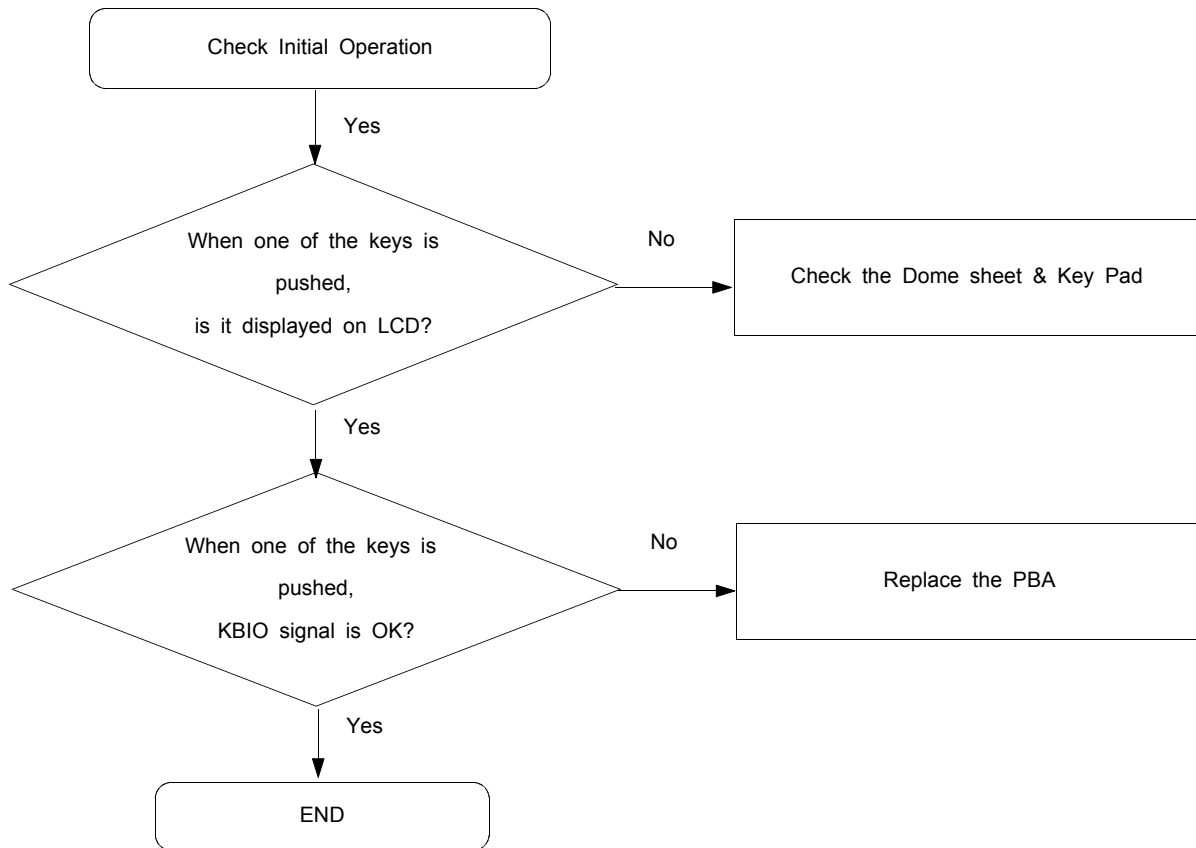




Audio AMP

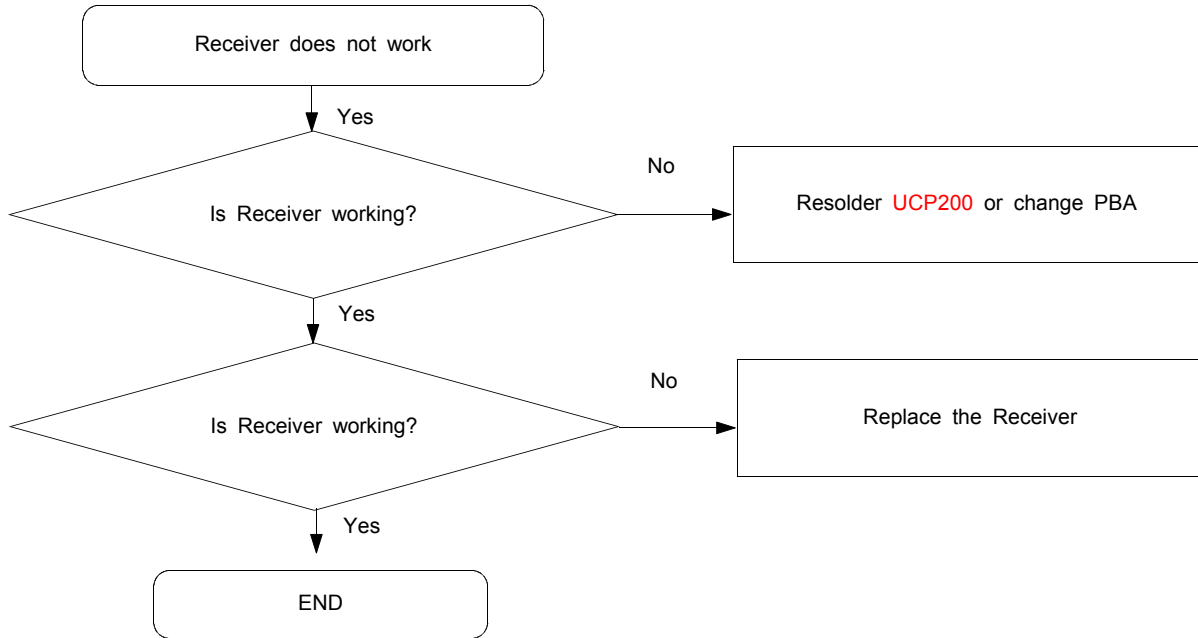


9-7. Key Data Input

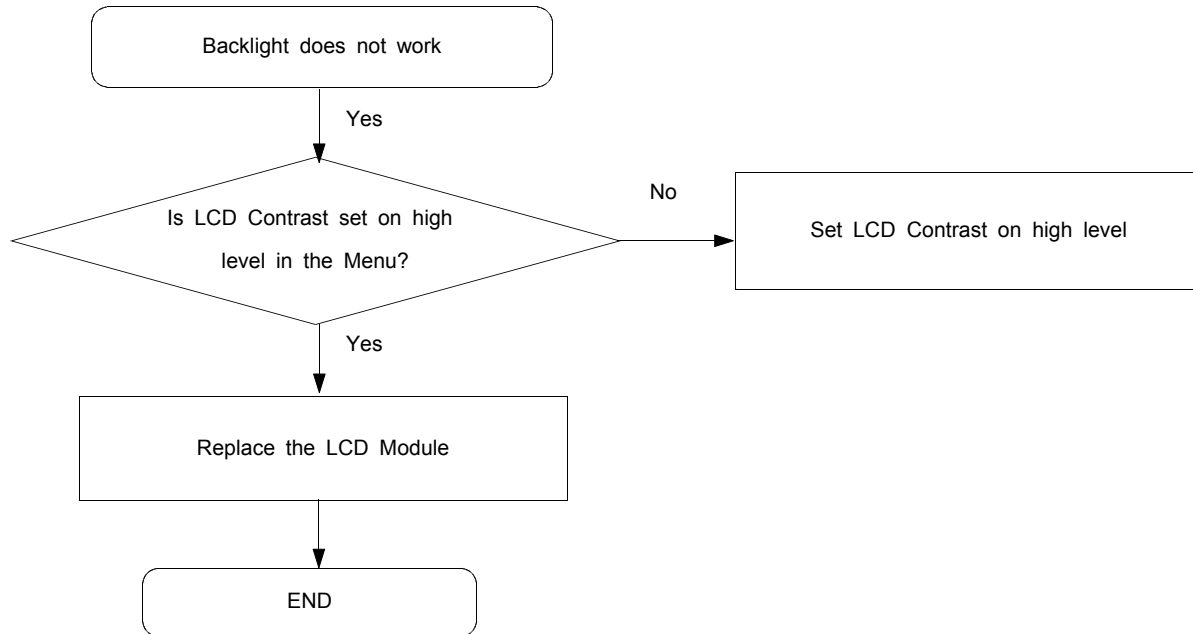


MAIN KEY MAP

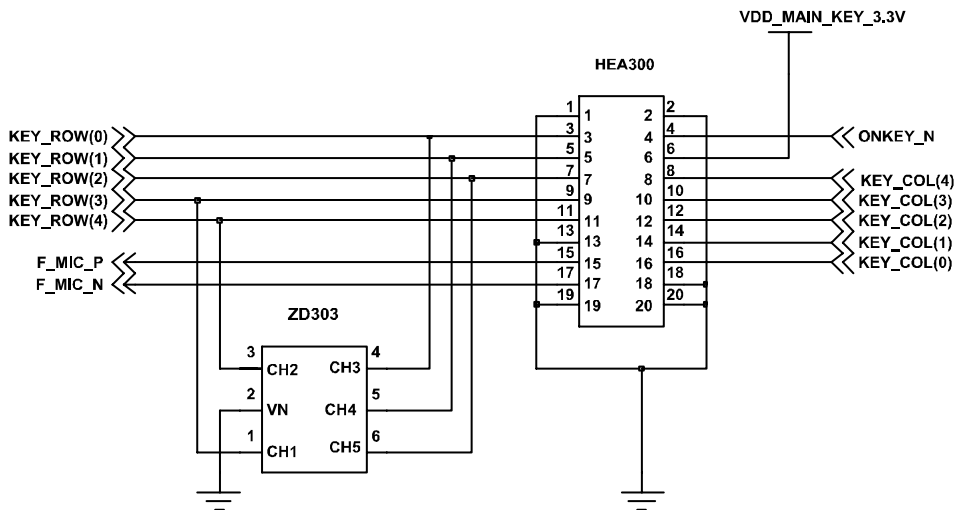
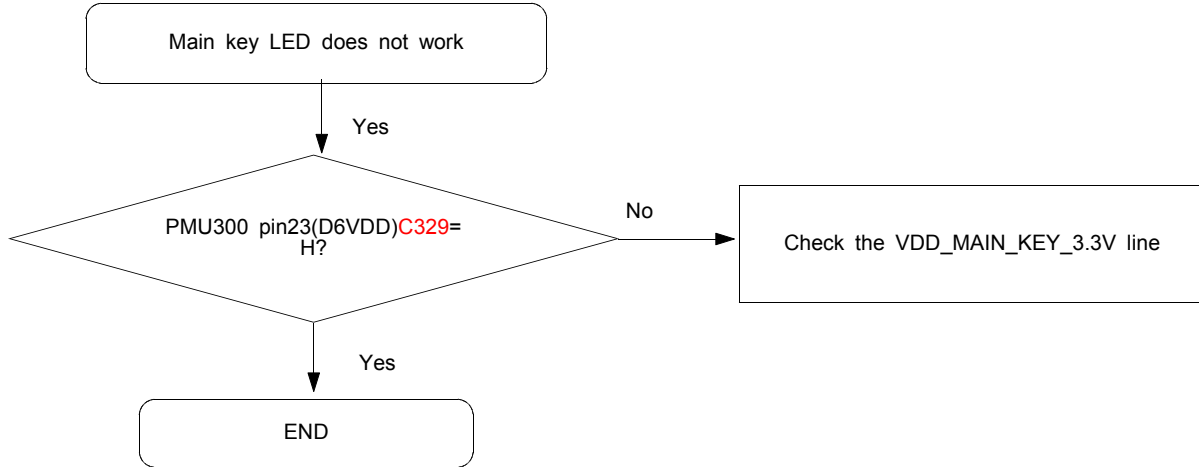
9-8. Receiver Part



9-9. Back Light (for Color Main LCD)

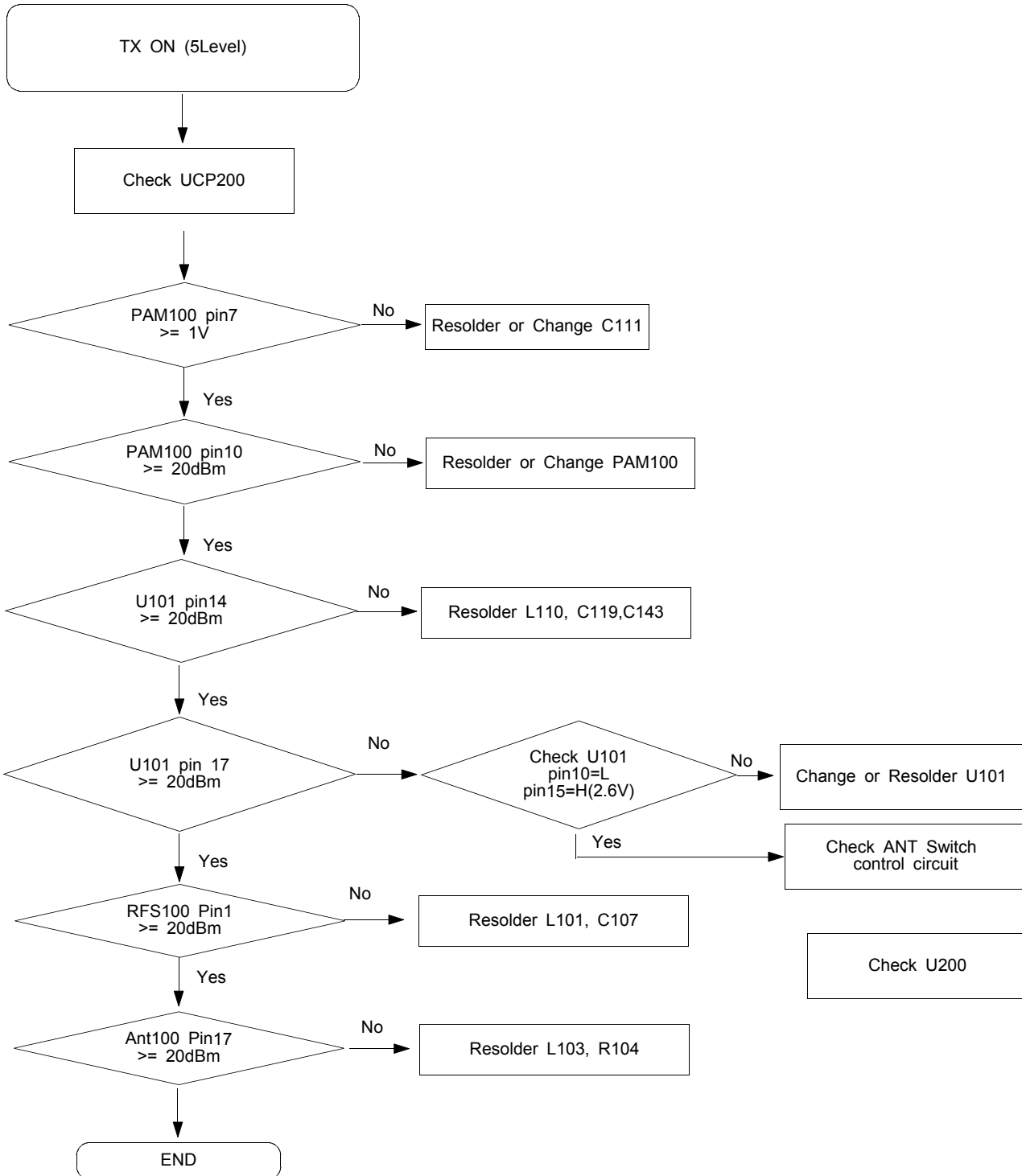


9-10. Key Back Light

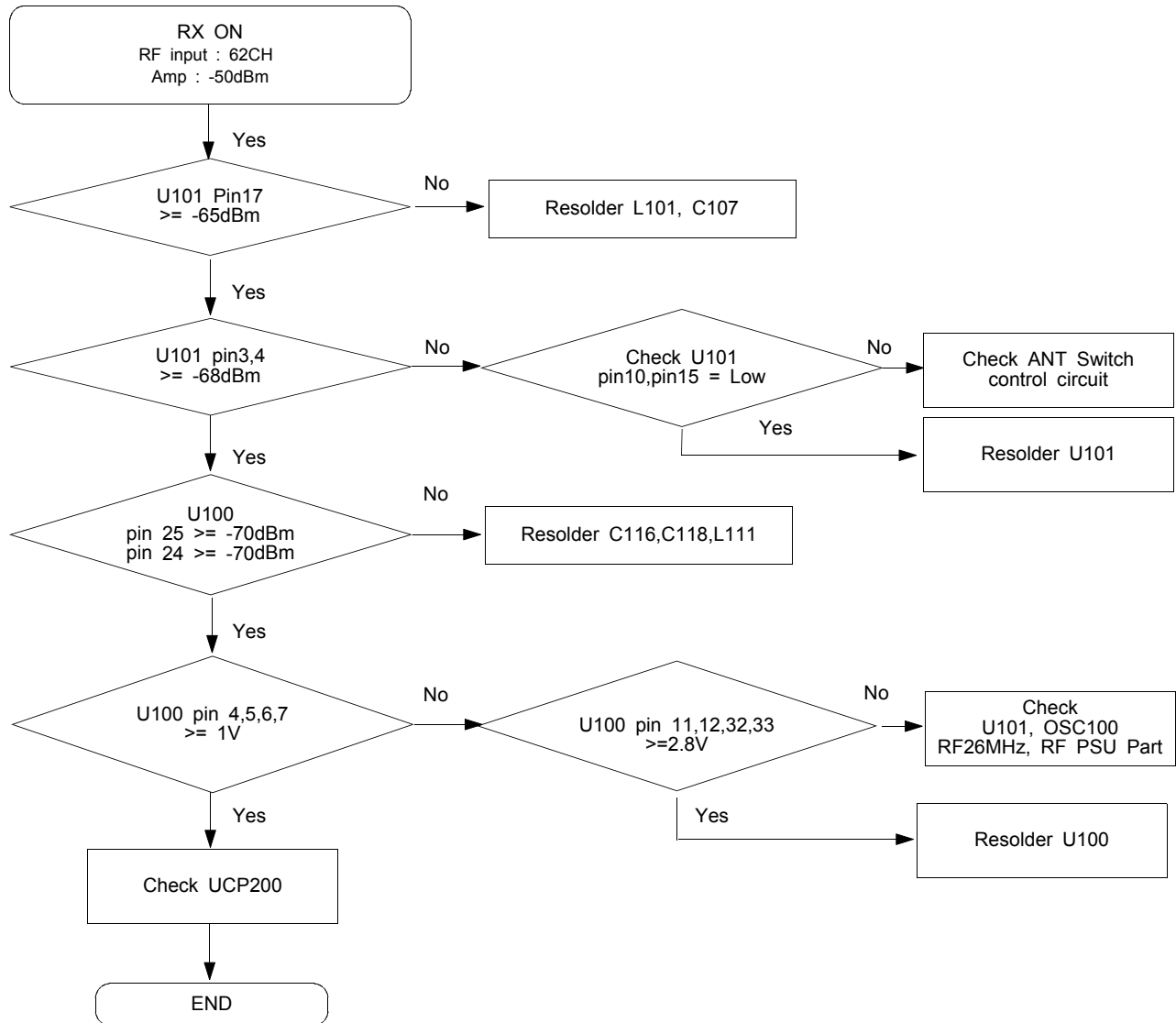


3*4 Key CON

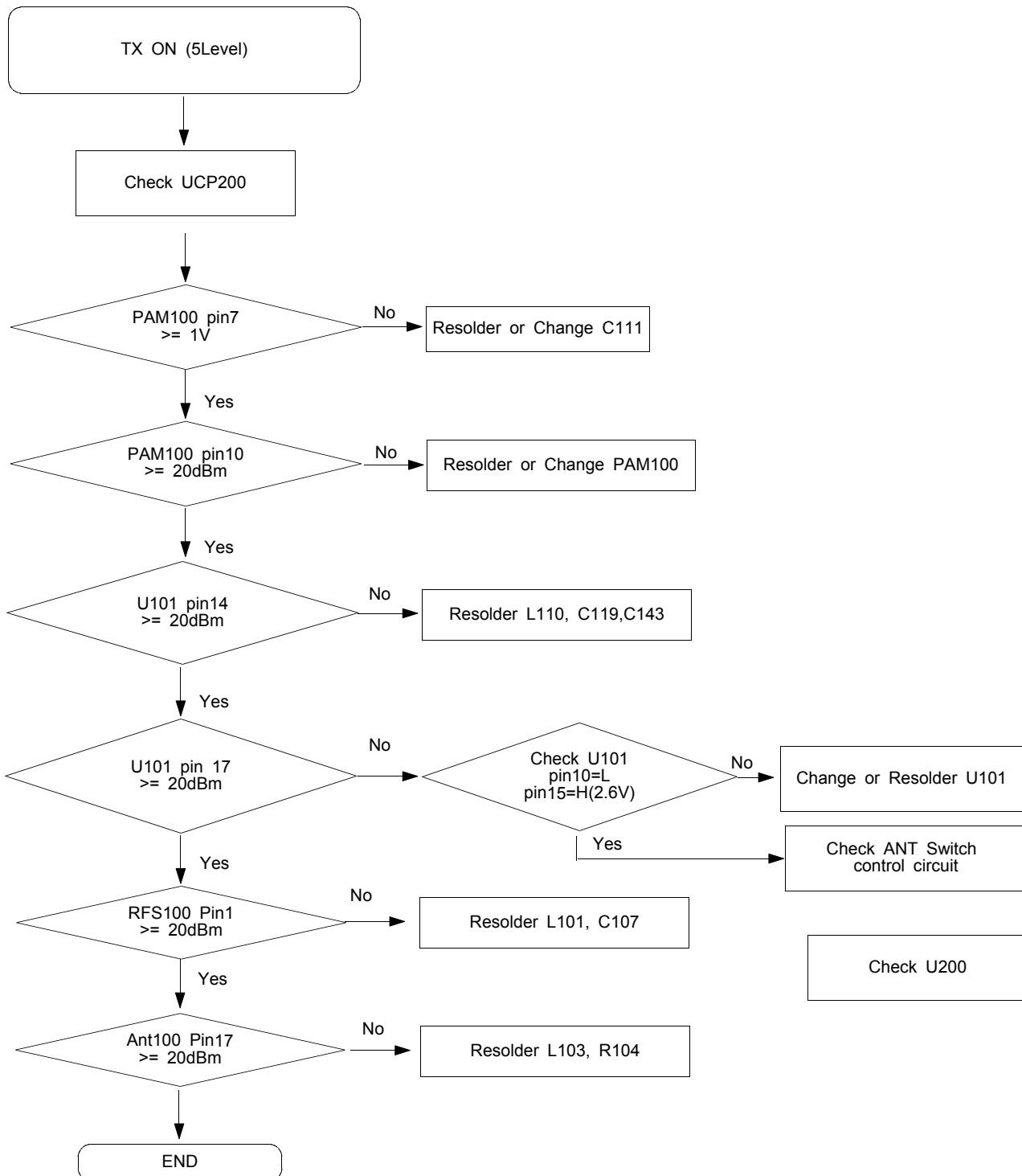
9-12. GSM850 Transmitter



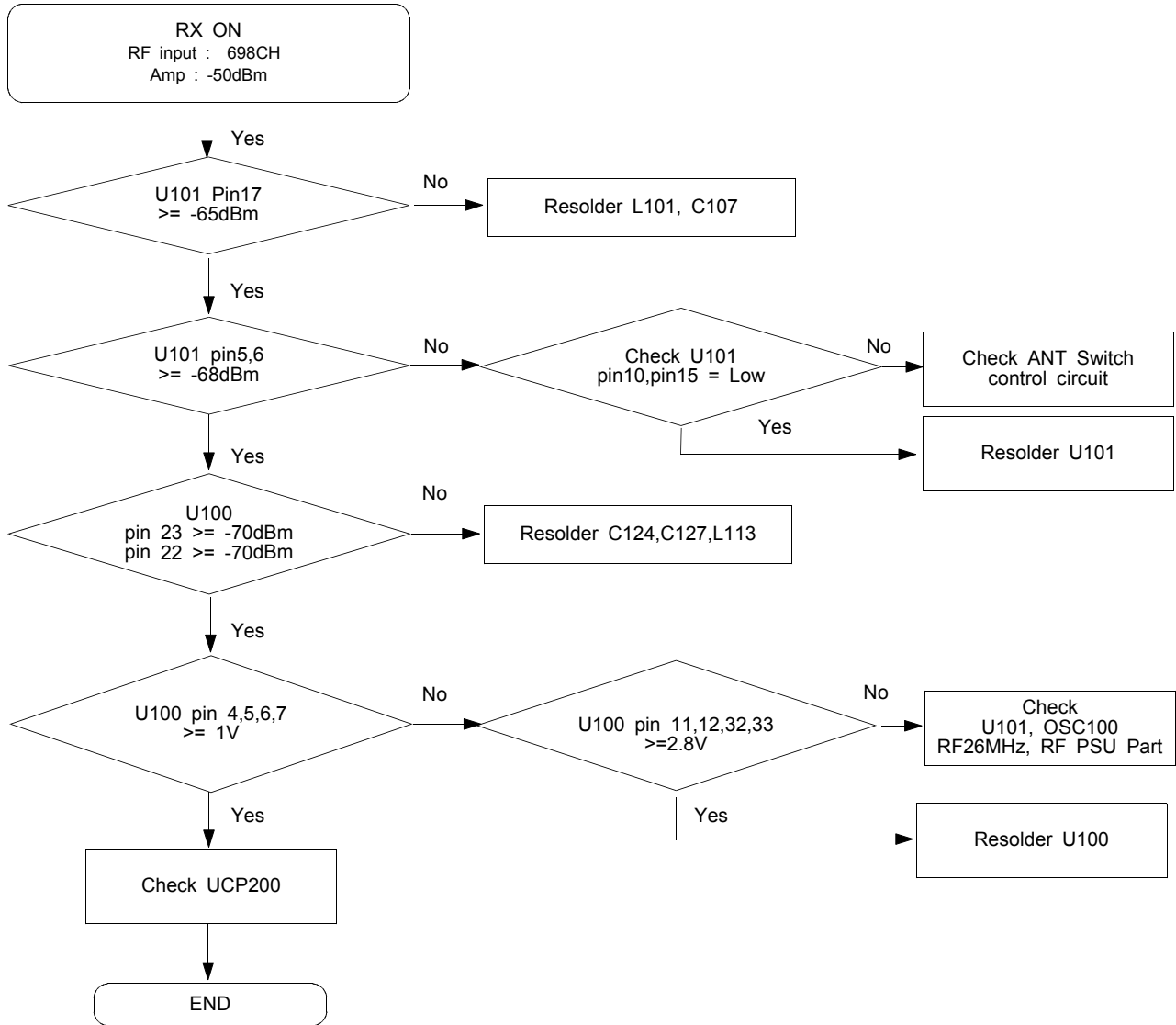
9-13. GSM900 Receiver



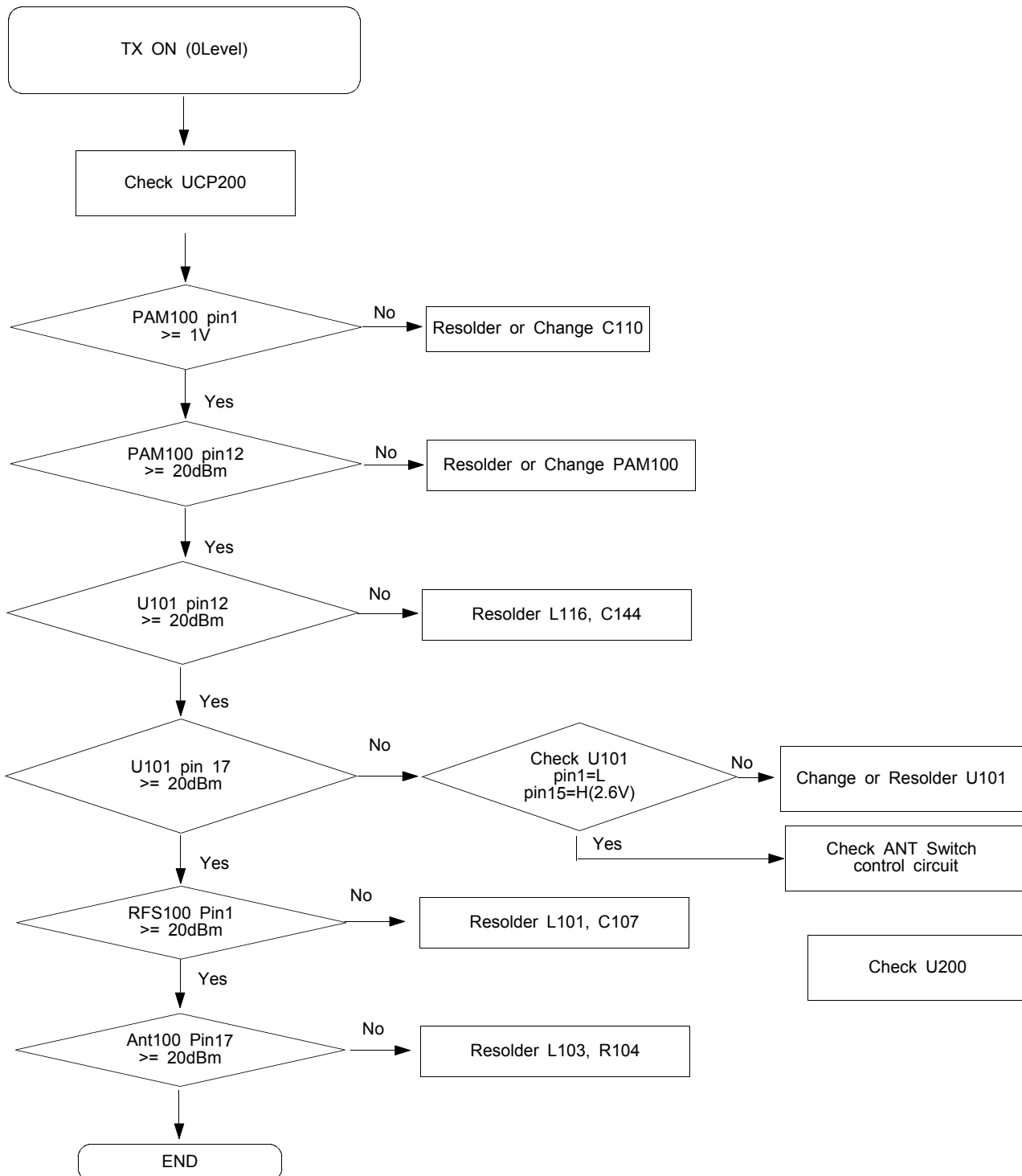
9-14. GSM900 Transmitter



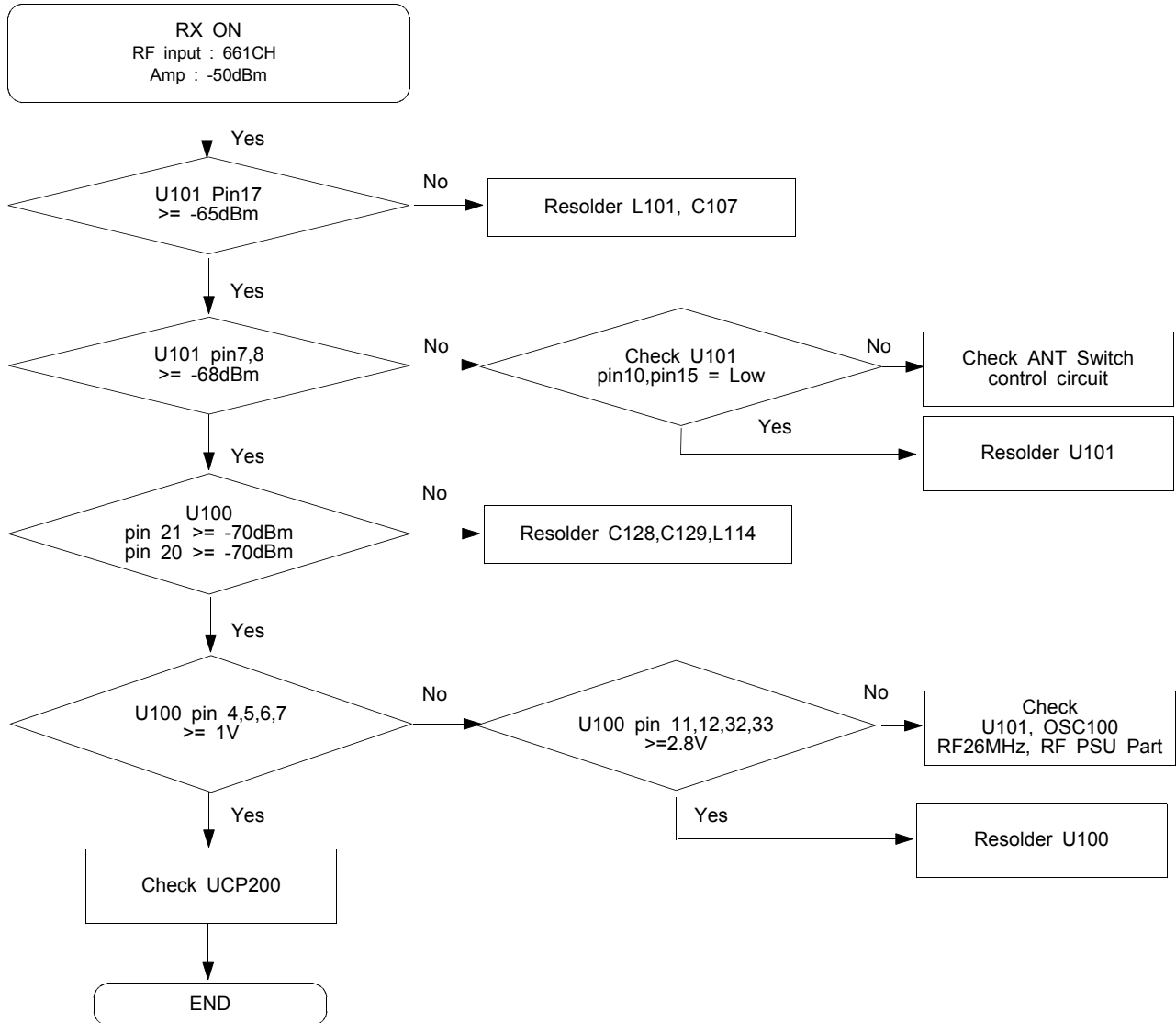
9-15. DCS Receiver



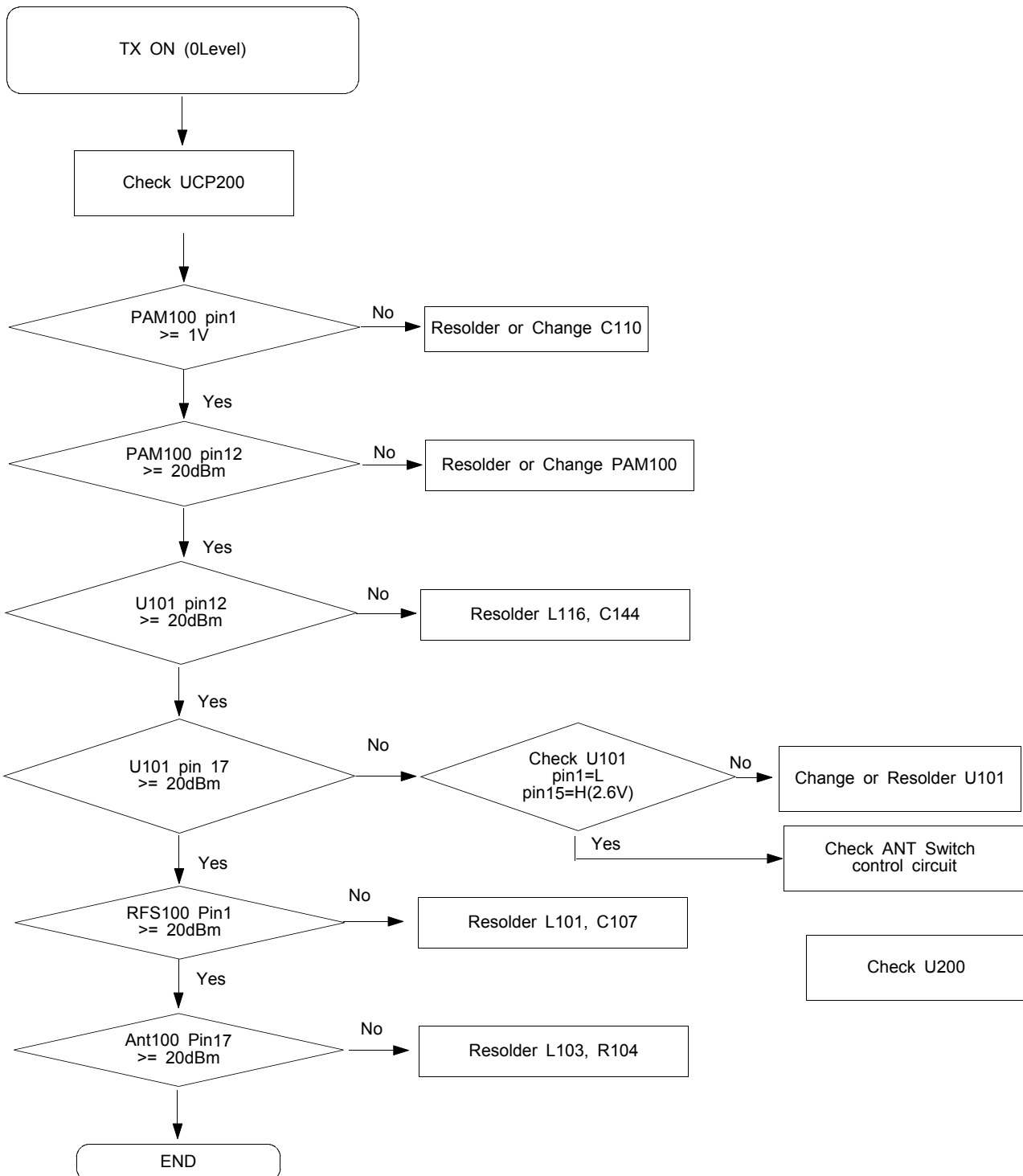
9-16. DCS Transmitter

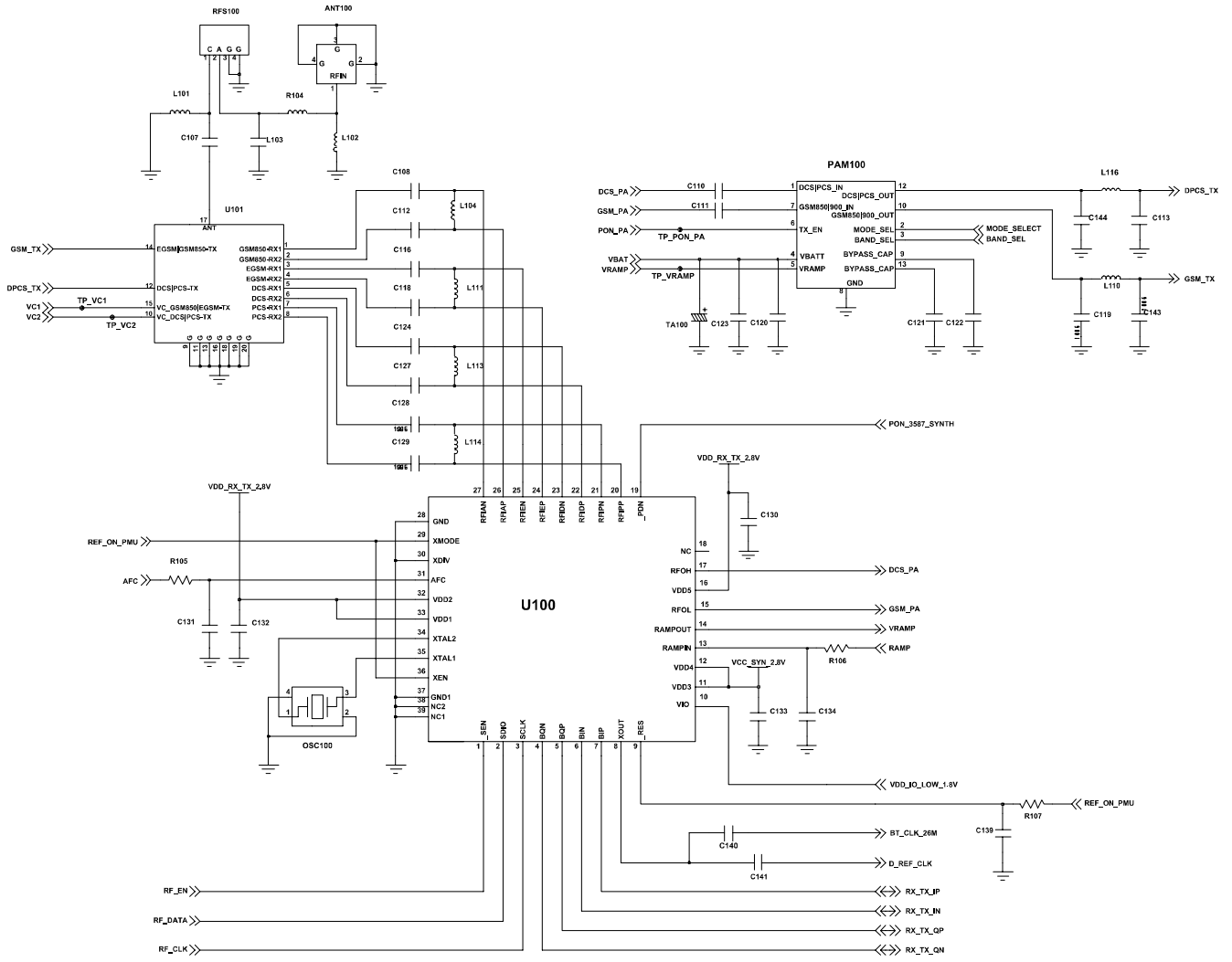


9-17. PCS Receiver



9-18. PCS Transmitter





RF PART

