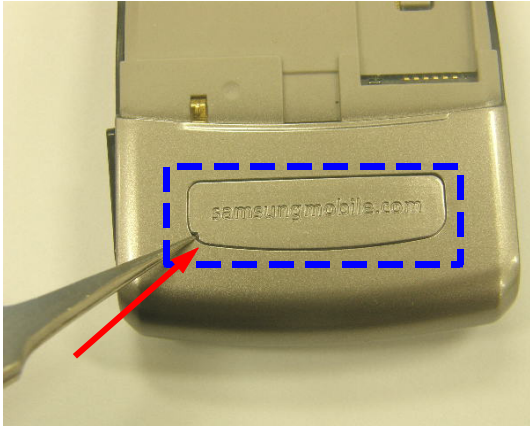


11. Disassembly and Assembly Instructions

11-1. Disassembly

1



1) Separate RF COVER of REAR backside using groove for exclusion.

*** Caution**

1) Be careful not to make scratch and molding damage!

2



1) Remove SET's SCREW 5 POINTS.

*** Caution**

1) Be careful not to make scratch and molding damage!

3

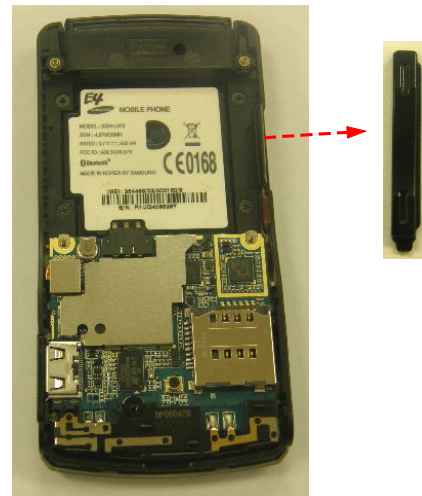


1) Separate REAR ASS'Y in SET.

*** Caution**

1) Be careful not to make scratch and molding damage!

4

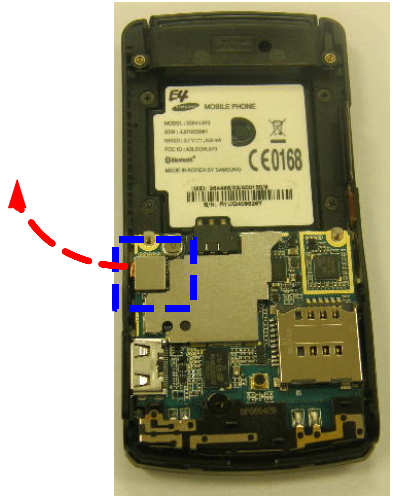


1) Separate VOLUME KEY in SET.

*** Caution**

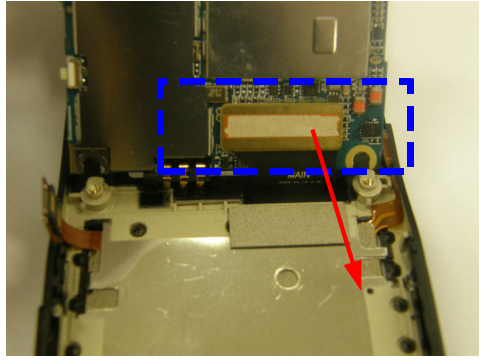
1) Be careful not to make scratch and molding damage!

5



1) Separate KEY PCB CONNECTOR that is to PBA's right side in B'D.
 ※ **Caution**
 1) Be care of scratch and molding damage.

6



1) Lift PBA that is placed to FRONT upward.
 2) Separate PBA and had linked SLIDE F-PCB.
 ※ **Caution**
 1) Be care of scratch and molding damage.

7



1) Remove SCREW CAP in SLIDE LOWER
 ※ **Caution**
 1) Be care of scratch and molding damage.

8



1) Remove SCREW 2 POINTs in SLIDE LOWER.
 ※ **Caution**
 1) Be careful not to make scratch and molding damage!

9

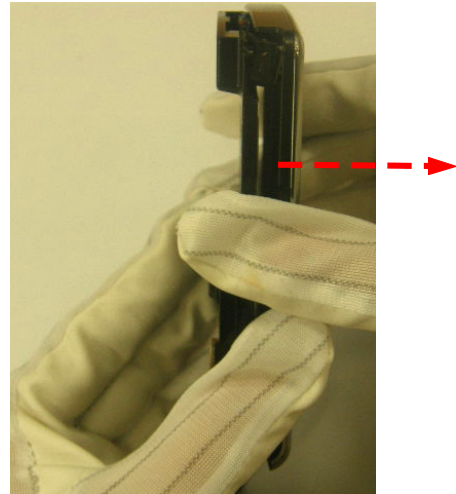


1) Separate SLIDE UPPER from HOOK using a decomposition tool from SLIDE ASS'Y top.

※ **Caution**

1) Be careful not to make scratch and molding damage!

10

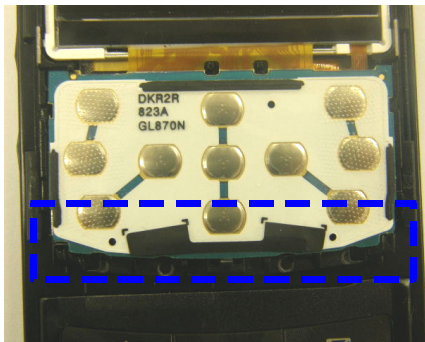


1) Separate SLIDE UPPER from SLIDE LOWER.

※ **Caution**

1) Be careful not to make scratch and molding damage!

11

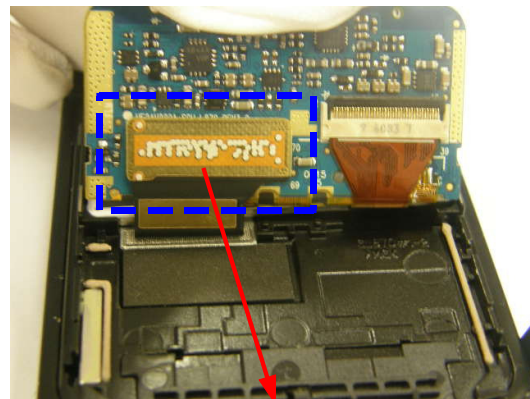


1) Separate SUB PCB from HOOK using a decomposition tool from LOWER.

※ **Caution**

1) Be careful not to make SUB PCB was damaged!

12



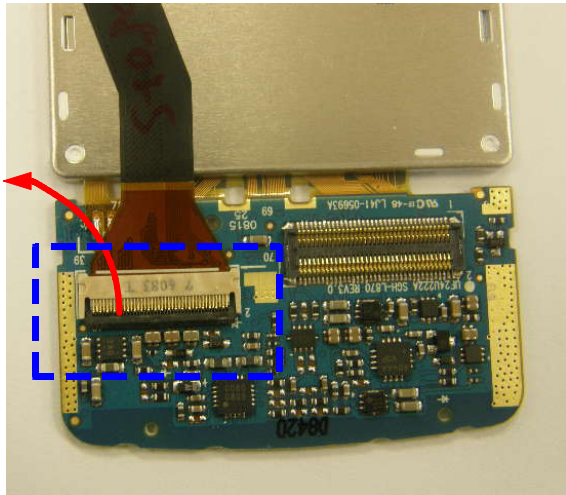
1) Lift SUB PCB that is placed to LOWER.

2) Separate SUB PCB and had linked SLIDE F-PCB.

※ **Caution**

1) Be careful not to make FPCB was damaged!

13



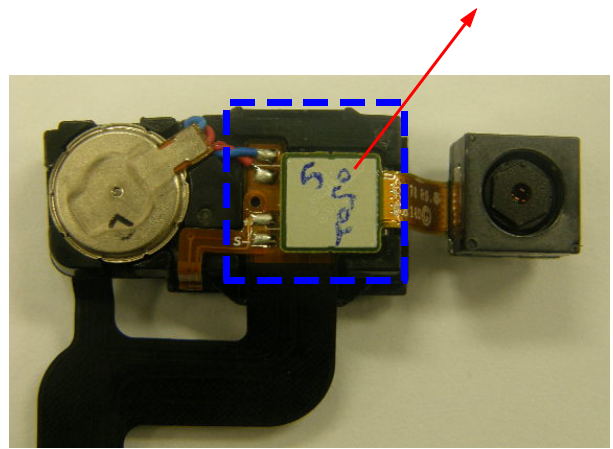
1) Lifts ZIP CONNECTOR to upper and cancels LOCK.

2) Separate SPK ASS'Y F-PCB from LCD.

※ **Caution**

1) Be careful not to make CONNECTOR was damaged!.

14

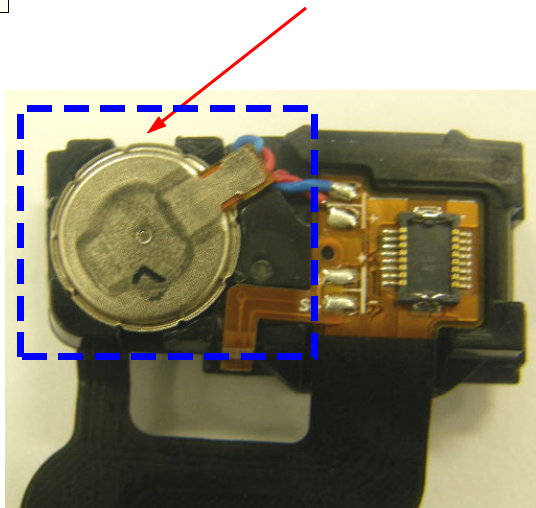


1) Disassemble Mega Camerahad attached to SPK Module.

※ **Caution**

1) Be careful not to make CONNECTOR was damaged!.

15

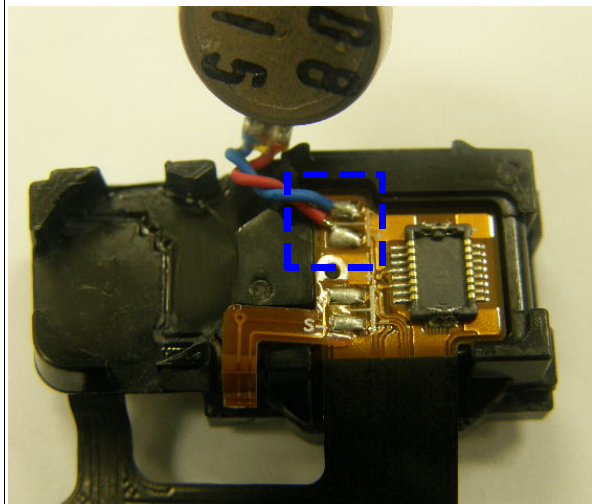


1) Disassemble MOTOR had attached to SPK Module.

※ **Caution**

1) Be careful not to make MOTOR was damaged!.

16

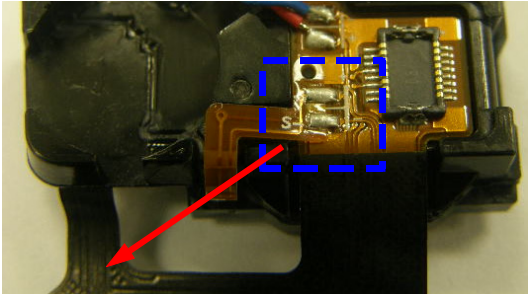


1) Sodering the wire conection, separate the MOTOR.

※ **Caution**

1) Be careful not to make MOTOR was damaged!.

16

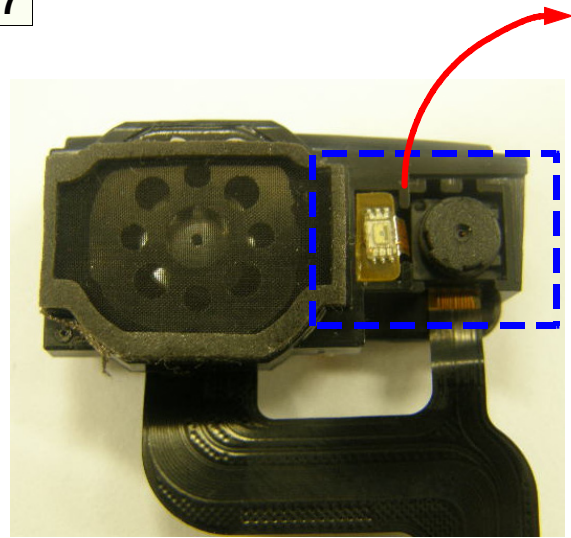


1) Unsoldering the wire connection, separate the SPK Module

※ **Caution**

1) Be careful not to be damaged on FPCB.

17

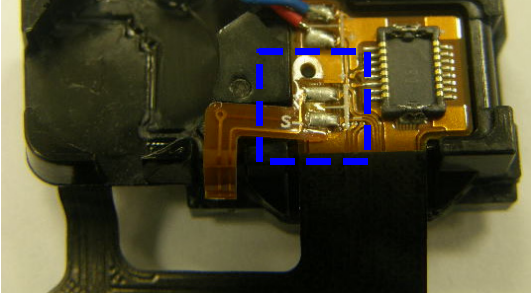
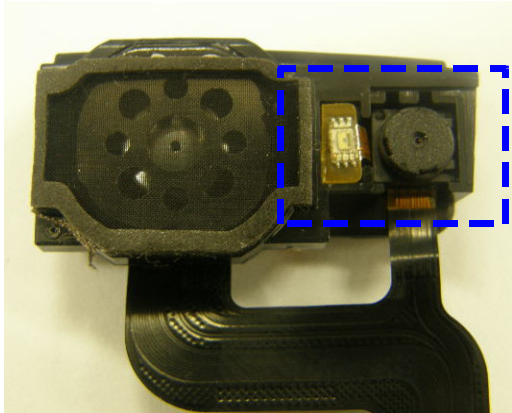
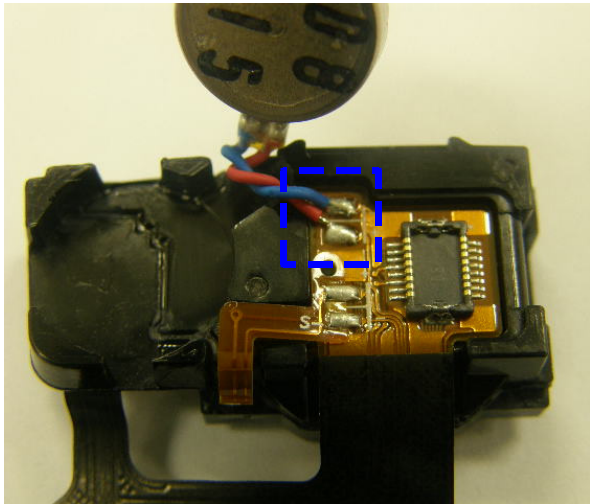
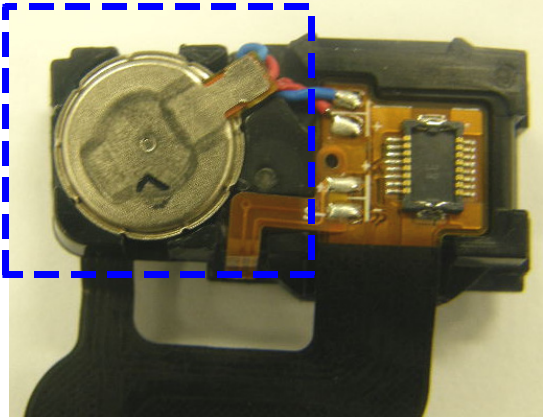


1) Disassemble CIF Camera, ILLUMINOMETER had attached to SPK Module.

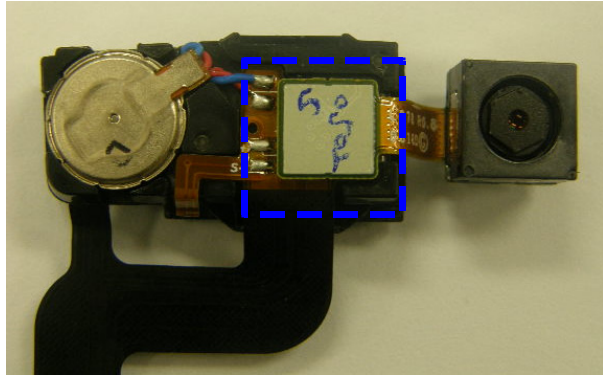
※ **Caution**

1) Be careful not to be damaged on FPCB.

11-2. Assembly

<p style="text-align: center;">1</p> 	<p style="text-align: center;">2</p> 
<p>1) Sodering the F-PCB, attach the SPK Module ※ Caution 1) Be careful not to make short +,-.</p>	<p>1) Assemble CIF Camera, ILLUMINOMETER had attached to SPK Module. ※ Caution 1) Confirm whether they were attached exactly!</p>
<p style="text-align: center;">3</p> 	<p style="text-align: center;">4</p> 
<p>1) Sodering the wire conection, link the MOTOR. ※ Caution 1) Be careful not to make short +,-.</p>	<p>1) Assemble MOTOR had attached to SPK Module. ※ Caution 1) Be careful not to make MOTOR was damaged!.</p>

5

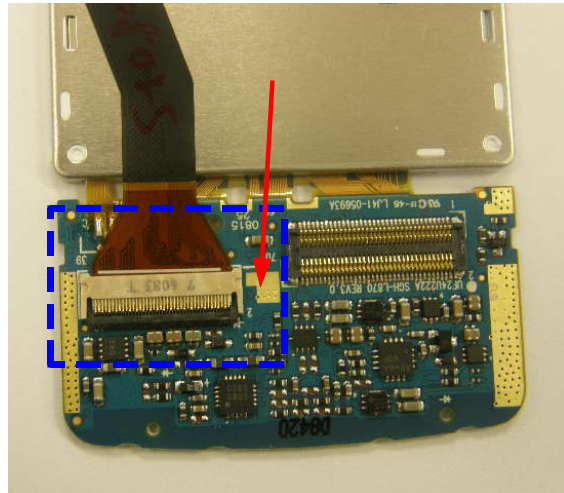


1) Assemble Mega Camera had attached to SPK Module.

※ Caution

1) Confirm whether CONNECTOR was linked exactly!

6



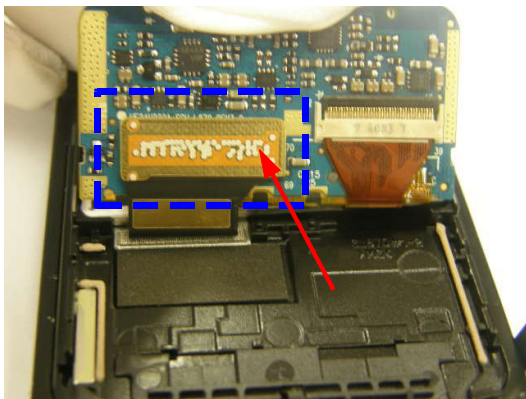
1) Lifts ZIP CONNECTOR to upper and cancels LOCK.

2) Assemble SPK ASS'Y F-PCB to LCD.

※ Caution

1) Confirm whether FPCB was linked exactly!

7



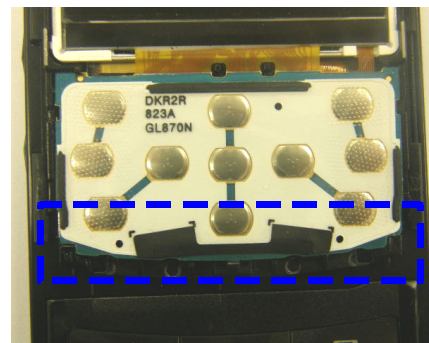
1) Lift SUB PCB that is placed to LOWER.

2) Assemble SUB PCB and had linked SLIDE F-PCB.

※ Caution

1) Confirm whether SLIDE FPCB was linked exactly!

8



1) Assemble SUB PCB in LOWER as pressing it.

※ Caution

1) Be careful not to make molding damage!

9



- 1) Assemble SLIDE UPPER to SLIDE LOWER.
 ※ **Caution**
 1) Be careful not to make scratch and molding damage!

10



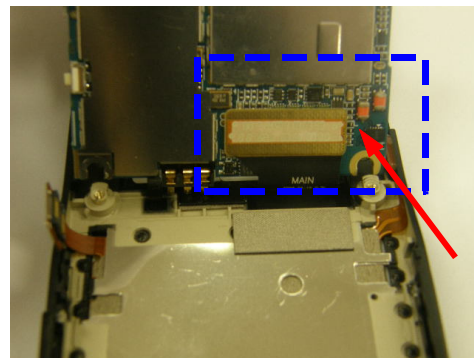
- 1) Assemble SCREW 2 POINTs to LOWER.
 ※ **Caution**
 1) Be careful not to make scratch and molding damage!
 2) Confirm TORQUE (1.3~ 1.5 Kgf.Cm)

11



- 1) Attach SCREW Cap on SLIDE LOWER
 ※ **Caution**
 1) Be careful not to make scratch and molding damage!

12



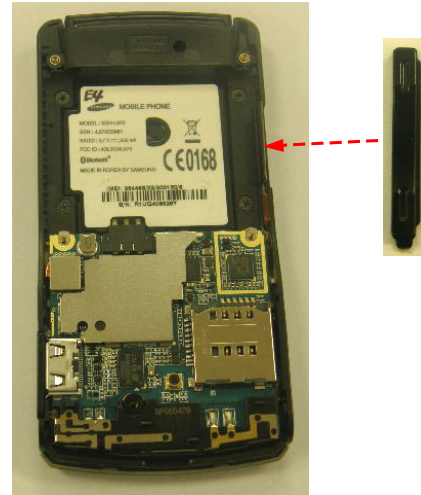
- 1) Assemble SLIDE F-PCB CONNECTOR to PBA.
 ※ **Caution**
 1) Confirm whether SLIDE FPCB was linked exactly!

13



- 1) Insert SIDE KEY to the FRONT.
 ※ **Caution**
 1) Confirm whether 3*4 KEY CONNECTOR was linked exactly!

14



- 1) Place VOLUME KEY on SET side.
 ※ **Caution**
 1) Be careful not to make scratch and molding damage!

15

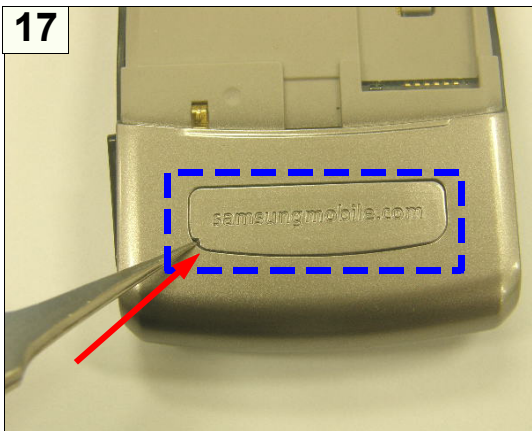


- 1) Combine REAR COVER to FRONT ASS'Y.
 ※ **Caution**
 1) Be careful not to make scratch and molding damage!

16



- 1) Assemble SCREW 5 POINTs to SET.
 ※ **Caution**
 1) Be careful not to make scratch and molding damage!
 2) Confirm TORQE (1.0~ 1.2 Kgf.Cm)



1) Attach REAR COVER to the bottom RF COVER.

※ Caution

1) Be careful not to make scratch and molding damage!.