
4. Array course control



Test Jig (GH80-03307A)



**Test Cable
(0.4M:GH39-00930A, 1.5M:GH39-00928A)**



RF Test Cable (GH39-00985A)

Software Downloading

4-1. Downloading Binary Files

- 1) One binary files for downloading L870
 - onenand.img

4-2. Pre-requisite for Downloading

- Downloader Program (LeTools v1.39)

- SGH-L870 Mobile Phone

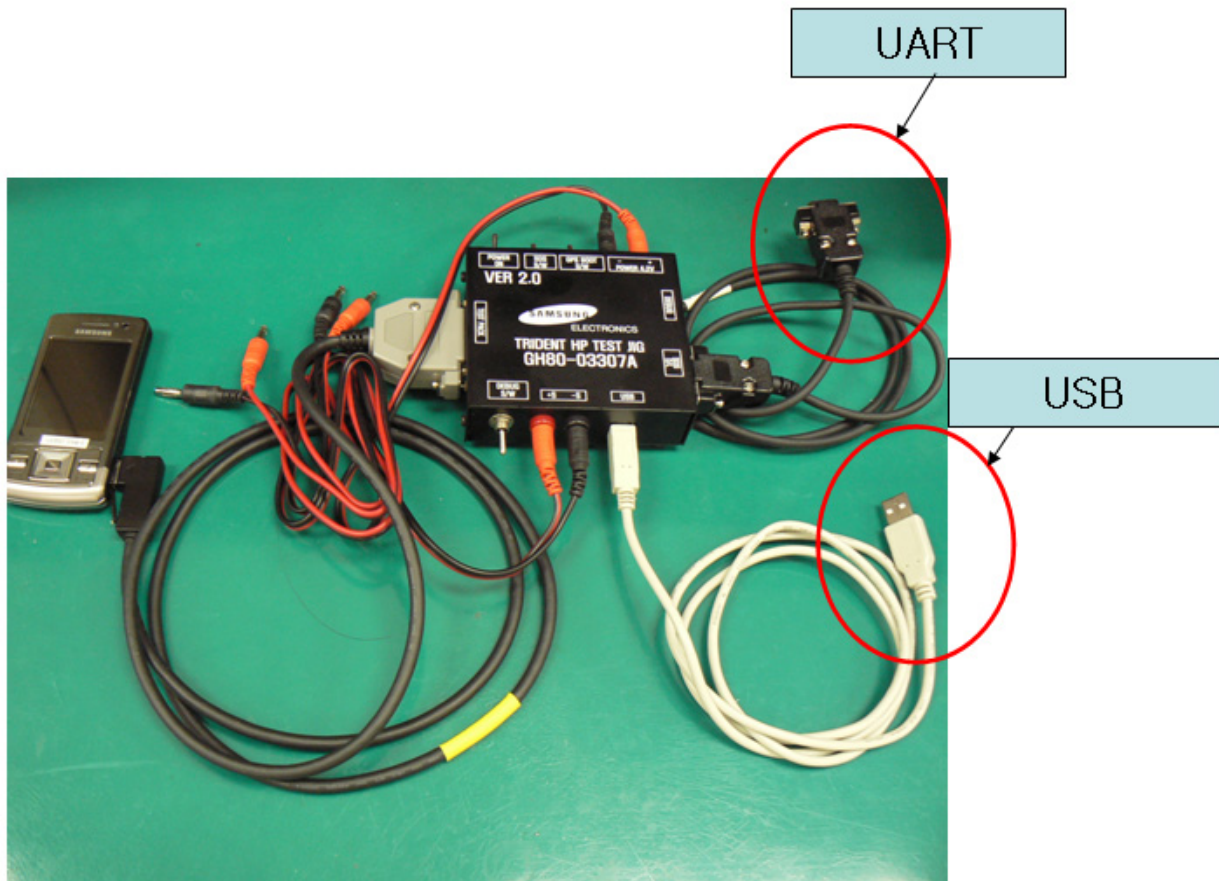
- Data Cable

- Binary file

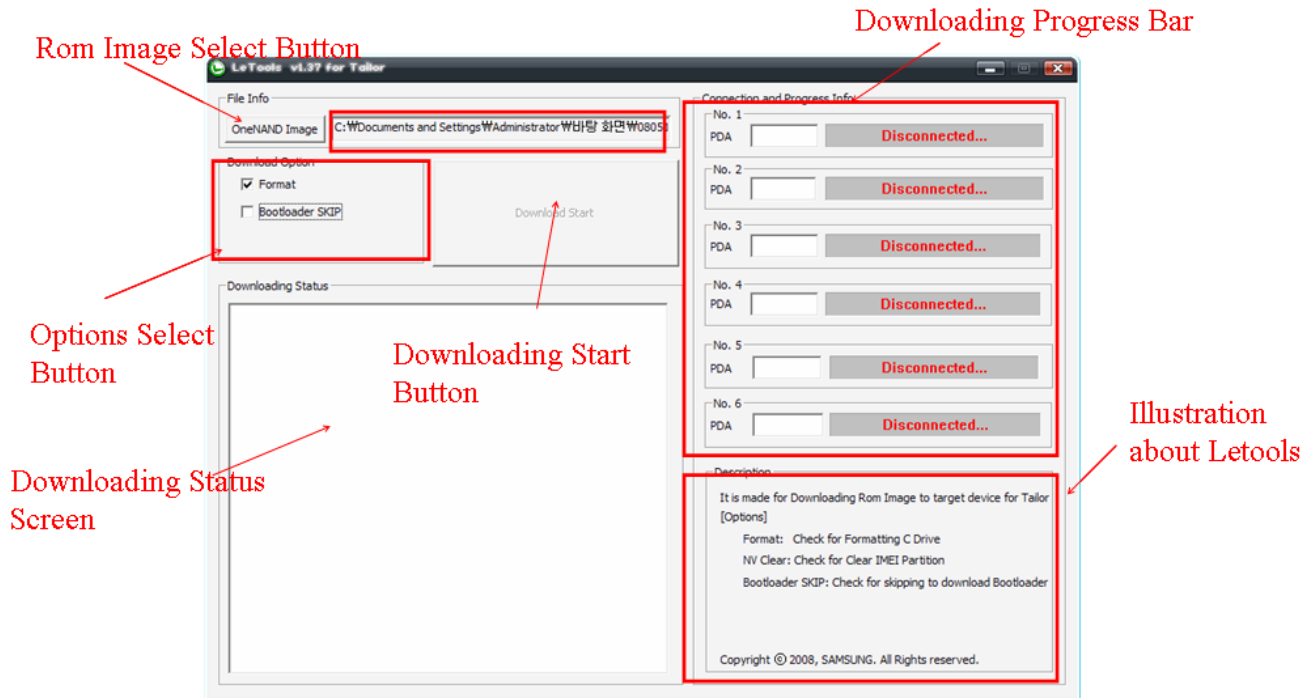
4-3. S/W Downloader Program

4-3-1. Connection

- Connect SGH-L870 and JIG BOX
- Connect USB Port and UART port
- Reference the following feature

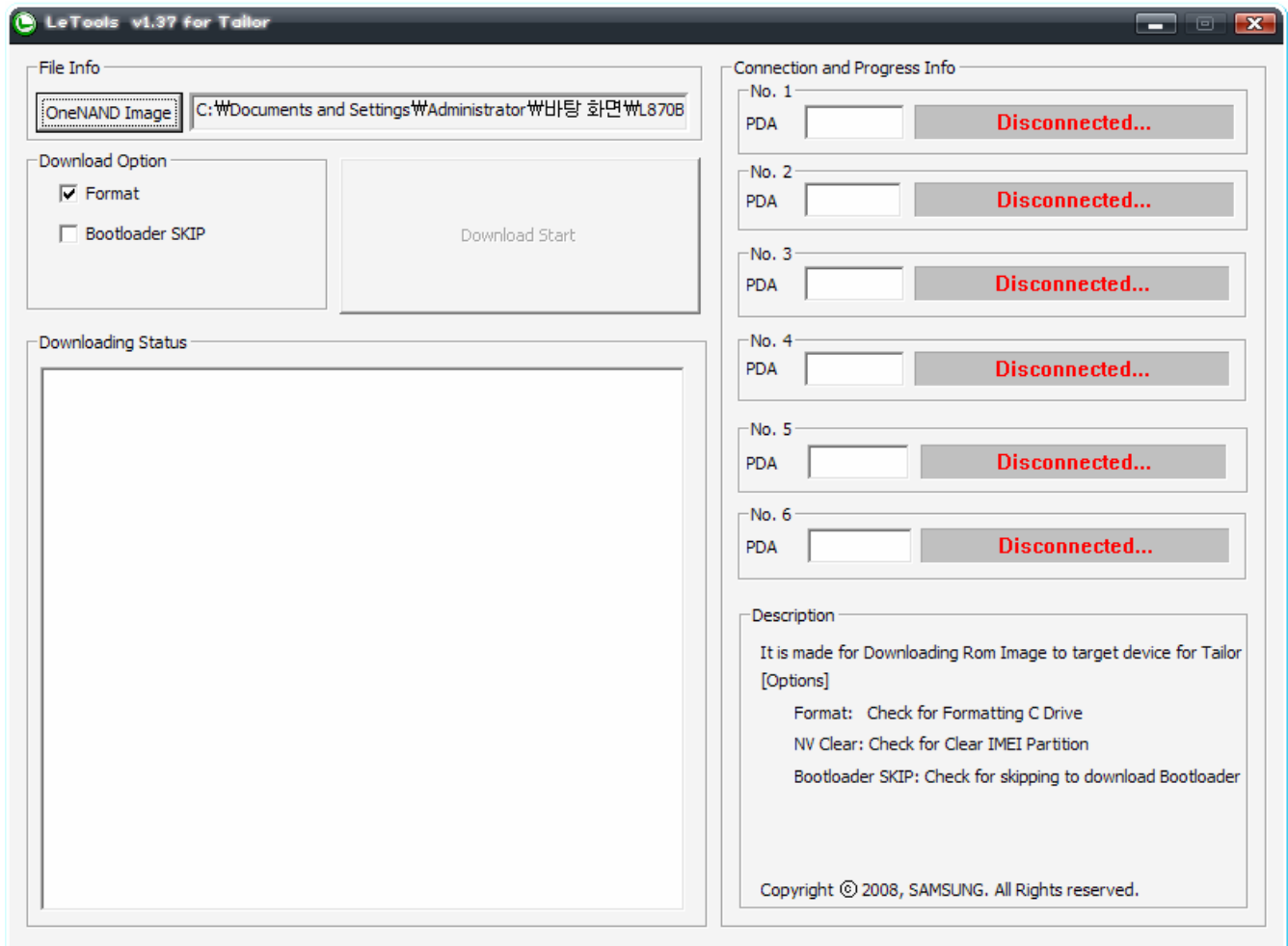


4-3-2. Download PGM

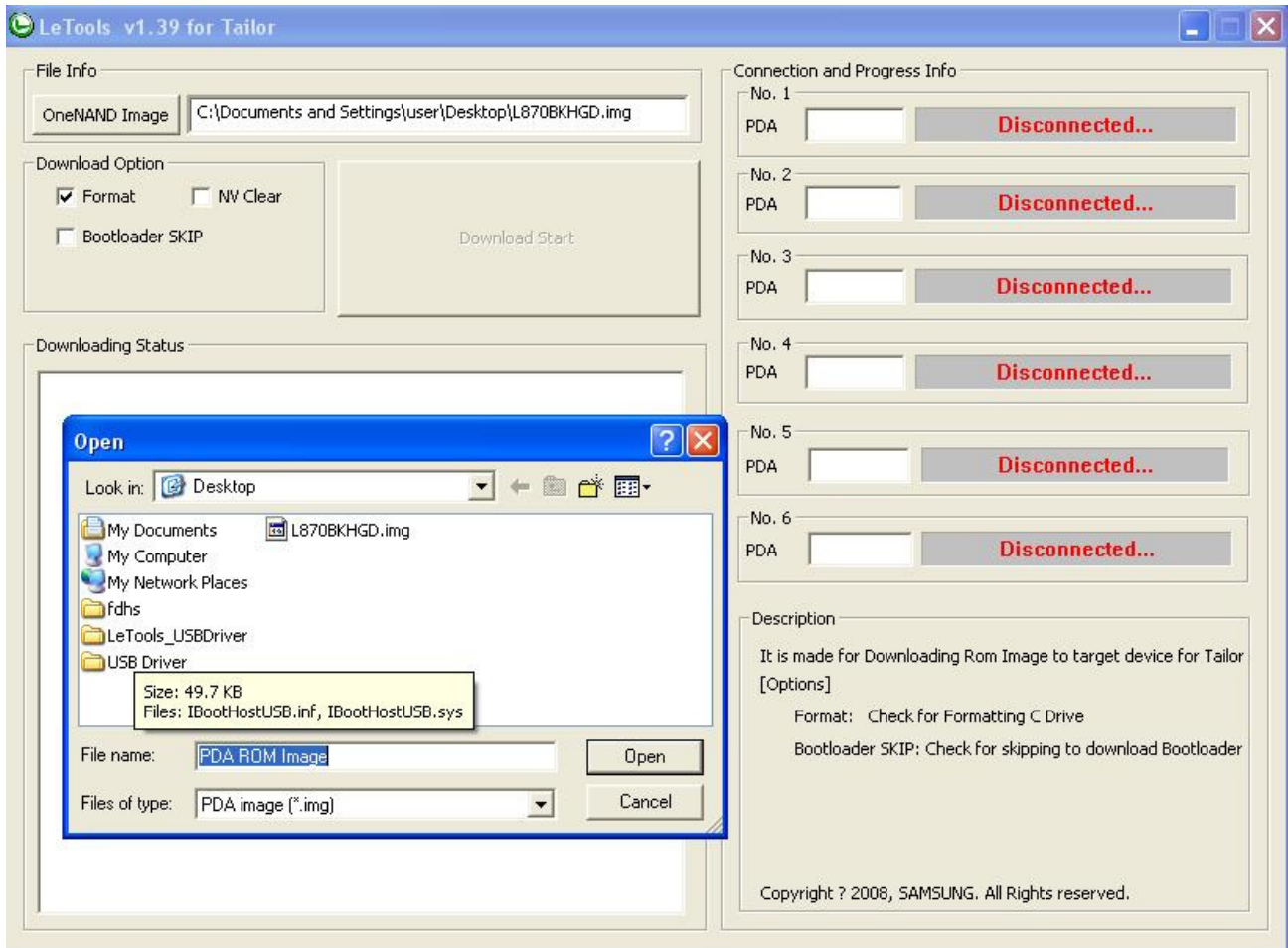


4-3-3. Usage of Downloader Tool(LeTools v1.39).

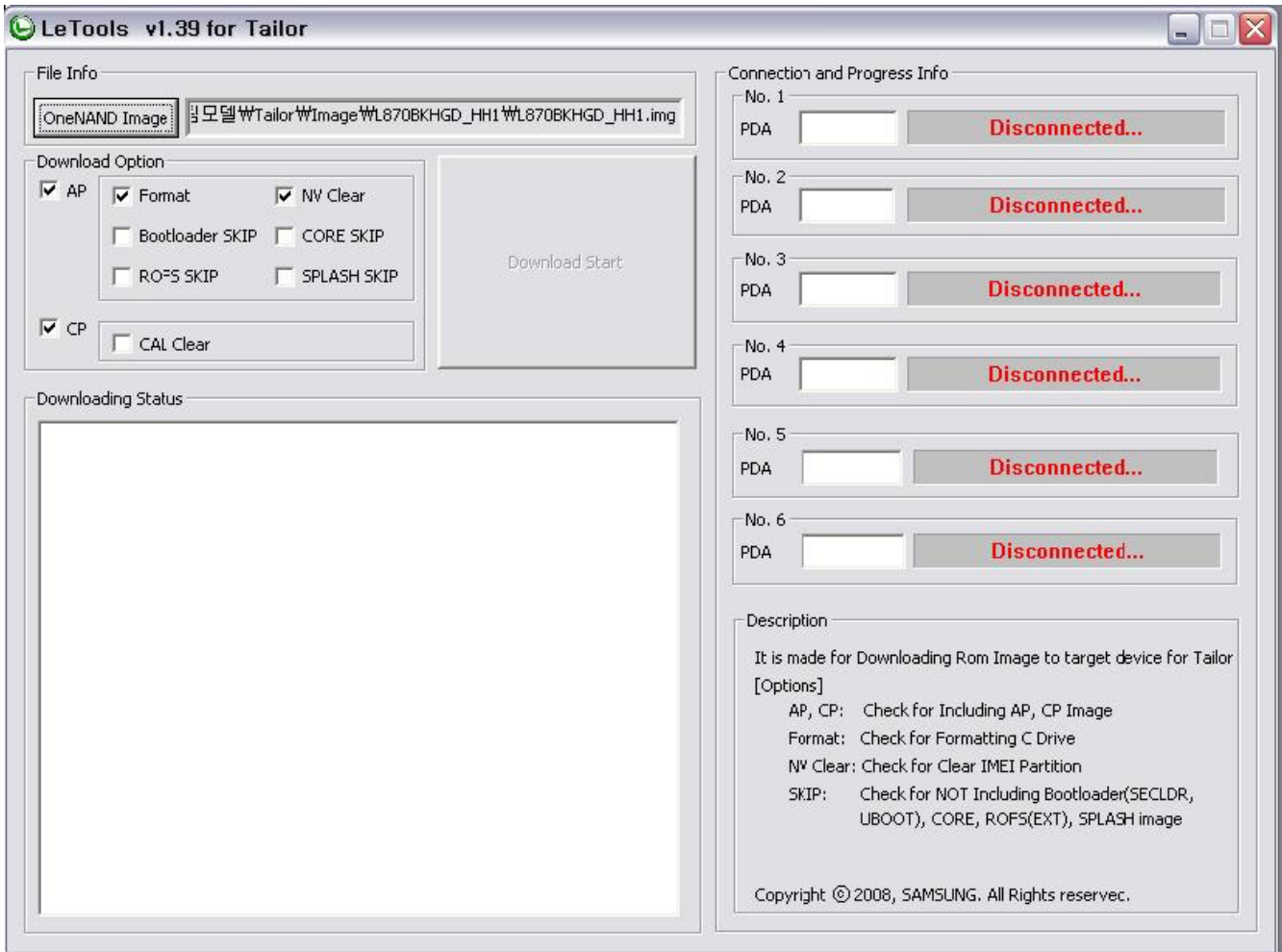
① Run the LeTools



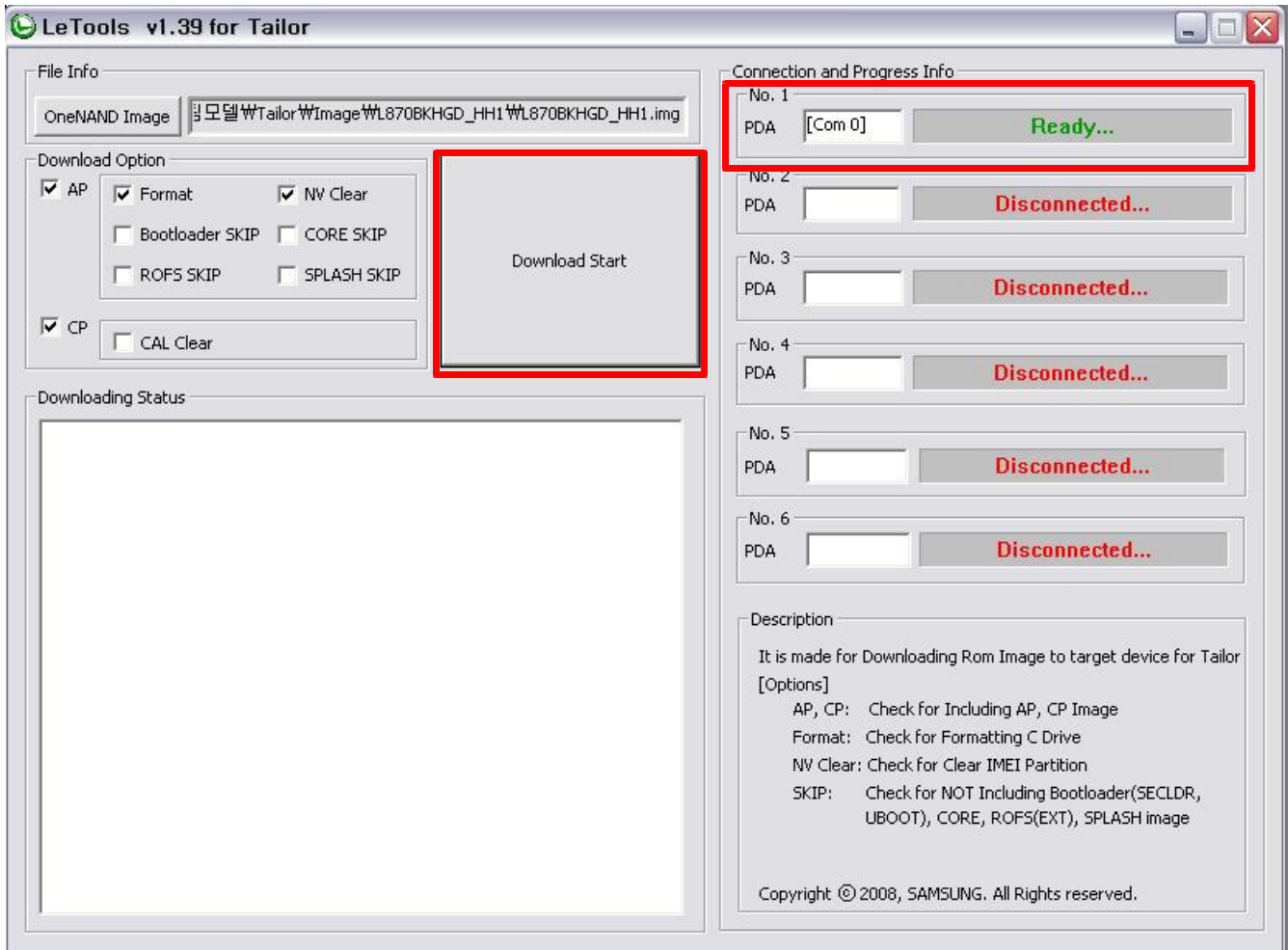
②. Select Rom image for downloading



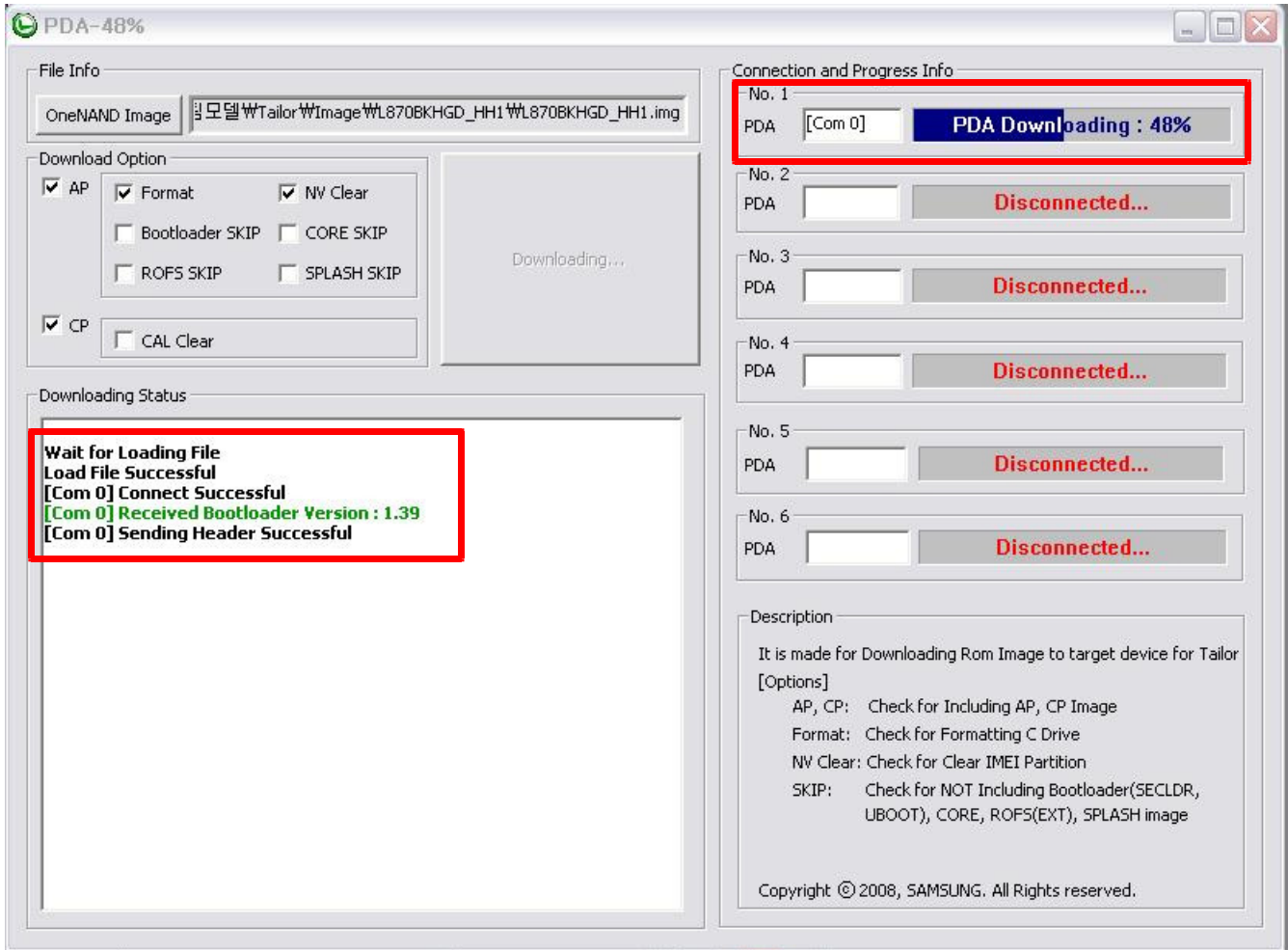
③. Check the options(default, check only Format option)



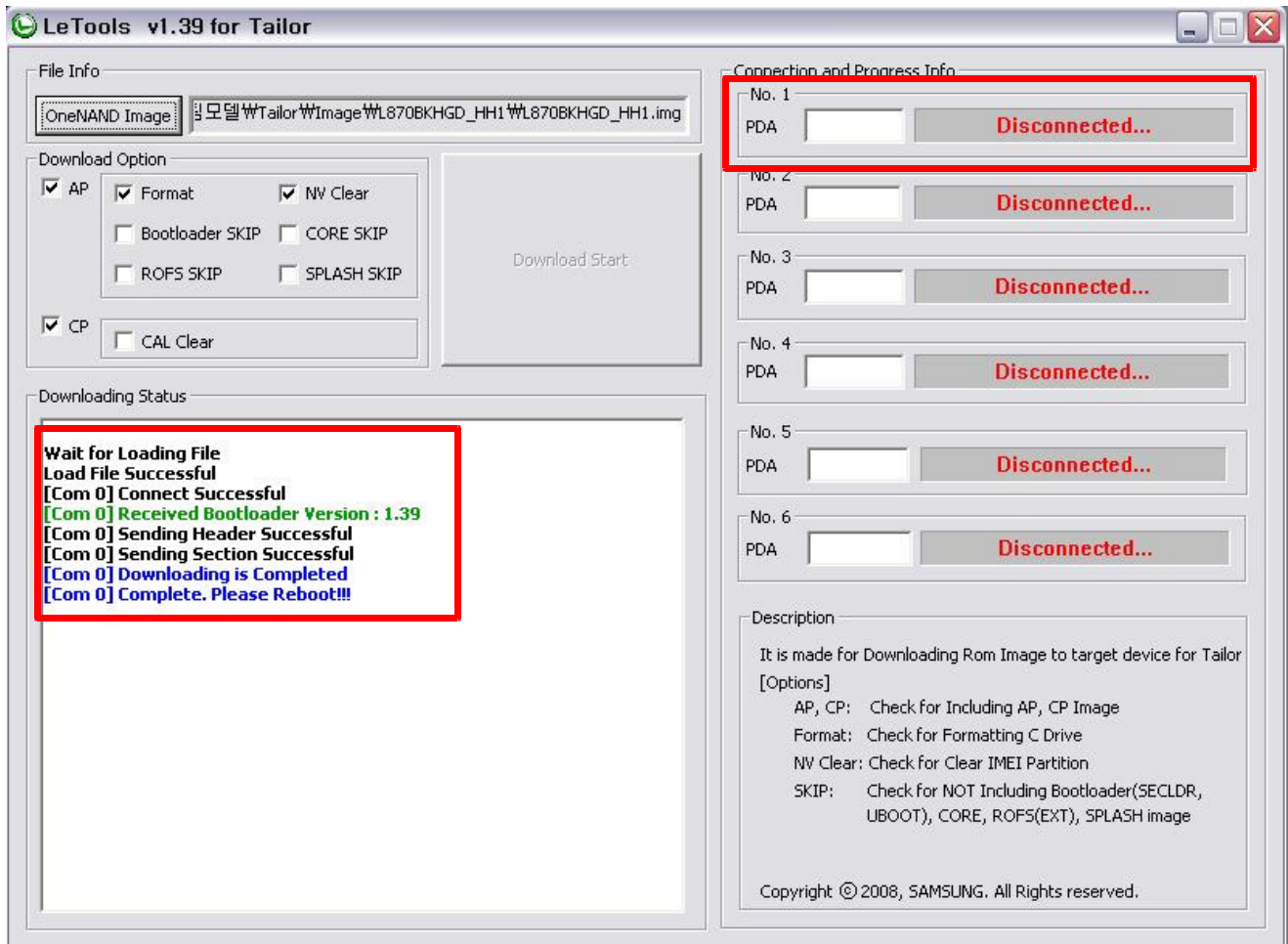
④. Power on the phone with pressing the No1 + No4 key



⑤. Start Downloading



⑥.Completion

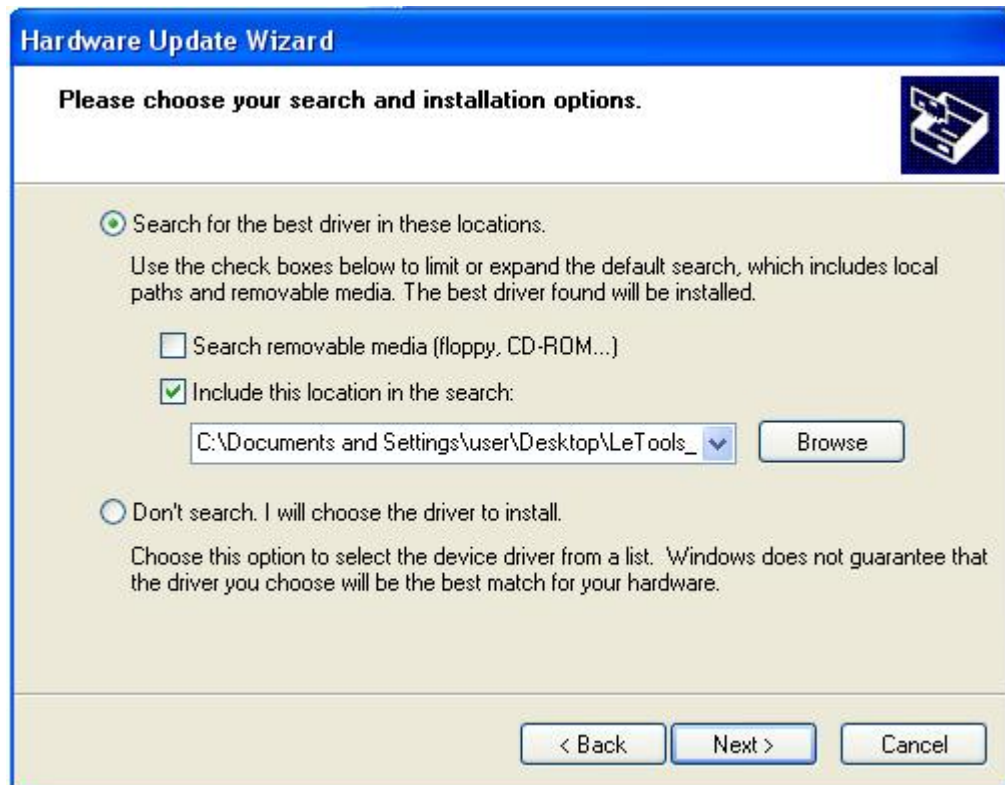


4-3-4. Installation of USB Driver

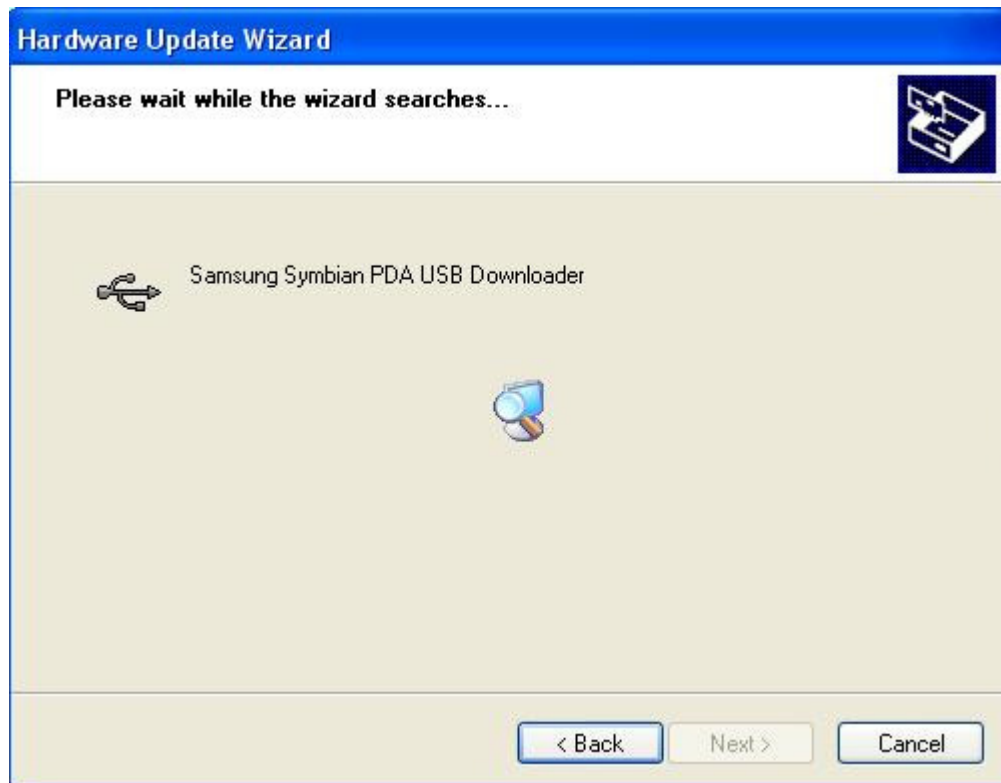
- ① Select the installation in list or specific folder



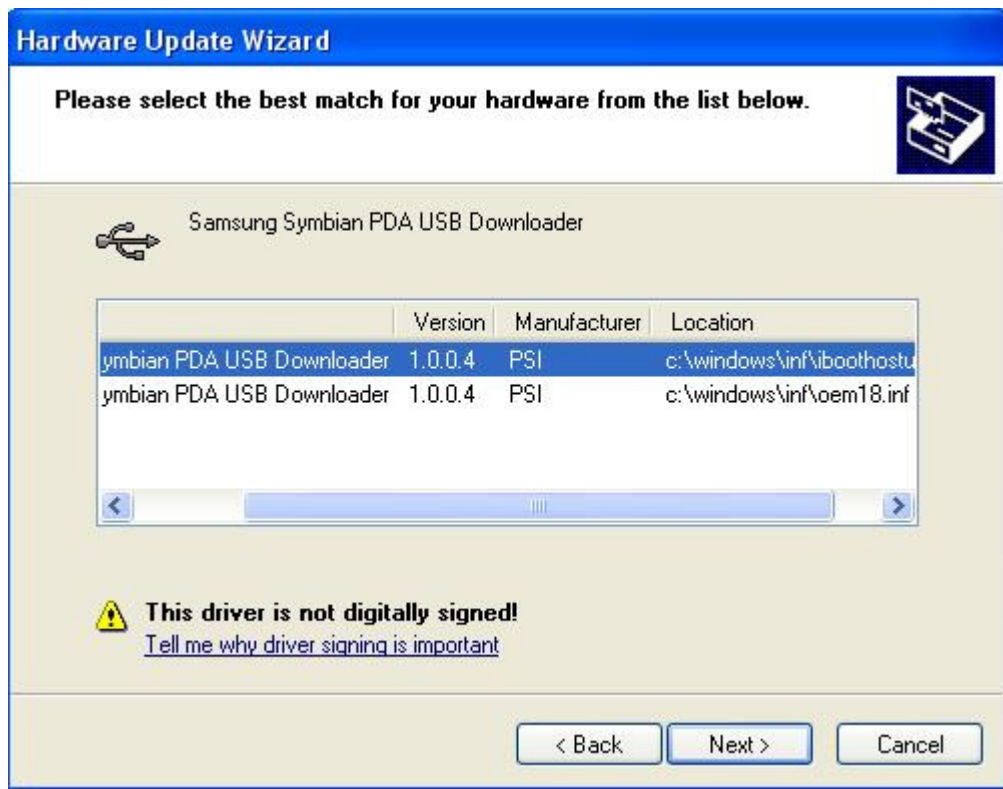
- ② **Select to find proper driver in this folder. Selecting folder included USB driver**



③ **Searching and installation.**



- ④ If selection screen appears, Select *iboothostusb.inf* files



4-3-5 keep this rules

1. If you connect USB cable through USB hub, sometimes downloading is failed.
⇒ [Try to connect USB cable to PC directly](#)
2. Please **keep the sequence** for USAGE
3. Never **disconnect** during the downloading