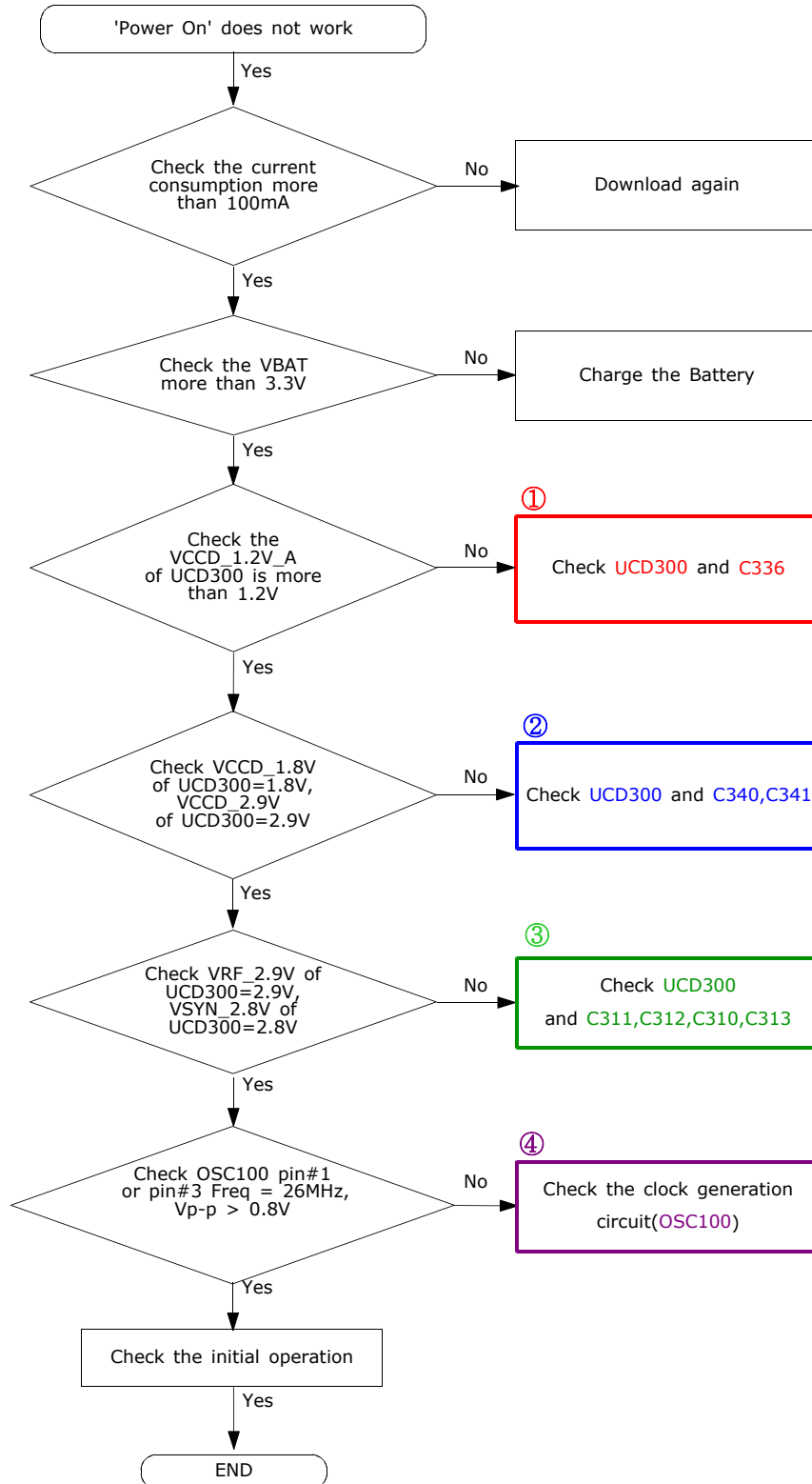
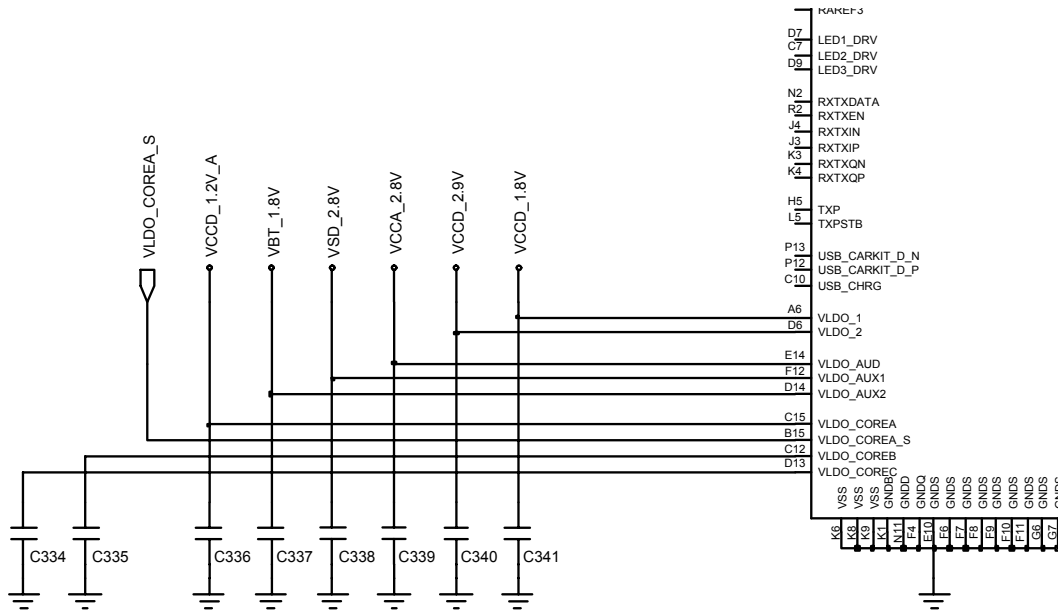
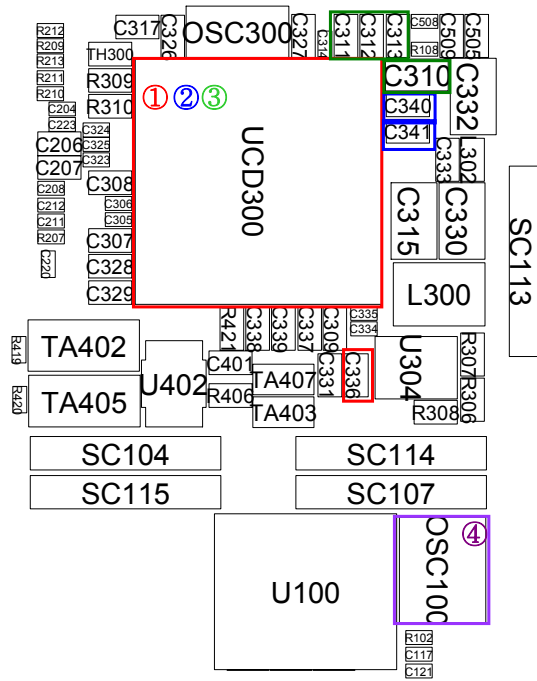


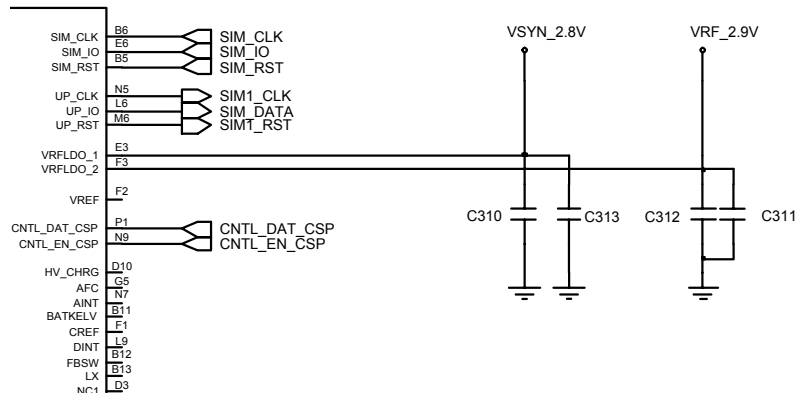
10. Flow Chart of Troubleshooting

10-1.Baseband

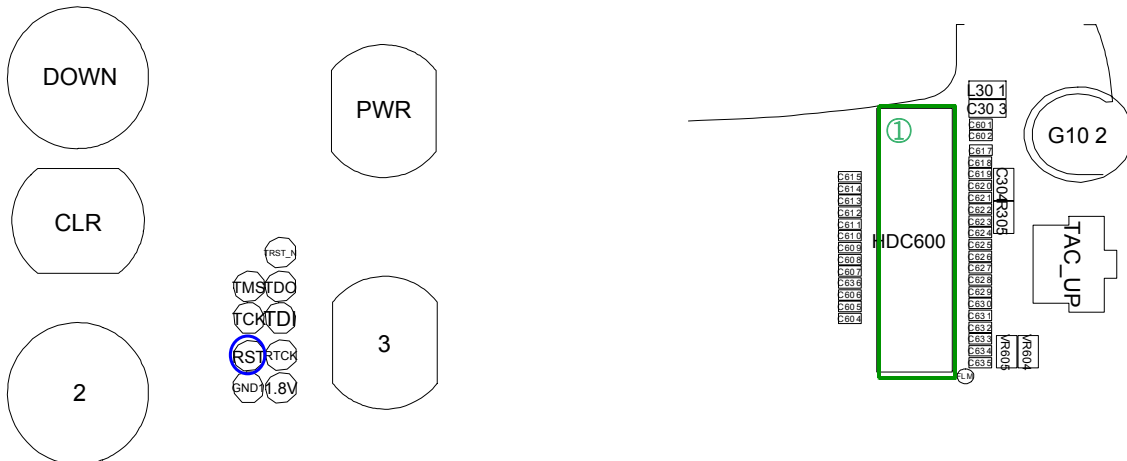
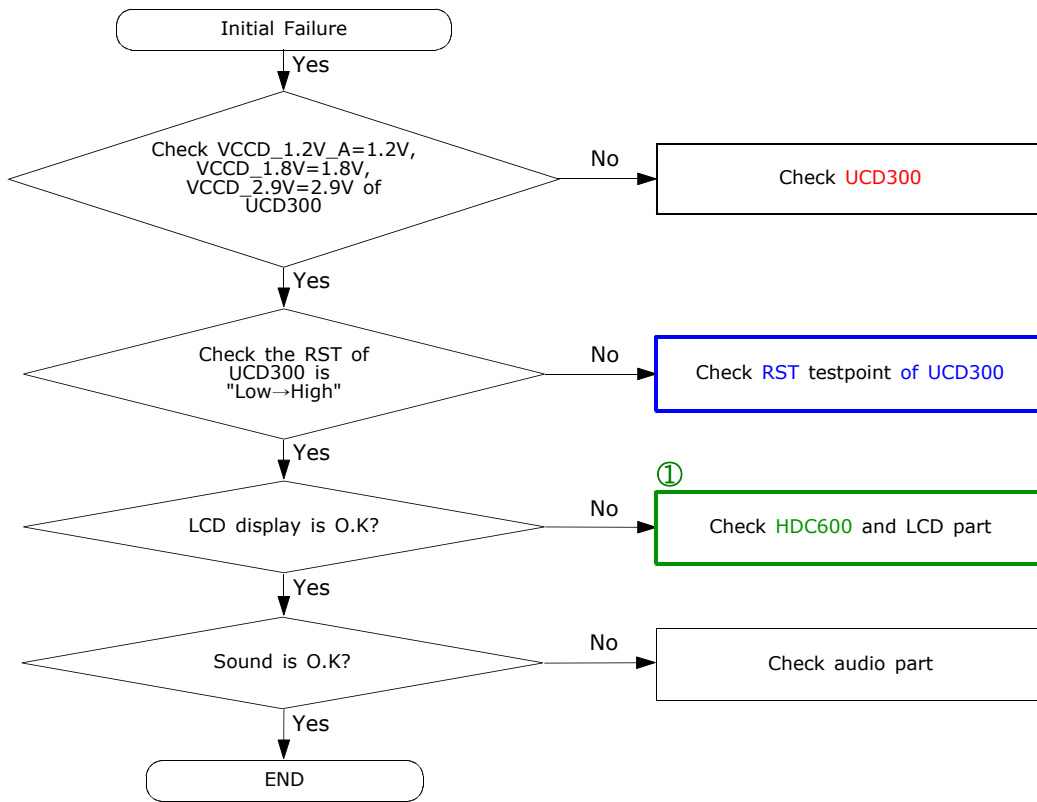
10-1-1. Power ON

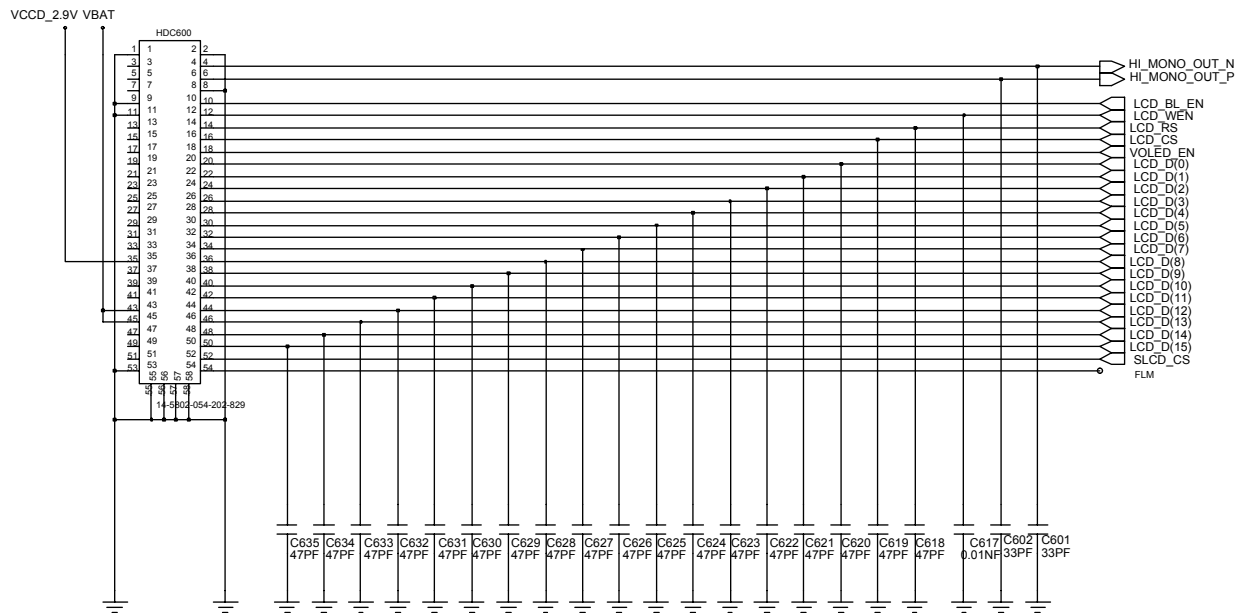
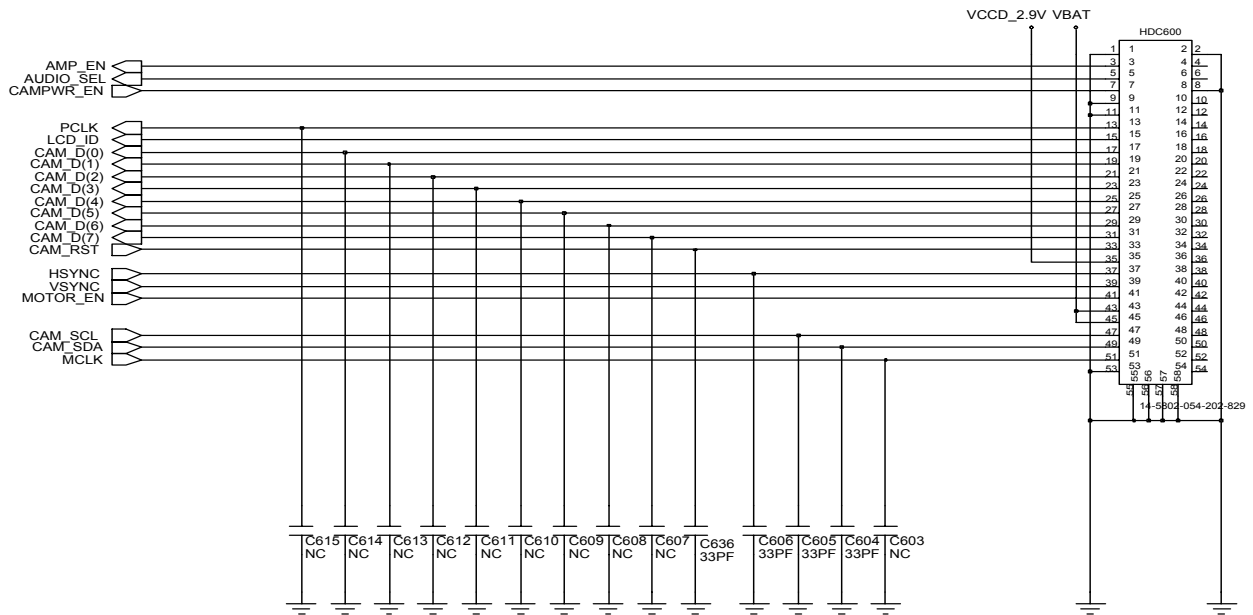




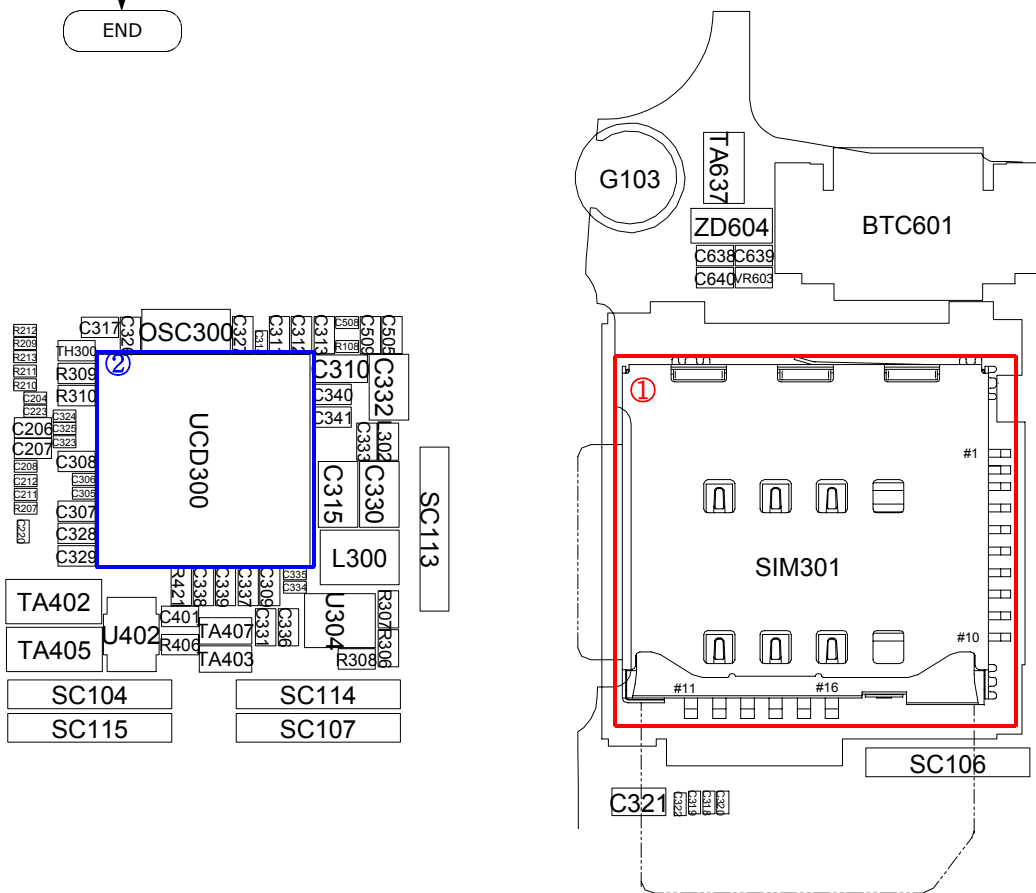
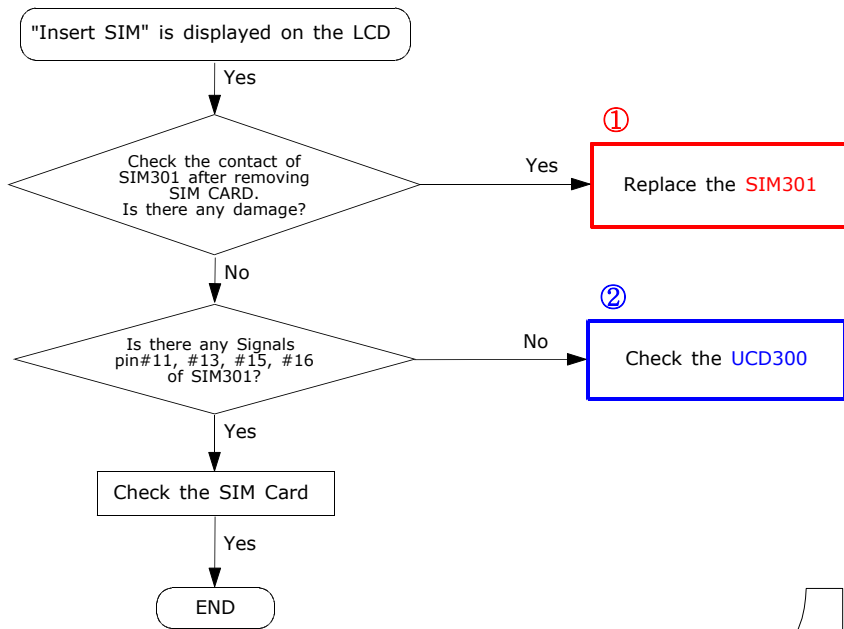


10-1-2. Initial

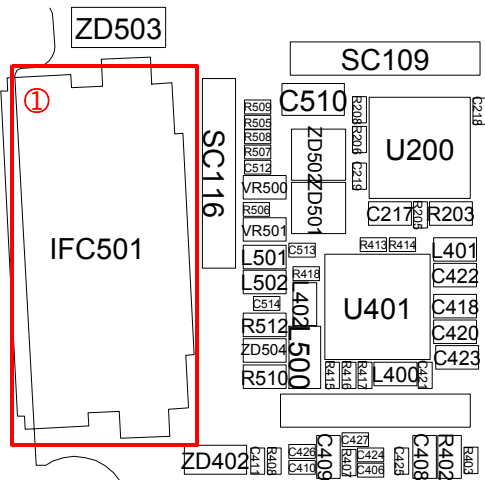
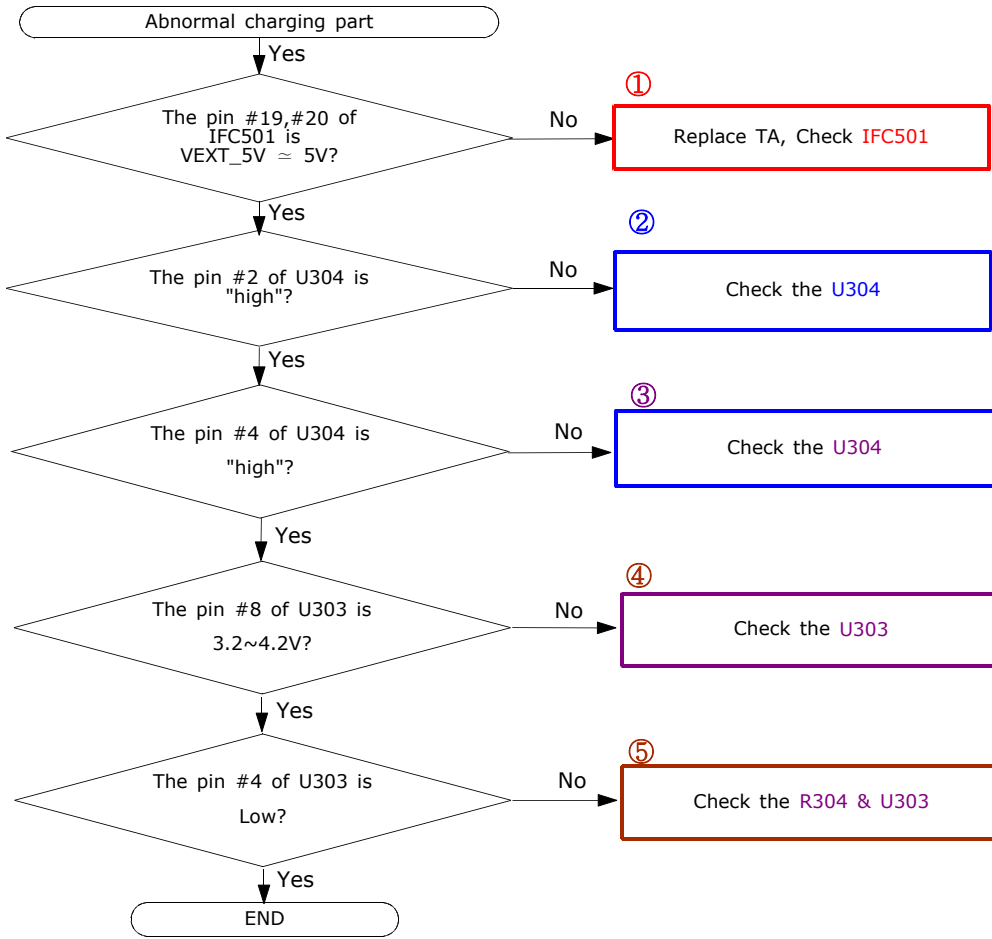




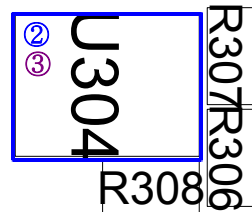
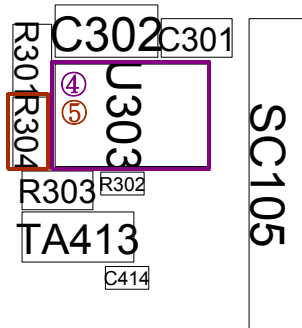
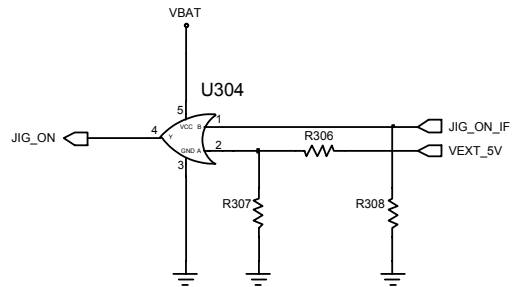
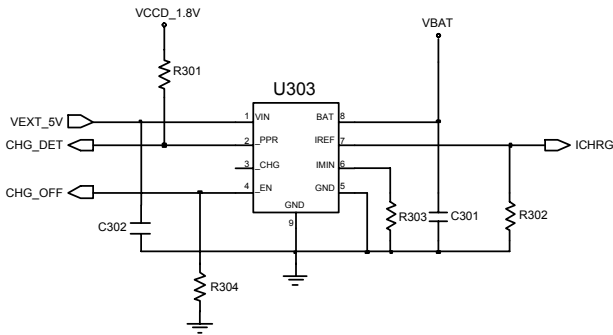
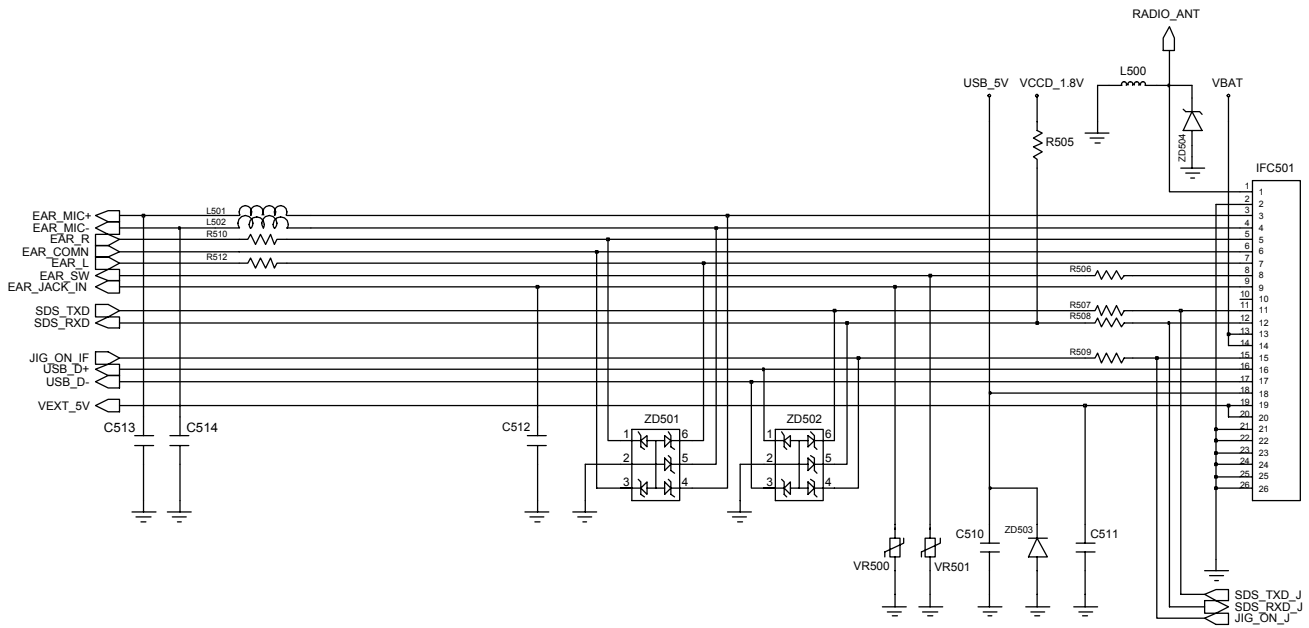
10-1-3. Sim Part



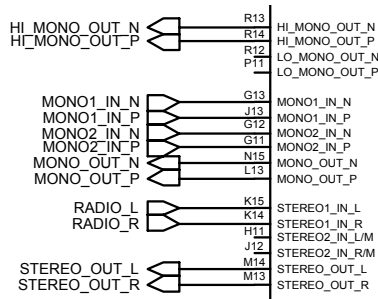
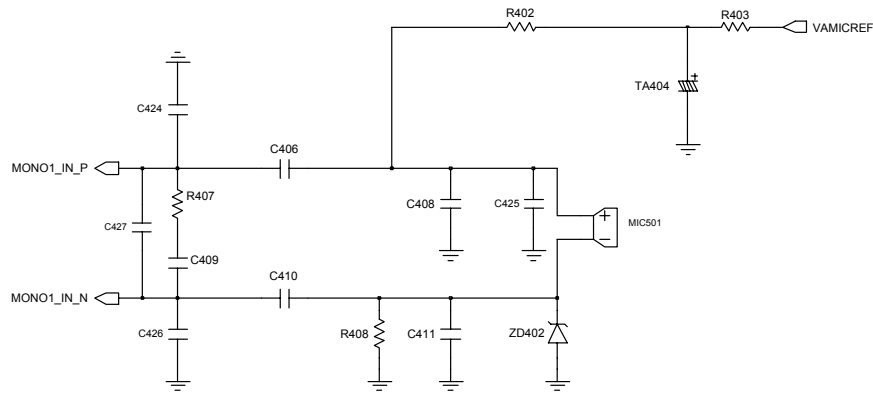
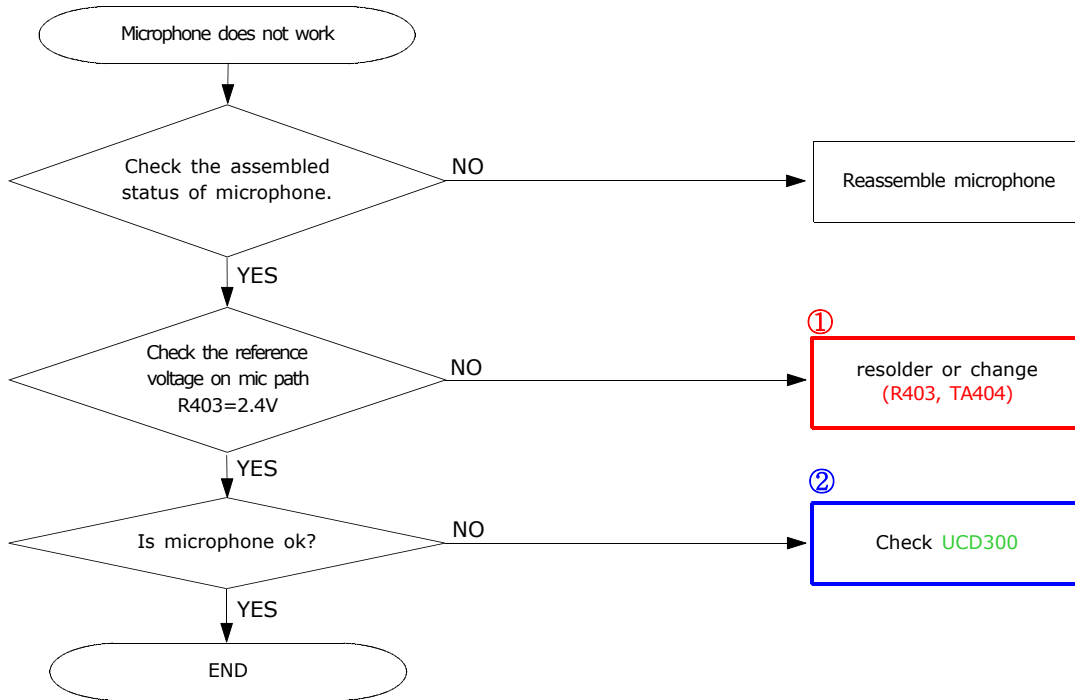
10-1-4. Charging Part



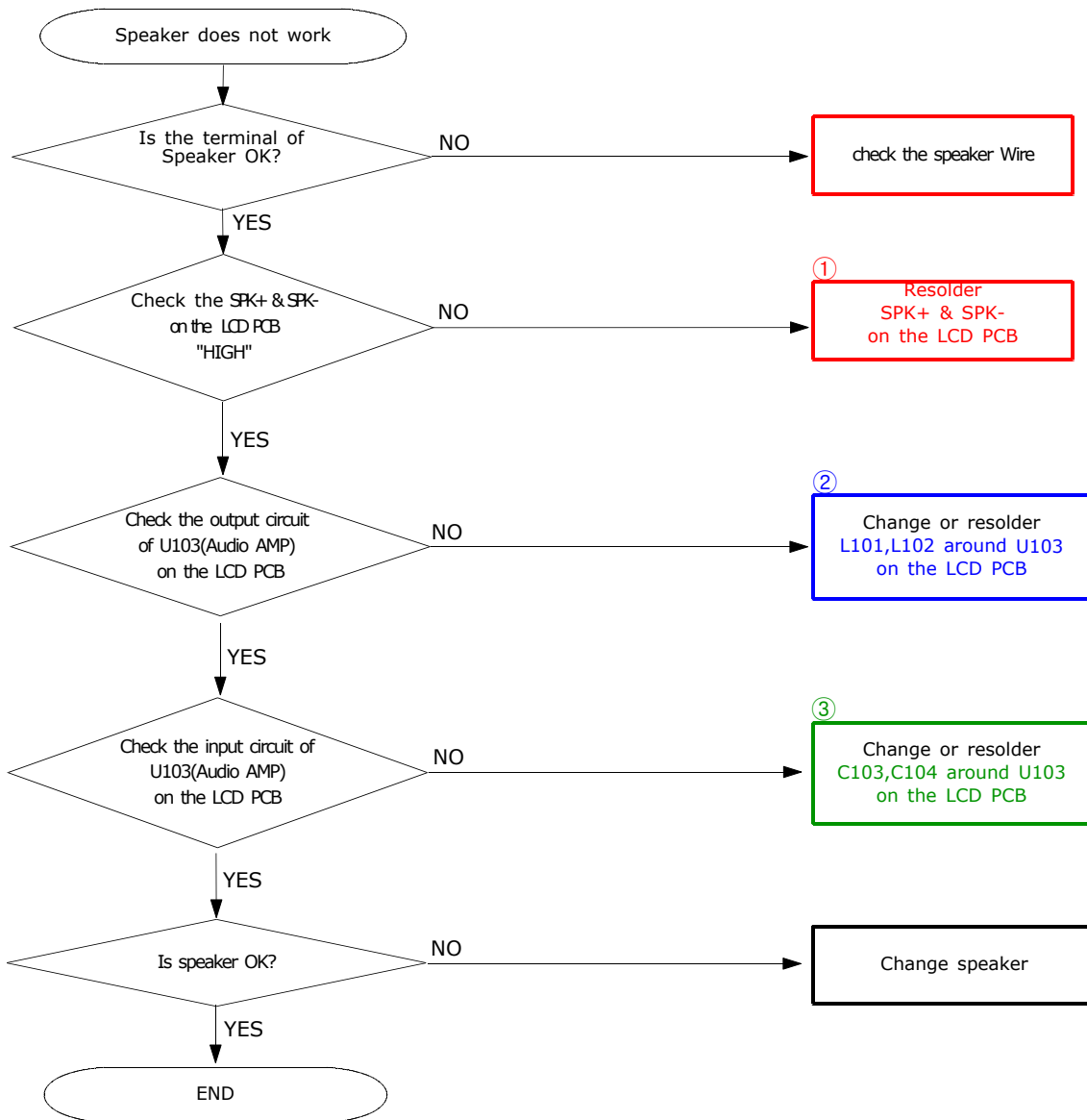
Flow Chart of Troubleshooting and Circuit Diagrams

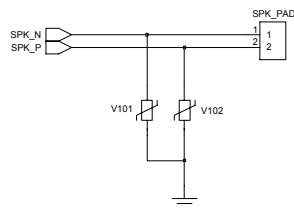
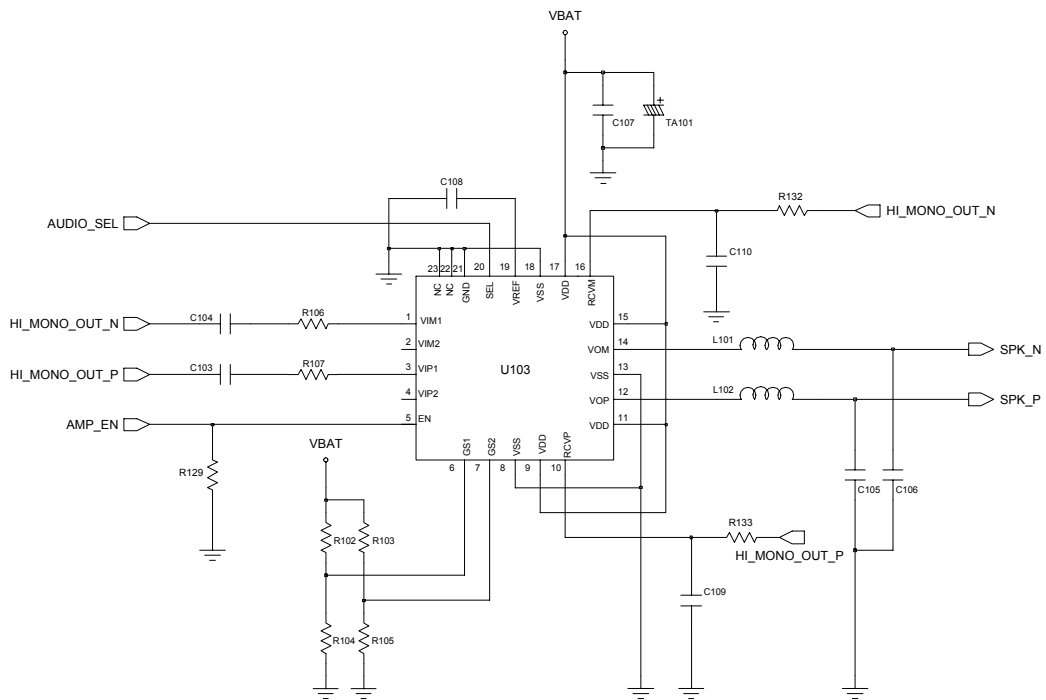
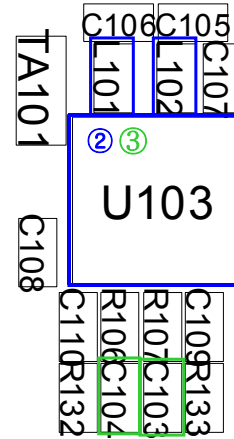
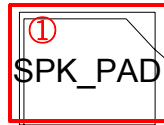


10-1-5. Microphone Part

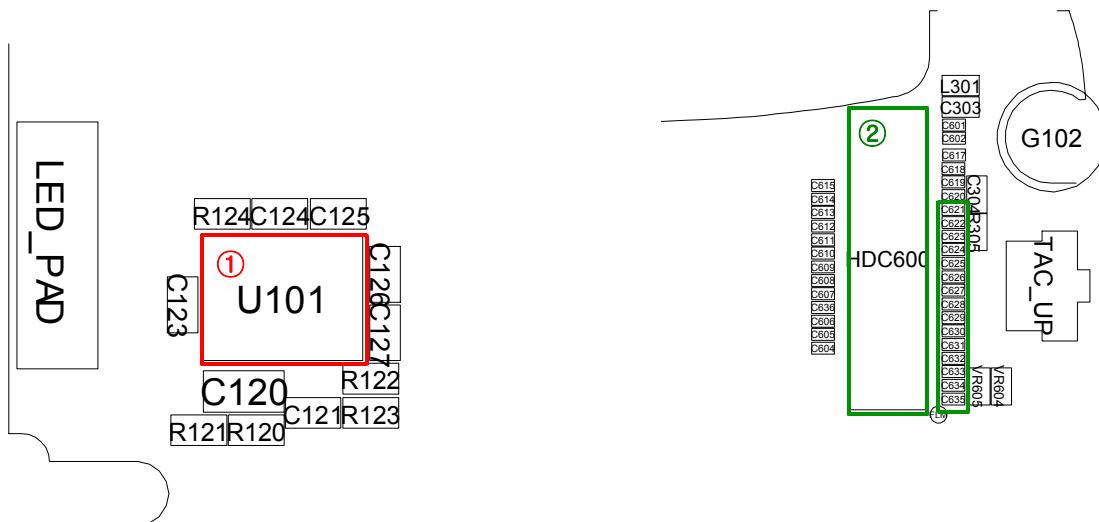
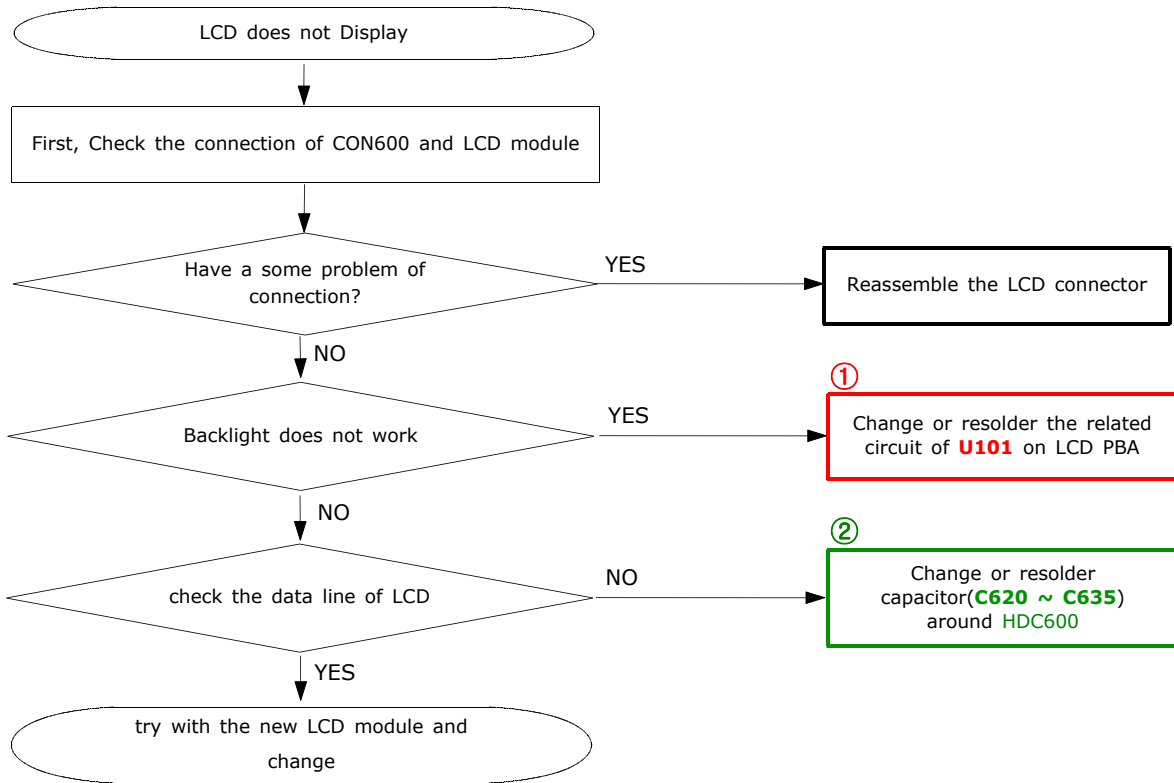


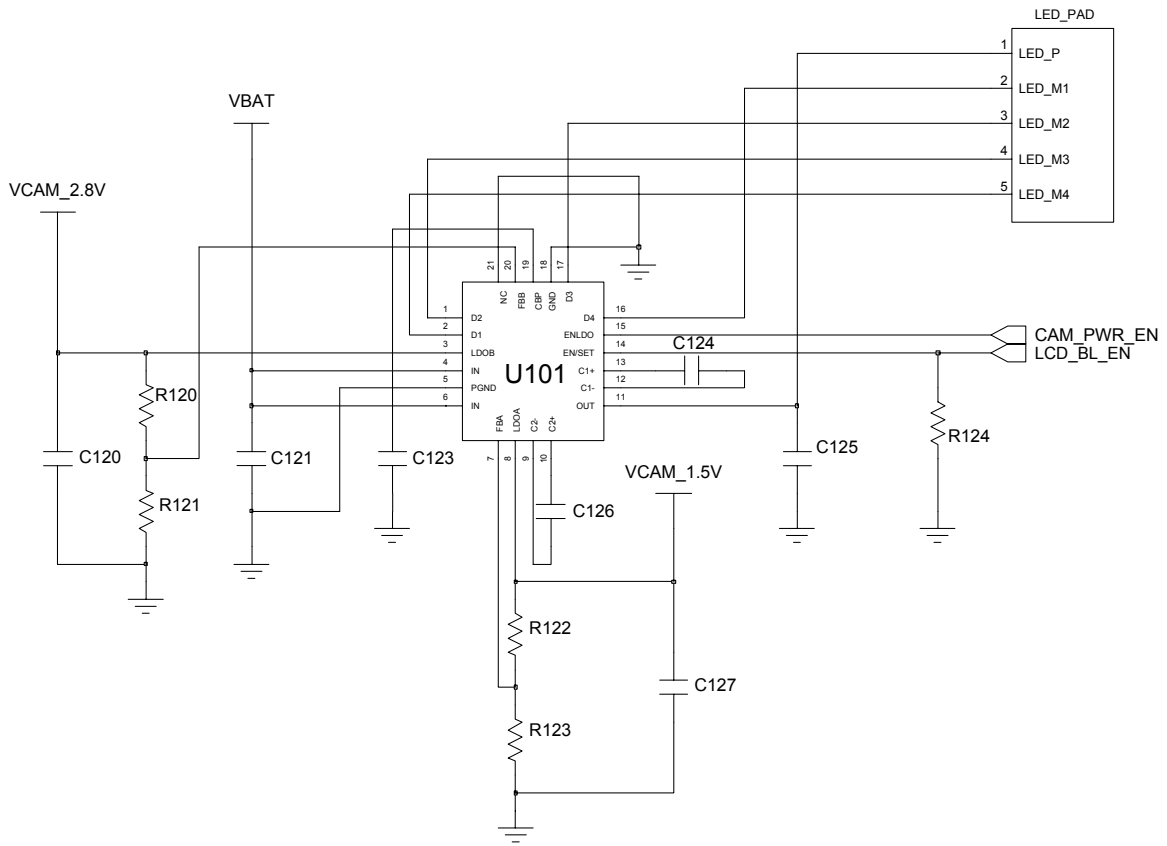
10-1-6. Speaker Part



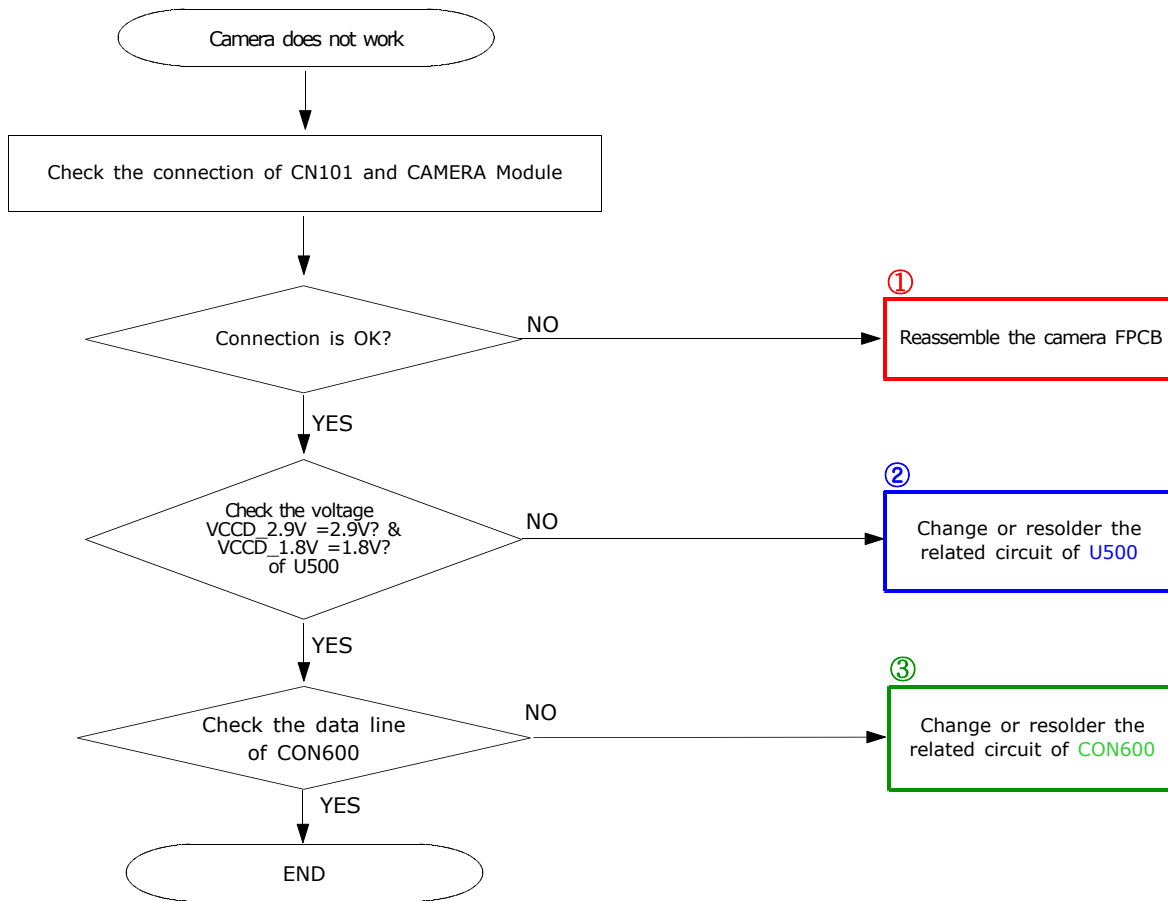


10-1-7. LCD





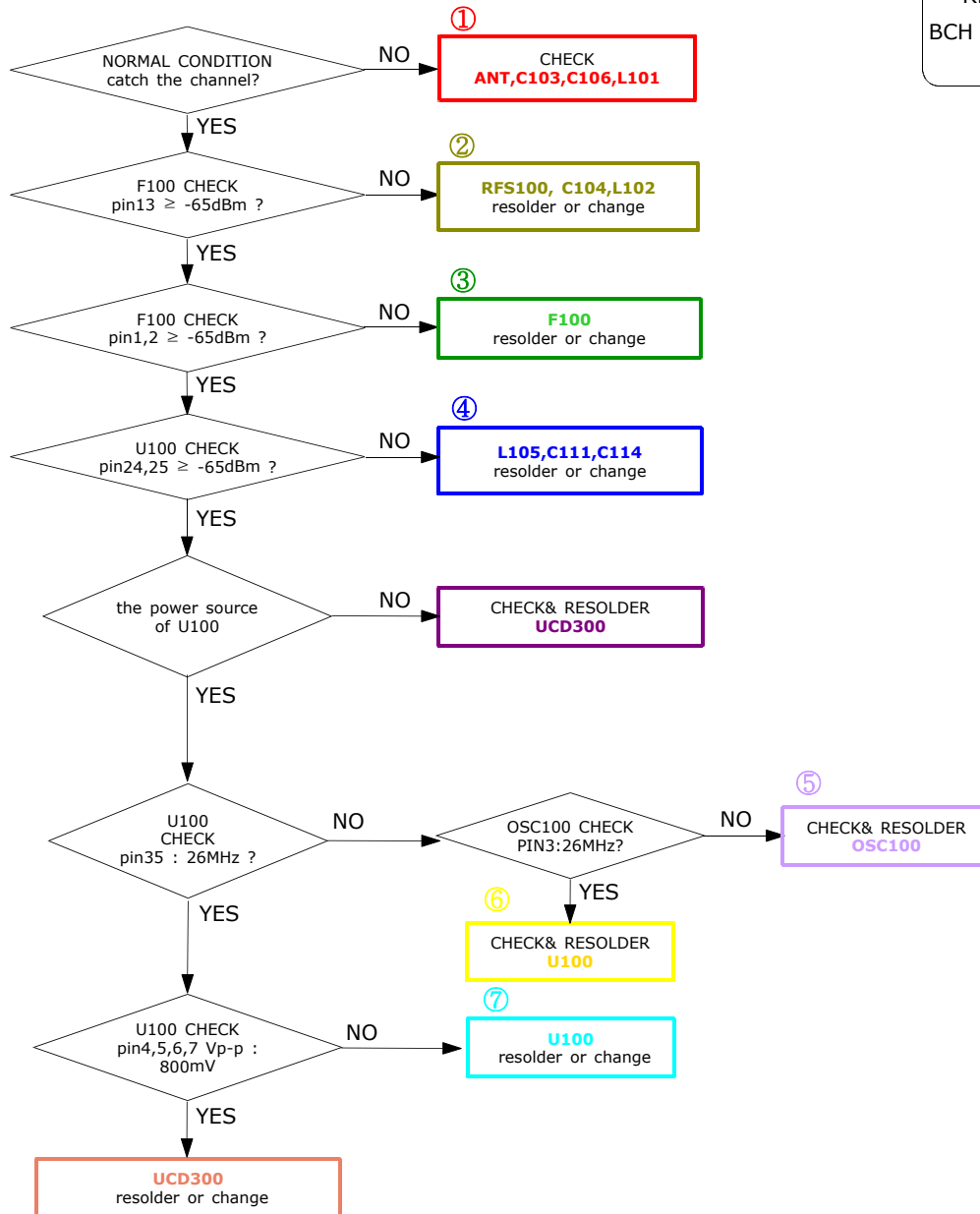
10-1-7. Camera

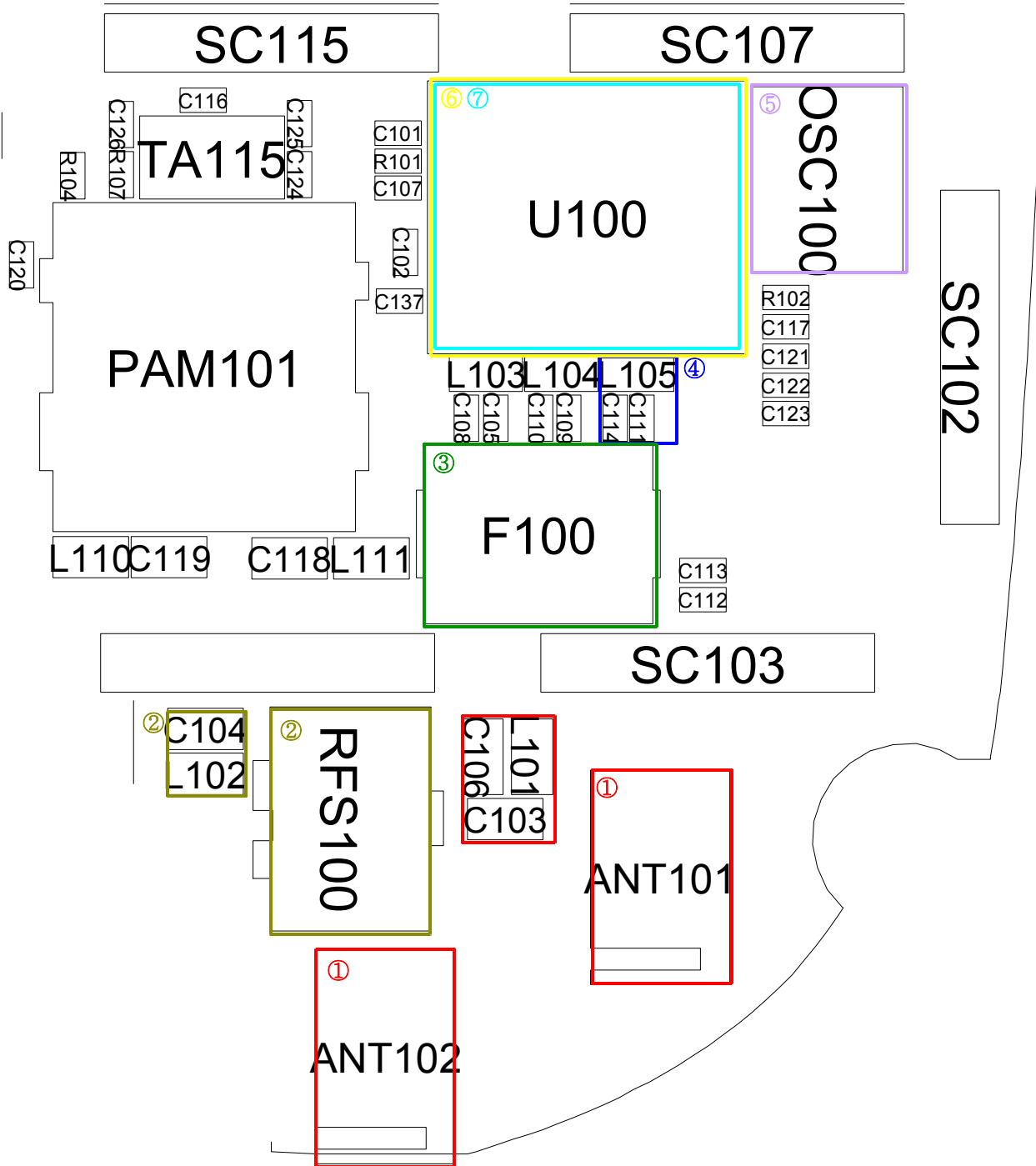


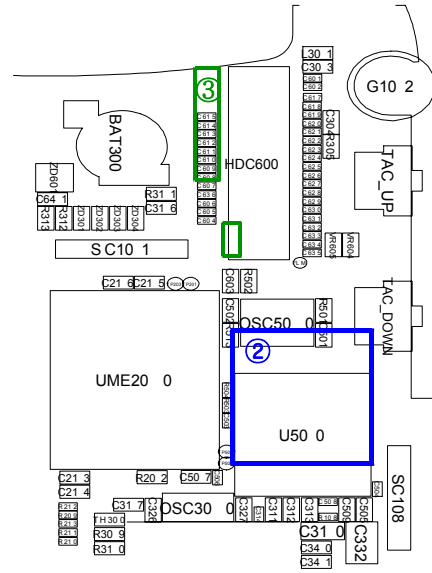
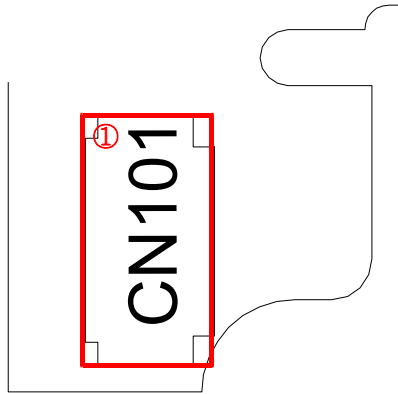
10-2.RF

10-2-1. EGSM RX

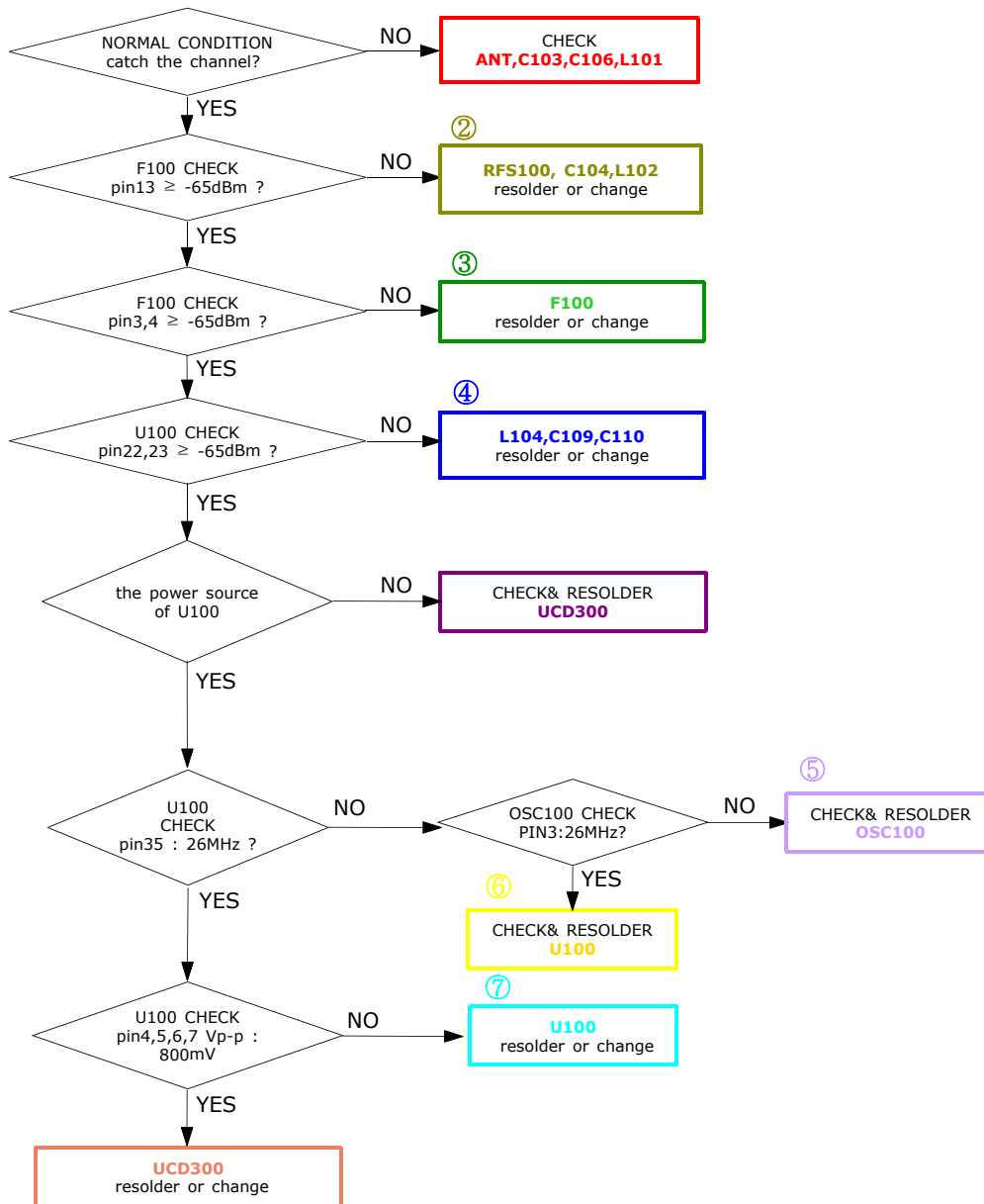
CONTINUOUS RX ON
RF INPUT : 62CH
BCH POWER : -60dBm

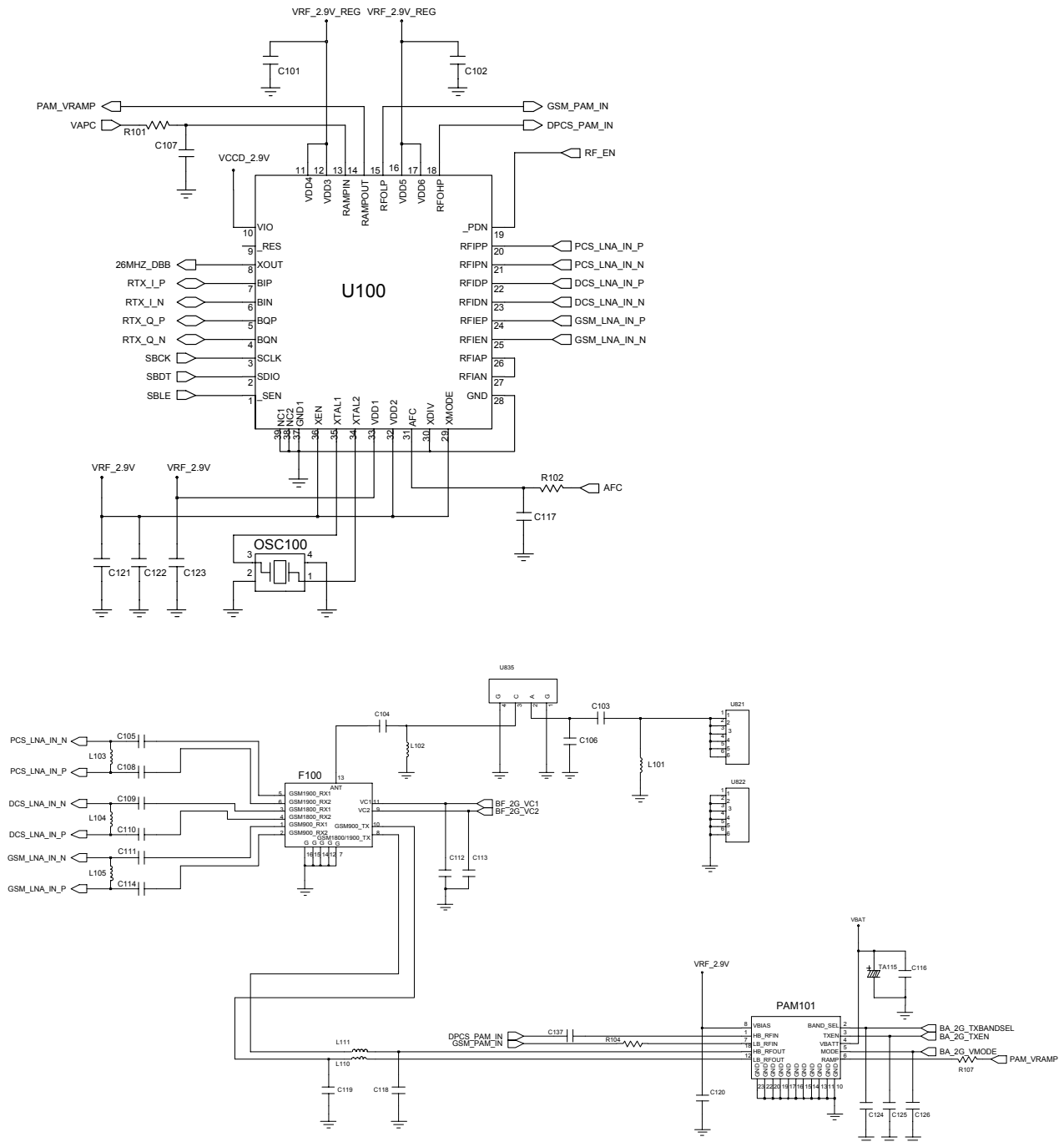


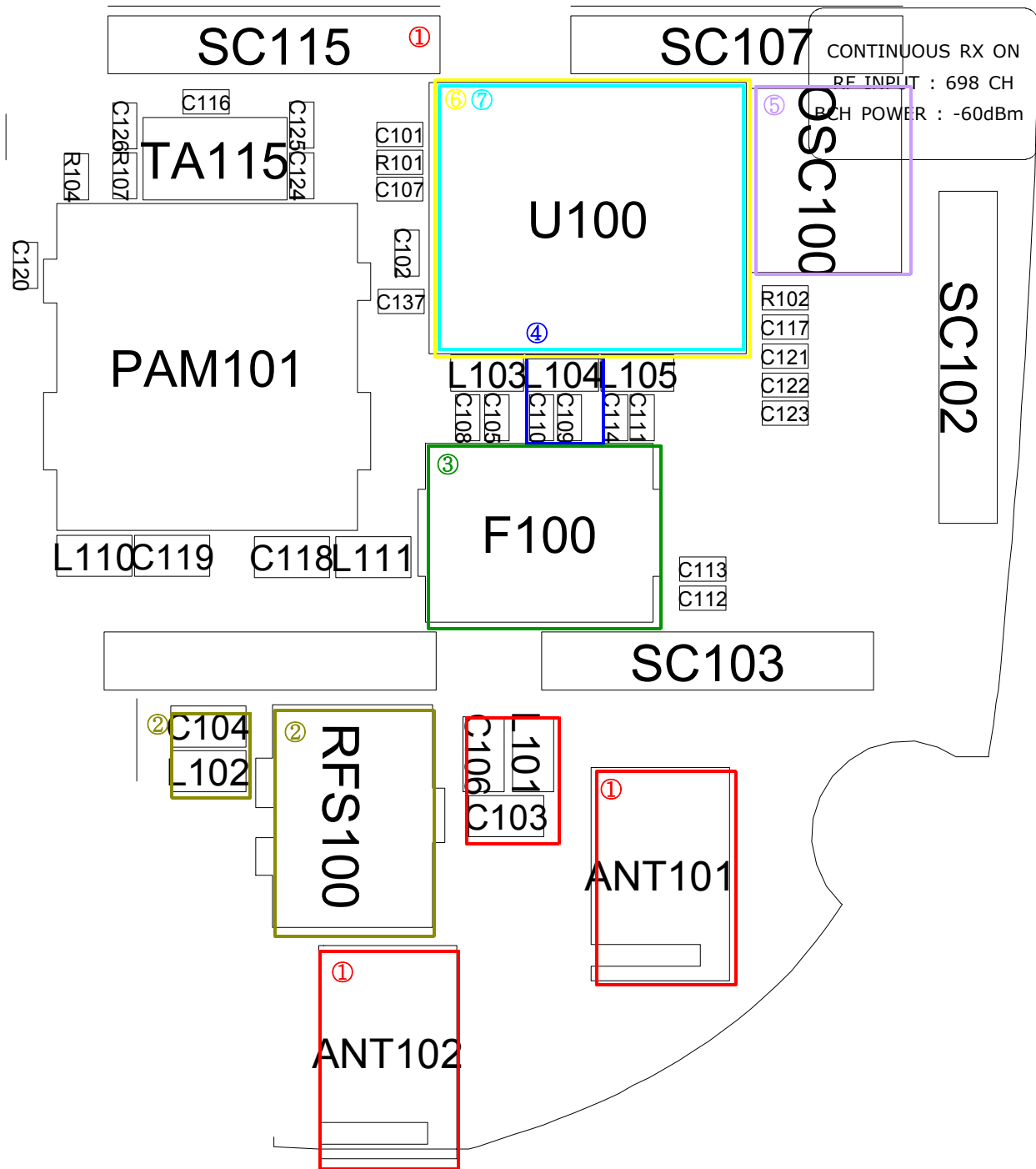




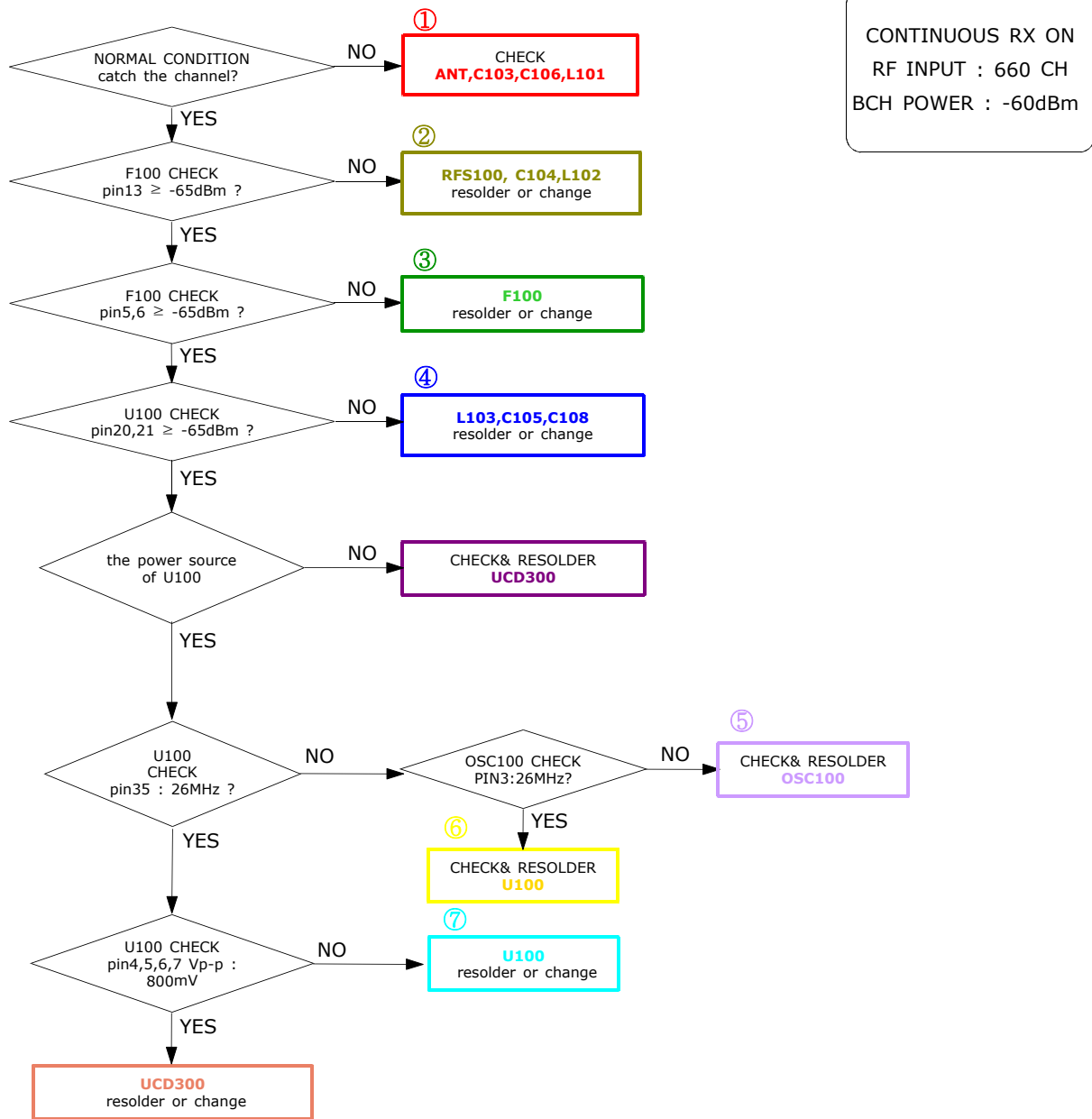
10-2-2. DCS RX

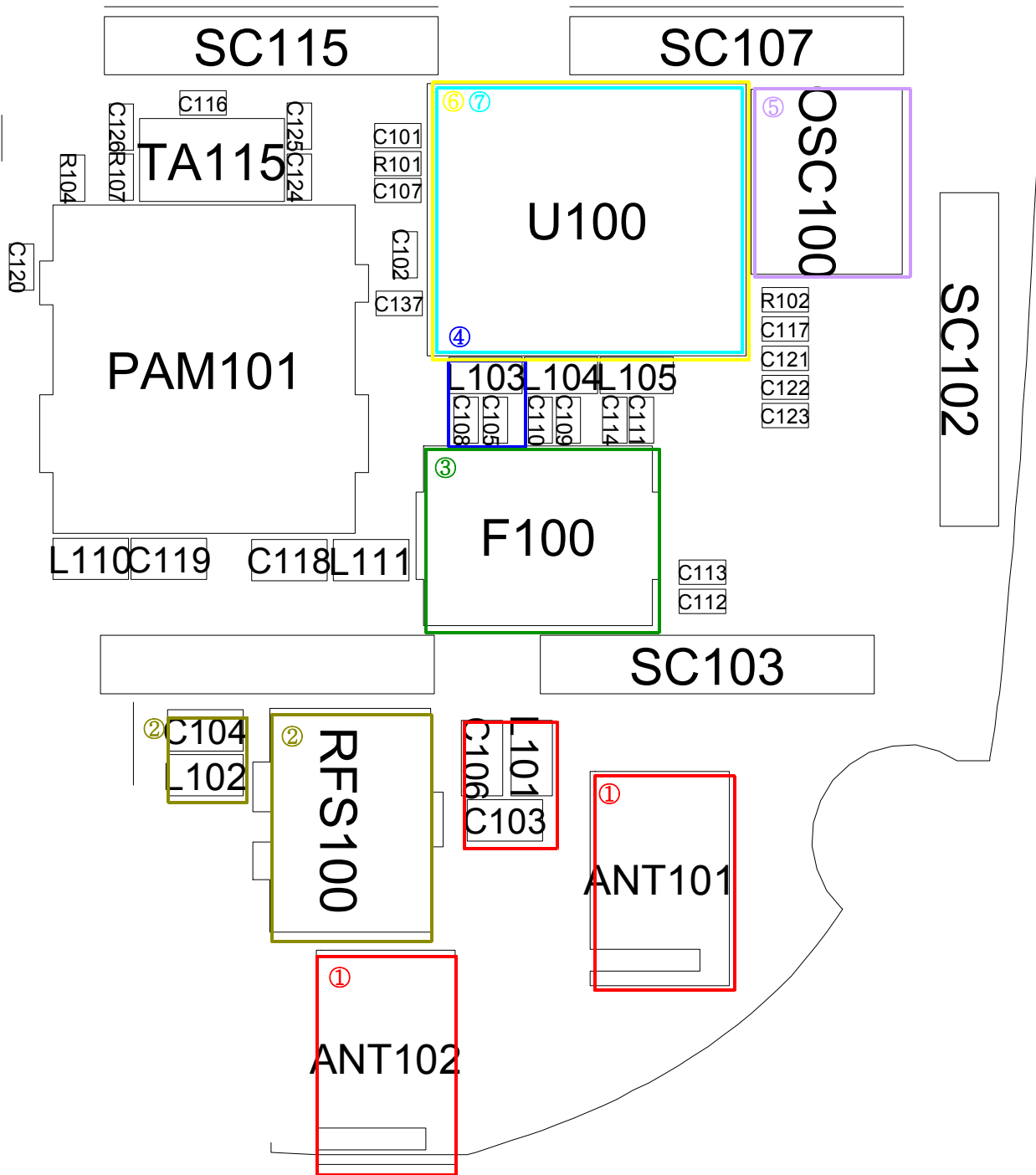




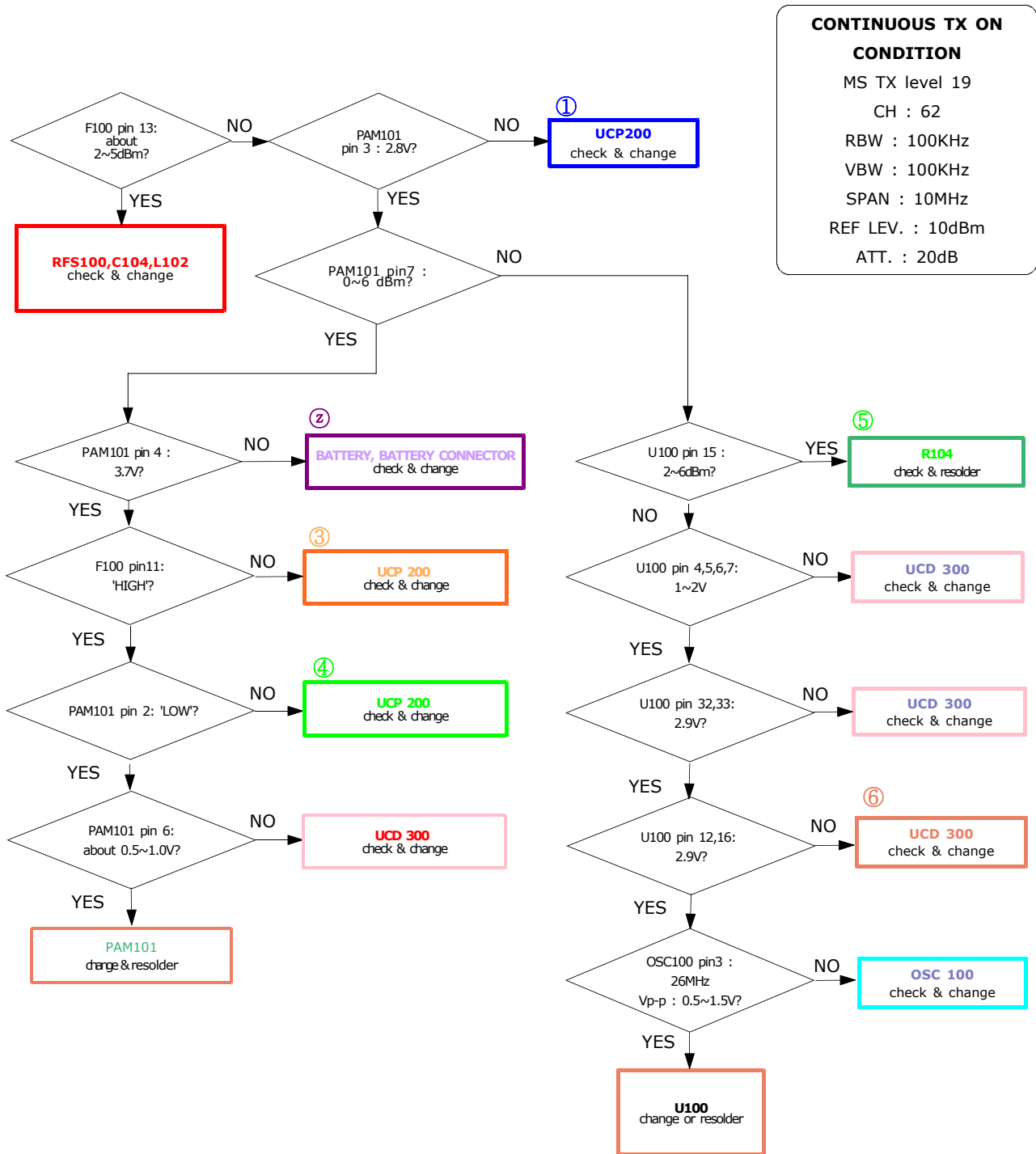


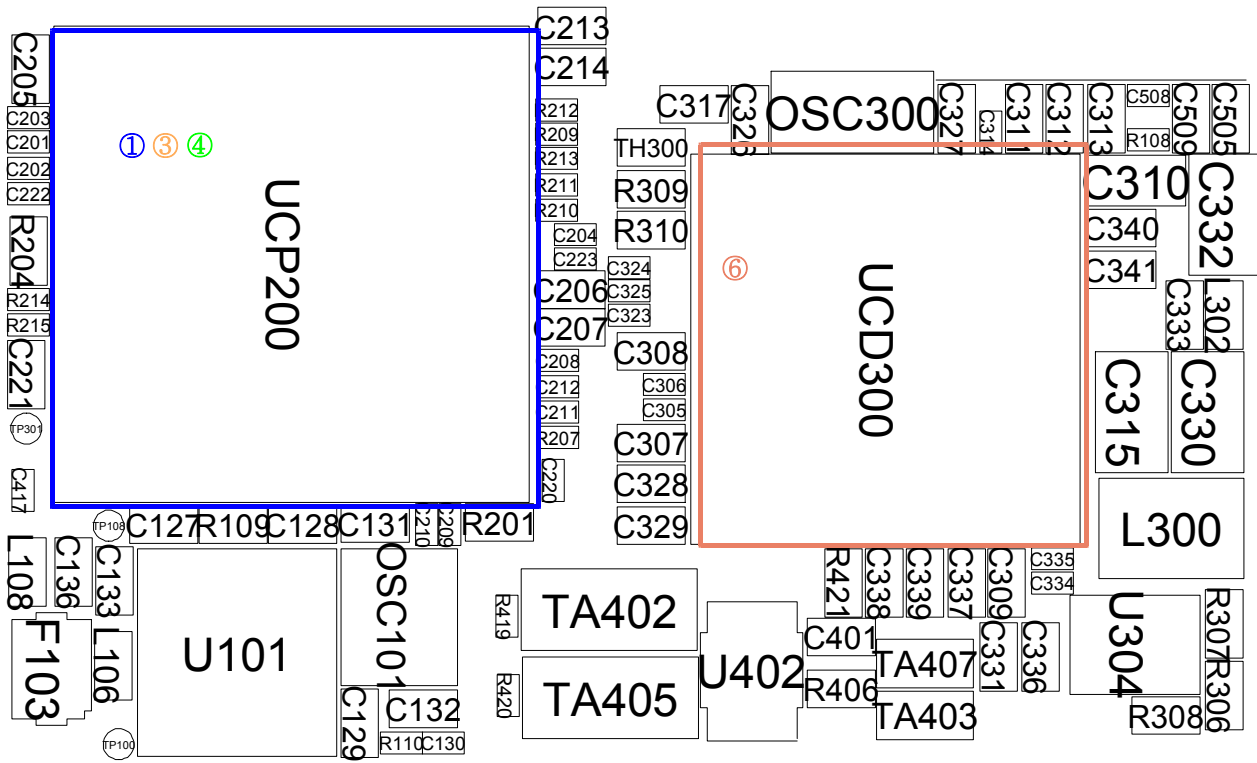
10-2-3. PCS RX





10-2-4.EGSM TX





10-2-5. DCS/PCS TX

