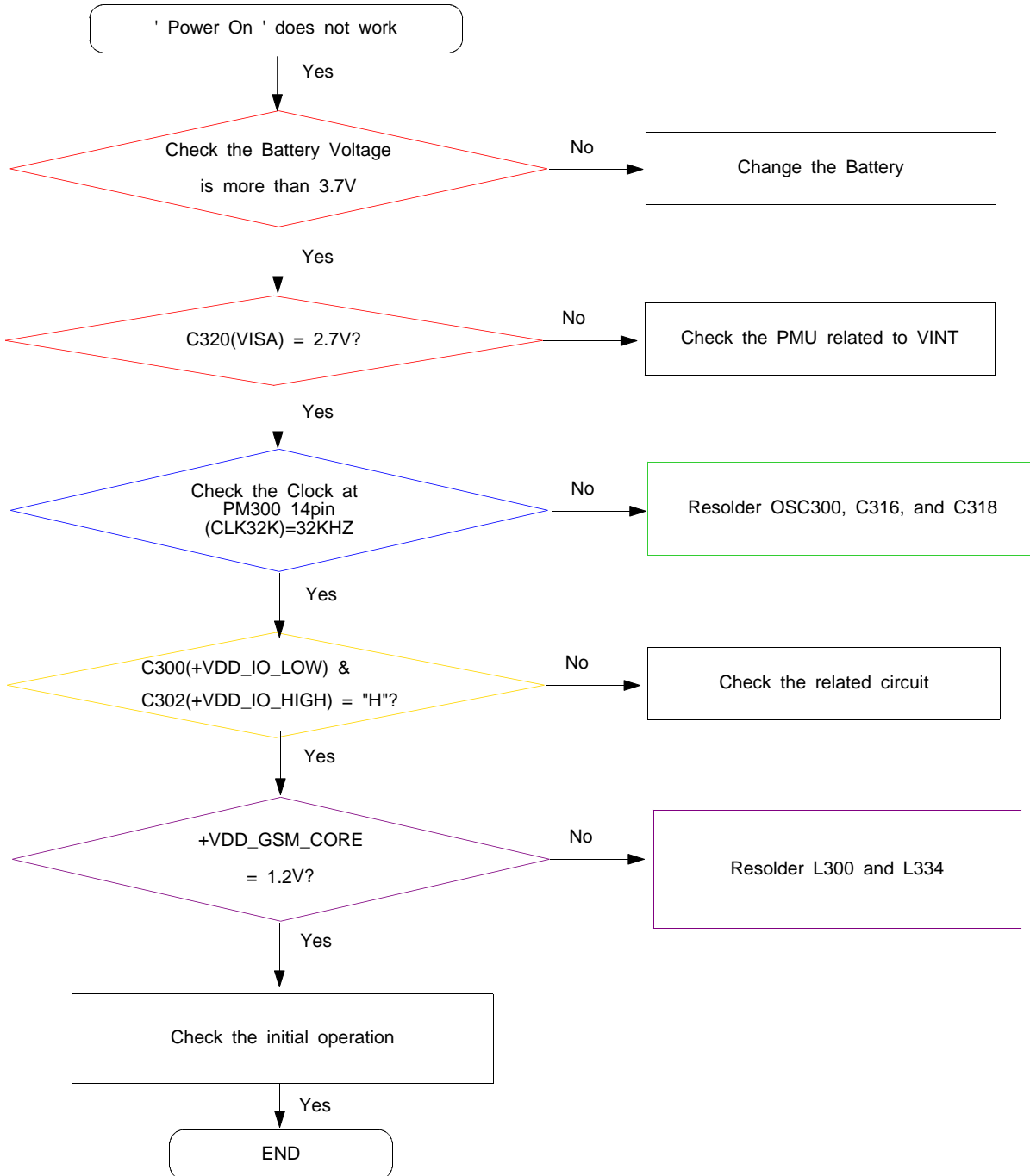
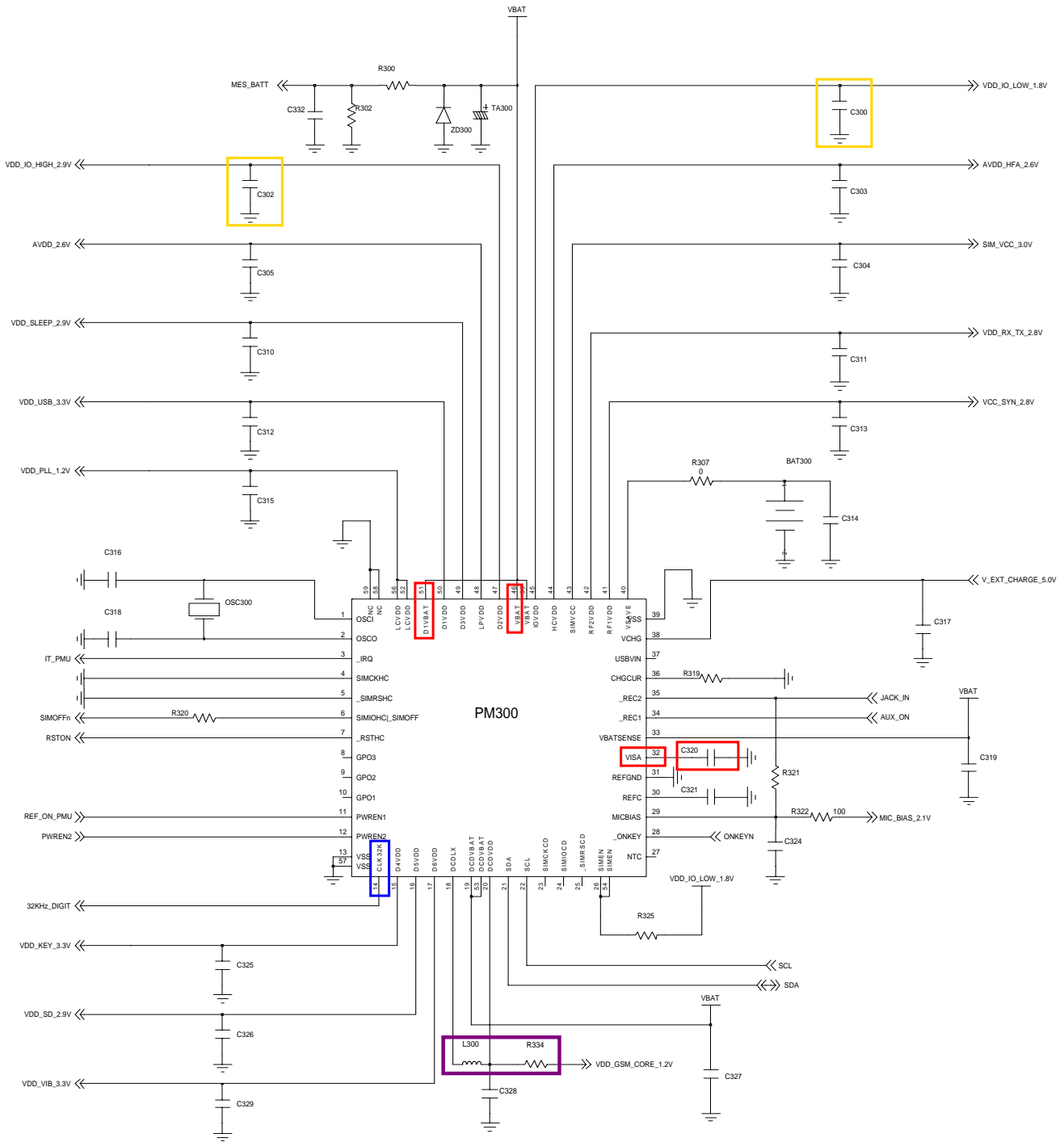


10. Flow Chart of Troubleshooting

10-1. Power On



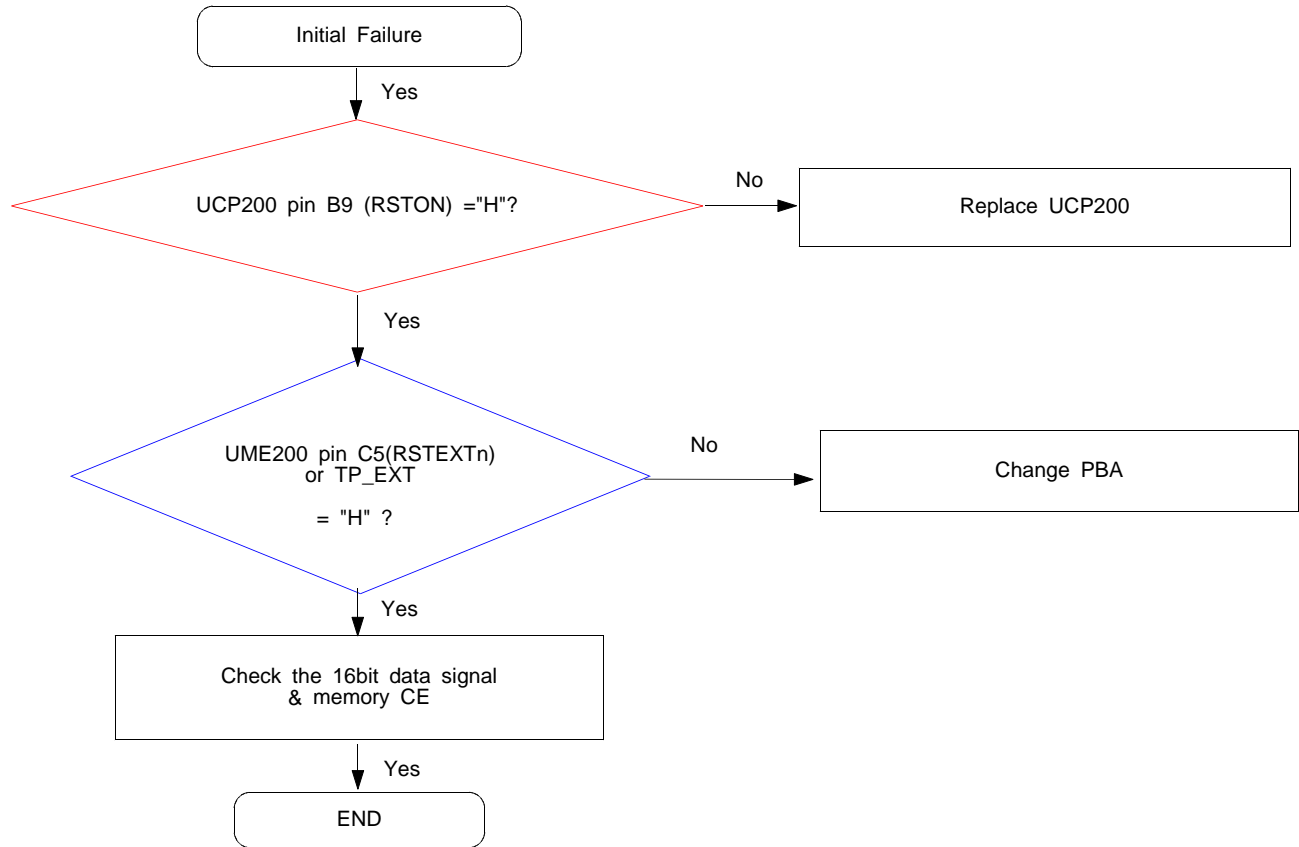
Flow Chart of Troubleshooting

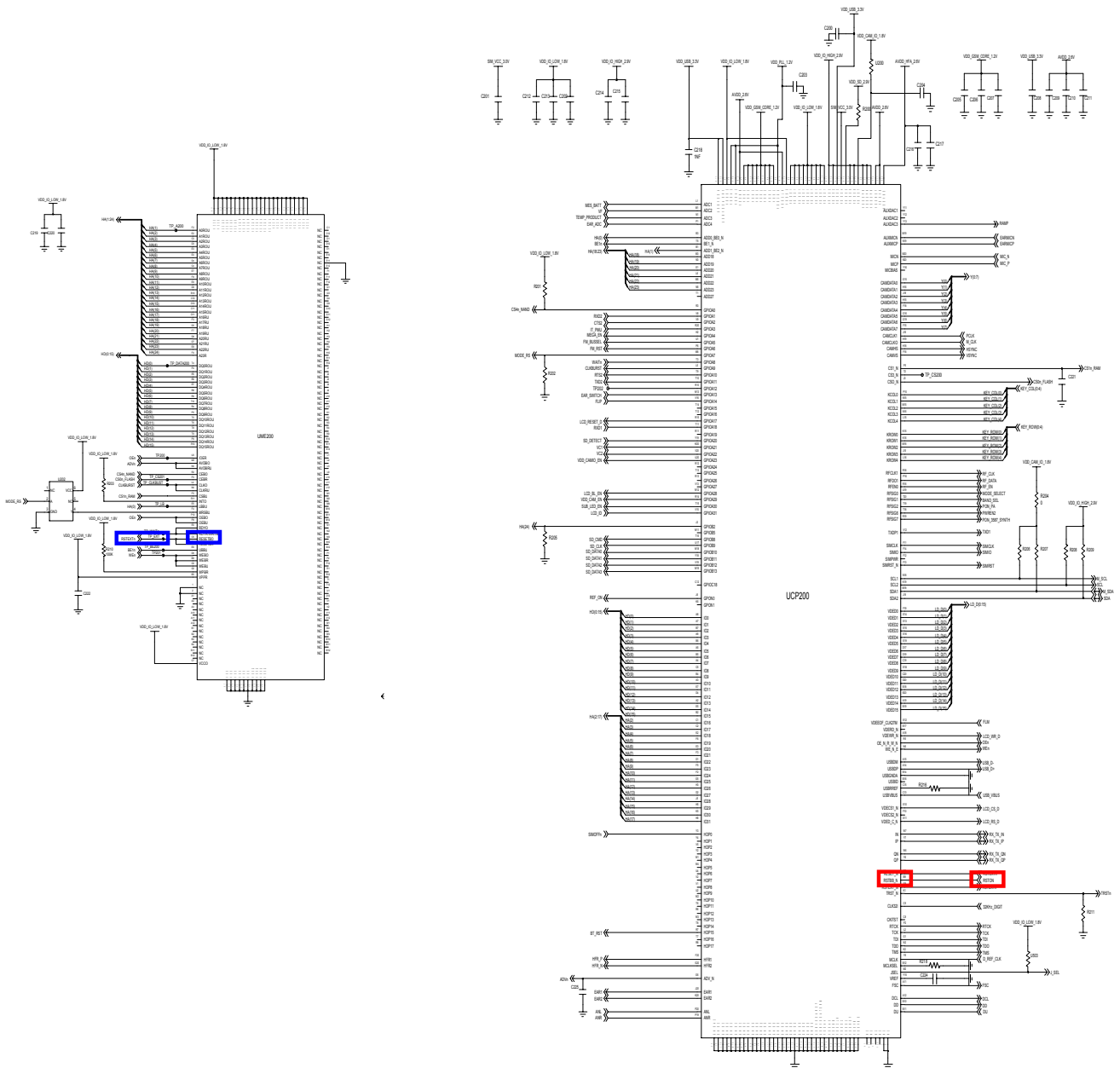


PMU

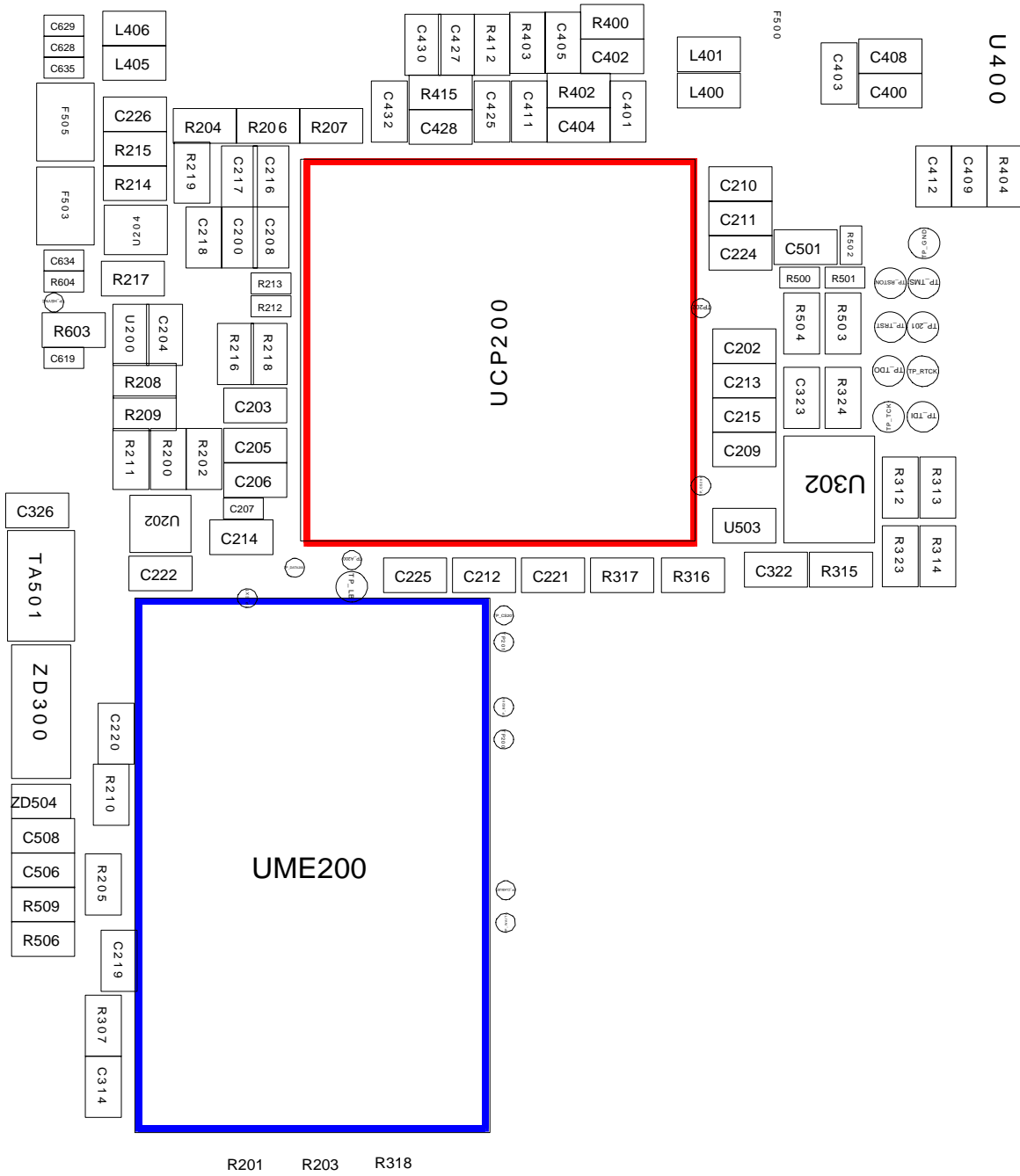


10-2. Initial

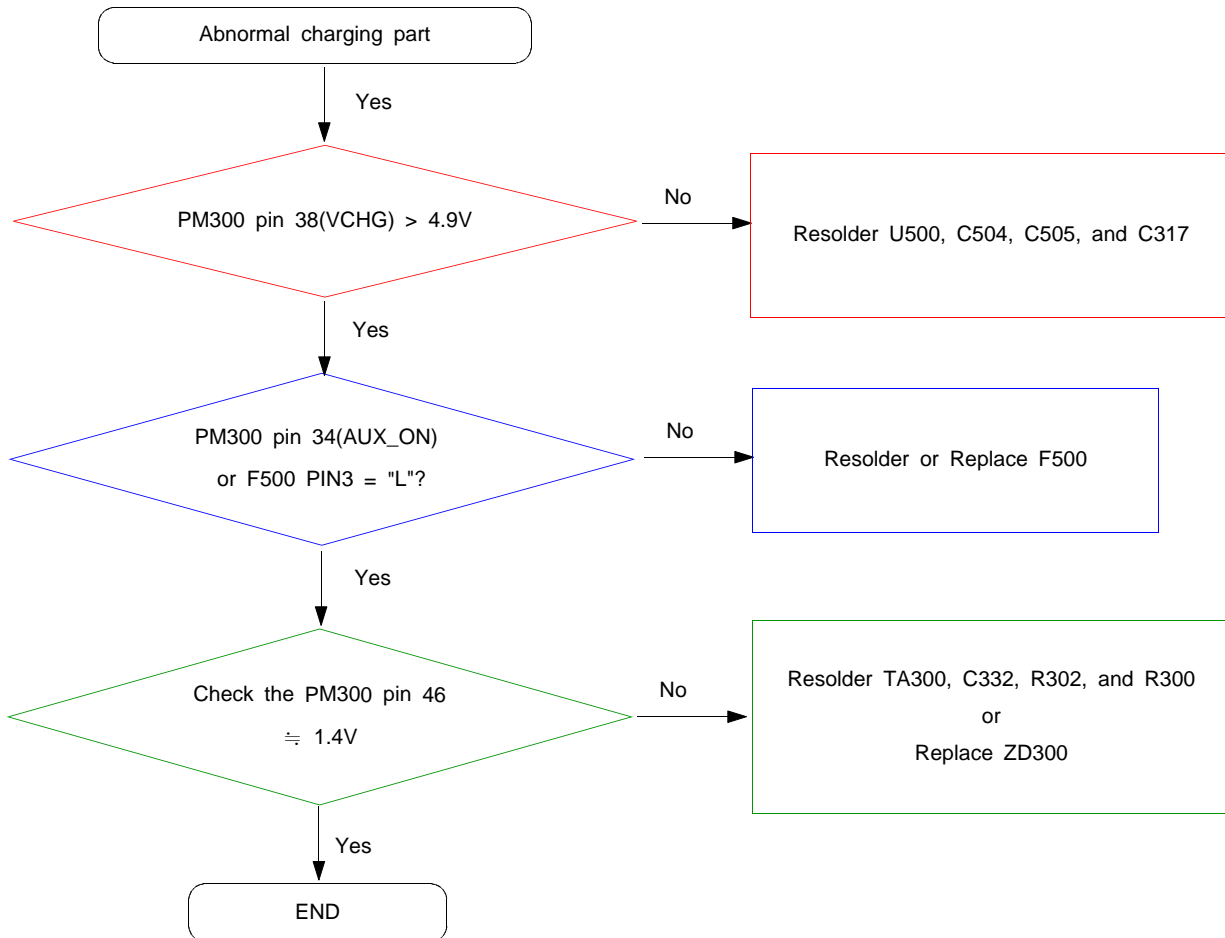




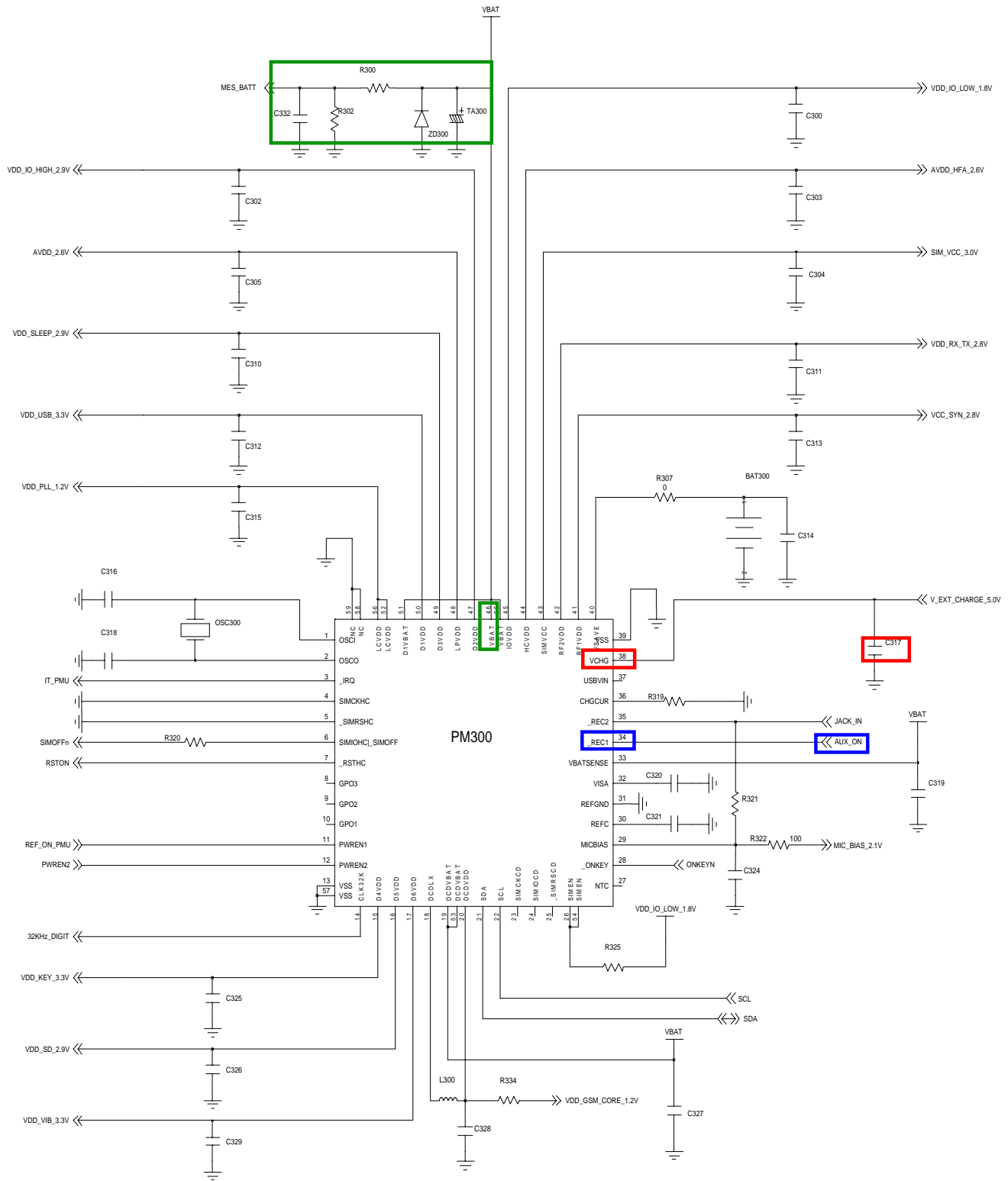
Flow Chart of Troubleshooting



10-3. Charging Part

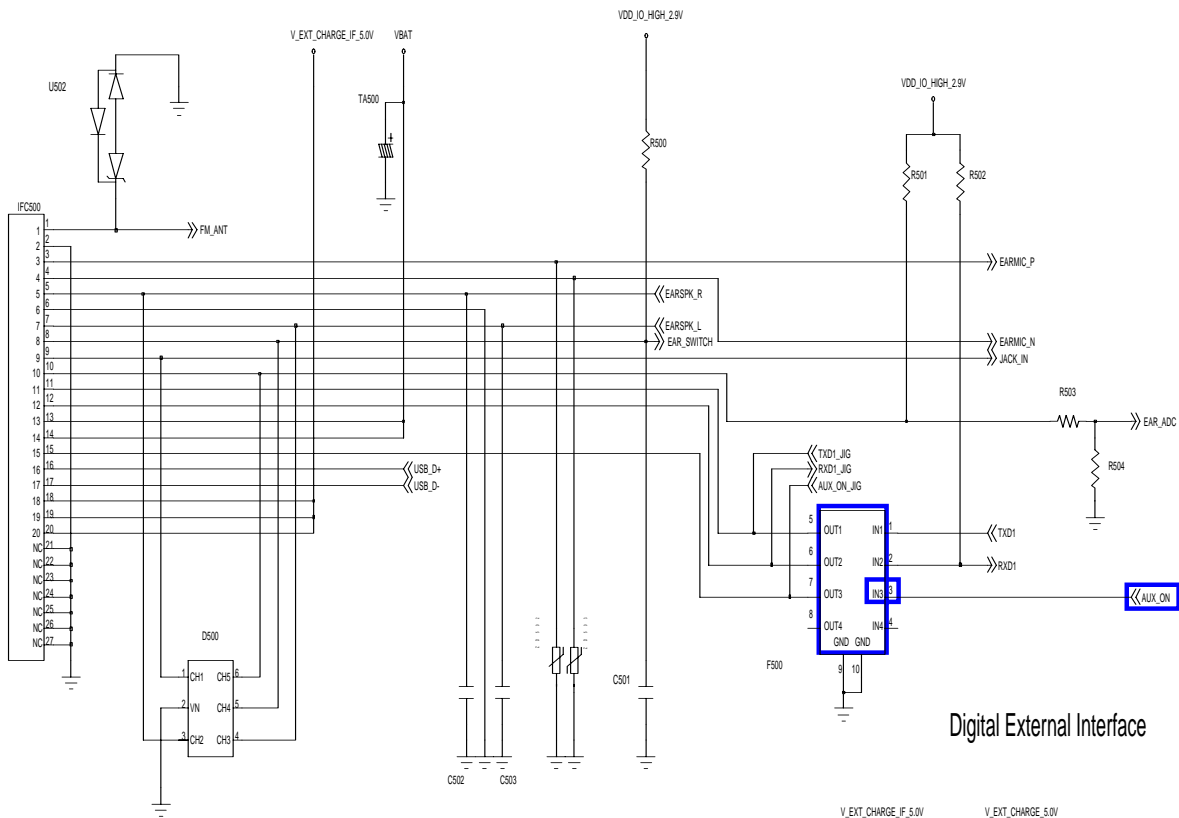


Flow Chart of Troubleshooting

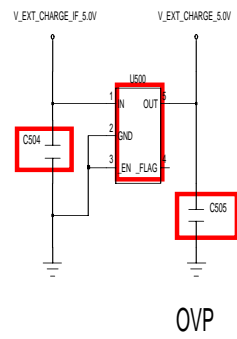


PMU

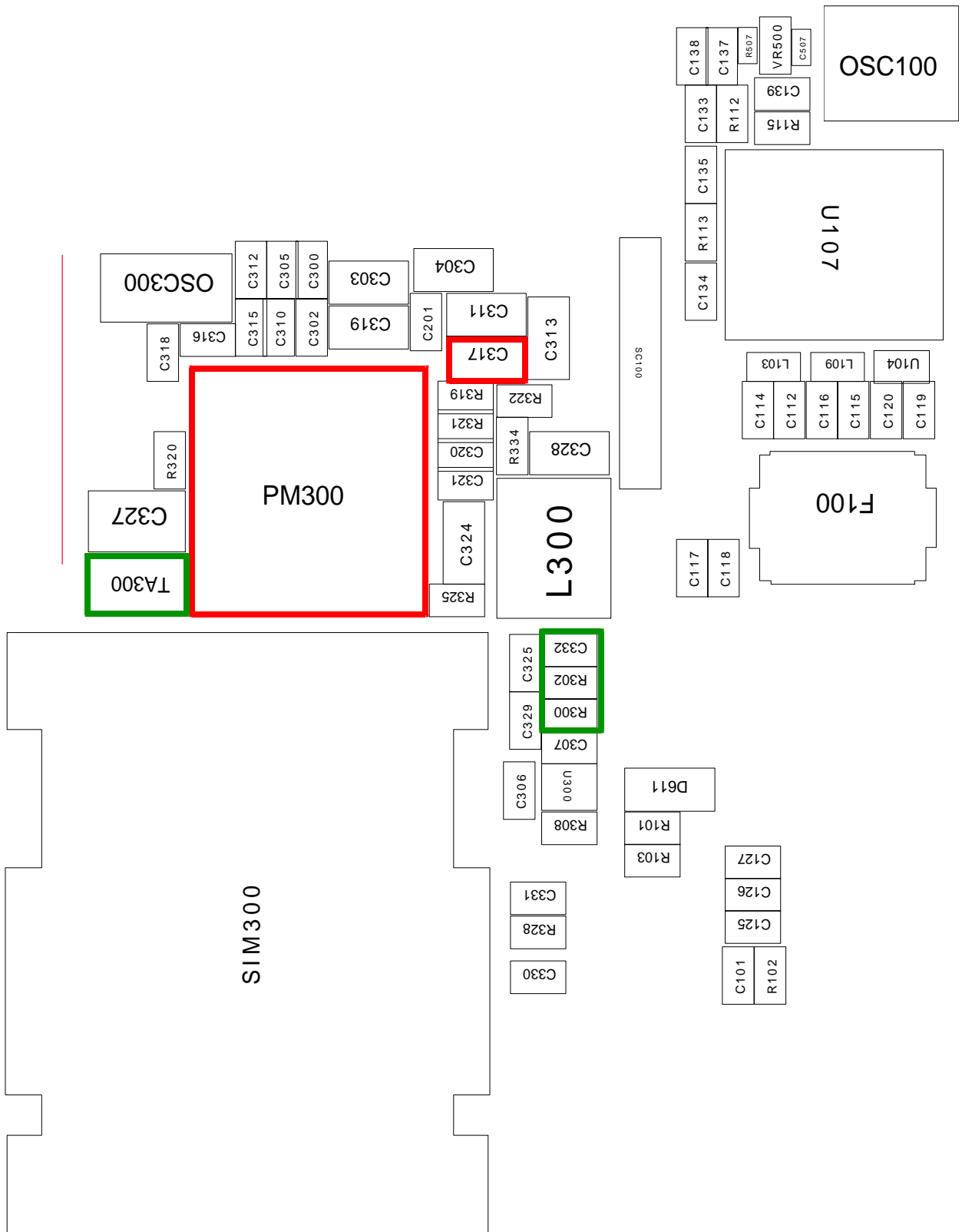
10-8

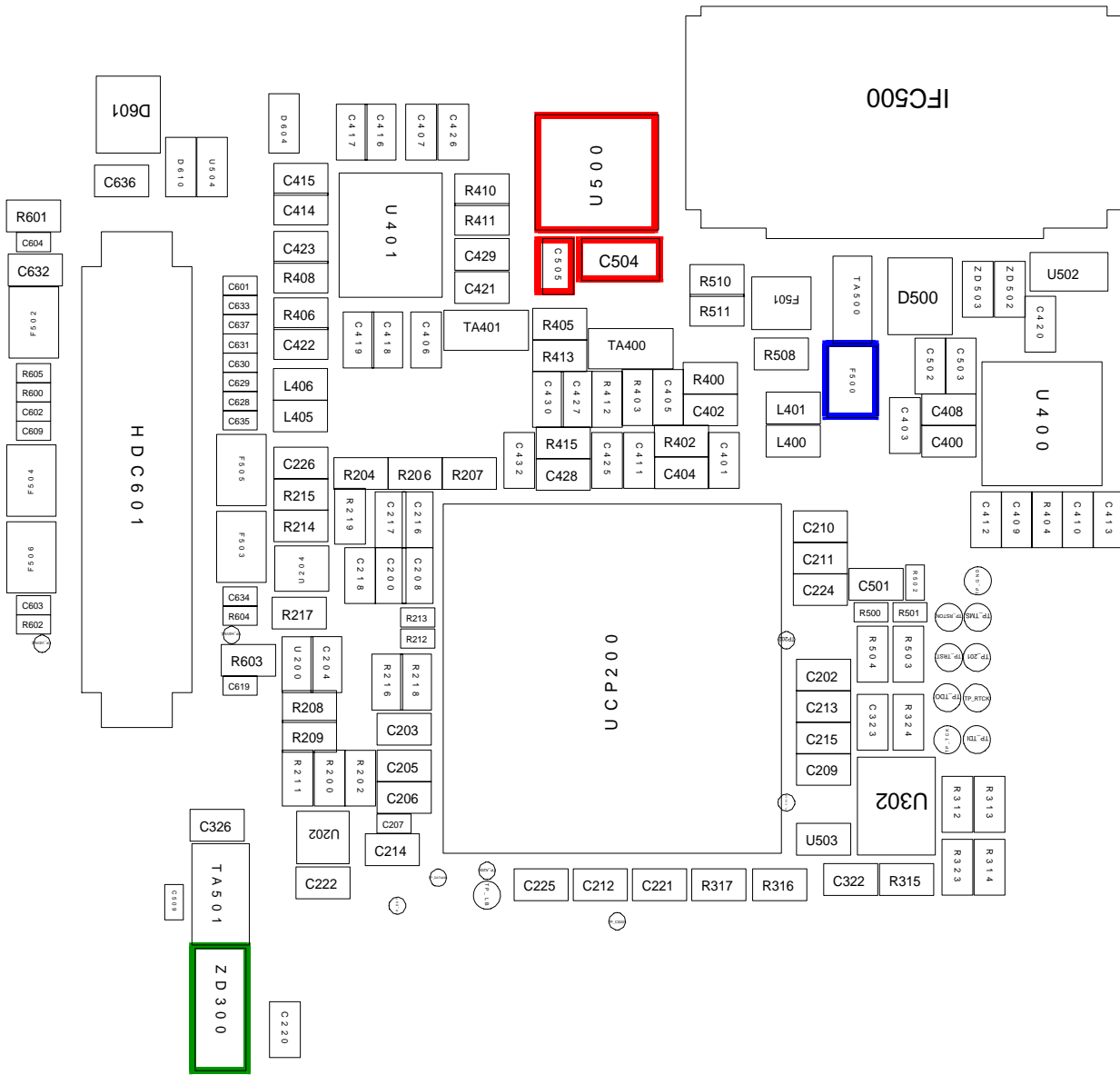


Digital External Interface

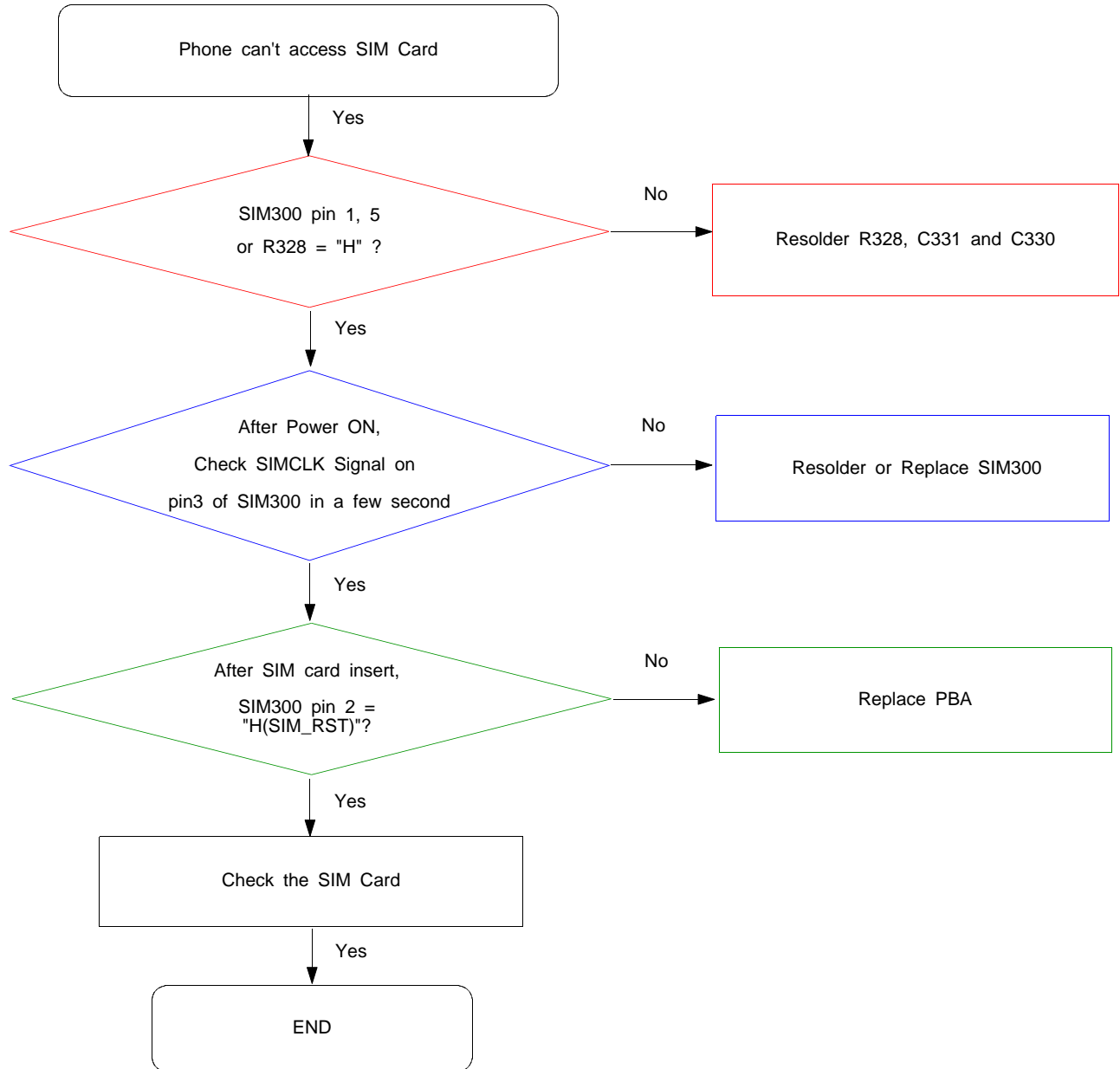


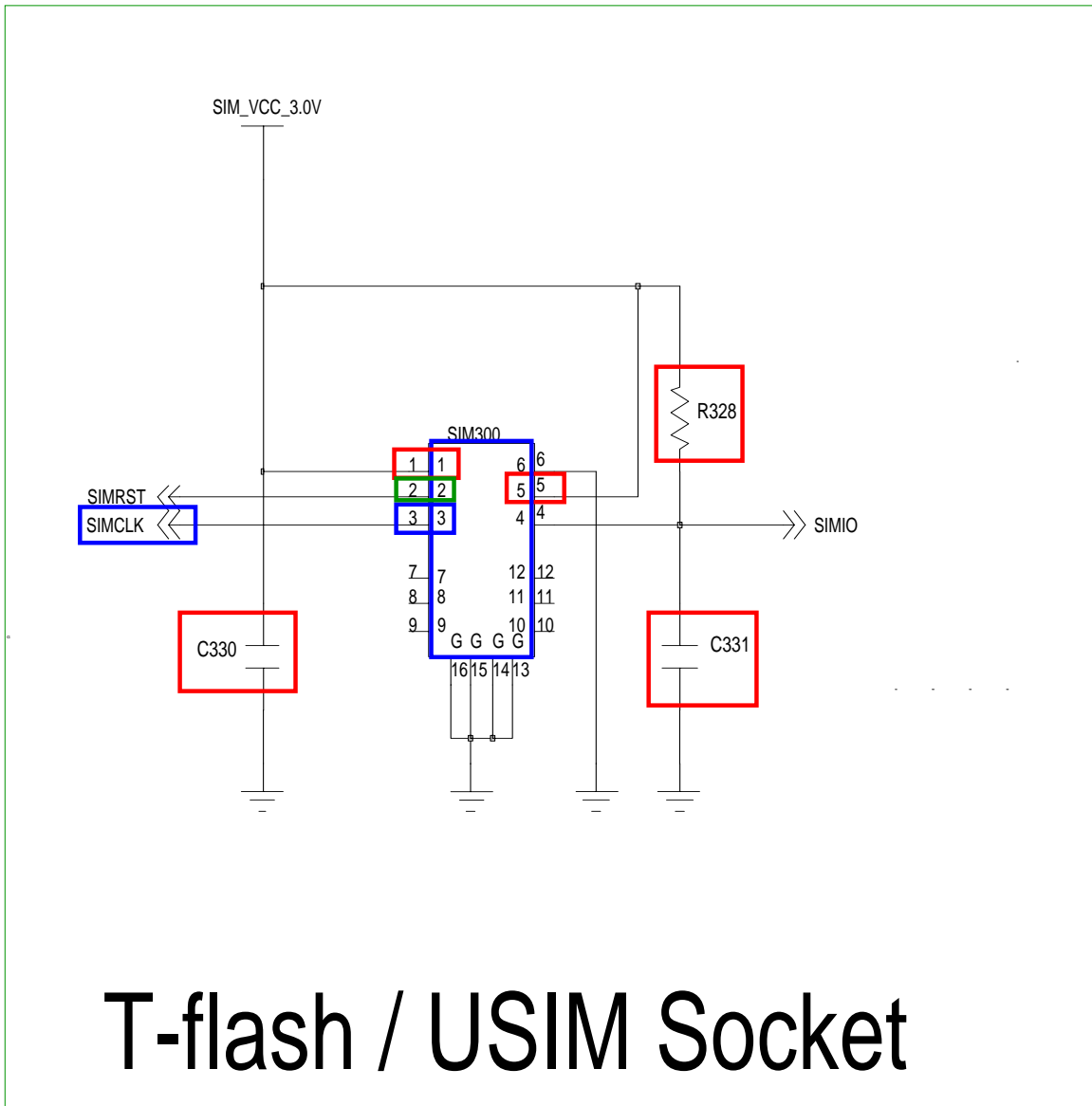
OVP

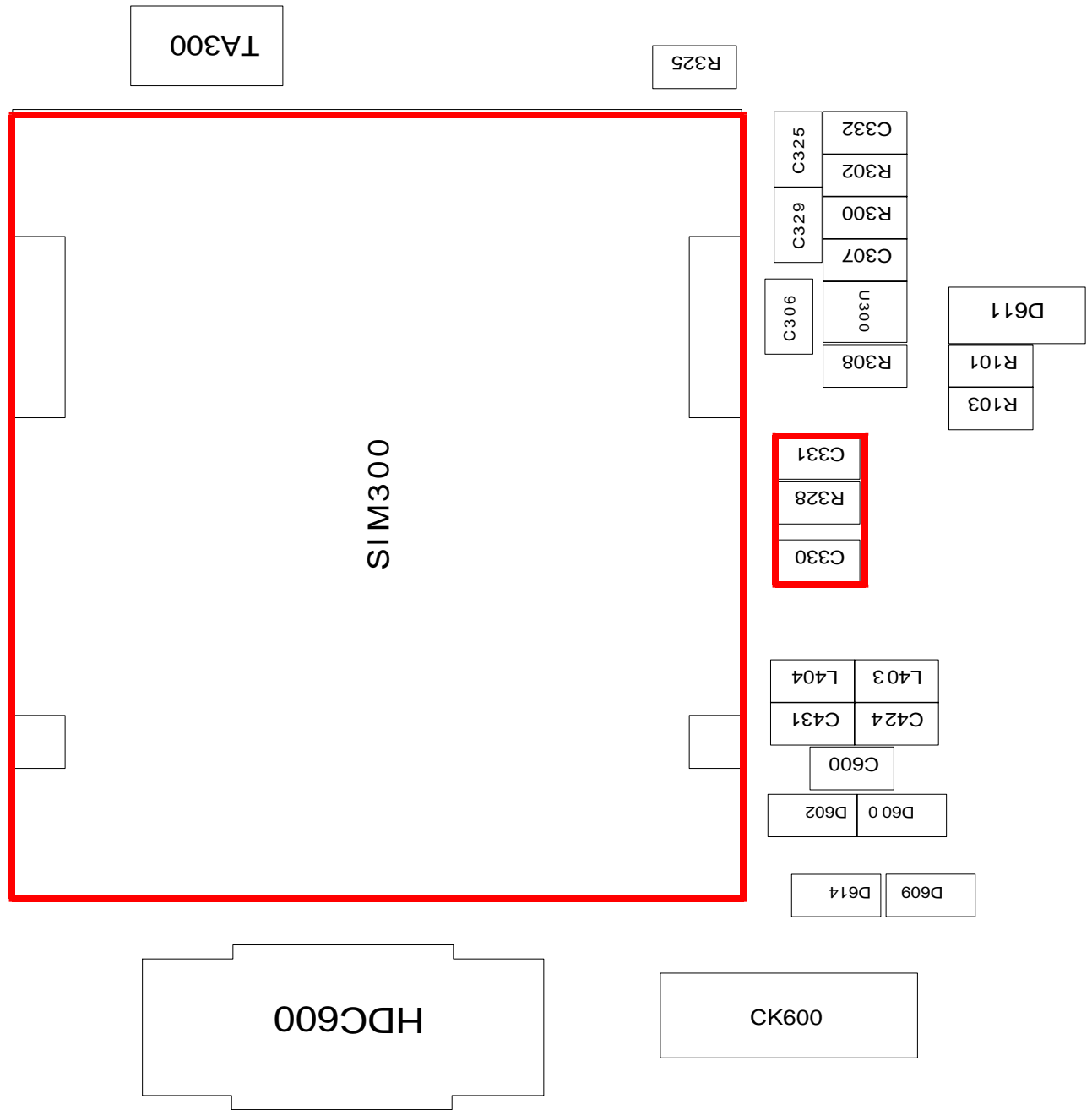




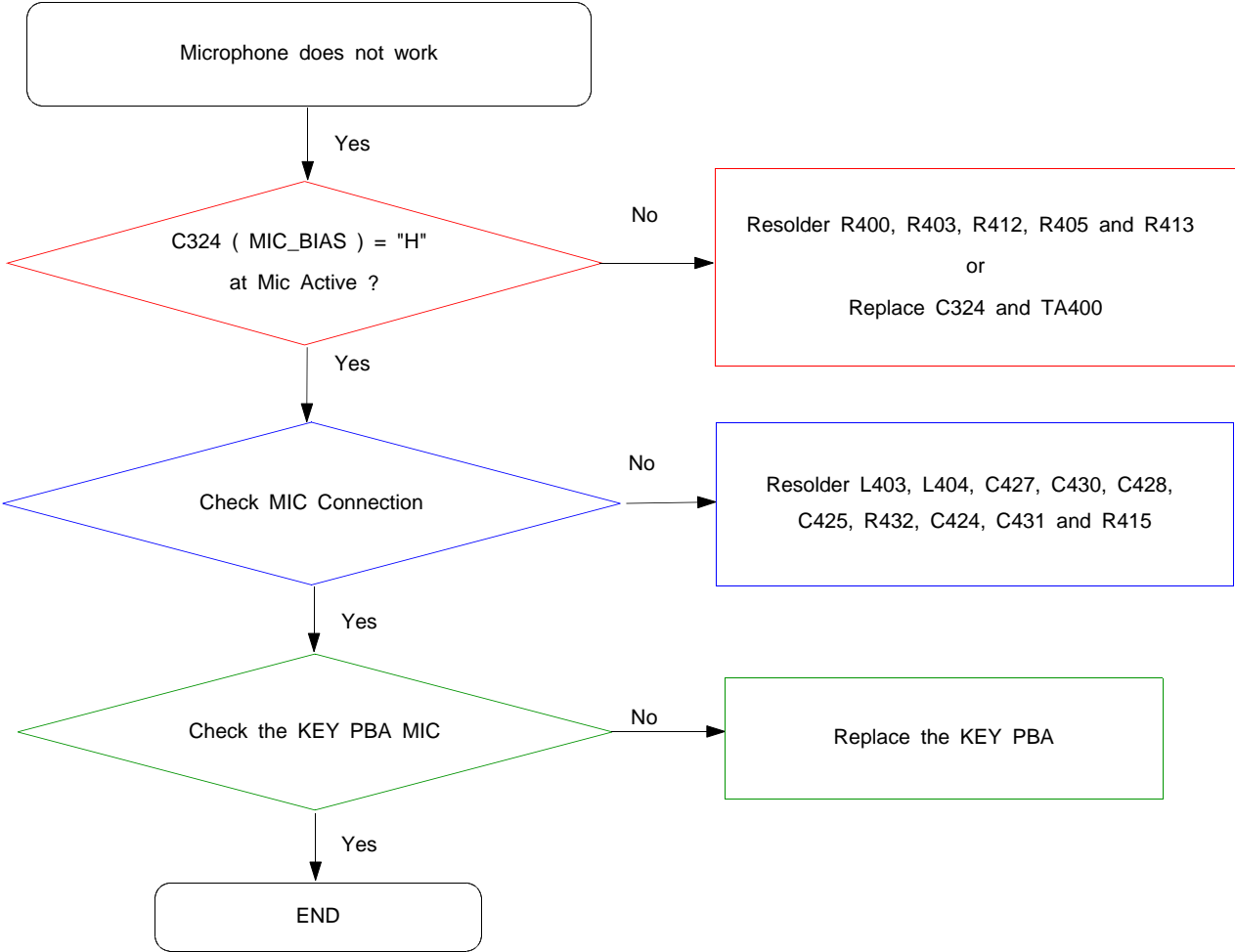
10-4. Sim Part



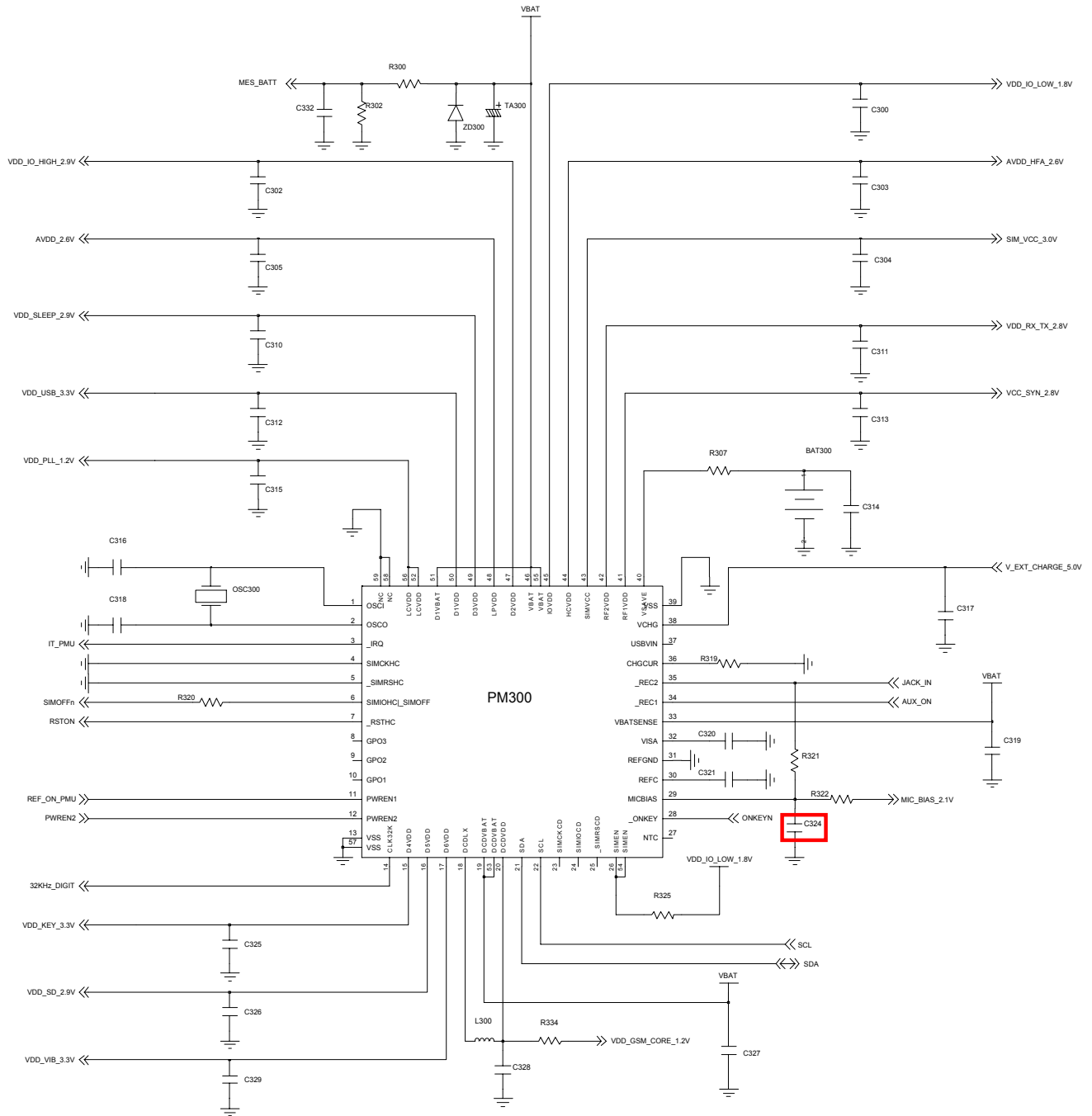




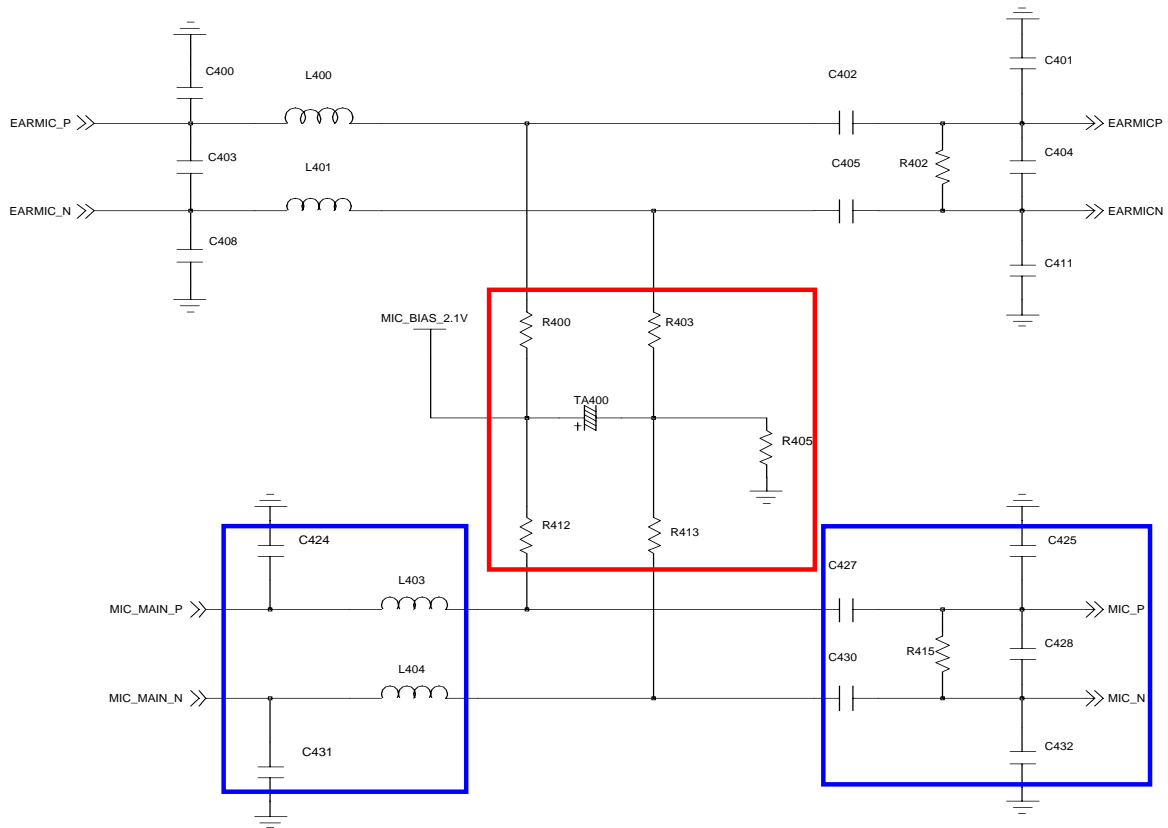
10-5. Microphone Part



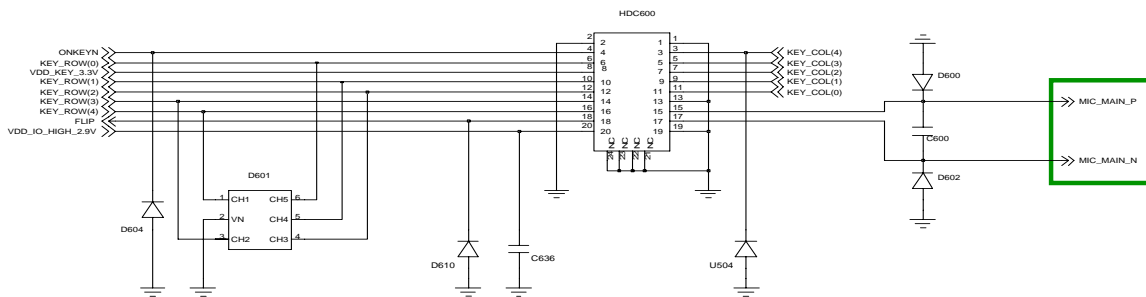
Flow Chart of Troubleshooting



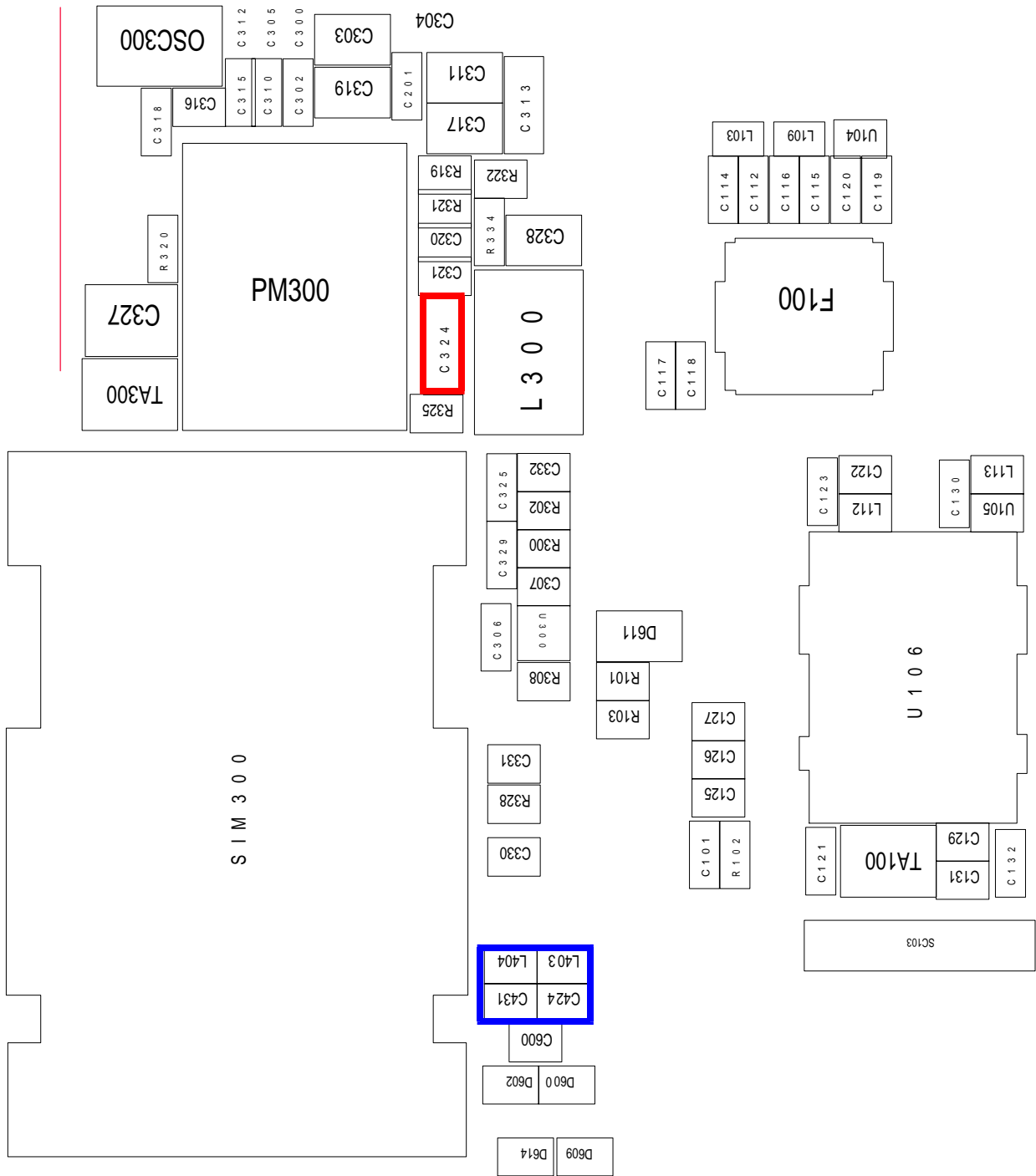
PMU



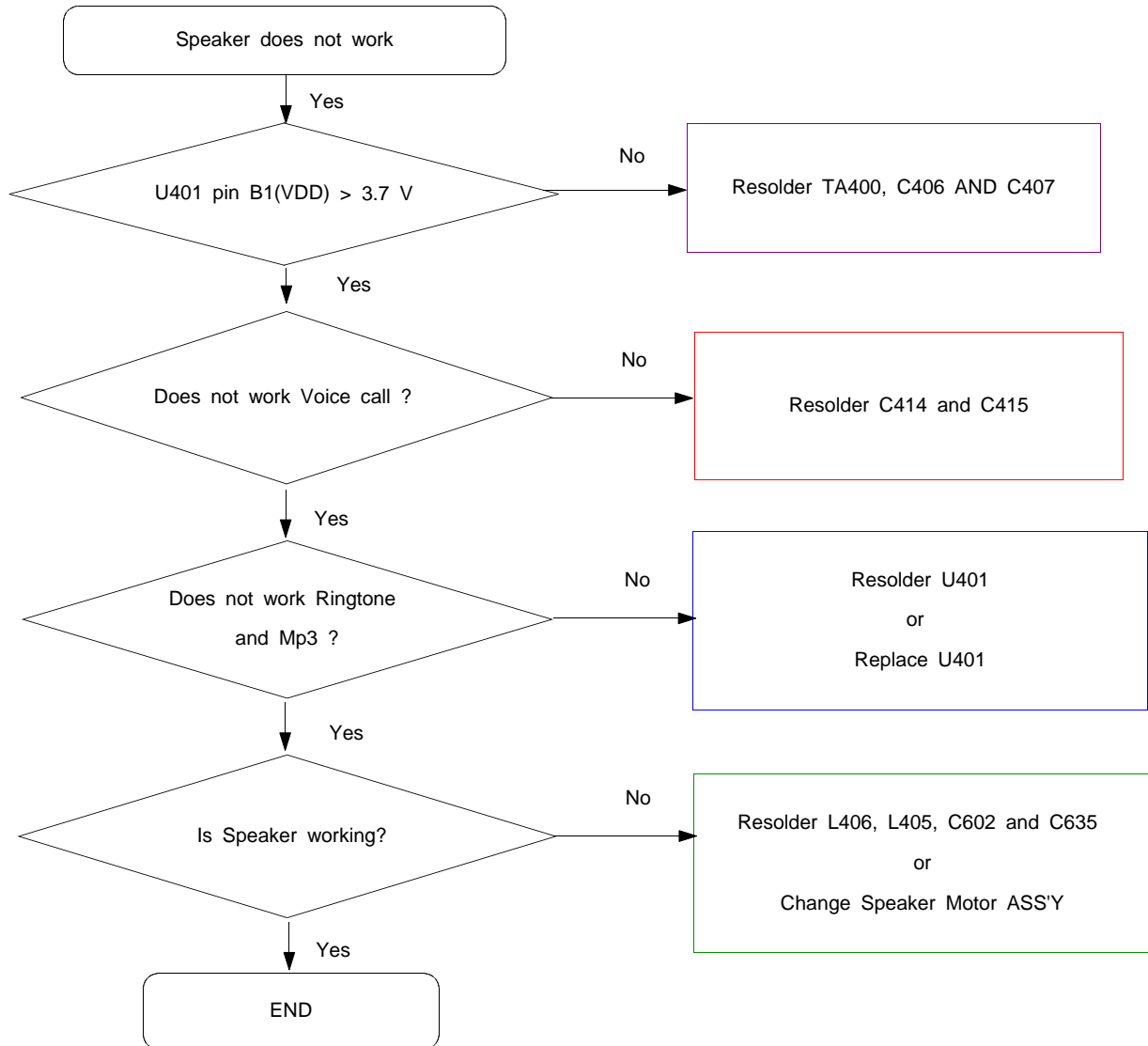
MICROPHONE



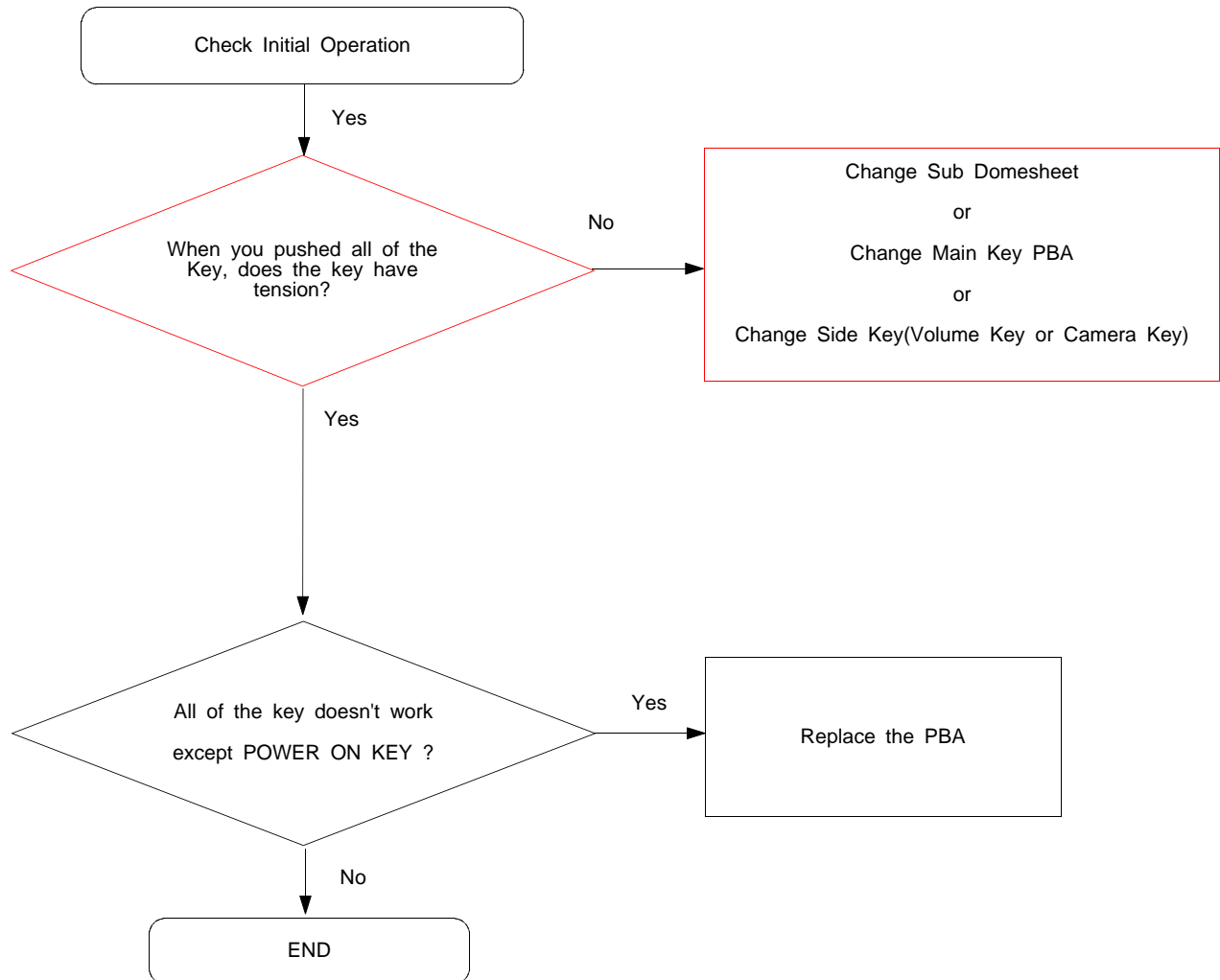
KEY PBA CON

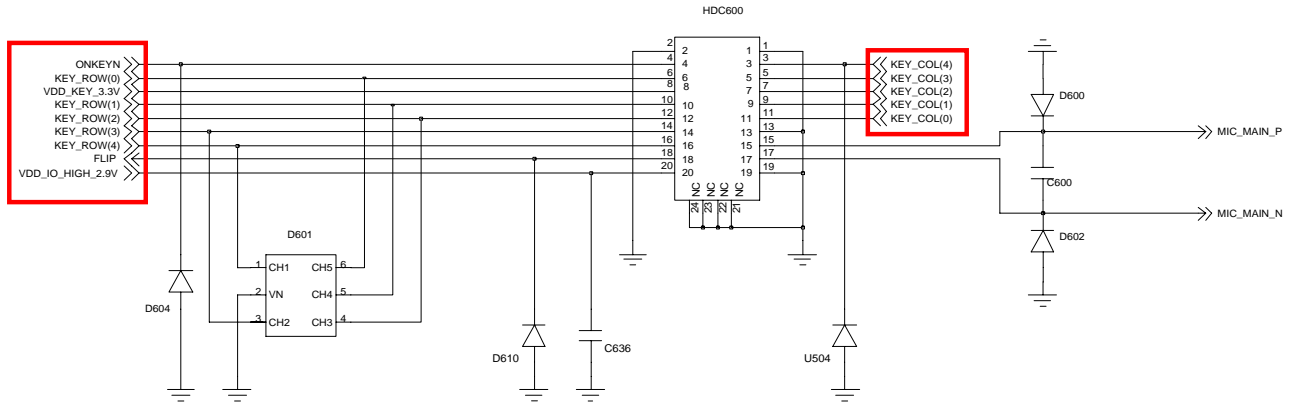


10-6. Speaker Part

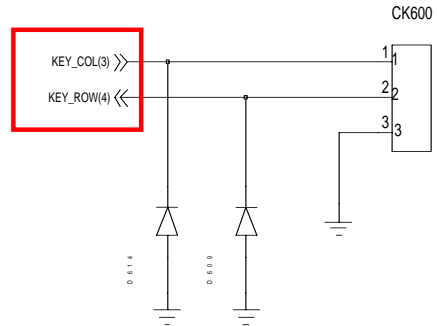
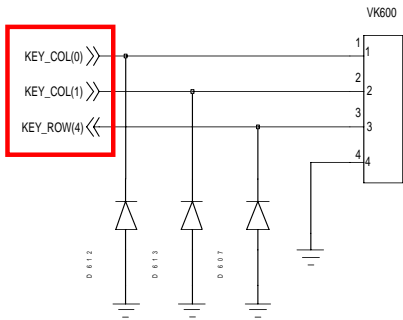


10-7. Key Data Input



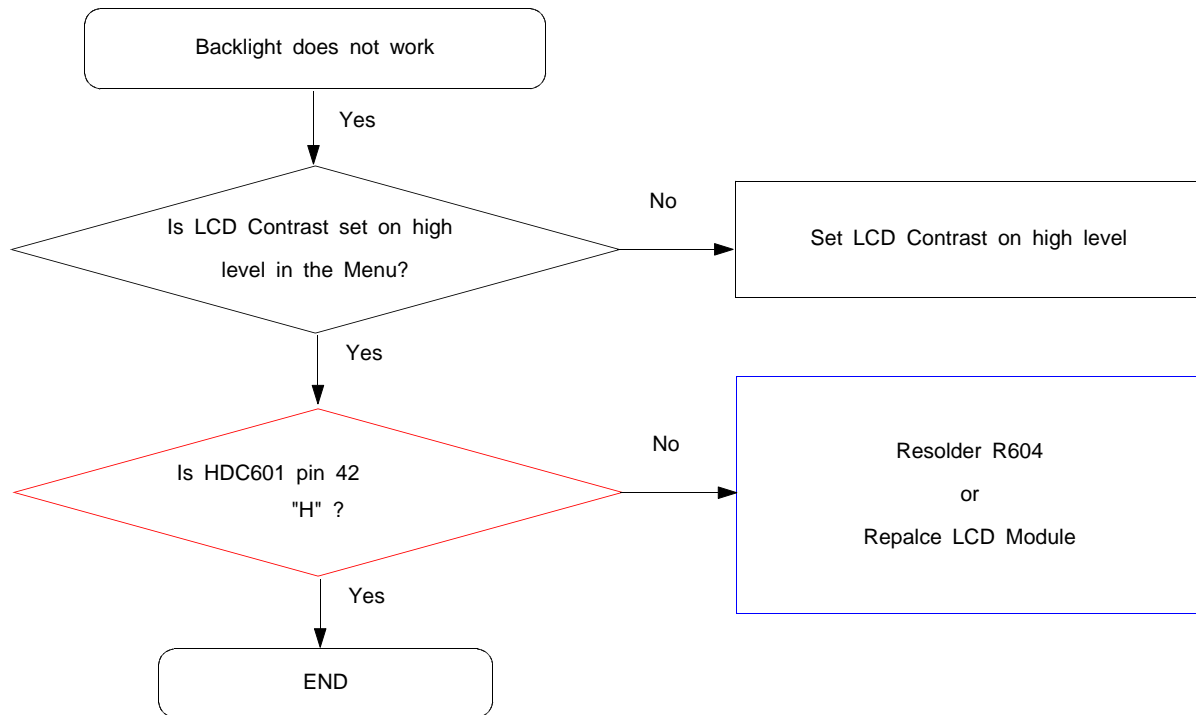


KEY PBA CON

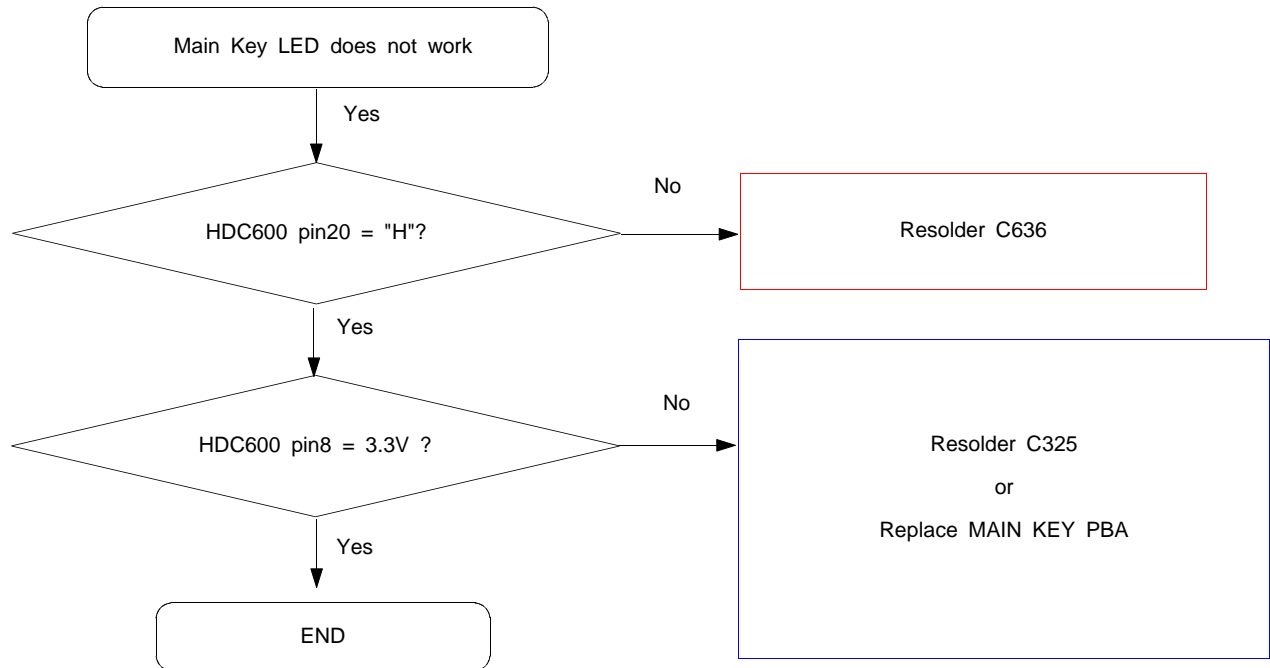


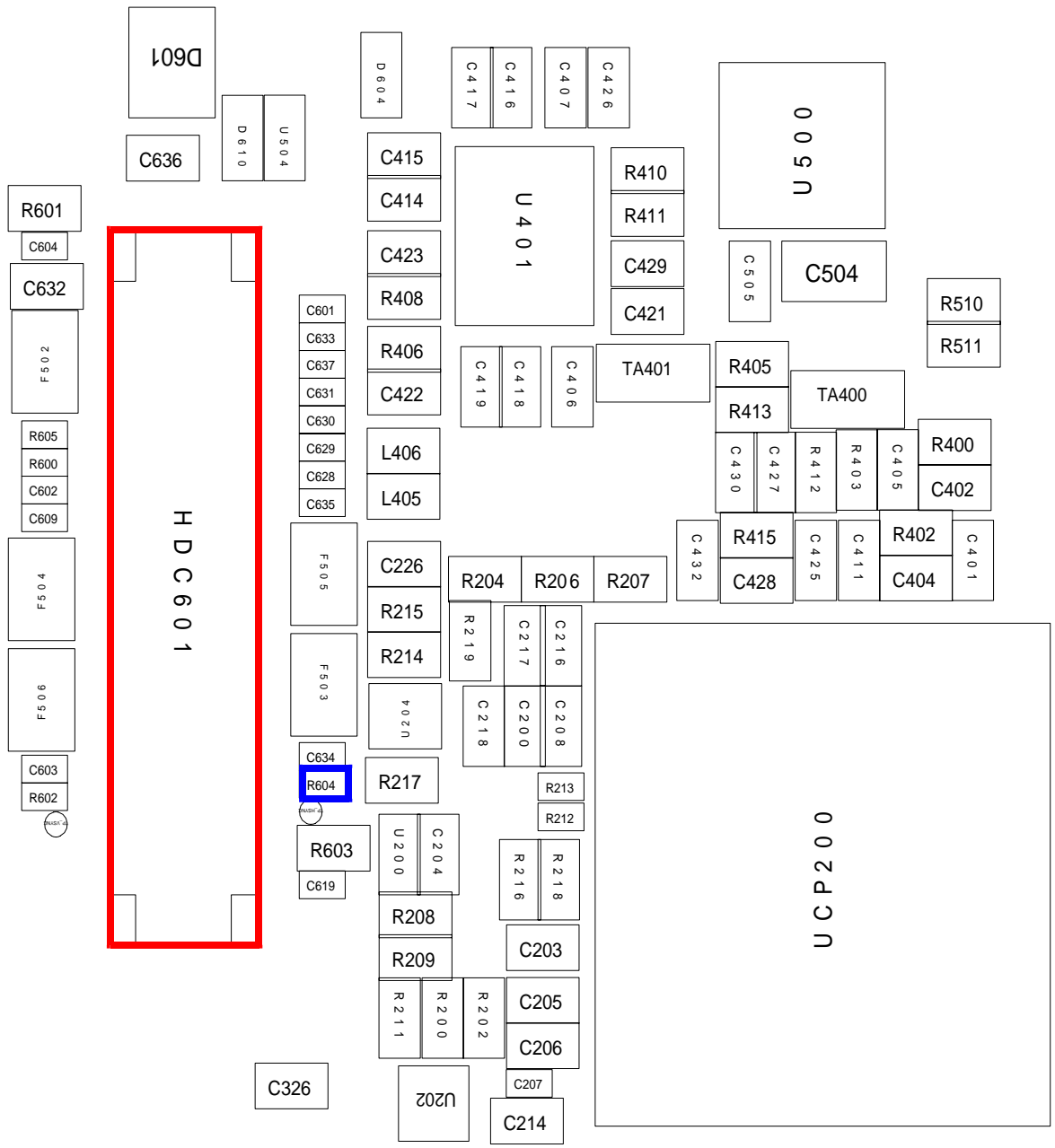
SIDE KEY & CAMERA KEY FPCB

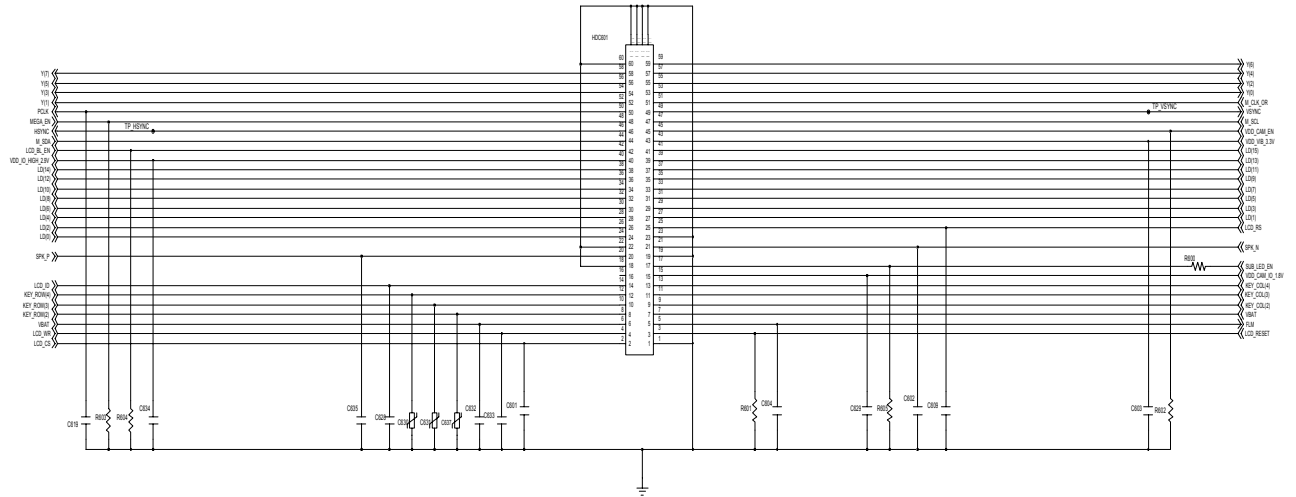
10-8. Back Light (for Color Main LCD)



10-9. Key Back Light

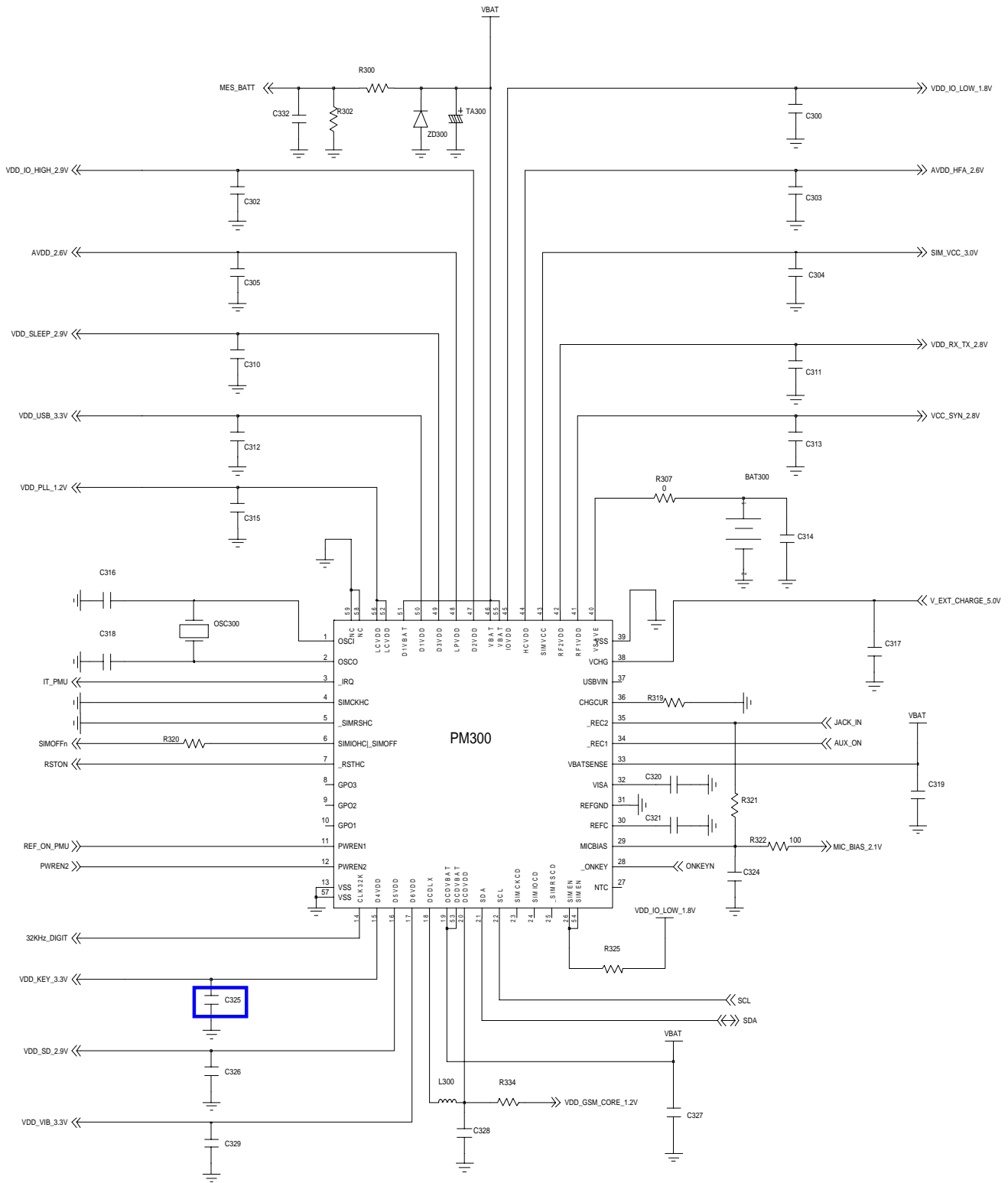




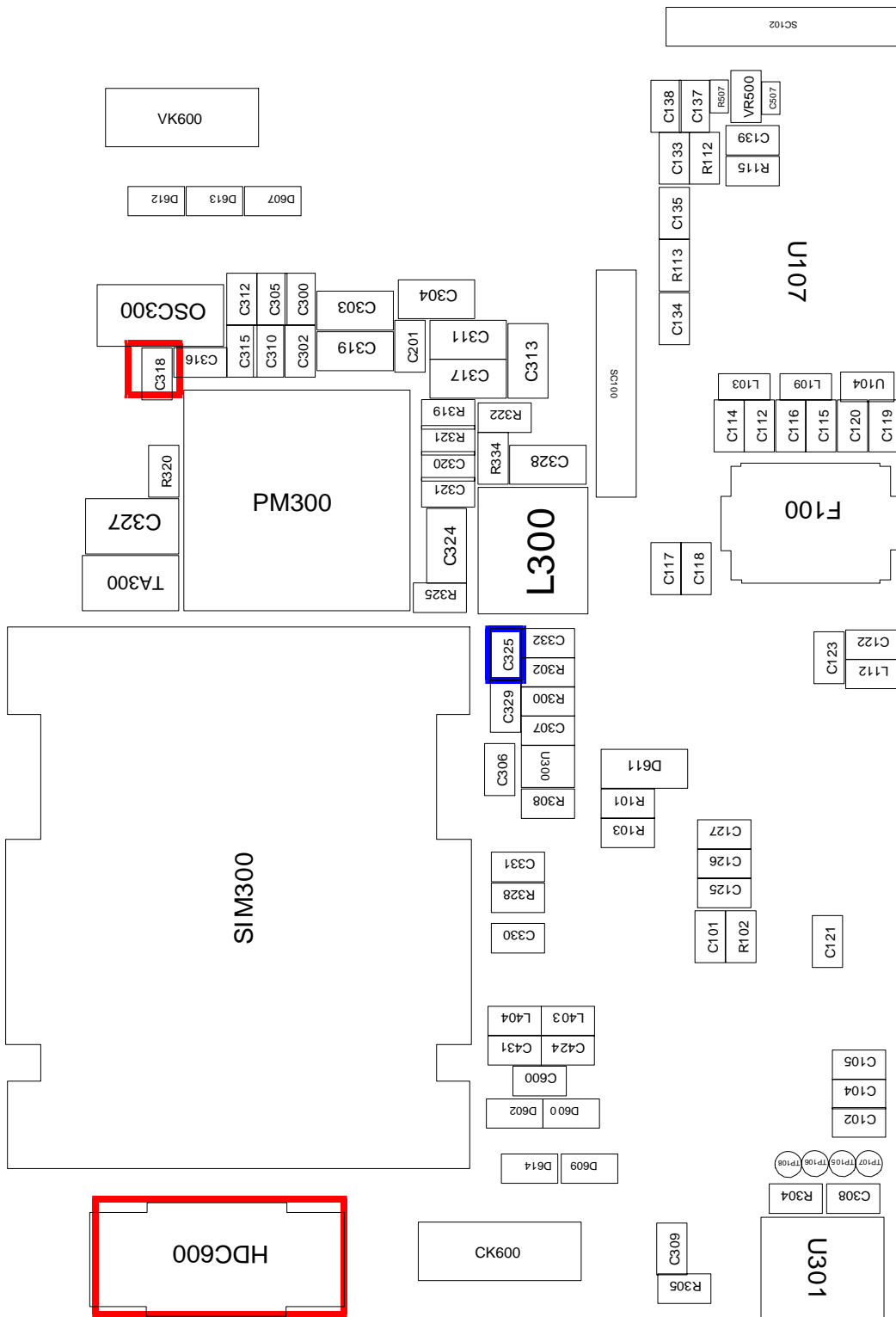


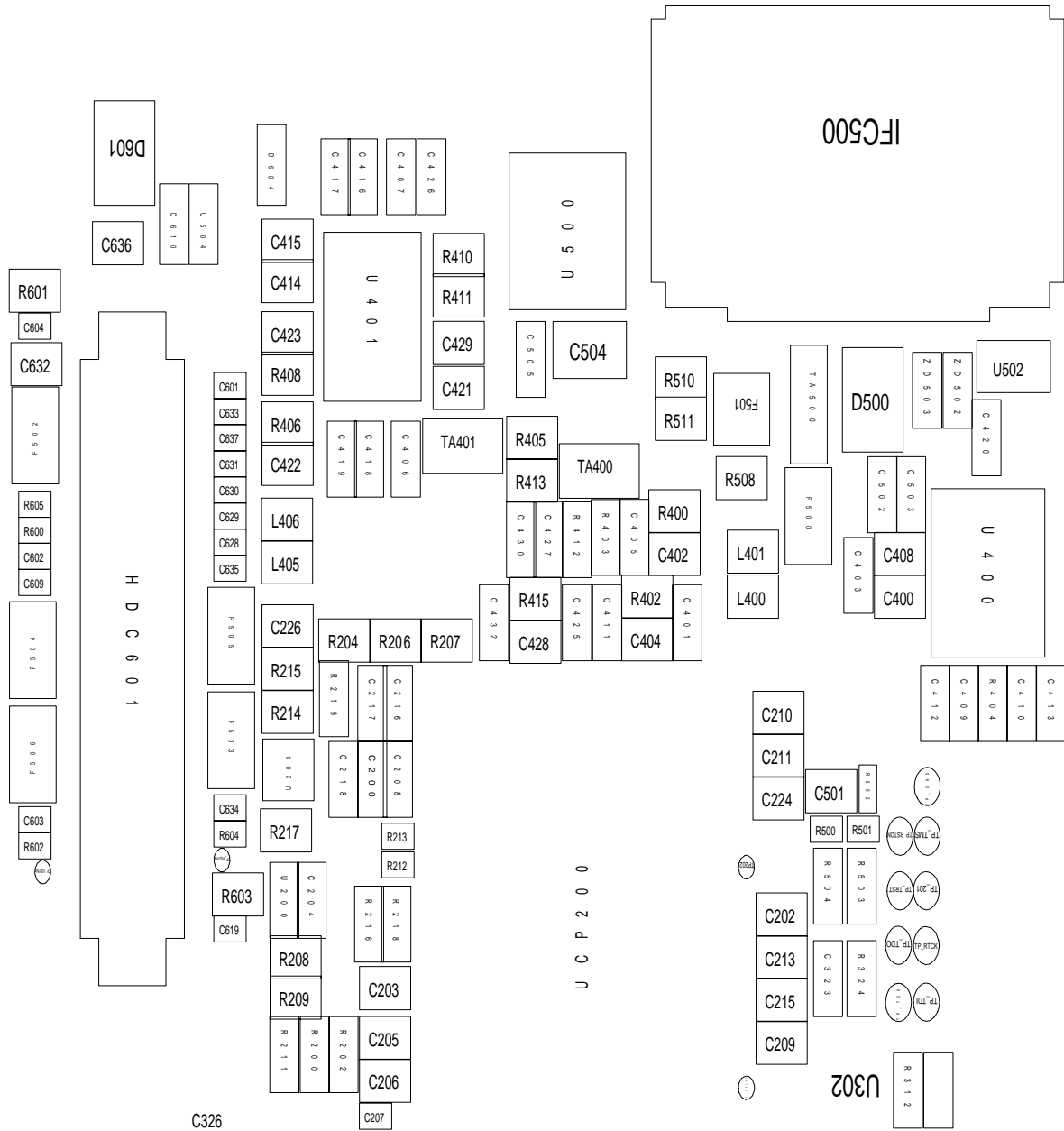
SUB BOARD CON

Flow Chart of Troubleshooting

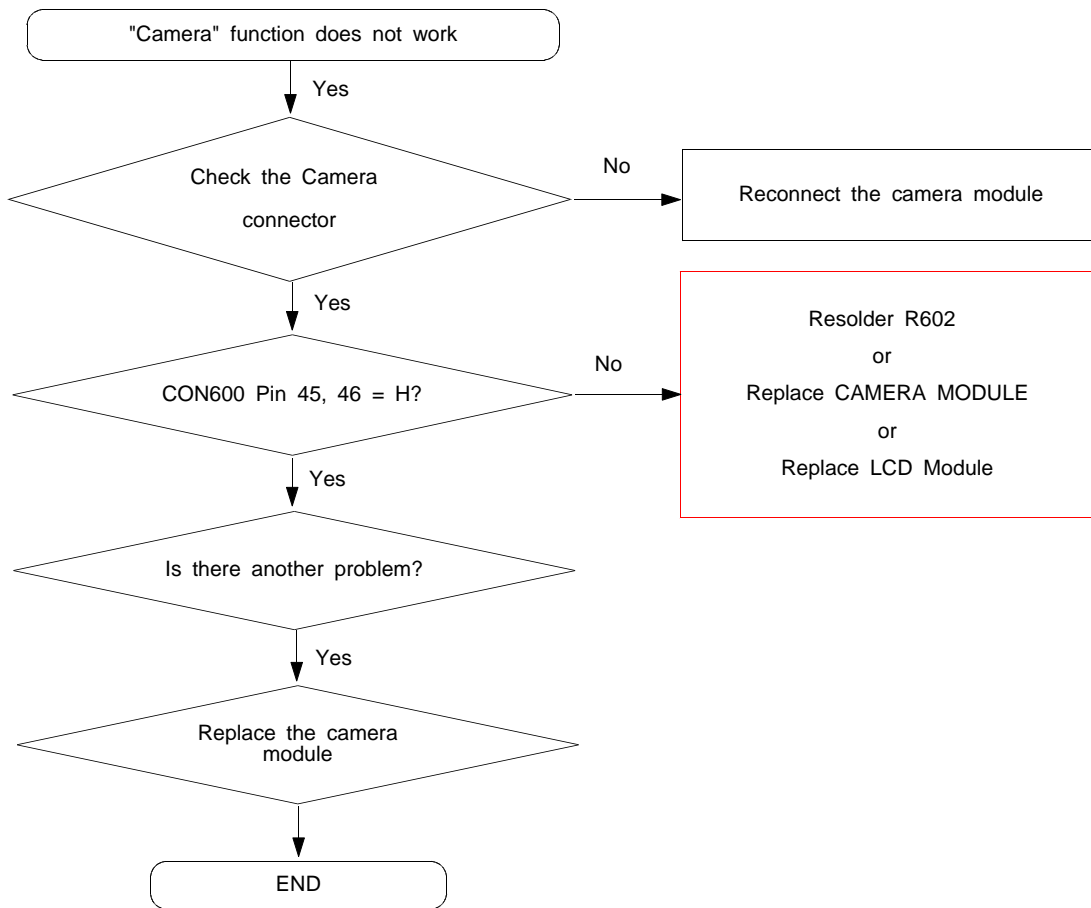


PMU

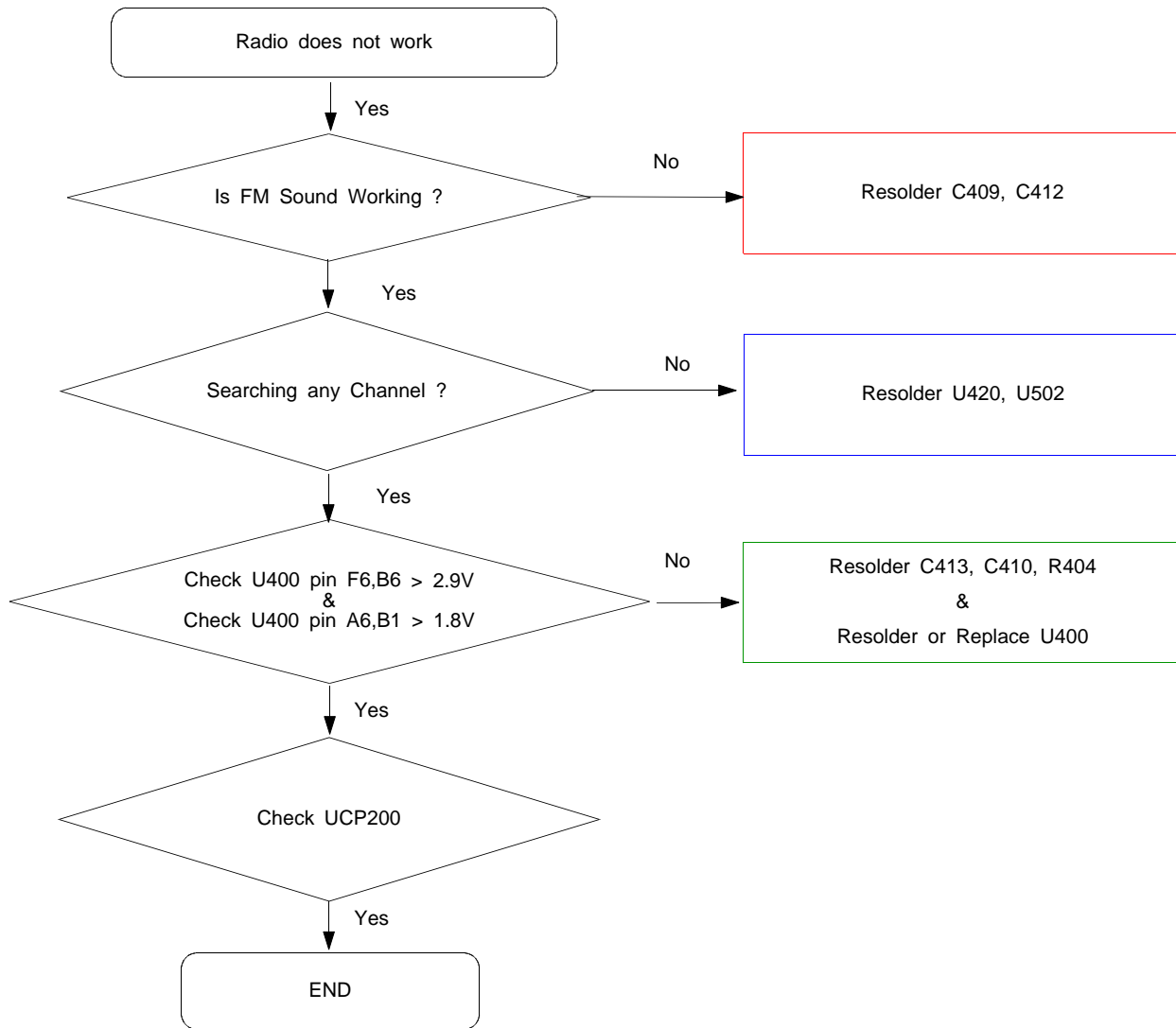




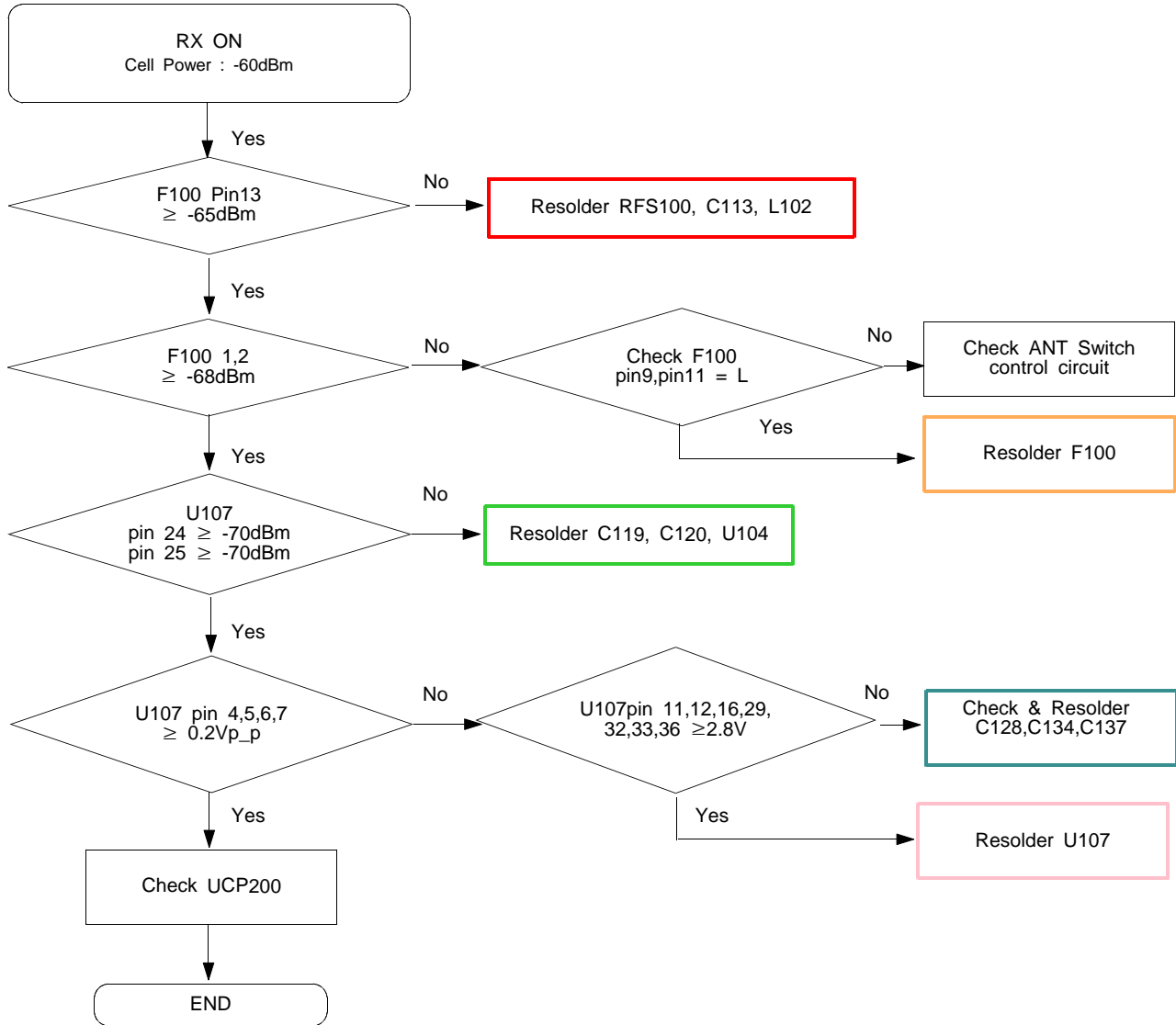
10-10. Camera part



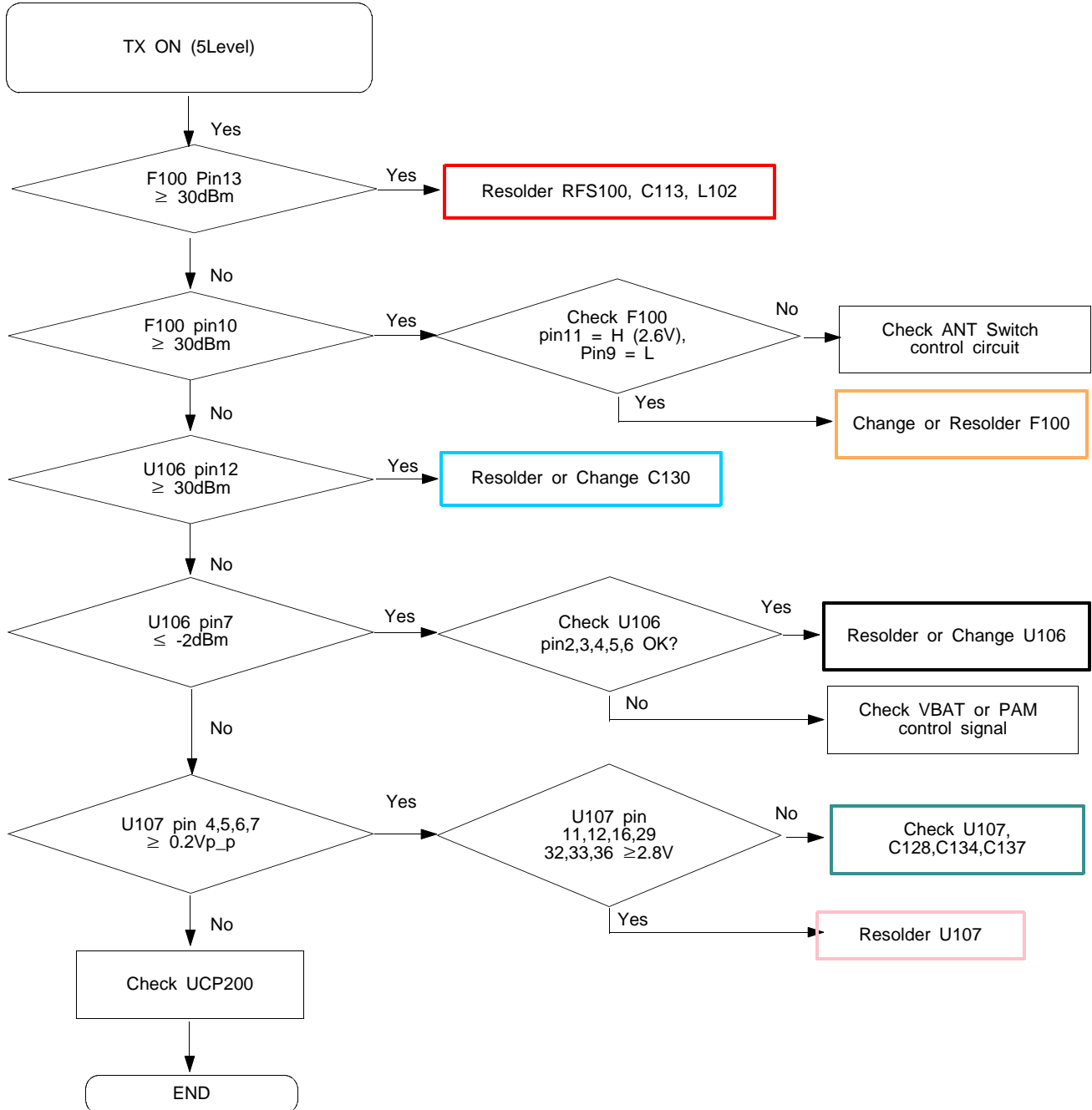
10-11. Radio Part



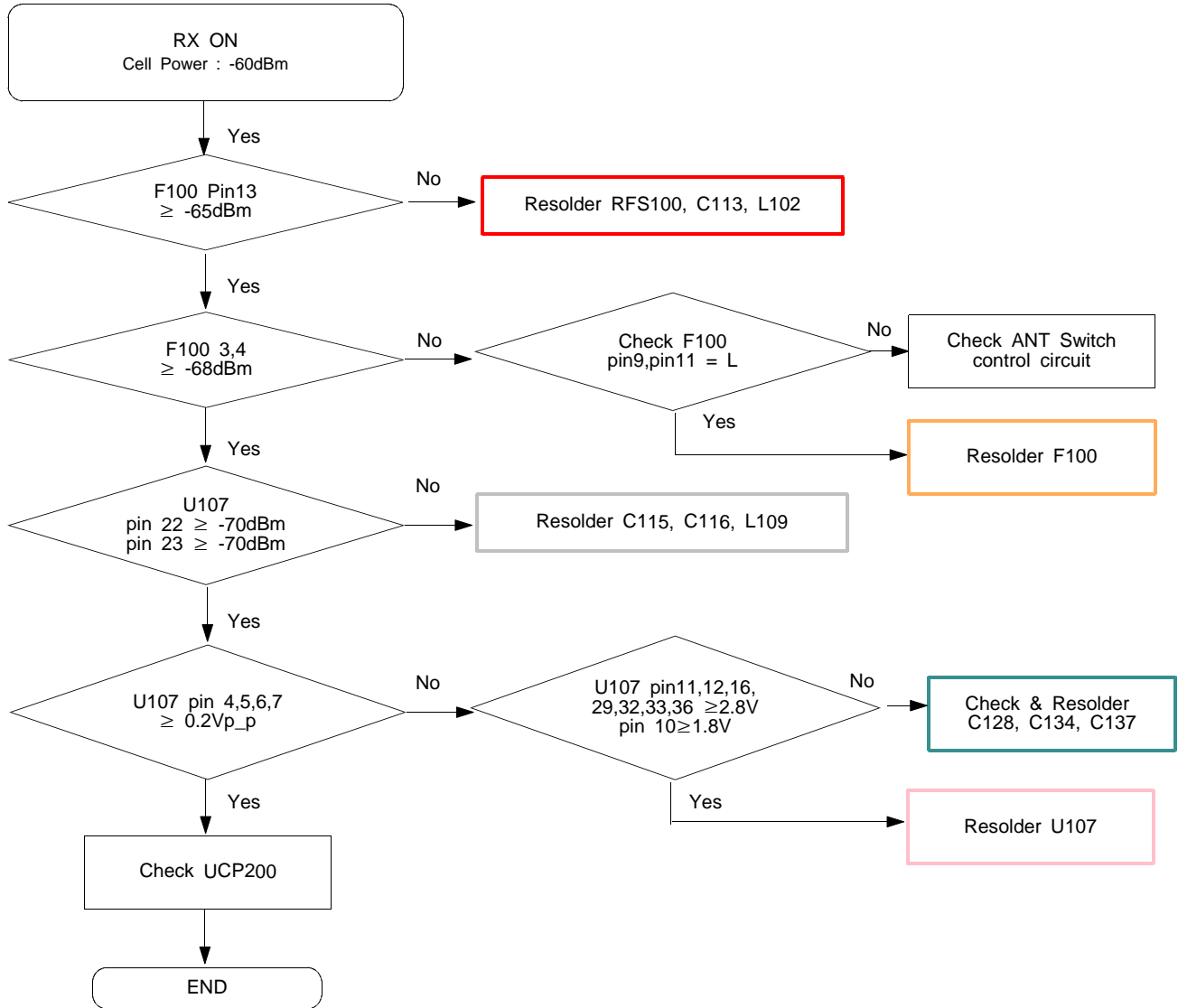
10-12. GSM Receiver



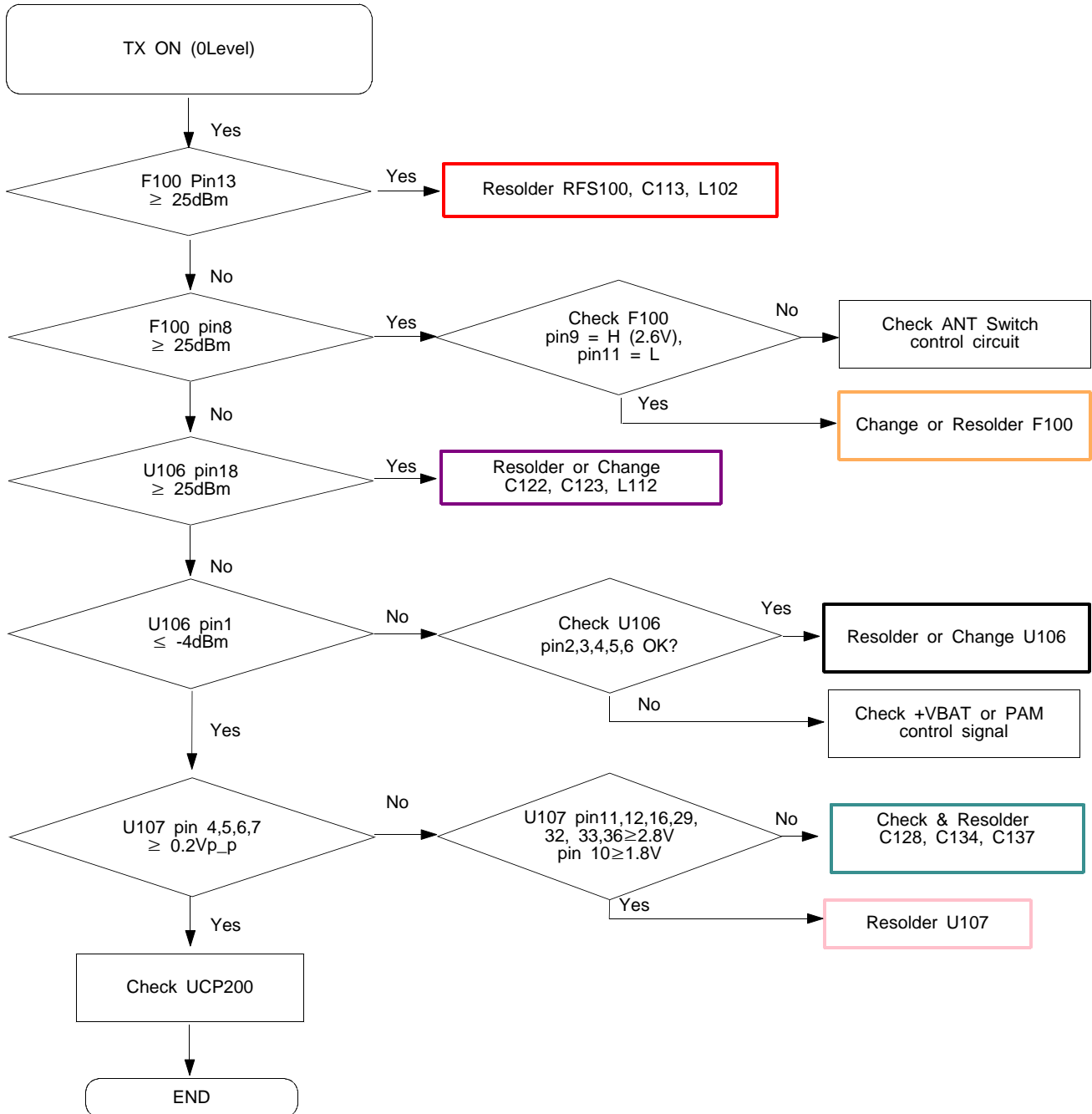
10-13. GSM Transmitter



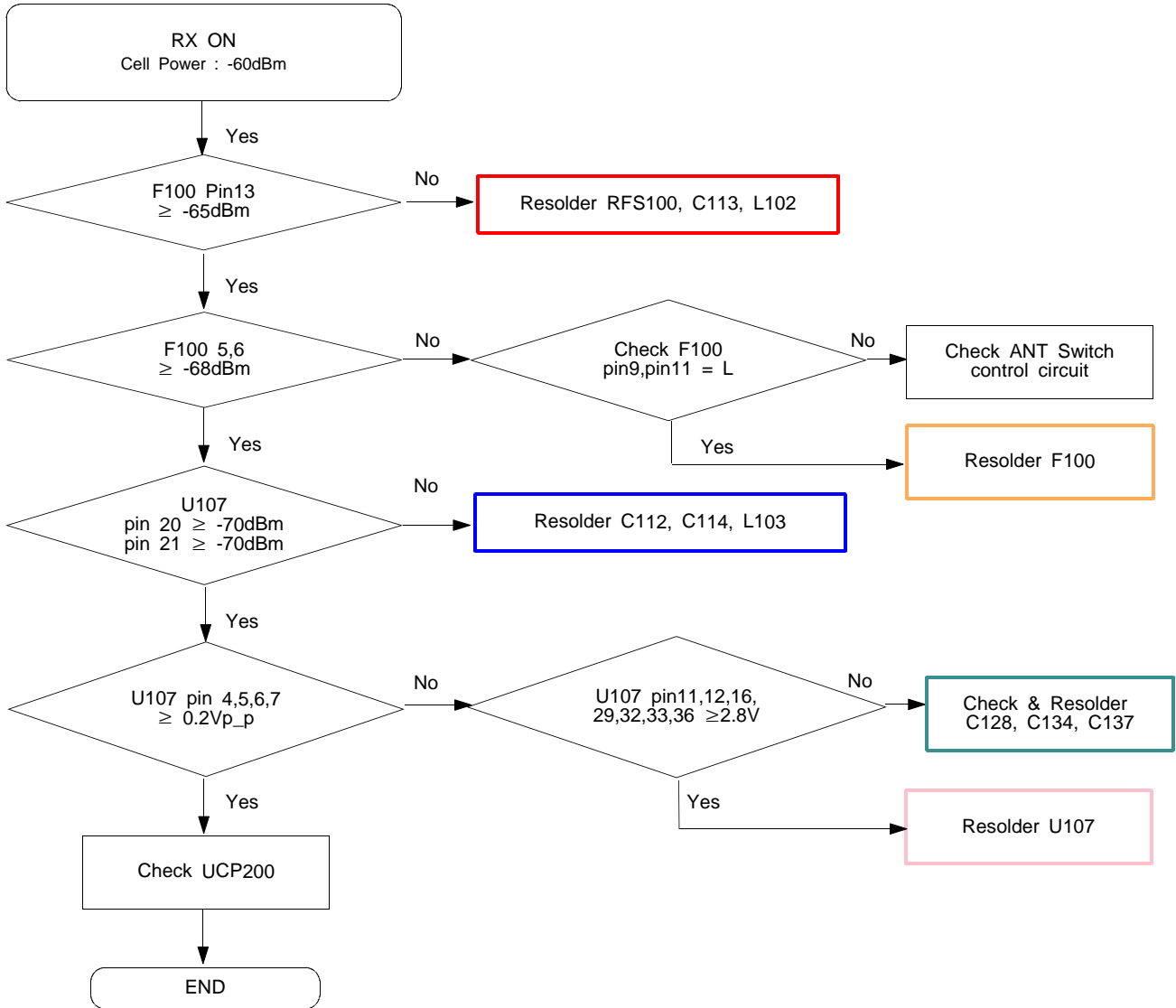
10-14. DCS Receiver



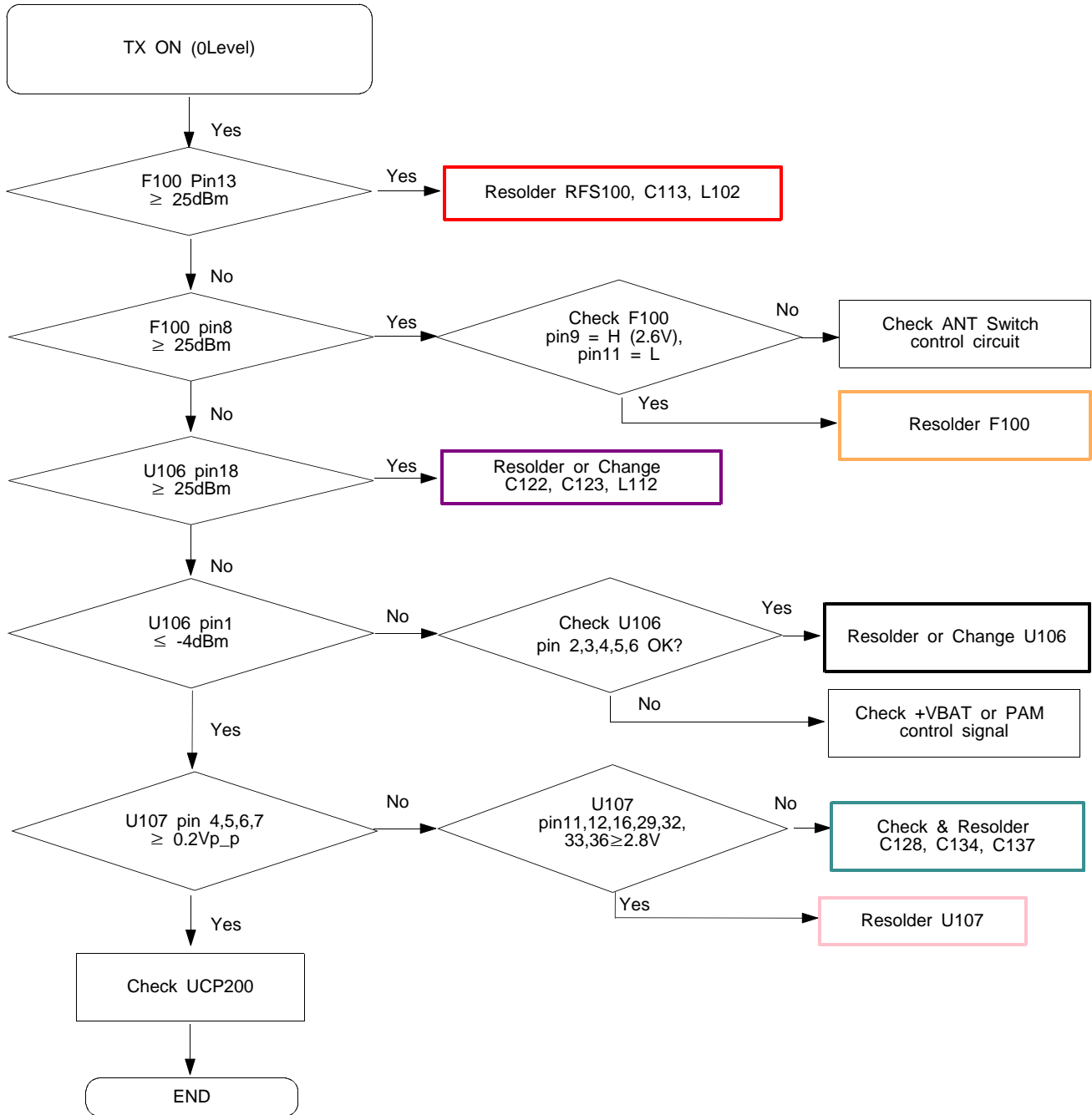
10-15. DCS Transmitter

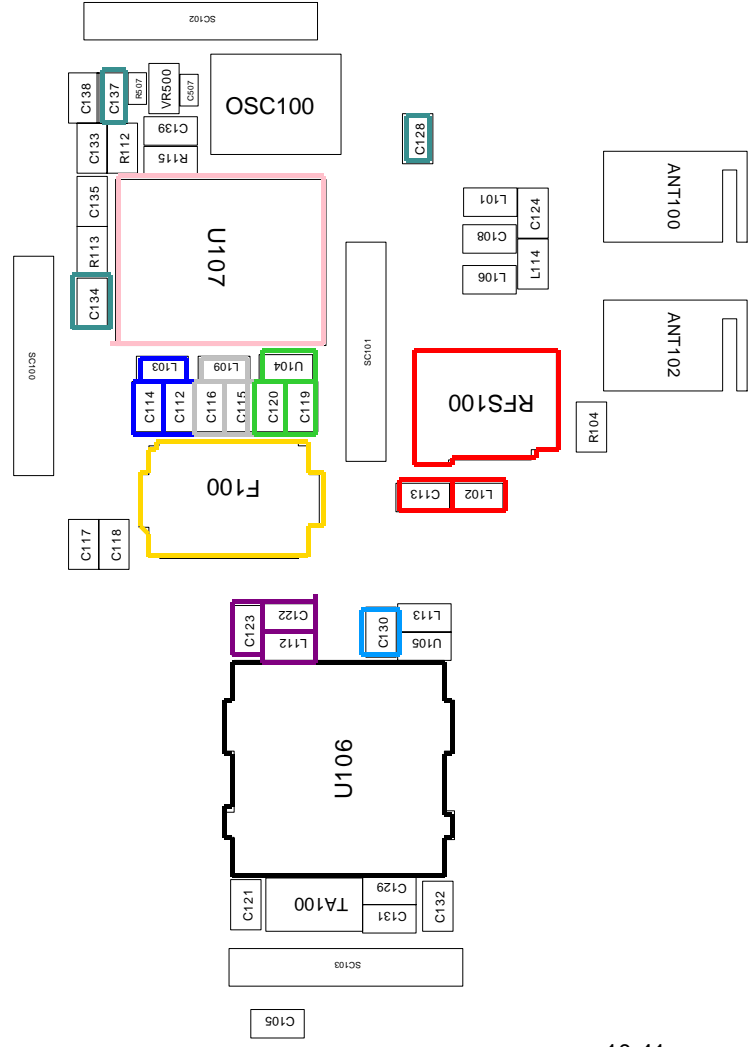
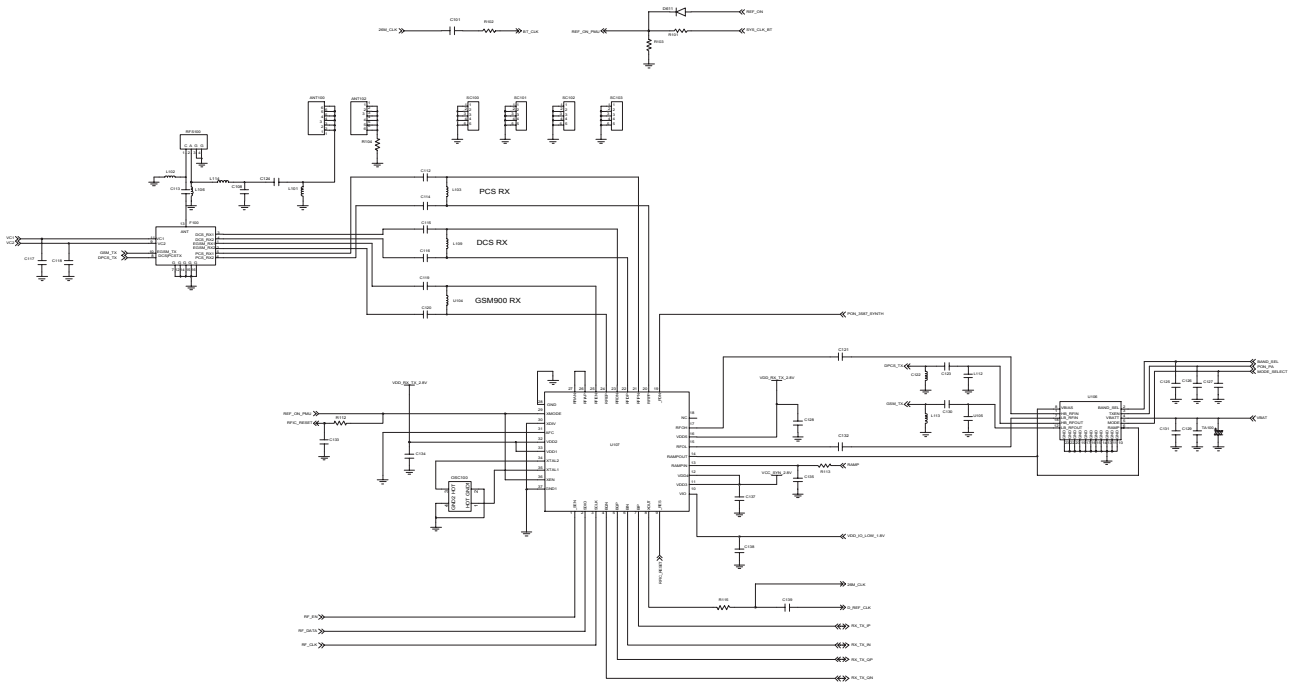


10-16. PCS Receiver



10-17. PCS Transmitter





10-18. Bluetooth part

