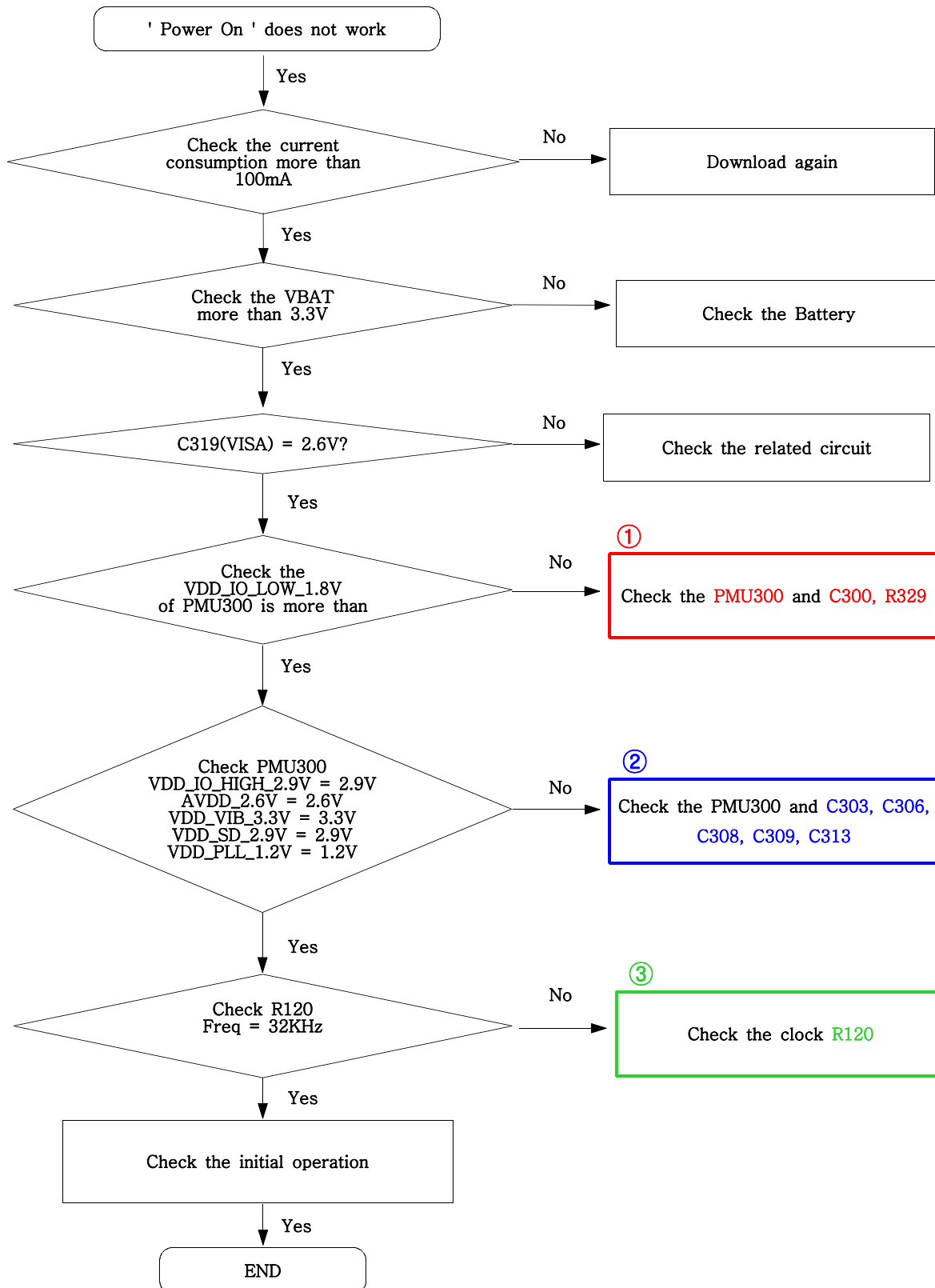
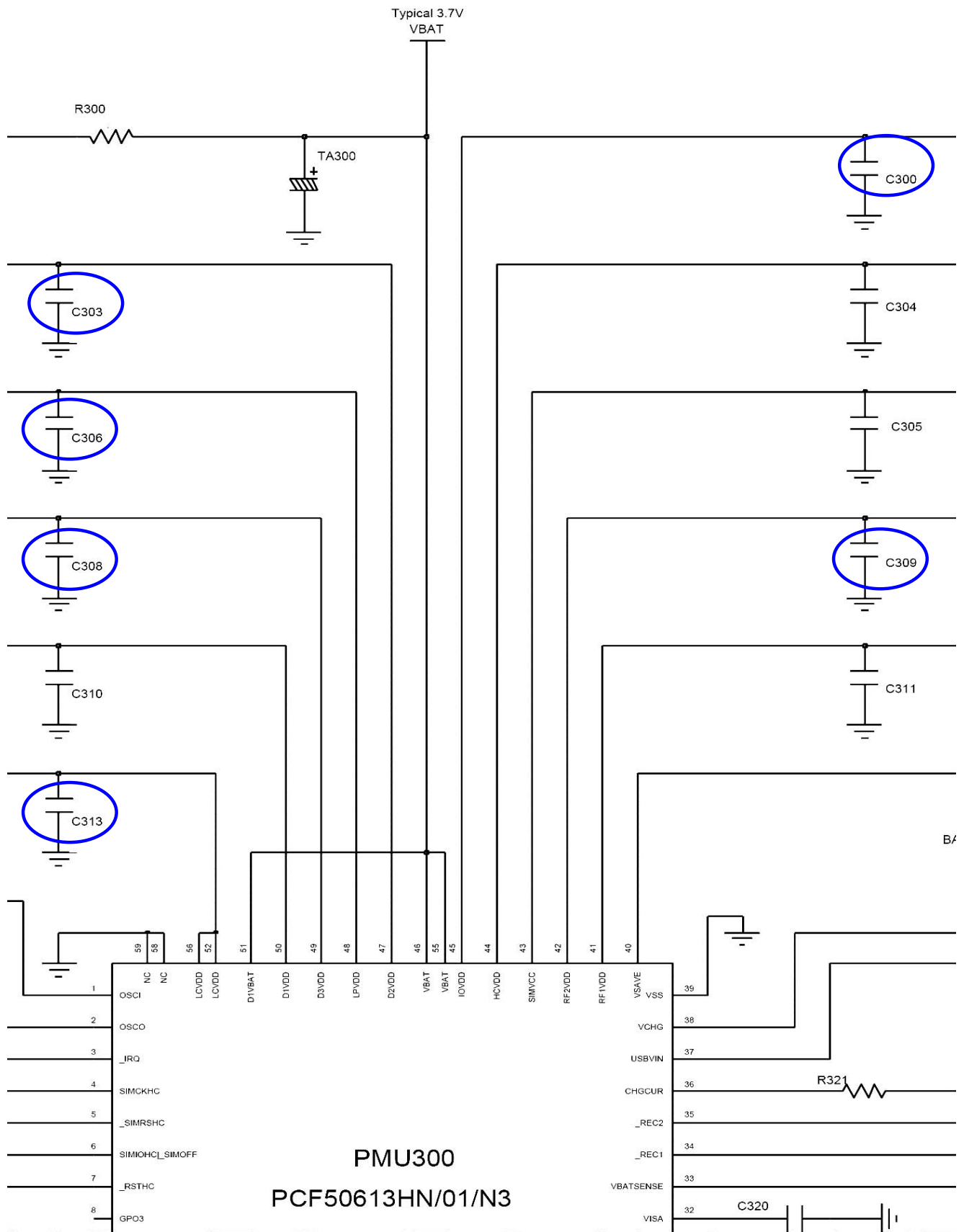


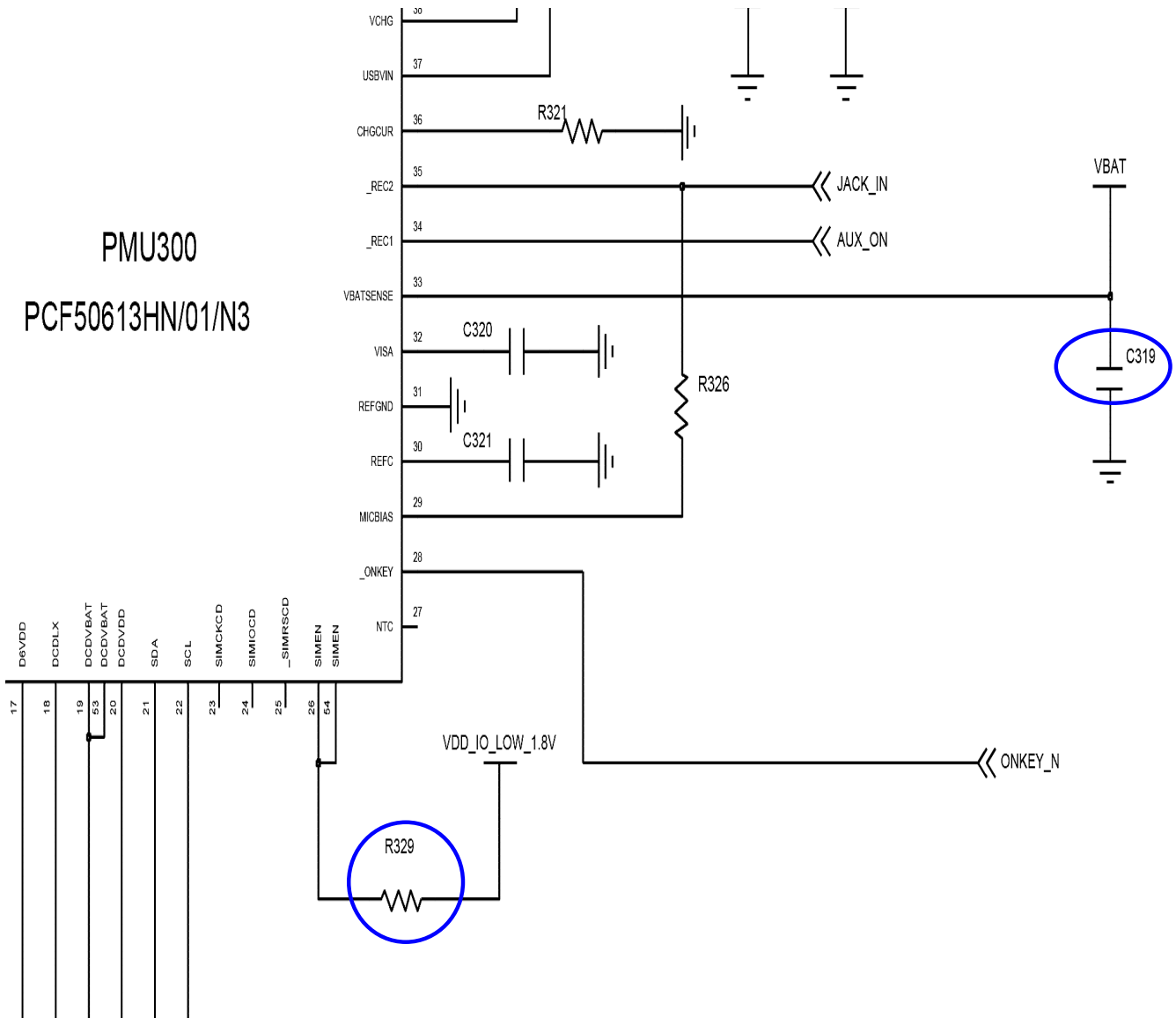
# 9. Flow Chart of Troubleshooting

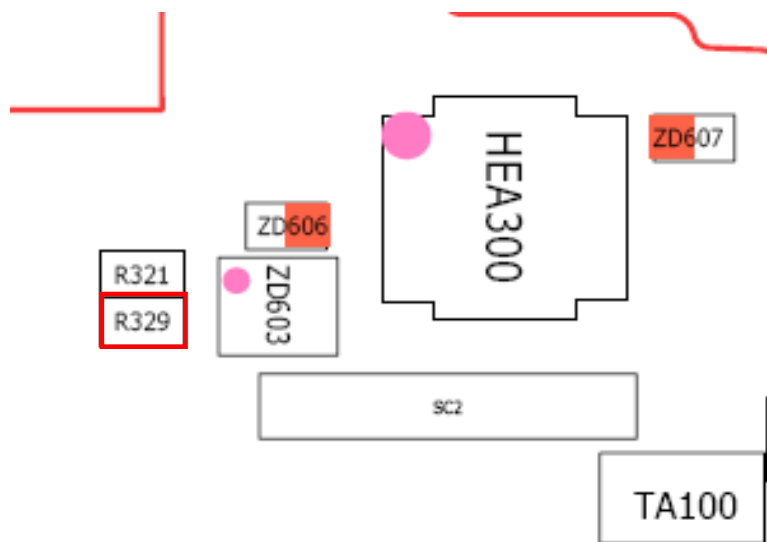
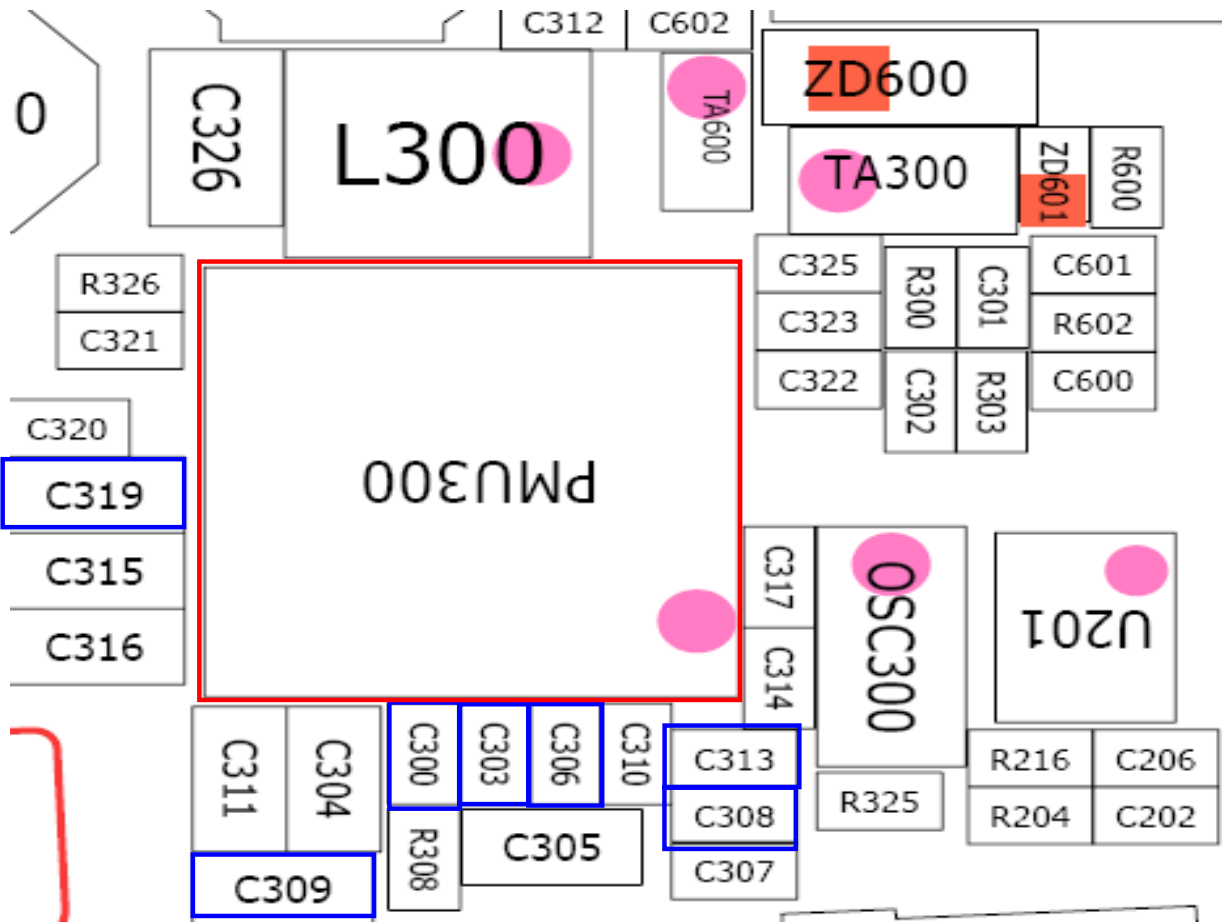
## 9-1. Power On



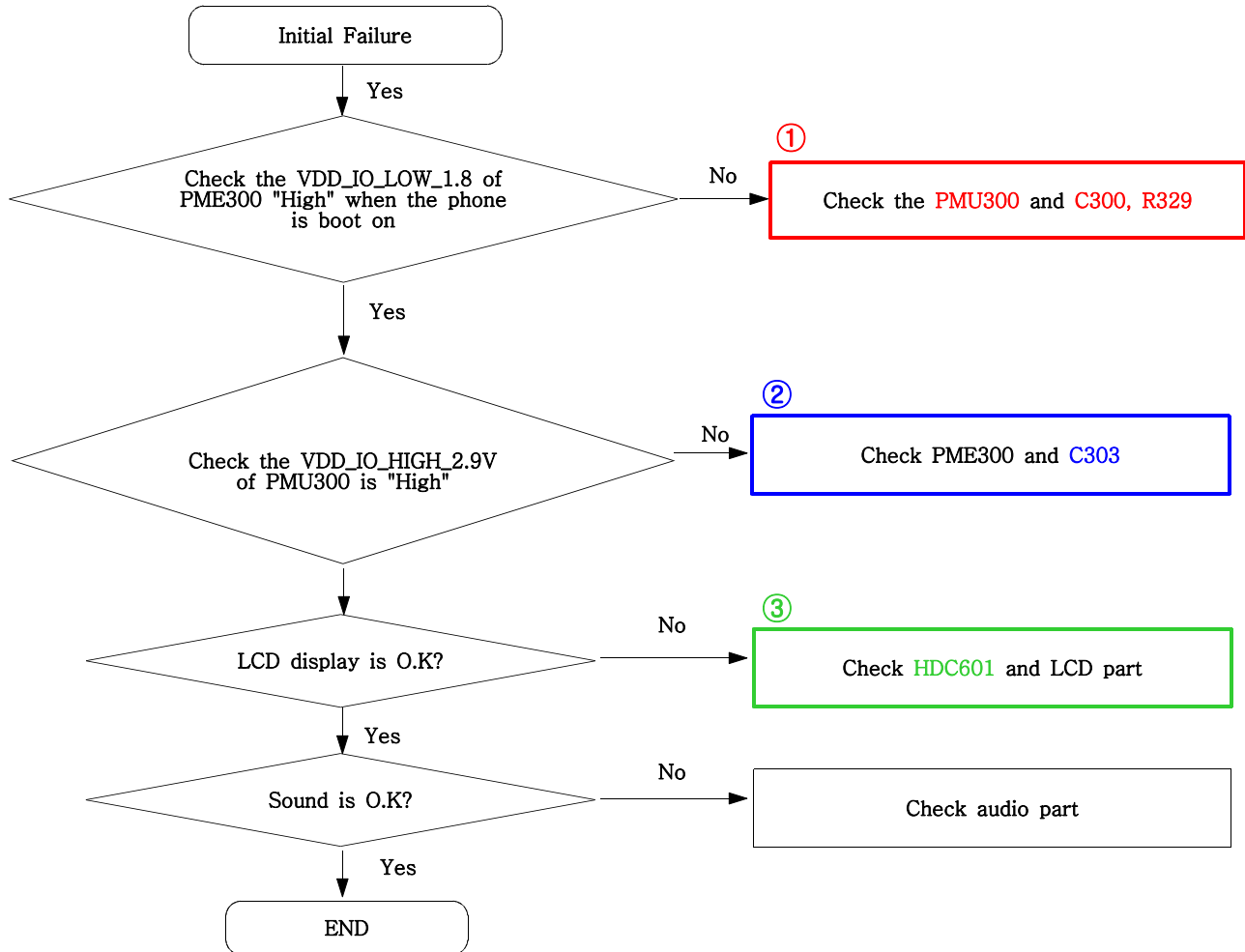
# Flow Chart of Troubleshooting



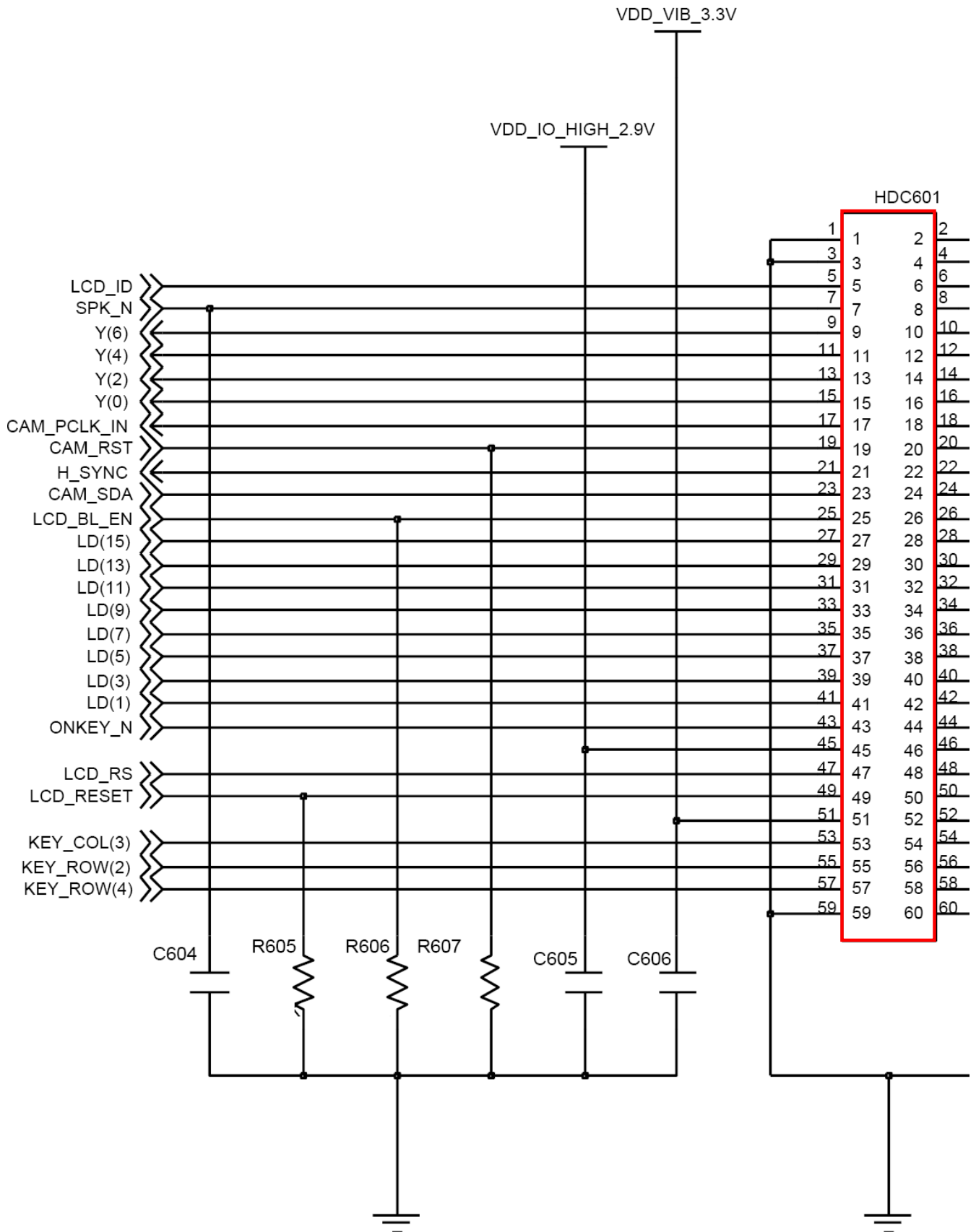


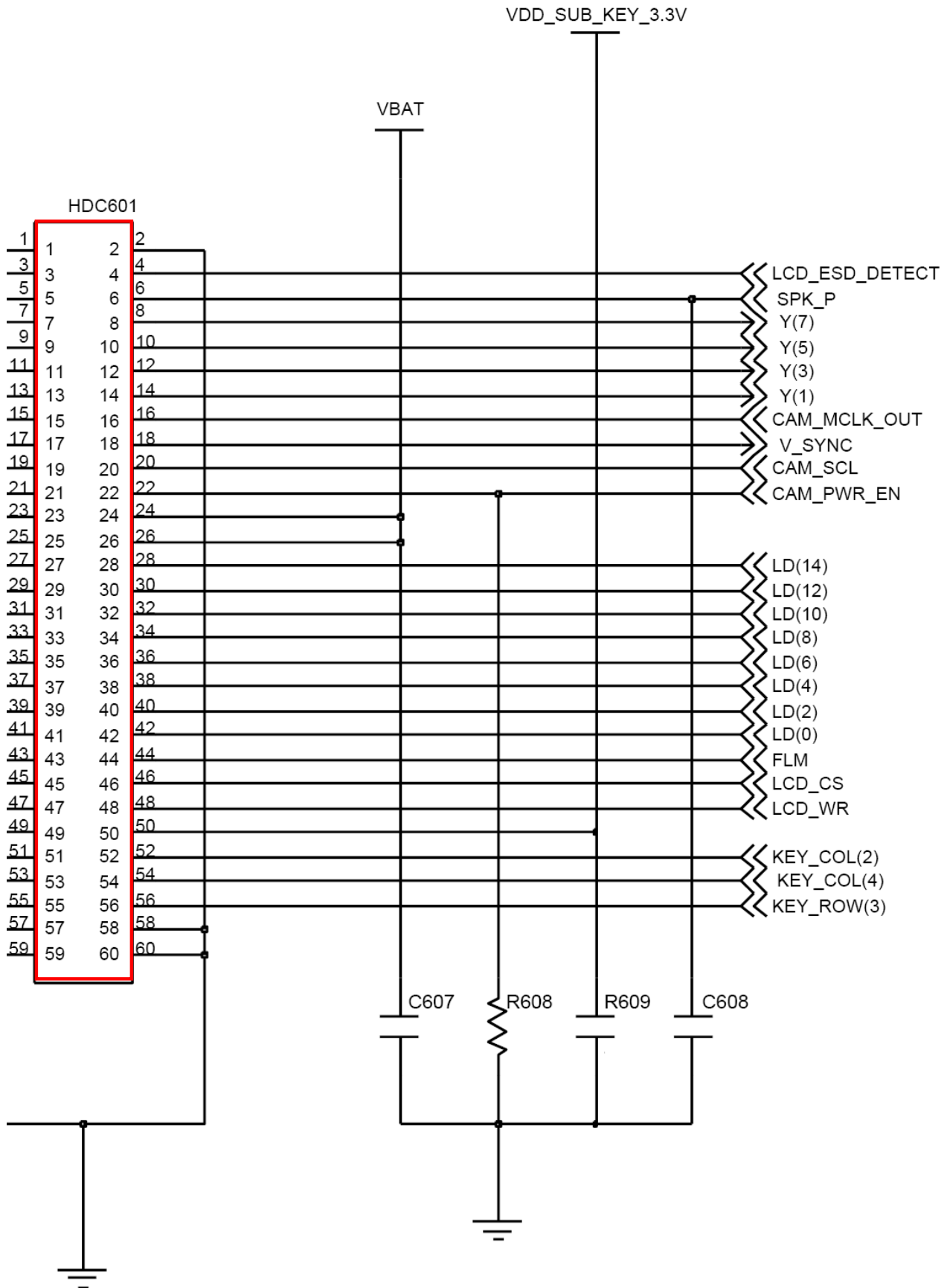


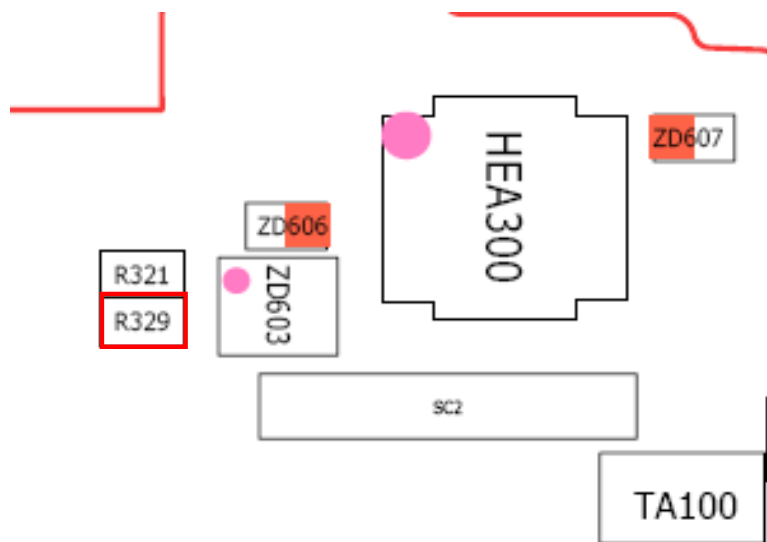
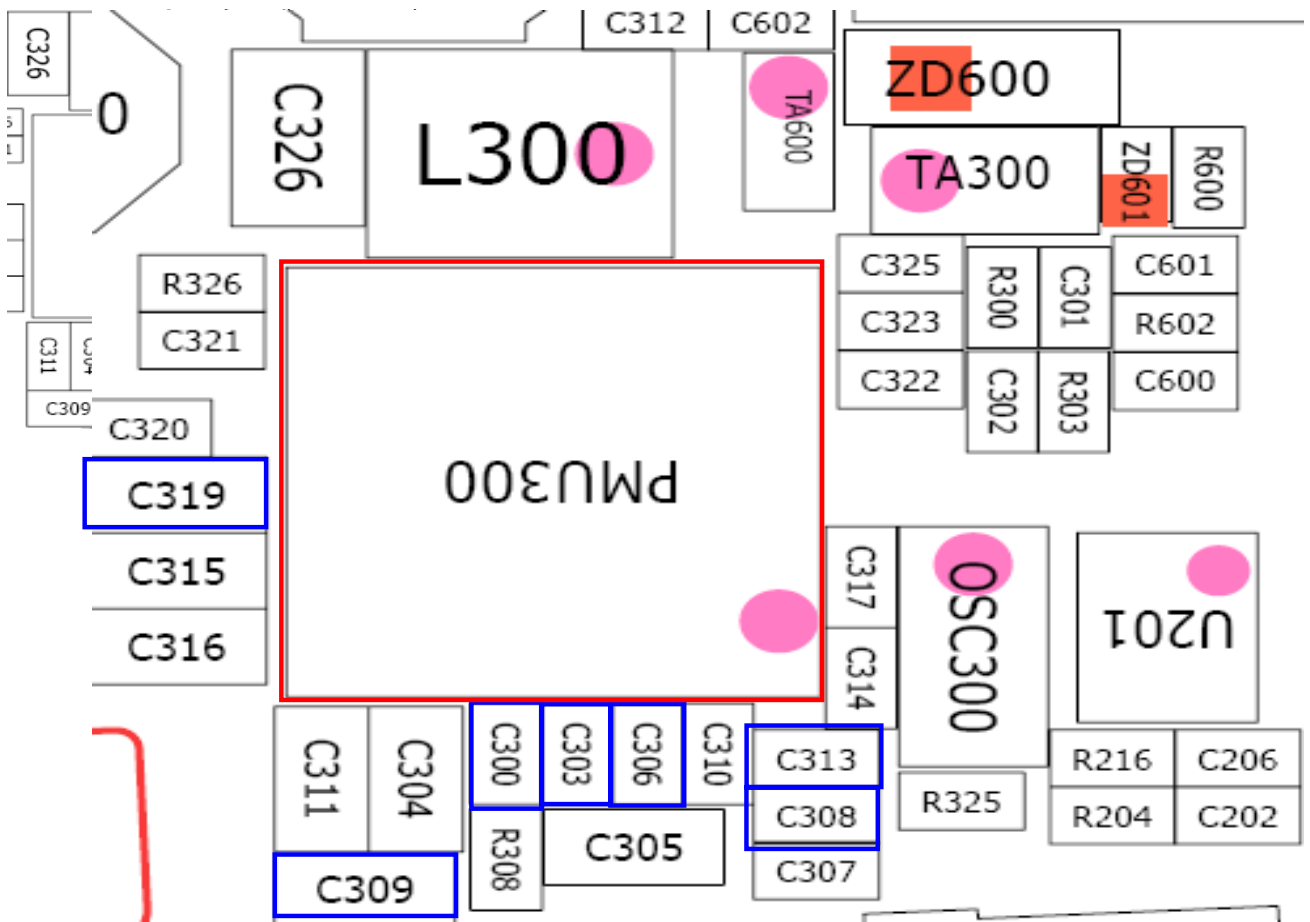
9-2. Initial



Flow Chart of Troubleshooting

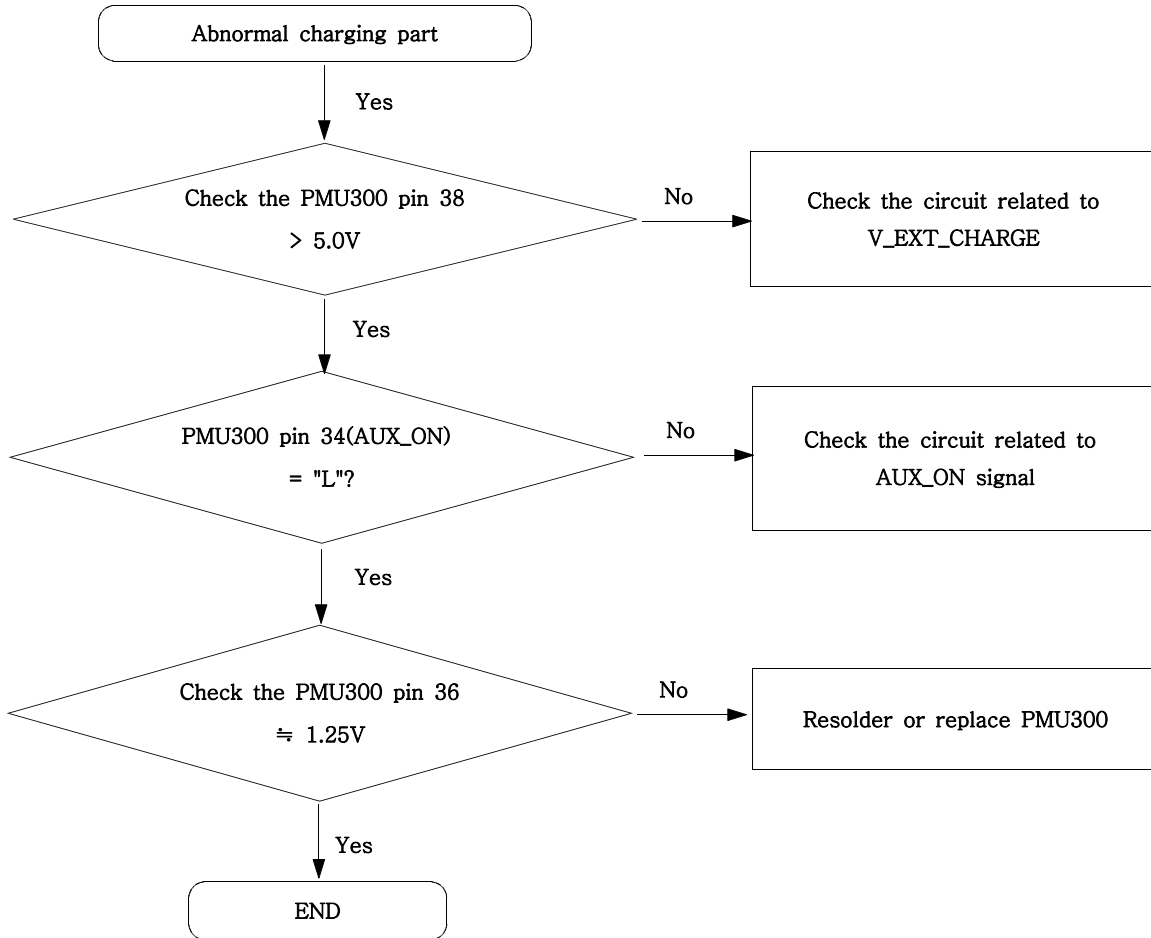




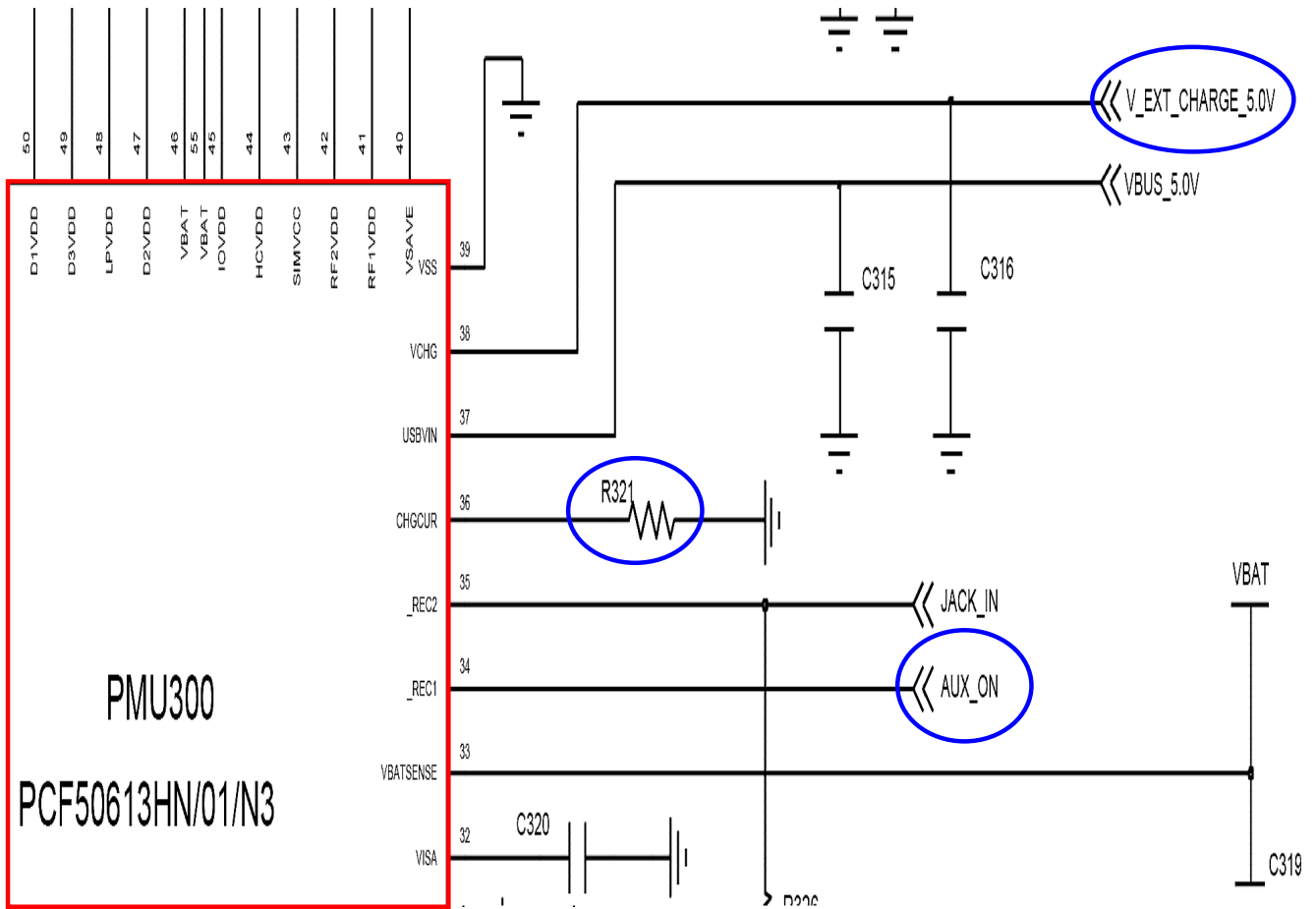




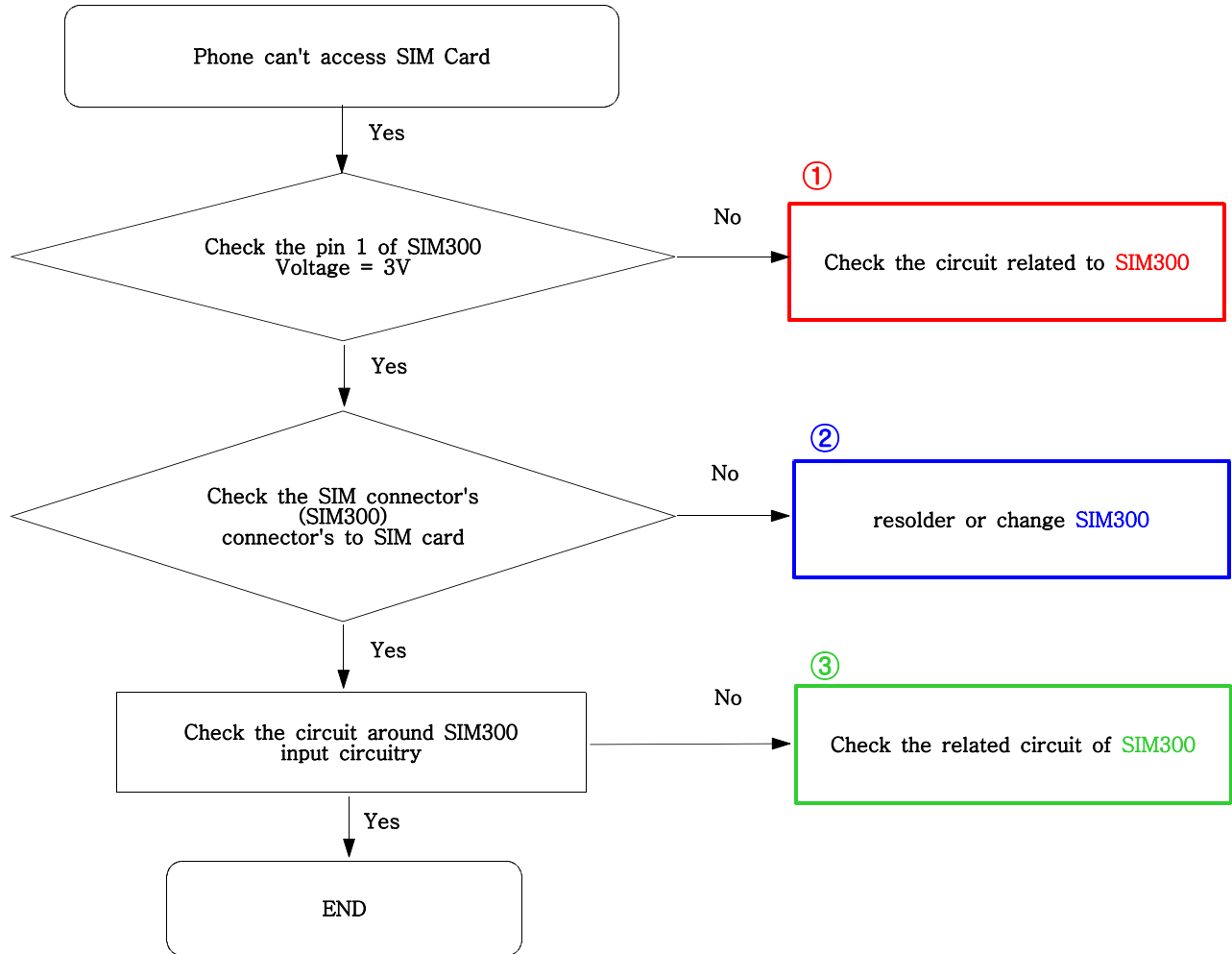
### 9-3. Charging Part

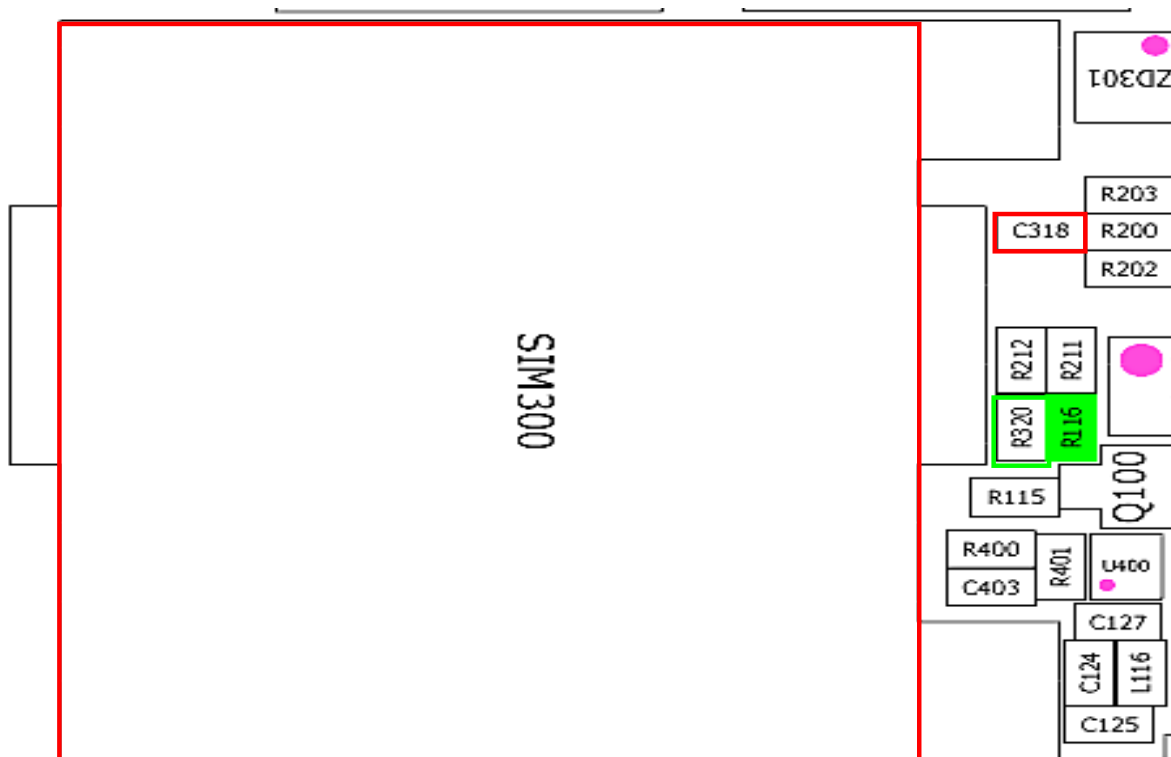
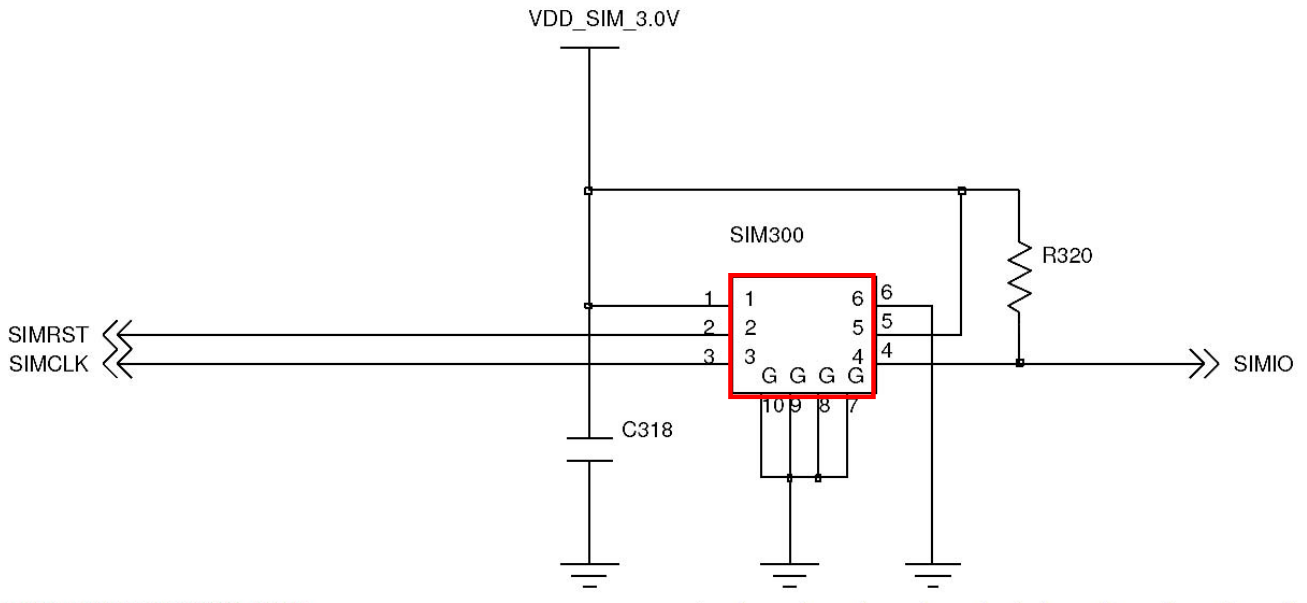


Flow Chart of Troubleshooting

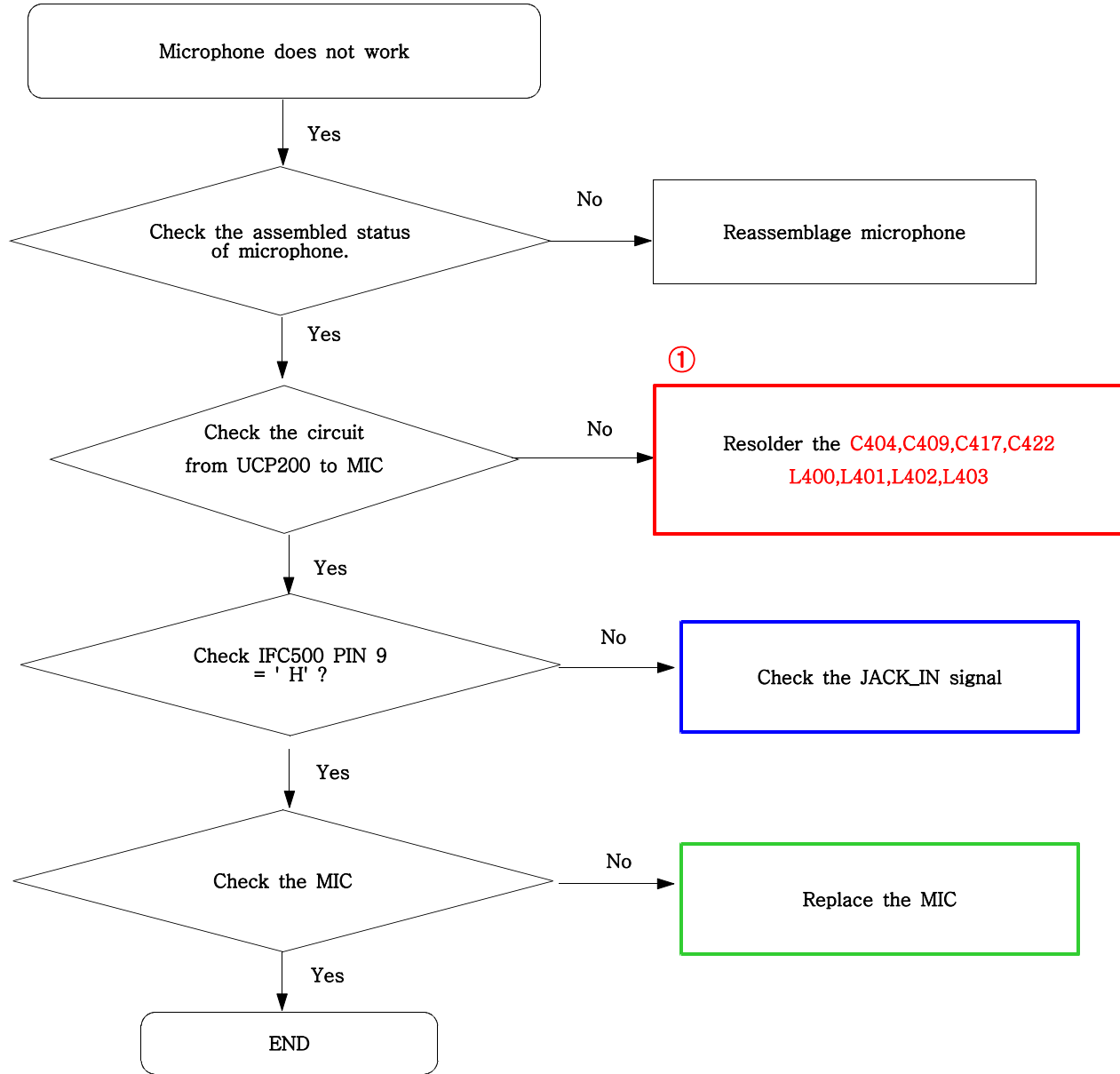


9-4. Sim Part

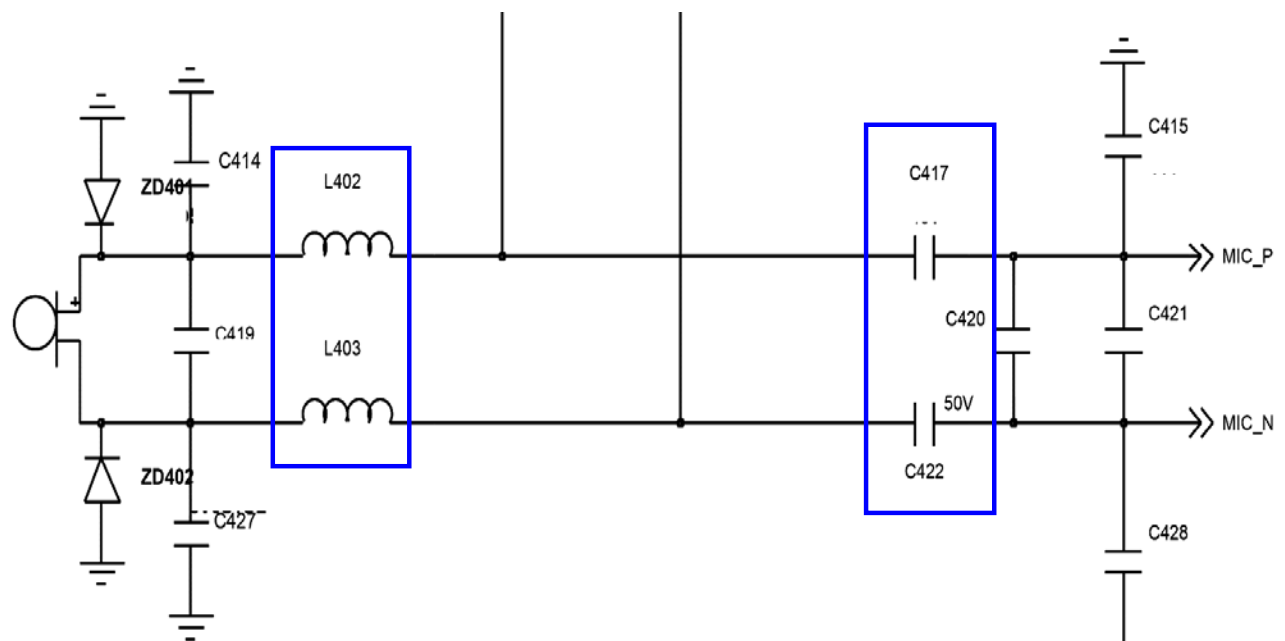
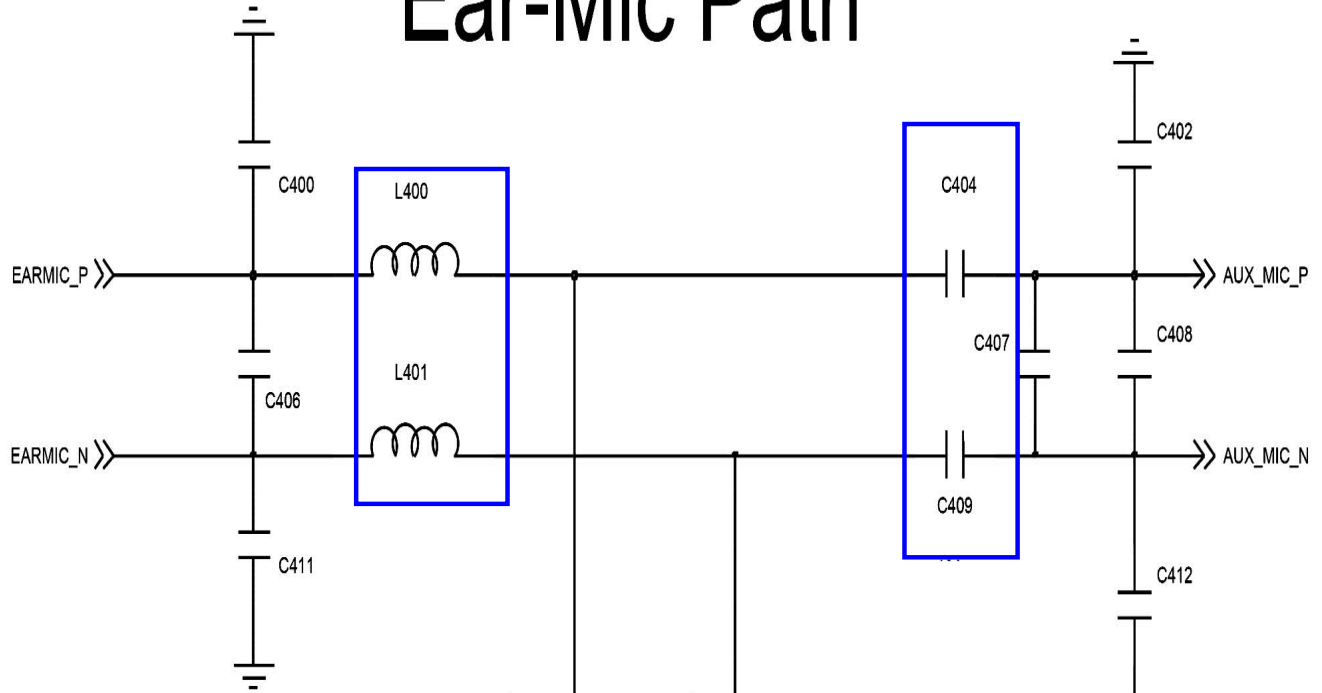




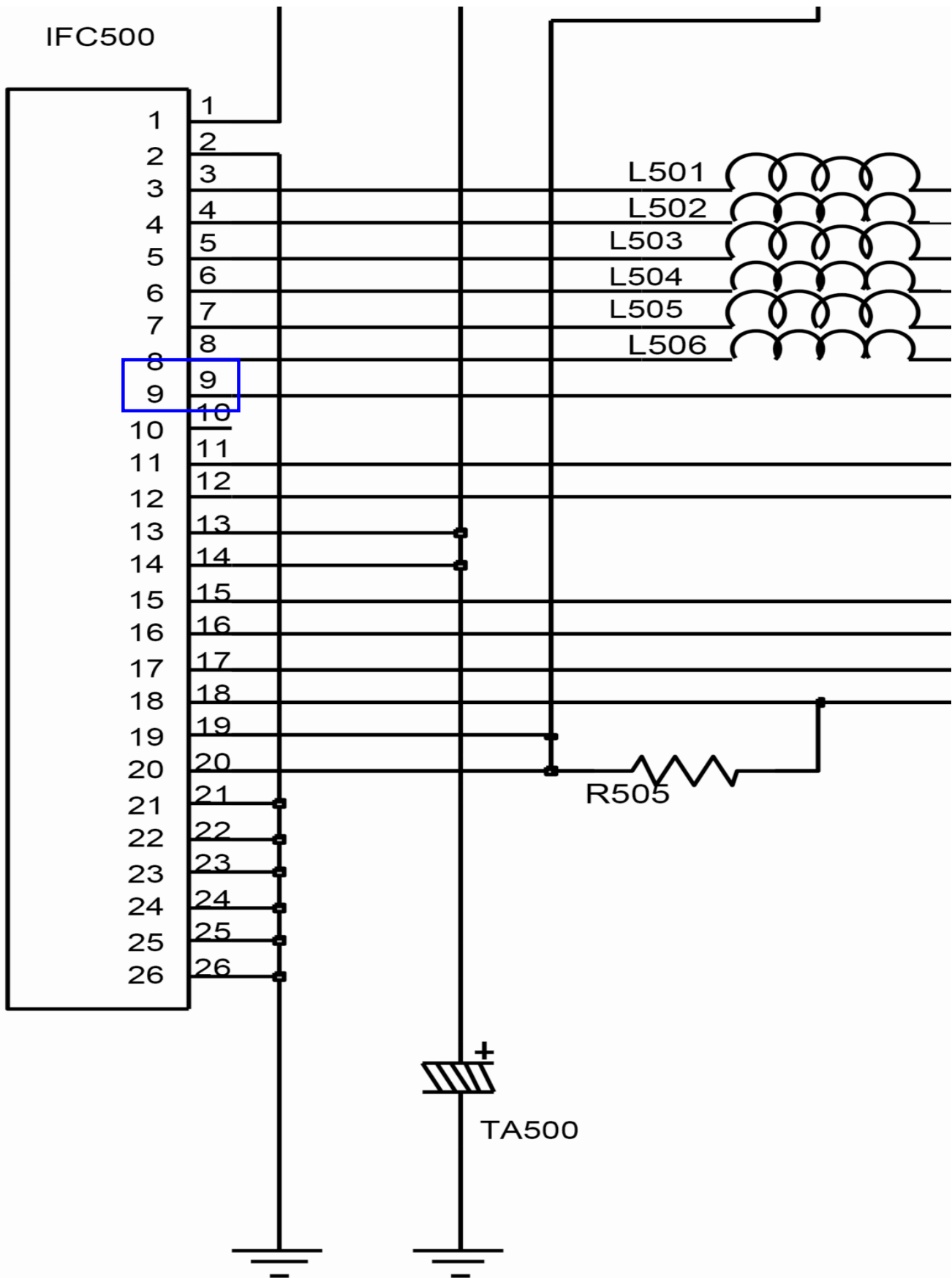
9-5. Microphone Part

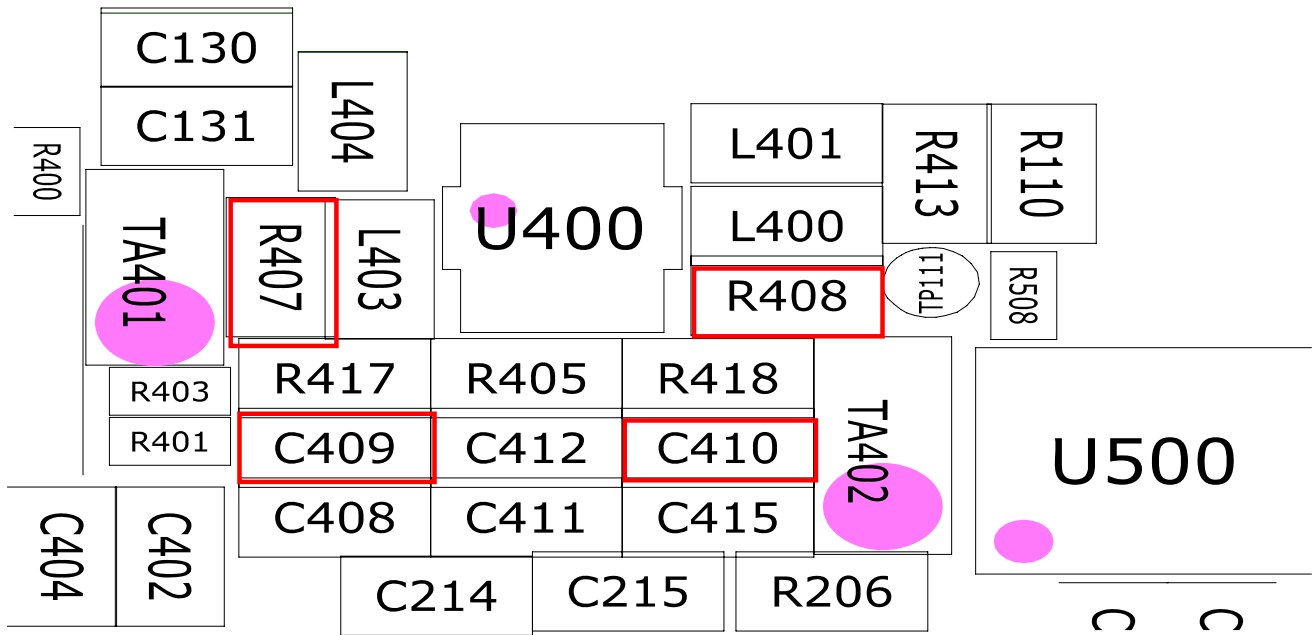


# Ear-Mic Path



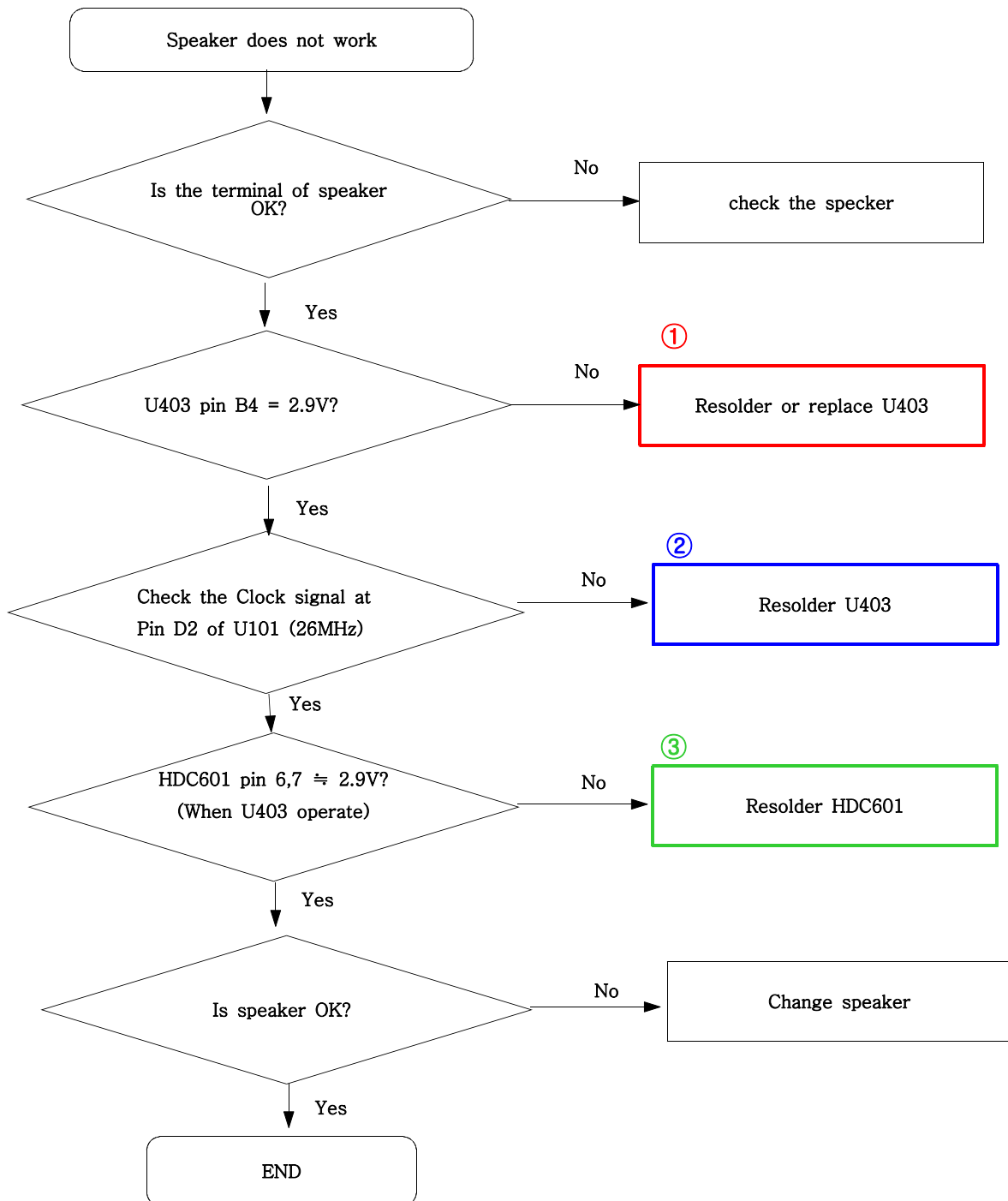
# Main-Mic Path

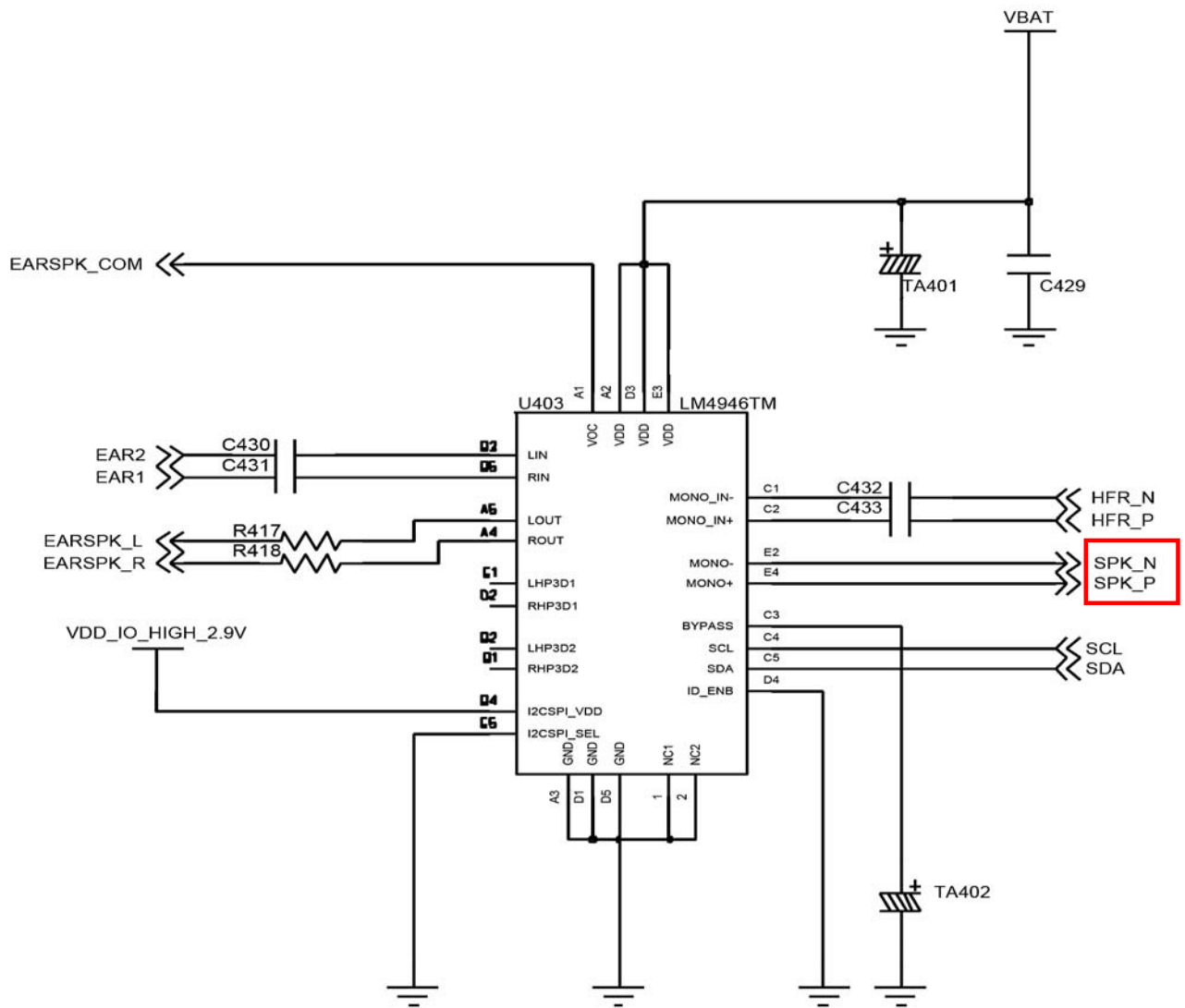


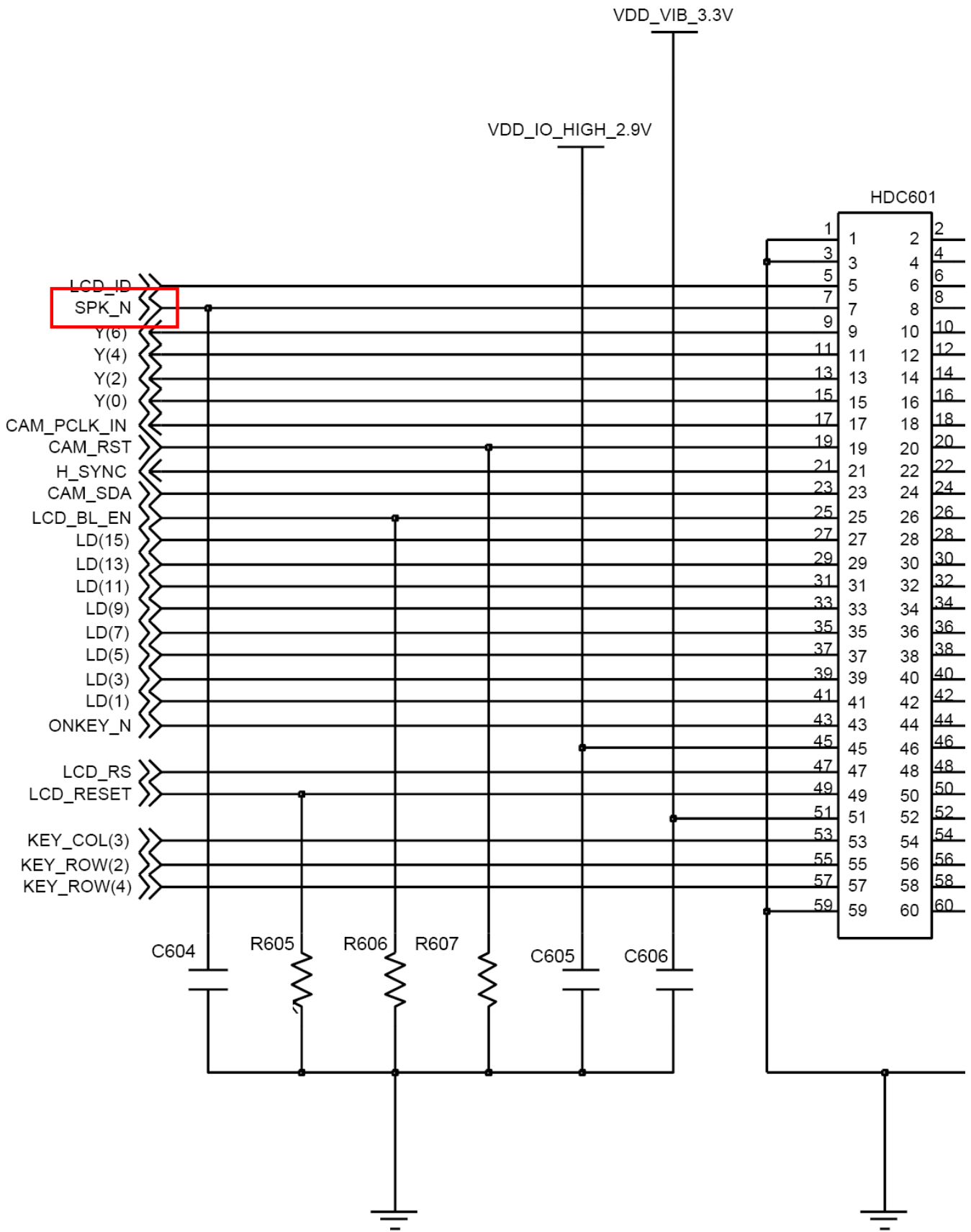




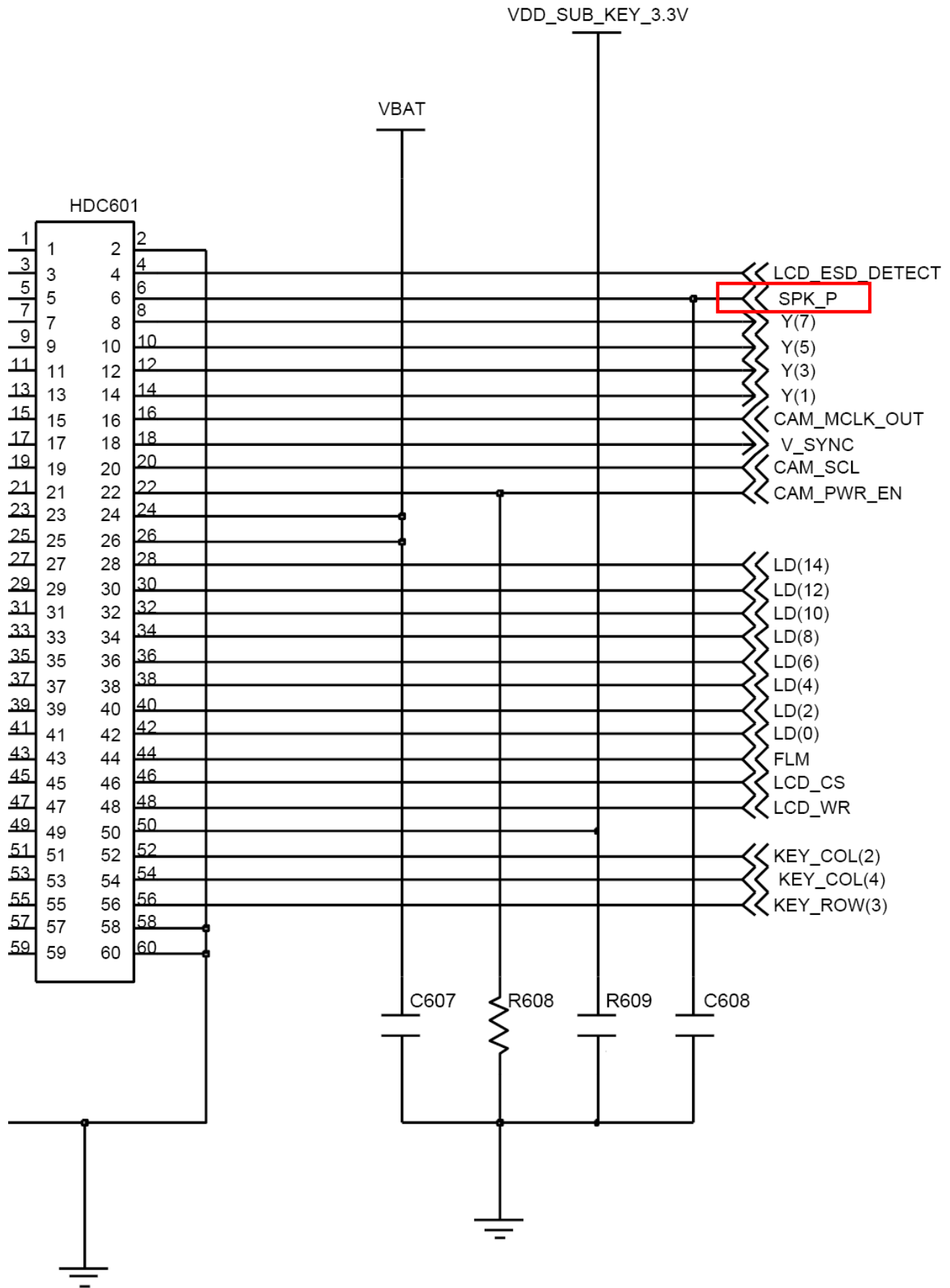
9-6. Speaker Part(Melody)



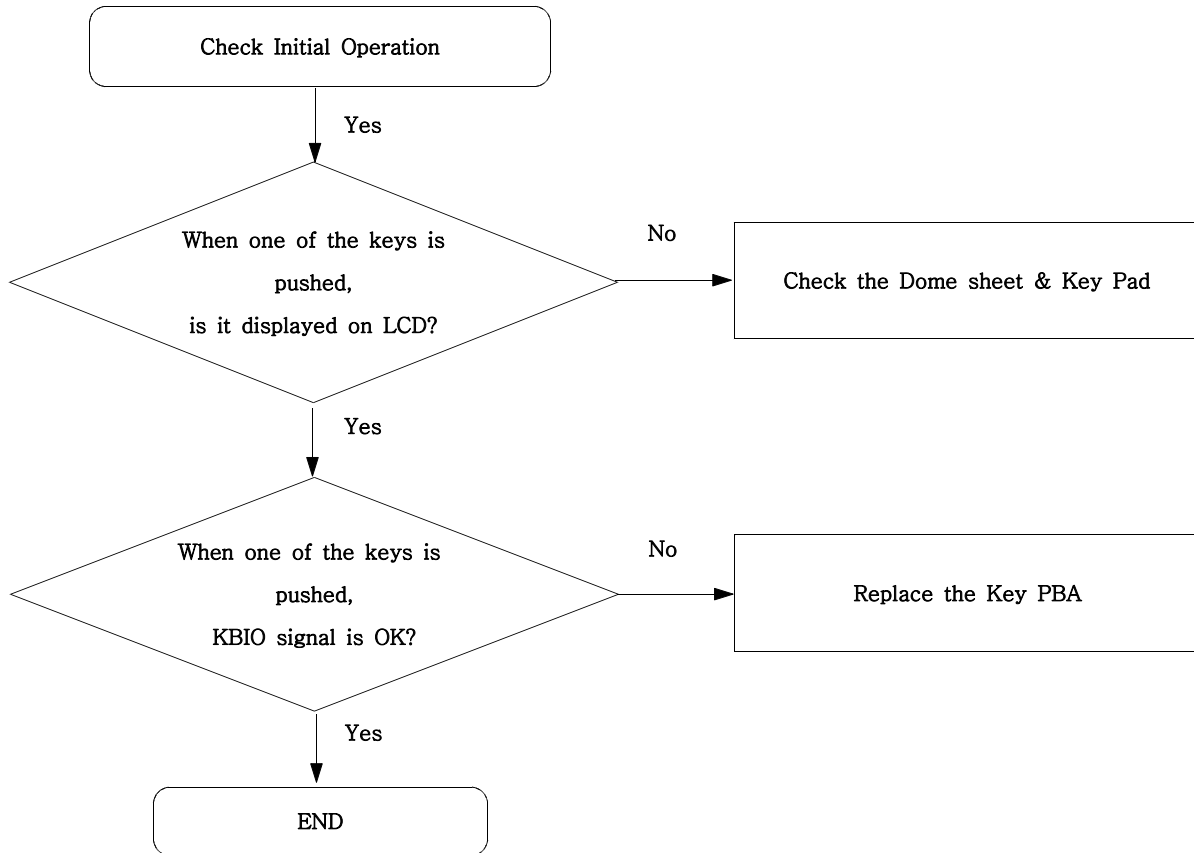




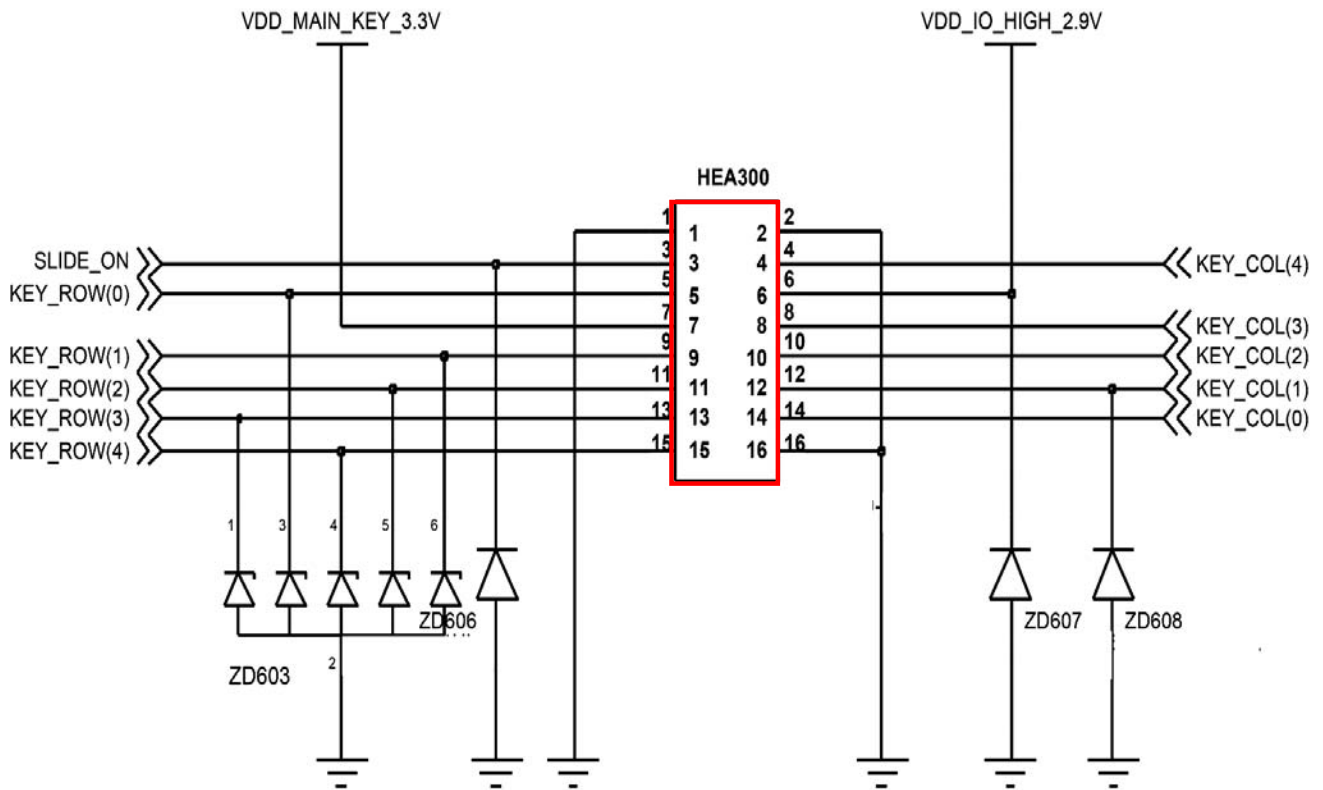
# Flow Chart of Troubleshooting



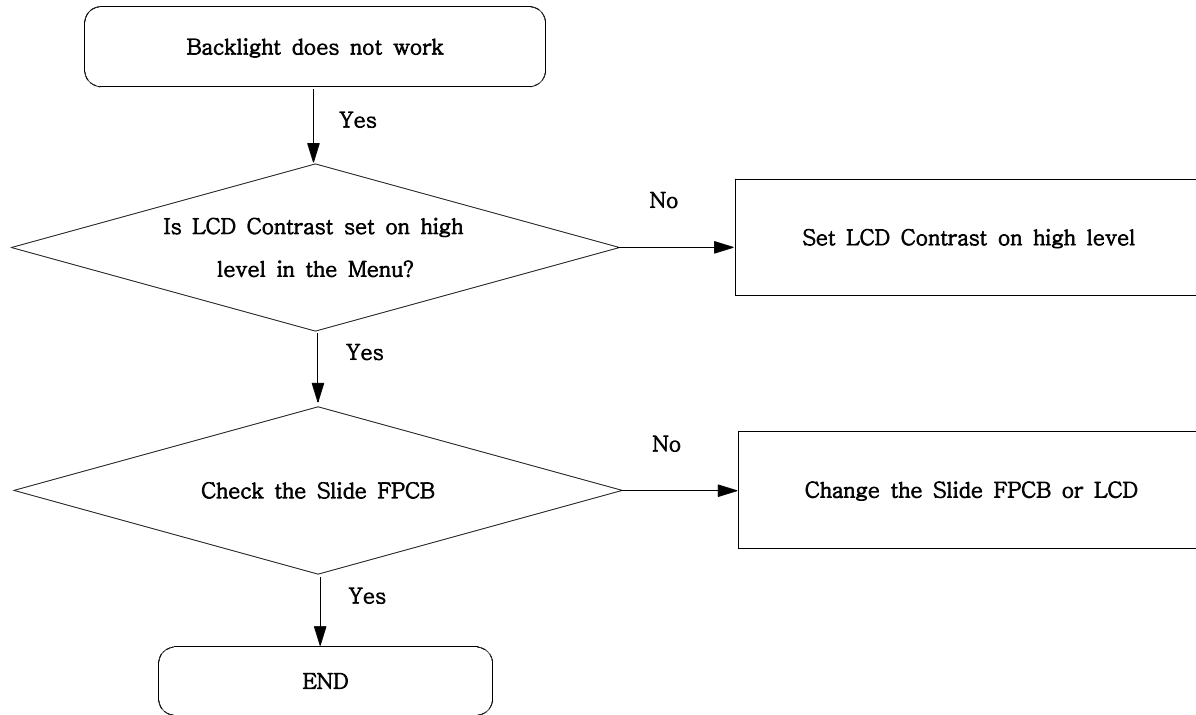
9-7. Key Data Input



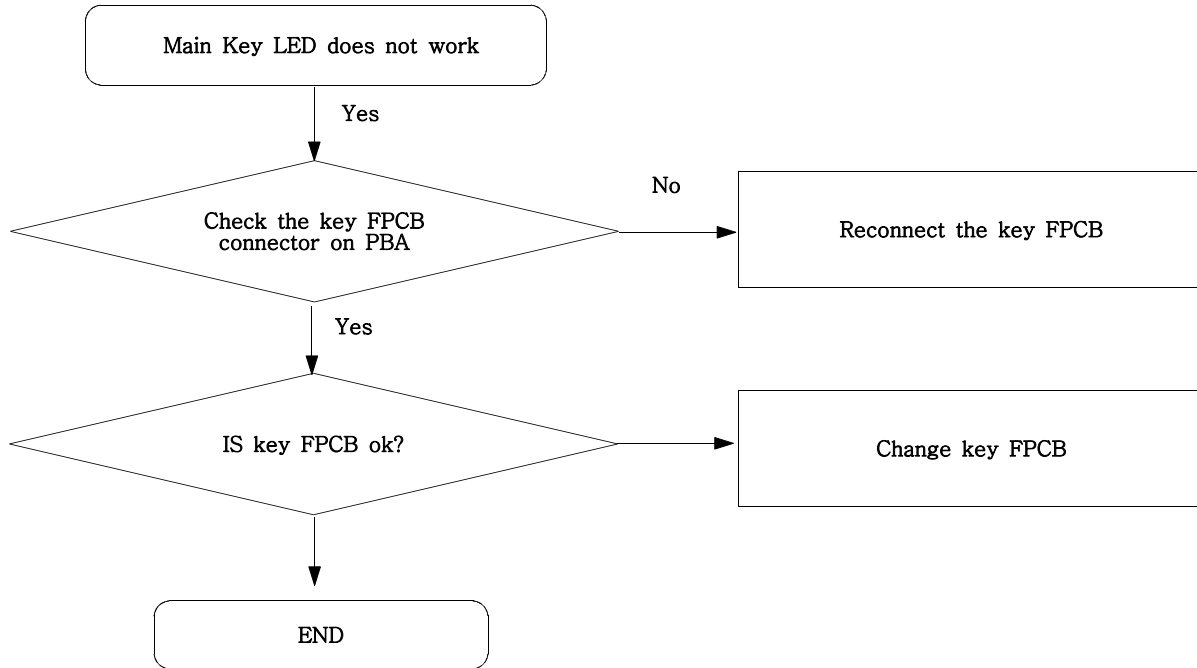
Flow Chart of Troubleshooting



9-8. Back Light (for Color Main LCD)

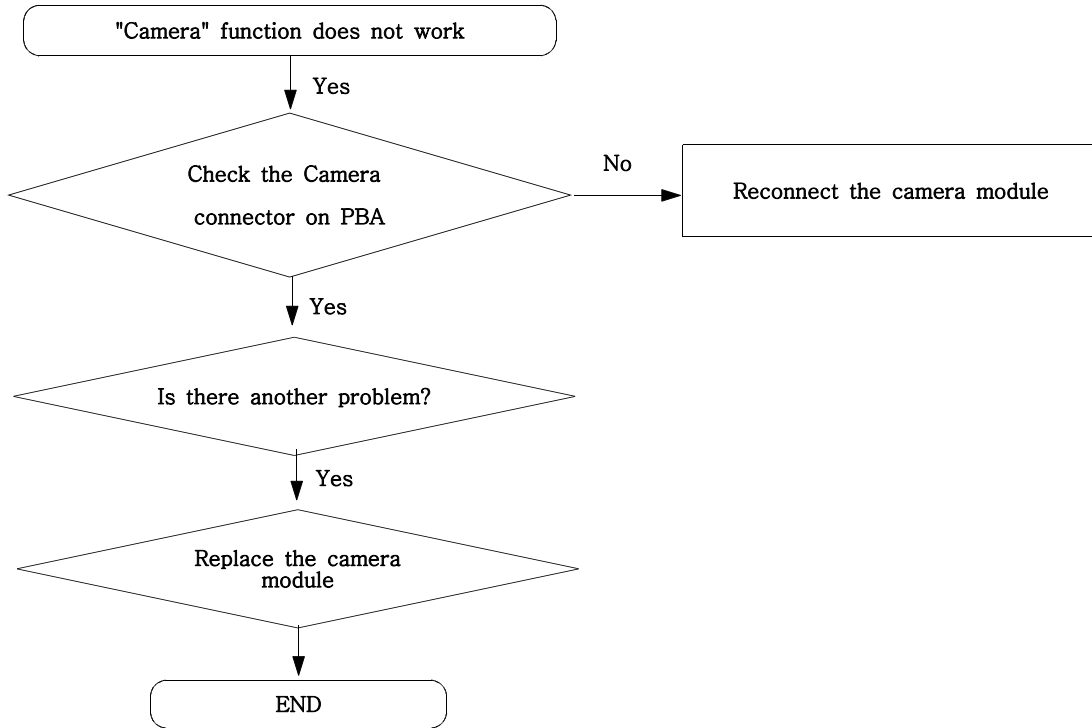


### 9-9. Key Back Light

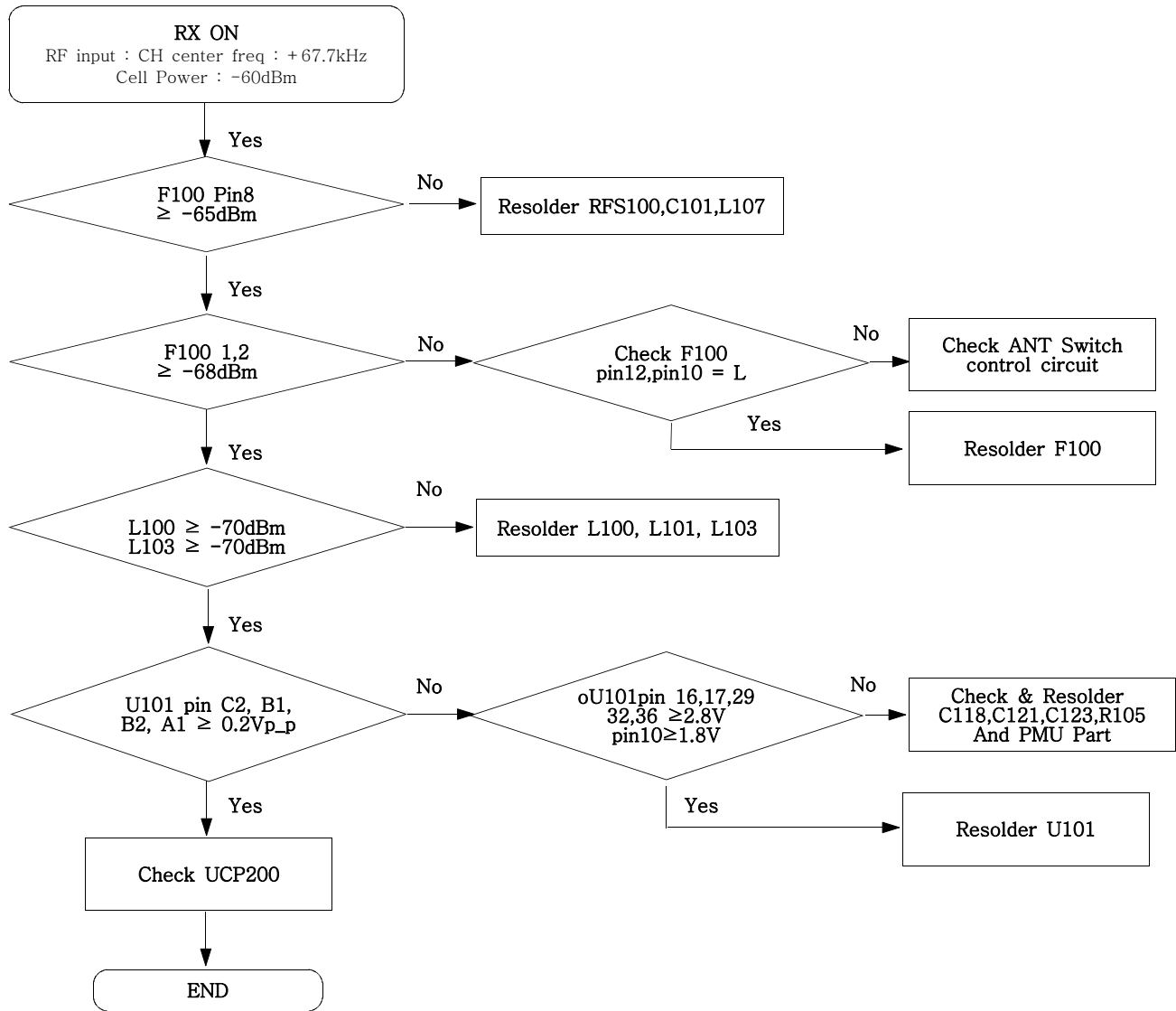




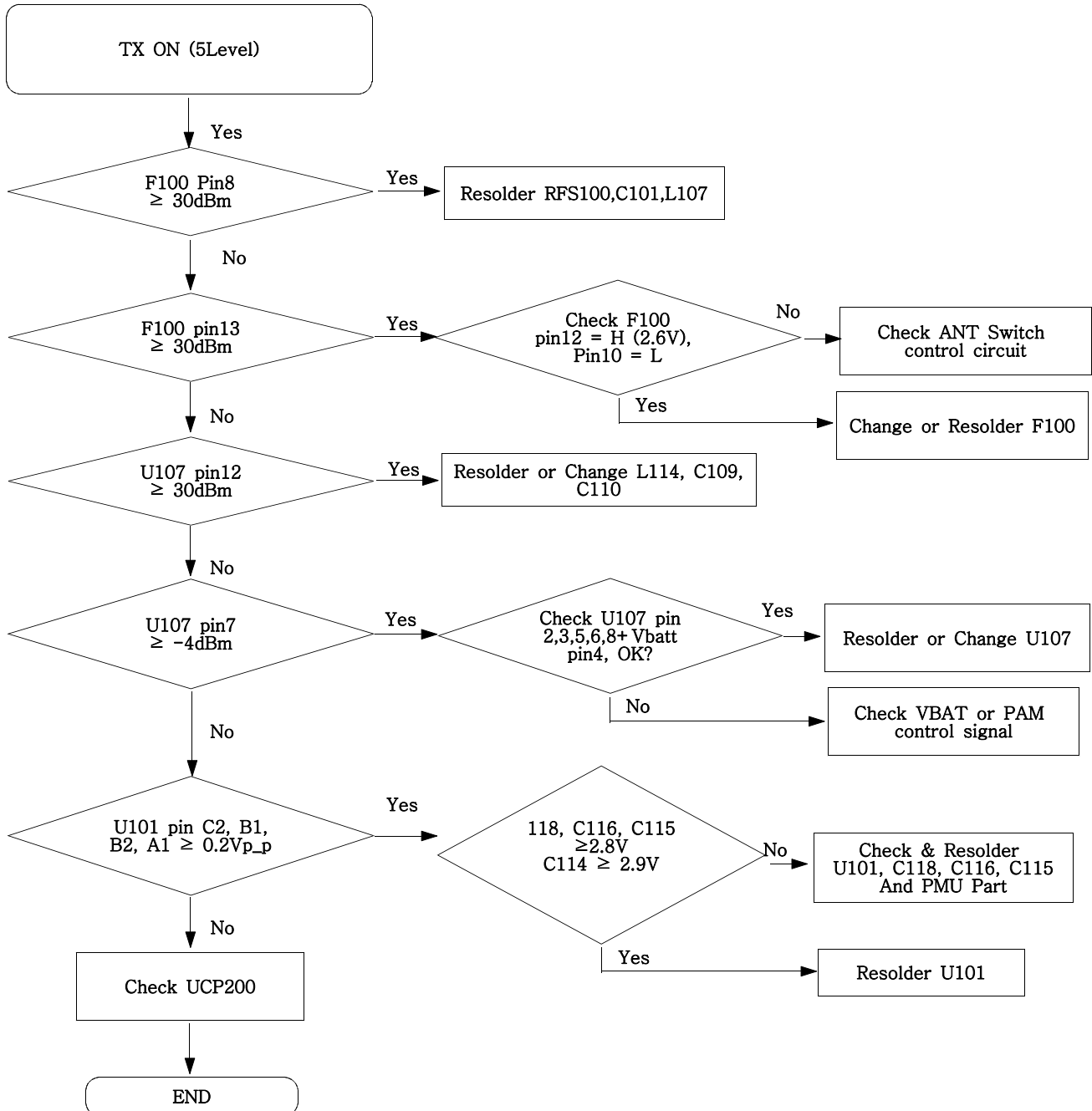
9-10. Camera part



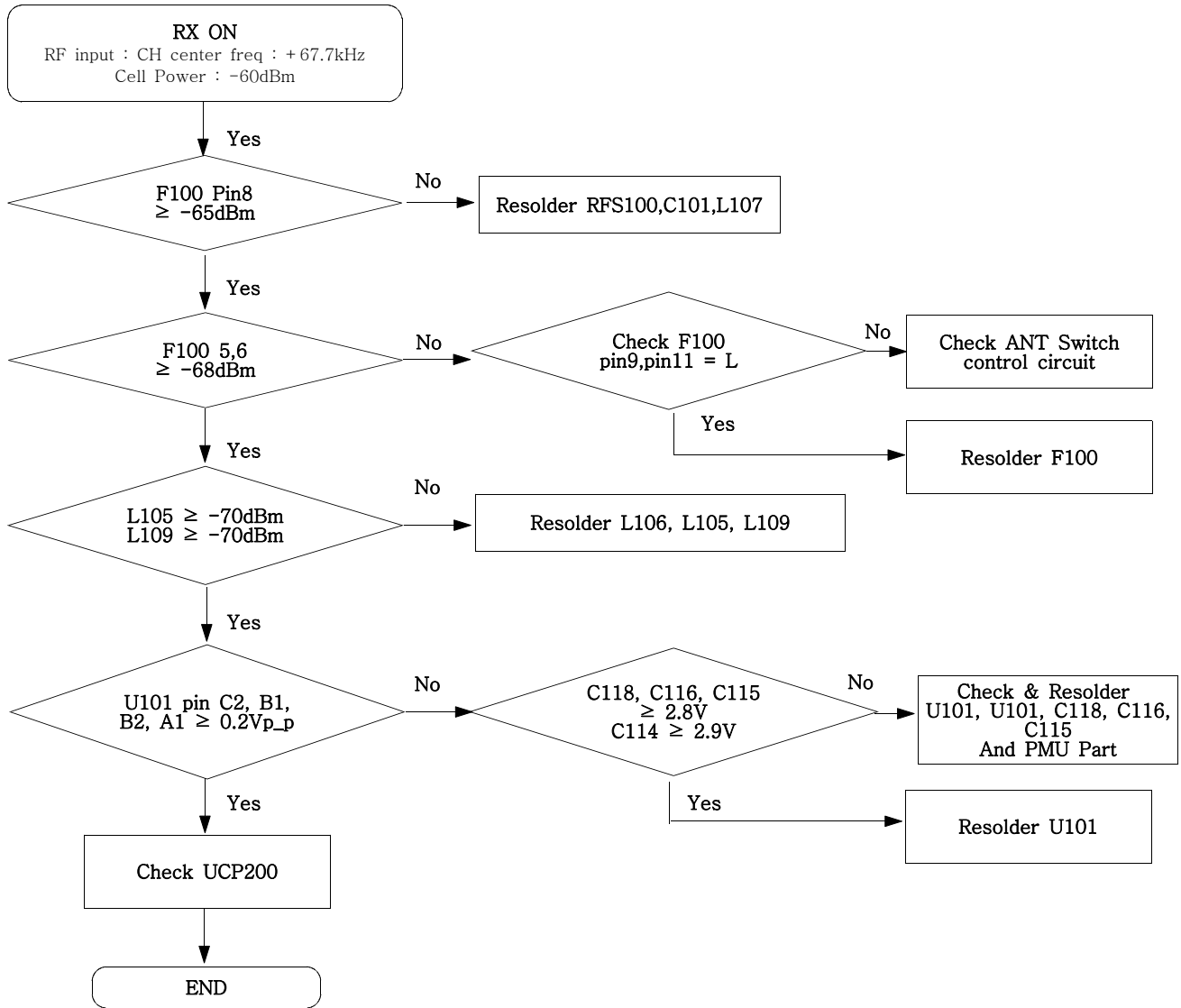
### 9-11. GSM Receiver



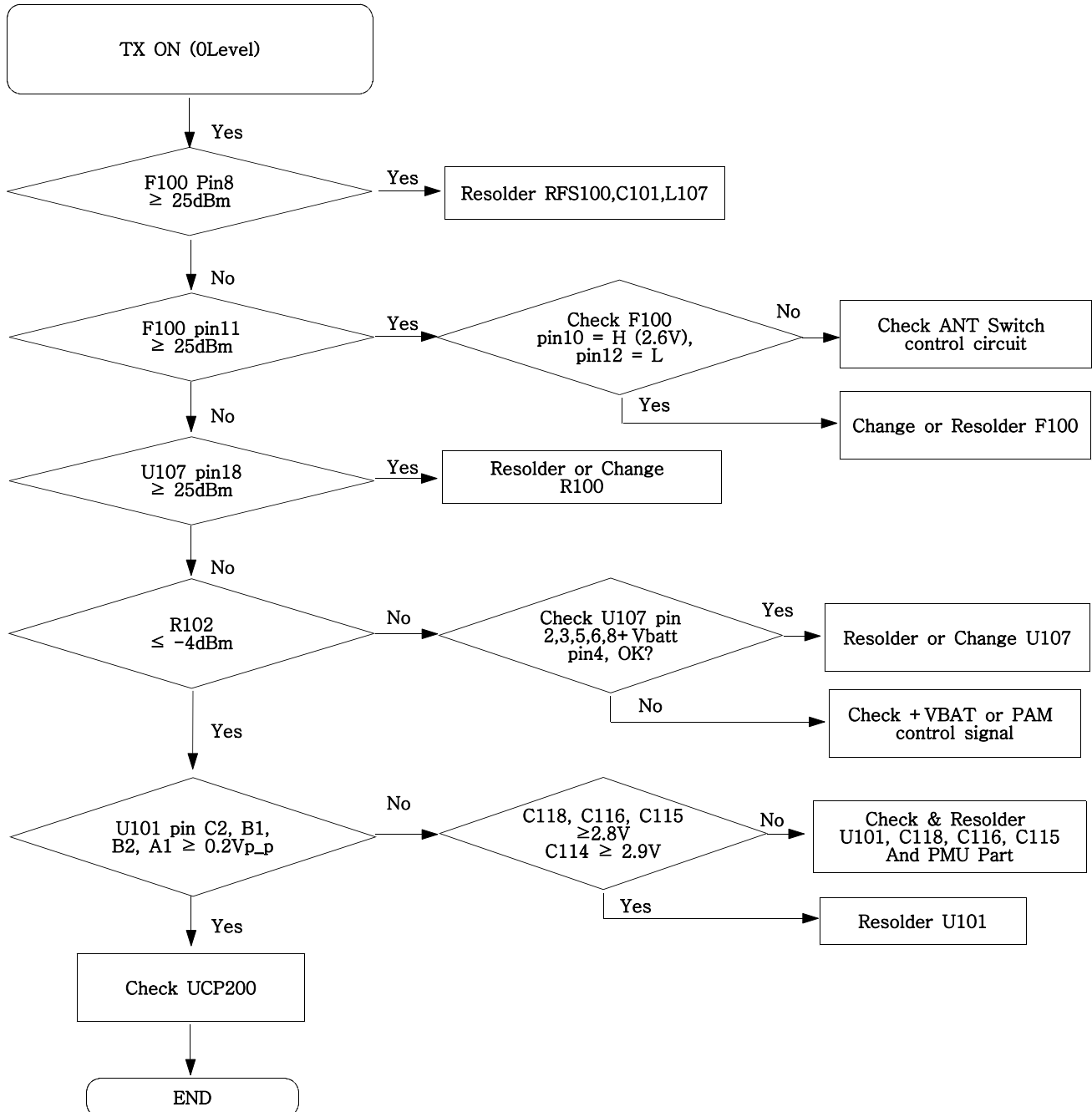
### 9-12. GSM Transmitter



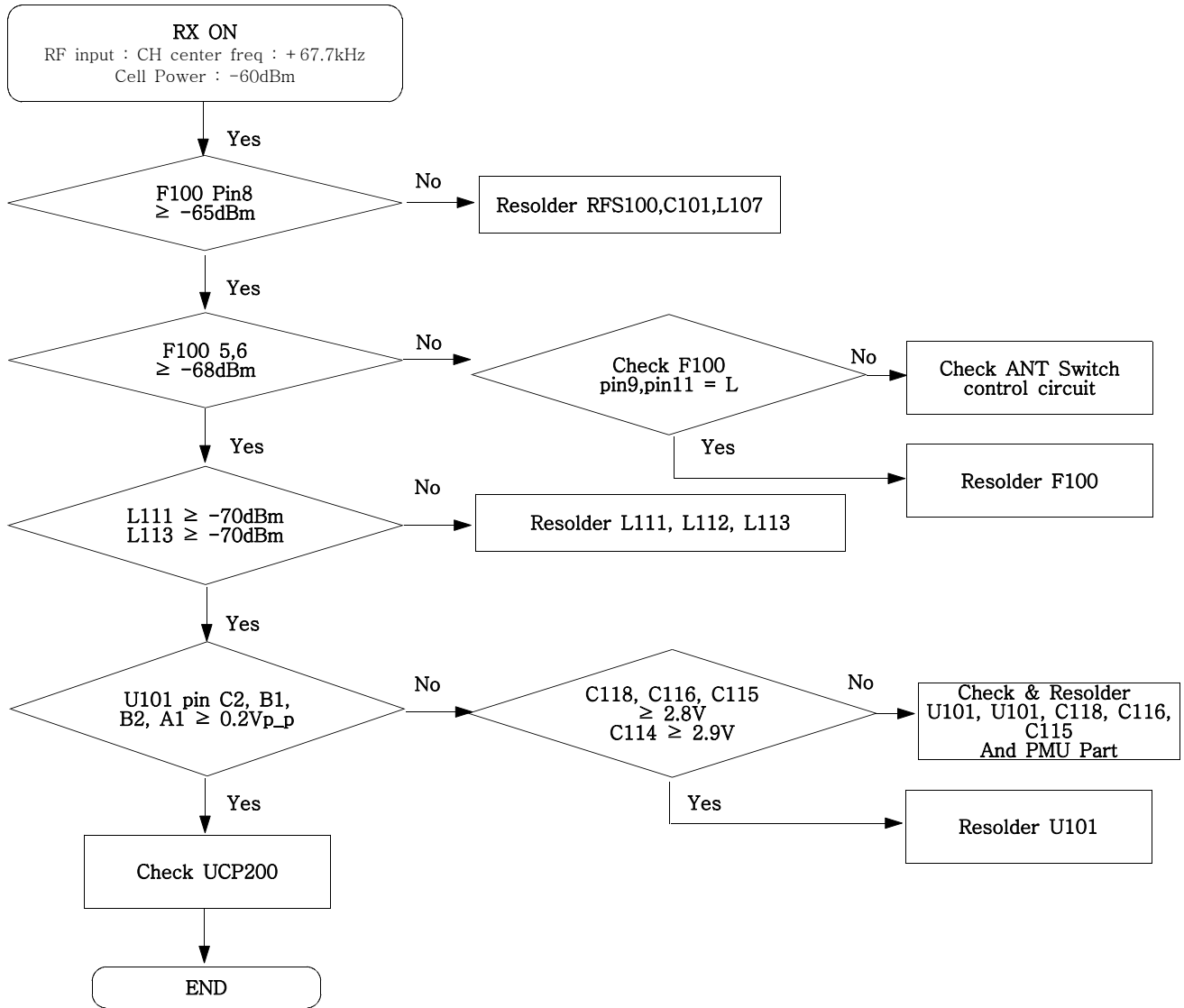
### 9-13. DCS Receiver



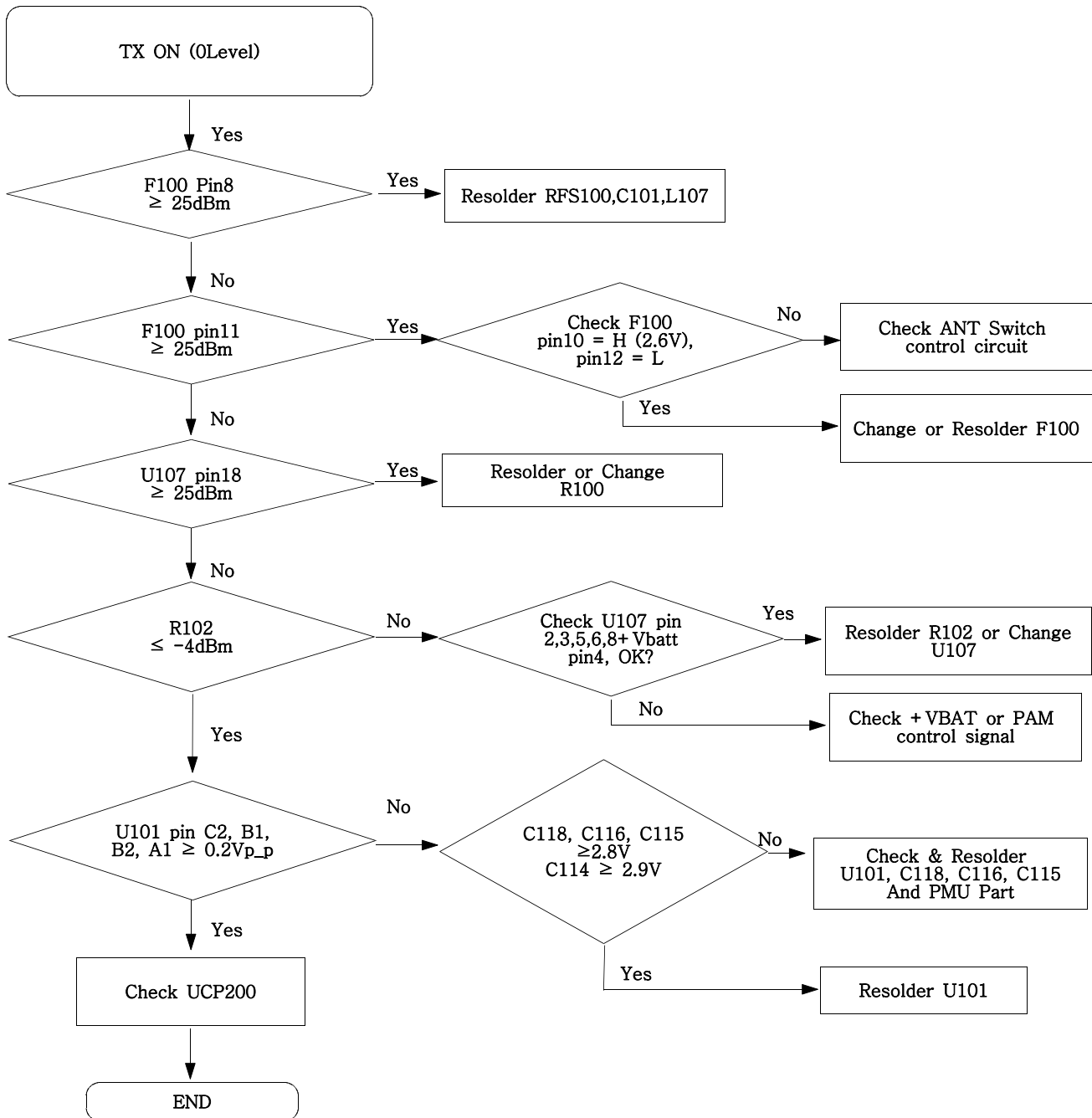
### 9-14. DCS Transmitter



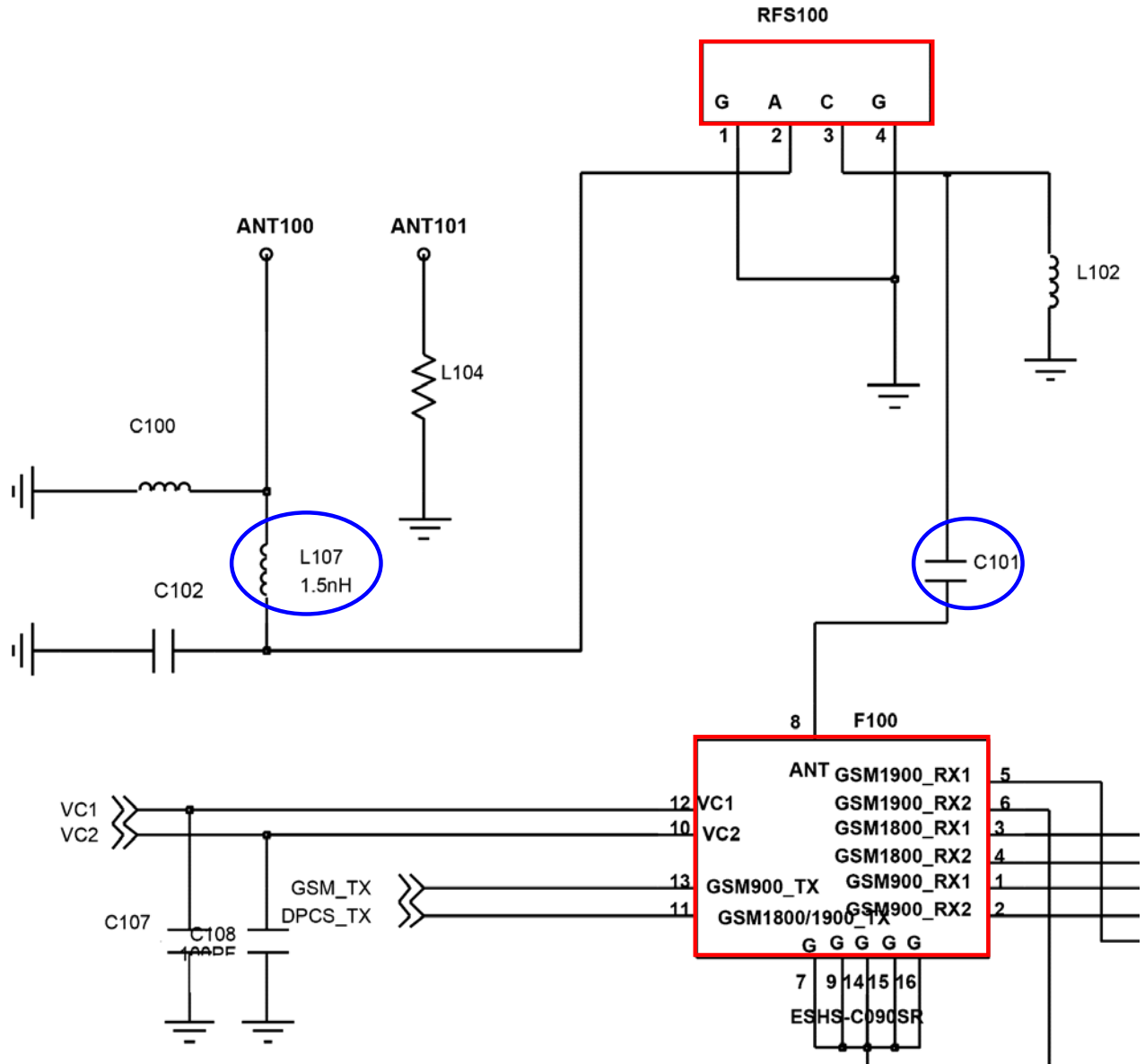
### 9-15. PCS Receiver



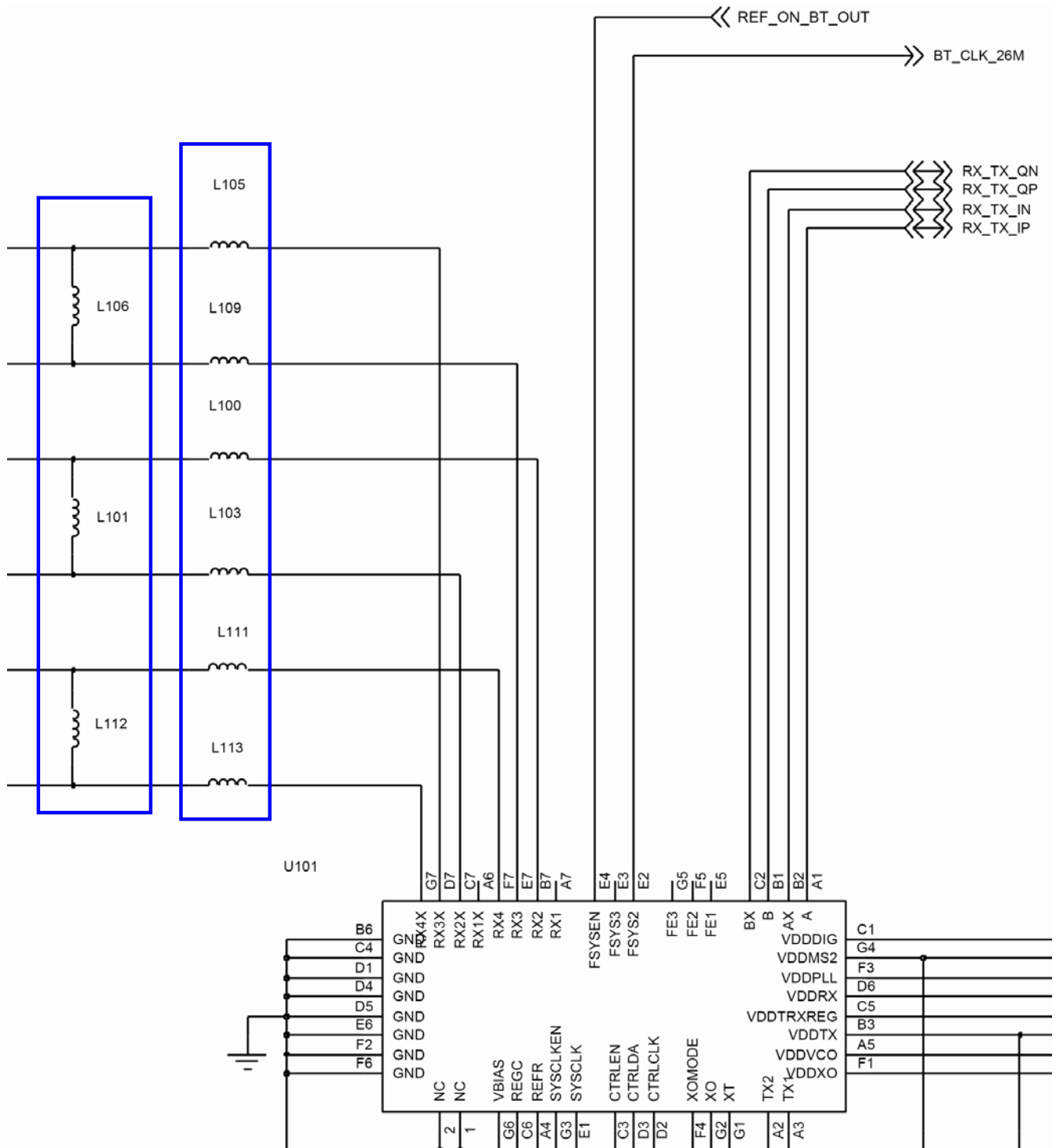
9-16. PCS Transmitter



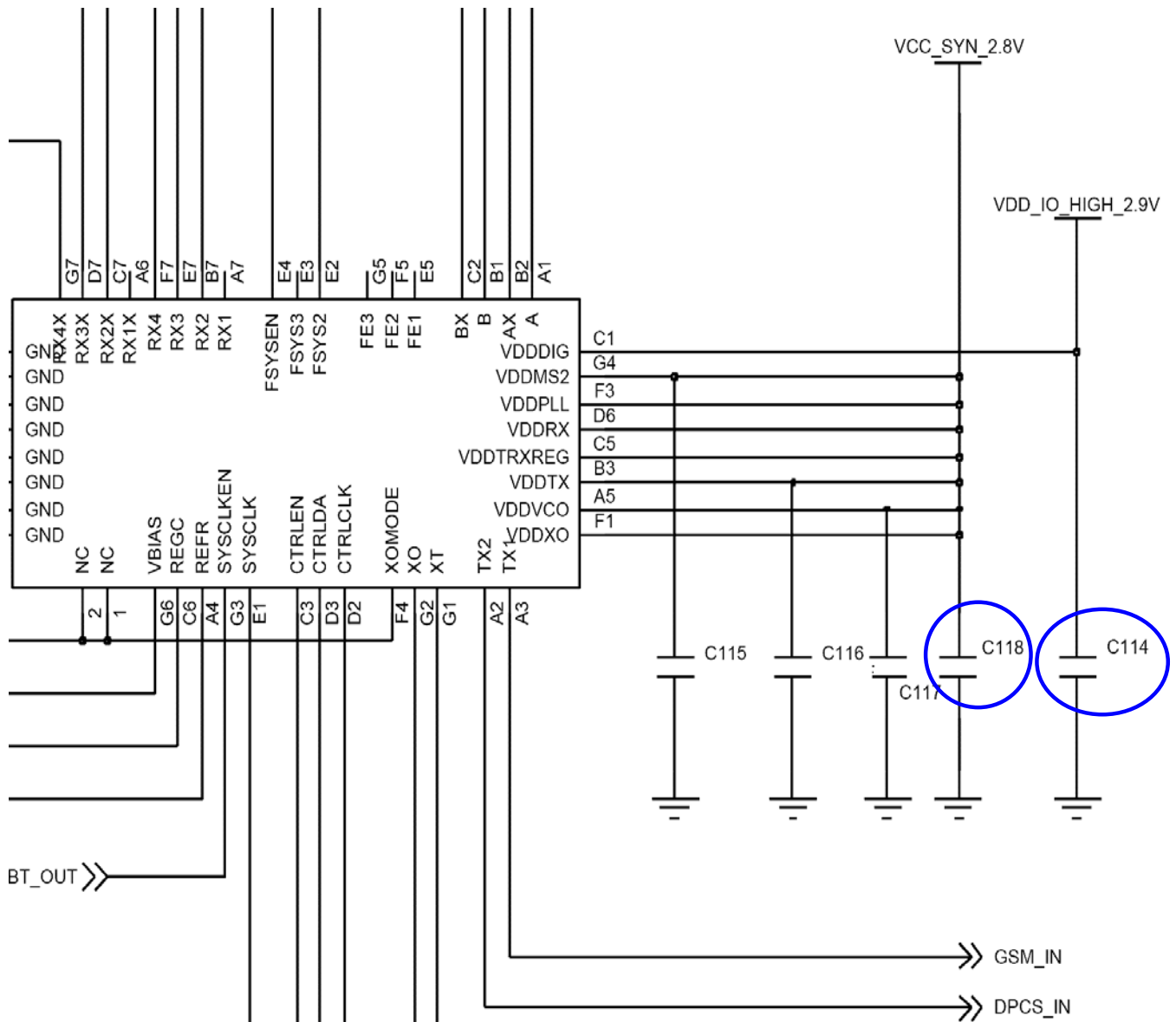
AUTHORIZED BY SAMSUNG.

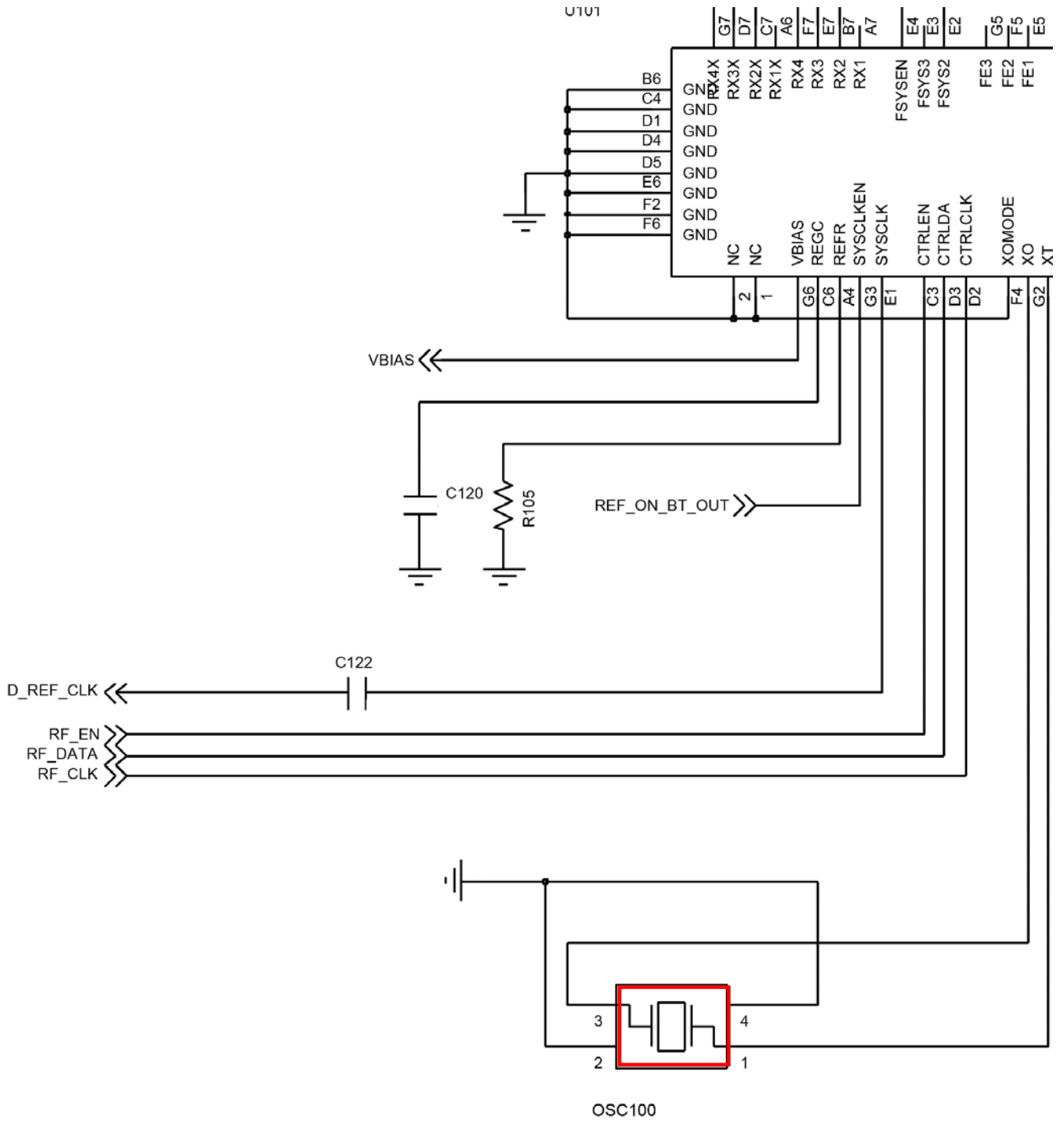




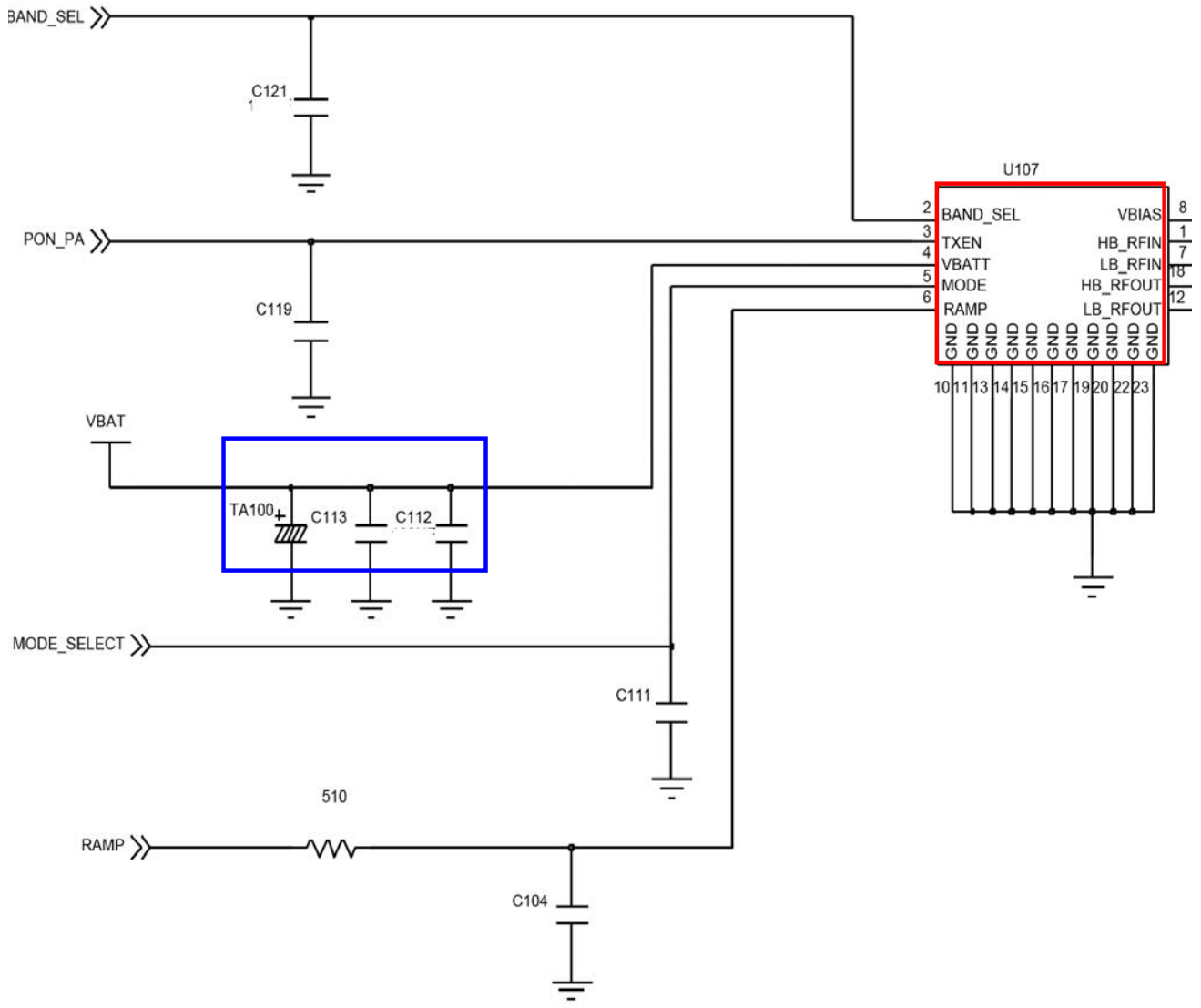


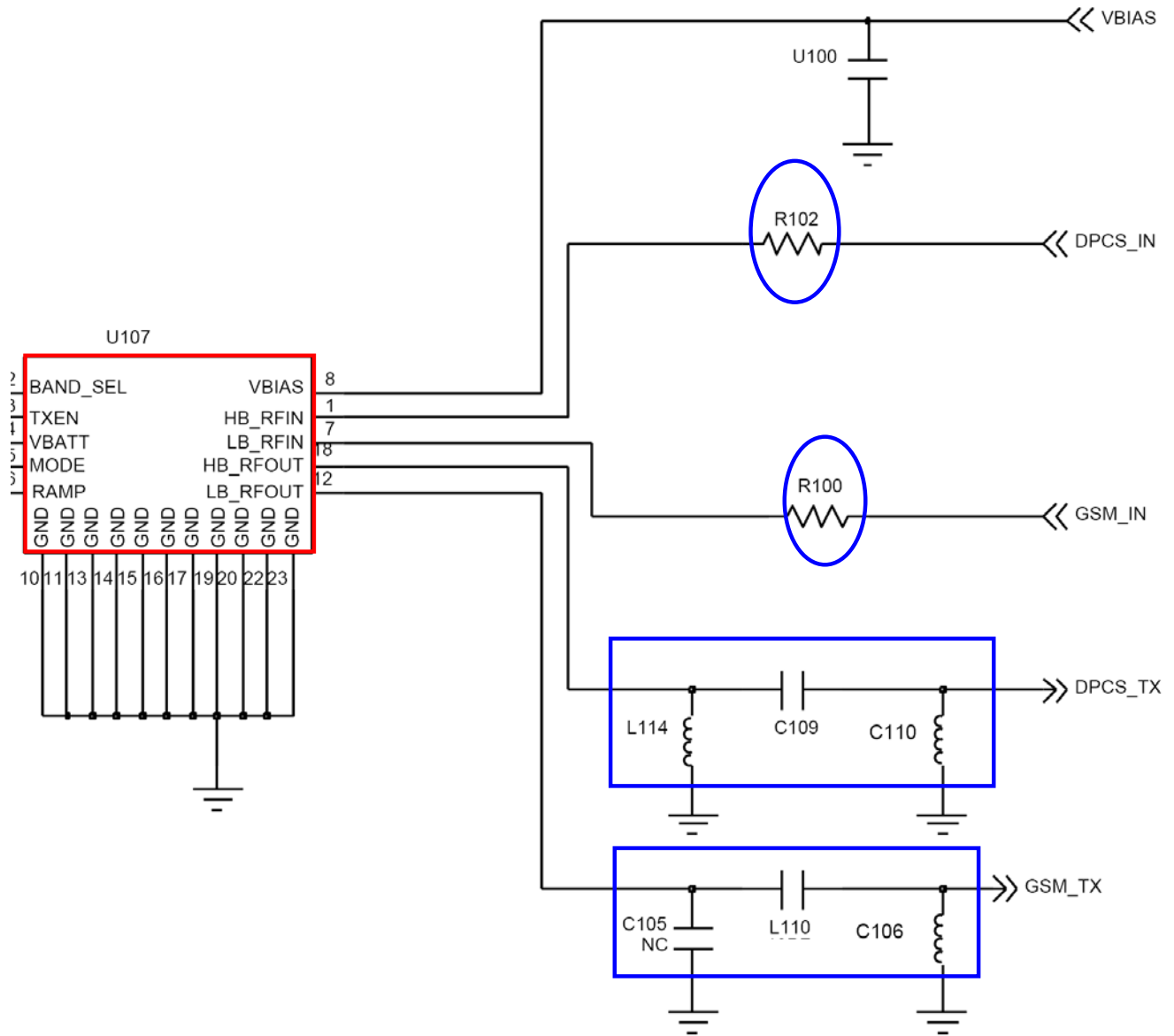
Flow Chart of Troubleshooting



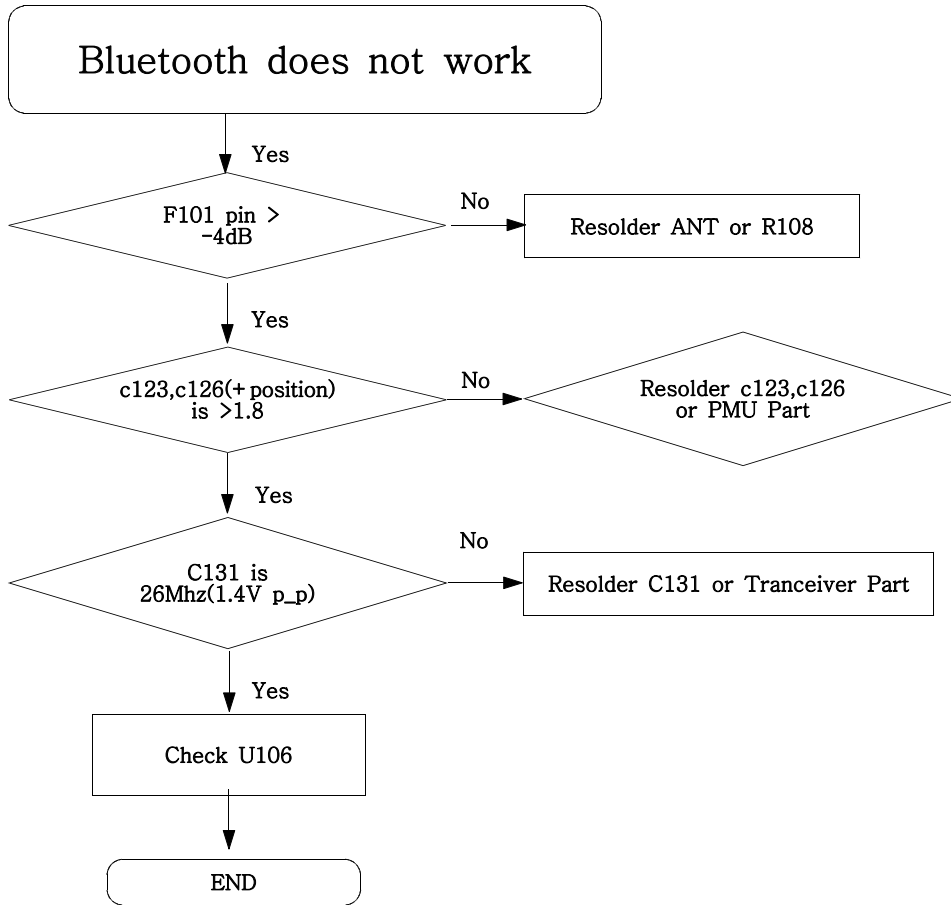


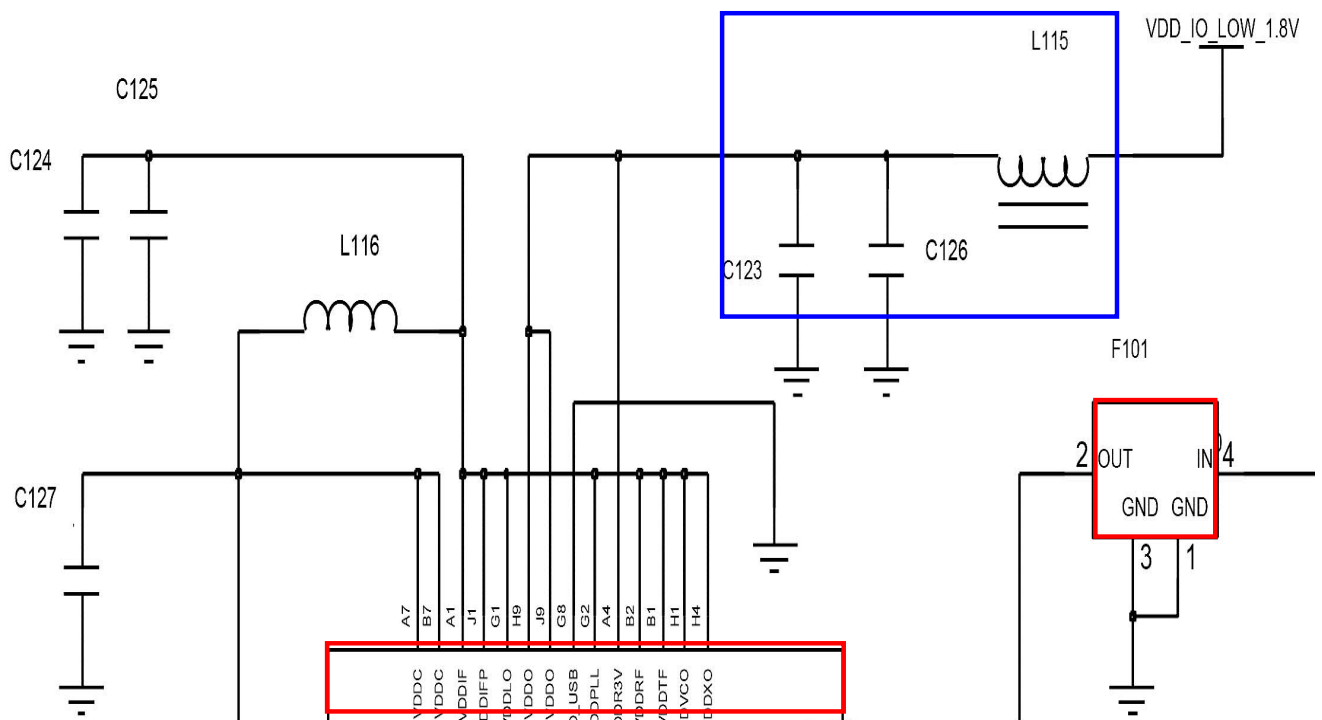
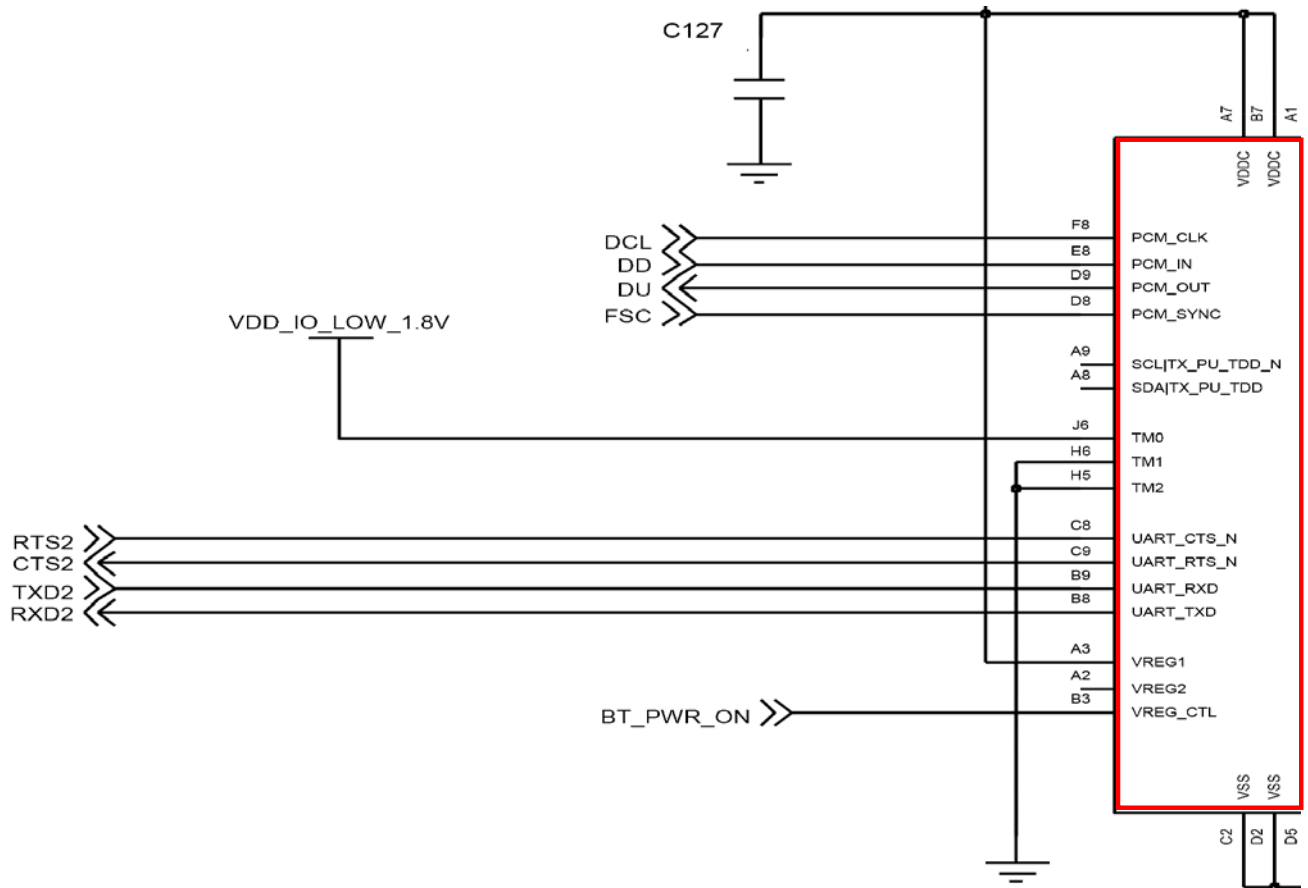
# Flow Chart of Troubleshooting



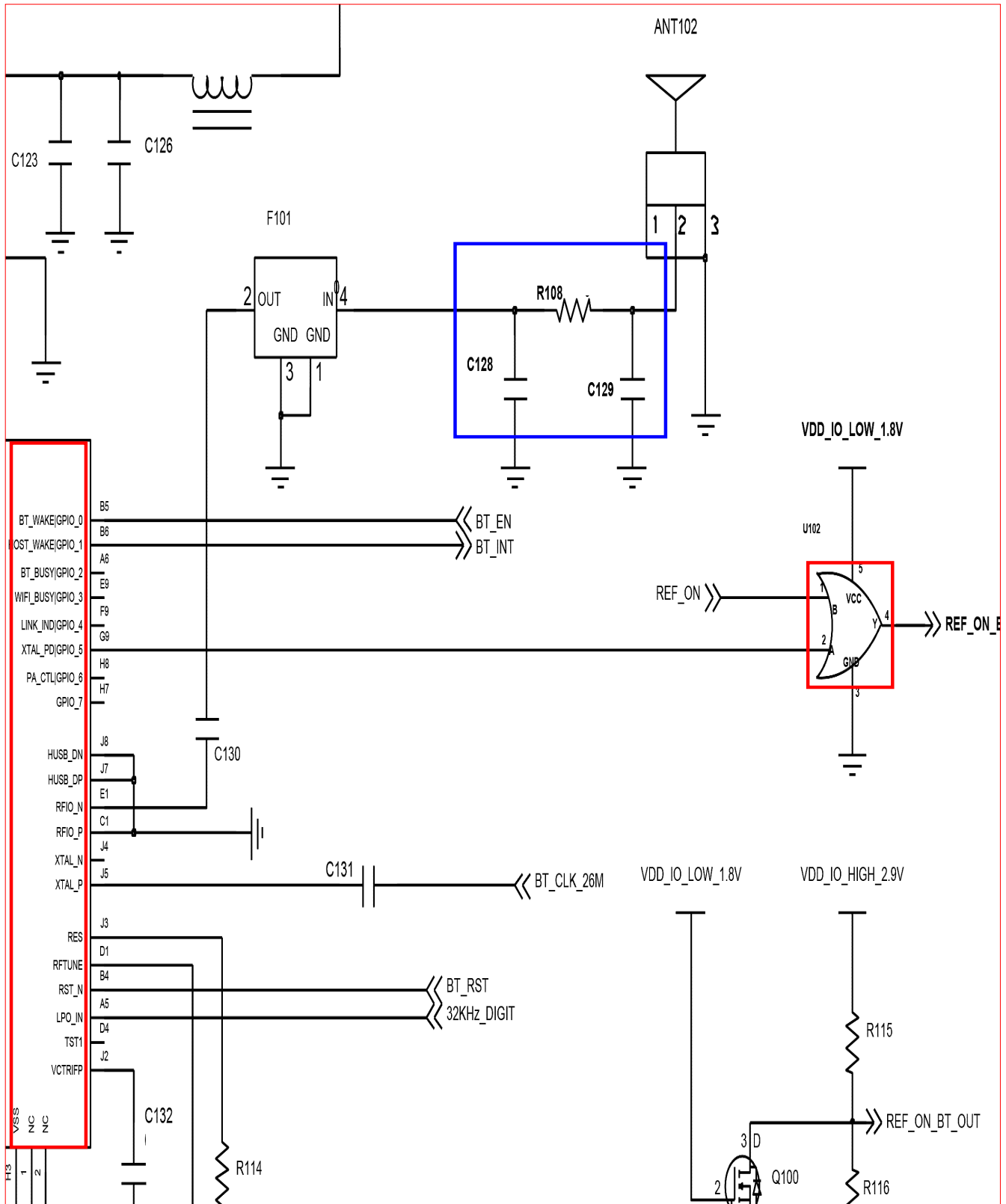


### 9-17. Bluetooth part

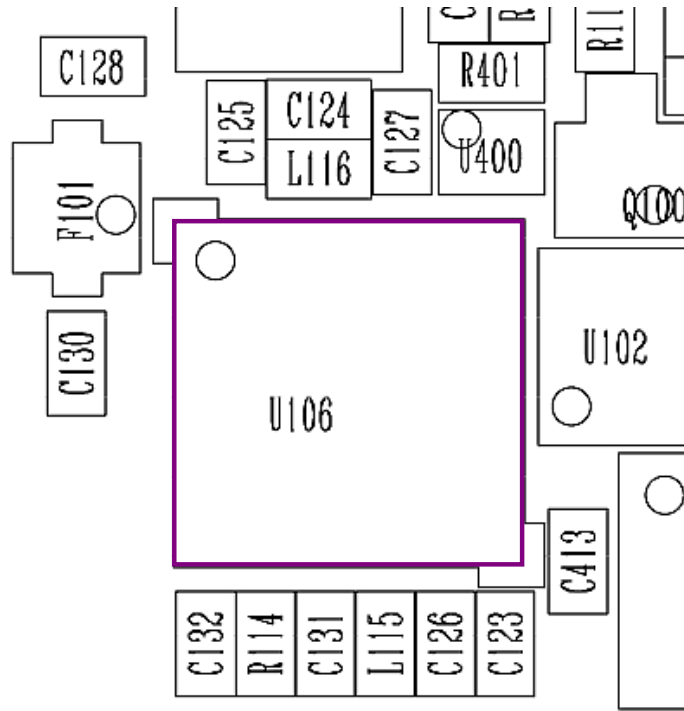




# Flow Chart of Troubleshooting







### 9-18. Radio part

